



Eagle Graphite specializes in natural flake graphite. Its 100%-owned Black Crystal graphite quarry is located 70 km north of the U.S. border.

### Company Highlights

- The only operational graphite flake production facility in western North America
- Closest graphite quarry to Reno, Nevada
- Production ready with established infrastructure
- Permitted quarry with approved 5Y mine plan
- Simple, proven processing with graphite easily liberated
- High carbon flake ranging from 94 – 99% purity
- Current offtake agreement for 3,000 tpa until 2023
- Light environmental footprint with no acidic tailings
- Historical production rate equivalent to 4,000 tpa of graphite
- Signed agreements for \$30m project financing (subject to close)
- Permits expandable to many times current volumes without Environmental Assessment
- Existing North American demand of 50,000 tpa
- Significant additional demand for graphite as electric vehicles produced in North America are projected to consume up to 93,000 tpa by 2020



### Capital Structure

**Trading Range Since RTO:**

*\$0.015 - \$0.10*

**Shares Outstanding:**

*278 million*

**Market Capitalization:**

*\$7 million (@ \$0.025/share)*

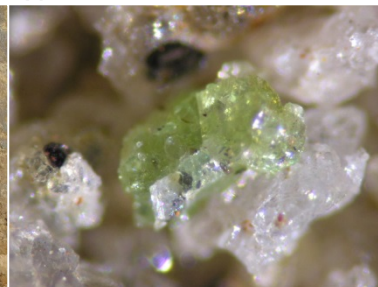
### Potential Opportunities

- Leases are valid until 2032 with an option to extend for an additional 30 years
- Resource is defined for only a portion of 100ha quarry lease
- Total mineral tenures package of over 2100 ha includes numerous additional exploration targets.
- 2017 objectives include expansion of current resource and further testing for Li-ion batteries and other advanced products
- By-product revenue from fine and medium-grained sands and aggregates, which are sold to nearby golf courses
- Quarry permit in place, and can be expanded substantially without Environmental Assessment

### Resource Estimate (November 2014)

Rock Type	Classification	Tonnage (in t)	Grade
Regolith	Measured	292,000	1.95%
	Indicated	356,000	1.71%
	Inferred	516,000	1.69%
Calc-silicate	Indicated	4,763,000	1.21%
	Inferred	4,591,000	1.24%
Total	Measured + Indicated	5,411,000	1.28%
	Inferred	5,107,000	1.29%

Please see Eagle Graphite's technical report titled "Technical Report on the Black Crystal Graphite Property – Slocan Mining Division, British Columbia, Canada", prepared by T.H. Carpenter and A. Koffyberg, and dated November 24, 2014, for the complete parameters and assumptions used in calculating the mineral resource estimates and for other information concerning the Black Crystal Graphite Property. Edward Nunn, P.Eng., is a "Qualified Person" as defined by National Instrument 43-101, has approved the scientific and technical information in this fact sheet.



### Management

**Jamie Deith:** *President and Director*

**Torey Marshall:** *EVP, Business Development*

**Rory Miller:** *Operations Superintendent*

**Victor Learmonth:** *Superintendent*

### Board of Directors

**Jamie Deith**

**Steve Brunelle**

**Brian Bapt**

**Robert Matter**

### Contact Information

#### Telephone:

1-877-472-3483

#### Email:

[ir@eaglegraphite.com](mailto:ir@eaglegraphite.com)

#### Mailing Address:

6420 Eagles Drive  
Courtenay,  
V9J 1V4