

CriticalElements

Lithium Corporation



Lithium Charged



Forward-Looking Information: This presentation contains "forward-looking information" within the meaning of Canadian securities legislation. All information contained herein that is not clearly historical in nature may constitute forward-looking information. Forward-looking information includes, without limitation, statements regarding the results of the Feasibility Study including statements about the projected IRR, NPV, payback period and future capital and operating costs, the availability and access to hydroelectric power, projected annual rate of lithium and tantalum production, the estimation of mineral resources, the market and future price of lithium and tantalum, permitting and the ability to finance the project. Generally, such forward-looking information can be identified by the use of forward-looking terminology such as "plans", "expects" or "does not expect", "is expected", "budget", "scheduled", "estimates", "forecasts", "intends", "anticipates" or "does not anticipate", or "believes", or variations of such words and phrases or state that certain actions, events or results "may", "could", "would", "might" or "will be taken", "occur" or "be achieved". Forward-looking information is based on certain factors and assumptions management believes to be reasonable at the time such statements are made, including but not limited to, continued exploration activities, lithium, tantalum and other commodity prices, the estimation of initial and sustaining capital requirements, the estimation of labour and operating costs, the estimation of mineral resources, the assumption with respect to currency fluctuations, the timing and amount of future exploration and development expenditures, receipt of required regulatory approvals, the availability of necessary financing for the project, the completion of the environment assessment process, permitting and such other assumptions and factors as set out herein. Forward-looking information is subject to known and unknown risks, uncertainties and other factors that may cause the actual results, level of activity, performance or achievements of the Company to be materially different from those expressed or implied by such forward-looking information, including but not limited to: volatile stock price; risks related to changes in lithium and tantalum prices; sources and cost of power facilities; the estimation of initial and sustaining capital requirements; the estimation of labour and operating costs; the general global markets and economic conditions; the risk associated with exploration, development and operations of mineral deposits; the estimation of mineral resources; the risks associated with uninsurable risks arising during the course of exploration, development and production; risks associated with currency fluctuations; environmental risks; competition faced in securing experienced personnel; access to adequate infrastructure to support mining, processing, development and exploration activities; the risks associated with changes in the mining regulatory regime governing the Company; completion of the environmental assessment process; risks related to regulatory and permitting delays; risks related to potential conflicts of interest; the reliance on key personnel; financing, capitalization and liquidity risks including the risk that the financing necessary to fund continued exploration and development activities at the Rose Lithium-Tantalum Project may not be available on satisfactory terms, or at all; the risk of potential dilution through the issue of common shares; the risk of litigation. Although the Company has attempted to identify important factors that could cause actual results to differ materially from those contained in the forward-looking information, there may be other factors that cause results not to be as anticipated, estimated or intended. There can be no assurance that such forward-looking information will prove to be accurate, as actual results and future events could differ materially from those anticipated in such forward-looking information. Accordingly, readers should not place undue reliance on forward-looking information. Forward-looking information is made as of the date of this presentation, and the Company does not undertake to update such forward-looking information except in accordance with applicable securities laws.

Currency Presentation: Unless indicated otherwise, all dollar figures are in Canadian dollars.

Cautionary Statements Regarding Mineral Resource Estimates: Mineral resources, which are not mineral reserves, do not have demonstrated economic viability. Environmental, permitting, legal, title, taxation, sociopolitical, marketing, or other relevant issues may materially affect the estimate of Mineral Resources. In addition, there can be no assurance that Mineral Resources in a lower category may be converted to a higher category, or that Mineral Resources may be converted to Mineral Reserves.

Quality Control and Assurance: The scientific and technical content of this presentation was reviewed and approved by the Company's CEO and shareholder, Jean-Sébastien Lavallée, P.Geo., who is a Qualified Person within the meaning of National Instrument 43-101.

Sources of Information: Information and data such as market prices, volumes and information on comparable development companies' projects were obtained from public sources such as press releases, technical reports and different industry publications.

Trading Symbol: TSX-V: CRE

Frankfurt: F12

OTCQX: CRECF

Shares Outstanding: 158.8 million

Warrants:

0.4 million at \$1.00 (May 2020)

3.5 million at \$1.25 (May 2020)

Options: 7.8 million (\$0.18 - \$1.25)

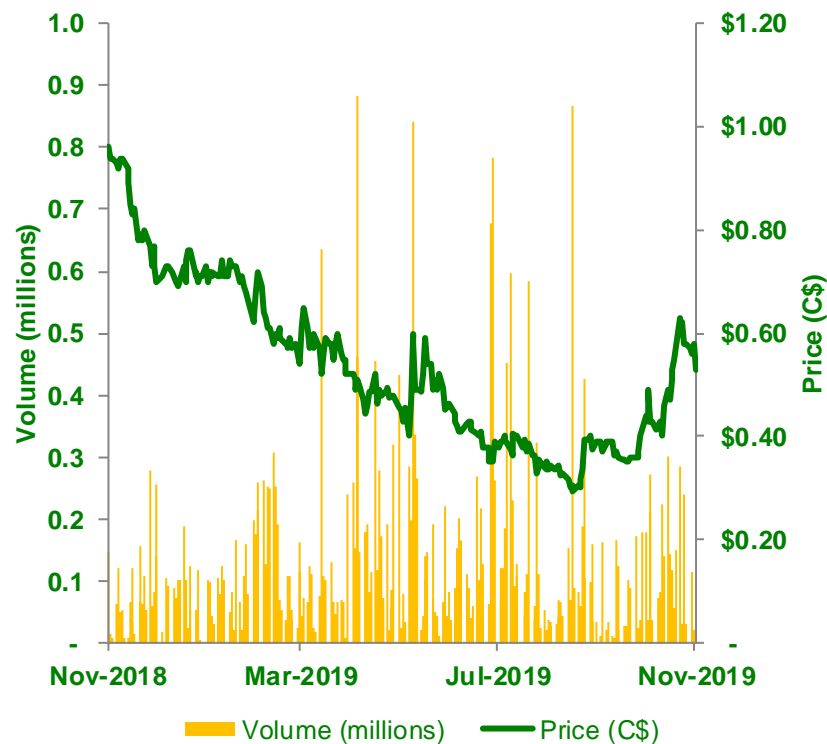
Fully Diluted: 170.6 million

Basic Market Cap: C\$84.2 million

Ownership:

Management & Directors: 8.7%

J.P. Morgan Asset Management UK: 7.9%



Research Coverage:

cg/Canaccord
Genuity

GMP

Securities
Griffiths McBurney

PARADIGM
CAPITAL



Strong lithium management & operation knowledge with ex-Rockwood Lithium CEO, CFO and Chief Processing Manager

- Steffen Haber, President
- Marcus Brune, Director

Mining background management involved from discovery to operation

- Jean-Sébastien Lavallée, CEO
- Paul Bonneville, Project Manager
- Jacqueline Leroux, Environmental Manager

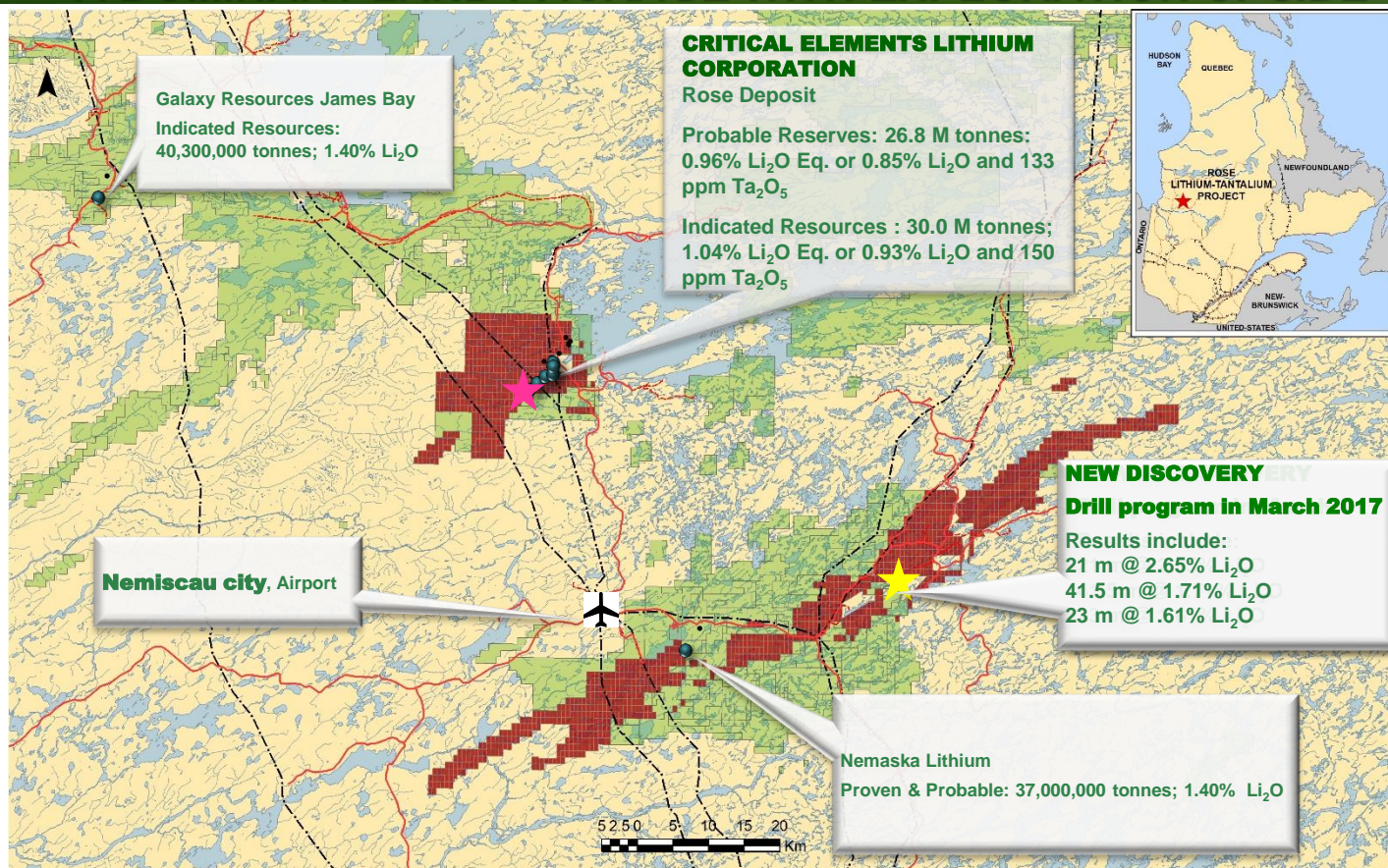
Capital markets team that created billions in value for shareholders

- Rockwood Holdings sold for \$6.2B
- Significant involvement in additional growth stories



A DOMINANT LAND PACKAGE WITH EXPLORATION UPSIDE

- Located in a premier mining jurisdiction in Québec
- Excellent access to infrastructure including roads, low cost power and skilled labor
 - Camp
 - Power line on site
 - Road access
 - Airport
- Strong relations with First Nations communities and local and provincial





Our Development Strategy is based on:

- Proven Management Team
- Low risk two-phase Approach
- Simple open pit mining and conventional processing operation
- Phase 1 captures 70% of the value
 - Phase 1 production of spodumene concentrate and tantalum
 - Phase 2 production of lithium carbonate

Deliverables:

- Spodumene Pilot Plant:
- Lithium Carbonate Pilot Plant:
- EIS Filing:
- Delivery of Feasibility Study:
- Phase 1 Project Financing:
- Phase 2 Lithium Carbonate/Hydroxyde Feasibility :
- Permitting H2 2019:
- Construction H2 2019:
- Commercial Production H1 2021:



**PHASE 1 FEASIBILITY RESULTS**

	Pre-Tax	After-Tax
NPV _{8%} IRR Payback Period	\$1.257 B 48.2% 2.3	\$726M 34.9% 2.8
Gross Margin Average Annual EBITDA Mine Life CAPEX	63% \$183M 17 Years \$341M	
Mill Throughput Strip Ratio Average Mill Feed Grade Commodity Prices (FOB Port La Baie) <ul style="list-style-type: none">• Technical Grade Spodumene 6.0%• Chemical Grade Spodumene 5.0%• Tantalum Concentrate 20.0% LCE Benchmark Price	4,900 t/day (1,600,000 t/y) 7.2:1 0.85% Li₂O 133 ppm Ta₂O₅ US\$/t conc. 1,500 US\$/t conc. 750 US\$/kg contained 130 US\$/t 10,000	

Note: dollar figures in Canadian dollars unless otherwise stated; feasibility study assumes exchange rate of US\$0.75/C\$



PHASE 1 FEASIBILITY RESULTS

Production Volumes

- Technical Grade Spodumene 6.0%
- Chemical Grade Spodumene 5.0%
- Tantalum Concentrate 20.0%

Recoveries

- Technical Grade Spodumene 6.0%
- Chemical Grade Spodumene 5.0%
- Tantalum Concentrate 20.0%

50,205 t
186,327 t
429 t

87%
90%
40%

Pilot Plant & Metallurgical results

- Outotec recovery modeling achieved 92%
- Over 5 years of metallurgical testing
- Minimum concentrate grade produced from composites at 5.87%
- 50 tonne Pilot confirmed feasibility robust recoveries & concentrate grade with 6.41% Li_2O with for Rose, and 6.56% Li_2O for Rose South
- Variability testing from 0.50% to 1.60% Li_2O through the deposit to test recovery consistency
- Tantalum recoveries average 69.1% in pilot testing



PHASE 1 OPEX DETAILS

Operating costs per tonne processed

Mining (\$3.75 per tonne)
Processing
G&A
Transportation (FOB Port)

\$66.56

\$30.69

\$16.14

\$12.15

\$7.57

Operating costs per tonne of concentrate

Mining
Processing
General & Administration
Transportation
Total Operating Costs
SG&A
Royalties
Total Operating Costs (w. SG&A & Royalties)
Less Tantalite Credit
Total Operating Costs (after tantalite credit)

C\$/t Li₂O
Concentrate

458

211

111

84

52

458

26

13

497

48

449

US\$/t Li₂O
Concentrate

344

158

83

63

39

344

20

10

373

36

337

Reserves

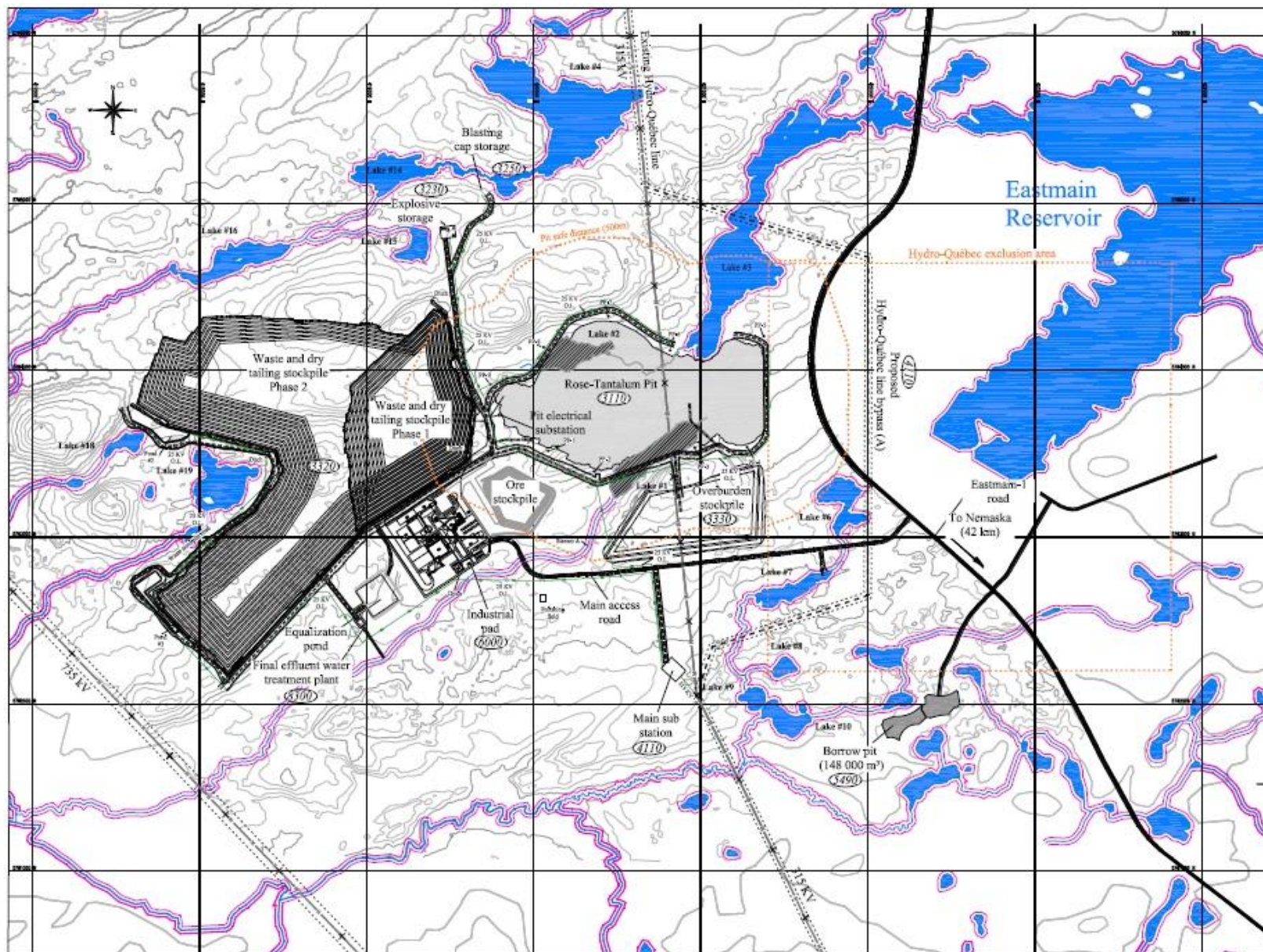
Category	Tonnage (Mt)	NSR (\$)	Li ₂ O _{eq} (%)	Li ₂ O (%)	Ta ₂ O ₅ (ppm)
Probable	26.8	148.99	0.96	0.85	133
Total	26.8	148.99	0.96	0.85	133

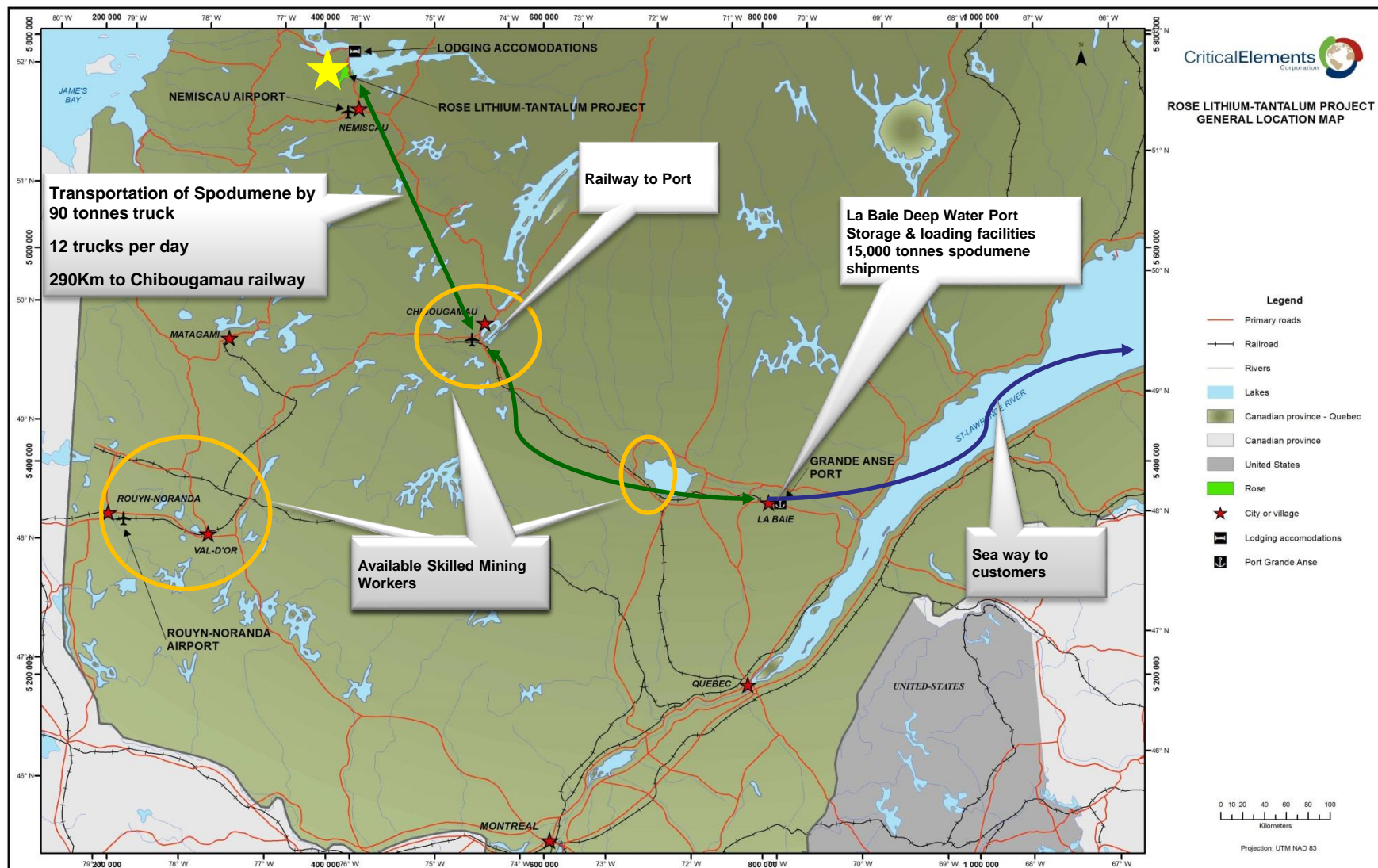
Resources

	Category	Tonnage (Mt)	NSR (\$)	Li ₂ O _{eq} (%)	Li ₂ O (%)	Ta ₂ O ₅ (ppm)
Indicated	Pit-constrained	30.0	161	1.04	0.93	150
	Underground	1.9	159	1.02	0.94	114
	Total Indicated	31.9	161	1.04	0.93	148
Inferred	Pit-constrained	2.0	137	0.90	0.79	153
	Underground	0.8	149	0.96	0.88	126
	Total Inferred	2.8	141	0.92	0.82	145



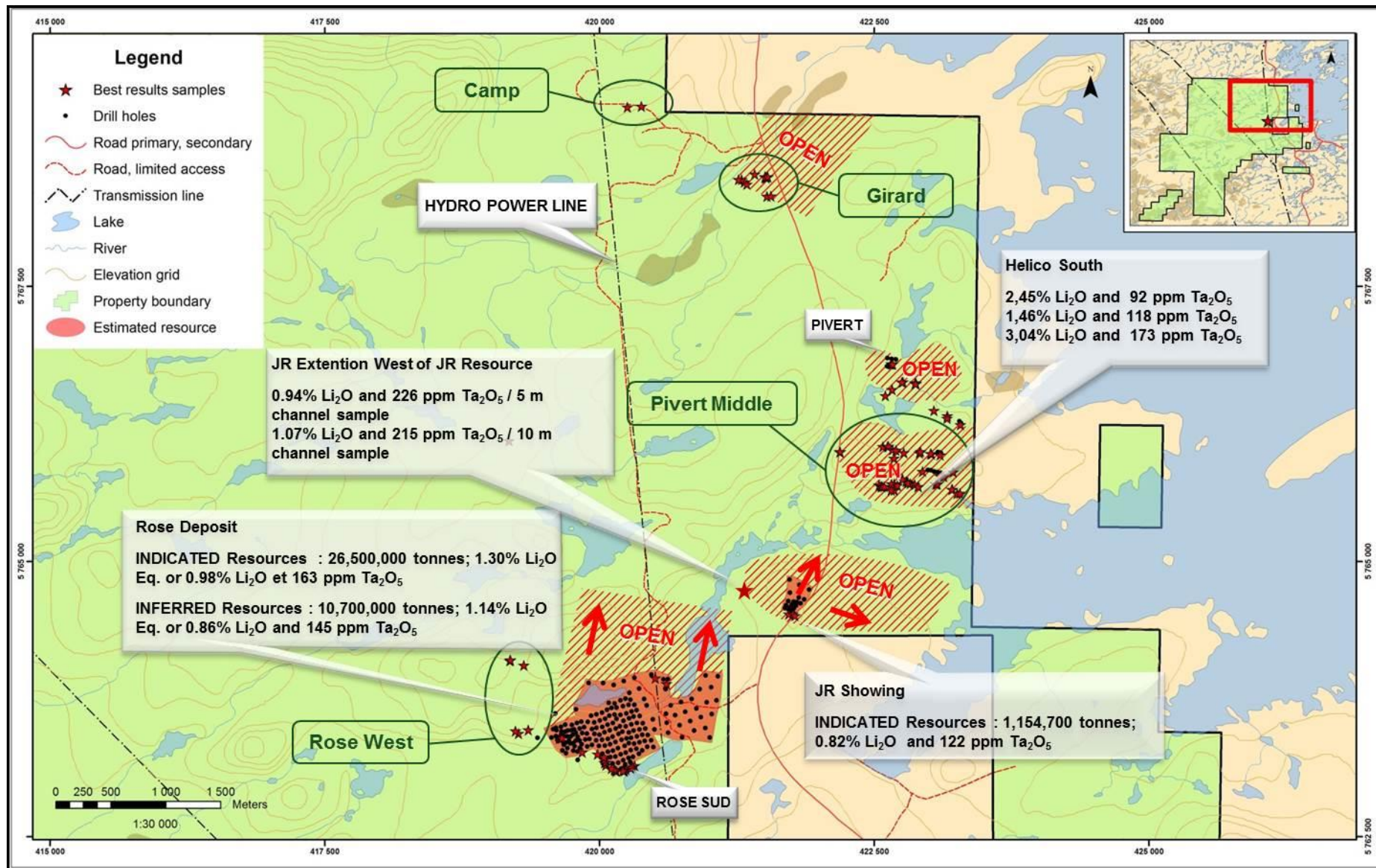
MINE INFRASTRUCTURE LAYOUT







DISTRICT SCALE POTENTIAL





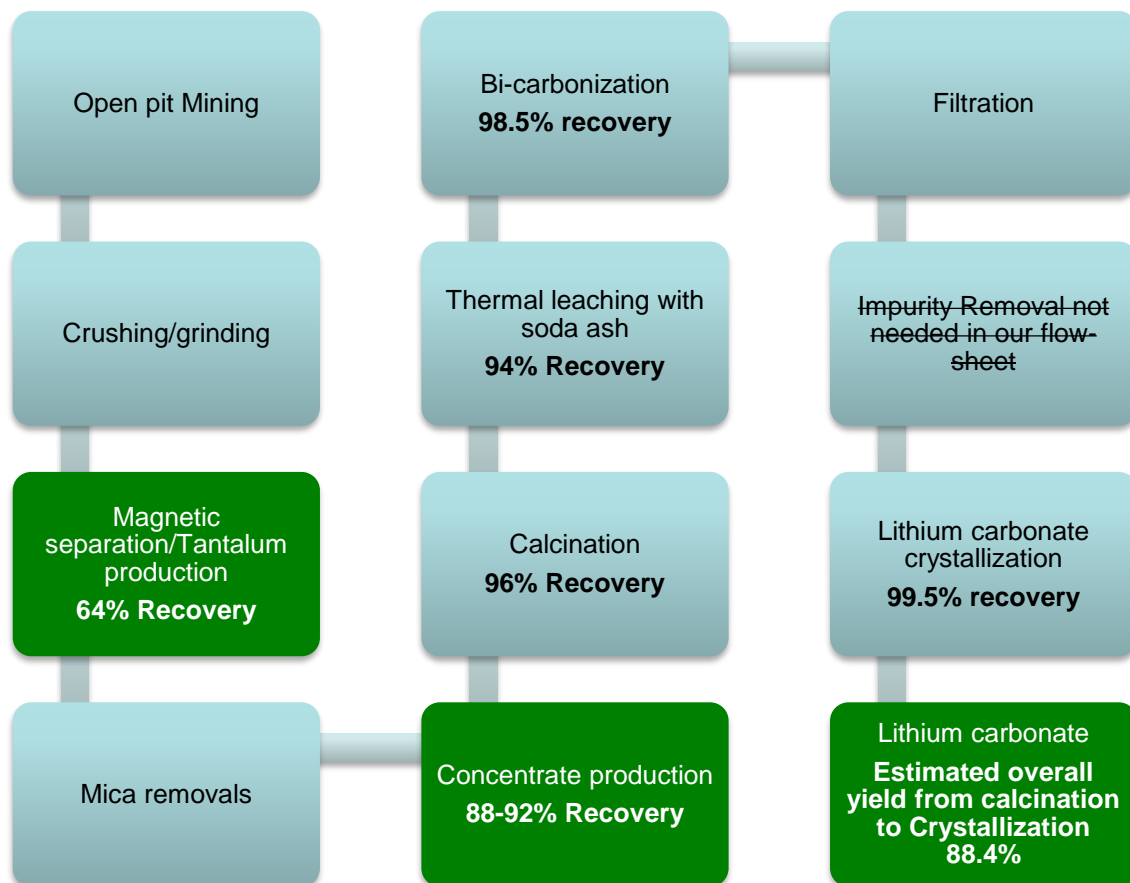
SIMPLE OPERATION WITH STRONG RECOVERIES

Key metallurgical factors:

- Low in-situ impurities such as iron & mica and favorable mineral crystal structure

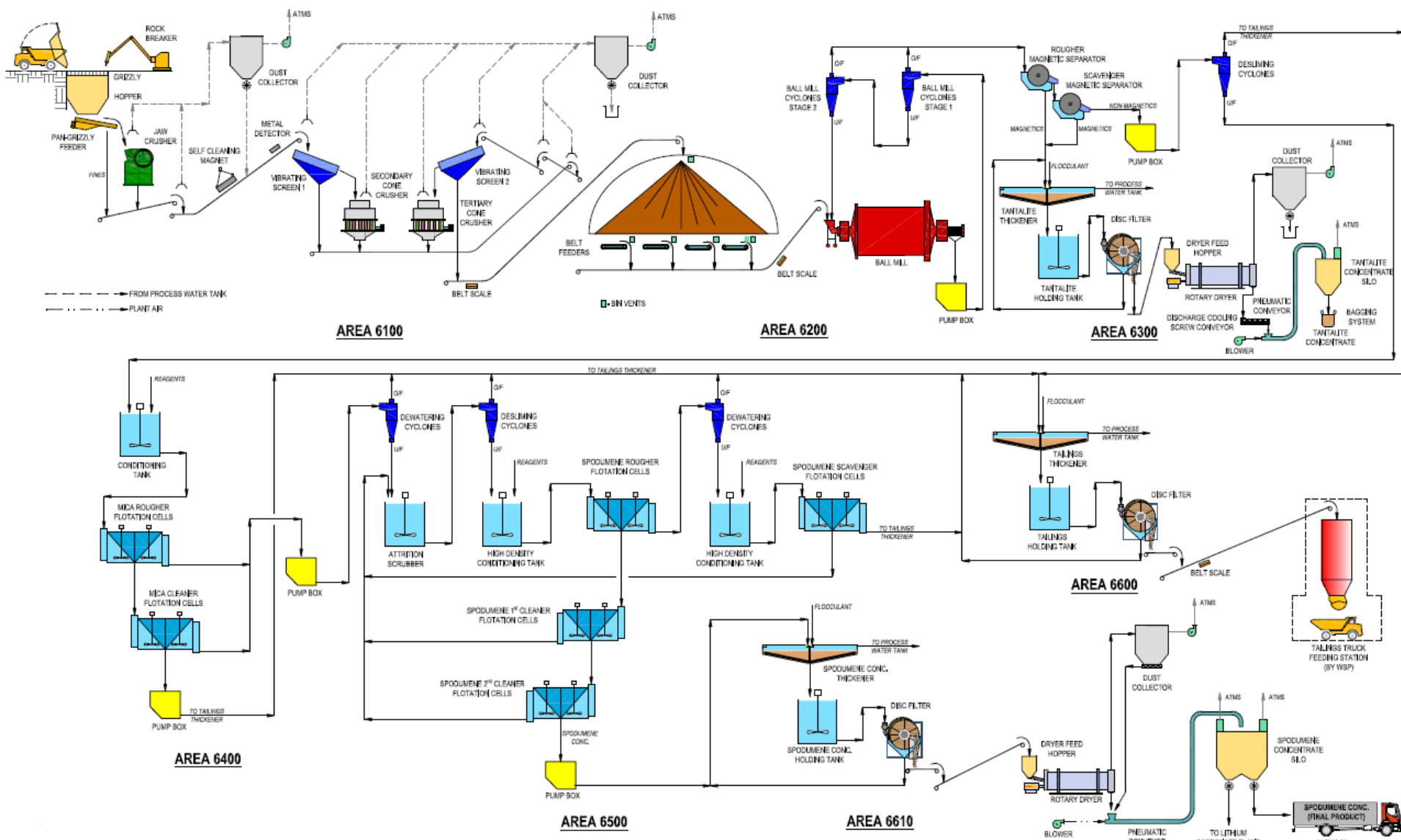
Results:

- Estimated overall yield from spodumene ore to lithium concentrate: 81.4%
- Overall industry benchmark yield at: 60-65%





PHASE 1 DETAILED FLOWSHEET

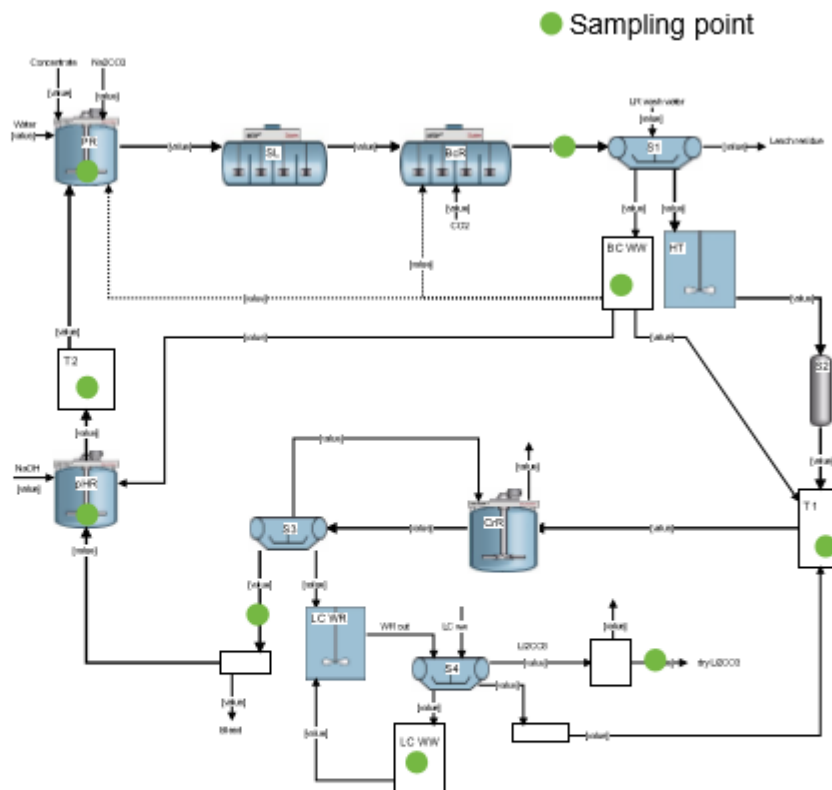




LITHIUM CARBONATE PILOT PLANT FLOWSHEET

Flowsheet

PR = Pulping reactor
 SL = Soda Leaching
 BcR = Bicarbonization
 BC WW = Wash water tank
 HT = Holding tank
 S2 = Polishing filter
 T1 = Buffer tank
 CrR = Crystallization reactor
 S3 = Li₂CO₃ filter
 LC WR = Li₂CO₃ wash reactor
 S4 = Washed Li₂CO₃ filter
 LC WW = Wash water tank
 pHR = Caustification reactor
 T2 = Buffer tank



Leaching

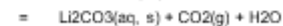
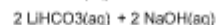
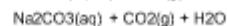
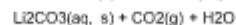
Bicarbonization

Bicarbonization

Crystallization

Caustification

Caustification



6 5/24/2017

© Outotec - All rights reserved



Outotec

Considered Cost Input:

Details	Phase 1	Phase 2 (Estimate)	Total
Capex	\$341.2 MM	\$190.0 MM	\$531.2 MM
Working Capital	\$88.8 MM	\$60.0 MM	\$148.8 MM
Total	\$430.0 MM	\$250.0 MM	\$680.0 MM

- All numbers in C\$
- MM = Million
- Accuracy +/- 15%

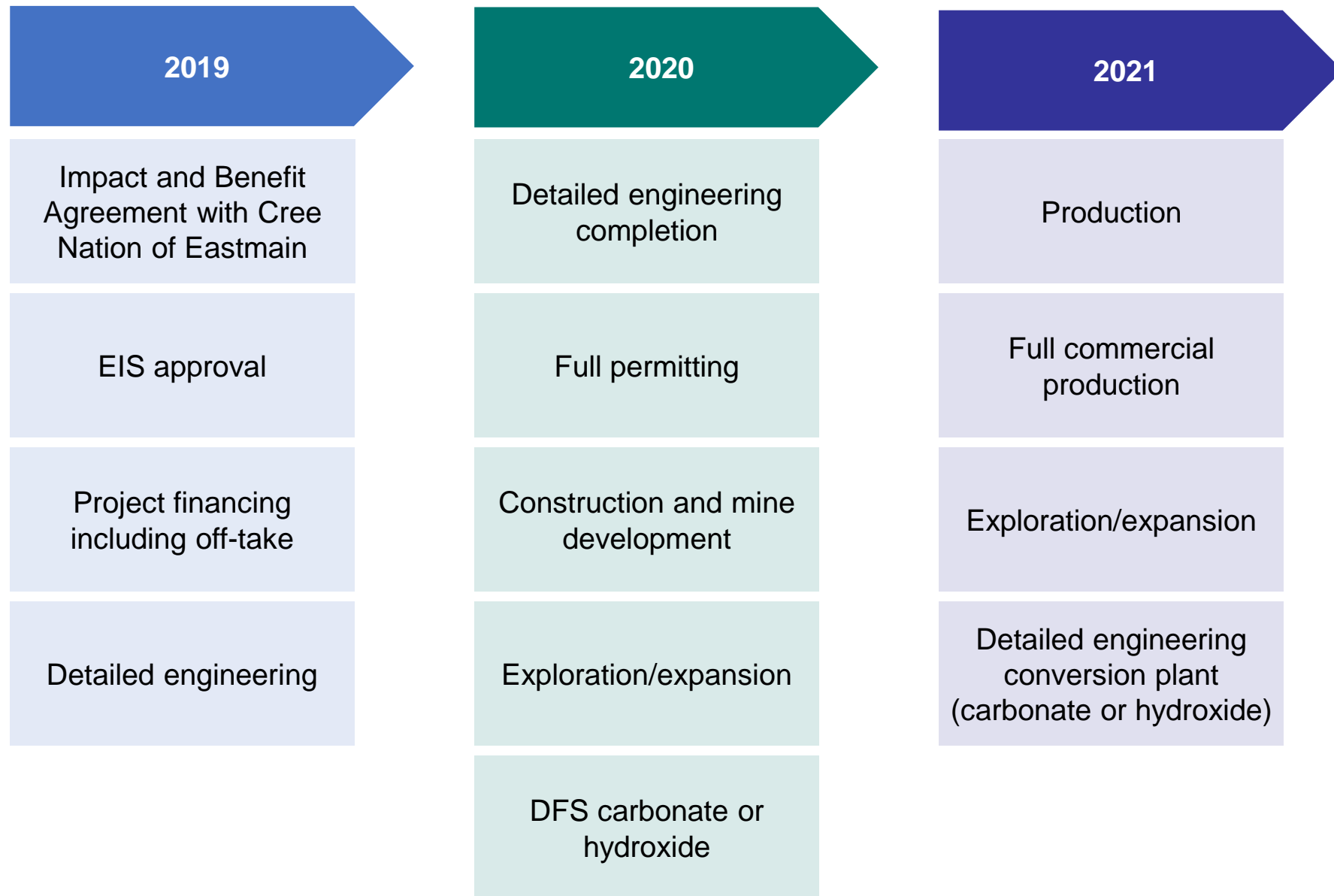
Cost Breakdown - Phase 1

Item	Initial Capital M C\$	Sustaining Capital M C\$	Initial Capital M US\$	Sustaining Capital M US\$
Direct Capital Estimate	235.1	93.8	176.3	70.4
Mining	49.3	89.5	37.0	67.1
Power & Electrical	27.8	0.6	20.8	0.4
Infrastructure	36.7	0.0	27.5	0.0
Process plant	111.9	0.0	83.9	0.0
TSF and Water management	9.5	3.8	7.1	2.8
Indirect Capital Estimate	74.9	0.4	56.2	0.3
Administration & Overhead	32.2	0.0	24.1	0.0
Project Development (Studies)	0.4	0.0	0.3	0.0
PCM, Other indirects & Other costs	42.3	0.4	31.7	0.3
Contingency	31.0	9.4	23.2	7.1
Mine Rehabilitation (incl. contingency)	0.0	17.8	0.0	13.4
Mine Rehabilitation Bond	0.2	5.4	0.1	4.0
Total Capital Estimate	341.2	126.8	255.9	95.1



Estimated Cost Breakdown - Phase 2

Item	Initial Capital M C\$	Initial Capital M US\$
Spodumene Calcining		
Outotec technology package	18.3	13.7
Engineering & Services	3.6	2.7
Piping & EIA	4.1	3.0
Construction	7.5	5.6
Spodumene Calcining	33.5	25.1
Leaching		
Outotec technology package	46.4	34.8
Engineering & Services	9.7	7.3
Piping & EIA	17.6	13.2
Construction	24.2	18.2
Leaching	97.8	73.4
Infrastructure	58.6	44.0
Working Capital	60.0	45.0
Total Capital Estimate	250.0	187.5





RELATIONS WITH FIRST NATIONS

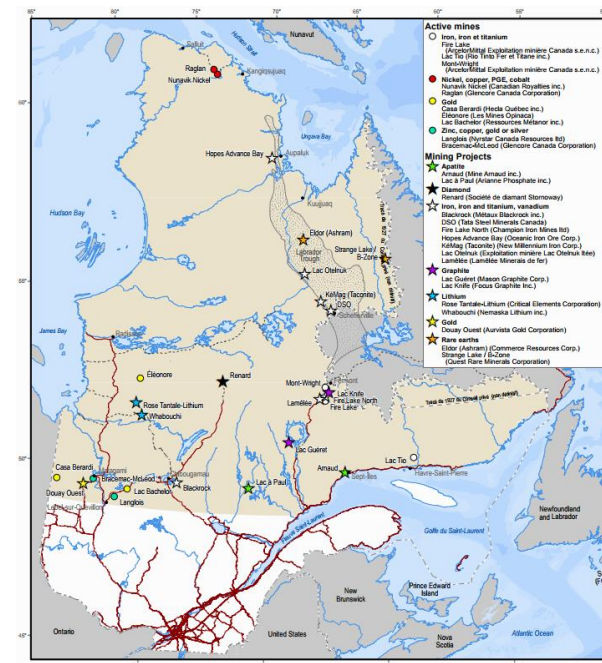


- Eeyou Istchee Territory pre-development in place since 2012
- Capacity study completed in 2014
- Impact and Benefit Agreement in progress with goal to sign by end of 2019
- Working on a 5 year training plan with the Eastmain community
- Discussions and planning with Cree Human Resource Development (CHRD)
- Discussions with Cree School Board
- Cree Coordinator hire in June 2017 (Lloyd Mayappo, Former Cree Chief of Eastmain 2005-2008)

Mining in Québec

- Québec is a vast province, covering 1.7 million km², of which only 5% is covered by mining exploration rights
 - As of December 2015, there were over 130k active mining titles in Québec, covering 6.1 million hectares, (only 3.7% of the province)
- Québec is Canada's largest producer of iron concentrate and zinc, the country's second-largest producer of gold, is the dominant source of lithium in Canada, and accounts for 20% of Canada's total mining output
- Ranked 6th by the Fraser Institute for most attractive jurisdictions for mining investment
 - Québec received \$2.6 billion in mining investments LTM as of May 2017

Map of Québec and Plan du Nord



Mining Projects in Québec

Stage	Base	Precious	Specialty	Total
Producing	8	14	2	24
Development	9	15	12	36
Exploration	98	286	86	470
Total	115	315	100	530

Note: Base metals include Fe, Zn, Ni, Cu and Pb; precious metals include Au, Ag, Pt, Pd; specialty products are all other mined products

Note: Exploration projects are mining projects at various stages with or without a resource estimate that do not yet have a published economic study

Note: Development projects are classified as mining projects with a published economic study



Favourable Business/Mining Environment

- Combined corporate tax rate of 26.8%, one of the lowest in North America
 - The Québec Economic Plan includes a reduction of \$1.3 billion to the tax burden of Québec companies, including a 25.0% increase to exploration allowances in Plan Nord territory
- Renowned for its proficient, highly skilled workforce, including 63,000 qualified engineers in the Ordre professionnel des ingénieurs du Québec alone
- The mining industry employs over 45,000 people in Québec
 - Supported by five universities in the province offering mining-related programs
 - Québec also boasts major world-class engineering firms with their own mining divisions, including Ausenco, WSP Global, Roche and SNC-Lavalin
- The Plan Nord aims to develop the area of the province North of the 49th parallel, representing over 70% of the province, with mining as one of its key industries
 - Hosts developed infrastructure, including deep-water ports, a strong rail network and highway system, as well as cheap and reliable electricity
- Offers simple claims and title registration; can be staked in the field or registered online



Favourable Permitting Process

- The Strategic Vision for Mining Development in Québec (2016) stipulates that the regulatory agencies (MERN, MDDELCC and MFFP) establish a single gateway to accelerate the processing of authorizations required to launch a mining project
- In parallel with its 104-jurisdiction 2016 Mining Survey, the Fraser Institute conducted a supplemental section on permit times for mining exploration, ranking Québec among the top jurisdictions worldwide across the permitting process:
 - 94% of those surveyed in Québec said that they were either confident or highly confident that that necessary permits would eventually be granted, ranking 9th overall on this metric
 - Québec also ranked 9th for percentage of respondents that indicated permitting timelines had either shortened or stayed the same over the last 10 years, at 63%
 - For exploration permits, 88% of respondents said that they expected procedures in Québec to take six months or fewer, ranking 4th in the survey
 - The province also ranked 12th for the percentage of respondents indicating timelines were met more than 60% of the time, and 13th for the percentage of respondents indicating that transparency in permitting either encourages or was not a deterrent to investment



MANAGEMENT AND BOARD OF DIRECTORS

Jean-Sébastien Lavallée, CEO / Mr. Lavallée has been the Chief Executive Officer of Critical Elements Corporation since 2009. From 2009 to 2017, he also served as President of the Company. Mr. Lavallée has also been the Executive Chairman and Exploration Manager of Quebec Precious Metals Corporation (TSX-V: CJC) since 2017, having previously been President and Chief Executive Officer of that company since 2012. Mr. Lavallée has been active in mining exploration since 1994. M. Lavallée sits on the Board of Directors of the Quebec Mineral Exploration Association « AEMQ » since October 2017. He is also Vice President of Consul-Teck Exploration Inc., a Val-d'Or-based consulting firm founded in 2003 that specializes in mining exploration in northern areas, with most of the firm's mandates involving the generation and execution of projects in remote areas. Mr. Lavallée has worked as a geologist for many companies, including Eoro Resources Ltd., Uracon Resources Ltd., Agnico-Eagle Mines Ltd., Noranda Minerals Inc., Champion Minerals Inc., Matamec Explorations Inc. and Atlanta Gold Inc. Mr. Lavallée has been responsible for the planning and execution of many exploration programs in recent years and has acquired solid experience in exploration project development

Steffen Haber, President / Dr. Haber was appointed President of the Company in January 2017. He was President and Chief Executive Officer of Rockwood Lithium GmbH when Chemetall GmbH was legally split off in 2012. From 2011 to 2012, he was Managing Director of Chemetall GmbH and since 2007 President of Chemetall's Lithium business. Prior to joining Chemetall GmbH, Dr. Haber worked in different executive positions for Sanofi-Aventis SA and its predecessor companies, in France. Dr. Haber completed his doctorate in organic chemistry at the University of Kaiserslautern, Germany, in 1991 and added one year as a Post-Doctorate at Ecole Polytechnique in Paris. In 1997, Dr. Haber earned his Bachelor of Science in Management from the International School of Management in San Diego, in the United States. Dr. Haber is a fellow of the International Directors Program of INSEAD

Marcus Brune, Vice President - Finance / Dr. Brune was Chief Financial Officer of Rockwood Lithium from 2011 until the acquisition of Albemarle in 2015. He left Albemarle in 2016 once the lithium business was successfully integrated into Albemarle's organizational structure. Prior to joining Rockwood Lithium, Dr. Brune had worked in different executive positions in corporate finance and M&A for Rockwood Holdings and its predecessor companies since 2004. Prior to that, he was with McKinsey as a strategy consultant for organizational development and management. Dr. Brune completed his doctorate in material sciences at the Technical University of Dortmund, Germany, after earning a physics degree

Nathalie Laurin, Secretary & CFO / Nathalie Laurin has more than 25 years of experience in administration and accounting. During her career, she has held a range of jobs that have gained her experience in the financial industry, project management and the natural resource sector. She has been self-employed since 2006 handling bookkeeping, audit file preparation, and management of legal, regulatory and administrative matters for many public companies



Jean-Raymond Lavallée, Director / Mr. Lavallée has more than 35 years of experience in mining exploration, as contractor, consultant and manager for several mining companies, such as Louvem, Soquem, James-Bay Development Corporation, Sullivan Consolidated, Cache Explorations Inc., Parquet Resources, Dumont Nickel Corporation, Westminer Canada Ltd, Baribec Management Inc., Exploration Ojibway Inc. and others. He was also controller for Mines Expert Inc., during the construction of the Doyon Mine. Mr. Lavallée is currently President of Consul-Teck Exploration, a consulting firm of Val-d'Or founded in 2003 that specializes in mining exploration in northern areas

Marc Simpson, Director / Mr. Marc Simpson is President and Chief Executive Officer of Uracon Resources. Mr. Simpson has worked in the mining and exploration industry for over 23 years. He has worked for junior, mid-tier and senior mining companies on projects both in Canada and worldwide, including Bema Gold (sold to Kinross for CDN\$3.5 billion in 2007), B2Gold, and Echo Bay Mines. Mr. Simpson has been involved in exploration and mining projects from grass roots exploration through to mine development and production. Mr. Simpson obtained his B.Sc. in Geology from the University of Manitoba and is a member of Association of Professional Engineers and Geoscientists of British Columbia and Association of Professional Engineers and Geoscientists of the Province of Manitoba

Charles B. Main, Director / Mr. Main brings over 30 years of experience in the mining and finance industries, having most recently served as Executive Vice President, Finance and Chief Financial Officer of Yamana Gold Inc. from August 2003 to March 2017. He is currently an Independent Director and Chair of the Audit Committee with Wesdome Gold Mines Ltd. Mr. Main is a Chartered Professional Accountant, member of the Chartered Professional Accountants of Ontario and Canada and began his career with 10 years at PriceWaterhouseCoopers. Mr. Main has also held positions including Director of Corporate Development with Newmont Capital Corporation, Vice President of Normandy Mining Limited and Outokumpu Mines Ltd., as well as Vice President, Finance of TVX Gold Inc. Mr. Main holds a Bachelor of Commerce from McGill University



Matthew Lauriston Starnes, Director | Mr. Lauriston Starnes is a lawyer with over 17 years of experience and the capacity to work in all areas of law, including civil law, common law, contract negotiation and drafting, arbitration, taxes and permits and government relations. Mr. Starnes is currently legal counsel for Sumitomo Corporation's Mineral Resources Division in Tokyo, Japan. Among other things, he was responsible for negotiating the joint venture agreement with a Canadian partner, the financing agreement with Japanese lenders and off take and distribution agreements with Japanese and other worldwide buyers for the Sierra Gorda project in Chile. He was also responsible for negotiating power, railway, port and transportation infrastructure agreements and helping the proponents establish good governance procedures for the project. He is also part of the team for the Ambatovy project in Madagascar, where he participated in preparing for completion, settlement negotiation with Korean contractors and sits on a number of committees. Prior to joining Sumitomo, he also was the General Counsel and Deputy CEO for the Ambatovy project. Mr. Starnes has also practiced as a corporate lawyer with major law firms in Montreal



Paul Bonneville, Project Manager | Mr. Bonneville has over 30 years of experience in the mining industry in Canada. He is a graduate of Queen's University in Mining Engineering. He was Vice President Operations for Scorpio Mining and Vice President Mines for Cadiscor Resources. He worked for Dumas Contracting as Project Manager at the Lapa and Goldex shaft projects and for Ross-Finlay Ltd., where he held a range of positions, including Project Manager at the Bell-Allard shaft project and the Silidor project, and at Pan American Silver Corp. He has also managed a number of overseas operations

Anne Gabor, Environmental Director | Mrs. Gabor has several years of experience in administration and project management. She has been involved with the company from the beginning of the analysis process of the environmental impact assessment. During her career, she has mainly worked in the field of healthcare. She has a bachelor's degree in Biochemistry and Independent Studies in Environmental Engineering from Concordia University

Lloyd Mayappo, Cree relation coordinator | Mr. Lloyd Mayappo has more than 30 years of experience as a foreman, project manager and contact person within the Eastmain Cree Nation. He has served 12 years in the political field as Councillor and Chief for Cree Nation of Eastmain with an excellent knowledge of the New Relationship Agreement with the Gouvernement of Quebec and Canada. Worked for Hydro-Québec/Société d'énergie de la Baie-James as an advisor of Cree Relations on the EM-1 A/Sarcelle/Rupert diversion project. Recently, was the Director of construction operations in civil works for Wechidodao a Cree company in partnership with Excavation Michel Paradis Inc. in Eastmain. Mr. Mayappo speaks fluently French, English and Cree



HUMAN RESOURCES – MINING



Project Workforce



- 300 Employees, (2 shifts of 150 employees)

- Workforce from the region, Eastmain, Nemaska, Cree Nation, Jamesians
- Employee transportation by airplane
- Work schedules of: 14/14





Description	Type	Education
<u>Mine</u>		
Mine Operation		
Mine Superintendant	Professional	University
Mine General Foreman	Skilled	College
Mine Supervisor	Skilled	Technical School
Drill Operator	Skilled	Technical School
Shovel Operator	Skilled	Technical School
Haul Truck Operator	Skilled	High School
Heavy Equipment Operator	Skilled	High School
Blaster	Skilled	Technical School
Mine Labourer	Unskilled	High School
Mine Maintenance		
Maintenance Superintendant	Professional	University
Mechanical General Foreman	Skilled	College
Mechanical Supervisor	Skilled	Technical School
Mechanic	Skilled	Technical School
Welder	Skilled	Technical School
Plumber	Skilled	Technical School
Carpenter	Skilled	Technical School
Electrician	Skilled	College
IT Technician	Skilled	College
Technical Services		
Chief Engineer	Professional	University
Mine Engineer	Professional	University
Mine Technician	Semi-Skilled	College
Surveyor	Semi-Skilled	Technical School
Chief Geologist	Professional	University
Geologist	Professional	University
Geology Technician	Skilled	College

Description	Type	Education
Processing and Chemical Mill & Chemical Administration		
Mill Superintendant	Professional	University
Mill Clerk	Skilled	Technical School
Mill Operation		
General Foreman	Professional	University
Shift Supervisor	Skilled	College
Crusher Operator	Skilled	Technical School
Crusher Helper	Unskilled	High School
Control Room Operator	Skilled	College
Grinding and Flotation Operator	Skilled	Technical School
Grinding and Flotation Helper	Unskilled	High School
Mill Labourer	Unskilled	High School
Metallurgist	Professional	University
Metallurgical Technician	Skilled	College

Description	Type	Education
Chemical Plant Operation		
Chemist	Professional	University
Operator	Skilled	Technical School
Mill & Chemical Maintenance		
Mechanical Foreman	Skilled	College
Electrical & Instrumentation Foreman	Skilled	College
Maintenance Planner	Skilled	Technical School
Mechanic	Skilled	Technical School
Maintenance Helper	Unskilled	Technical School
Electrician	Skilled	College
Instrumentation Technician	Skilled	College
Laboratory		
Assayer	Skilled	College
Laboratory Technician	Semi-Skilled	Technical School
Sample Preparation	Unskilled	Technical School





Description	Type	Education
Environment		
Biology Technician	Skilled	College
Human Resources and Health and Safety		
HR - H&S Superintendant	Skilled	University
Clerk	Semi-Skilled	Technical School
Security Guard	Unskilled	High School
Nurse	Skilled	College
H&S Coordinator	Skilled	College
H&S Clerk	Semi Skilled	Technical School
Janitor	Unskilled	High School
Accounting & Warehouse		
Accountant	Professional	University
Accounting Technician	Semi-Skilled	College
Warehouse Manager	Skilled	College
Warehouse Clerk	Semi-Skilled	High School



Critical Elements Lithium Corporation
1080, Côte du Beaver Hall
Bureau 2101
Montréal, Québec
H2Z 1S8

Phone : 514 904-1496

Fax : 514 904-1597

www.cec corp.ca

Jean-Sébastien Lavallée, CEO

Phone: 819 354-5146