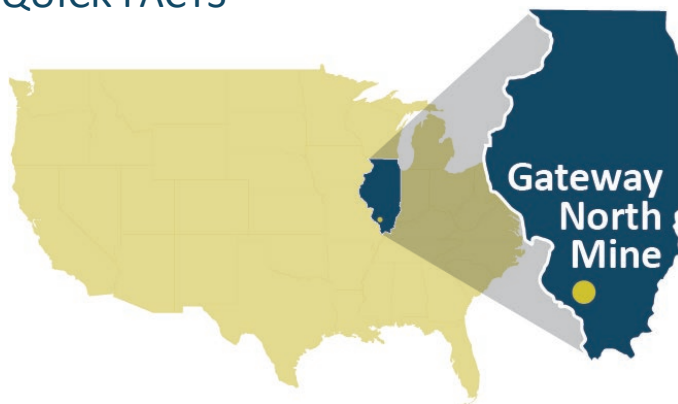


# Gateway North Mine



## QUICK FACTS



**MINE TYPE**  
Underground



**LOCATION**  
Randolph County near Coulterville, Ill.



**COAL TYPE**  
Thermal



**MINING METHOD**  
Continuous Miner

## DID YOU KNOW?



Gateway North Mine began shipping coal in 2015 after production was transitioned from the former Gateway Mine to the new reserve.



The mine is among the lowest cost coal mining operations in the region and sells primarily to industrial and major utility customers.

## MORE INFO

3.0  
Million

Tons of coal sold  
from the Gateway  
North Mine in 2019

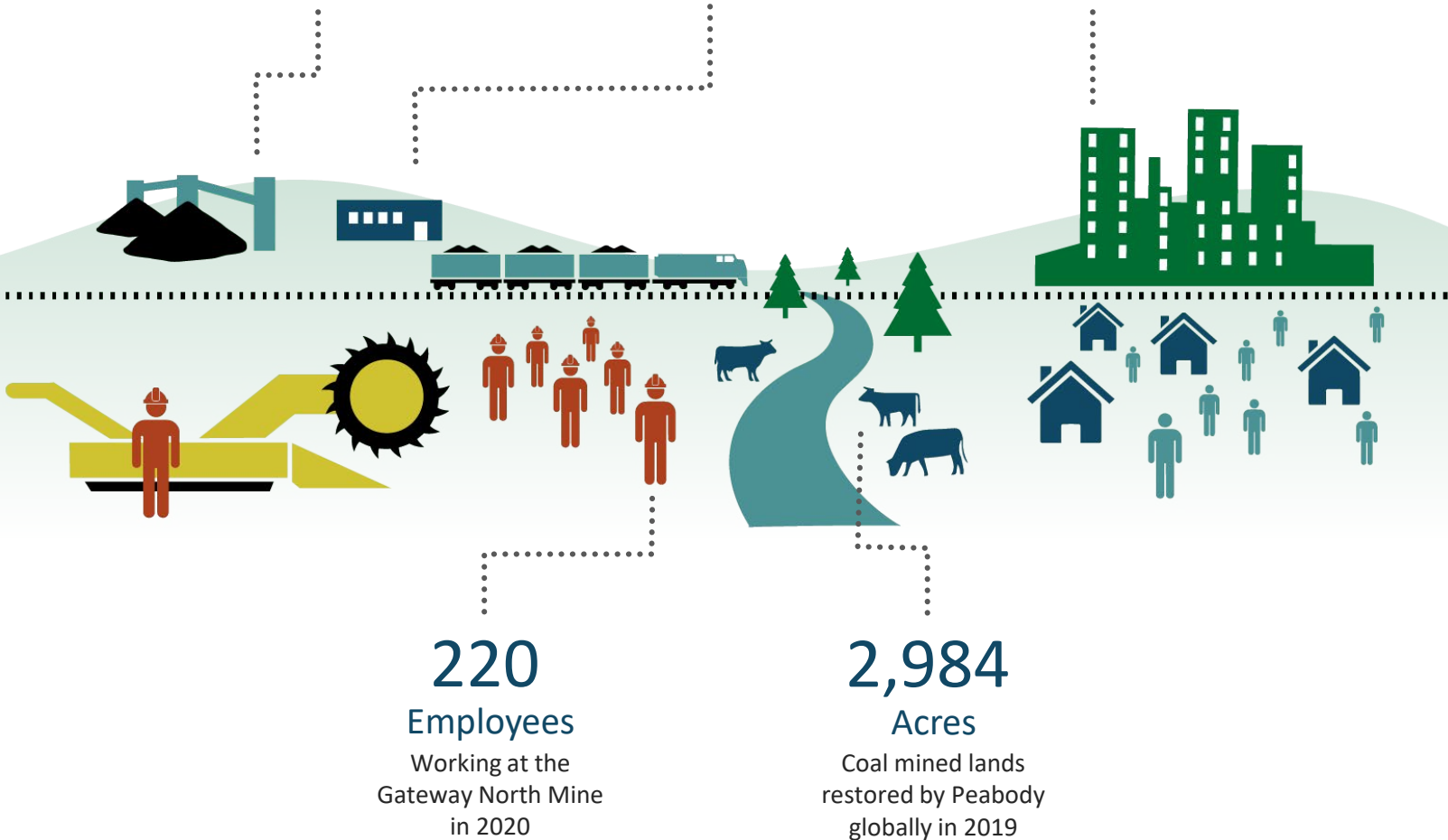
8<sup>th</sup>

Successive Year

With a global safety  
incidence rate  
below 2.00

\$205  
Million

Direct and indirect  
economic benefits from  
the mine in 2019



Peabody is the leading global pure-play coal company and a member of the Fortune 500, serving power and steel customers in more than 25 countries on six continents. The company offers significant scale, high-quality assets, and diversity in geography and products. Peabody is guided by seven core values: safety, customer focus, leadership, people, excellence, integrity and sustainability.