




puregold

Bringing gold to life.



Pure Gold Mining FORWARD LOOKING STATEMENTS

This Presentation contains forward-looking statements, including but not limited to statements in relation potential quantity and/or grade of minerals, potential size and expansion of a mineralized zone or mineral system, proposed timing of exploration and development plans, the growth potential of the Madsen Gold Project and opportunities for scalability, planned mining methods, mineral processing and sources of power, expected annual production, potential profitability of the Madsen Gold Project at lower metal prices, expected capital costs, anticipated permitting requirements and timing thereof, expected development schedule, expected timing of the completion of the Preliminary Economic Assessment for the Russet South, Fork and Wedge deposits, potential conversion of inferred resources to measured and indicated resources, potential extension and expansion of mineral resources and the focus of the Company in the coming months. Such statements are generally identifiable by the terminology used, such as "may", "will", "could", "should", "would", "anticipate", "believe", "intend", "expect", "plan", "estimate", "budget", "outlook" or other similar wording. By its very nature, such forward-looking information requires the Company to make assumptions that may not materialise or that may not be accurate.

Such forward-looking statements involve known and unknown risks, uncertainties and other important factors beyond the control of the Company that could cause the actual performance or achievements of the Company and/or its respective subsidiaries and/or its affiliated companies, to be materially different from any future results, performance or achievements expressed or implied by such forward-looking statements.

Such factors include, but are not limited to: interpretation of results at the Madsen Gold Project; changes in project parameters as plans continue to be refined; possible variations in grade or recovery rates; the costs and timing of the development of new deposits; failure of equipment or processes to operate as anticipated; the failure of contracted parties to perform; the timing and success of exploration activities generally; delays in permitting; possible claims against the Company; general business, economic, competitive, political and social uncertainties; future prices of gold and other metal prices; currency exchange rates and interest rates; favourable operating conditions; obtaining governmental approvals and financing on time; obtaining renewals for existing licences and permits and obtaining required licences and permits; labour stability; stability in market conditions; availability of equipment; accuracy of any mineral resources; successful resolution of disputes and anticipated costs and expenditures; the timing of future economic studies; and other risks of the mining industry. Many assumptions are based on factors and events that are not within the control of the Company and there is no assurance they will prove to be correct.

Furthermore, the forward-looking information contained in this Presentation is made as at the date of this Presentation and the Company does not accept any obligation to disseminate any updates or revisions to such forward-looking statements. The forward-looking information contained in this Presentation is expressly qualified by this cautionary statement.

Alternative performance measures are furnished to provide additional information. These non-GAAP performance measures are included in this news release because these statistics are key performance measures that management uses to monitor performance, to assess how the Company is performing, to plan and to assess the overall effectiveness and efficiency of mining operations. These performance measures do not have a standard meaning within International Financial Reporting Standards ("IFRS") and, therefore, amounts presented may not be comparable to similar data presented by other mining companies. These performance measures should not be considered in isolation as a substitute for measures of performance in accordance with IFRS.

The information in this Presentation or on which this Presentation is based has been obtained, in part, from sources that the Company believes to be reliable and accurate. However, none of the Company, the Company's directors, officers, employees, its shareholders or any of their respective advisors, or any other person has independently verified such information in this Presentation and no representation or warranty, express or implied, is made as to the fairness, accuracy, completeness or correctness of the information and opinions contained in this Presentation as a whole and no reliance should be placed on such information or opinions. Any opinions, projections, estimates or forecasts contained in this Presentation constitute a judgement of the Company only and should not be relied upon and are provided as at the date of this Presentation and are subject to change without notice. In giving this Presentation the Company does not undertake or agree to any obligation to provide you with access to additional information or to update the Presentation or to correct any inaccuracies or omissions from this Presentation which become apparent. To the extent permitted by law and regulation, neither the Company nor any officer, director, employee or representative of any of them accepts any responsibility or liability whatsoever for any loss, damage or liability howsoever arising, directly or indirectly, express or implied, contractual, tortious, statutory or otherwise from any use of this Presentation or its contents or otherwise arising in connection therewith. The recipient of this Presentation shall be responsible for conducting its own investigation and analysis of the information contained or referred to in this Presentation and for evaluating the merits and risks involved in the securities forming the subject matter of this Presentation.

This Presentation does not constitute an offer of securities for sale in Australia, Japan, the Republic of Ireland, the Republic of South Africa or the United States of America (each a "Restricted Territory") or in any other country where such distribution may lead to a breach of any legal or regulatory requirement, nor may they be distributed to persons (as defined in Regulation S under the United States Securities Act of 1933 (as amended)) with addresses in the United States, or to any individual outside a Restricted Territory who is a resident thereof in any such case for the purpose of offer for sale or solicitation or invitation to buy or subscribe any securities or in the context where its distribution may be construed as such offer, solicitation or invitation, in any such case except in compliance with any applicable exemption. It is the responsibility of each recipient outside the United Kingdom to ensure compliance with the laws of and regulations of any relevant jurisdiction. Neither this Presentation nor any copy of it may be taken or transmitted into or distributed in the United States or to any resident thereof.

Neither this presentation nor any copy hereof may be distributed in any other jurisdictions where its distribution may be restricted by law and any persons into whose possession this Presentation comes should inform themselves about, and observe, any such restrictions.

The content of the Presentation has not been approved by an authorised person within the meaning of the Financial Services and Markets Act 2000 ("FSMA"). Reliance on the Presentation for the purpose of engaging in any investment activity may expose an individual to a significant risk of losing all of the property or other assets invested. Any person who is in any doubt about the subject matter to which the Presentation relates should consult a person duly authorised for the purposes of FSMA who specialises in the acquisition of shares and other securities.

The presentation is exempt from the general restriction set out in section 21 FSMA on the communication of financial promotions on the grounds that it is directed only at (i) persons outside the United Kingdom (other than any jurisdiction where its distribution may be restricted by law); or (ii) persons having professional experience in matters relating to investments who fall within the definition of investment professionals in Article 19(5) of the Financial Services and Markets Act 2000 (Financial Promotion) Order 2005 (as amended); or (iii) persons in the business of disseminating information within the meaning of Article 47 of the Financial Services and Markets Act 2000 (Financial Promotion) Order 2005; or (iv) high net worth bodies corporate, unincorporated associations and partnerships and trustees of high value trusts as described in Article 49(2) of the Financial Services and Markets Act 2000 (Financial Promotion) Order 2005; or (v) persons who are 'professional clients' as defined in the FCA's Glossary and for the purpose of chapter 4 of the FCA's Conduct of Business Sourcebook. Any other person who receives this communication should neither rely on nor act upon the contents of this communication and should return or destroy or ignore it immediately without reproducing, distributing or passing it on to any other person.

Please note that information in this Presentation may not yet be announced or otherwise made public and as such constitutes non-public price sensitive information for the purposes of the Criminal Justice Act 1993 and inside information for the purposes of the Market Abuse Regulation 596/2014. You should keep confidential the information contained in this Presentation and not deal in any way in the securities of the Company until after the formal release of an announcement by the Company as to do so may result in civil and/or criminal liability.

Darin Labrenz, P.Geo., CEO for the Company and a "Qualified Person" under National Instrument 43-101, has reviewed and approved the scientific and technical information in this presentation.

The Presentation is not intended to be, and should not be construed as, any advice on the merits of, or any recommendation to any recipient or reader of this document in relation to, the purchase of shares in the Company. Recipients and readers of this document should seek their own independent legal, investment and tax advice as they see fit.

By receiving this Presentation you agree to be bound by the foregoing limitations. All currencies are reported in Canadian dollars unless otherwise specified.



puregold





Anglogold Ashanti
Cornerstone Investor

Eric Sprott
\$20 Million Investment - 2019

Rob McEwen
Cornerstone Investor

Newmont Goldcorp
Red Lake Mine Operator

Collective Strategic Ownership - >30%

These strategic investors recognize the monumental opportunity at the Madsen Red Lake Mine to create the next iconic Canadian producer

Pure Gold Mining
TRANSFORMATIVE GROWTH

Red Lake Mine – Newmont Goldcorp

- 1995 production **53,876 oz @ 8.1 g/t Au**
- 1996 high grade discovery @ ~1400 m depth
- 2004 production **552,000 oz @ 77.1 g/t Au**

Macassa Mine – Kirkland

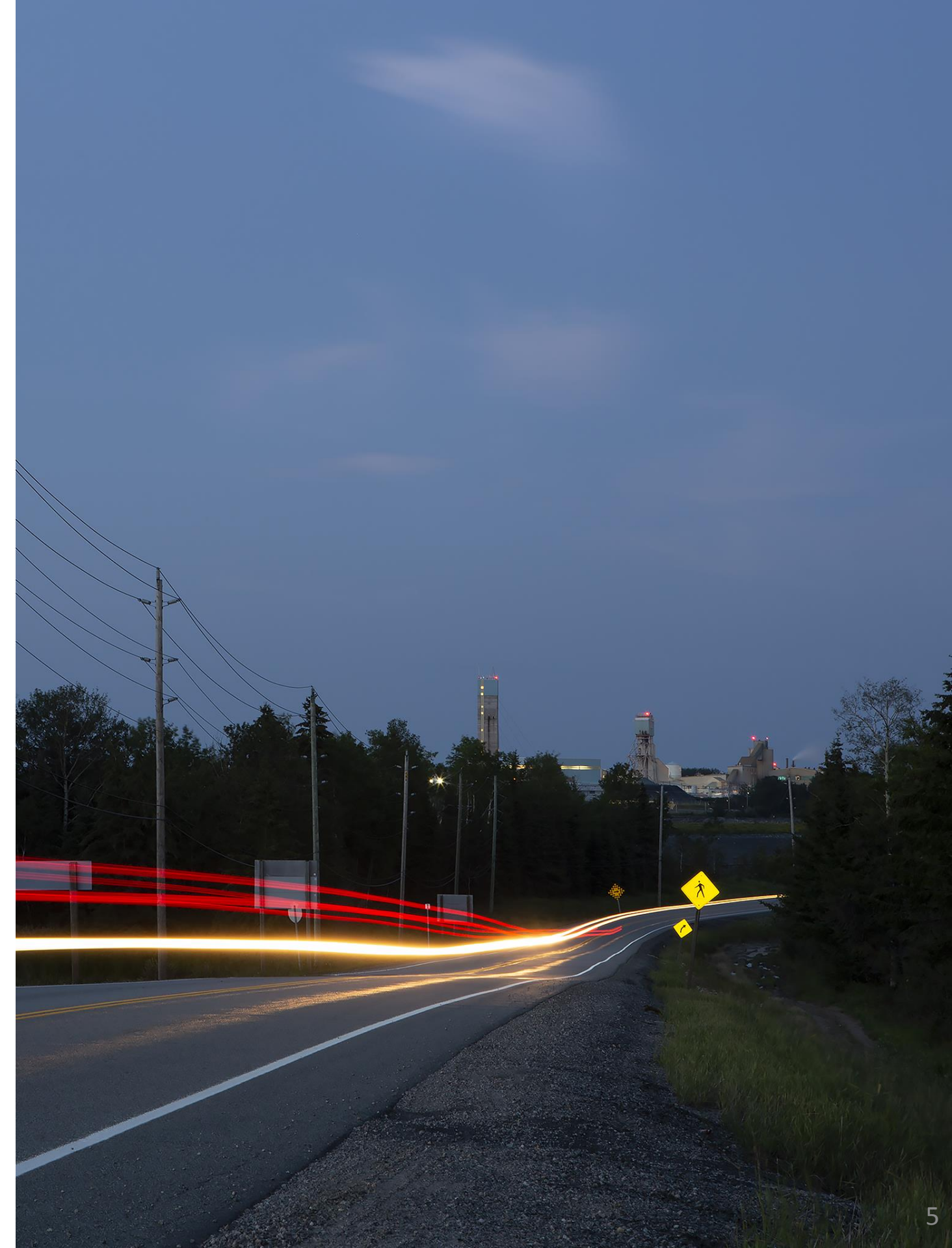
- 2000's average production **31,000 oz @ 11.2 g/t Au**
- 2005 high grade discovery of the SMC
- 2018 production **240,126 oz @ 21.6 g/t Au**

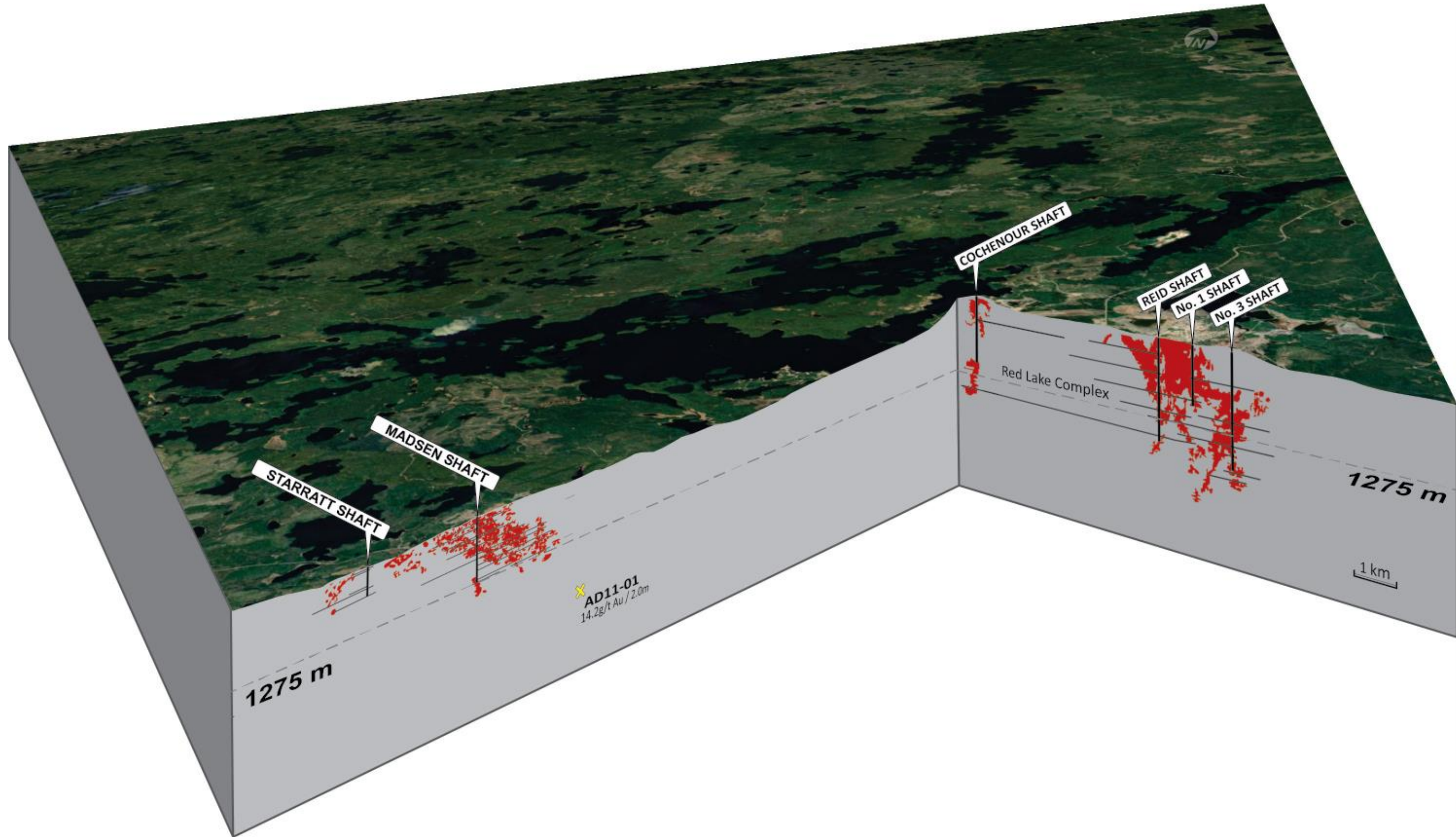
Fosterville Mine – Newmarket/ Kirkland

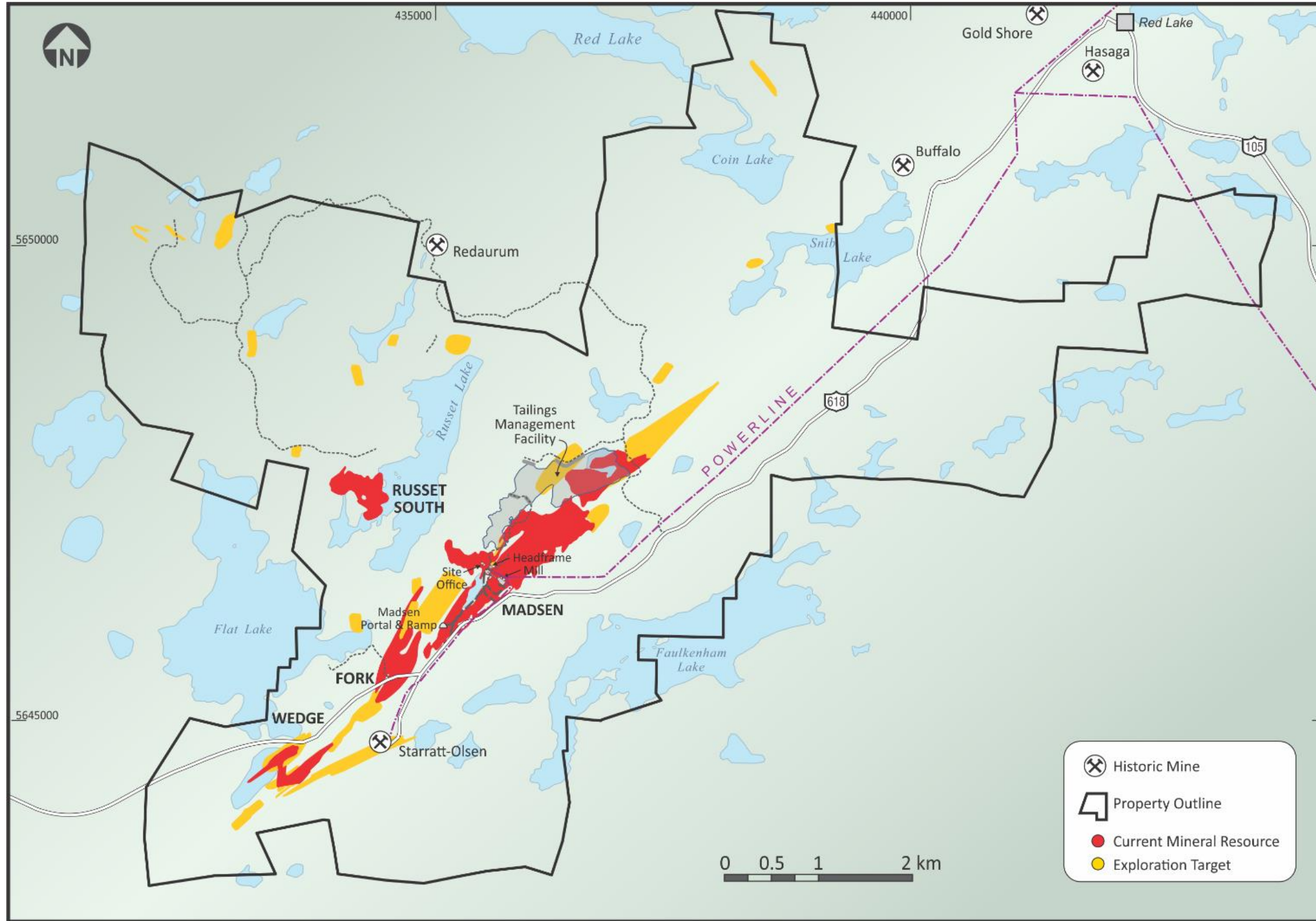
- 2007 production of **82,000 oz @ 3.2 g/t Au**
- 2009 – 2016 changed ownership multiple times
- 2015+ discovery of increasing grade to depth
- 2016 production **151,755 oz @ 7.6 g/t Au**
- 2018 production **356,230 oz @ 24.9 g/t Au**

Newmont Goldcorp's Red Lake Mine Complex pictured at right. **25+ Million oz Au and growing**

TOP TIER ASSETS, TOP TIER JURISDICTIONS







FEASIBILITY STUDY

Madsen Red Lake Mine

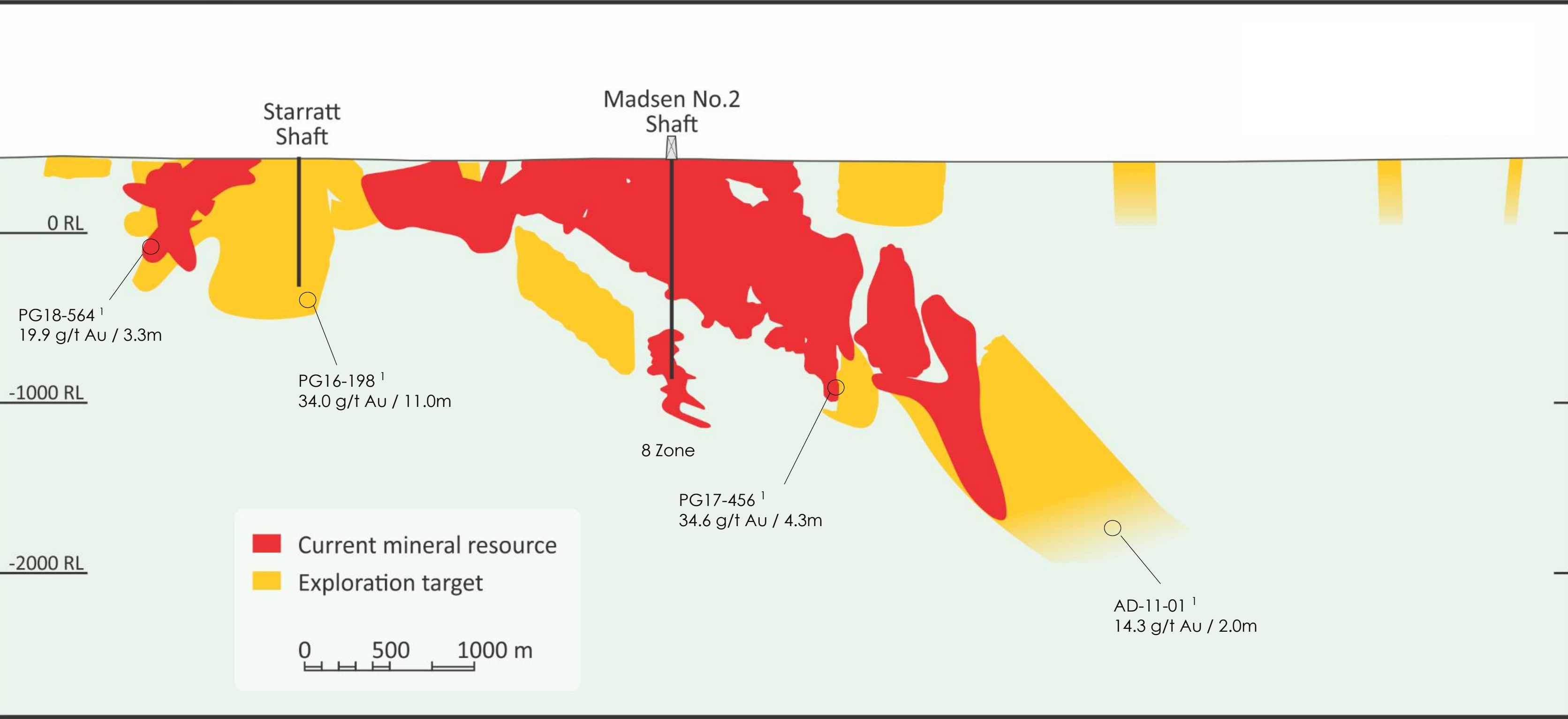
- Robust, high margin underground mine with Probable Mineral Reserves of 1.0M ounces at 9.0 g/t gold in 3.5Mt^{1,2}
- 12 year mine life
- Opportunity for resource conversion and expansion
- Central processing facility
- Strong growth upside

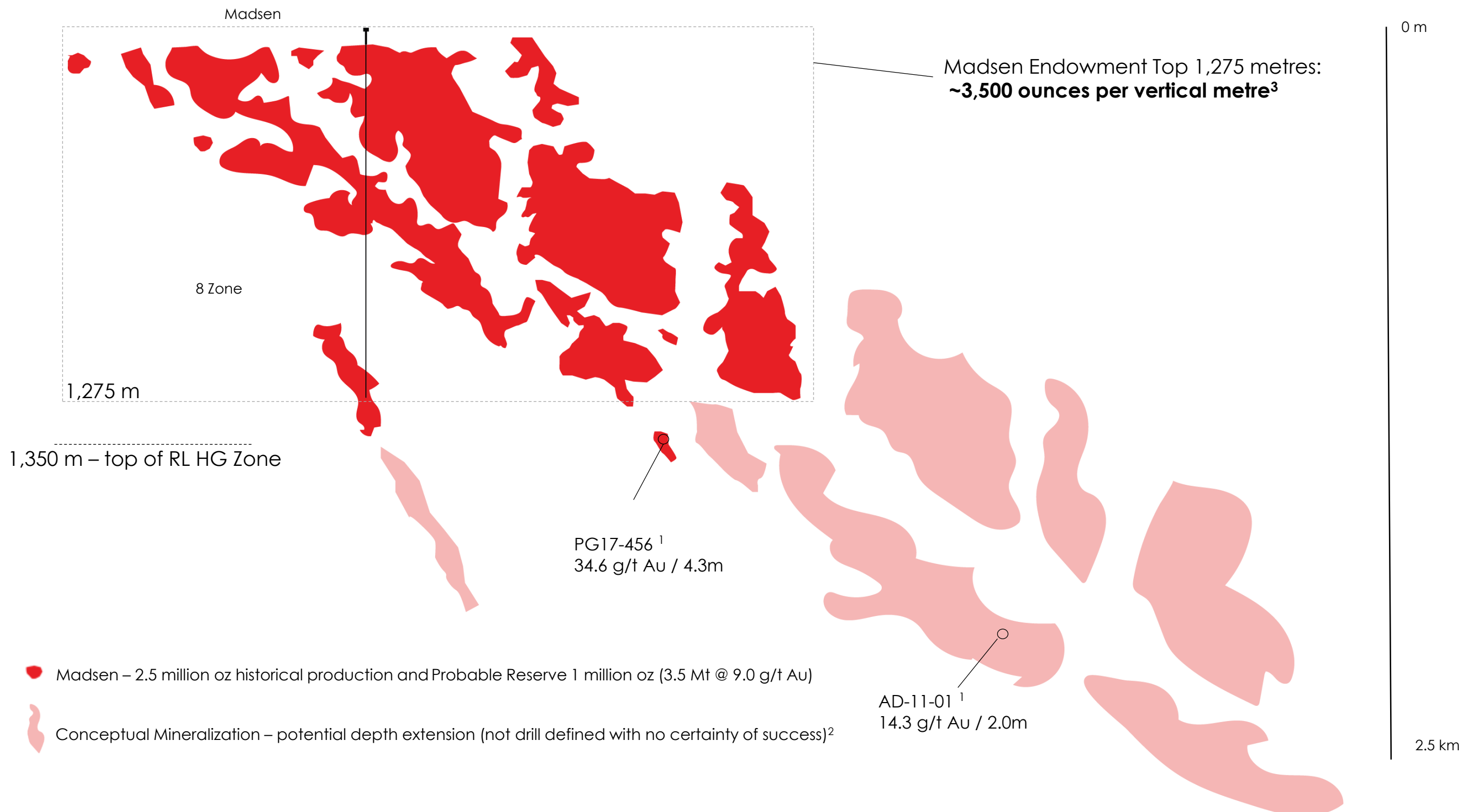
NEWLY DISCOVERED NEAR SURFACE EXTENSIONS^{1,2}

- **Indicated** 1.5Mt for **206,000 ounces** at 8.3 g/t gold
- **Inferred** 1.0Mt for **226,000 ounces** at 7.1 g/t gold
- Exploration and expansion drilling ongoing
- Recent Bonanza Grade Intercepts

(1) See the technical report titled "Madsen Gold Project Technical Report Feasibility Study for the Madsen, Red Lake, Ontario Canada" effective February 5, 2019, dated July 5, 2019 for further information, available at www.puregoldmining.ca or under the Company's Sedar profile at www.sedar.com

(2) Mineral Resources are inclusive of Mineral Reserves and are reported with an effective date of February 5, 2019. Mineral Resources that are not included in the Minerals Reserves do not have demonstrated economic viability. Mineral Reserves are reported using a 4.75 g/t gold cut-off excepting a 4.00 g/t cut-off for the McVeigh Zone. Mineral Resources are estimated using \$1,275/oz and 95% recovery and are reported at a 4.0 g/t gold cut-off.





● Madsen – 2.5 million oz historical production and Probable Reserve 1 million oz (3.5 Mt @ 9.0 g/t Au)

● Conceptual Mineralization – potential depth extension (not drill defined with no certainty of success)²

(1) See news releases dated September 26, 2017 and June 18, 2018.
 (2) Conceptual mineralization shapes indicated are conceptual only and have been interpreted from very limited drilling data including re-logging of drill hole AD-11-01. While it is geologically reasonable that additional exploration below the Madsen deposit could identify additional resources of the same style and nature there is no certainty that such mineralization would form mineral resources or that these would be converted into mineral reserves, once economic considerations are applied.
 (3) The mineral endowment at Madsen includes mineralization that has been mined in the past which is considered historical in nature and mineralization that forms the current Mineral Resource. There is no certainty that the mineral endowment recognized will continue beyond the current resource.



- Extensive production dataset
- Track record of safe, responsible and successful discovery
- Traditional geoscience methods augmented by application of smart technologies
- Robust geological framework established, controls on mineralization well understood from field studies



Fully Funded for Construction of the Madsen Red Lake Mine^{1,2,3}

- C\$84m Treasury: includes July 2019 C\$47.5m equity raise
- Construction underway: goal of first pour end of 2020
- Growth strategy: exploration & expansion of new discoveries 20,000 metre drill program ongoing

US\$90M Financing Package via Sprott Resource Lending Corp²

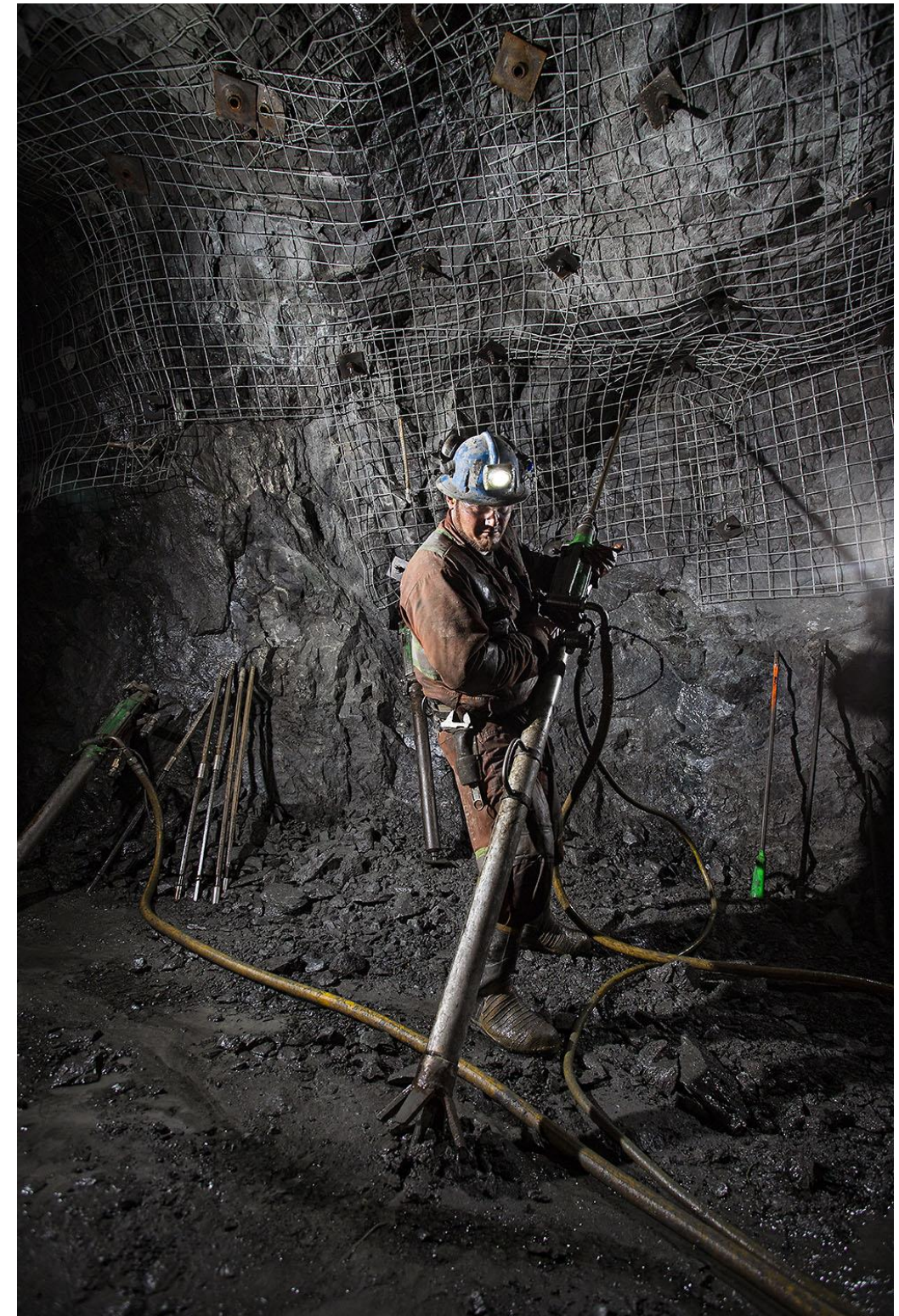
- US\$90m Total value of Financing Package
- US\$65m Credit Facility: received first tranche, US\$10m cash
- US\$25m Callable Gold Stream: received immediate US\$25m cash

Optionality of Repayment²

- Optionality of repayment of both the Facility and Gold Stream in a rising gold price environment provides an opportunity to refinance once in production and generating solid cash flows from the mine

Perfect timing

- We are delivering the Madsen Red Lake Mine into a gold market that is rising every day



(1) Based on the Feasibility Study, February 2019, See the technical report titled "Madsen Gold Project Technical Report Feasibility Study for the Madsen, Red Lake, Ontario Canada" effective February 5, 2019, dated July 5, 2019 for further information, available at www.puregoldmining.ca or under the Company's Sedar profile at www.sedar.com

(2) See News Release NR 19-21: Pure Gold Secures US\$90 Million Construction Finance Package And Announces Construction Decision For Madsen Red Lake Mine , August 7, 2019

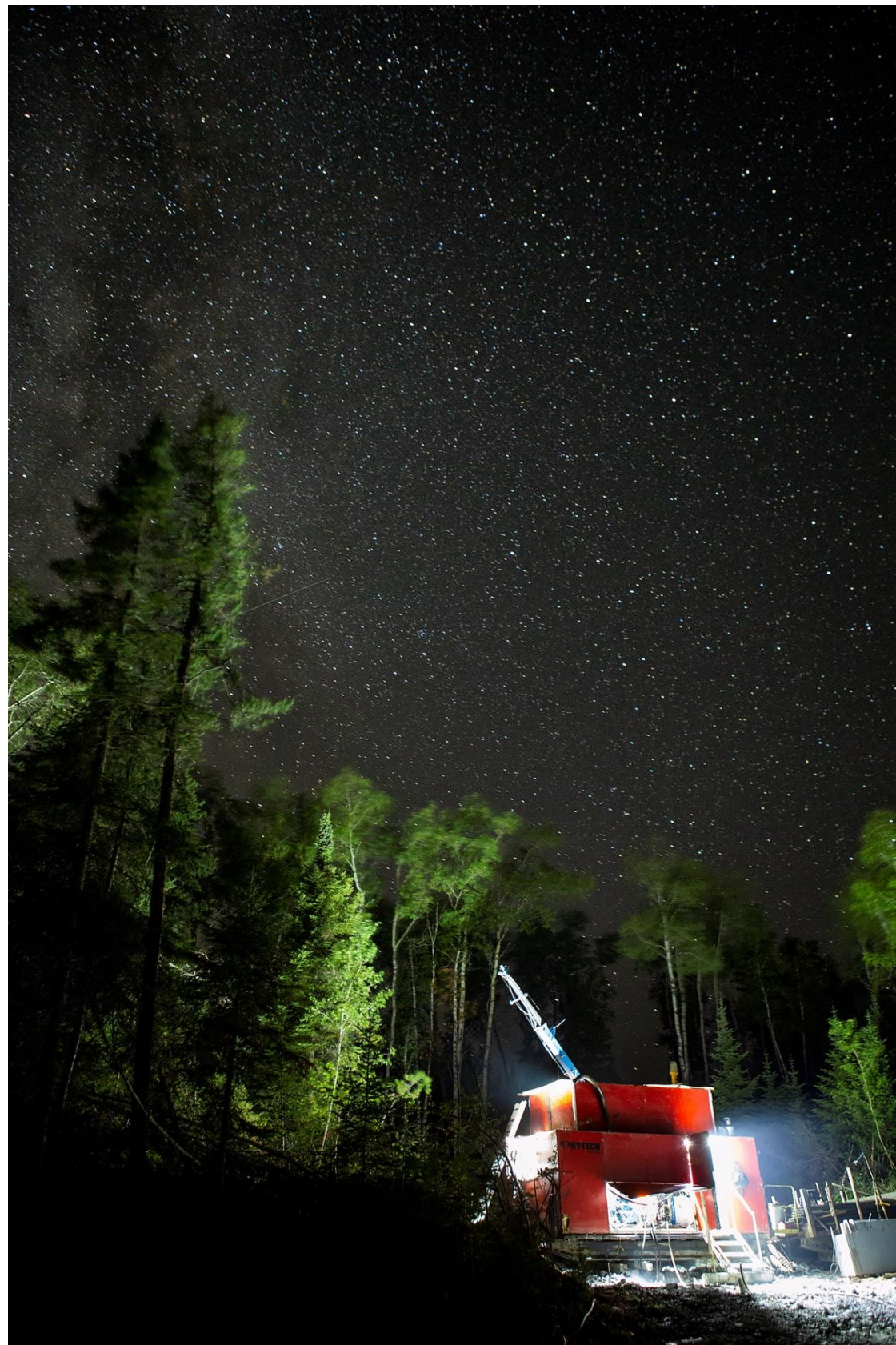
(3) See News Release NR 19-18: "Pure Gold Closes Previously Announced Bought Deal Private Placement and Non-Brokered Private Placement Raising Gross Proceeds of C\$47.5 Million", July 18, 2019.

(4) Via July 2019 non-brokered private placement financing Sprott Resource Lending Corp. owns 4.4% of outstanding shares on non-diluted basis. See News Release NR 19-21 August 7, 2019



Madsen Red Lake Mine
INFRASTRUCTURE ADVANTAGE





Key Attributes

Proven, Large high-grade gold system

- 2.6 million ounces historical production ¹
- 2.1 million ounce indicated mineral resource (7.2 million tonnes at 8.9 g/t Au) ²
- 0.5 million ounce inferred mineral resource (1.9 million tonnes at 7.7 g/t Au) ²

2019 Feasibility Study ¹

- Probable Mineral Reserve of one million ounces at 9 g/t Au in 3.5 million tonnes ²
- C\$95m initial capex, includes C\$8m contingency
- After-tax NPV of C\$247m and IRR of 36% at base case metal price of US\$1275/oz
- Life of Mine (LOM) cash cost of US\$607/oz and All-in Sustaining Cash Cost of US\$787/oz ³
- 13 months pre-production schedule
- Peak production of 125,000 ounces gold per annum
- Years 3 to 7 average 102,000 ounces gold per annum
- Newly discovered extensions show potential for growth
- Continued exploration and expansion drilling ongoing
- Deep knowledge and geological understanding of Red Lake. 1,200,000 metres of drilling

(1) See the technical report titled "Madsen Gold Project Technical Report Feasibility Study for the Madsen, Red Lake, Ontario Canada" effective February 5, 2019, dated July 5, 2019 for further information, available at www.puregoldmining.ca or under the Company's Sedar profile at www.sedar.com

(2) Mineral Resources are inclusive of Mineral Reserves and are reported with an effective date of February 5, 2019. Mineral Resources that are not included in the Minerals Reserves do not have demonstrated economic viability. Mineral Reserves are reported using a 4.75 g/t gold cut-off excepting a 4.00 g/t cut-off for the McVeigh Zone. Mineral Resources are estimated using \$1,275/oz and 95% recovery and are reported at a 4.0 g/t gold cut-off.

(3) This is a non-GAAP performance measure. See "Non-GAAP" Measures and other Financial Measures cautionary language on slide 2. C\$ to US\$ exchange rate of 0.75

NEAR TERM **PRODUCTION**

High margin mine with robust economics ¹

- Highest grade underground development project in Canada at 9.0 g/t gold
- Low capital intensity project with initial capital requirement of C\$95mm
- Cash costs of US\$607/oz life-of-mine ³
- Base case - After-tax IRR of 36% at US\$1275 gold
- Current After-Tax IRR 51% at US\$1500 gold, After Tax NPV_{5%} of C\$390m

SCALABLE OPERATION

Three newly discovered extensions¹

- Newly discovered extensions show potential for near term resource expansion ¹
- 206,000 ounces of indicated resource ²
- 226,000 ounces of inferred resource ²
- Exploration ongoing

GROWTH OPPORTUNITY

Strong exploration Upside

- Patented land position of 47 km²
- Controls on mineralization well understood
- Strong, open +7 km mineral system with high grade gold mineralization intersected ~1 km below mineral reserves
- Track record of success

REDUCED RISK ON EXECUTION

Significantly de-risked project

- Mine friendly jurisdiction of Red Lake, Ontario, Canada
- Fully funded
- Significant permits in place
- Supportive local communities
- Project Agreement signed and implemented with First Nations
- 13-month project build

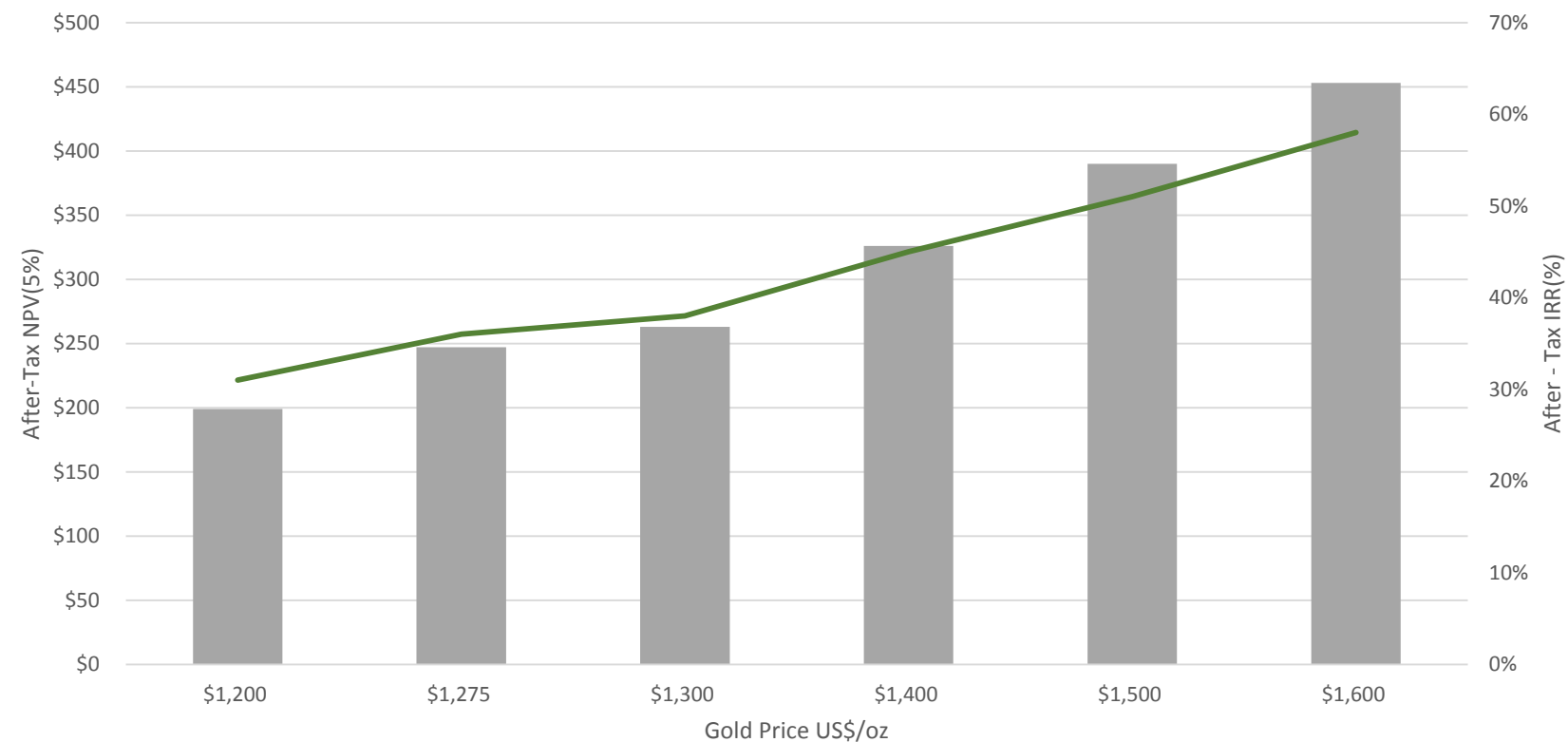
(1) See the technical report titled "Madsen Gold Project Technical Report Feasibility Study for the Madsen, Red Lake, Ontario Canada" effective February 5, 2019, dated July 5, 2019 for further information, available at www.puregoldmining.ca or under the Company's Sedar profile at www.sedar.com

(2) Mineral Resources are inclusive of Mineral Reserves and are reported with an effective date of February 5, 2019. Mineral Resources that are not included in the Minerals Reserves do not have demonstrated economic viability. Mineral Reserves are reported using a 4.75 g/t gold cut-off excepting a 4.00 g/t cut-off for the McVeigh Zone. Mineral Resources are estimated using \$1,275/oz and 95% recovery and are reported at a 4.0 g/t gold cut-off.

(3) This is a non-GAAP performance measure. See "Non-GAAP" Measures and other Financial Measures cautionary language on slide 2. C\$ to US\$ exchange rate of 0.75

GOLD PRICE SENSITIVITY ¹

Gold Price (US\$/oz)	\$1,200	\$1,275	\$1,300	\$1,400	\$1,500	\$1,600
Pre-Tax NPV_{5%} (\$m)	\$284	\$353	\$376	\$468	\$560	\$652
After-Tax NPV_{5%} (\$m)	\$199	\$247	\$263	\$326	\$390	\$453
Pre-Tax IRR	36%	43%	45%	53%	61%	69%
After-Tax IRR	31%	36%	38%	45%	51%	58%

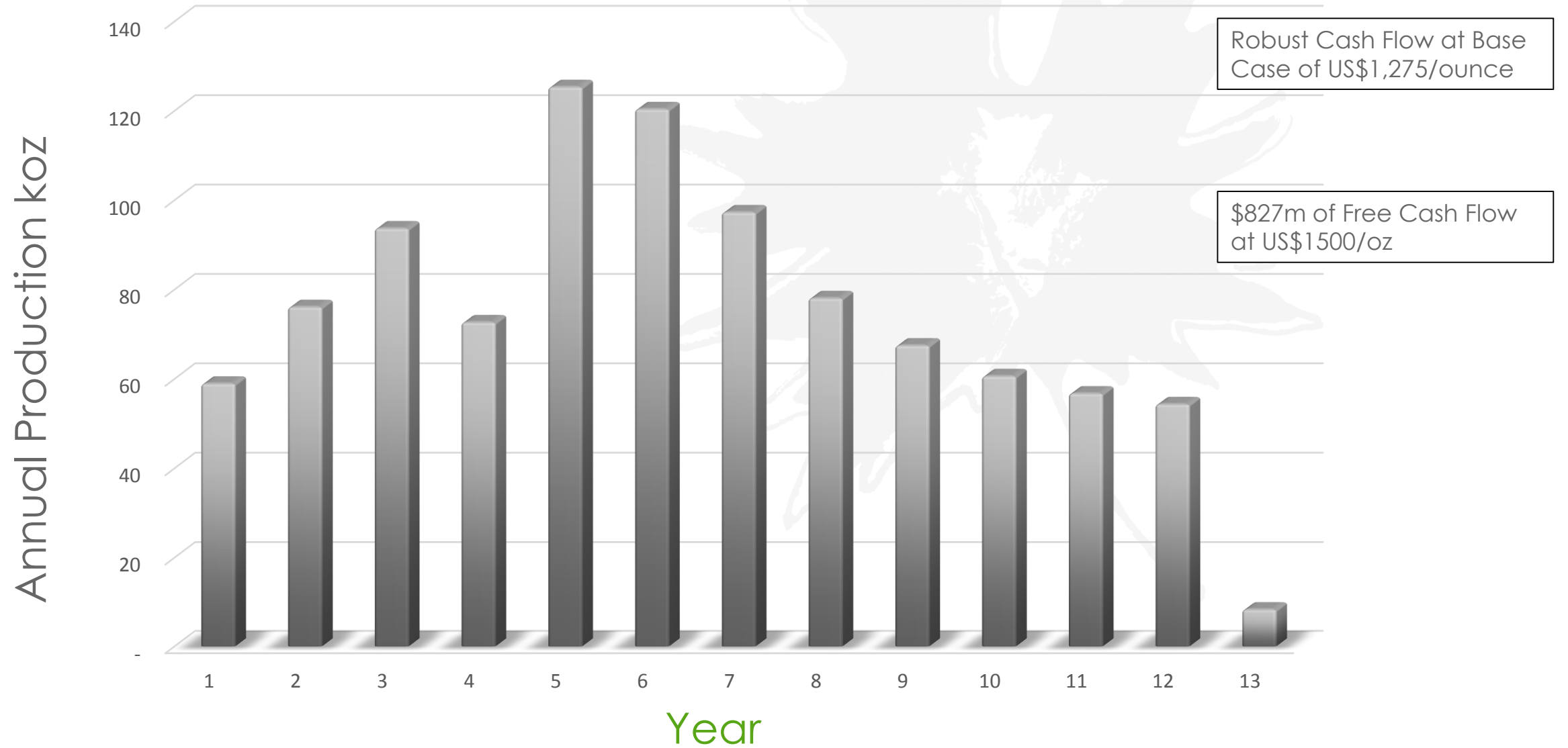


(1) See the technical report titled "Madsen Gold Project Technical Report Feasibility Study for the Madsen, Red Lake, Ontario Canada" effective February 5, 2019, dated July 5, 2019 for further information, available at www.puregoldmining.ca or under the Company's Sedar profile at www.sedar.com

102,000 oz
 AVERAGE ANNUAL PRODUCTION
 YEARS 3 - 7

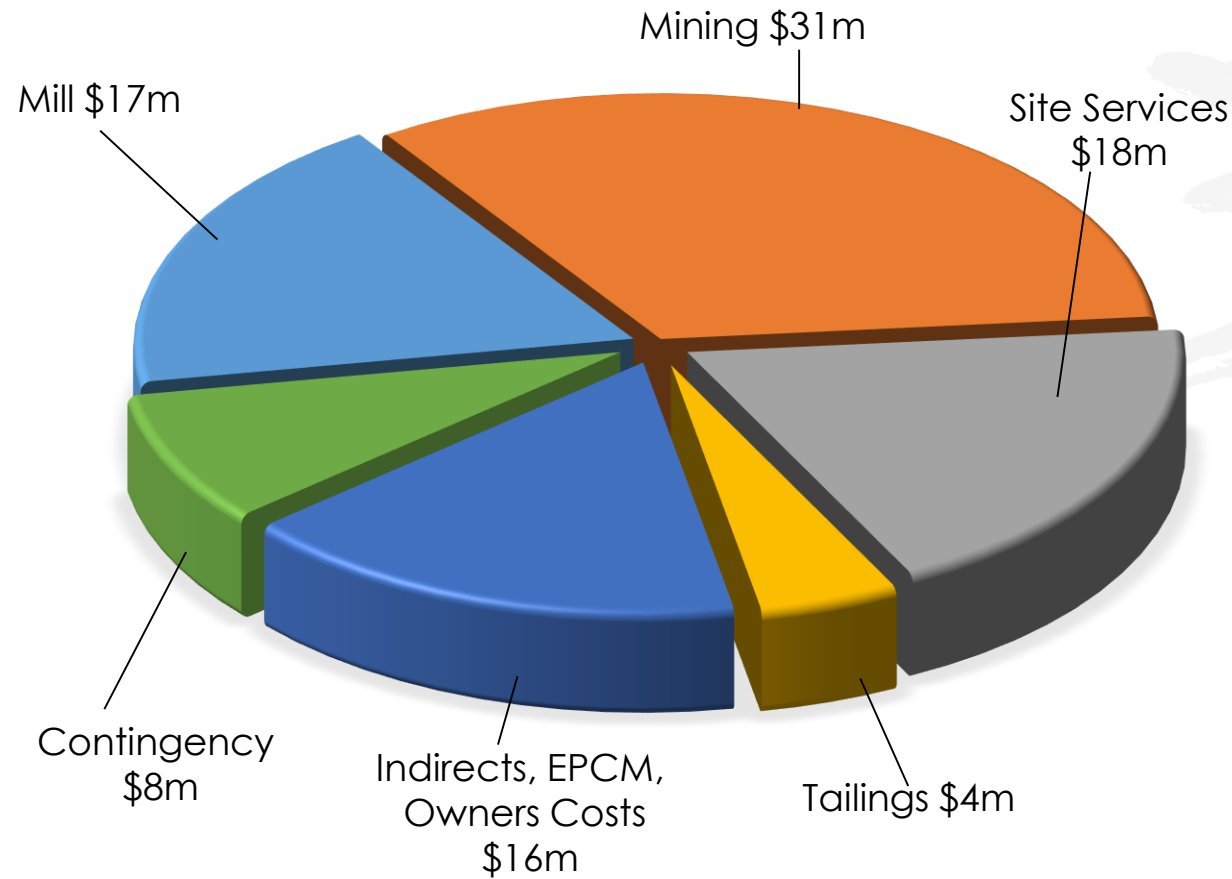
\$56m
 ANNUAL AFTER-TAX CASH FLOW
 YEARS 3 - 7

\$537m
 CUMULATIVE PRE-TAX CASH FLOW ¹



(1) See the technical report titled "Madsen Gold Project Technical Report Feasibility Study for the Madsen, Red Lake, Ontario Canada" effective February 5, 2019, dated July 5, 2019 for further information, available at www.puregoldmining.ca or under the Company's Sedar profile at www.sedar.com

INITIAL CAPITAL (C\$95m)



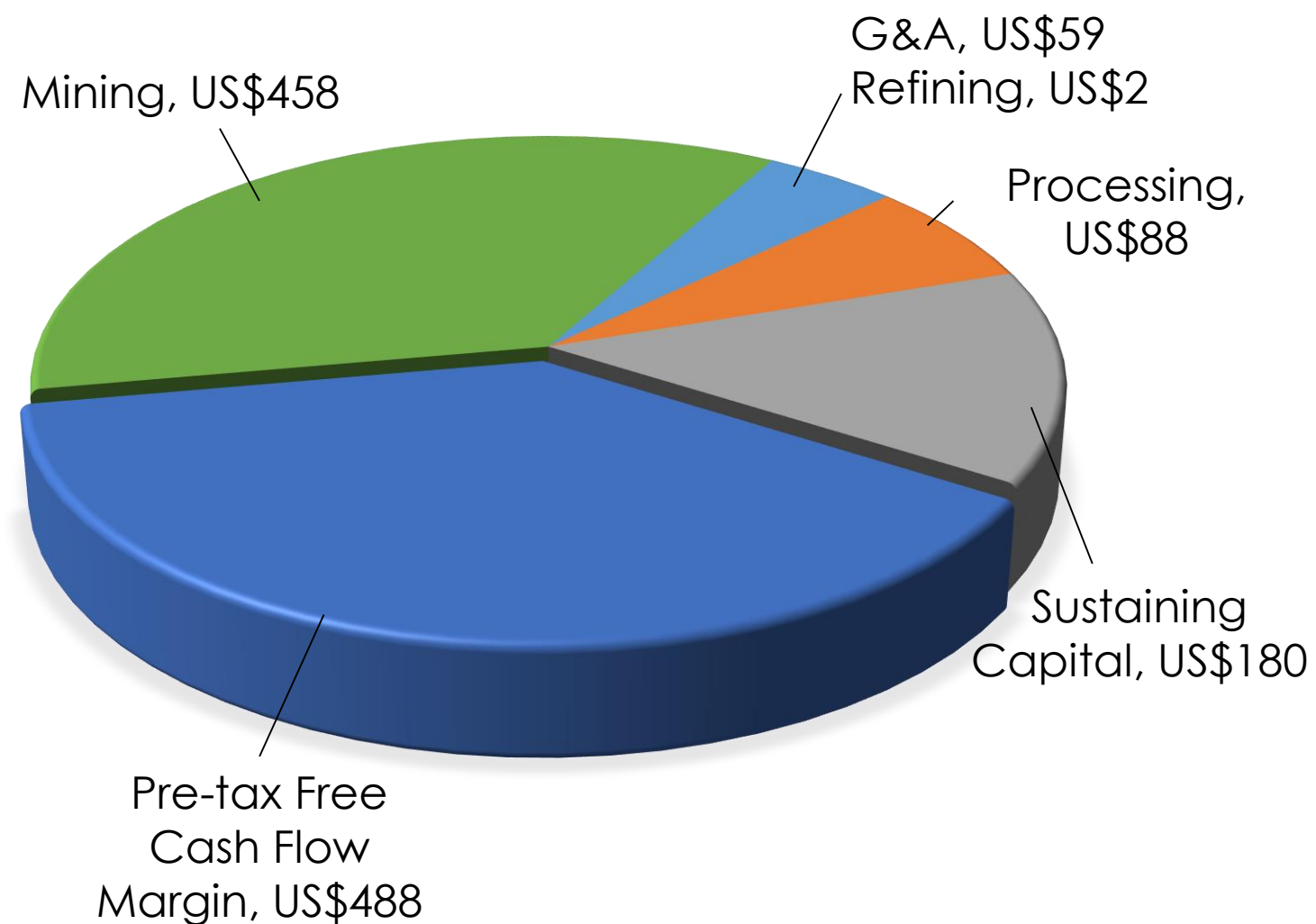
LOW CAPITAL HURDLE¹

Total Initial Capital (C\$m) 95
Sustaining Capital (C\$m) 232

	INITIAL (C\$m)	SUSTAINING (C\$m)	LOM (C\$m)
Mining	31	209	240
Site Development	1	0	1
Processing	17	0	17
Tailings	4	8	12
Site Services	18	1	16
Closure (net salvage)	0	12	12
Indirects	6	0	6
EPCM	7	0	7
Owners Costs	3	0	3
Subtotal	87	230	317
Contingency	8	2	10
Total	95	232	327

(1) See the technical report titled "Madsen Gold Project Technical Report Feasibility Study for the Madsen, Red Lake, Ontario Canada" effective February 5, 2019, dated July 5, 2019 for further information, available at www.puregoldmining.ca or under the Company's Sedar profile at www.sedar.com

38% NET FCF MARGIN (PRE-TAX) @ US\$1,275/oz¹



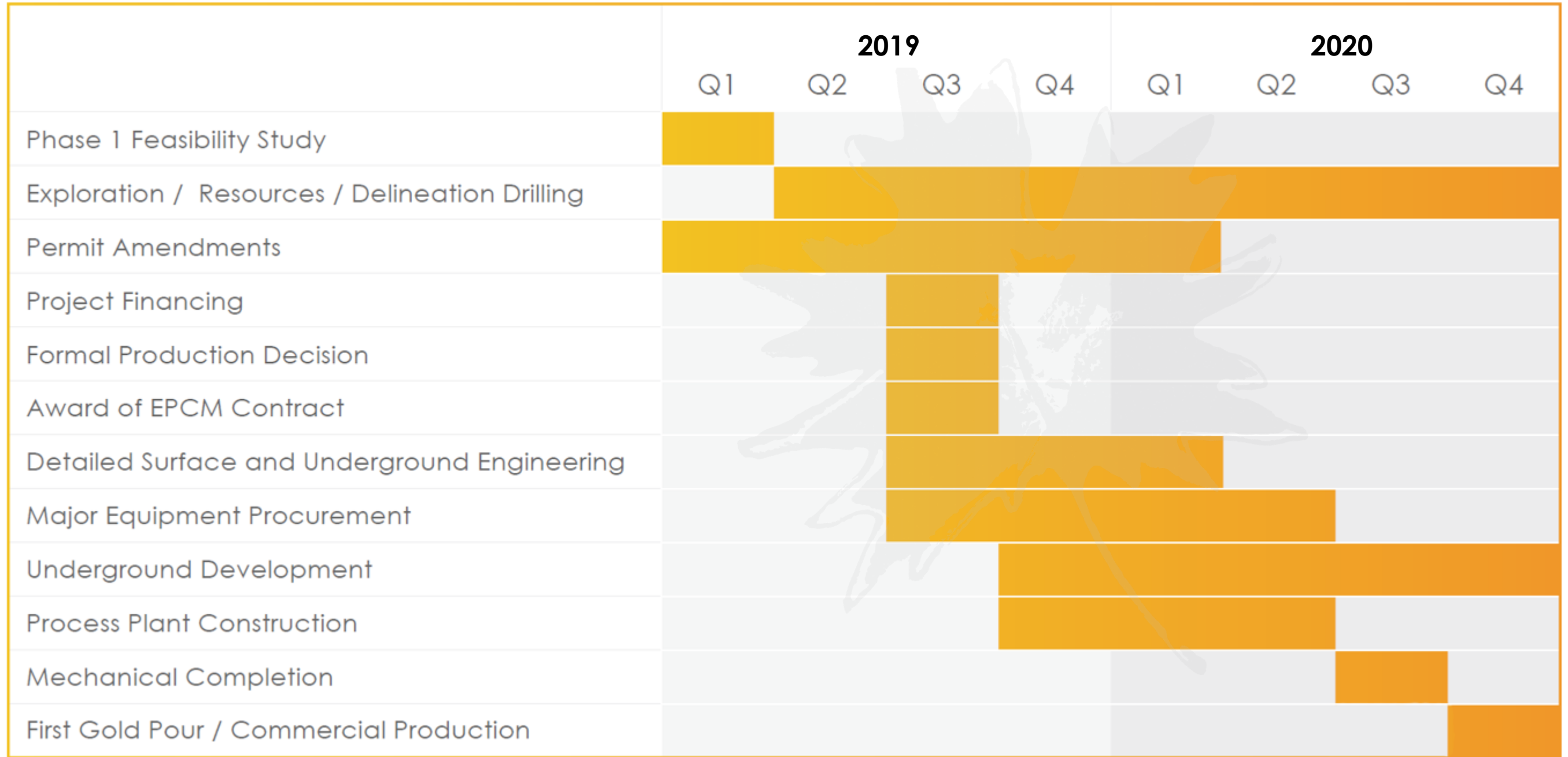
LOW COST PROFILE

Total Cash Cost (US\$/oz)² 607
 All-in Sustaining Cash Cost (US\$/oz)² 787

	LOM (C\$/t)	LOM (US\$/oz)
Mining	169	458
Processing	32	88
G&A	22	59
Total Direct Operating Cost	223	605
Refining, transport	1	2
Cash Cost	224	607
Sustaining Capital	66	180
All-in Sustaining Cost	290	787

(1) See the technical report titled "Madsen Gold Project Technical Report Feasibility Study for the Madsen, Red Lake, Ontario Canada" effective February 5, 2019, dated July 5, 2019 for further information, available at www.puregoldmining.ca or under the Company's Sedar profile at www.sedar.com

(2) This is a non-GAAP performance measure. See "Non-GAAP" Measures and other Financial Measures cautionary language. US\$ except as noted C\$. C\$ to US\$ exchange rate of 0.75





RED LAKE IS IN OUR DNA

OUR TEAM HAS:

EXTENSIVE EXPERIENCE IN THE RED LAKE DISTRICT

BUILT OVER 20 MINES GLOBALLY

OPERATED OVER 50 MINES GLOBALLY

Darin Labrenz, President, CEO & Director

- Registered Professional Geologist with over 25 years of experience
- Terrane Metals Corp. – VP of Business Development until Terrane's acquisition by Thompson Creek Metals in 2010.
- Placer Dome - Design and supervision of exploration programs, management of geological activities at both underground and open pit mining operations, technical support and geological management of several feasibility studies and economic evaluations.
- Campbell-Red Lake Mine – Chief Geologist

Sean Tetzlaff, CFO & Corporate Secretary

- Over 20 years of experience in corporate finance, tax, mergers and acquisitions, joint ventures and financial reporting in the mining industry.
- Fronteer Gold - CFO, VP Finance and Corporate Secretary through sale of Fronteer to Newmont for \$2.3 billion in 2011.
- Aurora Energy - CFO
- Oxygen Capital – Co-Founder and Partner

Ken Donner, Vice President, Operations

- Registered professional engineer with over 30 years of experience in the development, construction and operation of mines around the world, specializing in high grade deposits.
- AMEC – Construction Manager on Newmont's Leeville #3 Vent Shaft project.
- Homestake, Oceana Gold, Bema Gold

Phil Smerchanski, Vice President, Exploration

- Registered professional geologist with 18 years of exploration experience.
- Goldcorp - Technical advisor in Red Lake, on their high-grade generative exploration team, including targeting at the new HG Young discovery.
- Anglo American, Revelation Geoscience, Falconbridge, Inco

Christopher Lee, Chief Geoscientist

- Registered professional geologist with over 25 years of experience in mineral exploration and resource evaluation. Specializes in structural analysis of ore deposits for application to grade control, resource estimation and generation of predictive exploration models.
- Fronteer Gold - Qualified Person responsible for resource modeling, estimation and growth of over 14 million ounces of gold in mining assets located in Burkina Faso, Turkey and Nevada.
- Aurora Energy, True Gold, SRK

Graeme Currie, Chairman

- Canaccord Genuity - Director, Investment Banking at Canaccord Genuity Limited. Canaccord Senior Mining Analyst for 22 years.
- Over three decades of industry experience directed specifically on junior exploration and development companies.

Mark O'Dea, Director

- Fronteer - Co-founder and CEO of Fronteer Gold. Sold to Newmont Mining Corp. for \$2.3 billion in 2011.
- True Gold - Co-founder and Executive Chairman of True Gold Mining. Sold to Endeavour Mining in 2016.
- Co-founder and Chairman of True North Nickel and CEO of Aurora Energy, sold to RNC Minerals and Paladin Energy in 2014 and 2011, respectively.
- Oxygen Capital Corp. – Chairman and Founder

Rob Pease, Director

- Terrane – Formed Terrane Metals Corp. to develop the Mt Milligan Gold-Copper project. Terrane was acquired by Thompson Creek Mining in late 2010 for \$700 million.
- Richfield - Former Director and Strategic Advisor to Richfield Ventures Corp., who discovered the Blackwater gold project in British Columbia. Acquired in 2011 by New Gold Inc for \$500 million.
- Prior to becoming President and CEO of Terrane, Mr. Pease was with Placer Dome group for most of his professional career.

Troy Fierro, Director

- Mr. Fierro is a mining engineer with over 30 years of industry experience.
- Fronteer – COO of Fronteer until 2011 sale to Newmont Mining Corp. for \$2.3 billion.
- Metallica - Vice President Operations where he played the lead role in the construction of the Cerro San Pedro Mine in Mexico.

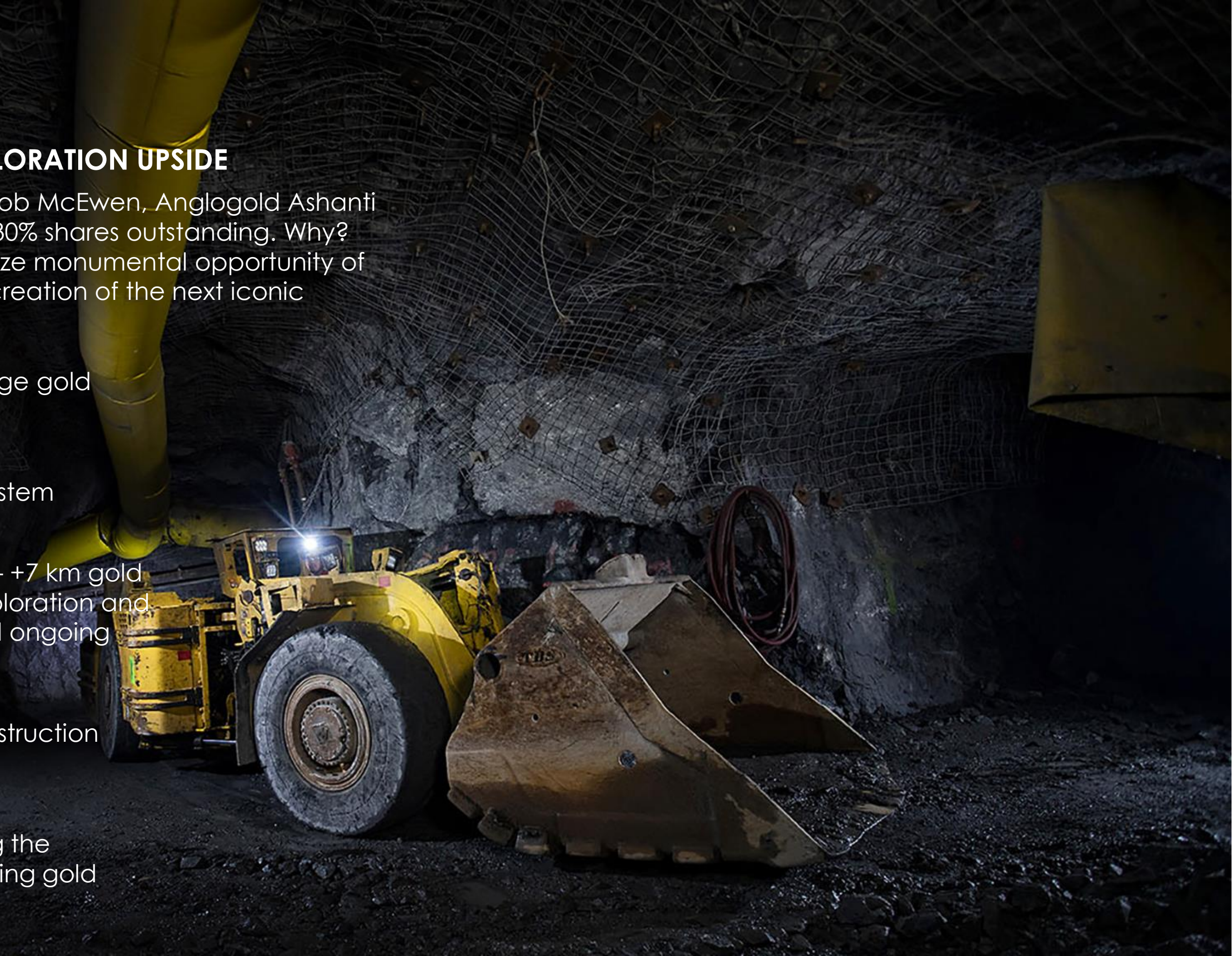
Len Boggio, Director

- PricewaterhouseCoopers – Mr. Boggio was a Partner at PWC for 24 years.
- He was Leader of the B.C. Mining Group of PwC, a senior member of PwC's Global Mining Industry Practice and an audit practitioner for publicly listed Canadian, U.S. and U.K. mineral resource and energy clients.



NEAR TERM PRODUCTION / EXPLORATION UPSIDE

- Follow the Leaders. Eric Sprott, Rob McEwen, AngloGold Ashanti and Newmont Goldcorp own >30% shares outstanding. Why? These strategic investors recognize monumental opportunity of transformative growth and the creation of the next iconic Canadian gold producer
- Highest-grade development-stage gold deposit in Canada
- Proven large high-grade gold system
- Fully funded Exploration upside – +7 km gold system open in all directions. Exploration and expansion drilling underway and ongoing
- Fully funded 13 month mine construction
First Production late 2020
- Perfect timing. We are delivering the Madsen Red Lake Mine into a rising gold market that is rising every day.





TSX-V:PGM
LSE:PUR



Corporate Inquiries:

Darin Labrenz
President & CEO
t: 604.646.8000
info@puregoldmining.ca

Corporate Address:

1900 – 1055 West Hastings Street
Vancouver, BC V6E 2E9
www.puregoldmining.ca

CAPITAL STRUCTURE

Shares Outstanding	358.5 million
Warrants Exercise price \$0.85, May 24, 2020 expiry	14.5 million
Warrants Exercise price \$0.85, July 18, 2022 expiry	43.2 million
Options Outstanding Weighted average exercise price \$0.41	14.9 million
Fully Diluted Shares Outstanding	426 million
Basic Market Capitalization ⁽¹⁾	~\$208 million
Cash	\$83.5 million
Debt	\$13.2 million

KEY SHAREHOLDERS ²

Management & Directors	~4%
Strategic Shareholders -AngloGold Ashanti -Eric Sprott -Rob McEwen -Newmont Goldcorp	~30%
Institutional Shareholders ⁽²⁾	~16%

⁽¹⁾ Basic Market Capitalization as at October 17, 2019
⁽²⁾ Percentage ownership based on basic shares outstanding; ownership information based on public disclosure
 Note: all \$ amounts shown are in Canadian currency

ANALYST COVERAGE

	Mick Carew 604.697.6006
	Brock Salier +44.207.659.0841
	Kevin MacKenzie 604.643.7357
	Ryan Walker 416.479.8997
	Stuart McDougall 416.860.8636
	Peter Mallin-Jones +44 (0)20 3597 8644
	David Butler +44 203 882 8422



MADSEN RED LAKE MINE MINERAL RESOURCES¹

Indicated

Deposit	Tonnes (kt)	Grade (g/t Au)	Contained Gold (koz)
Madsen	6,429	9.0	1,857
Fork	203	6.6	43
Russet South	241	7.2	56
Wedge	322	10.3	107
Total	7,196	8.9	2,063

Inferred

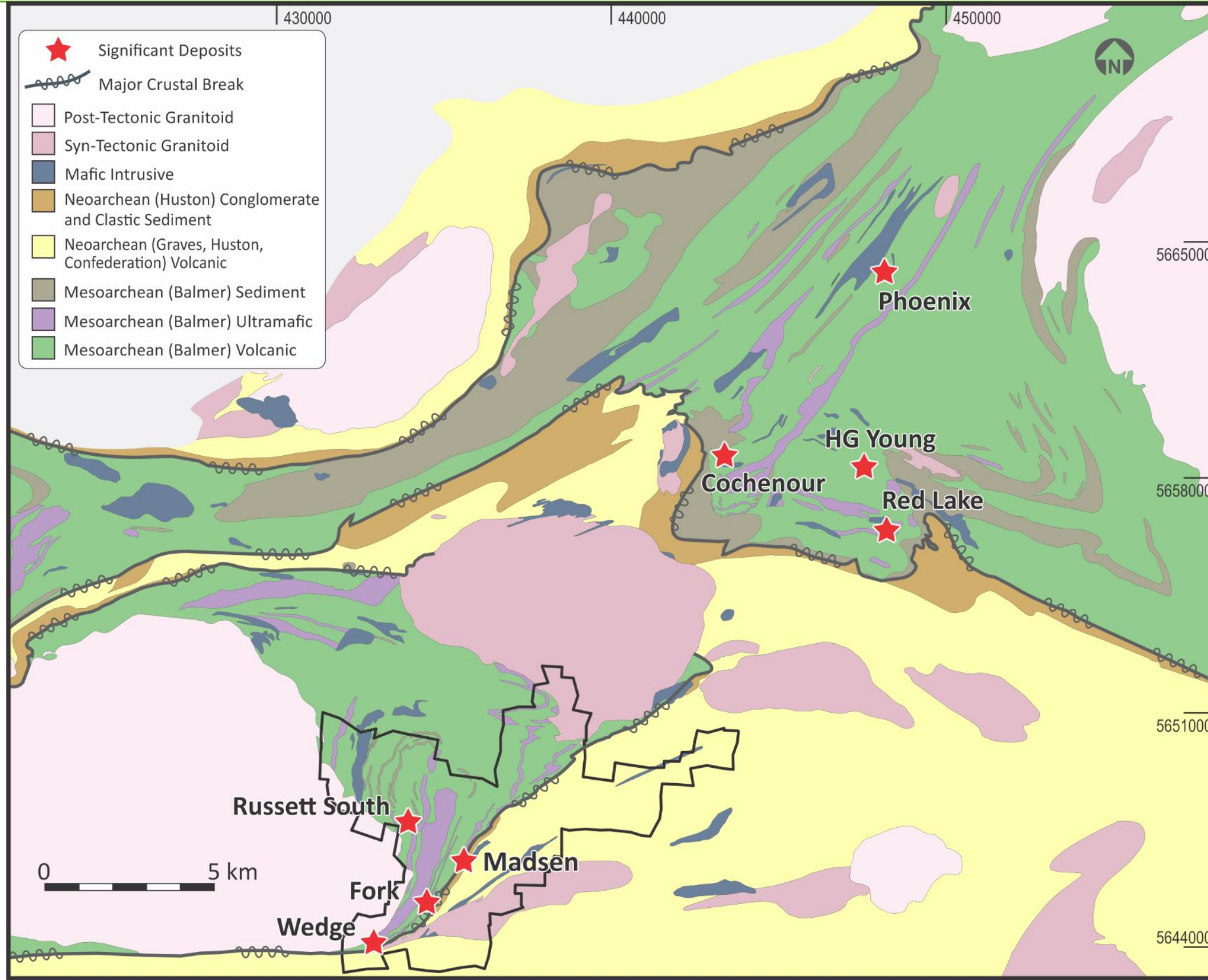
Deposit	Tonnes (kt)	Grade (g/t Au)	Contained Gold (koz)
Madsen	889	8.4	241
Fork	331	5.8	61
Russet South	352	7.5	85
Wedge	307	8.0	79
Total	1,880	7.7	467

MINERAL RESERVES¹

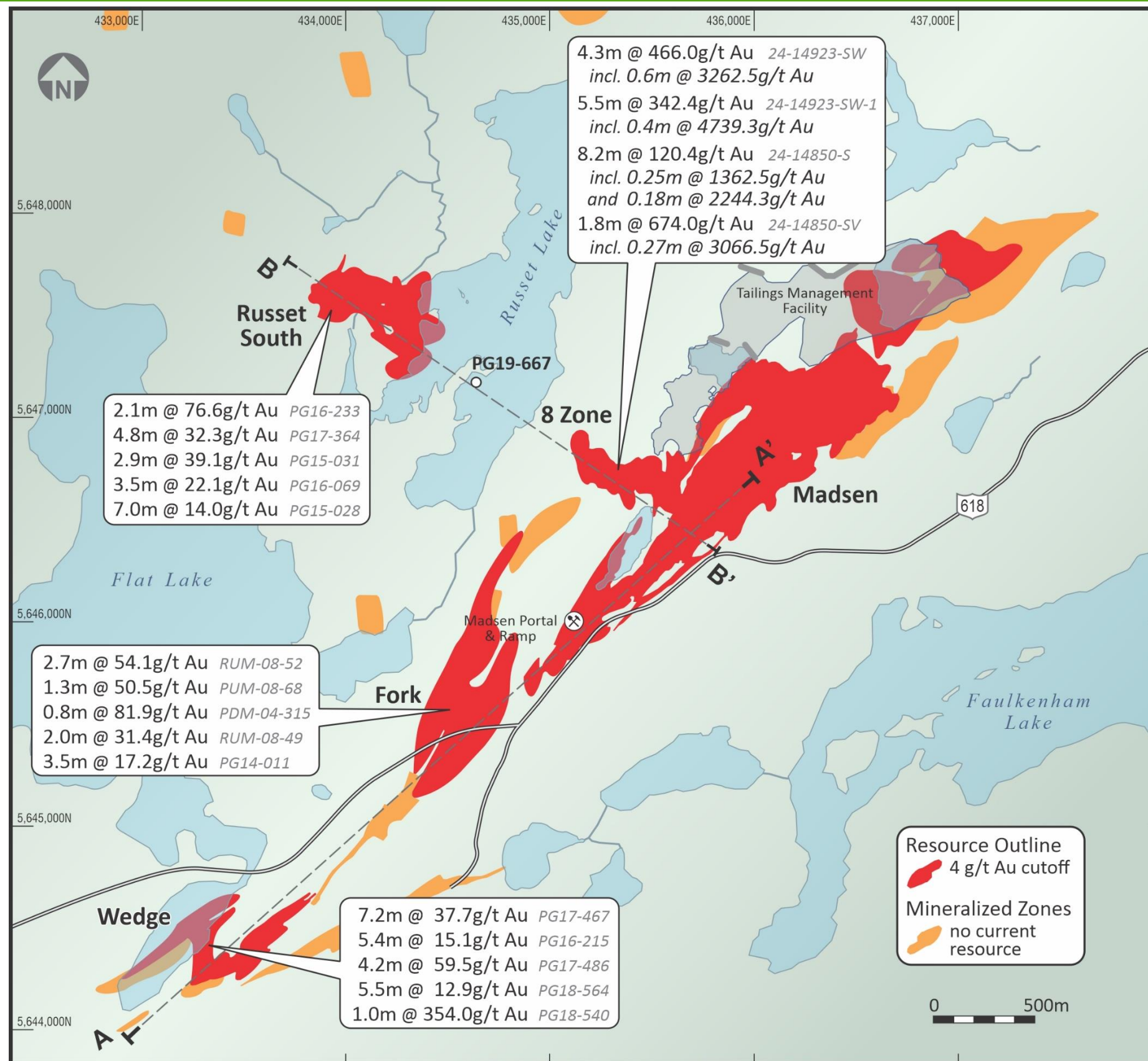
Probable

Deposit	Tonnes (kt)	Grade (g/t Au)	Contained Gold (koz)
Madsen	3,512	9.0	1,013
Total	3,512	9.0	1,013

(1) Mineral resources are inclusive of Mineral Reserves and are reported with an effective date of February 5, 2019. Mineral Resources that are not included in the Mineral Reserves do not have demonstrated economic viability. Mineral Reserves are reported using a 4.75 g/t gold cutoff excepting a 4.00 g/t cut-off for the McVeigh Zone. Mineral Resources are estimated using \$1,275/oz and a 95% recovery and are reported at a 4.0 g/t gold cut-off. See technical report titled "Madsen Gold Project Technical Report Feasibility Study for the Madsen, Red Lake, Ontario Canada" effective February 5, 2019, dated July 5, 2019 for further information, available at www.puregoldmining.ca or under the Company's Sedar profile at www.sedar.com



Madsen Red Lake Mine MINERALIZED ZONES WITH SELECT DRILL HOLE INTERCEPTS



Drill hole results from Russet South, Fork, Wedge and 8Zone are select highlights from each zone. Historic drill hole results listed from the 8Zone were completed prior to the implementation of National Instrument 43-101. A full discussion and cautionary language regarding historic sampling practices can be found in the NI43-101 technical report titled "Madsen Gold Project Technical Report Feasibility Study for the Madsen Deposit Red Lake, Ontario, Canada" with an effective date of February 5, 2019, and dated July 5, 2019 (the "Feasibility Study").

