

METALS FOR THE CLEAN AIR REVOLUTION



THUNDER BAY NORTH PROJECT

NOVEMBER 2021

TSXV AIR OTCQB CLRMF FRA CKU | CLEANAIRMETALS.CA

FORWARD LOOKING STATEMENTS

Information set forth in this presentation may contain forward-looking statements. Forward-looking statements are statements that relate to future, not past events. In this context, forward-looking statements often address a company's expected future business and financial performance, and often contain words such as "anticipate", "believe", "plan", "estimate", "expect", and "intend", statements that an action or event "may", "might", "could", "should", or "will" be taken or occur, or other similar expressions. By their nature, forward-looking statements involve known and unknown risks, uncertainties and other factors which may cause our actual results, performance or achievements, or other future events, to be materially different from any future results, performance or achievements expressed or implied by such forward-looking statements. Such factors include, among others, risks associated with project development; the need for additional financing; operational risks associated with mining and mineral processing; fluctuations in commodity prices; title matters; environmental liability claims and insurance; reliance on key personnel; the absence of dividends; competition; dilution; the volatility of our common share price and volume; and tax consequences to U.S. Shareholders. Forward-looking statements are made based on management's beliefs, estimates and opinions on the date that statements are made and the Company undertakes no obligation to update forward-looking statements if these beliefs, estimates and opinions or other circumstances should change. Investors are cautioned against attributing undue certainty to forward-looking statements.

Abraham Drost, P.Geo. a Qualified Person under NI 43-101, has reviewed and approved dissemination of the technical content herein.



JIM GALLAGHER, P.ENG EXECUTIVE CHAIR



Most recently the CEO of North American Palladium (TSX:PDL), which operated the Lac Des Iles mine, at the sale to Impala Platinum Holdings (JSE:IMP) in December 2019 for approximately \$1 Billion.

ABRAHAM DROST, P.GEO CEO/DIRECTOR



Most recently CEO and Director of Carlisle Goldfields Ltd. (CGJ:TSX) at the sale to Alamos Gold (AGI:TSX). Former Chairman of Premier Gold Mines USA Inc. and the former CEO and founding Director of Premier Royalty Inc. (NSR:TSX) at the sale to Sandstorm Gold (SSL:TSX).



CAPITAL STRUCTURE

Oct 31, 2021

Shares Issued	167,268,994
Warrants (\$0.30/sh.) Feb 11/22	34,737,735
Warrants (\$0.55/sh.) Feb 22/23	6,372,550
Cash	\$6.5M

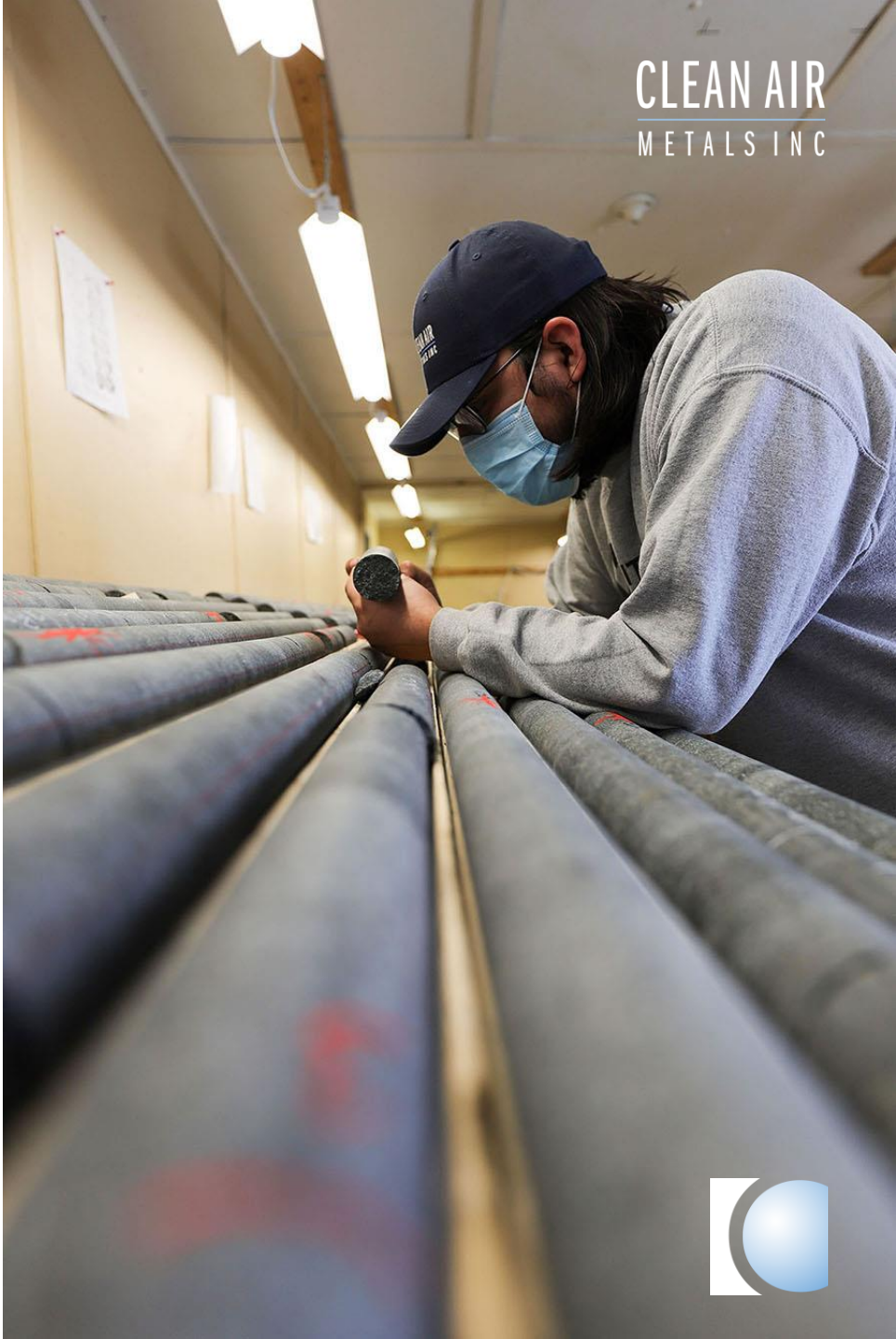
Management – **5.3%**

Benton Resources (BEX: TSXV) – **14.7%**

Institutional – **40% ~**

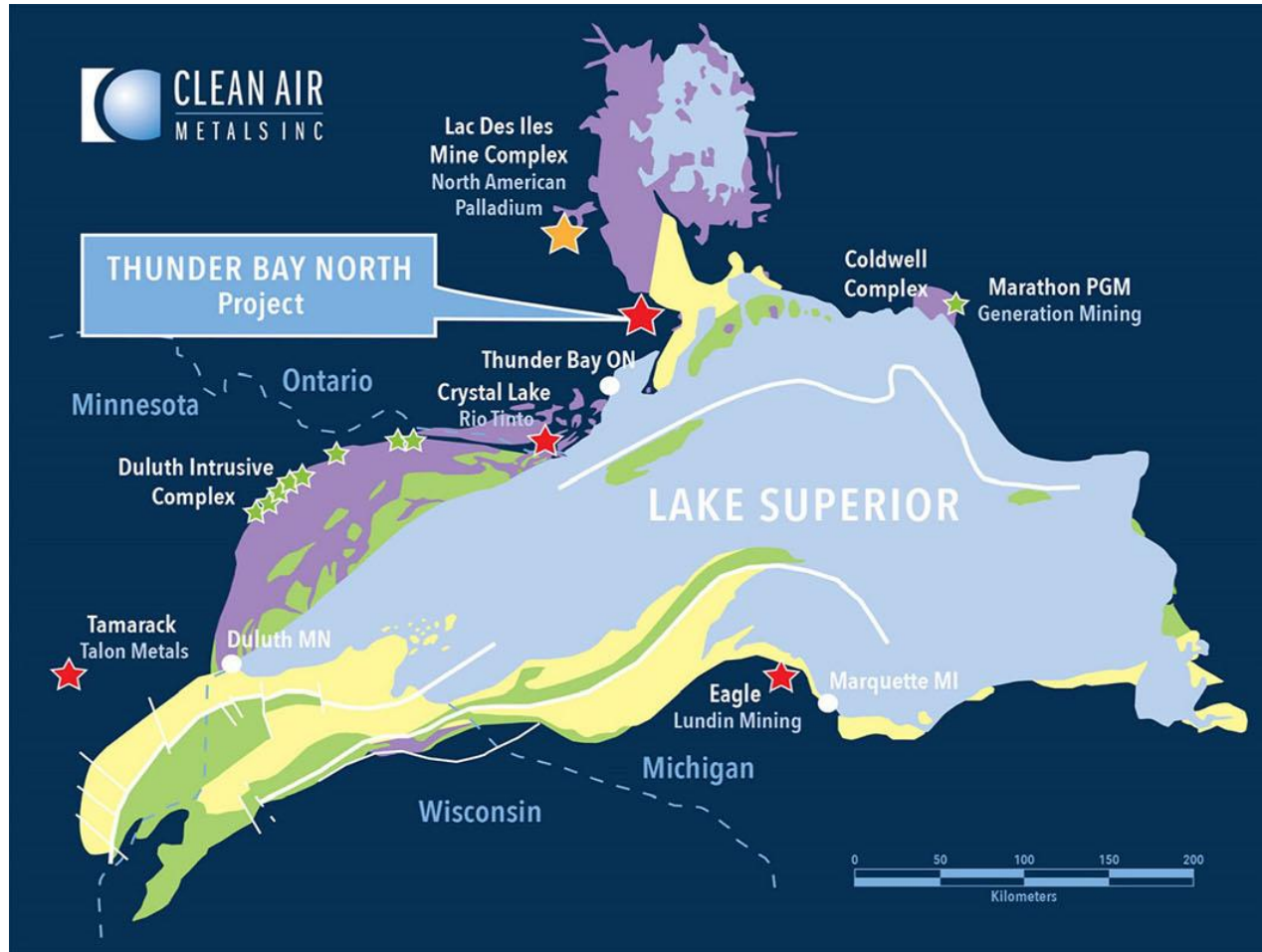
Clean Air Metals Inc. is well positioned to fund its 2021-22 exploration program which includes:

1. Escape Deposit: a multi-drill expansion program leading to a resource update
2. Current Deposit: Bulk sample metallurgy; Infill drilling; PEA Q4
3. Massive Sulphides: targeting potential massive sulphide geophysical anomalies



THUNDER BAY NORTH PROJECT LOCATION

MID-CONTINENT RIFT METALLOTECT



Mid-continent rift system Ni-Cu-PGE deposits

- ★ High grade conduit-hosted Ni-Cu-PGE sulphides
- ★ Low grade Cu-PGE-Ni sulphides associated with intrusive complex

Archean PGE deposit

- ★ High grade PGE magmatic deposit

Mid-Continent Rift System Simplified Geology

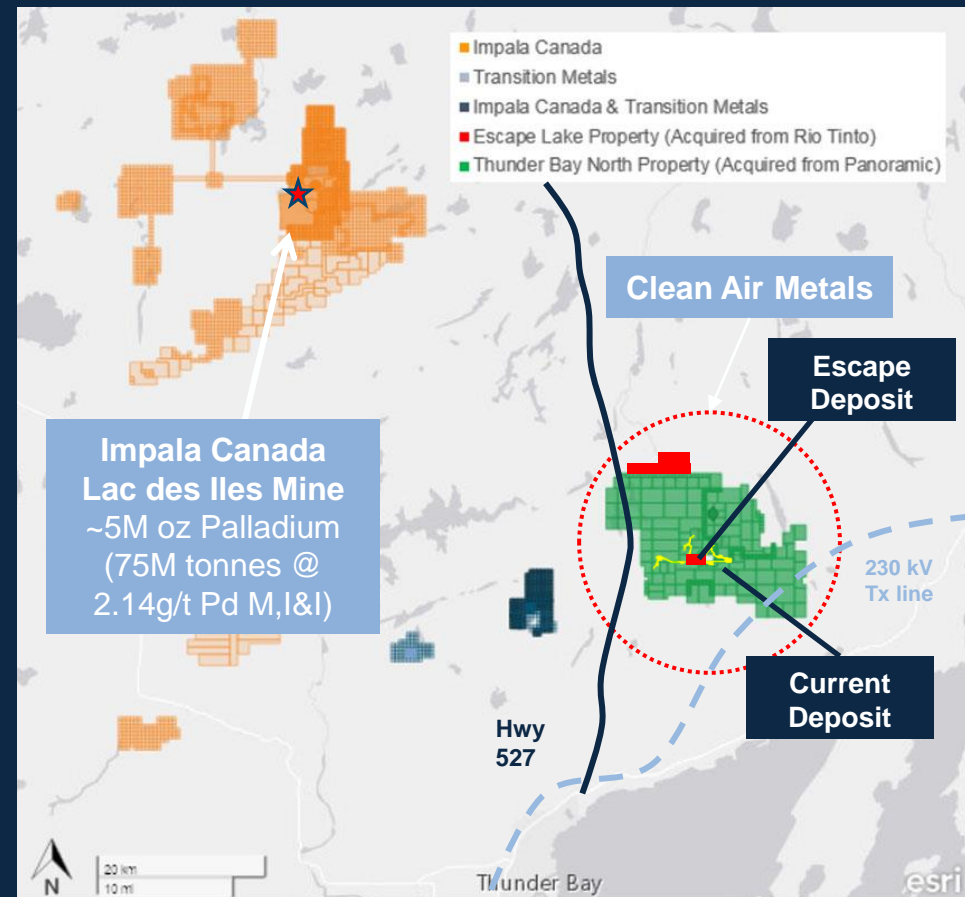
- Intrusive Rocks
- Volcanic Rocks
- Sedimentary Rocks
- Major Fault
- Minor Fault



THUNDER BAY NORTH PROJECT CONSOLIDATION

Historic Opportunity

- Well known PGE-Nickel-Copper District with several operating mines including the Lac des Iles Mine owned by Impala Platinum Holdings (Impala Canada).
- Clean Air Metals has consolidated:
 - 1. Current Deposit**
 - Deposit defined by 167,500m of drilling in 647 holes
 - Indicated Resource of 1,328,788 ounces PdEq at 3.44 g/t PdEq
 - Inferred Resource of 416,810 ounces PdEq at 2.02 g/t PdEq
 - 2. Escape Deposit**
 - Indicated Resource of 505,369 ounces PdEq at 3.67 g/t PdEq
 - Inferred Resource of 246,850 ounces PdEq at 2.23 g/t PdEq
 - Open along strike



Source: S&P Global Market Intelligence



RESOURCE UPDATE NEWS RELEASE

AIR NEWS January 20th, 2021

Clean Air Metals Announces Mineral Resource for Thunder Bay North Project

Total Indicated Resource of 16,285,396 tonnes at an average grade of 3.5 g/t PdEq containing 1,834,158 ounces PdEq

Total Inferred Resource of 9,852,138 tonnes at an average grade of 2.1 g/t PdEq containing 663,660 ounces PdEq

See Full Press Release at cleanairmetals.ca

TSXV AIR
OTCQB CLRMF
FRA CKU



US\$77 CUTOFF GRADE
PRICE DECK

1.58g/t PdEq; 2.65g/t PtEq)

Commodity	Units	Assumption (USD\$)
Palladium	per oz	1516.82
Platinum	per oz	902.38
Silver	per oz	17.35
Gold	per oz	1469.60
Copper	per lbs	2.87
Nickel	per lbs	6.15
Cobalt	per tonne	34839.16
Rhodium	per oz	4910.67

NB. 3-year trailing metal pricing average except Cobalt, 2-year trailing average



43-101 RESOURCE UPDATE JANUARY 20, 2021

Thunder Bay North Project Grade Profile (at \$US77 Cutoff)

Category	Tonnes	Grade									
		Pt (g/t)	Pd (g/t)	Au (g/t)	Ag (g/t)	Rh (g/t)	Co (g/t)	Cu (%)	Ni (%)	Pt Eq (g/t)	Pd Eq (g/t)
Indicated – Current Lake	11,999,177	1.48	1.40	0.07	1.32	0.04	137	0.28	0.17	5.79	3.44
Indicated – Escape Lake	4,286,220	0.92	1.18	0.12	2.45	0.06	209	0.52	0.28	6.16	3.67
TOTAL INDICATED RESOURCE	16,285,396	1.33	1.34	0.08	1.62	0.05	156	0.34	0.20	5.89	3.50
Inferred – Current Lake	6,406,960	0.68	0.65	0.06	0.95	0.01	123	0.30	0.14	3.40	2.02
Inferred – Escape Lake	3,445,179	0.64	0.73	0.07	1.13	0.00	173	0.33	0.18	3.75	2.23
TOTAL INFERRED RESOURCE	9,852,138	0.67	0.68	0.07	1.01	0.01	140	0.31	0.15	3.52	2.10

Thunder Bay North Project Contained Metal (at \$US77 Cutoff)

Category	Tonnes	Metal									
		Pt (Oz)	Pd (Oz)	Au (Oz)	Ag (Oz)	Rh (Oz)	Co (Tonnes)	Cu (Tonnes)	Ni (Tonnes)	Pt Eq (Oz)	Pd Eq (Oz)
Indicated – Current Lake	11,999,177	569,176	538,181	26,121	508,434	16,998	1,649	33,751	20,969	2,233,575	1,328,789
Indicated – Escape Lake	4,286,220	127,090	162,337	16,928	337,946	8,009	896	22,390	12,016	849,481	505,369
TOTAL INDICATED RESOURCE	16,285,396	696,266	700,517	43,050	846,380	25,008	2,544	56,141	32,985	3,083,056	1,834,158
Inferred – Current Lake	6,406,960	140,400	133,333	12,888	195,484	1,836	785	19,155	9,113	700,621	416,810
Inferred – Escape Lake	3,445,179	70,520	80,989	7,754	124,809	71	595	11,293	6,046	414,932	246,850
TOTAL INFERRED RESOURCE	9,852,138	210,919	214,322	20,642	320,293	1,907	1,380	30,449	15,159	1,115,553	663,660



METALLURGY BLUE COAST RESEARCH

COPPER CONCENTRATE



BULK S CONCENTRATE



DEMONSTRATING SOCIAL RESPONSIBILITY

AIR NEWS December 15th, 2020

**Clean Air Metals
Announces Release
of Equity, Diversity
and Inclusion Policy**

See Full Press Release at cleanairmetals.ca

TSXV AIR
OTC CLRMF
FRA CKU



AIR NEWS January 11th, 2021

**Clean Air Metals and
First Nation Partners Agree
to Cooperate on Exploration
and Development at the
Thunder Bay North Project**

See Full Press Release at cleanairmetals.ca

TSXV AIR
OTC CLRMF
FRA CKU



THUNDER BAY NORTH PROJECT

LOW CARBON FOOTPRINT MINE
BASED ON GREEN POWER AVAILABILITY



THUNDER BAY NORTH INTRUSIVE COMPLEX 2020-21 EXPLORATION STRATEGY

1. Current Deposit

- NI 43-101 resource update completed in January, 2021
- Complete bulk sample metallurgy
- Infill drilling

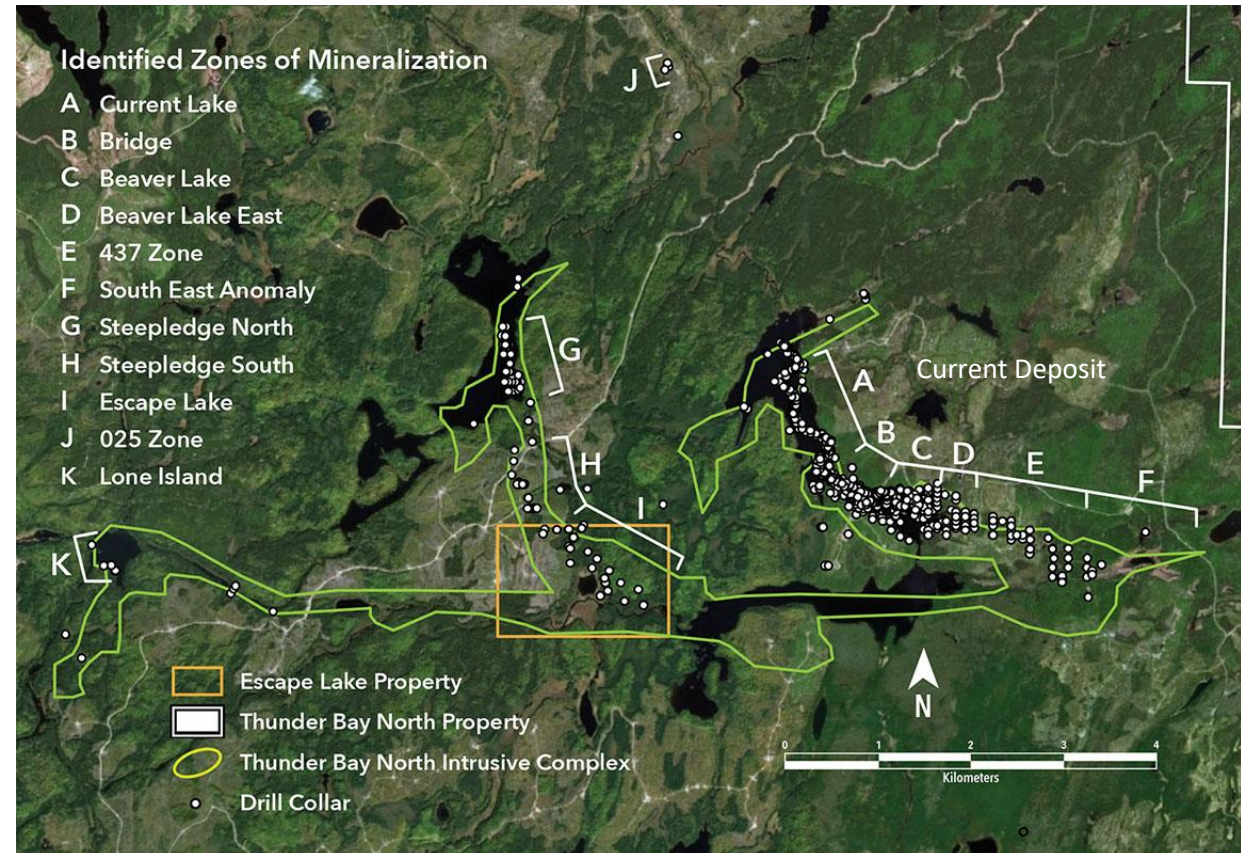
2. Escape Deposit

- NI 43-101 resource update in completed January, 2021
- Delineation drill program to link resource areas

GREENFIELDS EXPLORATION

3. Massive Sulphide Targets

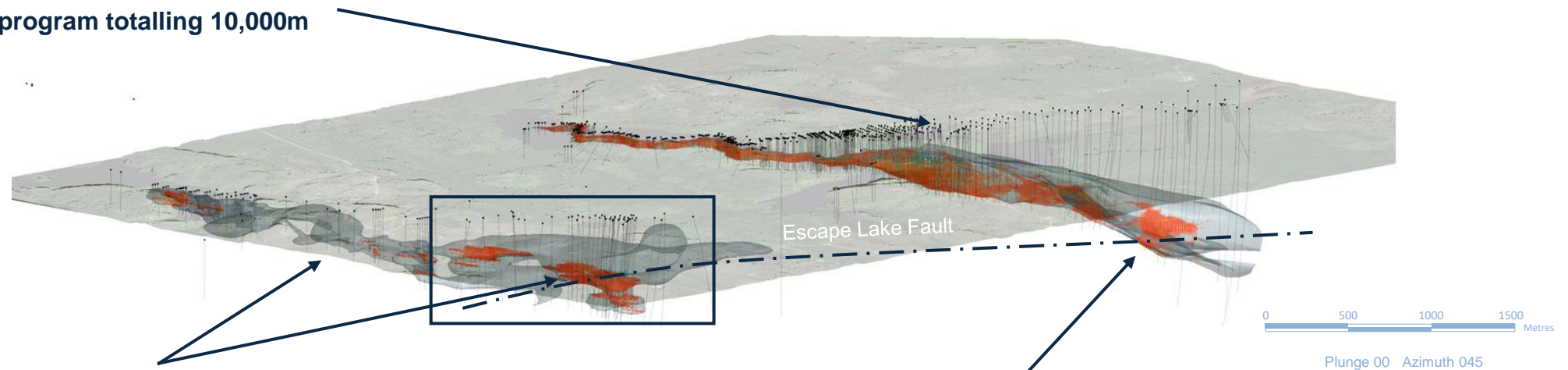
- Initiate greenfields drill program to target Norilsk-style multi-ounce massive sulphide PGE-Ni-Cu mineralization in the conduit source feeder systems.



THUNDER BAY NORTH 3D OBLIQUE VIEW OF CURRENT & ESCAPE TWIN CONDUITS

Current Deposit

- Indicated Resource of 11,999,177 tonnes at 3.44 PdEq (g/t) containing 1,328,789 ounces PdEq
- Inferred Resource of 6,406,960 tonnes at 2.02 PdEq (g/t) containing 416,810 ounces PdEq
- **2021 drill program totalling 10,000m**



Escape Deposit & High Grade Zone (Open)

- Indicated Resource of 4,286,220 tonnes at 3.67 PdEq (g/t) containing 505,369 ounces PdEq
- Inferred Resource of 3,445,179 tonnes at 2.23 PdEq (g/t) containing 246,850 ounces PdEq
- **2021 drill program totalling 30,000m**

Feeder Zone

- **Massive sulphide drill targets**

*Drill-Indicated lithological shells



CURRENT DEPOSIT

PEER LEADING TOP 12 DRILL HOLES (BACK TO THE DISCOVERY MOMENT...)

Drill Hole Number	From (m) Primary	To (m) Primary	Total Width (m)	Pt (g/t)	Pd (g/t)	Cu (%)	Ni (%)	Pt + Pd (g/t)	Pt:Pd Ratio	Cu:Ni Ratio	Pd Eq. (g/t)
BL10-326	85.10	136.10	51.00	5.02	4.84	1.18	0.56	9.86	1.04	2.11	11.81
including	100.50	136.10	35.60	6.69	6.42	1.55	0.71	13.11	1.04	2.17	
including	127.00	136.10	9.10	11.32	10.59	2.73	1.24	21.90	1.07	2.21	
BL10-197	177.00	190.00	14.00	16.23	13.92	3.75	1.31	30.15	1.17	2.87	32.91
including	187.40	190.00	2.60	52.77	41.54	11.60	3.29	94.31	1.27	3.53	
TBND233	34.40	88.05	53.65	3.86	3.72	0.92	0.51	7.58	1.04	1.81	10.82
including	63.00	83.00	20.00	6.82	6.49	1.57	0.86	13.31	1.05	1.82	
TBND193	34.00	85.80	51.80	3.51	3.28	0.79	0.38	6.79	1.07	2.08	7.81
including	35.00	54.00	18.00	5.90	5.57	1.26	0.53	11.47	1.06	2.36	
including	51.00	53.00	2.00	12.25	11.03	2.20	0.48	23.28	1.11	4.60	
TBND061	46.00	89.00	43.00	3.99	3.80	0.92	0.51	7.78	1.05	1.80	9.06
including	49.00	79.00	18.00	4.58	4.39	1.03	0.57	8.97	1.04	1.82	
TBND097	46.00	91.80	48.50	3.63	3.37	0.88	0.39	7.00	1.08	2.26	8.01
including	70.90	77.10	6.20	7.98	7.12	1.86	0.53	15.09	1.12	3.53	
TBND171	24.55	65.00	40.45	3.64	3.48	0.84	0.41	7.13	1.05	2.08	8.25
including	24.55	39.00	14.45	4.86	4.77	1.12	0.50	9.63	1.02	2.25	
TBND092	21.56	63.65	42.09	3.39	3.16	0.78	0.40	6.54	1.07	1.93	7.58
including	34.30	37.00	2.70	5.64	5.33	1.17	0.47	10.97	1.06	2.47	
TBND172	21.65	57.00	35.35	3.16	2.98	0.71	0.36	6.14	1.06	2.00	7.90
including	40.00	47.00	7.00	6.87	6.39	1.46	0.71	13.26	1.07	2.07	



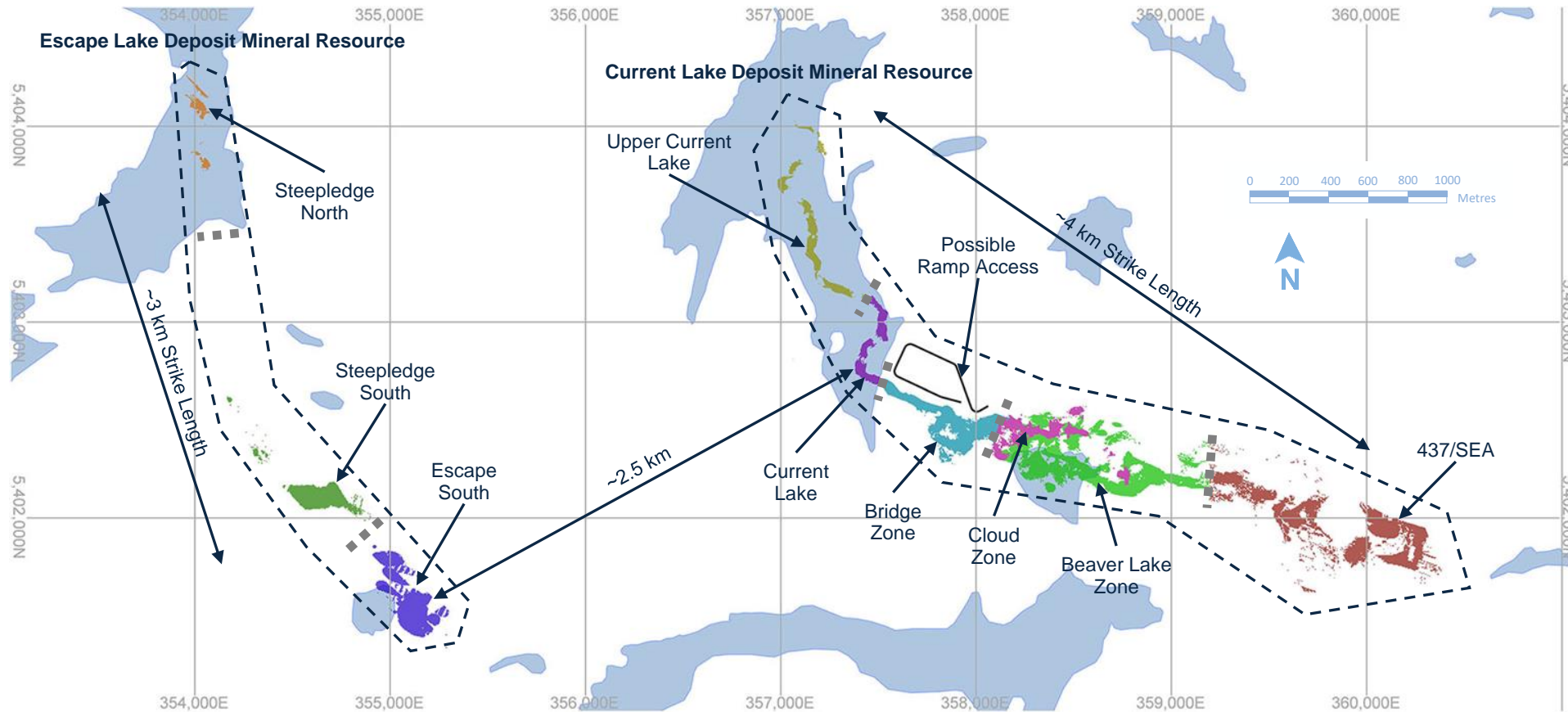
ESCAPE DEPOSIT TOP 12 DRILL HOLES 2020

Drill Hole Number	From (m) Primary	To (m) Primary	Total Width (m)	Pt (g/t)	Pd (g/t)	Cu (%)	Ni (%)	Pt + Pd (g/t)	Pt:Pd Ratio	Cu:Ni Ratio	Pd Eq. (g/t)
ELR20-025	324.40	423.25	98.85	1.40	1.89	0.69	0.35	3.29	0.74	1.94	4.92
including	392.54	411.76	19.22	2.90	4.09	1.42	0.75	6.99	0.71	1.88	
ELR20-003	359.45	438.37	78.92	1.66	2.17	0.80	0.41	3.84	0.76	1.96	5.68
including	395.45	415.45	20.00	3.39	4.67	1.54	0.84	8.06	0.73	1.85	
including	403.45	408.45	5.00	5.07	6.44	2.15	0.88	11.51	0.79	2.45	
ELR20-028	350.80	434.10	83.30	1.47	1.91	0.73	0.41	3.38	0.77	1.77	5.20
including	398.10	419.80	21.70	3.70	3.49	1.40	0.89	7.18	1.06	1.57	
ELR20-004	391.58	424.50	32.92	3.16	4.33	1.55	0.81	7.49	0.73	1.91	10.99
including	399.58	403.50	3.92	5.10	7.08	2.45	1.27	12.19	0.72	1.93	
ELR20-005	386.70	424.70	38.00	1.82	2.46	0.92	0.63	4.28	0.74	1.47	6.91
including	391.70	410.70	19.00	2.62	3.68	1.40	1.00	6.31	0.71	1.40	
ELR20-002	386.15	416.15	30.00	2.07	2.69	0.96	0.49	4.76	0.77	1.97	6.94
including	391.15	402.15	11.00	3.23	4.27	1.52	0.78	7.50	0.76	1.96	
including	399.15	401.15	2.00	5.02	6.16	2.34	0.59	11.18	0.82	3.96	
ELR20-032	379.00	414.07	35.07	1.64	2.23	0.80	0.41	3.87	0.73	1.94	6.11
including	395.14	405.07	9.93	2.72	3.77	1.29	0.66	6.50	0.72	1.95	
ELR20-007	388.50	421.00	32.50	1.69	2.16	0.75	0.35	3.85	0.78	2.18	5.46
including	396.50	406.50	10.00	2.62	3.31	1.09	0.47	5.93	0.79	2.29	
ELR20-022	386.45	410.00	23.55	2.18	2.82	0.96	0.50	5.00	0.77	1.91	7.20
including	392.20	401.75	9.55	3.05	3.93	1.31	0.67	6.99	0.78	1.97	
ELR20-020	391.74	411.74	20.00	2.02	2.62	0.88	0.45	4.64	0.77	1.95	6.62
including	392.74	398.74	6.00	2.65	3.72	1.25	0.87	6.37	0.71	1.44	



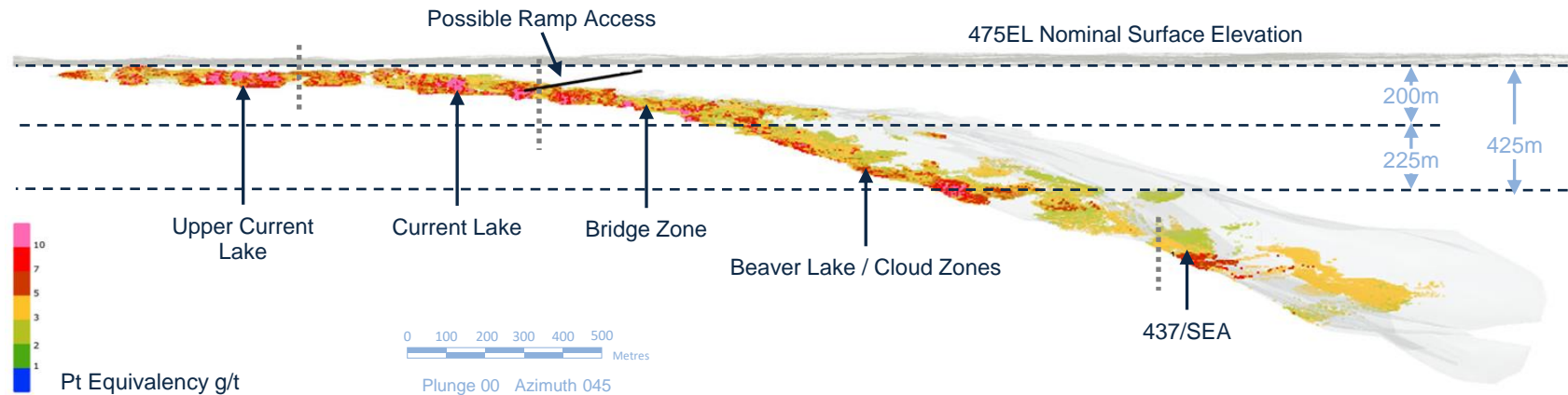
TBN PROJECT PLAN VIEW – ZONAL LAYOUT

US\$77 CUTOFF (1.58g/t PdEq / 2.65g/t PtEq) 20M CROWN PILLAR REMOVED



CURRENT DEPOSIT SECTION VIEW – ZONAL GRADE LAYOUT

US\$77 CUTOFF (1.58g/t PdEq / 2.65g/t PtEq) 20M CROWN PILLAR REMOVED

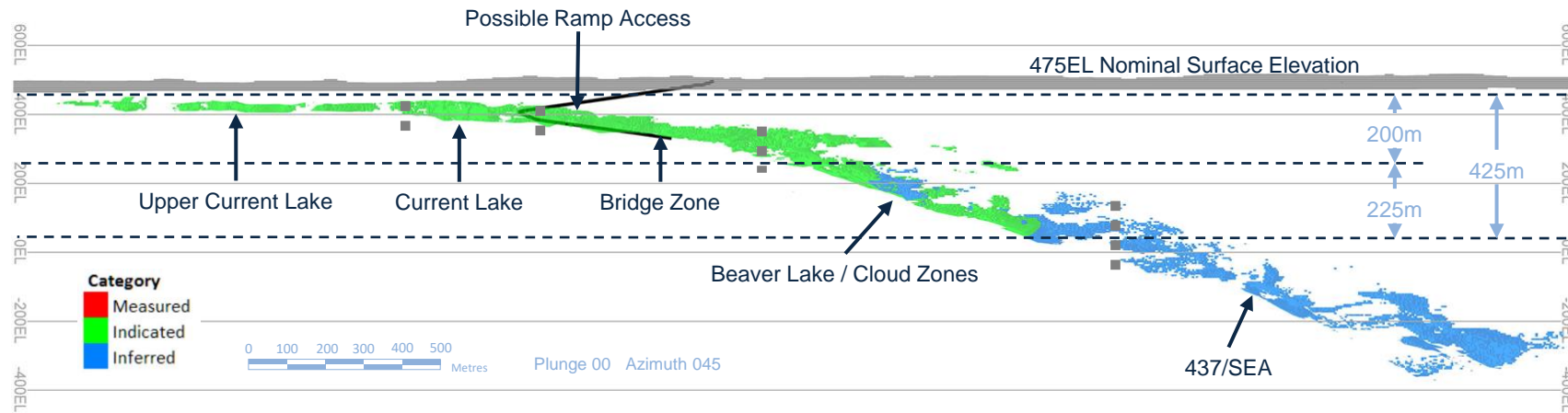


		Grade										
Category	Area	Tonnes	Pt (g/t)	Pd (g/t)	Au (g/t)	Ag (g/t)	Rh (g/t)	Co (g/t)	Cu (%)	Ni (%)	Pt Eq (g/t)	Pd Eq (g/t)
Indicated – Current Lake	Upper Current	1,089,212	1.60	1.50	0.08	1.72	0.07	148	0.35	0.20	6.50	3.87
	Current	1,534,911	2.10	1.96	0.11	2.25	0.05	142	0.41	0.21	7.97	4.74
	Bridge	3,355,050	1.72	1.67	0.08	1.49	0.05	130	0.35	0.17	6.67	3.97
	Beaver	4,481,507	1.23	1.14	0.05	1.00	0.03	139	0.20	0.16	4.82	2.87
	Cloud	1,538,497	0.93	0.89	0.04	0.66	0.04	136	0.17	0.16	4.00	2.38
	437-SE	–	–	–	–	–	–	–	–	–	–	–
TOTAL INDICATED RESOURCE		11,999,177	1.48	1.40	0.07	1.32	0.04	137	0.28	0.17	5.79	3.44



CURRENT DEPOSIT SECTION VIEW – INDICATED/INFERRED LAYOUT

LOOKING NE US\$77 CUTOFF (1.58g/t PdEq / 2.65g/t PtEq) 20M CROWN PILLAR REMOVED

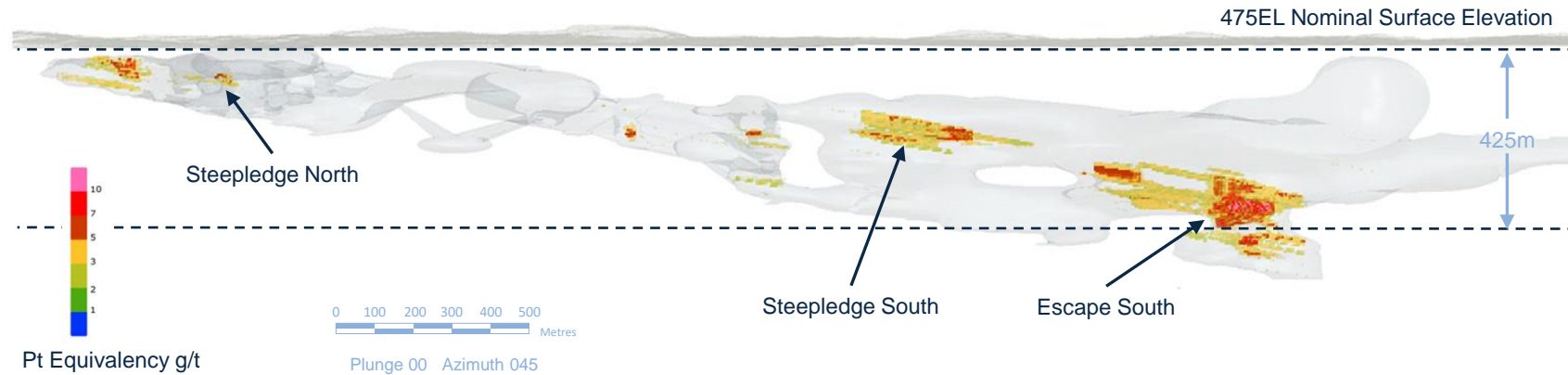


Category	Area	Tonnes	Pt Eq (g/t)	Pt Eq (Oz)	Pd Eq (g/t)	Pd Eq (Oz)
Indicated – Current Lake	Nominal Surface @ 475EL to 275EL (200m)	7,659,240	6.34	1,560,476	3.77	928,351
	275EL to 50EL (225m)	4,338,419	4.82	672,890	2.87	400,313
	Remaining Depth	1,518	4.29	210	2.56	125
TOTAL INDICATED RESOURCE		11,999,177	5.79	2,233,575	3.44	1,328,789
Inferred – Current Lake	Nominal Surface @ 475EL to 275EL (200m)	–	–	–	–	–
	275EL to 50EL (225m)	1,618,512	3.60	187,076	2.14	111,295
	Remaining Depth	4,788,447	3.34	513,544	1.98	305,516
TOTAL INFERRED RESOURCE		6,406,960	3.40	700,621	2.02	416,810



ESCAPE DEPOSIT SECTION VIEW – ZONAL GRADE LAYOUT

US\$77 CUTOFF (1.58g/t PdEq / 2.65g/t PtEq) 20M CROWN PILLAR REMOVED

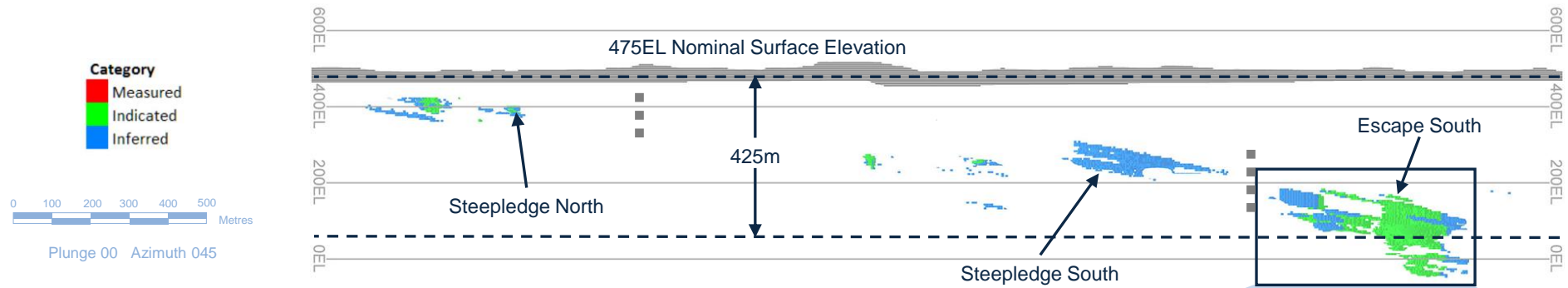


Category	Area	Tonnes	Pt Eq (g/t)	Pt Eq (Oz)	Pd Eq (g/t)	Pd Eq (Oz)
Indicated – Escape Lake	Nominal Surface @ 475EL to 50EL (425m)	3,803,382	6.42	785,440	3.82	467,270
	Remaining Depth	482,838	4.13	64,041	2.45	38,099
TOTAL INDICATED RESOURCE		4,286,220	6.16	849,481	3.67	505,369
Inferred – Escape Lake	Nominal Surface @ 475EL to 50EL (425m)	3,354,582	3.76	405,381	2.24	241,167
	Remaining Depth	90,597	3.28	9,551	1.95	5,682
TOTAL INFERRERED RESOURCE		3,445,179	3.75	414,932	2.23	246,850

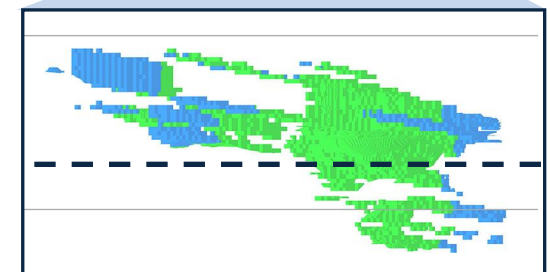


ESCAPE DEPOSIT LOOKING NE – CATEGORIES, AREA

US\$77 CUTOFF (1.58g/t PdEq / 2.65g/t PtEq) 20M CROWN PILLAR REMOVED



Category	Area	Tonnes	Pt Eq (g/t)	Pt Eq (Oz)	Pd Eq (g/t)	Pd Eq (Oz)
Indicated – Escape Lake	Nominal Surface @ 475EL to 50EL (425m)	3,803,382	6.42	785,440	3.82	467,270
	Remaining Depth	482,838	4.13	64,041	2.45	38,099
TOTAL INDICATED RESOURCE		4,286,220	6.16	849,481	3.67	505,369
Inferred – Escape Lake	Nominal Surface @ 475EL to 50EL (425m)	3,354,582	3.76	405,381	2.24	241,167
	Remaining Depth	90,597	3.28	9,551	1.95	5,682
TOTAL INFERRERED RESOURCE		3,445,179	3.75	414,932	2.23	246,850



2020-21 MILESTONES AND OBJECTIVES

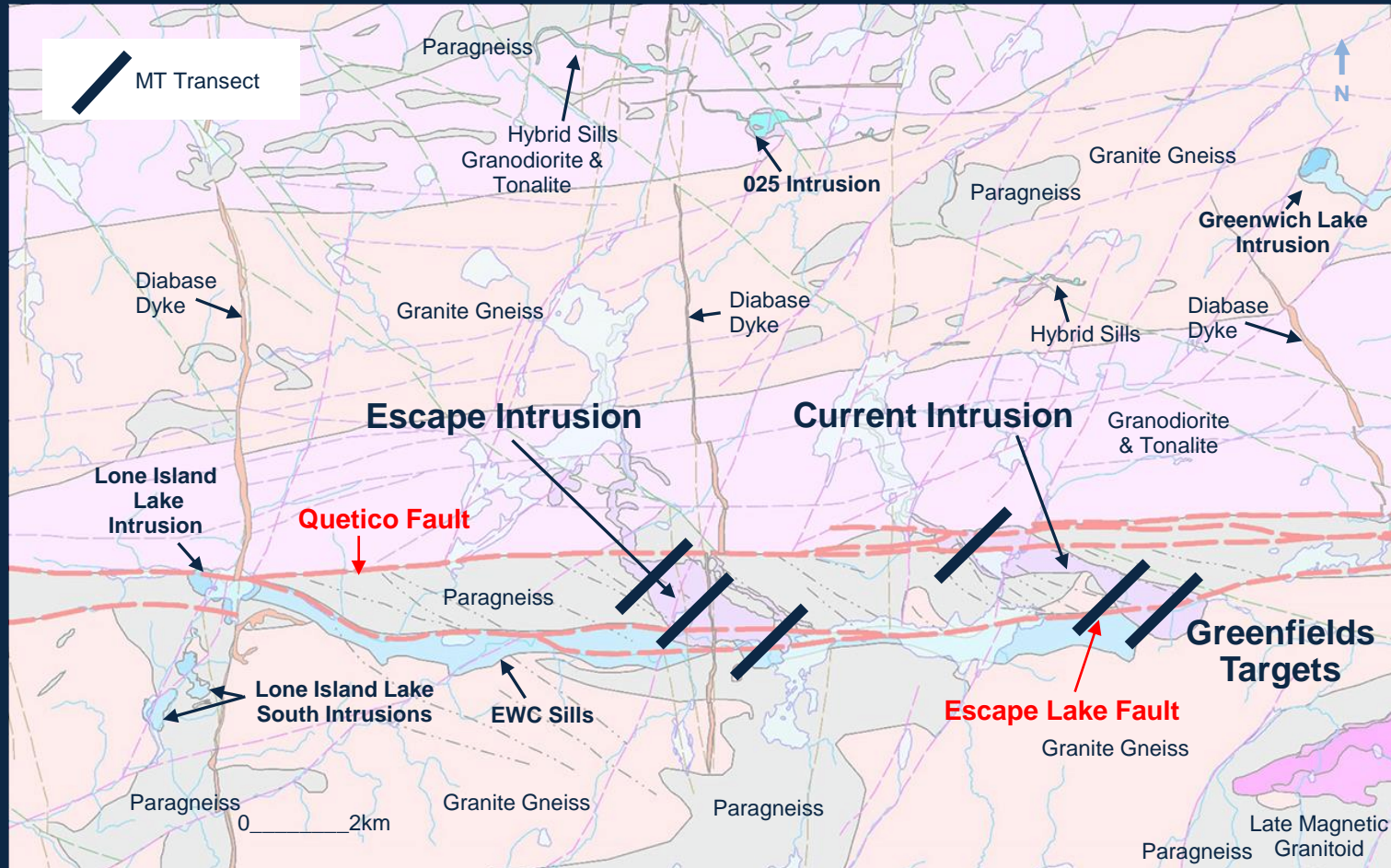
Project Timeline & Upcoming Milestones

- ✓ Consolidate two conduit-hosted palladium-platinum-copper-nickel-rhodium projects in close proximity at Thunder Bay North Project
- ✓ Pursuing Norilsk-style multi-ounce massive sulphide PGE-Ni-Cu mineralization in the conduit feeder systems
- ✓ NI 43-101 Resource Update Q1/21
- ✓ Positive Indigenous community engagement
- ❑ Multi-drill exploration program in 2021 for resource expansion, resource upgrade and discovery
- ❑ Metallurgical bulk sample bench testing
- ❑ Preliminary Economic Assessment (PEA) Q4/21



GEOLOGY MAP THUNDER BAY NORTH PROJECT

NORILSK MINERAL
DEPOSIT MODEL
MT GEOPHYSICS

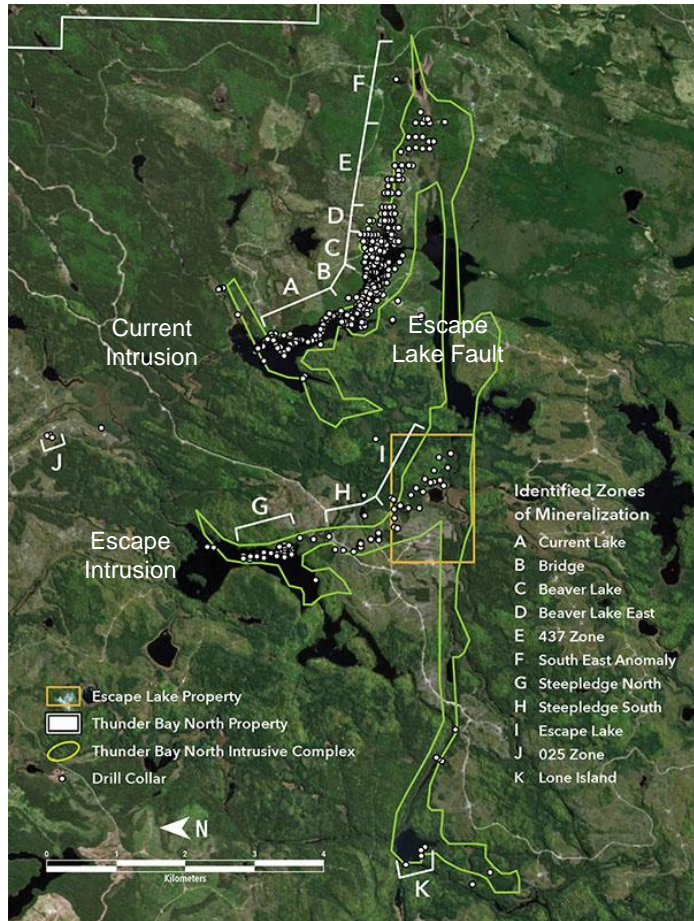


GREENFIELDS EXPLORATION TARGETING MASSIVE SULPHIDES

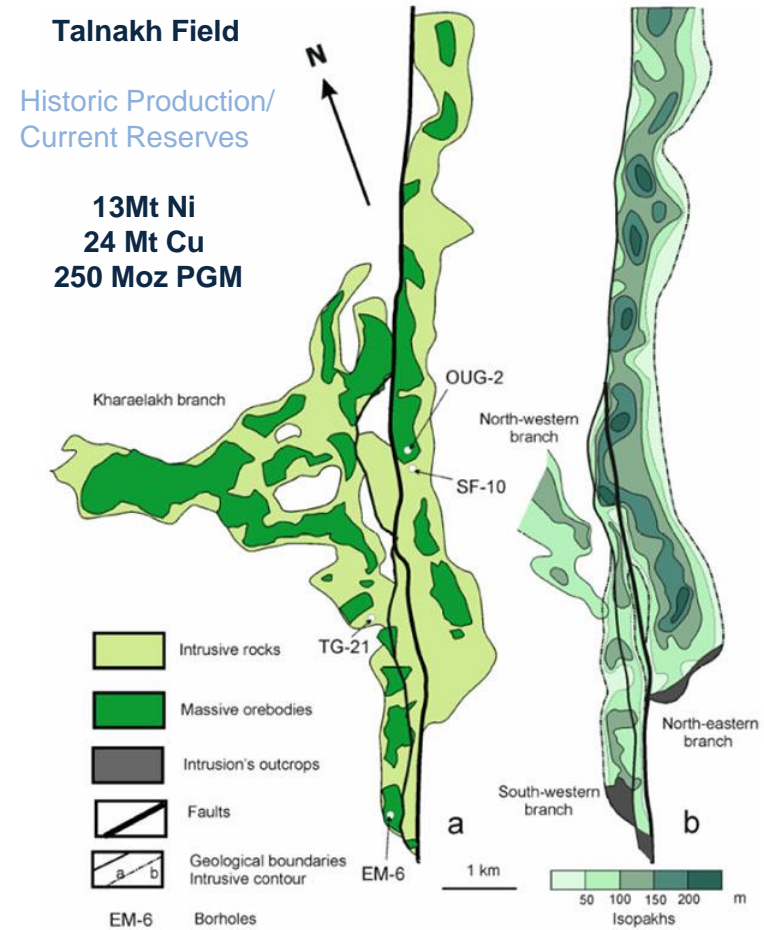
SIMILAR TO
NORILSK DEPOSIT

TBN INTRUSIVE
COMPLEX,
ESCAPE LAKE FAULT

COMPARISON
WITH TALNAKH
FAULT AT NORILSK



Note: Slide rotated 90 deg west

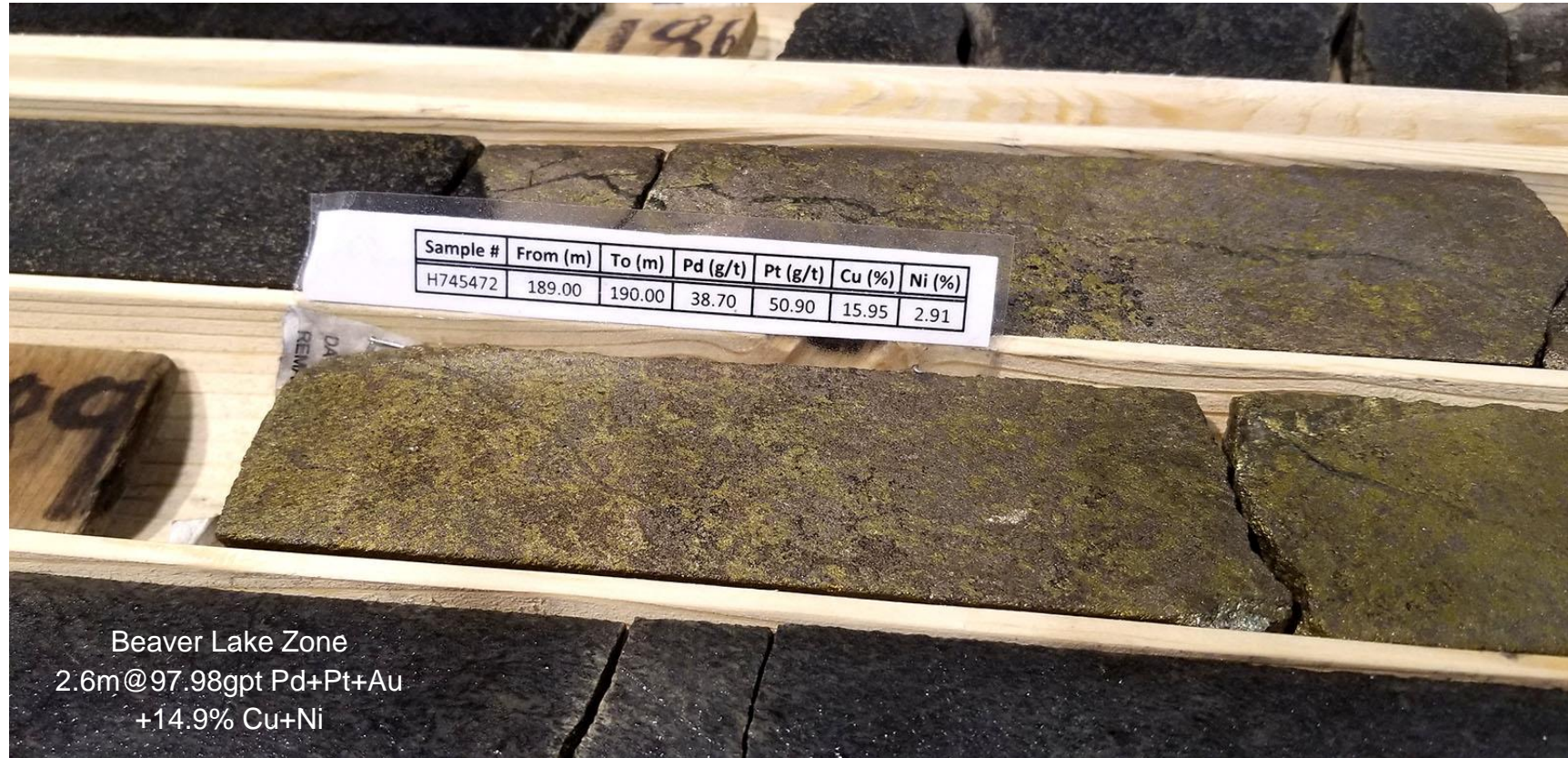


GREENFIELDS EXPLORATION TARGETING MASSIVE SULPHIDES

SIMILAR TO
NORILSK DEPOSIT

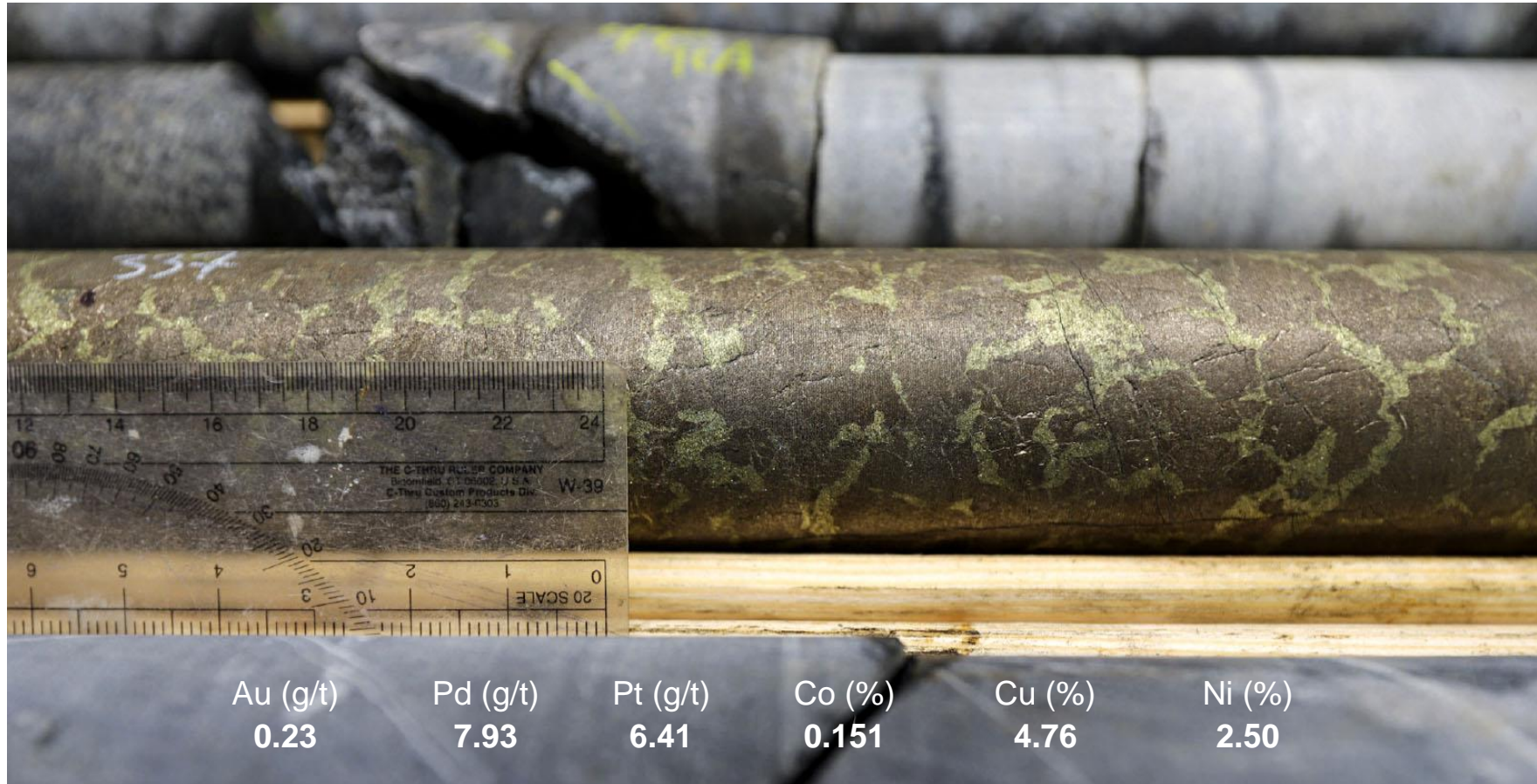
EXPLORATION
VECTOR

MASSIVE
SULPHIDES
IN THE CURRENT
DEPOSIT



GREENFIELDS EXPLORATION TARGETING MASSIVE SULPHIDES – NORILSK MODEL

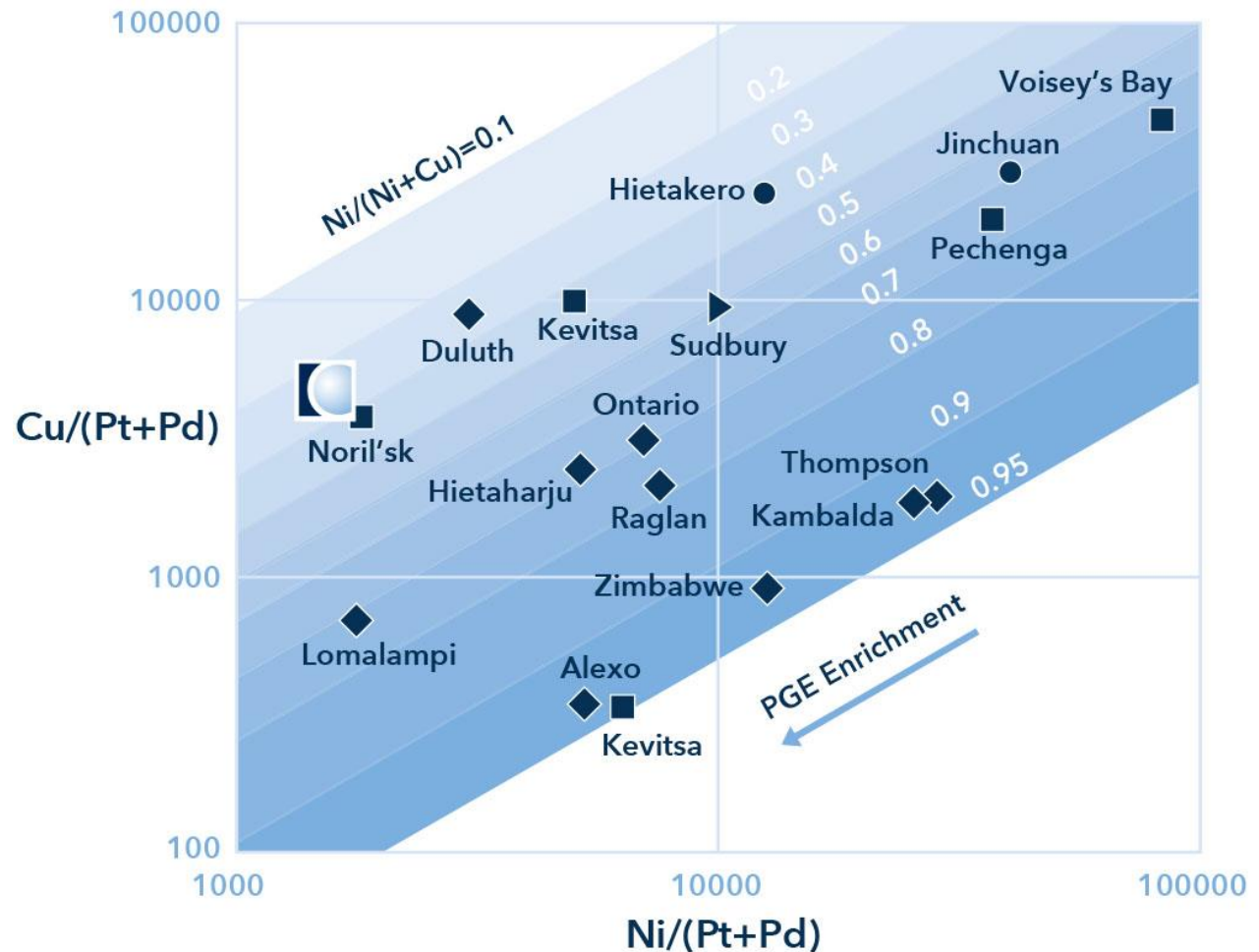
MASSIVE
SULPHIDES
IN ESCAPE
DEPOSIT
HOLE ELR21-041



GREENFIELDS EXPLORATION TARGETING MASSIVE SULPHIDES – NORILSK MODEL

MASSIVE SULPHIDES
IN THE ESCAPE DEPOSIT (“”)

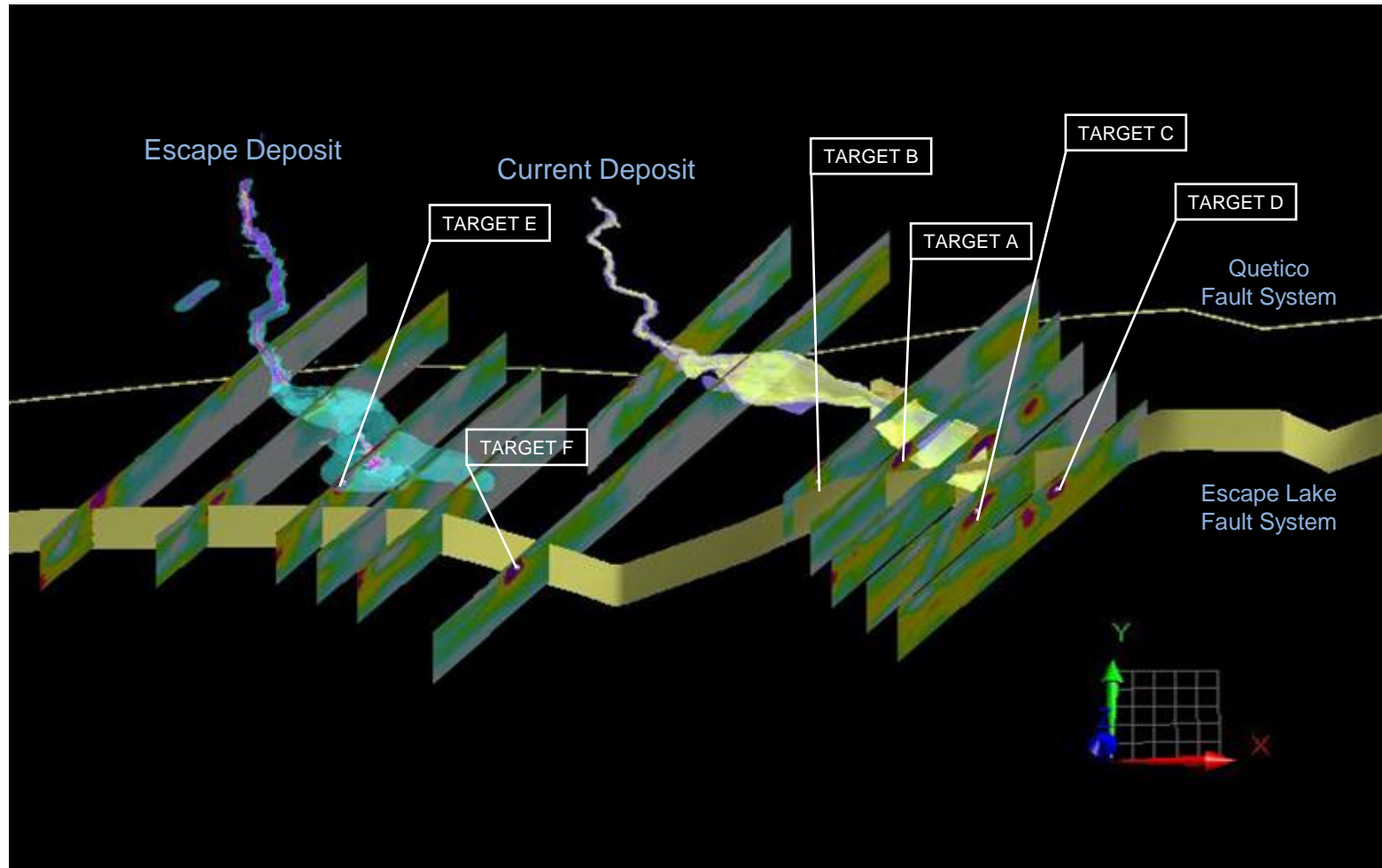
WORLD CLASS NI-CU
DEPOSIT ASSOCIATIONS



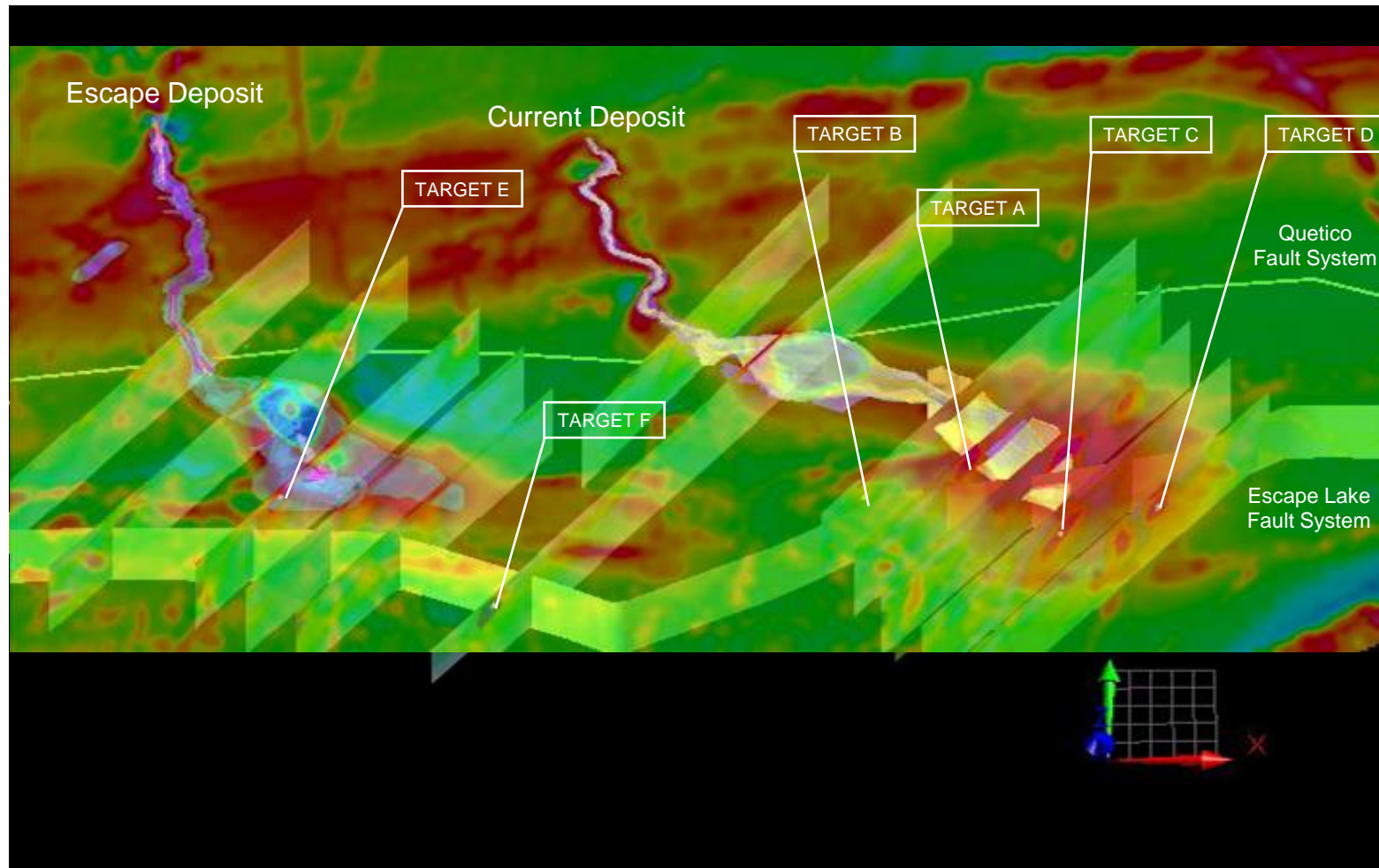
Konnunaho, J.P., Hanski, E.J., Karinen, T.K., Lahaye, Y., and Makkonen, H.V., 2018. The petrology and genesis of the Paleoproterozoic mafic intrusion-hosted Co-Cu-Ni deposit at Hietakero, NW Finnish Lapland. Bulletin of the Geological Society of Finland, v. 90, pp. 109–136



MT GEOPHYSICAL DATA TARGETING MAGMA CONDUITS AND MASSIVE SULPHIDES



MT GEOPHYSICAL DATA TARGETING MAGMA CONDUITS AND MASSIVE SULPHIDES



PGE MARKET COMPS MARKET CAPITALIZATION

Company	Exchange	Symbol	Flagship Asset	Status	Shares (M)	Currency	Price (\$)	Market Cap (\$M) Nov 16, 2021
New Age Metals	TSXV	NAM	River Valley	Exploration	210.1	CAD	0.12	25.2
Nickel Creek Platinum	TSX	NCP	Nickel Shaw	Advanced Exploration	388.0	CAD	0.12	44.6
Clean Air Metals Inc.	TSXV	AIR	Thunder Bay North	Advanced Exploration	167.3	CAD	0.26	43.5
Eastern Platinum	TSX	ELR	Crocodile River	Advanced Exploration	137.5	CAD	0.32	44.0
Palladium One	TSXV	PDM	Läntinen Koillismaa	Exploration	241.2	CAD	0.21	50.0
Group Ten Metals	TSXV	PGE	Stillwater West	Exploration	163.3	CAD	0.43	70.2
Generation Mining	CSE	GENM	Marathon	Feasibility Study	147.7	CAD	0.79	116.0
Legend Mining Ltd.	ASX	LEG	Rockford	Advanced Exploration	2,755.1	AUD	0.06	151.5
Platinum Group Metals	TSX	PTM	Waterberg	Feasibility Study	75.2	CAD	3.55	267.0
Talon Metals Corp.	TSX	TLO	Tamarack	Advanced Exploration	694.2	CAD	0.73	503.3
Chalice Mining Ltd.	ASX	CHN	Julimar	Advanced Exploration	354.2	AUD	9.86	3,492.8

CAD to AUD: 1.00



PGE MARKET PEER COMPS RESOURCE COMPARISON

Company	Flagship Asset	Category	Tonnes	Pt (g/t)	Pd (g/t)	Au (g/t)	Ag (g/t)	Rh (g/t)	Co (%)	Cu (%)	Ni (%)	4E	3E	PtEq (g/t)	PdEq (g/t)
New Age Metals	River Valley	Measured & Indicated	99,255,200	0.20	0.52	0.03	-	0.01	0.01	0.06	0.02	0.76	-	-	0.90
		Inferred	52,306,000	0.31	0.31	0.04	-	0.01	0.00	0.04	0.02	0.67	-	-	0.63
Nickel Creek Platinum	Nickel Shaw	Measured & Indicated	323,400,000	0.25	0.26	0.05	-	-	0.02	0.16	0.26	-	-	-	-
		Inferred	108,100,000	0.26	0.28	0.04	-	-	0.02	0.15	0.29	-	-	-	-
Clean Air Metals Inc.	Thunder Bay North	Indicated	16,285,396	1.33	1.34	0.08	1.62	0.05	0.02	0.34	0.20	2.80	-	5.89	3.50
		Inferred	9,852,138	0.67	0.68	0.07	1.01	0.01	0.01	0.31	0.15	1.43	-	3.52	2.10
Eastern Platinum	Crocodile River	No Resource	-	-	-	-	-	-	-	-	-	-	-	-	-
Group Ten Metals	Stillwater West	No Resource	-	-	-	-	-	-	-	-	-	-	-	-	-
Palladium One	Läntinen Koillismaa	Indicated	10,985,000	0.27	0.81	0.09	-	-	-	0.15	0.09	-	-	1.80	-
		Inferred	10,875,000	0.20	0.64	0.08	-	-	-	0.13	0.08	-	-	1.50	-
Generation Mining	Marathon	Measured & Indicated	179,248,000	0.18	0.56	0.07	1.60	-	-	0.20	-	-	-	-	1.24
		Inferred	688,000	0.12	0.37	0.05	1.40	-	-	0.19	-	-	-	-	0.95
Platinum Group Metals	Waterberg	Measured & Indicated	242,437,860	0.98	2.13	0.22	-	0.05	-	0.10	0.18	3.38	-	-	-
		Inferred	66,666,549	0.96	1.92	0.34	-	0.04	-	0.11	0.15	3.26	-	-	-
Talon Metals Corp.	Tamarack	Indicated	3,926,000	0.41	0.26	0.20	-	-	0.05	1.02	1.91	-	-	-	-
		Inferred	7,163,000	0.26	0.16	0.14	-	-	0.03	0.68	1.11	-	-	-	-
Chalice Gold Mines	Julimar	Indicated	150,000,000	0.17	0.74	0.03	-	-	0.016	0.10	0.17	-	0.94	-	1.60
		Inferred	180,000,000	0.15	0.76	0.03	-	-	0.016	0.09	0.16	-	0.94	-	1.60

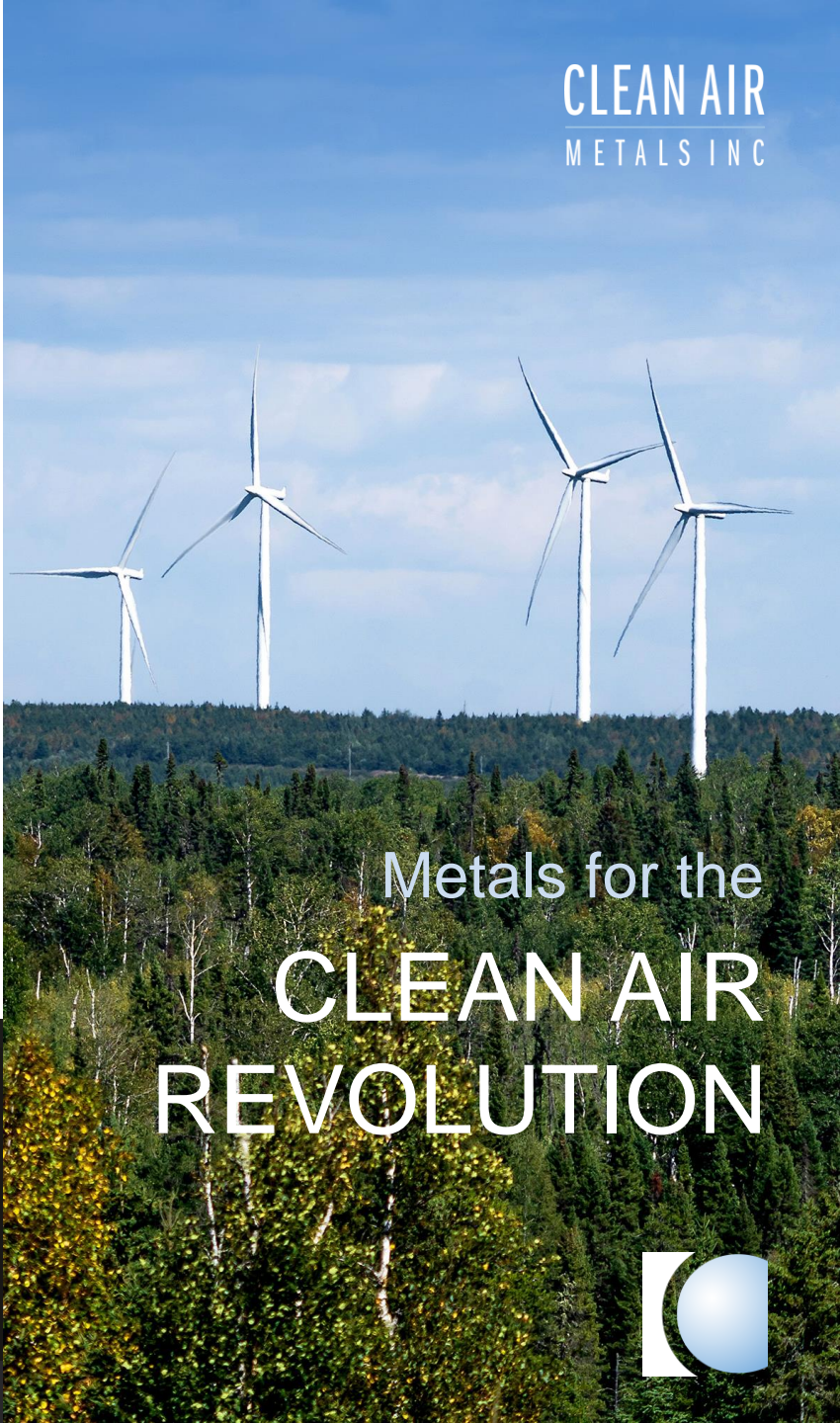
Note: All data has been sourced from company websites and publicly available technical reports.



INVESTMENT HIGHLIGHTS

Mid-Continent Rift PGE-Nickel-Copper District with Operating Mines

- Thunder Bay North Project
- Current Lake & Escape Lake Pt-Pd-Cu-Ni Deposits
- Total Indicated Resource at 3 Million oz PtEq
- Utilizing Norilsk-style Magma Conduit Model for Exploration Based on Structure, Stratigraphy and Presence of Massive Sulphides
- 4E PGM's (Pt+Pd+Rh+Au) Averaging 4g/t at Lower Current and Bridge Zone
- Accomplished Management Team
- Well Financed
- Social License to Explore - Written Communication Protocol with 3 First Nation Communities



Metals for the
**CLEAN AIR
REVOLUTION**



EXECUTIVE MANAGEMENT & BOARD

Dean Chambers, P.Eng. ICD.D Independent Director

Mr. Chambers is a professional engineer and financial executive with over 35 years of business, technical and financial experience. In 2017, Mr. Chambers retired as Executive Vice President and Chief Financial Officer at Sherritt International Corporation, a major international resource company. Mr. Chambers' career as a senior executive in the mining and chemical industries also includes progressive positions with The Dow Chemical Company, Falconbridge Limited and Dynatec Corporation. Most recently, Mr. Chambers served four years on the Board of Directors and chaired the Audit Committee of North American Palladium Ltd. leading up to its successful sale to Impala Platinum in 2019. Mr. Chambers holds the ICD.D designation from the Institute of Corporate Directors. Mr. Chambers also serves on the Industrial Advisory Committee for the Engineering and Management program at McMaster University.

MaryAnn Crichton, P.Eng. MBA Independent Director

Ms. Crichton is a Professional Engineer and senior executive with over 30 years of international business experience in financing; project development; environmental, social and governance (“ESG”)/Corporate Social Responsibility (“CSR”) and strategy. Ms. Crichton holds B.Sc. (Chemical Engineering) from the University of Alberta and an MBA from the Ivey Business School at Western University. She spent most of her career as Global Director of Management Consulting for Hatch Ltd. (“Hatch”), a global engineering, advisory and construction firm working in the mining, metals, and infrastructure and energy industries. Prior to joining Hatch, she worked in private equity and the resource and chemical industries. In 2017 and again in 2020, Ms. Crichton was elected to the Board of the Prospectors and Developers Association of Canada (“PDAC”) and is currently a member of both their Governance and Nominations Committee and CSR/Diversity and Inclusion Working Group. In 2018, she was elected to serve as PDAC’s representative on the Board of Mining Matters.

Ewan Downie Independent Director

Now CEO of the new i80 Gold, Mr. Downie was most recently President and CEO of Premier Gold Mines Limited since its inception in 2006. He has been working in the mineral exploration and mining industry for more than 25 years and was the founder of Premier’s predecessor, Woldfen Resources Inc. His is a storied career. Awards include the 2003 Bill Dennis Prospector of the Year Award from the Prospectors and Developers Association of Canada. He has participated in several gold and base metal discoveries and also sits on the Board of new Woldfen Resources Corp. and Premier Gold.



EXECUTIVE MANAGEMENT & BOARD (...CONTINUED)

Abraham Drost, P.Geo. CEO & Director

Mr. Drost is a former President and Director of Sabina Gold and Silver (SBB:TSX), former President and Director of Sandspring Resources Inc. (SSP:TSXV) and former CEO, Director of Source Exploration Corp. (SOP:TSXV) now Mexican Gold Corp. Mr. Drost is a former Chairman of Premier Gold Mines USA Inc. and the former CEO and founding Director of Premier Royalty Inc. (NSR:TSX), prior to the sale to Sandstorm Gold. He was a former CEO and then Director of Mega Precious Metals Inc. (MGP:TSXV) at the sale to Yamana. Mr. Drost was most recently CEO and Director of Carlisle Goldfields Ltd. (CGJ:TSX) at the sale to Alamos (AGI:TSX). Previously, Mr. Drost was Regional Land Use Geologist with the Ontario Government.

Jim Gallagher, P.Eng. Executive Chairman

Mr. Gallagher is a Professional Mining Engineer with over 35 years of experience in mine operations, projects and executive management. He was most recently CEO of North American Palladium where he lead an operational turn-around which culminated in the sale of the company to Impala Platinum of South Africa late in 2019. Previously Mr Gallagher was Global Director of Mining for Hatch leading a large mine design and EPCM team on numerous projects around the world. He also spent over 20 years with Falconbridge in a number of engineering, project and operational management roles.

Mr Gallagher has been a board member of Harte Gold, Continental Gold and the Ontario Mining association.

Shannin Metatawabin Independent Director

Mr. Metatawabin is currently the CEO of the National Aboriginal Capital Corporations Association (NACCA) which is an umbrella organization for a network of 59 Aboriginal Financial Institutions (AFIs) across Canada. Over the last 30 years the AFI network has provided nearly \$3 billion to support economic development and the unique and specific needs of 50,000 small and medium size loans to First Nation, Metis and Inuit across Canada. Mr. Metatawabin is Cree / Inninow from Fort Albany (Pethtabek) First Nation of the Mushkegowuk Cree Nation. He holds a Bachelor of Arts in Political Science from Carleton University and an Aboriginal Economic Development Certificate from the University of Waterloo. He previously served as the Manager of Aboriginal Affairs and Sustainability with De Beers Canada and as the Executive Director of the Ontario First Nations Technical Services Corporation.





Jim Gallagher, P.Eng. Executive Chairman

705.690.7997 jgallagher@cleanairmetals.ca

Abraham Drost, P.Geo. CEO

807.252.7800 adrost@cleanairmetals.ca

Carson Phillips, M.Eng. VP Corporate Development

604.657.5871 cphillips@cleanairmetals.ca

TSXV AIR OTCQB CLRMF FRA CKU

CLEANAIRMETALS.CA

APPENDIX



OPERATIONAL EXPLORATION MANAGEMENT

Dawn Evans-Lamswood, MSc, P.Geo VP Exploration

Ms. Dawn Evans-Lamswood's career spans two decades of exploration experience exploring the Voisey's Bay district after joining the Archean Resources drilling team in 1995, immediately following the discovery of the Ovoid Zone. Her career continued in the area with Inco and its successor company Vale Inco, recently retiring with the position of Exploration Manager, Brown Field Exploration, Vale North Atlantic. Ms. Evans-Lamswood has co-authored numerous publications on the Voisey's Bay deposit and district.

Bruce Mackie, P.Geo Senior Project Advisor

Mr. Bruce W. Mackie, P. Geo., a senior Exploration Geologist with 38 years of progressive experience in all phases of exploration program management, including as VP of North American Palladium Inc., from concept, acquisition, budgeting, evaluation and ore reserve definition.

Allan MacTavish, MSc, P.Geo VP Project Manager

Allan MacTavish is a specialist in PGE-Cu-Ni exploration and obtained a B.Sc. (Honours) Degree in Geology from Laurentian University in 1977 and a M.Sc. Degree in Geology from Lakehead University in 1992. He has been actively involved in the mineral exploration industry since 1975 with various major and junior mining/mineral exploration companies and has also worked as a Field Geoscientist for the Ontario Geological Survey. He has been Exploration Manager, Canada for Magma Metals (Canada) Limited and its successor Panoramic PGMs (Canada) Limited since May 2007, and is based in Thunder Bay, Ontario. He and his staff were instrumental in bringing the Magma/Panoramic Thunder Bay North Pt-Pd-Cu-Ni deposit from a newly discovered raw prospect to a well-defined, polymetallic, magmatic sulphide deposit with a 16.3 million tonne indicated resource, now including the Escape Deposit. Before joining Magma Metals/ Panoramic Resources he was a Consulting Geologist specializing in PGE-Ni-Cu exploration.

Carson Phillips, M.Eng. VP Corporate Development

Carson Phillips is a mining executive with over a decade of experience with a focus on precious metals. He was also an initial founder and director of Ecuador Gold & Copper Corp. (TSX.V: EGX) which was subsequently acquired by Lumina Gold Corp. (TSX.V: LUM) in 2016. Carson has a degree in Business Administration from the University of British Columbia (Okanagan) as well as a degree in International Business from Hogeschool Zeeland in the Netherlands. Mr. Phillips has also completed a Master of Engineering in Mine Economics & Finance from the University of British Columbia in 2014.

Derek Wilton, PhD, P.Geo Senior Geological Advisor

Dr. Derek Wilton is Honorary Research Professor (from 1995) in the Department of Earth Sciences, Memorial University. Most of his research has been conducted in Labrador, from Cape Chidley to the Straits to Labrador West. He has authored or co-authored over 40 papers in referenced journals, 30 books, 45 referenced government papers, over 180 published abstracts, and in excess of 225 contract reports for industry government and aboriginal groups. In 2013, he received the inaugural "Geoscientist of the Year" award from the NL section of the Canadian Institute of Mining and Metallurgy (CIM). He was elected an International Fellow of the Explorers Club in 2010, and elected as Fellow of the Royal Canadian Geographical Society in 2013. His research was recognized by Royal Canadian Geographical Society as one of "Seven Amazing Projects in 2018".



ENGINEERING SERVICES PROVIDER

NORDMIN GROUP OF COMPANIES ENGINEERING·CONSTRUCTION·OPERATION

Clean Air Metals Inc. recently engaged Nordmin Engineering Ltd. as the Technical Services Provider for the Thunder Bay North Project. Nordmin will provide the following items within its scope of work:

Work Package 1 ("WP1") Resource validation

- Validate and approve the existing geological model and historic estimate on the Current Lake Deposit.
- Supervise and approve the development of a preliminary geological model of the Escape Lake Project in cooperation with the Database Geologist and VP Project Manager.
- Supervise and approve the development of the drilling database and preliminary resource model for the Escape Lake Project in cooperation with Clean Air Metals' Database Geologist.
- Develop a global resource estimate for the Thunder Bay North Project.

Work Package 2 ("WP2") Early Tradeoff Studies

The WP2 early trade-off studies for the Current Lake Deposit will be conceptual in nature, at an order of magnitude that is comparable to a scoping/PEA level of study. The principal parameters for a conceptual study are mostly assumed and/or factored. Accordingly, the level of accuracy is $\pm 35\%$. Nordmin will incorporate risk, peer and environmental reviews, following the ESG principles, into each of the following mining trade-off studies:

- Underground Ramp Access
- UG Mining Method
- UG Geotechnical Review
- Metallurgical/Preliminary Flow Sheet Design
- Tailings Management Option Analysis and Initial Design
- Electric Vehicle Study
- Surface Works and Infrastructure Study
- Simplified, pre-tax cashflow analysis to be included in applicable trade-off studies.



THUNDER BAY NORTH 43-101 RESOURCE

Thunder Bay North Project Grade Profile (at \$US77 Cutoff)

Category	Tonnes	Grade									
		Pt (g/t)	Pd (g/t)	Au (g/t)	Ag (g/t)	Rh (g/t)	Co (g/t)	Cu (%)	Ni (%)	Pt Eq (g/t)	Pd Eq (g/t)
Indicated – Current Lake	11,999,177	1.48	1.40	0.07	1.32	0.04	137	0.28	0.17	5.79	3.44
Indicated – Escape Lake	4,286,220	0.92	1.18	0.12	2.45	0.06	209	0.52	0.28	6.16	3.67
TOTAL INDICATED RESOURCE	16,285,396	1.33	1.34	0.08	1.62	0.05	156	0.34	0.20	5.89	3.50
Inferred – Current Lake	6,406,960	0.68	0.65	0.06	0.95	0.01	123	0.30	0.14	3.40	2.02
Inferred – Escape Lake	3,445,179	0.64	0.73	0.07	1.13	0.00	173	0.33	0.18	3.75	2.23
TOTAL INFERRED RESOURCE	9,852,138	0.67	0.68	0.07	1.01	0.01	140	0.31	0.15	3.52	2.10

Thunder Bay North Project Contained Metal (at \$US77 Cutoff)

Category	Tonnes	Metal									
		Pt (Oz)	Pd (Oz)	Au (Oz)	Ag (Oz)	Rh (Oz)	Co (Tonnes)	Cu (Tonnes)	Ni (Tonnes)	Pt Eq (Oz)	Pd Eq (Oz)
Indicated – Current Lake	11,999,177	569,176	538,181	26,121	508,434	16,998	1,649	33,751	20,969	2,233,575	1,328,789
Indicated – Escape Lake	4,286,220	127,090	162,337	16,928	337,946	8,009	896	22,390	12,016	849,481	505,369
TOTAL INDICATED RESOURCE	16,285,396	696,266	700,517	43,050	846,380	25,008	2,544	56,141	32,985	3,083,056	1,834,158
Inferred – Current Lake	6,406,960	140,400	133,333	12,888	195,484	1,836	785	19,155	9,113	700,621	416,810
Inferred – Escape Lake	3,445,179	70,520	80,989	7,754	124,809	71	595	11,293	6,046	414,932	246,850
TOTAL INFERRED RESOURCE	9,852,138	210,919	214,322	20,642	320,293	1,907	1,380	30,449	15,159	1,115,553	663,660

Qualifying Statements and Notes The Mineral Resource estimate was independently prepared under the supervision of Mr. Glen Kuntz, P.Geo. (Ontario) of Nordmin Engineering Ltd., a "Qualified Person" under National Instrument 43-101 Standards of Disclosure for Mineral Projects. Verification included a site visit to inspect drilling, logging, density measurement procedures and sampling procedures, and a review of the control sample results used to assess laboratory assay quality. In addition, a random selection of the drill hole database results was compared with original records.



THUNDER BAY NORTH 43-101 RESOURCE

Thunder Bay North Grade

			Grade									
Category	Area	Tonnes	Pt (g/t)	Pd (g/t)	Au (g/t)	Ag (g/t)	Rh (g/t)	Co (g/t)	Cu (%)	Ni (%)	Pt Eq (Oz)	Pd Eq (Oz)
Indicated	Upper Current	1,089,212	1.60	1.50	0.08	1.72	0.07	148	0.35	0.20	6.50	3.87
Current Lake	Current	1,534,911	2.10	1.96	0.11	2.25	0.05	142	0.41	0.21	7.97	4.74
	Bridge	3,355,050	1.72	1.67	0.08	1.49	0.05	130	0.35	0.17	6.67	3.97
	Beaver	4,481,507	1.23	1.14	0.05	1.00	0.03	139	0.20	0.16	4.82	2.87
	Cloud	1,538,497	0.93	0.89	0.04	0.66	0.04	136	0.17	0.16	4.00	2.38
	437-SE	0	–	–	–	–	–	–	–	–	–	–
Indicated	Steepledge North	135,650	0.71	0.81	0.06	1.28	0.01	157	0.28	0.18	3.87	2.30
Escape Lake	Steepledge South	45,180	0.87	1.02	0.05	1.14	0.00	141	0.28	0.17	4.25	2.53
	Escape South Perimeter	1,754,080	0.48	0.58	0.08	1.45	0.03	176	0.37	0.21	3.78	2.26
	Escape South High Grade Zone	2,351,310	1.27	1.65	0.16	3.29	0.08	238	0.66	0.34	8.11	4.82
TOTAL INDICATED RESOURCE		16,285,396	1.33	1.34	0.08	1.62	0.05	156	0.34	0.20	5.89	3.50
Inferred	Upper Current	0	–	–	–	–	–	–	–	–	–	–
Current Lake	Current	0	–	–	–	–	–	–	–	–	–	–
	Bridge	0	–	–	–	–	–	–	–	–	–	–
	Beaver	1,735,331	0.80	0.75	0.05	0.79	0.02	146	0.20	0.18	3.72	2.21
	Cloud	0	–	–	–	–	–	–	–	–	–	–
	437-SE	4,671,629	0.64	0.61	0.07	1.01	0.01	114	0.34	0.13	3.28	1.95
Inferred	Steepledge North	148,609	0.44	0.52	0.05	0.53	0.00	150	0.26	0.21	3.14	1.87
Escape Lake	Steepledge South	2,287,589	0.74	0.84	0.07	1.15	0.00	173	0.32	0.16	3.96	2.36
	Escape South Perimeter	915,422	0.43	0.53	0.08	1.13	0.00	173	0.35	0.19	3.35	1.99
	Escape South High Grade Zone	93,559	0.43	0.34	0.09	1.45	0.01	191	0.38	0.20	3.29	1.96
TOTAL INFERRED RESOURCE		9,852,138	0.67	0.68	0.07	1.01	0.01	140	0.31	0.15	3.52	2.10



THUNDER BAY NORTH 43-101 RESOURCE

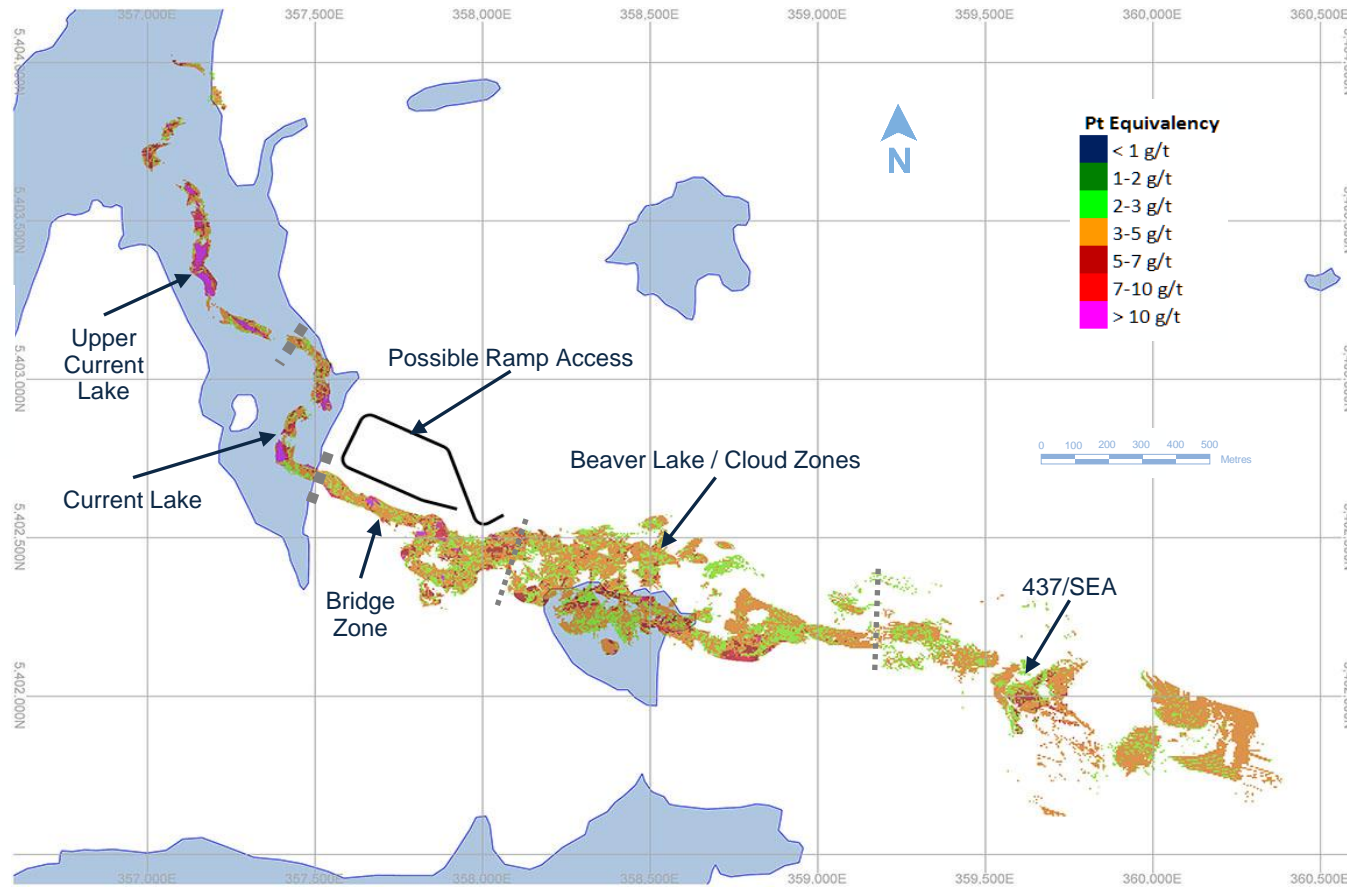
Thunder Bay North Contained Metal

Category	Area	Tonnes	Metal									
			Pt (Oz)	Pd (Oz)	Au (Oz)	Ag (Oz)	Rh (Oz)	Co (Tonnes)	Cu (Tonnes)	Ni (Tonnes)	Pt Eq (Oz)	Pd Eq (Oz)
Indicated	Upper Current	1,089,212	56,185	52,487	2,692	60,154	2,342	161	3,800	2,150	227,801	135,523
Current Lake	Current	1,534,911	103,563	96,875	5,220	111,114	2,677	218	6,328	3,259	393,310	233,986
	Bridge	3,355,050	185,255	179,929	8,702	160,257	5,079	436	11,851	5,832	720,020	428,351
	Beaver	4,481,507	177,932	164,879	7,292	144,294	4,842	625	9,168	7,343	694,657	413,262
	Cloud	1,538,497	46,241	44,010	2,216	32,615	2,058	209	2,604	2,385	197,787	117,667
	437-SE	-	-	-	-	-	-	-	-	-	-	-
Indicated	Steepledge North	135,650	3,087	3,545	266	5,577	43	21	383	238	16,897	10,053
Escape Lake	Steepledge South	45,180	1,258	1,485	79	1,653	0	6	125	76	6,175	3,673
	Escape South Perimeter	1,754,080	27,083	32,687	4,689	81,633	1,970	308	6,458	3,617	213,401	127,264
	Escape South High Grade Zone	2,351,310	95,662	124,619	11,894	249,083	5,996	560	15,424	8,085	613,007	364,380
TOTAL INDICATED RESOURCE		16,285,396	696,266	700,517	43,050	846,380	25,007	2,544	56,141	32,985	3,083,055	1,834,158
Inferred	Upper Current	-	-	-	-	-	-	-	-	-	-	-
Current Lake	Current	-	-	-	-	-	-	-	-	-	-	-
	Bridge	-	-	-	-	-	-	-	-	-	-	-
	Beaver	1,735,331	44,527	41,708	2,718	44,020	1,031	253	3,446	3,203	207,495	123,442
	Cloud	-	-	-	-	-	-	-	-	-	-	-
	437-SE	4,671,629	95,873	91,625	10,170	151,464	806	533	15,709	5,910	493,125	293,368
Inferred	Steepledge North	148,609	2,119	2,462	255	2,508	0	22	394	309	14,985	8,915
Escape Lake	Steepledge South	2,287,589	54,498	61,920	4,869	84,680	0	396	7,321	3,771	291,351	173,329
	Escape South Perimeter	915,422	12,884	15,314	2,353	33,246	42	158	3,226	1,775	98,690	58,709
	Escape South High Grade Zone	93,559	1,019	1,293	276	4,375	29	18	353	190	9,905	5,896
TOTAL INFERRERED RESOURCE		9,852,138	210,919	214,322	20,642	320,293	1,907	1,380	30,449	15,159	1,115,553	663,660



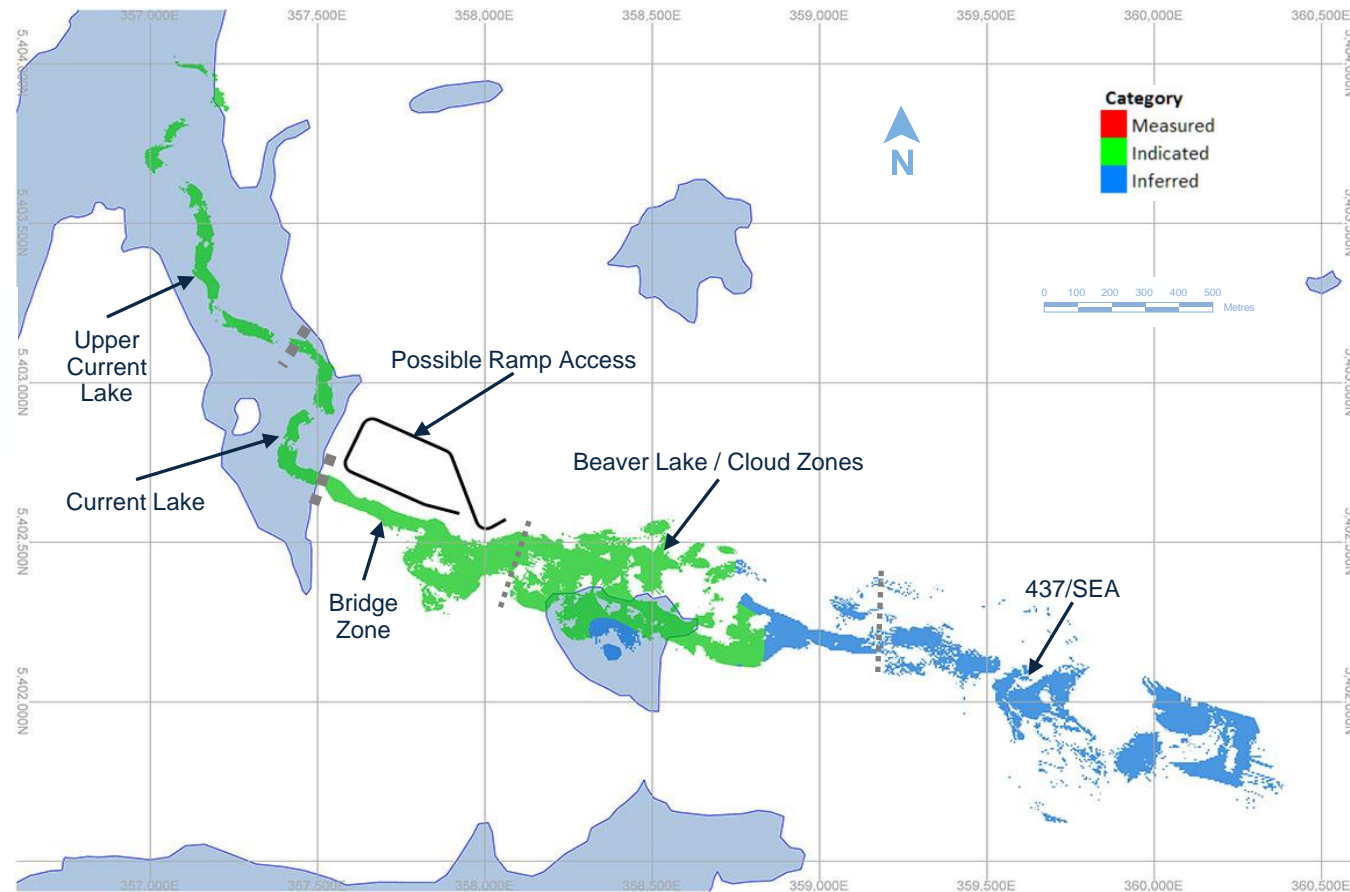
CURRENT DEPOSIT PLAN VIEW – GRADE DISTRIBUTION

US\$77 CUTOFF (1.58g/t PdEq / 2.65g/t PtEq) 20M CROWN PILLAR REMOVED



CURRENT DEPOSIT PLAN VIEW – INDICATED/INFERRED LAYOUT

US\$77 CUTOFF (1.58g/t PdEq / 2.65g/t PtEq) 20M CROWN PILLAR REMOVED



ESCAPE DEPOSIT PLAN VIEW – INDICATED/INFERRED LAYOUT

US\$77 CUTOFF (1.58g/t PdEq / 2.65g/t PtEq) 20M CROWN PILLAR REMOVED

