

Myuna Colliery

Community Consultative Committee

19 April 2021

Agenda

- Welcome and Introductions
- Apologies
- Declaration of Pecuniary Interest
- Minutes of the Previous Meeting
- Business Arising
- Company Update including
 - Myuna Mine Overview
 - Myuna Trucking (Modification 2)
- General Business
- Next Meeting

Myuna Colliery

OVERVIEW

Regulatory Instrument

Development Consent SH110/148

Project Approval 10_0080 MOD1


Environment Protection Licence 366

Mining Lease 1632

Mining Lease 1370

Mining Purposes Lease 334

Background

- Undertake mining using bord and pillar mining system
 - First Workings Only.
 - Approval to mine up to 3 million tonnes of coal per annum.
 - Coal is transported to Eraring Power Station using a dedicated overland conveyor.
-
- 

Operations Summary

Summary of Operational Performance

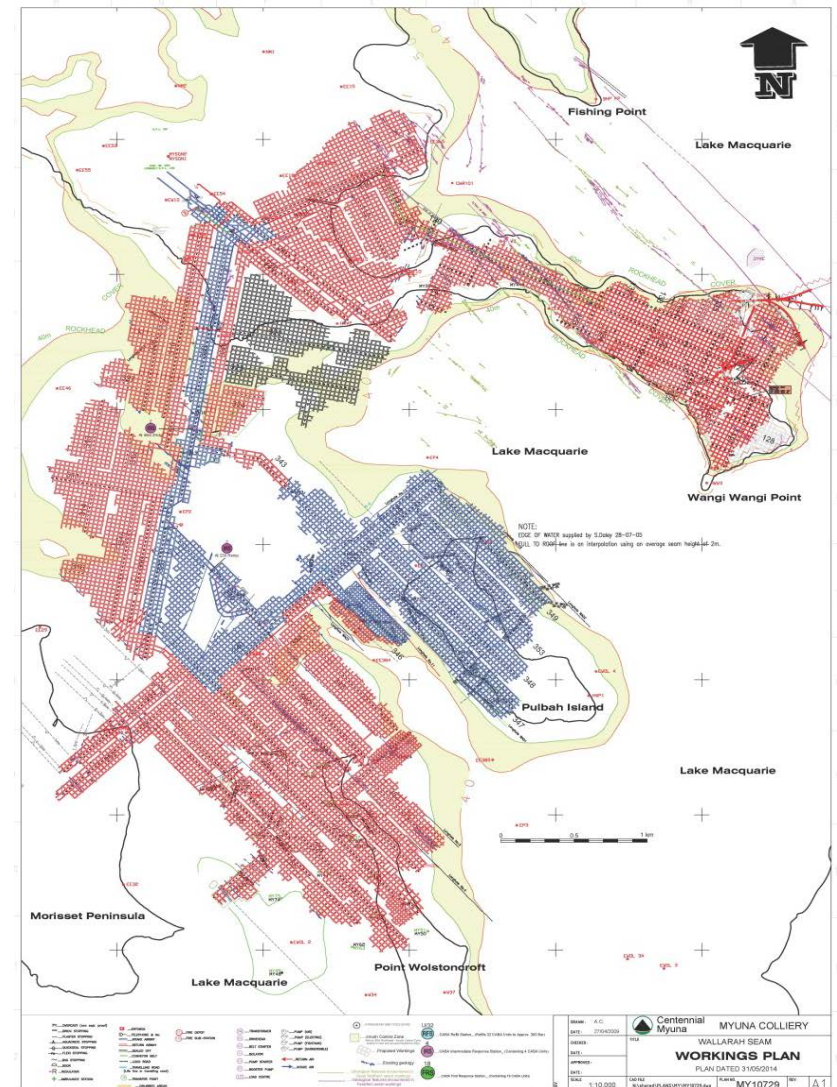
2021 YTD Tonnes Mined : ~200,000 tonnes

Overview of activities since last report period :

- The mine continues to operate in 2 Super Units with 4 continuous miners.
- Both super panels are operating in the Fassifern Seam.

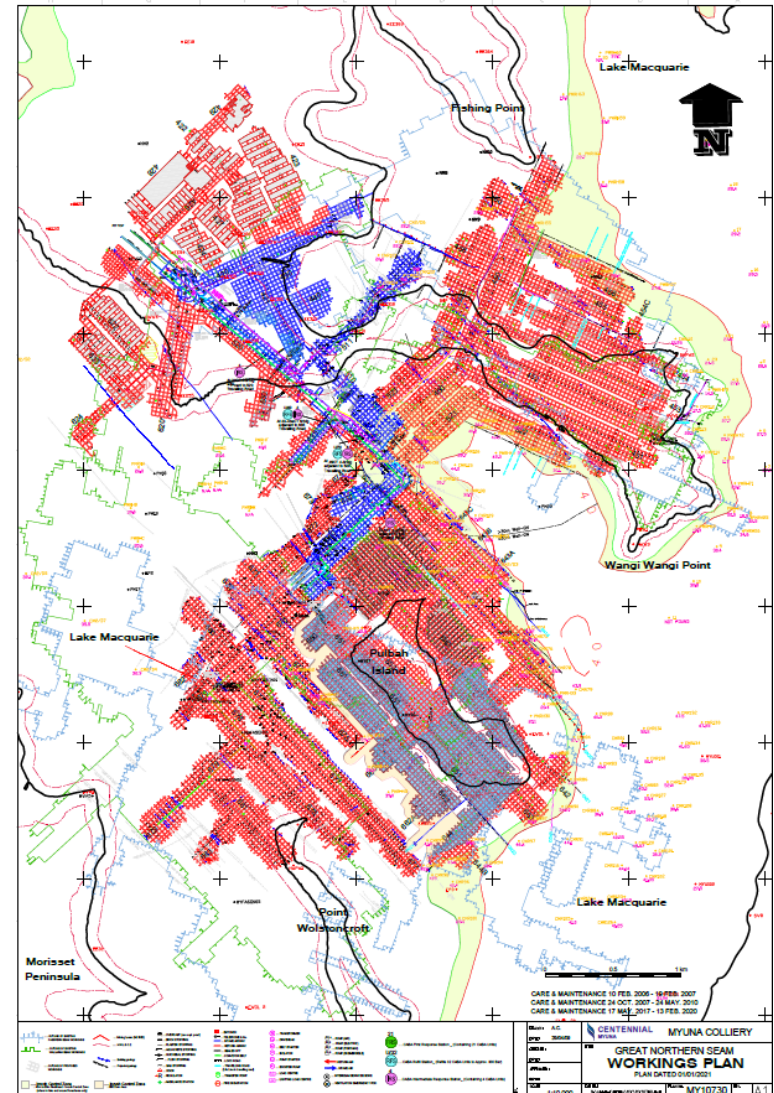
Current Mining Activities

- Mine Plan – Wallarah Seam
- No work during 2020
- No work planned during 2021



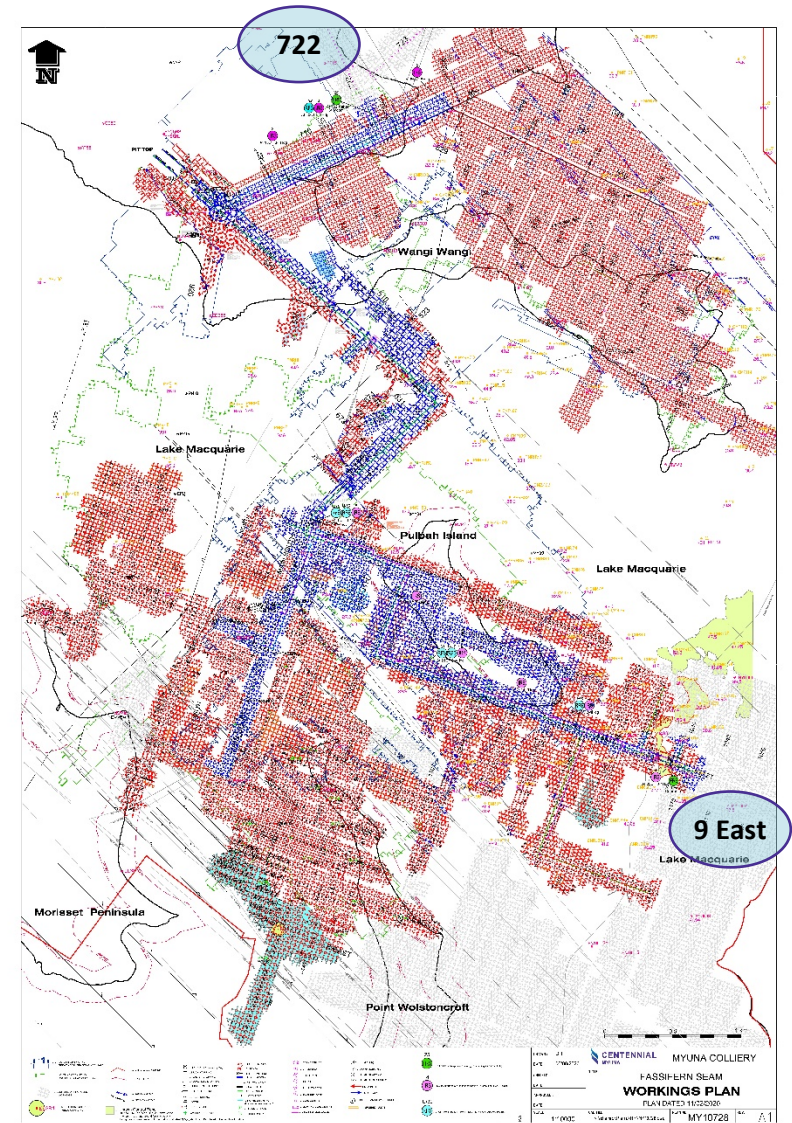
Current Mining Activities

- Mine Plan – Great Northern Seam
- No current workings
- Reviewing options towards the northern portion of the ML



Current Mining Activities

- Mine Plan Fassifern Seam
- Mining in 2 Production Units
- 722 Panel in the Northern area
- 9 East Panel in the South-Eastern area



Updates

- **Extraction plan**

- No planned extraction within the next 5 years.

- **Production**

- 2018 2.17 million tonnes.
- 2019 1.56 million tonnes against a budget of 2.65 million tonnes.
- 2020 0.96 million tonnes.
- 2021 1.30 million tonnes budget

Monitoring & Environmental Performance



Monitoring & Environmental Performance cont.

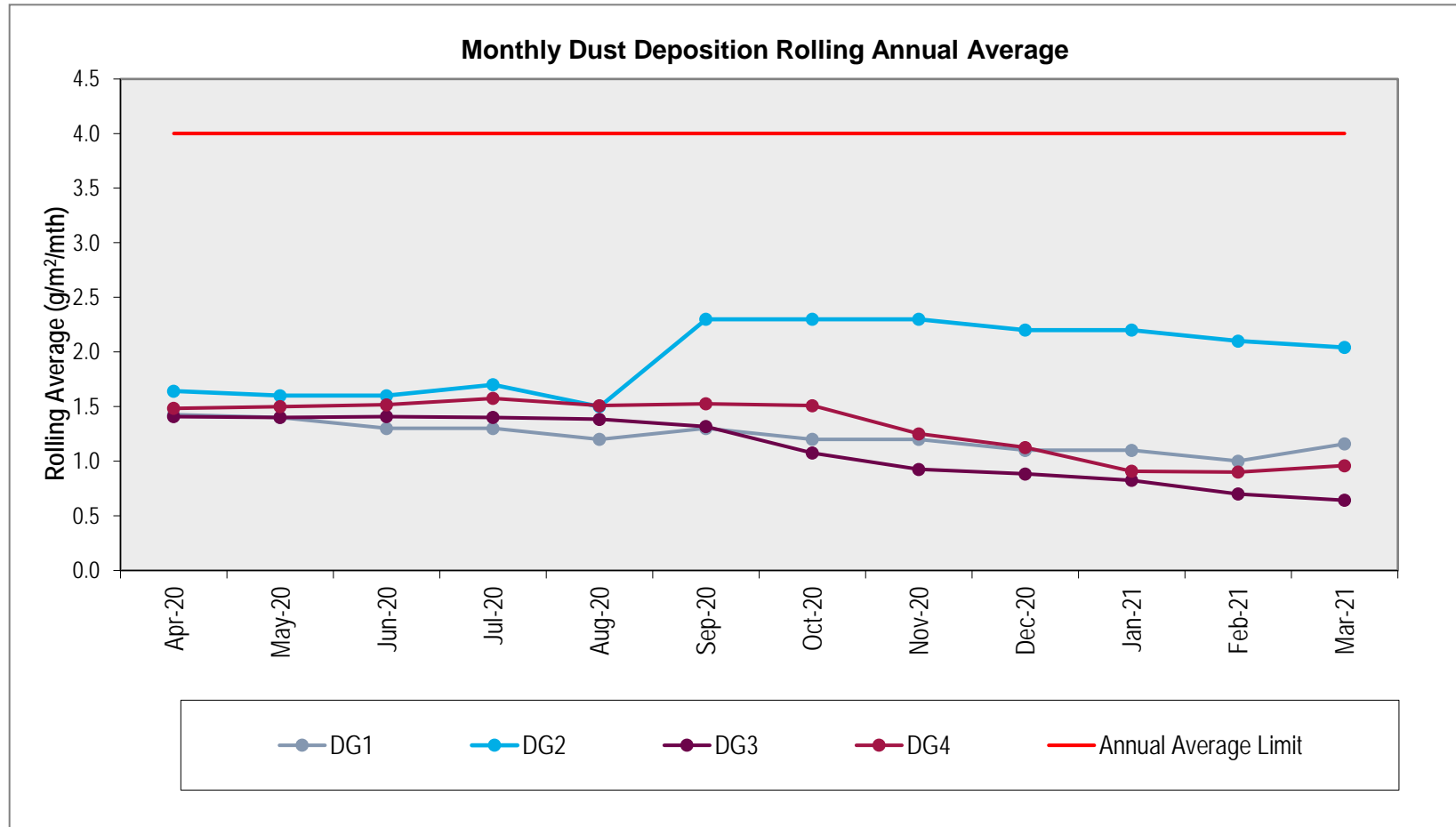
Noise Monitoring for Quarter 1 conducted 25-26 March 2021.

- Compliance with the relevant noise criteria was achieved at all noise monitoring locations

Location	Estimated Myuna LAeq(15minute) Contribution dBA			Noise Criteria LAeq(15minute) dBA			Compliance		
	Day	Eve	Night	Day	Eve	Night	Day	Eve	Night
R1	I/A1	34	I/A	35	35	35	Y	Y	Y
R2	I/A	I/A	I/A	35	35	35	Y	Y	Y
R3	I/A	I/A	I/A	35	35	35	Y	Y	Y
R4	I/A	I/A	33	35	40	38	Y	Y	Y
R5	I/A	NM	32	37	42	39	Y	Y	Y
R6	I/A	NM	34	37	42	39	Y	Y	Y
R7	I/A	31	37	37	42	39	Y	Y	Y
R8	I/A	I/A	38	37	42	39	Y	Y	Y

Monitoring & Environmental Performance

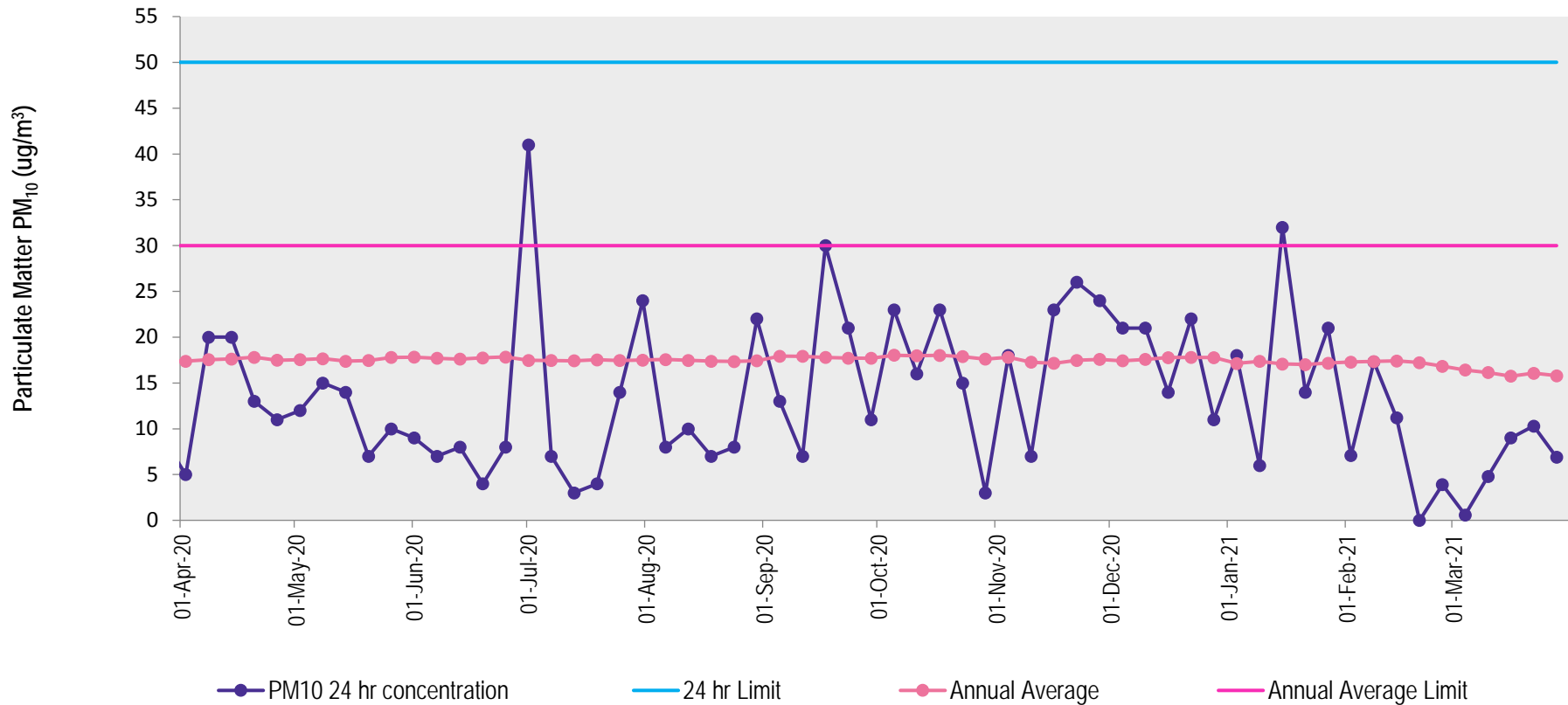
- Air Quality Monitoring



Monitoring & Environmental Performance

- High Volume Air Samplers

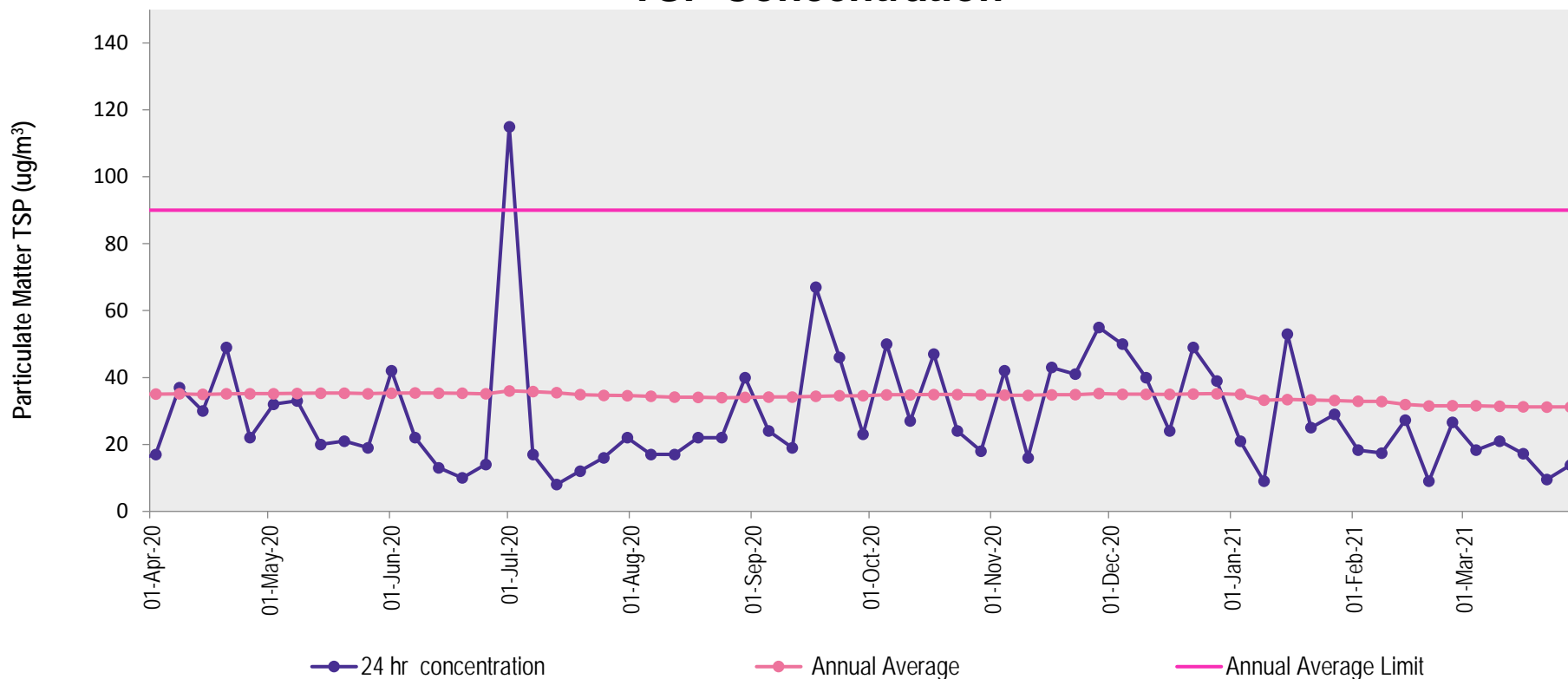
PM₁₀ Concentration



Monitoring & Environmental Performance

- **High Volume Air Samplers**

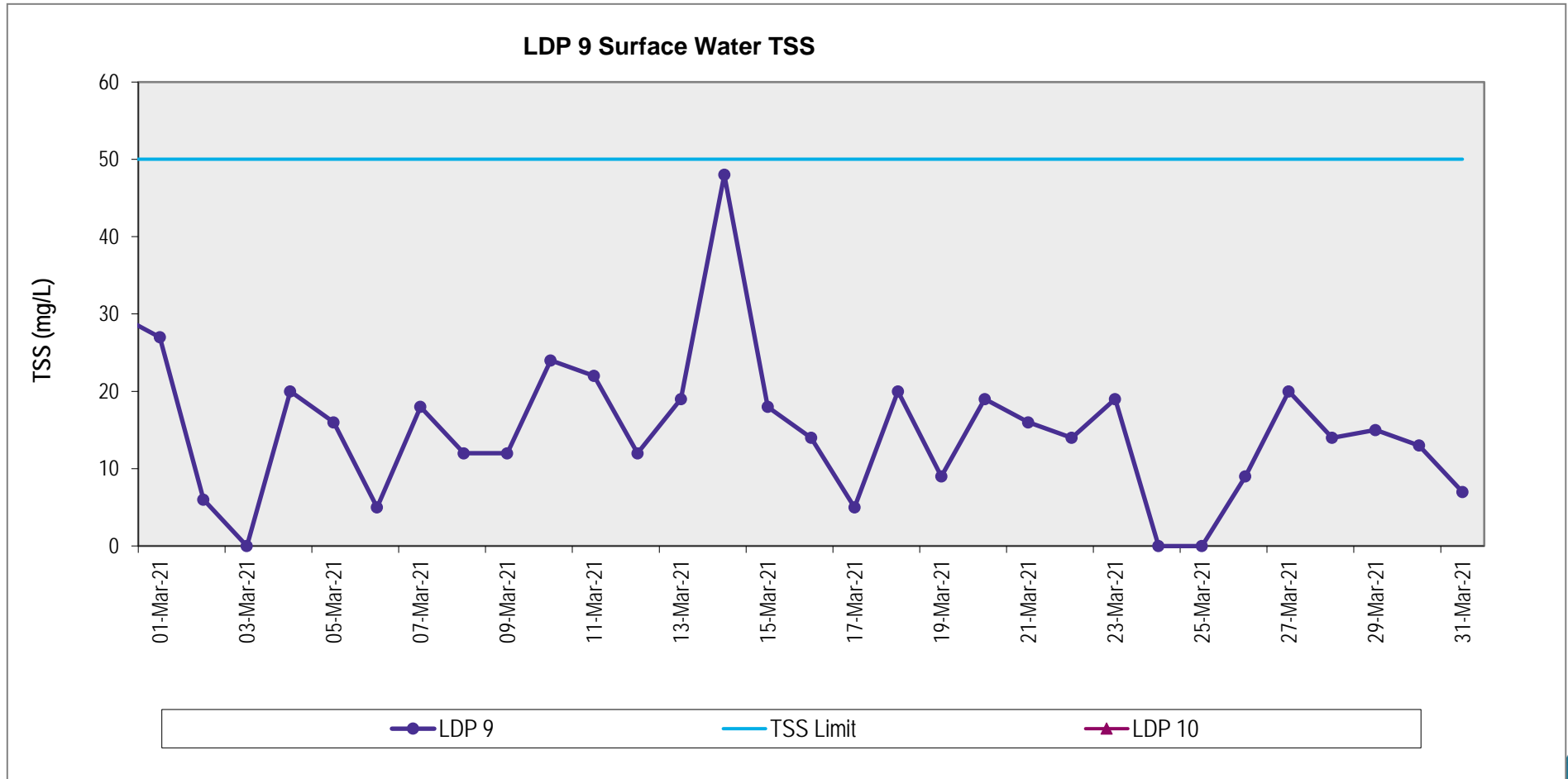
TSP Concentration



PM10 is Particulate Matter 10 mm or less in diameter; and – TSP is Total Suspended Particles

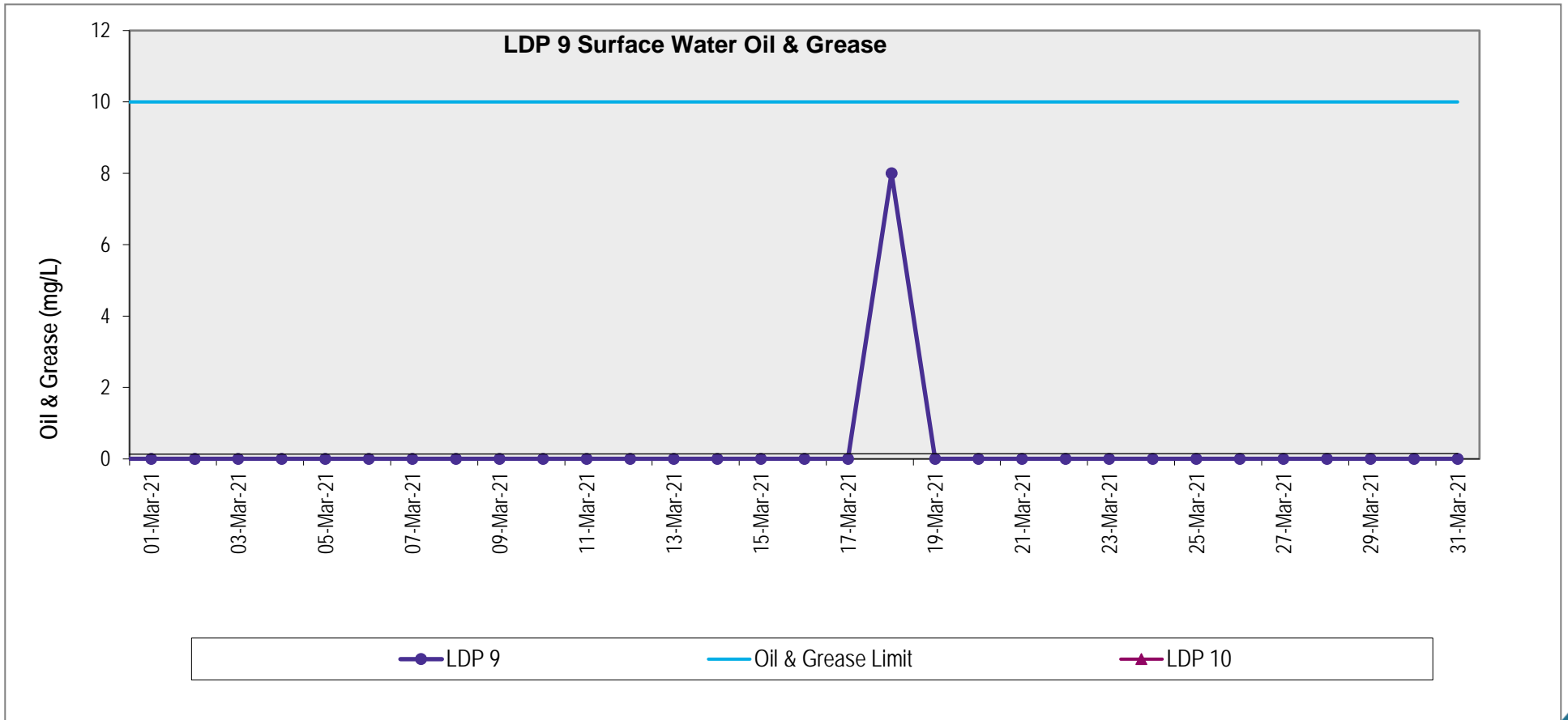
Monitoring & Environmental Performance

Water Quality Monitoring



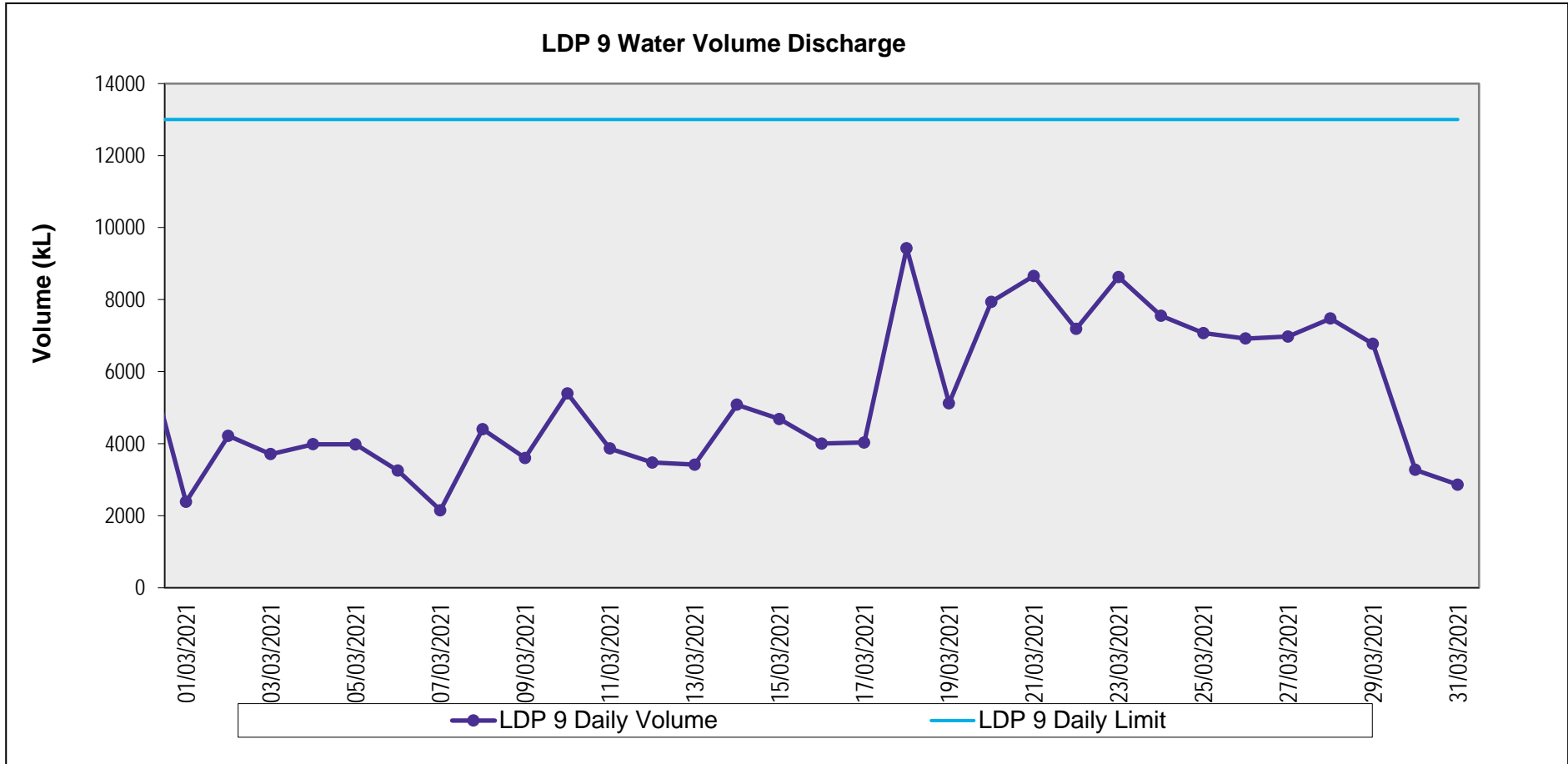
Monitoring & Environmental Performance

Water Quality Monitoring



Monitoring & Environmental Performance

Water Quality Monitoring



Community Complaints

- There were no complaints or enquiries received by Myuna during the Q4 reporting period.

Parameter	Apr-20	May-20	Jun-20	Jul-20	Aug-20	Sep-20	Oct-20	Nov-20	Dec-20	Jan-21	Feb-21	Mar-21	Total
Air													0
Water													0
Noise													0
Flora & Fauna													0
Subsidence													0
Waste													0
Blasting													0
Other													0
Monthly Total	0	0	0	0	0	0	0	0	0	0	0	0	
Total													0

Project Approval 10_0080

Proposed MOD 2

Background:

In order to ensure coal meets Eraring Power Stations specification the following Modification to Myuna's consent is being sought:

1. up to 1 million tonnes per annum (Mtpa) of Myuna Colliery coal to be trucked from Myuna Colliery's pit top to Cooranbong Entry Site (CES) via the public and private road networks – to be blended with coal from Mandalong Mine before transfer to Eraring Power Station by conveyor;
2. up to 0.2 Mtpa of Mandalong Mine coal to be backloaded from CES to Myuna Colliery's pit top – to be blended with coal from Myuna Colliery before transfer to Eraring Power Station by conveyor; and
3. construction and operation of a vehicle weighbridge at Myuna Colliery's pit top.

Project Approval 10_0080

Proposed MOD 2

Update – as per last meeting:

- Discussions with Origin Energy have, and continue to be undertaken to identify potential alternative solutions to the coal quality issues experienced at Myuna.
- Centennial are continuing to work through the issues raised in submissions and will take into consideration the findings of the road safety audit once the investigations have been completed.
- Further engagement with LMCC and RMS will be undertaken as part of the preparation of a response to the submissions.
- Centennial continues to investigate feasible alternatives to manage coal quality issues on site and avoid or minimise the requirement to putting coal trucks on the public road network.

The logo consists of a stylized white flame or leaf symbol to the left of the word "CENTENNIAL".

CENTENNIAL