

# Red Lake - a cornerstone asset being restored to a premier Canadian gold mine



**Location:** Ontario, Canada, approximately 535km north-west of Thunder Bay  
**Producing:** Gold  
**Management:** Owner operator  
**Site Management:** Kirsty Liddicoat - General Manager  
**Mine Site contact number:** +1 807 735 207  
**Acquisition:** Goldcorp assets 31 March 2020, Battle North Gold assets 19 May 2021

Located on the traditional lands of the Waubuskang and Lac Seul First Nations People.

## Restoring Red Lake to a premier Canadian gold mine — a cornerstone asset for Evolution

- High-grade asset situated on one of North America's highest-grade gold camps with outstanding exploration potential
- Tier one mining jurisdiction
- Mineral Resources of 11.1Moz and Ore Reserves of 2.9Moz (excluding Bateman Gold Project)
- Current life of mine plan of 13 years, expected to be materially extended
- Strategic acquisition of Battle North Gold:
  - New 650ktpa mill facility expandable to 900ktpa with minimal capital
  - Land package of 280km<sup>2</sup>+
  - Battle North Gold estimates reported for the Bateman Gold Project in accordance with Canadian National Instrument 43-101 standards:
    - Ore Reserve estimate of 3.56Mt grading 5.54g/t for 635koz Au<sup>3</sup>
    - Measured & Indicated Mineral Resource estimate (excluding Ore Reserves) of 1.71Mt grading 7.09g/t for 390koz Au<sup>3</sup>
    - Inferred Mineral Resource of 1.56Mt grading 6.83g/t for 343koz Au<sup>3</sup>
    - Estimates are subject to change when estimated by Evolution in accordance with the JORC Code 2012 and are planned to be reported in Evolution's Annual Mineral Resources and Ore Reserves Statement in February 2022
- Three-year plan to produce greater than 200kozpa, below US\$1,000/oz and a longer-term aspiration of 350kozpa, accelerated by the operational synergies of the Battle North Gold acquisition
- Three-year US\$100M investment phase to recapitalise the asset, increase mining rates, reduce costs, restore operation to profitable production
- Significant exploration upside – exploration expenditure of US\$50M over three years with a planned annual drilling rate of 100,000m
- Long term regional potential to grow the current resource base

## ➔ Key Facts

- 100% ownership
- **FY21:** 126.339oz
- **FY21 AISC:** A\$2,044/oz
- **FY22F:** 155,000–165,000oz
- **FY22 AISC:** A\$1,600–1,660/oz
- **TRIF:** 13.2<sup>1</sup> (12mma)
- **Red Lake Mineral Resources:** 47.81Mt at 7.19g/t Au for 11.1Moz<sup>2</sup>
- **Red Lake Ore Reserves:** 13.16Mt at 6.90g/t Au for 2.9Moz<sup>2</sup>
- **Land package** 737km<sup>2</sup>
- **Mine life:** 15+ years expected to materially extend
- **Mining method:** underground
- **Process method:** Campbell mill 800ktpa; Red Lake mill 300ktpa; Bateman mill 650ktpa (permitted to 450ktpa, expandable to 900ktpa)
- **Residential:** >800 + local jobs

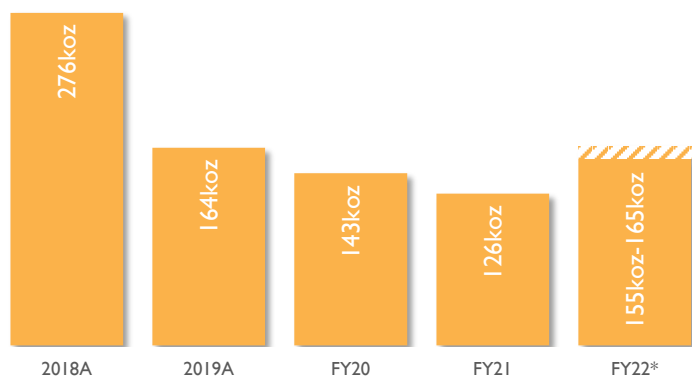
1. TRIF: Total recordable injury frequency. The frequency of total recordable injuries per million hours worked. Results above are based on a 12 month moving average to October 2021

2. See ASX release 17 February 2021 "Annual Mineral Resources and Ore Reserves Statement". Excludes the Bateman Gold Project resources and reserves which are planned to be estimated in accordance with the JORC Code 2012

3. For further details, see the Technical Report dated January 27, 2021 available under Battle North's profile at [www.sedar.com](http://www.sedar.com))

# Snapshot

## Gold production (oz)

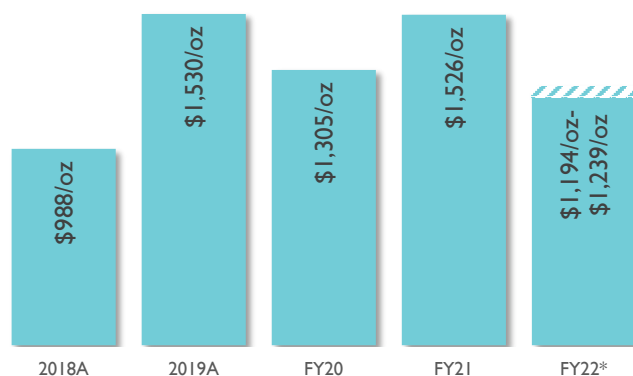


\* denotes guidance for FY22

Note: Evolution acquired Red Lake 31 Mar 2020

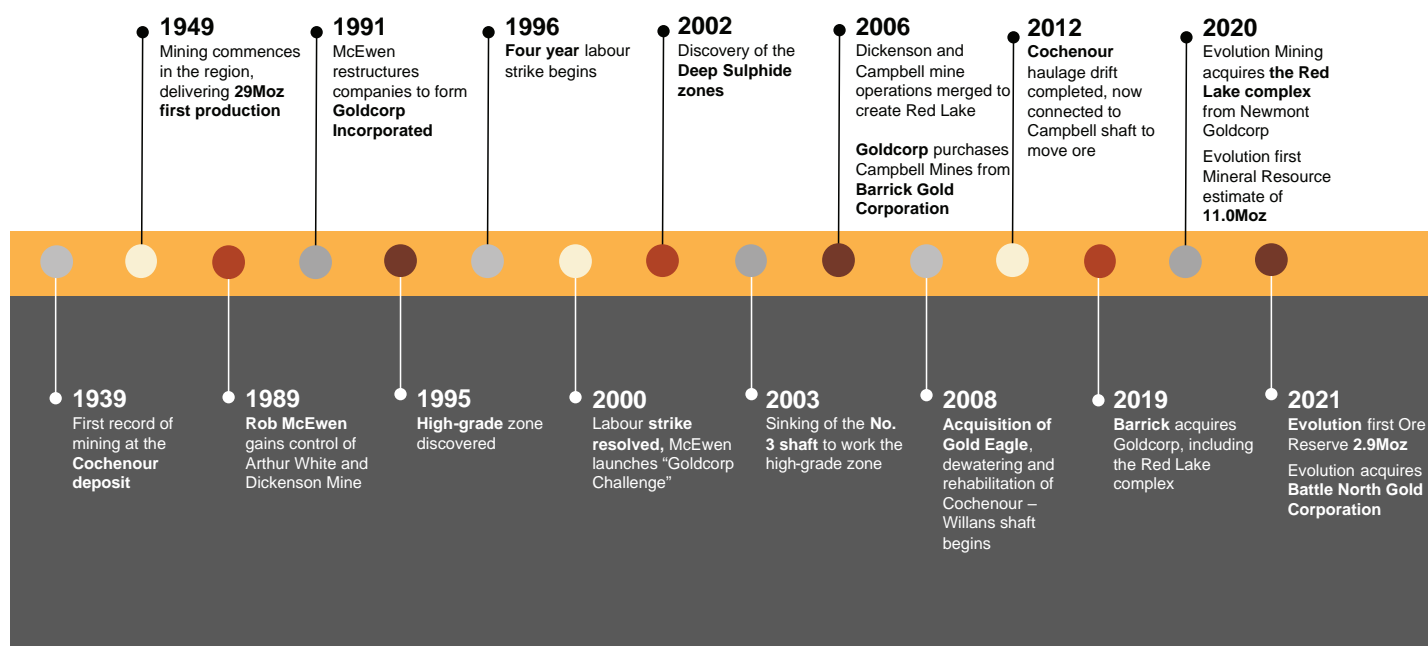
FY22 AISC IS A\$1,600-A\$1,660/oz. US\$ estimate based on FY21 AUD:USD exchange rate of US\$0.7466

## AISC (US\$/oz)



Historic performance data can be accessed at our [Interactive Analyst Centre™](#)

## History - Red Lake Evolution



## Mineral Resources (Dec 20)



## Ore Reserves (Dec 20)



(1) These estimates exclude the Bateman resources and reserves estimated in accordance with the Canadian NI 43-101 standards

# Sustainability

Sustainability is a strategic pillar for Evolution and we have published nine Sustainability Principles that provide the foundation for how we approach and integrate Sustainability into everything we do. These principles align with the United Nations Sustainable Development Goals and support our drive for improvement as we mature in our sustainability journey. The work we do on sustainability reflects our values driven approach to creating measurable value for our stakeholders through safe, reliable, low-cost gold production in an environmentally and socially responsible way.

Our sustainability efforts and higher levels of transparency have been recognised, with Evolution maintaining a rating of 'AA' in the MSCI ESG Ratings assessment for resilience to long term environmental, social and governance (ESG) risks, and ranked among the top five industry leaders globally for 'Health and Safety' and 'Business Ethics and Fraud' (FY20). We have also been recognised as a member of the Dow Jones Sustainability Index (DJSI) Australia, ranking Evolution in the top performing Australian mining companies for corporate sustainability in their annual assessment and are signatories to the United Nations Global Compact (UNGC).

Our [2021 Sustainability report](#) provided on our website describes our approach and performance in the areas of health and safety, environmental stewardship, helping our communities thrive, cultural heritage, innovation and the development of our people. Some of the highlights from Red Lake are provided below:

## Health and Safety

Integral to the sustainability of our business is the health, safety and wellbeing of our people. We have a strong health, safety and wellbeing culture with the ambition of being an injury free workplace. The Red Lake operation has made a significant step change in safety management, with more than a 60% increase in reporting and investigations to promote learning and improvement, with a focus on material and critical risk management, increased reporting, incident review and learning.

## Environment

We believe in striving beyond legislative compliance to achieve best practice and to build trust and meet the expectations of the communities in which we operate. We are focused on enhancing environmental stewardship through the implementation of our environmental standards and life of mine environmental management plans across all of the operation.

Climate-related risks including water security and extreme weather and health events remain a focus for RLO. The operation has a positive water security position, with raw water supply assessed as low risk. Extreme weather and pandemic response plans are in place to manage events such as COVID-19 incidents and Forest Fires. Cyanide destruction systems have been adopted to reduce the concentration of cyanide discharge which is also supported by certification to the International Cyanide Management Code last updated in 2021. For further information please visit our website.

## Community

Securing the support of communities in which we operate is core to our operation. Our focus remains on building trusted partnerships with our First Nation Partners in protecting their cultural heritage and supporting the delivery of their goals and that of other Community Groups. Collaboration Agreements are in place with the Wabauskang and Lac Seul First Nation Partners.

We partner with our communities to achieve meaningful outcomes and generate shared value. A local approach is critical to support local economic benefit by prioritising local procurement, creating local employment and facilitating local training opportunities.

Our strong community support in the RLO community includes:

- Support for the Shared Spirits (partnership with the First Nations Partners)
- Partnering with the Balmertown Fire Department including a donation of a Municipal Fire Truck in 2021 following the local forest fires
- Supporting a diverse workforce where all feel they belong including First Nation Peoples which make up 10% of the operation
- Supporting a predominantly (70%+) local workforce and local procurement initiatives
- Supporting Industry groups such as the Ontario Mining Association
- Investing in Community projects supporting education, environment, diversity, health, arts, culture and recreation and COVID recovery
- Operation of a recreational facility and sponsorships of youth and community programs



# Mining

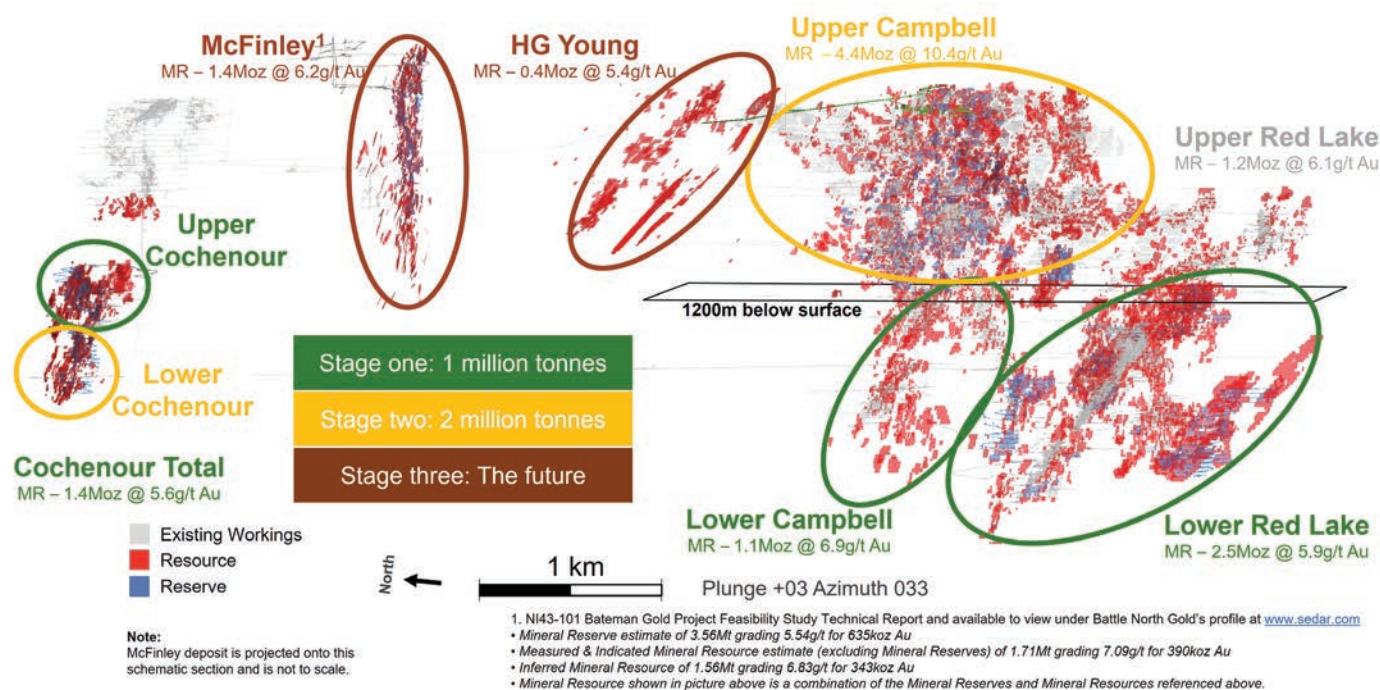
The Red Lake operation is an underground mine, operating in three different historical mining complexes (Red Lake, Campbell and Cochenour) and the recently acquired Bateman Gold Project which has consolidated the mining region and provided significant opportunities to maximise production and margins. Data integration and orebody re-modelling work will be undertaken and a new mine plan developed.

## Red Lake, Campbell and Cochenour

Red Lake, Campbell and Cochenour are interconnected underground. Access is through three shafts: Cochenour, Reid and No. 3 shafts. The primary mining method is sublevel open stoping, along with traditional and modified Avoca methods. Ore and waste is moved via internal passes, trams and ramp trucking. Ore is hoisted to surface through two production shafts, Reid and #3 Shaft. Ventilation is a push-pull system consisting of 4 intake and 5 exhaust fans and 15 underground booster fans.

Mining dates back as far as 1939 at the Cochenour deposit, and the current Red Lake Gold Mines organisation dates to the 2006 acquisition of the Campbell mine by Goldcorp.

Mining is carried out with a company-owned fleet of mining equipment, supplemented by contractor production drills.

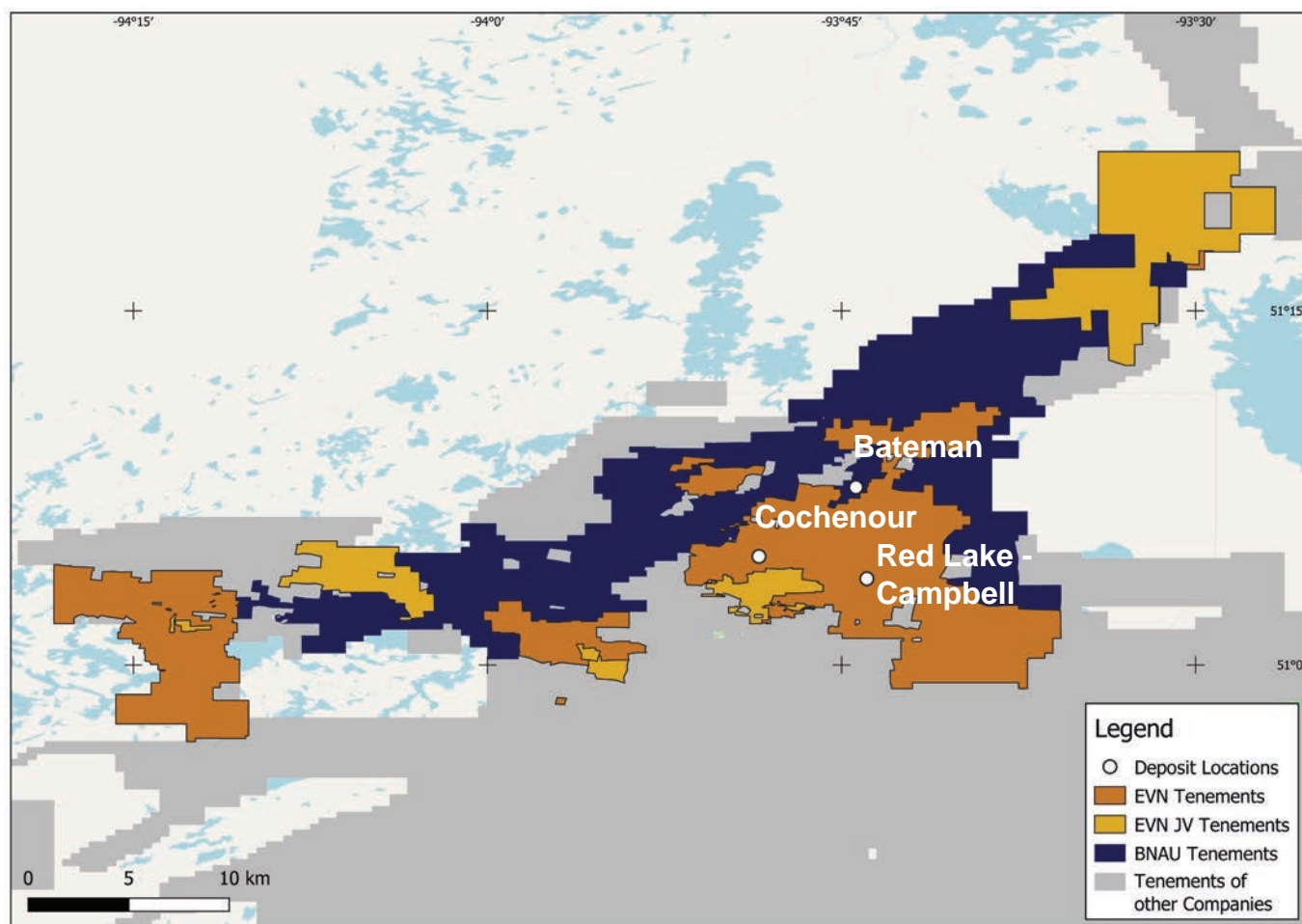


## Red Lake - the pathway to 350,000oz



# Bateman Gold Project

The Bateman Gold Project is an underground development project acquired from Battle North Gold in May 2021. It consists of the high-grade F2 Gold Deposit, more than 14,000m of underground development including a commissioned shaft to approximately 730m below surface, and surface infrastructure that includes a 650ktpa plant (permitted to 450ktpa), a tailings dam facility, electric power supply and substation, 200-person camp, earth-works and civil-works.



*Map of Red Lake district highlighting the tenements acquired through the Battle North transaction and the Bateman Project location*

## Geology

The Campbell-Red Lake and Bateman gold deposits are located within the Red Lake greenstone belt of the Superior Tectonic Province. This belt is host to one of Canada's largest and richest Archean gold deposits producing more than 26 million ounces of gold since the 1930s. The Red Lake Greenstone Belt is subdivided into several rock assemblages recording magmatic and sedimentary activities that occurred from 3.0 to 2.7 billion years before the present. The tholeiitic and komatiitic metabasalts of the Balmer Assemblage are the oldest volcanic rocks in the belt and are host to the major gold deposits in the Red Lake district, including the Campbell-Red Lake and Bateman deposits.

Gold mineralisation is mainly associated with silicification and sulphide minerals that replace carbonate veins, breccias and wall rock selvages. The carbonate veins and breccias, which are composed of ankerite  $\pm$  quartz, were formed before and/or in the early stage of penetrative ductile deformation, whereas silicification, sulphide replacement and gold mineralisation were coeval with deformation.



# Processing

The Campbell Mill uses conventional crushing and grinding which is followed by gravity concentration to recover free-milling gold. Refractory gold is recovered by flotation followed by pressure oxidation, neutralisation and CIL. Current capacity is 800ktpa and is planned to increase to 1.1Mtpa by 2023.

The Red Lake Mill was successfully commissioned in February 2021 (previously on care and maintenance) and has a current capacity of 300ktpa.

The new Bateman Mill (currently on car and maintenance) has a nameplate capacity of 650ktpa and is currently permitted to 450ktpa. It may be expandable to 900ktpa with minimal expenditure.

## Process flowsheet - Red Lake, Campbell and Battle North Mills

