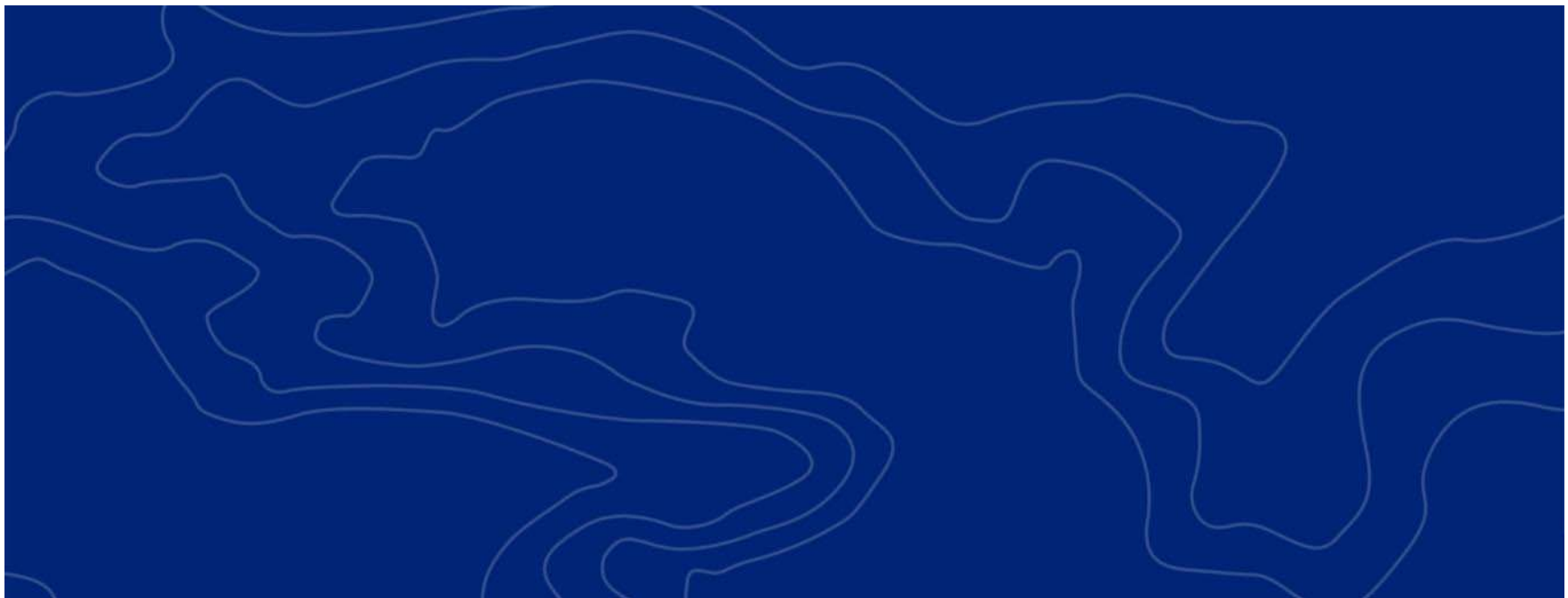




WOODSMITH PROJECT UPDATE

November 2020



Real Mining. Real People. Real Difference.

GLOBAL OPERATIONS, HEADQUARTERED IN THE UK

The Anglo-American purpose is to 'Re-imagine mining to improve people's lives'



GLOBAL FOOD SECURITY

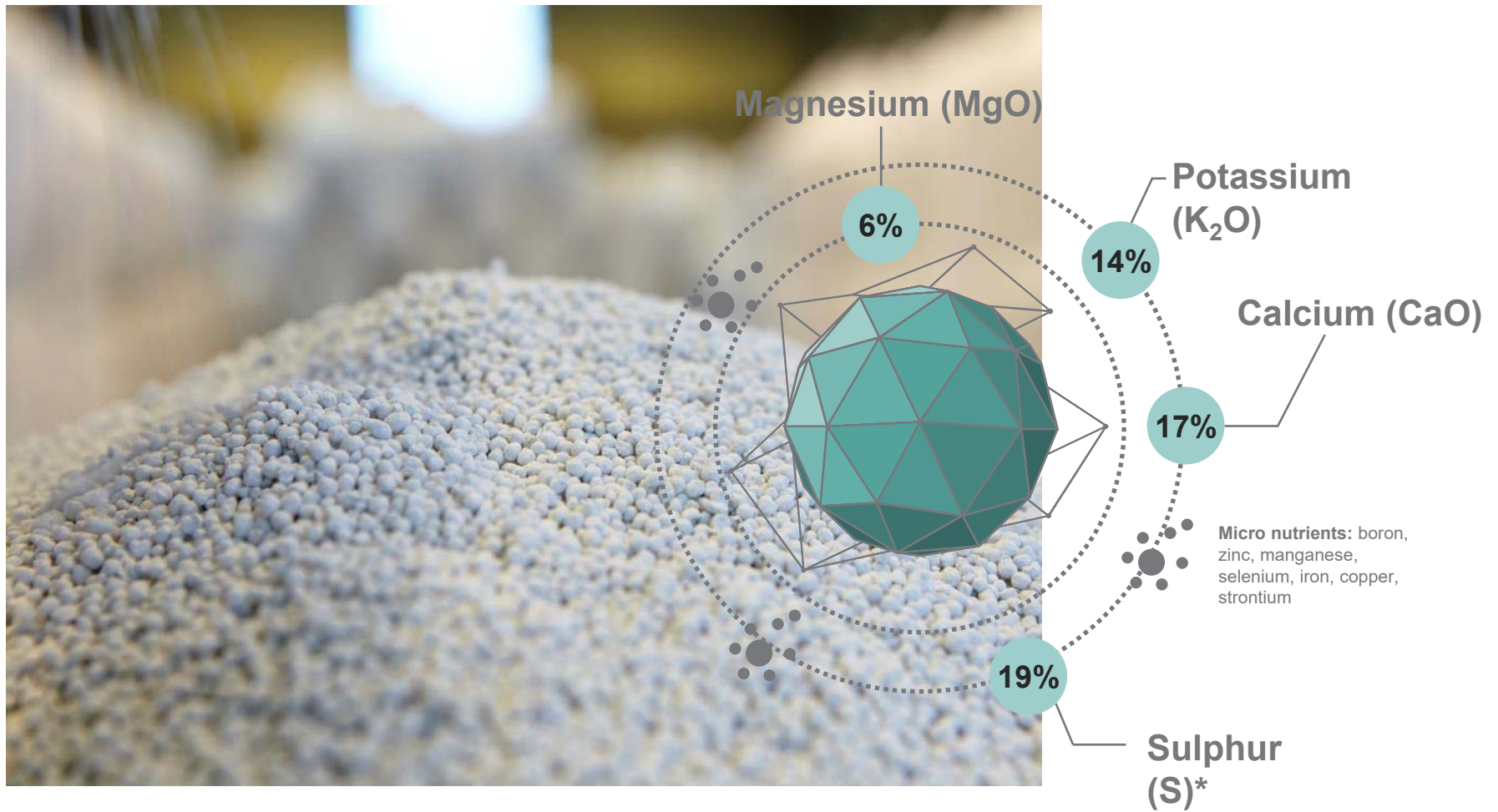


**BY 2050:
POPULATION INCREASE BY 33%
DEMAND FOR FOOD PRODUCTION 60%
ARABLE LAND REDUCE BY 15%**

WORLD'S LARGEST POLYHALITE RESOURCE

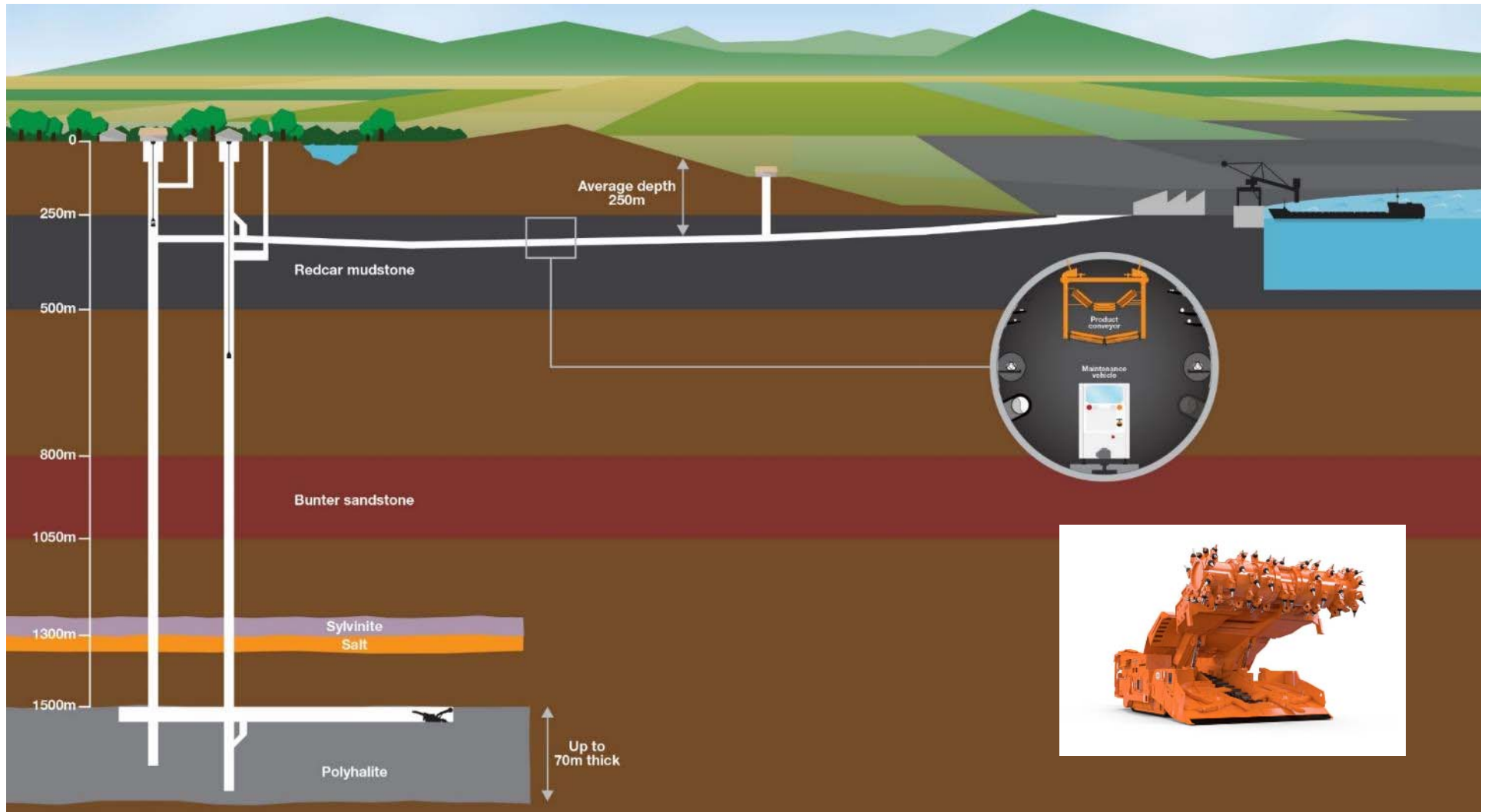


WHAT IS POLY4?



Notes: 1) Based on 90% polyhalite grade. Macro nutrients based on w/w5 and micro nutrients based on mg/kg; micro nutrients' content: B 169, Zn 1.9, Mn 3.1, Mo 0.3, Se>0.5, FE>0.5, Cu 1.1, Sr 1414. 2) POLY4 is the trademark name for polyhalite products from the Sirius Minerals polyhalite project in North Yorkshire, *48% SO₃.

DEVELOPMENT PLAN



DOVE'S NEST FARM



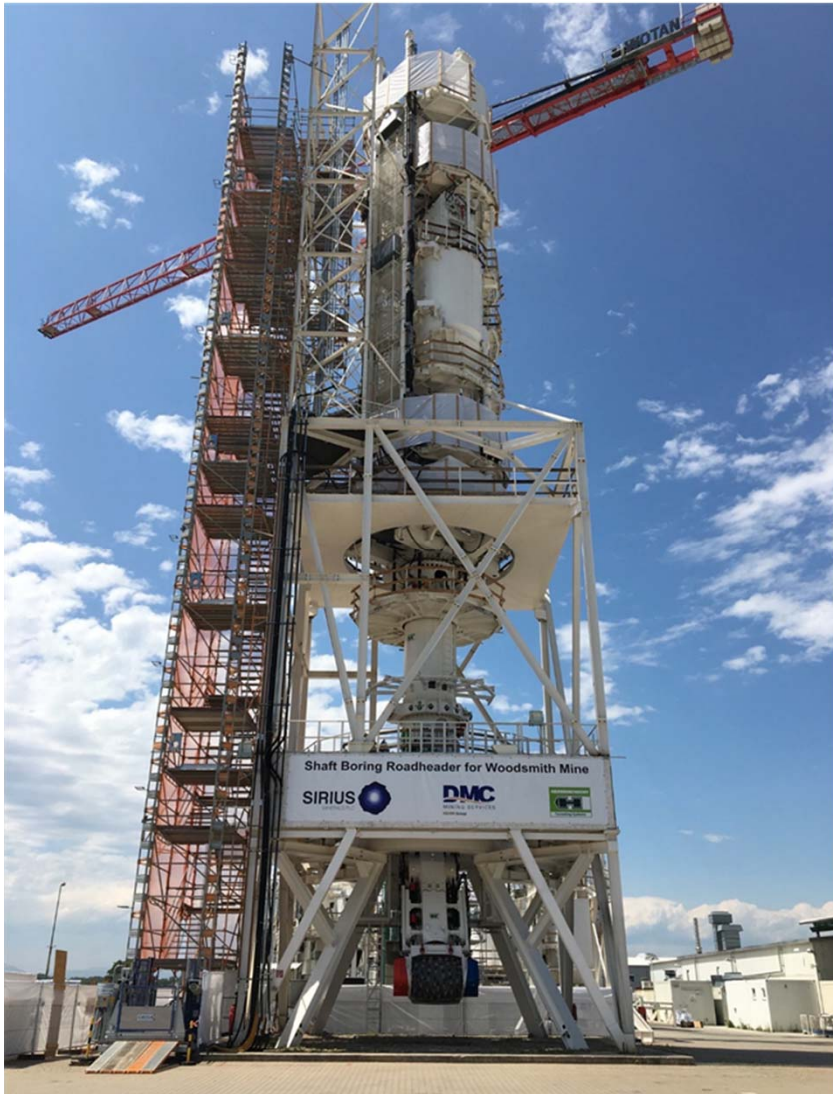
MINE IN PRODUCTION



WOODSMITH MINE



SBR FULLY ASSEMBLED AT SURFACE



SBR BEING LOWERED INTO SERVICE SHAFT



MINERAL TRANSPORT SYSTEM



LOCKWOOD BECK



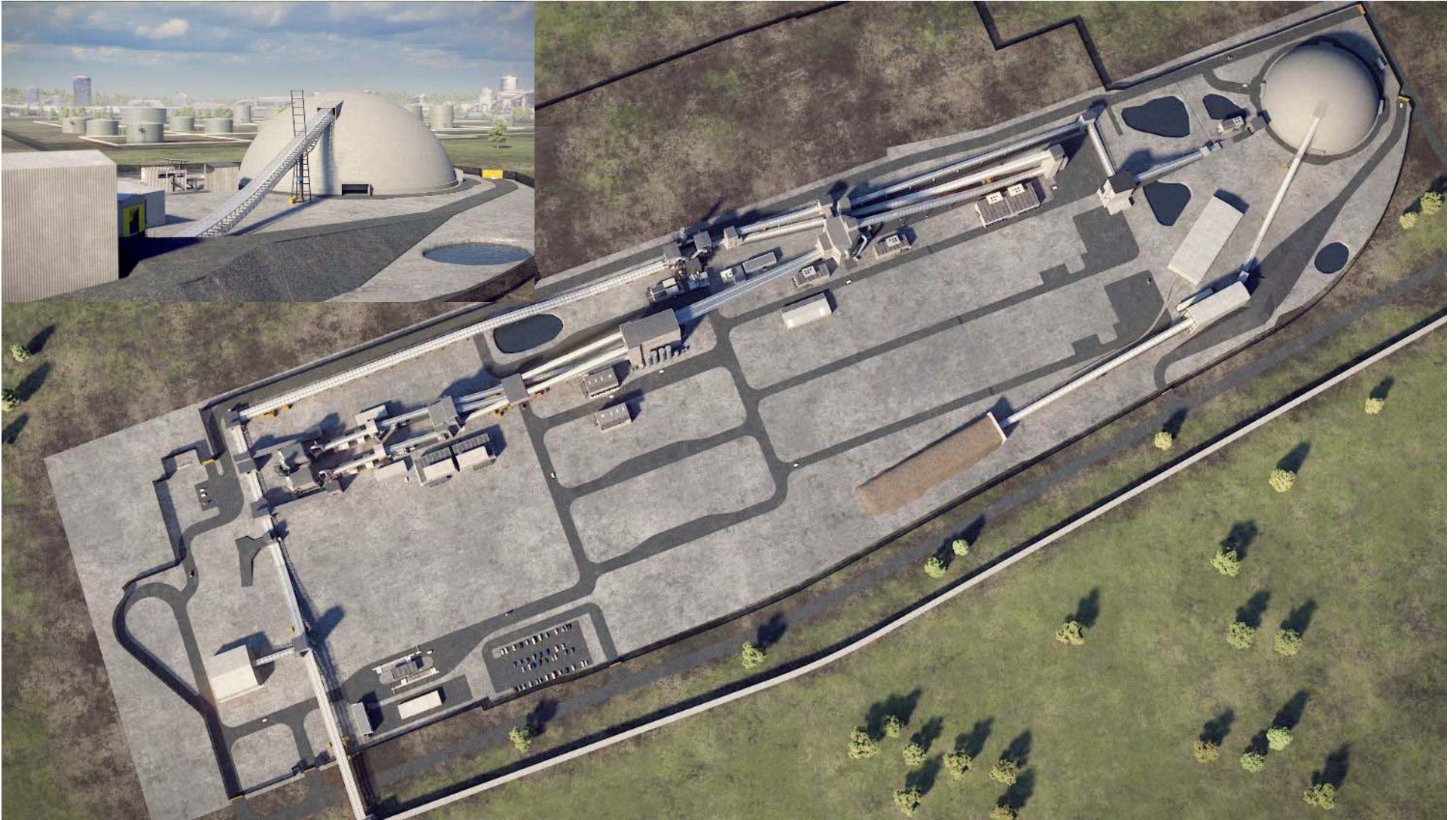
WILTON SITE



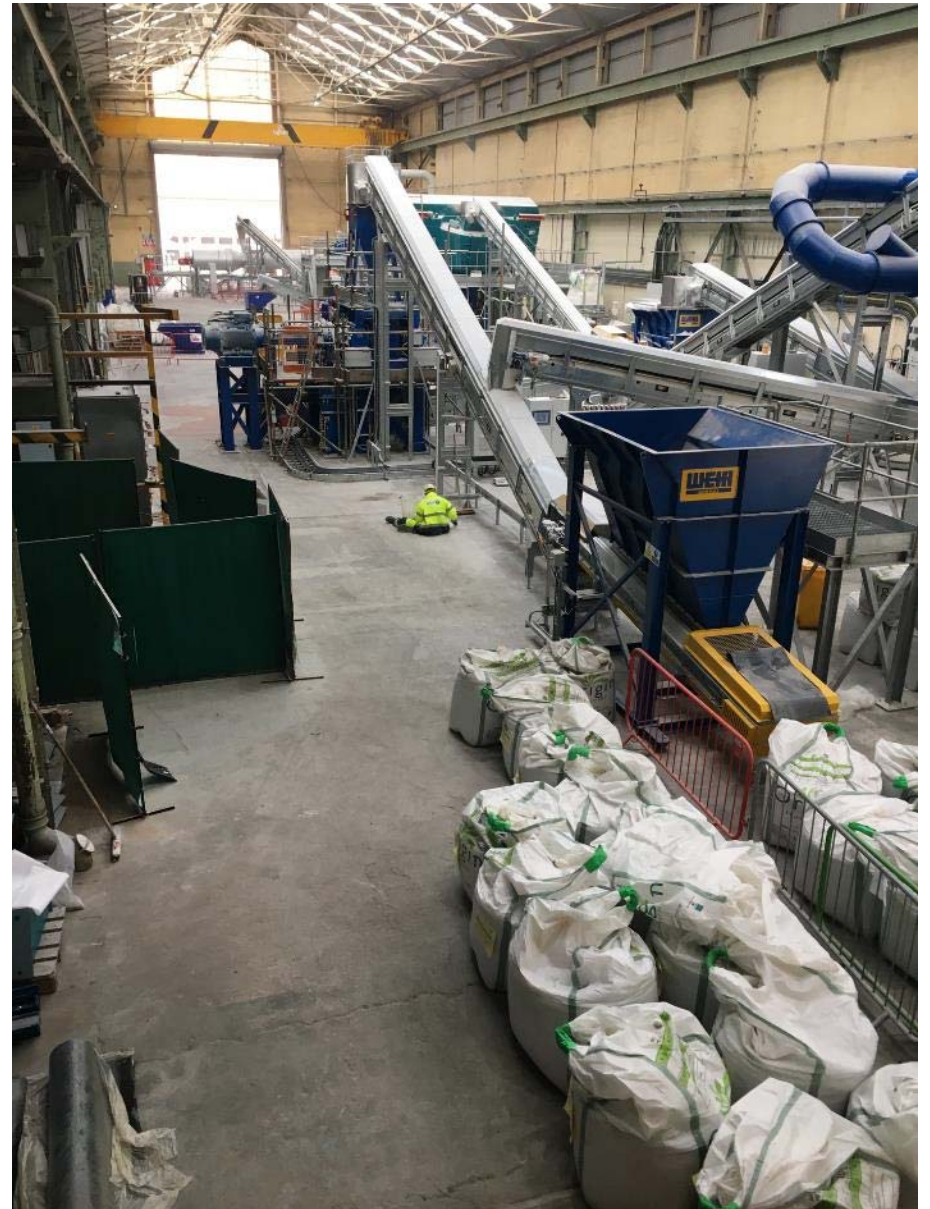
TUNNEL LINING MANUFACTURE



MATERIAL HANDLING FACILITY



R&D PLANT



PORT FACILITY



BOOSTING THE ECONOMY





THANK YOU