

Lefa



One of the largest gold producers in Guinea

The Lefa gold mine is located approximately 700 kilometres northeast of Conakry, the Capital of the Republic of Guinea. Lefa is one of the largest gold producer in the country.

Lefa is owned by Société Minière de Dinguiraye S.A. ("SMD"), in which Nordgold holds a controlling interest of 85% — with the remaining 15% held by the Guinean government.

Mining and processing production chain at Lefa is highly automated and include state-of-the art systems such as the WENCO Mining System, the LAS Fuel Management system, which ensures live fuel consumption control, along with the TAC 1000 cyanide control system.



Lefa is connected to an all-season road, located a short distance from a dedicated airstrip. The mine is located in the Sous-préfecture of Siguirini, in the Préfecture of Siguiri, which is part of the administrative region of Kankan.

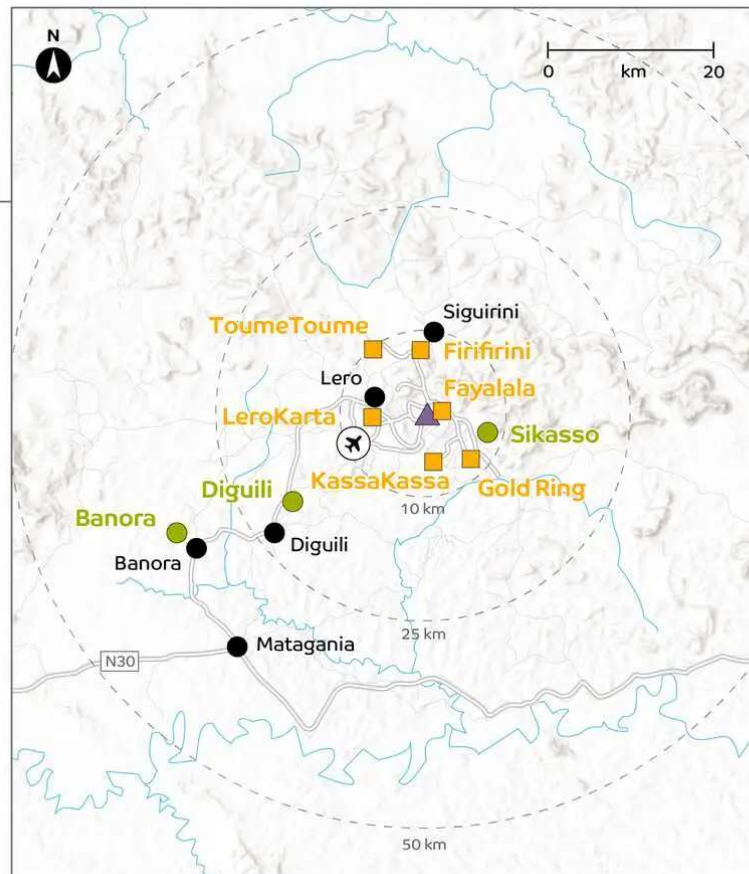


Approximate Distances

Conakry – Mataganina	523 km
Mataganina – Lero	50 km
Lero – Siguirini	19.5 km
Lero – LEFA plant	9 km
LeroKarta – LEFA plant	8 km
LEFA plant – Firifirini	7 km
LEFA plant – Gold Ring	7 km
LEFA plant – Sikasso	9 km

Legend

Production	Airports
Exploration	Railways
Processing Plant	Roads
Populated Places	Rivers



Lero-Karta Underground Mine

In 2023, Nordgold plans to commence an underground gold mine development at the Lefa mine. Lero-Karta will be the first underground gold mine in Guinea.

[Discover more](#)

Lefa supports more than 1,300 direct jobs

Most of our employees and contractors live and work at the mines in shifts (on a rotational basis).

Ensuring all employees and contractors benefit from a healthy, safe, and secure workplace, we strive to provide our employees with best accommodation, nutrition, healthcare and mental healthcare, protection, public services, transportation, and recreational facilities.

Please see our video to learn more about Lefa's leisure center Jacob Club.

Lefa News

16 September 2022

Nordgold to reforest 18 hectares of land in West Africa in 2022

24 August 2022

Nordgold Launches New Power Plant at its Lefa Gold Mine in Guinea

22 June 2022

Nordgold's Lefa mine helps to improve access to drinking water for local communities in Guinea

20 June 2022

Nordgold launches 5th wave of its Fast Track leadership programme

[More news](#)

Production Flow

Mining

The Lefa mine is a multi-deposit modern open pit operation which focusses on the development of two main open pits, Lero-Karta and Fayalala; as well as several smaller satellite pits.

The mine has its own mining fleet. Mine planning, scheduling, grade control, surveying and quality control are carried out on site.

Lefa uses the WENCO Mining System, which incorporates Fleet Management, Fleet Control and Mine Vision functionalities. This system is used to maximise the production capacity of the mine by optimising the efficiency of the mining fleet, as well as managing maintenance and servicing of all mine equipment.

Processing



The Lefa processing plant treats non-refractory oxidised saprolite and transitional and fresh saprock-hosted gold ore by crushing and grinding, then passing through conventional carbon-in-pulp ("CIP") circuits. As a result, Lefa produces doré on site.

Environment

At Lefa, the environmental management framework is being aligned with ISO 14001, international standard for Environmental Management Systems. The mine is targeting certification of conformance to this standard by 2022.

Environmental considerations have been a principal concern for us since the beginning of our operations in Guinea as exemplary environmental stewardship is a core element of the way Nordgold does business.

For instance, the mine is carrying out a comprehensive reforestation programme to fully rehabilitate over 80 hectares of land used for mining operations. As part of the programme, rehabilitated areas around the mine are first planted with grass, to which we then add acacia, kaya and other trees, including mango. The programme offers short-term economic and social gains such as additional employment for local residents, and longer-term benefits in the form of fully-grown fruit gardens. This will ensure the mine site can continue to serve local communities long after the mine's closure.

There are no specially protected territories nearby.

To learn more about reforestation programme of Nordgold's mines please watch our new film "Looking to the Future".

Supporting Guinea

Nordgold has invested almost US\$1.5 billion in Guinea since acquiring Lefa in 2010. We are now one of the country's largest gold producers and an important contributor to the country's economic and social development. In the years 2011 to 2021, Nordgold has paid almost US\$250 million in corporate taxes and royalties to the Guinean government.

As a major employer, we play an important role in contributing to the communities in which we work.

Lefa provides direct employment to more than 1,300 people, while a further 1000 indirect jobs are supported by the mine's activities.

In accordance with the Nordgold's policy to actively hire and promote the citizens of our host countries, 95% of Lefa employees are Guinean nationals. And, in 2020, Nordgold launched the West Africa Training Centre to further the development of technical skills for our highly capable regional workforce.

See more about our **West Africa Training Centre** in a film.

Corporate Social Responsibility

At Nordgold, corporate social responsibility is at the core of everything we do, and we recognise that local communities are one of our key stakeholders.

We proactively seek their support and involvement in our projects and are proud of the contribution that our operations make to the nations and communities in which we work.

Nordgold's concern for, and understanding of, the needs of local communities is an integral part of our approach to doing business wherever we operate.

Lefa operates a stakeholder engagement plan and contributes to various community programmes which provide regular local stakeholder engagement opportunities. Lefa operates a conflict prevention and management plan alongside a formal complaints-handling procedure.

Lefa also participates in a series of ongoing community investment initiatives in surrounding villages and towns. We focus our efforts on three critical areas: healthcare, education, and economic empowerment, both in local communities and as part of wider infrastructure projects.

[Discover more](#)

Become part of the Nordgold team

[Job list](#)

Contacts

Corporate Communications

+7 495 644 44 73

press@nordgold.com

Sustainable Development

+7 495 644 44 73

sustainability@nordgold.com

Human Resources

+7 495 644 44 73

job@nordgold.com

Procurement Department

info@nordgold.com

ABOUT US

[Mission & Values](#)

[Governance](#)

OPERATIONS

[Production](#)

[Development and exploration project](#)

History

INNOVATIONS

SUSTAINABILITY

Environment

Society

Governance

Reports & Policies

Sustainability Contacts

INVESTORS

Results and Reports

ESG

Contacts for investors

MEDIA

News

Social Media

Contacts for Media

CAREERS

SUPPLIERS

Become supplier

E-procurement

Connected links

Spare Parts Sale

CONTACTS

© 2023 Nordgold

[Accessibility policy](#)

[Disclaimer](#)

[Privacy Policy](#)

Site by [CreativePeople](#)