

# PRIMARY CRUSHER PLANT (STATION) – NAVACHAB GOLD MINE

SITE: GREENFIELDS

COMPANY

ADP NAMIBIA

LOCATION

AFRICA, NAMIBIA

UNIT PROCESS

FRONT END

COMMODITY

GOLD

CLIENT  
**QKR Namibia - Navachab**

MINE  
**Navachab Gold Mine**

SERVICES  
**Studies, E P C M**

ADP completed the Feasibility Study for the Navachab Gold Mine Primary Crusher Plant Project and was recently awarded the EPCM contract for the implementation phase.

The project entails the design, construction and commissioning of a Primary Crushing Station to feed the CIP and PCP Plants.

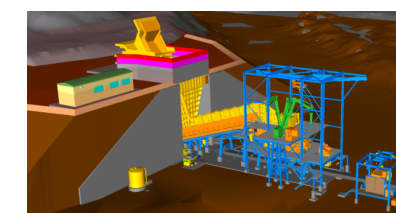
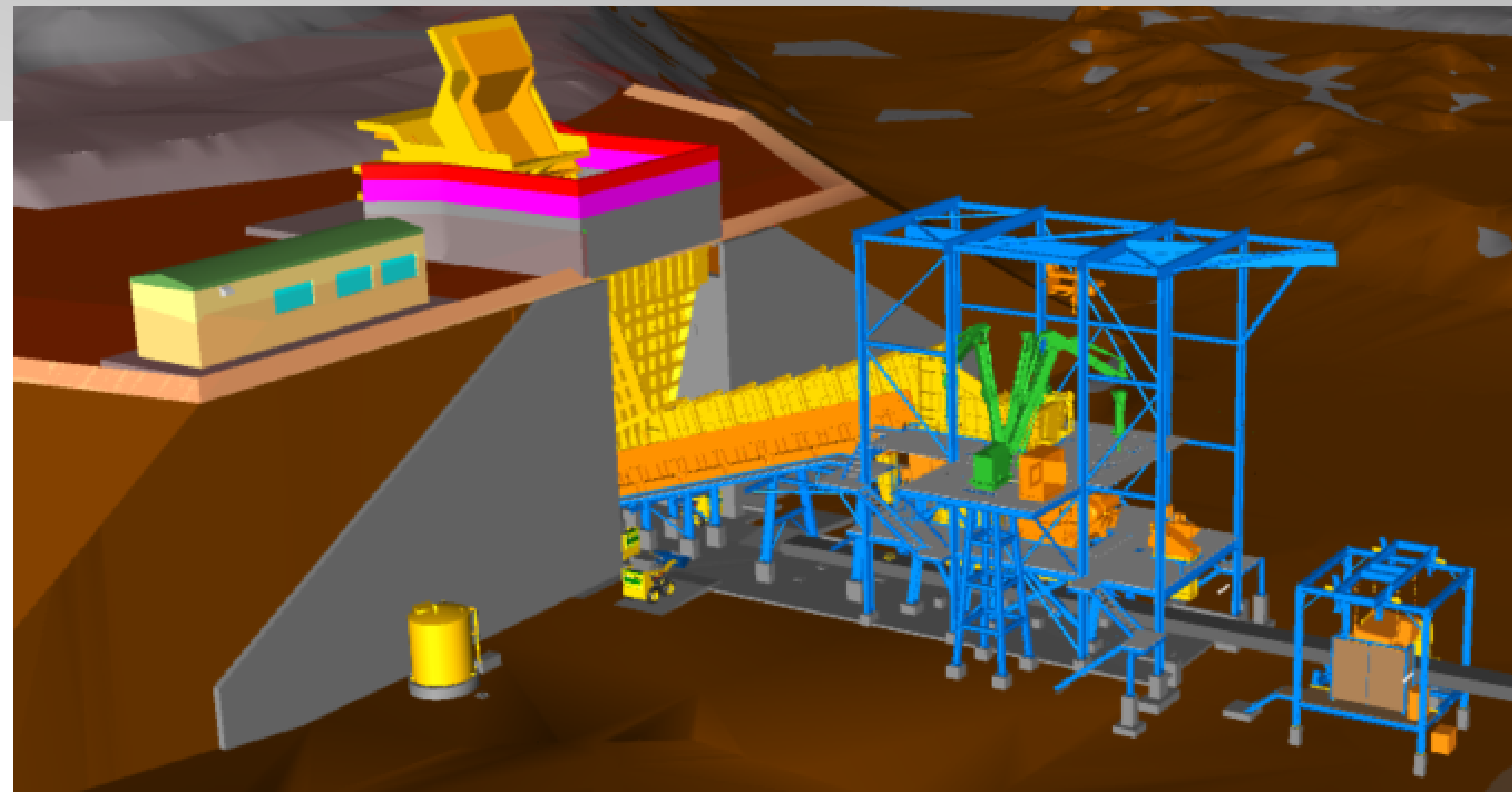
The 290t ROM bin will be designed to receive material from 100t haul trucks tipping onto a static grizzly.

ROM material is extracted from the bin via an apron feeder feeding onto a Vibrating Grizzly Feeder with oversize reporting to the Jaw Crusher.

The product conveyor will feed onto the existing overland conveyor feeder the comminution plant.

The project includes all tie-ins to existing facilities, multi-disciplinary engineering and design required to deliver the complete project scope, and overall project management.

The project timeline – March 2023 to October 2024.



## OFFICE LOCATIONS

### Head Office

ADP Marine & Modular  
Kholo Marine & Minerals  
Lycopodium Minerals Africa  
Underwater Mining Solutions

Cape Town, South Africa  
Tel: +27 21 521-9500

### ADP Kukama

Gaborone, Botswana  
Tel: +267 391-5418

### ADP Mozambique

Cape Town, South Africa  
Tel: +27 21 521-9500

### ADP Namibia

Oranjemund, Namibia  
Tel: +264 63 23-4317 / 4319  
Swakopmund & Windhoek, Namibia  
Tel: +264 81 478-1895

### Warehouse & Logistics

Johannesburg, South Africa  
Tel: +27 21 521 8860 / 27 79 374-4478