

Ontario Mining & Exploration

DIRECTORY AND RESOURCE GUIDE 2020

AN OFFICIAL PUBLICATION OF THE ONTARIO PROSPECTORS ASSOCIATION



Shebandowan and Hemlo:
Past, present, future

www.ontarioprospectors.com

Meet Your Discovery B-Field Team

GAP HeliSAM, Supracon SQUID & EMIT Digi Atlantis



In the Air... HeliSAM is electromagnetic exploration to detect conductors invisible to traditional Airborne platforms. Analogous to large, fixed-loop, B-field ground Transient EM, HeliSAM was principally designed to explore to great depths quickly, safely, cheaply, in any environment, any time of year. The method is essentially the elephant gun of AEM techniques, frequently used in first-pass greyfield exploration.



On the Ground... Supracon Low and High Temperature Jessy Deep SQUID are the worlds most sensitive B-Field electromagnetic survey sensors, capable of ultra low (<1Hz) electromagnetics for the deepest and most conductive targets on Earth.



Next to your Deposit... The EMIT Digi Atlantis points you in the right direction with a three-component Flux-Gate wireline electromagnetic probe designed for low noise and harsh conditions. Have Discovery Geophysics and EMIT Digi Atlantis bring world-class BHEM to your project.



World Class District to Deposit Scale Electromagnetic Exploration



International
Airborne Geophysics
Safety Association

Exploration is our Business
and Safety our Culture
Work Safe out there.

www.discogeo.com

1-306-249-4422

info@discogeo.com

FOREST HELICOPTERS

Providing quality competitive service that stresses safety, dependability and competence.



Specializing in:

- precision drill moves
- staking, sampling and exploration
- aerial photography and surveying
- forestry support
- speciality external load operations
- aerial construction
- powerline support
- fixed float water operations
- remote location/ camp



Give us a call
to find out more!

422 Anderson Road
Kenora ON, P9N 0E7

Toll Free: 1-888-764-4001
Local: 1-807-548-5647

info@foresthelicopters.com
www.foresthelicopters.com

**SAFETY. QUALITY.
PEOPLE. EQUIPMENT.**



**AT OUR
CORE**

CONETEC

CONETEC.COM
conetecON@conetec.com



MUDBAYDRILLING.COM
info@mudbaydrilling.com

TABLE OF CONTENTS

- 6** Message from the Ontario Prospectors Association
Executive Director, Garry Clark
- 8** Message from the Minister of Energy, Northern
Development and Mines, Greg Rickford
- 12** Ontario Mining Operations 2020
- 14** Shebandowan and Hemlo: Past, Present, Future
- 22** Gold Mines
- 29** Other Metal Mines
- 32** Diamond Mines
- 33** Major Industrial Mineral Producers
- 34** Gemstone and Mineral Specimen Mines and Quarries
- 36** Lime and Specialty Limestone Producers
- 37** Trap Rock Producers
- 38** Brick Producers
- 38** Cement Producers' Quarries
- 39** Dimension Stone and Specialty Aggregate Producers
- 43** Corporate Offices of Companies with
Metal Mines in Ontario
- 44** Companies Actively Exploring in Ontario
- 49** Advanced Mineral Projects in Ontario 2020
- 50** Exploring Under Conductive Clay Cover:
Galvanic HeliSAM Case Studies from Australia and
Canada Using the Magnetometric Conductivity Technique
- 54** Index to Advertisers
- 56** Ontario Prospectors Exploration Showcase:
"Exploration Finds Mines"

Published by:

DEL Communications Inc.

www.delcommunications.com

President and CEO:

DAVID LANGSTAFF

Managing Editor:

CINDY CHAN

cindy@delcommunications.com

Sales Manager:

DAYNA OULION

dayna@delcommunications.com

Advertising Sales:

ROSS JAMES, NICK MILLER,

DAN ROBERTS

Production services provided by:

S.G. Bennett Marketing Services

Art Director:

KATHY CABLE

Advertising Art:

DAVE BAMBURAK

Cover photo courtesy of Dorothy Campbell.

© Copyright 2020

*Ontario Mining and Exploration Directory
and Resource Guide*

All rights reserved. The contents of this publication may not be reproduced by any means, in whole or in part, without the prior written consent of the publisher.

While every effort has been made to ensure the accuracy of the information contained in and the reliability of the source, the publisher in no way guarantees nor warrants the information and is not responsible for errors, omissions, or statements made by advertisers.

Articles and advertisements in this publication are not solicitations to buy, hold or sell specific securities; they are for information only.

Opinions and recommendations made by contributors or advertisers are not necessarily those of the publisher, its directors, officers or employees. Investors should be aware that risk is associated with any security, strategy or investment and are advised to seek the counsel of a competent investment advisor before making any investment, or utilizing any information contained in this publication.

Subscription, advertising and circulation information can be obtained from the publisher.

Publications mail agreement #40934510

Return undeliverable

Canadian addresses to:

DEL Communications Inc.

Suite 300, 6 Roslyn Road

Winnipeg, Manitoba, Canada R3L 0G5

Email: david@delcommunications.com



Communications Inc.

PRINTED IN CANADA 02/2020



Leading provider of **analytical geochemistry** services



QUALITY

Unrivalled consistency of accuracy and precision

Superior quality management system

Commitment to meet or exceed international accreditation standards



INNOVATION

Dedication to research and development

CoreViewer™ links to Leapfrog™ and Vulcan™

Focused on industry appropriate solutions



TECHNOLOGY

Cutting edge solutions

Webtrieve™
Access timely data through the convenience of a secure website

Control Alerts app

CoreViewer™
Core image management



SERVICE

Consistent timely reliable data

World class geochemical technical support

Expert client services

+1 705 560 7225 • ClientServicesECan@alsglobal.com

alsglobal.com/geochemistry



- ✓ OPTIMIZE BOREHOLE PLANNING
- ✓ IMPROVE CORE DRILLING ACCURACY
- ✓ REDUCE ENVIRONMENTAL IMPACT
- ✓ REDUCE DRILLING TIME AND COST

(705) - 524 - 6222

WWW.TECHDIRECTIONAL.COM
INFO@TECHDIRECTIONAL.COM

868 FALCONBRIDGE RD.
UNIT 1 / SUDBURY, ONTARIO
CANADA

**SIDETRACKING
WITHOUT
CEMENT PLUGS
OR WEDGES**

4 DAYS SAVED
PER BRANCH

12 DAYS SAVED
PER BRANCH

**HIGH
ACCURACY**

24 DAYS SAVED
PER BRANCH

**MULTIPLE
BRANCHES**

**IMPROVED
GEOLOGICAL
INFORMATION**

24 DAYS SAVED
PER BRANCH

**EXTREME DEEP
HOLD CAPACITY
(3000 M+)**





Message from the Ontario Prospectors Association Executive Director, Garry Clark

ONTARIO PROSPECTORS EXPLORATION SHOWCASE (OPES)

"Exploration finds Mines!"

April 7 and 8, 2020

This year, the Ontario Prospectors Association is once again delivering the OPES at the Valhalla Inn in Thunder Bay. The year has been a test of explorers in Ontario. Raising funds has been extremely challenging for some and easy for others.

The OPES will have over 80 booths and posters, 12 core shacks and more than 30 speakers. Last year, we had 500-plus participants over the two days.

Speakers this year include Great Bear Resources, Warrior Gold, Musselwhite Mine, Noront, Manitou Gold, Wesdome, Alamos and Metals Creek.



OPA activities

Minister's Mining Committee

The OPA has a seat at the committee table to help inform the Minister on issues that affect the explorers of the province. This committee consists of explorers and miners from large and small companies. To date, the meetings have been very informative and well-attended by the provincial ministers involved in mining and various deputy and assistant deputy ministers.

On Sept. 10, there was a meeting of the Minister's Mining Committee. This was the first meeting since the inaugural meeting at PDAC.

The agenda included:

- Flow-through increase write-offs in Ontario;
- Support for explorers;
- Resource revenue sharing and consultation.

1. There was good take-up of the concept that Ontario needs to be on a level playing field with the other provinces to be able to retain explorers. I think the Minister is grasping the idea that increased the flow-through write-off provincially will retain funds in Ontario.

2. The JEAP funding model was reviewed and the Ministry has shown that for every dollar that was rebated, 18 industry dollars were leveraged. The Minister spoke of re-tooling NOHFC and looking at ways to create a new program to support industry.

3. Resource revenue sharing was spoken of in context of costs and potential proximal effected communities (including municipalities) to mines sharing more than distant communities. Consultation was discussed with the idea of dealing with the communities that want to talk similar with the execution of the direction being taken for the north south road to Ring of Fire. Also, there was discussion of template agreements for MOUs as we had started with discussion with Wabun Tribal Council.

The OPA has been working with Save Canadian Mining's Terry Lynch. Save Canadian Mining is a movement to return market rules to the fair and transparent standard that helped deliver prosperity for over 142 years. Together, we can save Canadian mining.

In 2012, IIROC and CSA removed a trading rule known as the "tick test", which restricted short-selling to neutral or sales to positive price changes at the time of the sale. These changes were applied not only to the main listing venue of TSX Venture Exchange, but are also equally applied across all Canadian trading venues, of which there are 14 today, reducing TSX Venture's ability to effect any change. Since removal of the tick test, the Canadian markets have evolved, and there now exists a dynamic where short-selling activities, high-frequency trading and algorithms are exploiting the lack of a tick test to the detriment of Canada's junior markets. We call on CSA and IIROC to evaluate re-instituting the tick test. ●

Garry Clark

1 (866) 622-3284

gjclark@ontarioprospectors.com

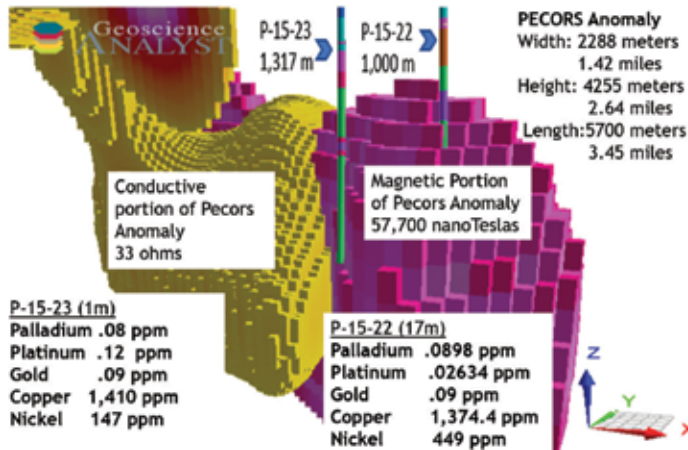


www.montororesources.com

Ph: 604-683-6648

International **Montoro**
RESOURCES INC

TSX.V:IMT



Exploring
for the Next Major
Nickel, Copper,
PGE's Deposit near
Sudbury, Ontario.

Pecors Anomaly

Serpent River Property - Elliot Lake, Ont.



EXPERT
GEOPHYSICS
from innovations to discoveries

MobileMT – the most advanced airborne
EM technology for your exploration success

T: (+1) 647-402-8436

E: info@expertgeophysics.com

www.expertgeophysics.com



Safety Training & Industrial Services

Come visit
us at our
booth at
PDAC Trade
Show North!

- WORKING AT HEIGHTS (CPO-APPROVED)
- PEWP, FORKLIFT
- BASIC RIGGING FUNDAMENTALS
- SURFACE COMMON CORE
- TRAINING MANAGEMENT SERVICES
- CONFINED SPACE RESCUE SERVICES AND TRAINING



NATT
Safety Services
nattsafety.com

1.866.244.3334

Northern
SafetySupply
northernsafety.com

705.682.3362 X600



Message from the Minister of Energy, Northern Development and Mines, Greg Rickford

Ontario's government is working with the mineral sector to create jobs and bring economic prosperity to every corner of the province. We are doing this by keeping taxes and power rates low and cutting unnecessary, costly red tape.

We are optimistic about the future of mining and mineral exploration in Ontario. Our government continues to work hard – alongside our partners at the Ontario Prospectors Association (OPA) – to ensure the interests of prospectors and the mineral exploration industry have a strong voice in Ontario, across Canada and around the world.

Our Mining Working Group, which includes leaders from mining and exploration companies, prospectors and Indigenous business organizations, is focused on address-

ing key issues facing Ontario's mining and exploration sector, while identifying opportunities to ensure future growth, competitiveness and prosperity.

That's why regulatory and legislative changes to Ontario's Mining Act are also part of our government's commitment to cut red tape and foster innovation and investment in the sector.

We have good reason to continue driving this change. As a leader in mineral exploration and production, Ontario is among the top 10 jurisdictions in the world for exploration spending. There are about 150 companies actively exploring more than 200 projects in the province. Exploration spending in Ontario was \$583 million in 2018, an eight per cent increase over 2017.



XRF designed to rock your world

Discover the Niton XL5 XRF Analyzer

Fast: Determine real-time geochem data in seconds
Light: Compact geometry and lightweight at 1.3 kg
Powerful: 5W x-ray tube returns lab quality results
Versatile: Analysis from exploration to processing
Connected: Wirelessly transmit data from device to PC

Learn more at thermofisher.com/XL5
Sales, Service Repair and Recalibrations
in Canada with Elemental Controls


866-544-9974 www.elementalcontrols.com

NEW!
MINING &
SOIL MODES

Thermo Scientific™
Niton™ XL5 XRF Analyzer

ThermoFisher
SCIENTIFIC

© 2017 ThermoFisher Scientific Inc. All rights reserved. All trademarks are the property of ThermoFisher Scientific and its subsidiaries unless otherwise specified. 0617



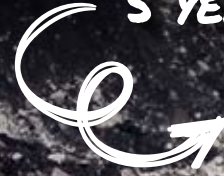
DRILL RIG OVERHAULS
PARTS SALES
COMPONENT SALES AND REPAIRS
FIELD SERVICE AND REPAIRS

ODYSSEY
FLUID POWER

138 Progress Road
North Bay, ON P1A 0B9
705.707.1780
www.odysseyfluidpower.com

YOUR BUSINESS NEEDS MORE THAN A BUILDING

PLAN TO RELOCATE
TRUCK SHOP IN
5 YEARS



5 YEAR FACILITY PLAN

- YR 1 - TRUCK SHOP + PARTS WAREHOUSE
- YR 2 - PRIMARY CRUSHER +
STOCKPILE FACILITIES
- YR 5 - EXPAND WAREHOUSE

SITE TO BE
DECOMMISSIONED
IN 15 YEARS

- TEMPORARY DESIGN
WITH FUTURE
RELOCATION IN MIND

REMOTE SITE

- QUICK ACCESS TO PARTS
+ MAINT. REQUIRED



FIND OUT HOW A **ShelterSolution**
IS MORE THAN A BUILDING

NORSEMANSTRUCTURES.COM



**NORSEMAN
STRUCTURES**

Fiercely Reliable™

With a **ShelterSolution**, what you don't see matters most. It's a process, not just a building. One that reveals your project needs, underlying business drivers, and the preferences of your team. It's an intelligently designed solution, built with you, that enhances your operations.



HEAVY DUTY TRUCK SHOP



AMMONIUM NITRATE STORAGE

As Canada's No. 1 mineral producer, Ontario generated \$10.1 billion worth of minerals in 2018. The mineral wealth and associated economic activities are a fundamental building block and key source of livelihood for many communities in Northern Ontario. The mining industry creates more than 26,000 direct jobs and approximately 50,000 indirect jobs in mineral manufacturing and processing in Ontario.

The province's abundant mineral resources, stable financial climate and competitive mining tax regime attracts a wealth of exploration and mining companies, including some of the world's largest and most accomplished, such as Barrick, Newmont, Glencore, Kirkland Lake Gold and Vale.

Since June 2018, several new mines have opened across Ontario. Newmont opened Borden gold mine in Chapleau, the world's first all-electric underground gold mine, and the Cochenour gold mine in Red Lake. Harte Gold opened the Sugar Zone gold mine near White River.

In addition, Kirkland Lake Gold, Newmont, Vale, Alamos, Glencore and Pure Gold are all advancing mine expansion or new mine construction projects across Ontario. Promising exploration projects continue to advance across the province as well, such as Great Bear's Dixie gold project, Frontier Lithium's PAK lithium project, Greenstone Gold's Hardrock gold project and Moneta Porcupine's Golden Highway gold project.

Our government will continue to work hard to increase competitiveness and support an attractive investment climate. The mining sector is an important contributor to the local and provincial economy, creates good paying jobs and a better quality of life for all families across the province.

By working together, we will continue to send a clear message to the world that Ontario is open for business and open for jobs. ●

The Honourable Greg Rickford

Minister of Energy, Northern Development and Mines



CANADIAN EXPLORATION SERVICES LTD

Covering the entire exploration process.

Proudly based in Northern Ontario.

877.504.2345 | info@cxsltd.com | www.cxsltd.com

KOREX
CORE RACKS & BOXES

PHONE: 807-854-2283
FAX: 807-854-0554
EMAIL: stephane@gotwoodcastle.ca

124 Arena Rd.
Geraldton, ON
P0T 1M0

CUSTOM WORK • INSTALLATION
FENCING • SUPPLIES • DELIVERY

castle
building centres



SUPERIOR
EXPLORATION, ADVENTURE & CLIMBING CO. LTD.

Ground VLF Surveys & Prospecting
Data Processing, Interpretation & Modeling
Historical VLF Data Processing & Modeling

P: 705.946.6054 | C: 705.943-9399
E: yvlf.ca@gmail.com | W: www.yvlf.ca





January 20-23, 2020

Vancouver Convention Centre East

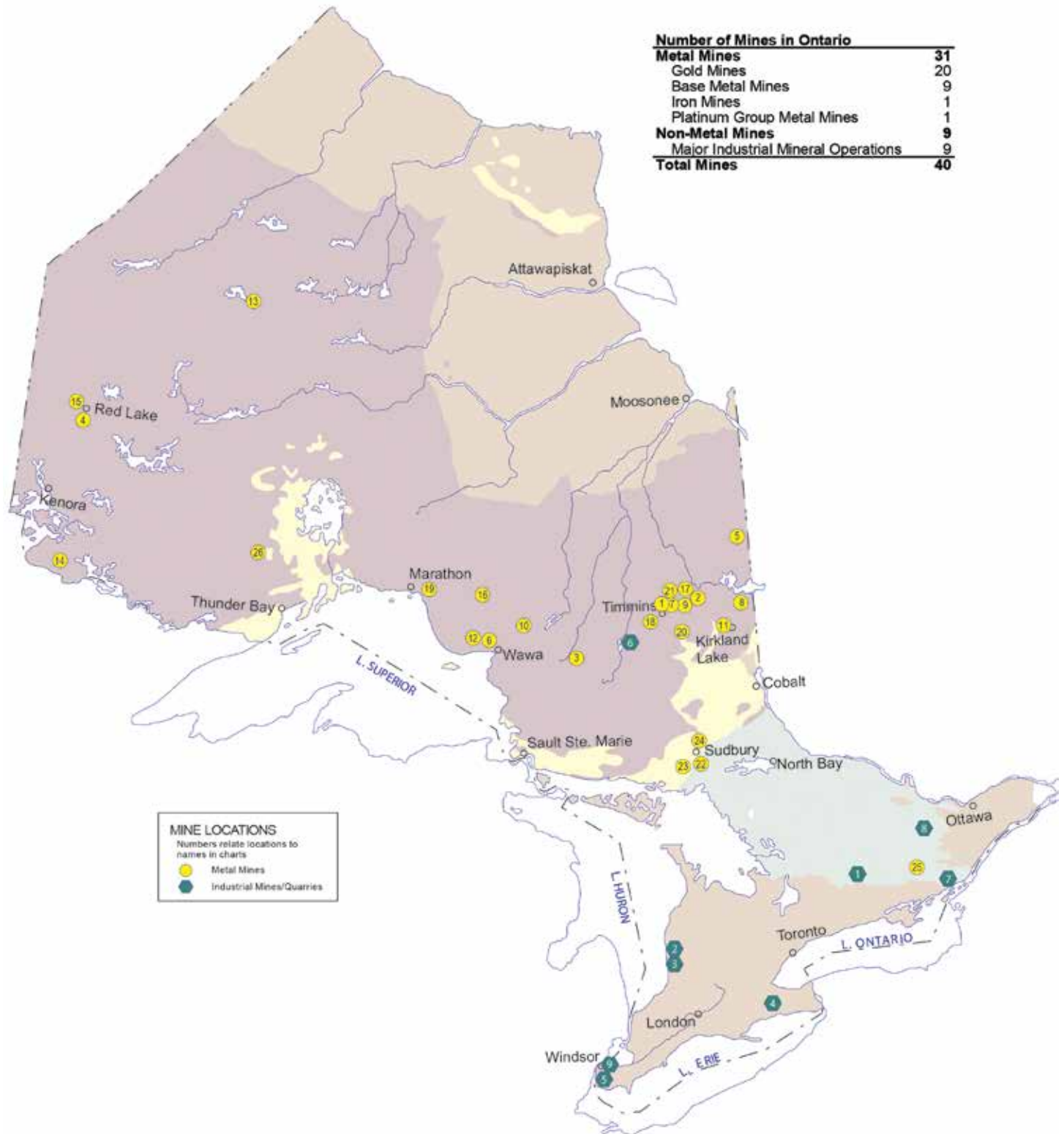
AME's annual Mineral Exploration Roundup conference is where mineral explorers, industry professionals and leaders go to share ideas, learn and network.

View the program and register online today at roundup.amebc.ca.

AME ROUNDUP.

Lens on Discovery

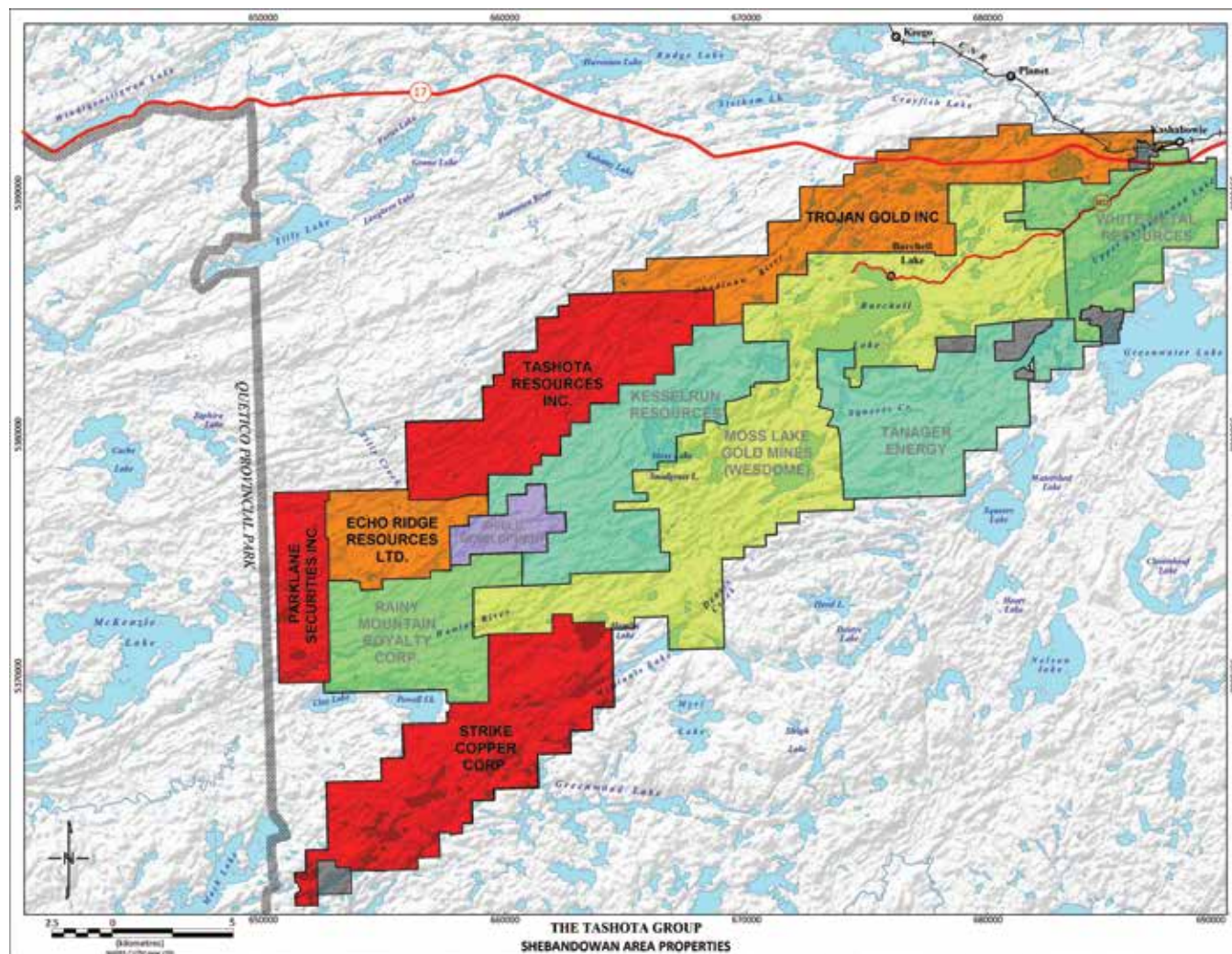
Ontario Mining Operations 2020



GOLD MINES		
	Name	Company
1	Bell Creek Mine	Pan American Silver Corp. – Tahoe Canada
2	Black Fox Mine	McEwen Mining Inc.
3	Borden Mine	Newmont Corp. – Porcupine Gold Mines
4	Cochénour Mine	Newmont Corp.
5	Detour Lake Gold Mine	Detour Gold Corp.
6	Eagle River Mine	Wesdome Gold Mines Ltd.
7	Hollinger Mine	Newmont Corp. – Porcupine Gold Mines
8	Holloway – Holt Mine	Kirkland Lake Gold Ltd.
9	Hoyle Pond Mine	Newmont Corp. – Porcupine Gold Mines
10	Island Gold Mine	Alamos Gold Inc.
11	Macassa Mine	Kirkland Lake Gold Ltd.
12	Mishi Gold Mine	Wesdome Gold Mines Ltd.
13	Musselwhite Mine	Newmont Corp.
14	Rainy River Mine	New Gold Inc.
15	Red Lake Gold Mines	Newmont Corp.
16	Sugar Zone Mine	Harte Gold Corp.
17	Taylor Mine	Kirkland Lake Gold Ltd.
18	Timmins West Mine	Pan American Silver Corp. – Tahoe Canada
19	Williams Mine	Barrick Gold Corp.
20	Young – Davidson Mine	Alamos Gold Inc.
BASE METAL MINES		
	Name	Company
21	Kidd Creek Mine	Glencore PLC
22	Sudbury Operations: McCreedy West Mine	KGHM International Ltd.
23	Sudbury Operations: Coleman Mine Copper Cliff North Mine Creighton Mine Garson Mine Totten Mine	Vale S.A.
24	Sudbury Operations: Fraser Mine Nickel Rim South Mine	Glencore PLC
IRON MINES		
	Name	Company
25	Tomclid Iron Mine	Ferromin Inc.
PLATINUM GROUP METAL MINES		
	Name	Company
26	Lac des Iles Mine	Impala Platinum Holdings Ltd. – Impala Canada Ltd.
MAJOR INDUSTRIAL MINERAL OPERATIONS		
	Name	Company
1	Blue Mountain Operations (nepheline syenite)	Covia Canada Ltd.
2	Goderich Brine Field (salt)	Compass Minerals Canada Corp.
3	Goderich Mine (salt)	Compass Minerals Canada Corp.
4	Hagersville Mine (gypsum)	Gebr. Knauf KG
5	Ojibway Mine (salt)	K+S Windsor Salt Ltd.
6	Penhorwood Mine (talc)	Imerys Talc
7	St. Lawrence Mine (wollastonite)	Canadian Wollastonite
8	Tatlock Quarry (calcium carbonate)	OMYA Canada Inc.
9	Windsor Brine Field (salt)	K+S Windsor Salt Ltd.

Shebandowan and Hemlo: Past, present, future

SHEBANDOWAN GREENSTONE BELT



There was – and is – a lot going on in the Shebandowan Greenstone Belt.

The Shebandowan Greenstone Belt is part of the Wawa Abitibi Subprovince, the world's second-largest historic gold producing terrane.

According to the Trojan Gold Inc. website (trojangold.com), recent studies "have recognized that the many show-

ings and deposits in this area are likely part of an extensive IOCG (iron ore copper gold) mineralized system." IOCG ore deposits are important and highly valuable concentrations of copper, gold and uranium ores hosted within iron oxide dominant gangue assemblages which share a common genetic origin.

Tremendous size, relatively simple metallurgy and relatively high grade of

IOCG deposits can produce extremely profitable mines.

Gold was first mined in the North-western Ontario Shebandowan area in 1871. Shebandowan became very active from 2003 through 2008, and then years later, starting in 2012 through 2019, Shebandowan has – once again – become the target of a staking and acquisition rush.



Tashota Resources Inc.

On the road to discovery

Tashota Resources Inc. ("TRI") is a Prospect Generator junior exploration company led by a talented team of professionals having significant exploration, engineering, project financing, and permitting experience. Under their guidance, TRI has acquired land positions in Ontario (Hemlo and Larose) and Quebec (Opinaca) that represent significant mineral exploration potential.

Investment Highlights

- Well-located, sizeable properties accumulated based on geological merit
- Focused spending: gaining critical mass at core projects to move from project generator model to high growth exploration company
- Expected news on Hemlo out of Barrick likely to support TRI's shear zone model, further highlighting the potential on TRI's ground
- Larose has the potential to be a sizeable bulk tonnage prospect with gold-bearing shear zone traced for 9 km
- Sirios' Cheechoo discovery has reinvigorated the Opinaca Camp. Modest program on TRI's ground warranted to de-risk and maintain optionality
- Goal to increase strategic corporate and institutional investor exposure with a view to be well supported in an eventual going public transaction

Tashota Resources Inc.

www.tashotaresources.com

Trojan Gold Inc.

www.trojangold.com

82 Richmond Street E., Suite 401
Toronto, ON M5C 1P1

C: **416-315-6490**

O: **647-350-6122**

E: **elbourne007@gmail.com**

***Both companies expect to be public in 2020**

The dominant player in the area is Wesdome Gold Mines, with the 3,000,000-plus ounce Au, Moss Lake deposit. In 2016, Wesdome consolidated properties adjacent to the Moss Lake deposit, increasing their footprint in the area.

Currently, Tashota Resources Inc. (along with associated companies through joint directors) is involved in a prolific gold/copper/zinc play at Shebandowan. Tashota and partners control over 44,000 acres in the Sheband-

owan Greenstone Belt, representing the most significant land position in the gold camp. Charles Elbourne, president, director, and CEO of Tashota Resources Inc., says his approach to acquiring Shebandowan – among other properties, such as Hemlo – is "lowkey."

"It's taken over eight years to acquire all these properties in the Shebandowan Greenstone belt, and Hemlo Gold Camp. By staying private and not going public, Tashota saved a lot of money for our shareholders," Elbourne says.

According to Ernst & Young's latest study, 49 mining and metals companies delisted from the TSX and TSX-V in 2014 and a further 172 companies delisted in 2015.

"You have to acquire the right properties, the right people, then provide the right structure on each deal," he says.

Elbourne recalls waiting for properties to come open or option at Shebandowan and Hemlo, stating his philosophy is TEO (targeted exploration opportunities): seeking out opportunities where others gave up due to bad market conditions, mismanagement or lack of ongoing financing.

He uses the triangle method, which focuses on three points: property, people, and structure.

Many will argue that the most critical part of the triangle method is people first, then property and structure. Elbourne disagrees with this approach; why would knowledgeable geologists and prospectors be interested in working claims without any merit, or at least some history, unless they are just looking for work?

Instead, the approach should be to acquire a property with a good history, good results, and preferably right beside an existing deposit; this will draw experienced geologists and prospectors and take away some of the risks. The bear market in gold over the past eight years has provided this opportunity.

Next, get prospectors and geologists that are specifically related to the immediate area of acquisition. In this case, Tashota has been very fortunate in acquiring two notable prospectors, Russell Kwiatkowski (original discoverer of Larose and Sungold properties in Shebandowan) and Rudy Wahl (well-known for significant discoveries and very familiar with the Hemlo Gold Camp and surrounding areas).

Both gentlemen have received many awards, from Prospector of the Year to Lifetime Achievement Awards in Mining; Wahl was awarded an honor-

Keep Your Equipment Moving! With Premium Quality Parts & Service

ISO-9001

SPICER AXLETECH FUNK DRIVE TRAIN COMPONENTS CARRARO Kubec KESSLER-CO

**TRANSMISSIONS • AXLES • TORQUE CONVERTERS
TRANSFER CASES • MULTI-BAY REBUILD SHOP
24 HOUR EMERGENCY SERVICE TRUCK AVAILABLE!**

THE GEAR CENTRE OFF HIGHWAY
www.gearcentre-offhwy.com

Bay #2, 7337 Pacific Circle, Mississauga **1-888-246-5077**



2020

THE WORLD'S PREMIER
MINERAL EXPLORATION
& MINING CONVENTION

March 1 – 4

Metro Toronto Convention Centre
Toronto, Canada



REGISTER AT pdac.ca/convention

Purchase an All Access Pass and enjoy unlimited programming, networking events & more!

EXPAND YOUR NETWORK

25,000+ attendees
from 132 countries

GAIN INSIGHTS FROM INDUSTRY EXPERTS

780+ speakers

ACCESS TO CAPITAL

2,500+ investors

PROMOTE YOUR BUSINESS

1,100+ exhibitors



Teck



ary doctorate degree in science from Lakehead University in 2017, and will be awarded the upcoming Bill Dennis Award for 2020. Both prospectors are board members of Tashota.

Once you have good prospectors, one needs to add a very experienced geological team that is familiar with the properties to the equation.

Tashota Resources and sister company Trojan Gold Inc. have been fortunate to attract outstanding geological talent as directors and advisors. The team consists of the following directors: Dr. Mary Louise Hill (on the front cover), professor of geology, Lakehead University; Gerry White, P.Geo., B.Sc., who served many years as resident geologist with the Ministry of Mines; Rodney Barber, P.Geo., B.Sc., recently superintendent geologist for 18 years at Barrick Gold's Hemlo Mine; Quentin Snider, previously band administrator for Lac des Mille Lacs First Nations; Victor Hugo, senior financial analyst and formerly head of Finance at Barrick's Hemlo Mine; and Ike Osmani, M.Sc., P.Geo., responsible for developing the Osmani Gold Deposit, containing almost one million ounces of gold (indicated and inferred) at Shebandowan.

Advisors to the companies include

Dr. Colin Bowdidge, over 40 years as chief geologist for various public mining companies, and David Malouf. Dr. Bowdidge also has extensive hands-on experience in modern geophysical and geochemical exploration techniques. Malouf brings a lifetime of hands-on experience in Canadian mining and is very experienced as a mine operator, having overseen the Empire Mine operations in Beardmore, Ont.

With prospectors and geologists in charge of the development and advancement of the portfolio of properties, the remaining component is company structure.

During the past few years, there has been an increase in financings for private mining deals as investors have strayed from the public domain. This has forced public junior mining companies to raise capital at distressed prices that, unfortunately, dilute their share base. By staying private for the past six years, Tashota has managed to avoid this situation, but with a new bull market in gold, it is time to go public.

Why, Shebandowan, why Larose, why Sungold?

Management of Tashota acquired the Larose property based on its high-

grade gold results by previous owners. In 2011, P1 Trench sampling resulted in 45.93 g/t Au over 3.1 metres and 54.21 g/t Au over 1.4 metres.

With less than 3,000 metres of previous drilling on the 12,000-plus acreage property, Larose provided an excellent opportunity for further development. Past sampling and drilling had resulted in 6.8 g/t to 371.9 g/t Au, extended over 4.6 kilometres of shear zones. These shear zones are now over nine kilometres, based on fieldwork, and a recent discovery, the Alexander Trench, resulted in samples containing 50.9 g/t Au, and 19 g/t Ag. Previous samples from the P1 Trench taken by geologists ranged from 55.88 g/t to 173.39 g/t Au. Drilling during 2019 at the P1 Trench intercepted, at shallow depth (less than 50 feet), 68.6 g/t Au over .55 metres, situated approximately 15 metres from the 2016 drill results, which included 27.69 g/t Au in LR16-01, 19.73 g/t Au in LR16-02 and 37.34 g/t Au in LR16-03, all over core lengths of 0.50 metres.

The 12,000-plus acre Sungold property, situated approximately six kilometres south of the Larose property, is directly adjacent to the west of Wesdome's Moss Lake 3,000,000 oz/t Au



CORRIVEAU J.L. & ASS. INC. ARPENTAGE

JEAN-LUC CORRIVEAU, PRÉSIDENT
A.-G. A.T. C.

Ortho Photo | 3D Topography | Monitoring
Exploration and Mining Survey | Bathymetry
Airborne and Ground 3D Lidar | Cavity Scan
Gyro-Theodolite | Borehole Deviation (Gyro)
Photos and Dtm By Drone

RENTALS & SERVICES

1085, 3^e Avenue Ouest, Val-d'Or
(Québec) Canada J9P 1T5
www.corriveaujl.com

Tel: (888) 825-3702
Fax: (819) 825-2863
bureau@corriveaujl.com

Sample Core IP Tester (SCIP)



Characterize your physical properties!
RESISTIVITY / CHARGEABILITY



www.gdd.ca
E-Mail: gdd@gdd.ca

DURING THE PAST FEW YEARS, THERE HAS BEEN AN INCREASE IN FINANCINGS FOR PRIVATE MINING DEALS AS INVESTORS HAVE STRAYED FROM THE PUBLIC DOMAIN.

deposit. Wesdome completed the acquisition of 100-per cent interest in the Moss Lake property in March 2014, through the buyout of the Moss Lake Gold Mines that they did not already own. As noted above, Wesdome continued to expand the Moss Lake claim positions in 2016, consolidating the properties into the present holding.

The Sungold property, acquired in 2018 and recently owned by Noront, met all the requirements for acquisition, especially after Wesdome purchased the southeast extension of Xstrata's Hamlin IOCGU occurrence. The Hamlin IOCGU occurrence has the potential for Ni-Cu-PGE and Porphyry Cu mineralization. One drill hole, HAM-11-75, approximately 150 metres from the

Sungold claim line next to Wesdome, came in at 156.1 metres grading 0.35 per cent Cu, 0.015 per cent Mo, 2.15 g/t Ag and 0.87 g/t Au. Another drill hole, in the immediate area, HAM-05-35, had the copper equivalent of 0.68 per cent over 49 metres (162 feet).

Previously, in 2005, when Freewest Resources owned the Sungold property, backhoe trenching of the Wye Lake Zone intermittently exposed massive, semi-massive and stringer sulphides over an 850-metre strike length. Highlighting the trenching program was the uncovering of massive zinc-copper mineralization at two locales, situated 400 metres apart and on strike with each other. Assays of up to 27.8 per cent zinc and 0.91 per cent copper

were obtained at one trench line and up to 29.8 per cent zinc and 0.84 per cent copper at another. A few months earlier in March 2005, the Sungold property purportedly had a street IPV of \$54 million. Drill holes during 2005 in the Wye Lake area had also provided exciting results, including WL05-08 of 13.75 metres of 0.77 per cent Cu and WL05-13 of 12.45 metres of 0.72 per cent Cu. Management of Strike Copper Corp. will start fieldwork during 2020 to further delineate the resource and seek listing on the CSE.

Hemlo – the gold camp that refuses to die

Hemlo has a fascinating history. Although gold was first discovered at



**G4
FORGE
DRILLING**

INQUIRIES: CANADA@G4DRILLING.COM | MEXICO@G4DRILLING.COM

TEL: 819 825 4079

Hemlo back in 1944 by Peter Moses, an Ojibway prospector from Marathon, nothing took place until 1980 when the 76th drill hole hit a resource that started a major staking rush in the immediate area. In 1981, Corona Resources at the time was trading around \$1.10 based on rumours coming out of the camp that something big was happening. By May 1983, Corona was trading at \$61.00 (a 5,445 per cent return). Not to be outdone, the other two majors in the camp, Goliath Gold moved from \$0.45 to \$32 (7,110 per cent), and Golden Sceptre traded from \$0.40 to \$31 (7,650 per cent). By March 1983, gold had topped out near \$500, and the Hemlo Rally was over.

But the Hemlo Gold Camp was just getting started. Noranda spent over

\$250 million building the first facility, followed by other companies, and production began in 1985. Hemlo became the most significant mine find in the western hemisphere. The David Bell and Golden Giant Mines were among the lowest cost gold mines in the world at the time.

Here is what is interesting about the Hemlo Gold Camp: it's like the Energizer Bunny – it just keeps going. The central Golden Giant mine was closed in January 2006, and the David Bell and Williams mines scheduled to close in 2009 and 2011, respectively.

Fast forward to the present, and now we find Barrick announcing the probability of the mine continuing to 2028 and possibly 2035.

But that was not the case in 2011 when it was thought that the Williams Mine might close in 2014. In 2013, Barrick Gold announced that another 1,000,000 ounces was discovered, and the mine production would extend to 2018.

Tashota management then moved to acquire claims adjacent to Barrick's open pit. Why bother purchasing claims nearby if the mine was probably going to close in four years?

The reality is Hemlo has never consistently been explored since the 1980s outside of the immediate comfort area where the original discovery took place.

Here is the problem at Hemlo: approximately 90 per cent of the 22,000,000 ounces of gold extracted from the three mines, until recently, was below 500 metres. This anomaly scares most juniors away from the area, but this doesn't mean the gold is not there. It's outside the comfort zone, yes - but well within reach of modern mining technology.

Barrick's management realized this in 2013, and the result is the present administration at Barrick intends to make Hemlo a Tier 2 mine operating at 215 to 300 koz and generate a 20 per cent IRR.

By 2015, management at Tashota moved to acquire more claims adjacent and close to Barrick's Williams Mine, accumulating over 18,000 acres, mainly adjacent to Barrick.

A major airborne T-Dem performed in 2014 and 2016 covered the entire

Greg MacDonald Tel: 705-560-2739
Equipment Services Inc. 24 Hour Service

HEAVY EQUIPMENT RENTALS, SALES, AND SERVICE
Scissorlifts > Knucklebooms > Forklifts
Mining Equipment > Aerial Booms
Mini-Excavators > Skid-Steer Loaders
TRADESPERSON SUPPLY – WELDERS & MECHANICS
Tilt & Load Service
Equipment Training



Email: gme@gmes.ca
2755 Lasalle Blvd., Sudbury, ON P3A 4R7
www.gmes.ca



For weather equipment that works as hard as you do.



PO BOX 900 326 Main Street, Ignace, ON P0T 1T0
(807) 934-8403 www.signalweather.ca

We're serious about the weather.

WE'RE MORE THAN JUST RIGGING AND WIRE ROPE

SLING-CHOKER MANUFACTURING


slingchoker.com







HERE IS WHAT IS INTERESTING ABOUT THE HEMLO GOLD CAMP: IT'S LIKE THE ENERGIZER BUNNY - IT JUST KEEPS GOING.

property, including Aster Satellite LWIR Thermal Imaging Survey in May 2019. Combined, this helped determine potential exploration and drill targets. These targets will be carefully examined during 2020, using UAV Mag, MMI and drilling.

Management of Tashota and Trojan Gold is looking forward to working Hemlo during 2020, and Trojan will be applying for listing on the CSE.

A merchant banking company, Interbank Capital Corp., is presently being formed to better centralize the operation of all the properties and associated companies, this way better utilizing overhead costs, concentrating services, and maintaining proper control.

The "Hemlo Gold Story", produced by the CBC back in the '80s provides a

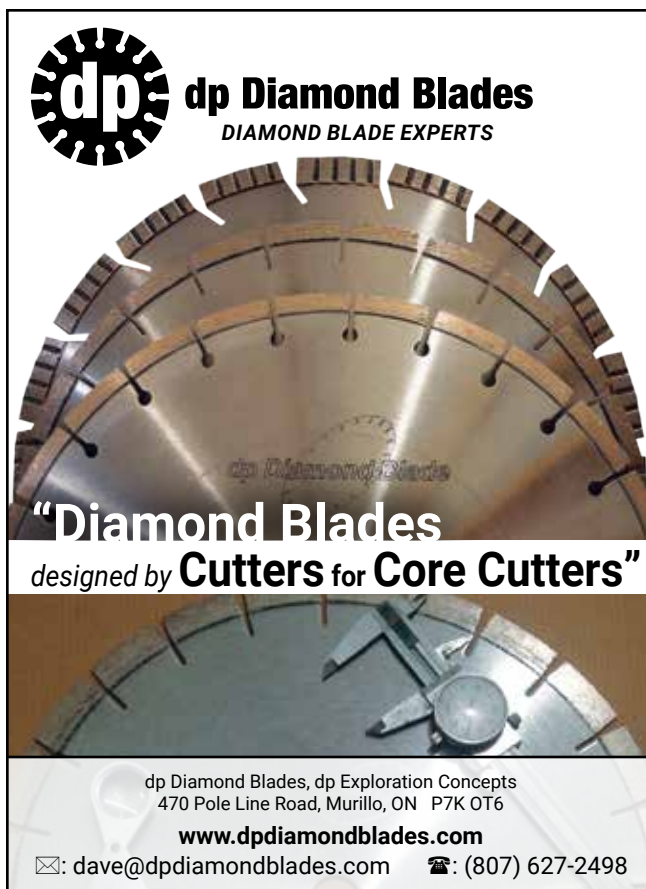
fascinating history of Hemlo and can be found on the (tashotaresources.com) website.

Elbourne has another gold project he is working on which he calls "The Sleeper" that shows historical results from shaft work in 1936, showing a test shipment of 1,000 pounds of ore averaging 1.12 ounces per ton of gold, only 100 to 150 feet down in the shaft and adits. While the results may be questionable (it was 1936), a map was drawn by a well-respected company at the time, and nobody talked grams in 1936. Nonetheless, in 2013 drilling over the immediate area resulted in some great numbers starting nine feet from surface, including 8.226 g/t Au over 8.70 metres, which is sufficient to get excited about the prospect. Old historical gov-

ernment files indicate the ongoing opportunities to find gold in Ontario.

The children are the future

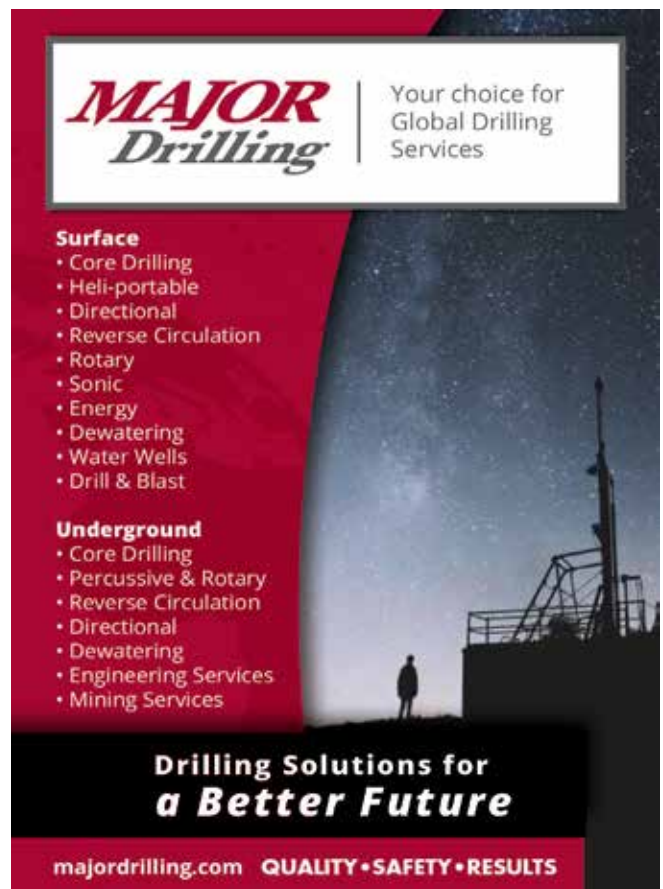
Shebandowan is on the cusp of an exploration revival. Tashota Resources has the potential of not only becoming a groundbreaker in new discoveries, but also a forerunner in corporate social responsibility with the First Nations people. Partnering up with Outland Youth Employment Program (OYEP) has been a significant milestone for our company. It's really about relationship-building with Indigenous communities through consulting with elders to ensure success in training, education and employment for the Indigenous youth. ●



dp Diamond Blades
DIAMOND BLADE EXPERTS

“Diamond Blades
designed by **Cutters for Core Cutters”**

dp Diamond Blades, dp Exploration Concepts
470 Pole Line Road, Murillo, ON P7K 0T6
www.dpdiamondblades.com
✉: dave@dpdiamondblades.com ☎: (807) 627-2498



MAJOR Drilling | Your choice for Global Drilling Services

Surface

- Core Drilling
- Heli-portable
- Directional
- Reverse Circulation
- Rotary
- Sonic
- Energy
- Dewatering
- Water Wells
- Drill & Blast

Underground

- Core Drilling
- Percussive & Rotary
- Reverse Circulation
- Directional
- Dewatering
- Engineering Services
- Mining Services

Drilling Solutions for a Better Future

majordrilling.com **QUALITY • SAFETY • RESULTS**

GOLD MINES

BELL CREEK MINE - Pan American Silver Corp. - Tahoe Canada • gold producer • underground

Address	1515 Government Road South, Timmins, ON P4R 1N4 Tel: (705) 269-4344 Fax: (705) 268-1794 www.panamericansilver.com
Mine Manager	Dave Bernier
Production Rate	800 tonnes per day (mine), 4,400 tonnes per day (mill)
Production	2016 - 162,000 ounces (estimate for Bell Creek and Timmins West mines combined) 2017 - 167,000 (Bell Creek and Timmins West mines combined) 2018 - 167,500 (estimate for Bell Creek and Timmins West mines combined) 2019 - 157,500 (estimate for Bell Creek and Timmins West mines combined) 2020 - 172,500 (guidance for Bell Creek and Timmins West mines combined)
Resources	17,000,000 tonnes at 3.27 g/t containing 1,787,000 ounces of gold (Measured and Indicated - June 2019)
Opened	2012
Employment	650 employees, 70 contractors (Timmins West and Bell Creek combined)

Notes: Ore from the Bell Creek and Timmins West mines is processed at the Bell Creek Mill. Pan American Silver Corp. purchased its Ontario mines through its acquisition of Tahoe Resources in a US\$1.1 billion deal that closed Feb. 22, 2019. Pan American Silver operates its Ontario mines under its subsidiary Tahoe Canada. In 2020, production is expected to be increased by 20 per cent at Bell Creek and incremental production increases are expected over the following four years. Bell Creek and Timmins West are expected to operate through 2025.

BLACK FOX MINE - McEwen Mining Inc. • gold producer • underground

Address	P.O. Box 605, Matheson, ON P0K 1N0 Tel: (705) 273-1077 Fax: (705) 273-1097 www.mcewenmining.com
Mine Manager	Dan Gagnon, General Manager
Production Rate	700 tonnes per day (mine), 2,000 tonnes per day (mill)
Production	2016 - 62,171 ounces of gold 2017 - 66,733 ounces of gold 2018 - 48,848 ounces of gold 2019 - 35,721 ounces of gold 2020 - 39,550 ounces of gold (estimate)
Resources	7,758,000 tonnes at 5.31 g/t containing 1,326,000 ounces of gold (Measured and Indicated - July 2019)
Opened	2009 (open pit, closed 2015), 2011 (underground)
Employment	257

Notes: Black Fox Complex is comprised of the Black Fox and former Stock mines, Black Fox-Stock mill and Froome and Grey Fox deposits. Production at Black Fox is planned to be scaled back in 2020 to allow for greater freedom to explore in the mine and to free resources to advance development of the Froome underground deposit. Updated guidance has yet to be provided reflecting lower production levels. In 2019, an \$18-million property-wide exploration program was conducted at Black Fox Complex. Exploration in 2020 will focus on the Stock West, Grey Fox and Black Fox areas.

BORDEN GOLD MINE (PORCUPINE MINES) - Newmont Corp. • gold producer • underground, open pit

Address	4315 Gold Mine Road, P.O. Box 70, South Porcupine, ON P0N 1H0 Tel: (705) 235-6589 Fax: (705) 235-6551 www.newmont.com
Mine Manager	Marc Lauzier, Mine General Manager, Porcupine Mines Operations
Production Rate	1,800 tonnes per day
Production	2019 - 225,000 ounces of gold (management projection for Porcupine Mines Operations combined) 2020 - 325,000 ounces of gold (guidance for Porcupine Mines Operations combined)
Resources	492,730,000 tonnes at 1.04 g/t containing 16,540,000 ounces of gold (Measured and Indicated - June 2018 for Porcupine Mines Operations combined)
Opened	2019
Employment	800 employees, 445 contractors (approximate figures for Porcupine Mines Operations combined)

Notes: Porcupine Mines Operations include the Hoyle Pond, Hollinger, Borden, and former Dome mines, several stockpiles and a mill. Ore from Borden is processed at the Porcupine mill near Timmins. Commercial production was declared at Borden Mine effective Oct. 1, 2019, on time and within budget. Between 200 and 250 jobs were created at Borden mine. Borden is the world's first all-electric underground gold mine.

COCHENOUR GOLD MINE (RED LAKE GOLD MINES) - Newmont Corp. • gold producer • underground

Address	17 Mine Road, Bag 2000, Balmertown, ON P0V 1C0 Tel: (807) 735-2077 Fax: (807) 735-2765 www.newmont.com
Mine Manager	Bill Gascon, Mine General Manager
Production Rate	1,500 tonnes per day
Production	2019 - 155,000 ounces of gold (guidance for Red Lake Gold Mines operations combined) 2020 - 277,869 ounces of gold (estimate for Red Lake Gold Mines operations combined)
Resources	14,490,000 tonnes at 9.83 g/t containing 4,580,000 ounces of gold (Measured and Indicated for Red Lake Gold Mines operations combined - June 2018)
Opened	1919
Employment	981 employees and contractors (Red Lake Gold Mines Operations combined)

Notes: Cochenour achieved commercial production status in April 2019. Production comes from the old Cochenour mine and the new Upper Cochenour Zone. The redeveloped shaft of the old Cochenour mine is used to access ore between 1,091- and 1,680-metre levels. The Cochenour mine is located on the site of the historic Cochenour-Willans mine that operated from 1929 to 1971, producing 1.2 million ounces of gold.

DETOUR LAKE GOLD MINE - Detour Gold Corp. • gold producer • open pit

Address	86 2nd Street, P.O. Box 1325, Cochrane, ON P0L 1C0 Tel: (647) 847-2089 Fax: (705) 272-2558 www.detourgold.com
Mine Manager	David Londono, General Manager
Production Rate	291,000 tonnes per day
Production	2016 - 537,765 ounces of gold 2017 - 571,463 ounces of gold 2018 - 621,128 ounces of gold 2019 - 601,566 ounces of gold 2020 - 587,000 ounces of gold (guidance)
Resources	613,570,000 tonnes at 1.01 g/t containing 19,867,105 ounces of gold (Measured and Indicated - December 2018)
Opened	2013
Employment	800 employees, 200 contractors

Notes: Detour's Life of Mine Plan extends to 2040 with average gold production of 659,000 ounces per year. The Detour Gold Corp. and Detour Lake mine are being acquired by Kirkland Lake Gold in a \$4.9-billion deal that is expected to close in January 2020. In 2020, a pre-feasibility study is planned for the Lower Detour Underground Zone, a large tonnage, low-grade Zone that extends beneath the current pit. Drilling in 2020 will focus on the 58N area of the mine.

EAGLE RIVER MINE - Wesdome Gold Mines Ltd. • gold • underground

Address	93 Mission Road, P.O. Box 1520, Wawa, ON P0S 1K0 Tel: (705) 856-2721 Fax: (705) 856-2979 www.wesdome.com
Mine Manager	Dave Whiteway, General Manager
Production Rate	335 tonnes per day
Production	2016 - 40,252 ounces of gold 2017 - 50,996 ounces of gold 2018 - 67,315 ounces of gold 2019 - 88,617 ounces of gold 2020 - 91,500 ounces of gold (guidance)
Resources	1,157,000 tonnes at 11.70 g/t containing 435,300 ounces of gold (Measured and Indicated - December 2018)
Opened	1995
Employment	220

Notes: Eagle River Complex includes the Eagle River Mine and the Mishi mine and mill. In 2020, \$9.8 million in exploration at Eagle River is planned. The program will include 72,000 metres of underground exploration drilling, 47,000 metres of definition drilling and 33,500 metres of surface drilling. Five drill rigs will be deployed underground and two on surface.

HOLLINGER MINE (PORCUPINE MINES) - Newmont Corp. • gold producer • open pit

Address	4315 Gold Mine Road, P.O. Box 70, South Porcupine, ON P0N 1H0 Tel: (705) 235-6589 Fax: (705) 235-6551 www.newmont.com
Mine Manager	Marc Lauzier, Mine General Manager, Porcupine Mines Operations
Production Rate	12,000 tonnes per day (Porcupine Mines Operations combined)
Production	2016 - 277,000 ounces of gold (Porcupine Mines Operations combined) 2017 - 272,000 ounces of gold (Porcupine Mines Operations combined) 2018 - 259,000 ounces of gold (Porcupine Mines Operations combined) 2019 - 225,000 ounces of gold (management projection for Porcupine Mines Operations combined) 2020 - 325,000 ounces of gold (guidance for Porcupine Mines Operations combined)
Resources	492,730,000 tonnes at 1.04 g/t containing 16,540,000 ounces of gold (Measured and Indicated - June 2018 for Porcupine Mines Operations combined)
Opened	2014
Employment	200 (approximate)

Notes: Porcupine Mines Operations include the Hoyle Pond, Hollinger, Borden and former Dome mines, several stockpiles and a mill. Hollinger Mine is located directly adjacent to downtown Timmins. Hollinger Mine is expected to operate until the first quarter of 2023. Newmont's Ontario gold mines were procured through its acquisition of Goldcorp in a US\$10 billion deal that closed Jan. 1, 2019. Newmont's Century Project, a proposed open-pit gold mine located on the site of the former Dome pit, is still in development and working through the environmental permitting phase. Plans for the Century Project include a 70,000-tonne-per-day pit and a new 70,000-tonne-per-day on-site milling complex.

HOLLOWAY-HOLT MINE (HOLT COMPLEX) - Kirkland Lake Gold Ltd. • gold producer • underground

Address	Highway 101 East, Box 609, Matheson, ON P0K 1N0 Tel: (705) 567-4862 Fax: (705) 567-4863 www.klgold.com
Mine Manager	Evan Pelletier, General Manager, Kirkland Lake Operations
Production Rate	Holloway Area: 450 tonnes per day (capacity) Holt Area: 1,500 tonnes per day (mine), 3,000 tonnes per day (mill)
Production	Holloway Area: 2016 - 27,129 ounces of gold 2017 - 287 ounces of gold 2018 - 718 ounces of gold 2019 - See Holt Area 2020 - See Holt Area Holt Area: 2016 - 57,086 ounces of gold 2017 - 66,677 ounces of gold 2018 - 67,770 ounces of gold 2019 - 113,952 ounces of gold (Holt Complex operations combined) 2020 - 130,000 ounces of gold (guidance for Holt Complex operations combined)
Resources	Holloway Area: 2,452,000 tonnes grading 4.20 g/t, containing 328,000 ounces of gold (Measured and Indicated - December 2018) Holt Area: 10,473,000 tonnes grading 4.10 g/t, containing 1,385,000 ounces of gold (Measured and Indicated - December 2018)
Opened	Holloway Area: 2009 Holt Area: 2010
Employment	Holloway Area: 116 (estimate) Holt Area: 168

Notes: The Holt Mill processes ore from Holloway-Holt and Taylor Mines. At the start of 2019, reporting for Holloway-Holt and Taylor mines were combined into one segment, the Holt Complex. Holloway area resumed operations during the first quarter of 2019. Operations at Holloway had been suspended since 2016.

HOYLE POND MINE (PORCUPINE MINES) - Newmont Corp. • gold producer • underground

Address	4315 Gold Mine Road, P.O. Box 70, South Porcupine, ON P0N 1H0 Tel: (705) 235-6589 Fax: (705) 235-6551 www.newmont.com
Mine Manager	Marc Lauzier, General Mines Manager, Porcupine Mines Operations
Production Rate	1,000 tonnes per day, 12,000 tonnes per day (Porcupine Mines Operations combined)
Production	2016 - 277,000 ounces of gold (Porcupine Mines Operations combined) 2017 - 272,000 ounces of gold (Porcupine Mines Operations combined) 2018 - 259,000 ounces of gold (Porcupine Mines Operations combined) 2019 - 225,000 ounces of gold (management projection for Porcupine Mines Operations combined) 2020 - 325,000 ounces of gold (guidance for Porcupine Mines Operations combined)
Resources	492,730,000 tonnes at 1.04 g/t containing 16,540,000 ounces of gold (Measured and Indicated - June 2018 for Porcupine Mines Operations combined)
Opened	1985
Employment	800 employees, 445 contractors (approximate figures for Porcupine Mines Operations combined)

Notes: Porcupine Mines Operations include the Hoyle Pond, Hollinger, Borden and former Dome mines, several stockpiles and a mill. In November 2019, SafeSight Exploration celebrated its 12-month, 100-flight anniversary using drones for underground mapping, surveying and inspections at Hoyle Pond. The drones can be operated remotely in areas that would be hazardous to workers and can conduct surveys and inspections at less risk and often faster than an employee.

ISLAND GOLD MINE - Alamos Gold Inc. • gold producer • underground

Address	15 Goudreau Road, P.O. Box 456, Dubreuilville, ON P0S 1B0 Tel: (705) 884-2805 Fax: (815) 797-0166 www.alamosgold.com
Mine Manager	Jean Bastien
Production Rate	1,200 tonnes per day
Production	2016 - 83,323 ounces of gold 2017 - 98,800 ounces of gold 2018 - 105,800 ounces of gold 2019 - 140,000 ounces of gold (guidance) 2020 - 137,500 ounces of gold (guidance)
Resources	3,740,000 tonnes at 10.00 g/t containing 1,200,000 ounces of gold (Measured and Indicated - December 2018)
Opened	2007
Employment	341 employees, 217 contractors

Notes: Ore from Island Gold Mine is processed at the Kremzar Mill, located about 0.8 kilometres from the mine. Alamos Gold Mines is advancing a \$68-million expansion project at their Island Gold Mine near Wawa. A Phase 3 expansion study at Island Gold will be completed during the first half of 2020 that will examine increasing production rates beyond 1,200 tonnes per day. Approximately \$55 million in capital expenditures are planned at Island Gold in 2020. Capital projects include an expansion of the tailings facility and the construction of a new administration building, dry facility and underground workshop. Island Gold has a 2020 exploration budget of \$21 million that will include 76,000 metres surface and underground drilling in the Island Gold Main Zone and a 10,000-metre regional exploration project on the Island Gold property.

MACASSA MINE - Kirkland Lake Gold Ltd. • gold producer • underground

Address	1350 Government Road West, P.O. Box 370, Kirkland Lake, ON P2N 3J1 Tel: (705) 567-5208 Fax: (705) 568-6444 www.klgold.com
Mine Manager	Evan Pelletier, General Manager, Kirkland Lake Operations
Production Rate	1,000 tonnes per day (mine), 2,000 tonnes per day (mill capacity)
Production	2016 - 175,167 ounces of gold 2017 - 194,273 ounces of gold 2018 - 240,126 ounces of gold 2019 - 241,297 ounces of gold 2020 - 245,000 ounces of gold (guidance)
Resources	4,977,000 tonnes at 20.20 g/t containing 3,233,000 ounces of gold (Measured and Indicated - December 2018)
Opened	2002
Employment	900

Notes: Macassa's No. 4 Shaft Project began in 2018. The new shaft is expected to increase hoisting capacity to 4,000 tonnes per day. In 2019, the shaft project had expenditures of \$45 million. In 2022, Phase 1 of the shaft project will be completed, extending the shaft to a depth of 5,450 feet, and production will commence at a rate of 320,000 to 340,000 ounces per year. In Phase 2, the shaft will be sunk to the 7,000-foot level by the end of 2023, increasing production to 400,000 ounces per year. In 2020, 270,000 metres of drilling is planned at the mine, focused on infill and extension drilling at the SMC, evaluating targets at depth along the Amalgamated Break, and along the Main and '04 breaks.

MISHI GOLD MINE - Wesdome Gold Mines Ltd. • gold producer • open pit

Address	93 Mission Road, P.O. Box 1520, Wawa, ON P0S 1K0 Tel: (705) 856-2721 ext. 507 Fax: (705) 856-2979 www.wesdome.com
Mine Manager	Dave Whiteway, General Manager
Production Rate	127 tonnes per day (mine), 900 tonnes per day (mill)
Production	2016 - 7,485 ounces of gold 2017 - 7,985 ounces of gold 2018 - 4,310 ounces of gold 2019 - 3,072 ounces of gold 2020 - 3,500 ounces of gold (guidance)
Resources	123,500 tonnes at 2.80 g/t containing 11,000 ounces of gold (Measured and Indicated - December 2018)
Opened	2012
Employment	40 (approximately)

Notes: Eagle River Complex includes the Eagle River Mine and the Mishi mine and mill. Wesdome has plans to increase the production rate at Mishi Mine from 400 to 900 tonnes per day over the next few years. Mineralization at Mishi is open to the west and at depth. No exploration drilling occurred at Mishi in 2019 and none is planned at Mishi in 2020.

MUSSELWHITE MINE - Newmont Corp. • gold producer • underground

Address	P.O. Box 7500, Thunder Bay, ON P7B 6S8 Tel: (807) 928-2200 Fax: (807) 928-2067 www.newmont.com
Mine Manager	Don Burke, Mine General Manager
Production Rate	4,500 tonnes per day
Production	2016 - 261,000 ounces of gold 2017 - 236,000 ounces of gold 2018 - 205,000 ounces of gold 2019 - 37,167 ounces of gold (estimated) 2020 - 140,000 ounces of gold (guidance)
Resources	13,110,000 tonnes at 6.19 g/t containing 2,610,000 ounces of gold (Measured and Indicated - June 2018)
Opened	1997
Employment	380 employees and 332 contractors (estimate)

Notes: Musselwhite was placed on care and maintenance following a fire affecting the underground conveyor system at the mine on March 29, 2019. No injuries were reported but development progress was impacted. Production was not expected to resume until early 2020. Musselwhite Material Handling Project is now expected to be completed in mid-2020. The project involves installing a 5,000-tonne-per-day raisebore winze from the 1,250-metre level to the 250-metre level. The project is expected to increase production by 20 per cent and reduce costs by 10 per cent.

RAINY RIVER MINE - New Gold Inc. • gold producer • underground, open pit

Address	5967 Highway 11/71, P.O. Box 5, Emo, ON POW IE0 Tel: (807) 482-0900 www.newgold.com
Mine Manager	Eric Vinet, General Manager
Production Rate	24,000 tonnes per day
Production	2017 - 37,047 ounces of gold 2018 - 227,284 ounces of gold 2019 - 253,772 ounces of gold 2020 - 257,500 ounces of gold (estimated)
Resources	186,607,000 tonnes graded at 1.06 g/t gold and 3.22 g/t of silver, containing 6,324,000 ounces of gold and 19,436,000 ounces of silver (Measured and Indicated - December 2018)
Opened	2017
Employment	682 employees

Notes: In 2019, 3,580 metres of exploration drilling were completed to test the potential repeats of mineralized lenses north of the Intrepid Zone. Results are still pending. Capital costs at Rainy River were ~\$190 in 2019 but are expected to decline in 2020 as construction is substantially complete. An updated life of mine plan for Rainy River is expected to be published in February 2020.

RED LAKE GOLD MINE (RED LAKE GOLD MINES) - Newmont Corp. • gold producer • underground

Address	17 Mine Road, Bag 2000, Balmertown, ON POV 1C0 Tel: (807) 735-2077 Fax: (807) 735-2765 www.newmont.com
Mine Manager	Bill Gascon, Mine General Manager
Production Rate	1,250 tonnes per day
Production	2016 - 324,000 ounces of gold 2017 - 209,000 ounces of gold 2018 - 276,000 ounces of gold (guidance) 2019 - 155,000 ounces of gold (estimate for Red Lake Gold Mines operations combined) 2020 - 277,869 ounces of gold (estimate for Red Lake Gold Mines operations combined)
Resources	14,490,000 tonnes at 9.83 g/t containing 4,580,000 ounces of gold (Measured and Indicated - June 2018)
Opened	1949
Employment	981 employees and contractors (Red Lake Gold Mines Operations combined)

Notes: Red Lake Mines operations include the Red Lake mine, including the Red Lake and Campbell areas, the Cochenour mine and the Campbell and Red Lake processing plants. The Red Lake mine began operations in 1949 and produced 23.6 million ounces to December 2018. In 2020, Newmont Goldcorp re-branded as Newmont Corp. Red Lake Gold Mines is currently being acquired by Evolution Mining Ltd. for US\$375 million, with up to an additional US\$100 million of payments contingent on resources. The deal is expected to close by the end of March 2020.

SUGAR ZONE GOLD MINE - Harte Gold Corp. • gold producer • underground

Address	113 Tukanee Lake Road, White River, ON P0M 3G0 Tel: (416) 368-0999 Fax: (807) 822-2398 www.hartegold.com
Mine Manager	Gordon Reed, General Manager
Production Rate	575 tonnes per day
Production	2018 - 15,100 ounces of gold (pre-production estimate) 2019 - 27,316 ounces of gold 2020 - 45,000 ounces of gold (guidance)
Resources	4,243,000 tonnes at 8.12 g/t containing 1,108,000 ounces of gold (Measured and Indicated - April 2019)
Opened	2019
Employment	200 workers (approximate)

Notes: A 54 to 76 per cent increase in production is expected at Sugar Zone in 2020 as a result of increased tonnage and higher grades. Capital expenditures in 2020 are forecast at \$29.7 million. Capital projects include Middle Zone ramp development and camp upgrades. In early 2020, a two-rig drill program will commence on the TT8 Zone of Sugar Zone with an initial focus on testing the down dip potential.

TAYLOR MINE (HOLT COMPLEX) - Kirkland Lake Gold Ltd. • gold producer • underground

Address	Highway 101 East, P.O. Box 609, Matheson, ON POK 1N0 Tel: (705) 567-4862 Fax: (705) 567-4863 www.klgold.com
Mine Manager	Evan Pelletier, General Manager, Kirkland Lake Operations
Production Rate	590 tonnes per day
Production	2016 - 42,639 ounces of gold 2017 - 50,764 ounces of gold 2018 - 58,633 ounces of gold 2019 - 52,500 ounces of gold (guidance) 2020 - 130,000 ounces of gold (guidance for Holt Complex operations combined)
Resources	1,577,000 tonnes at 4.90 g/t containing 250,000 ounces of gold (Measured and Indicated - December 2018)
Opened	2015
Employment	60

Notes: The Holt Complex includes the Taylor mine, Holloway-Holt mine and Holt mill. Ore from Taylor mine is processed at Holt mill. In 2019, a 44,000-metre drilling program was conducted at Taylor focused on the 1004 Zone and West Porphyry Deposit.



IBK Capital Corp.

IBK Capital is an independent and privately owned investment banking firm which offers a full range of financial advisory services to Minerals Exploration and Mining companies.

The Exchange Tower, 130 King St. W, Suite 640
Toronto, ON, Canada M5X 1E4

Tel: (416) 360-4505 www.IBKCapital.com

TIMMINS WEST MINE - Pan American Silver Corp. - Tahoe Canada • gold producer • underground

Address	1515 Government Road South, Timmins, ON P4R 1N4 Tel: (705) 269-4344 Fax: (705) 268-1794 www.panamericansilver.com
Mine Manager	Bill Curry
Production Rate	3,300 tonnes per day (mine), 4,400 tonnes per day (mill)
Production	2016 - 162,000 ounces (estimate for Bell Creek and Timmins West mines combined) 2017 - 167,000 (Bell Creek and Timmins West mines combined) 2018 - 167,500 (guidance for Bell Creek and Timmins West mines combined) 2019 - 157,500 (guidance for Bell Creek and Timmins West mines combined) 2020 - 172,500 (guidance for Bell Creek and Timmins West mines combined)
Resources	17,000,000 tonnes at 3.27 g/t containing 1,787,000 ounces of gold (Measured and Indicated - June 2019)
Opened	2011
Employment	650 employees, 70 contractors (Timmins West and Bell Creek combined)

Notes: Ore from Timmins West Mine is processed at the Bell Creek Mill. Timmins West and Bell Creek are expected to operate through 2025. A shaft upgrade to 1,080 metres was completed at Timmins West in 2019 that is expected to reduce costs in 2020. In November 2019, Pan American Silver announced they no longer intended to sell Timmins West and Bell Creek mines.

WILLIAMS MINE (HEMLO MINE) - Barrick Gold Corporation • gold producer • underground, open pit

Address	P.O. Bag 11, Marathon, ON P0T 2E0 Tel: (807) 238-1041 Fax: (807) 238-1019 www.barrick.com
Mine Manager	Ian Butler, General Manager
Production Rate	11,500 tonnes per day
Production	2016 - 235,000 ounces of gold 2017 - 196,000 ounces of gold 2018 - 171,000 ounces of gold 2019 - 213,000 ounces of gold 2020 - 207,300 ounces of gold (guidance)
Resources	61,572,000 tonnes at 1.77 g/t containing 3,498,000 ounces of gold (Measured and Indicated - December 2018)
Opened	1985
Employment	620 workers (estimate)

Notes: In October 2019, Barrick announced the open-pit at Hemlo would be phased out and that underground mining would move to a contract mining model. This optimization will extend the operations life of mine. Currently, most of the resources and underground mill feed comes from the C-Zone at Hemlo. In 2019, exploration drilling at Hemlo confirmed down plunge extensions of C-Zone and additional C-Zone extension drilling is planned for early 2020.

YOUNG-DAVIDSON MINE - Alamos Gold Inc. • gold producer • underground

Address	Highway 566, P.O. Box 187, Matachewan, ON P0K 1M0 Tel: (705) 565-9800 Fax: (705) 565-2387 www.alamosgold.com
Mine Manager	Luc Guimond, General Manager
Production Rate	7,000 tonnes per day
Production	2016 - 170,041 ounces of gold 2017 - 200,000 ounces of gold 2018 - 180,000 ounces of gold 2019 - 185,000 ounces of gold (guidance) 2020 - 152,500 ounces of gold (guidance)
Resources	51,058,000 tonnes at 2.82 g/t containing 4,624,912 ounces of gold (Measured and Indicated - December 2018)
Opened	2012 (open pit), 2013 (underground)
Employment	630 employees, 136 contractors

Notes: Decreased production at Young-Davidson is expected in 2020 in order to allow for the completion of the tie-in of the upper and lower mines, which is expected to occur from March to June 2020. During this downtime, ore will be trucked to surface from the upper mine at a rate of approximately 2,500 tonnes per day. A total 10,500 metres of underground exploration drilling is planned at Young-Davidson in 2020. Drilling will explore the down-dip extension of the Young-Davidson ore body, below current Mineral Resources.

OTHER METAL MINES

KIDD CREEK MINE - Glencore PLC • zinc, copper, lead, silver, cadmium, indium, sulphuric acid • underground

Address	11335 Highway 655 North, P.O. Bag 2002, Timmins, ON P4N 7K1 Tel: (705) 264-5200 Fax: (705) 267-8709 www.glencore.com www.kiddoperations.ca
Mine Manager	Mark Furlotte, General Manager, Kidd Operations
Production Rate	7,900 tonnes per day
Production	2016 - 38,300 tonnes copper, 78,500 tonnes zinc, 2,292,000 ounces of silver 2017 - 39,900 tonnes copper, 72,400 tonnes zinc, 2,271,000 ounces of silver 2018 - 33,600 tonnes copper, 65,900 tonnes zinc, 1,893,000 ounces of silver 2019 - 32,000 tonnes copper, 62,400 tonnes zinc, 2,025,497 ounces of silver (estimate) 2020 - 38,000 tonnes copper, 62,900 tonnes zinc, 2,025,497 ounces of silver (estimate)
Resources	10,000,000 tonnes at 1.90 per cent copper, 4.20 per cent zinc and 48.00 g/t silver (Measured and Indicated - December 2018)
Opened	1966
Employment	850 (employees and contractors)

Notes: Kidd Creek is the world's deepest base metal mine below sea level. The company is currently mining the 9,600-foot level and the shaft extends to 9,889 feet. The mine life at Kidd is expected to continue through 2022.

LAC DES ILES MINE - Impala Platinum Holdings Ltd. - Impala Canada Ltd. • platinum group metals • underground, open pit

Address	P.O. Box 10547, Thunder Bay, ON P7B 6T9 Tel: (807) 448-2000 Fax: (807) 448-2001 www.nap.com
Mine Manager	Bryan Wilson, General Manager
Production Rate	6,755 tonnes per day (underground), 8,984 tonnes per day (mill)
Production	2016 - 158,481 ounces of palladium, 10,230 ounces of platinum 2017 - 208,923 ounces of palladium, 12,267 ounces of platinum 2018 - 242,686 ounces of palladium, 16,368 ounces of platinum 2019 - 227,500 ounces of palladium, 17,000 ounces of platinum (estimate) 2020 - 208,000 ounces of palladium, 18,000 ounces of platinum (estimate)
Resources	72,982,000 tonnes at 2.14 g/t palladium, 0.21 g/t platinum, 0.16 g/t gold, 0.06 per cent copper and 0.07 percent nickel (Measured and Indicated - July 2018)
Opened	1993 (open pit), 2006 (underground)
Employment	Over 700 (employees)

Notes: Ore from Lac des Iles Mine is shipped to Vale's Sudbury Operations for refining. North American Palladium, including Lac des Iles mine, was acquired by Impala Platinum Holdings (Implats) in a \$930-million deal that closed Dec. 13, 2019. The mine is now operated as the Implats subsidiary Impala Canada Ltd. Underground rates at the mine will be ramped up to 12,000 tonnes per day by 2021. In 2019, underground exploration drilling was conducted at C Zone, Offset Satellite (B Zone and Mystery Zone) and Roby-Offset while surface drilling was conducted in the East Mine Block. Near-mine exploration continues at Sunday Lake, with 7,300 metres of drilling conducted in 2019.



LAMONTAGNE GEOPHYSICS LTD.
GÉOPHYSIQUE LTÉE.

20 BINNINGTON COURT, KINGSTON, ONTARIO | K7M 8S3
Phone: 613-531-9950
www.lamontagnegeophysics.com

MCCREEDY WEST MINE - KGHM International Ltd. • nickel, copper, platinum, palladium • underground

Address	4 Mine Road, P.O. Box 40, Levack, ON P0M 2C0 Tel: (705) 966-5112 Fax: (705) 966-5386 www.kghm.com
Mine Manager	Steve Dunlop, General Manager
Production Rate	2,425 tonnes per day
Production	2016 – 2,100 tonnes nickel, 14,400 tonnes copper, 46,000 ounces of precious metals 2017 – 1,100 tonnes nickel, 9,400 tonnes copper, 38,000 ounces of precious metals 2018 – 900 tonnes nickel, 7,400 tonnes copper, 30,500 ounces of precious metals 2019 – 1,700 tonnes nickel, 1,300 tonnes copper, 4,115 ounces of precious metals (estimate) 2020 – 1,700 tonnes nickel, 1,300 tonnes copper, 4,115 ounces of precious metals (estimate).
Resources	12,972,000 tonnes at 0.91 per cent copper, 1.25 per cent nickel, 0.17 g/t platinum, 0.23 g/t palladium and 0.07 g/t gold containing 118,467 tonnes copper, 161,773 tonnes nickel, 68,867 ounces platinum, 93,977 ounces palladium and 29,707 ounces gold (Sudbury Operations Total Measured and Indicated – December 2014)
Opened	2004
Employment	208 workers (estimate)

Notes: McCreedy ore is processed at Vale's Clarabelle Mill in Sudbury. In 2019, KGHM Sudbury operations transitioned from mining the Morrison mine to the McCreedy West mine, which had been on care and maintenance since 2015. In 2019, KGHM's Victoria project, a planned underground copper-nickel mine located 35 kilometres west of Sudbury, was submitted to the Canadian Environmental Assessment Agency (CEAA) for comment and it was determined that an environmental assessment would not be required.

SUDBURY OPERATIONS - VALE - Coleman Mine, Copper Cliff North Mine, Creighton Mine, Garson Mine, Totten Mine Vale S.A • nickel, copper, cobalt, platinum group metals, gold, silver, sulphuric acid, liquid sulphur dioxide • underground

Address	Copper Cliff, ON P0M 1N0 Tel: (705) 682-4211 Fax: (705) 682-5319 www.vale.com
Production Rate	35,000 tonnes per day (Clarabelle Mill capacity)
Production	2016 – 80,400 tonnes nickel, 121,600 tonnes copper, 882 tonnes cobalt, 98,000 ounces of gold, 322,000 ounces of palladium, 166,000 ounces platinum, 2,165,000 ounces silver 2017 – 61,900 tonnes nickel, 98,300 tonnes copper, 840 tonnes cobalt, 74,000 ounces of gold, 214,000 ounces of palladium, 144,000 ounces platinum 1,785,440 ounces of silver (estimate) 2018 – 50,600 tonnes nickel, 72,300 tonnes copper, 520 tonnes cobalt, 84,717 ounces of gold, 218,000 ounces of palladium, 135,000 ounces platinum, 1,339,080 ounces of silver (estimate) 2019 – 58,000 tonnes nickel, 93,394 tonnes copper, 626 tonnes cobalt, 72,611 ounces of gold, 203,300 ounces of palladium, 145,220 ounces platinum, 1,331,427 ounces of silver (estimate) 2020 – 59,840 tonnes nickel, 114,478 tonnes copper, 612 tonnes cobalt, 92,916 ounces of gold, 260,200 ounces of palladium, 223,000 ounces platinum, 1,300,819 ounces of silver (estimate)
Resources	61,700,000 tonnes at 1.40 per cent nickel, 1.78 per cent copper, 0.03 per cent cobalt, 1.20 g/t platinum, 1.50 g/t palladium, 0.50 g/t gold (Measured and Indicated – December 2018)
Employment	Nearly 4,000 (Vale Sudbury Operations total workforce)

Notes: Vale Ontario Operations include five active mines, the Clarabelle mill, the Copper Cliff smelter/refinery complex and the Port Colborne cobalt refinery. Work at Vale's \$750-million Copper Cliff Deep mine expansion project in Sudbury is expected to be completed by 2021. The mine will employ more than 400 workers when in operation. Vale is currently conducting a feasibility study for a Phase 2 expansion of Copper Cliff Deep that would incorporate additional deposits from the Kelly Lake area into the mine.

COLEMAN MINE

Mine Manager	Brent Salem
Production Rate	618,000 tonnes per year
Opened	1992

COPPER CLIFF NORTH MINE

Mine Manager	Franco Cazzola
Production Rate	746,000 tonnes per year
Opened	1886

CREIGHTON MINE

Mine Manager	Alan Vermeersch
Production Rate	608,000 tonnes per year
Opened	1902

GARSON MINE

Mine Manager	Rick Fillion
Production Rate	655,000 tonnes per year
Opened	1907-1986; 1994 (reopened)

TOTTEN MINE

Mine Manager	John Ryan
Production Rate	710,000 tonnes per year
Opened	2014

SUDBURY OPERATIONS – GLENCORE – Fraser Mine, Nickel Rim South Mine – Glencore PLC • nickel, copper, cobalt, platinum group metals, sulphuric acid • underground

Address	6 Edison Road, Falconbridge, ON P0M 1S0 Tel: (705) 693-2761 Fax: (705) 966-6530 www.glencore.com
Production Rate	6,670 tonnes per day
Production	2016 – 24,127 tonnes nickel, 48,150 tonnes copper, 505 tonnes cobalt 2017 – 22,928 tonnes nickel, 40,427 tonnes copper, 480 tonnes cobalt (estimate) 2018 – 22,806 tonnes nickel, 38,831 tonnes copper, 477 tonnes cobalt (estimate) 2019 – 22,806 tonnes nickel, 38,831 tonnes copper, 477 tonnes cobalt (estimate) 2020 – 18,336 tonnes nickel, 12,240 tonnes copper, 264 tonnes cobalt (estimate)
Resources	28,900,000 tonnes at 2.00 per cent nickel, 2.30 per cent copper, 0.05 per cent cobalt, 1.02 g/t palladium, 0.90 g/t platinum (Measured and Indicated – December 2018)
Employment	1,300 employees, 500 contractors (approximate)

Notes: Glencore's Sudbury Integrated Nickel Operations consist of the Nickel Rim South and Fraser underground mines, the Strathcona Mill and the Sudbury Smelter. Glencore's Sudbury production is shipped to the company's Nikkelverk refinery in Norway for further processing. The Nickel Rim South Mine is currently Sudbury's largest mining operation, producing approximately 14,000 tonnes of nickel a year. The company's Onaping Depth Project in Sudbury is currently in construction. The deposit extends to a depth of 2,600 metres and will be Glencore's deepest mine. First ore production is expected in 2023 and full production is expected in 2025. The mine life at Glencore's Sudbury Integrated Nickel Operations currently extends through 2034.

FRASER MINE

Manager	Gary Potts, Mine Director
Production Rate	702,631 tonnes per year
Opened	1968

NICKEL RIM SOUTH MINE

Manager	Christian Bruneau, Director
Production Rate	1,299,590 tonnes per year
Opened	2010

TOMCLID IRON MINE - Ferromin Inc. • iron as magnetite • quarry

Address	South Canonto Township, ON www.ferromininc.com
Production	2016 – 8,000 tonnes of ore (approximate) 2017 – 15,000 tonnes of ore (approximate) 2018 – 0 tonnes of ore 2019 – not available 2020 – not available
Resources	Three million tonnes averaging 40 per cent Fe (1993); reserves estimate has not been adjusted to reflect production from the deposit
Opened	1997 (reopened on an “as-needed basis”)

Notes: Production was restarted in late 1997 by Tomclid Iron Mines Ltd. and operations have continued on an as-needed basis by Ferromin Inc. Magnetite is mined and crushed as high-density aggregate for use in heavy concrete applications including radiation shielding.

DIAMOND MINES

VICTOR DIAMOND MINE - De Beers Canada Inc. • diamond • open pit

Address	119 Pine Street South, Suite 310, Timmins, ON P4N 2K3 Tel: (705) 268-0988 Fax: (705) 268-0179 canada.debeersgroup.com
Mine Manager	Alistair Skinner, Manager of Operations
Production Rate	7,400 tonnes per day
Production	2016 – 596,000 carats 2017 – 724,000 carats 2018 – 936,000 carats 2019 – 421,000 carats 2020 – 0 carats (closed)
Resources	1,400,000 tonnes at 0.21 carats per tonne containing 338,000 carats of diamonds (Measured and Indicated – December 2017)
Opened	2008
Employment	170 employees, 134 contractors (at closure)

Notes: Victor Mine is one of 18 kimberlite pipes discovered on the property, 16 of which are diamondiferous. Victor opened in 2008 and was Ontario's first diamond mine. In 2019, the final load of ore was trucked from Victor pit on March 5, stockpile was processed until May 25, and plant shutdown was completed by June. Eighty staff continue to work at Victor in reclamation. Site takedown and environmental monitoring is expected to take three to five years after mining ceased.

Major Industrial Mineral Producers

Blue Mountain Operations

Covia Canada Ltd.

• nepheline syenite • open pit (Mining Act)

Location Methuen Township
Address P.O. Box 2000
Havelock, ON K0L 1Z0

Contact Alex Vanags, P.Eng.,
Plant Manager
(705) 877-2500 ext. 645

Employees 230

Goderich Evaporator Plant

Compass Minerals Canada Corp.

• salt in brine (Oil, Gas and Salt Resources Act)

Location Goderich Township
Address Evaporation Plant
P.O. Box 100
245 Regent Street
Goderich, ON N7A 3Y5

Contact (519) 524-8338

Employees 90

Goderich Salt Mine

Compass Minerals Canada Corp.

• rock salt • underground (Mining Act)

Location Goderich Township
Address P.O. Box 370
300 North Harbour Road
Goderich, ON N7A 3Y9

Contact (519) 524-8351

Employees 380

Hagersville Mine

Gebr. Knauf KG

• gypsum • underground (Mining Act)

Location Oneida Township
Address P.O. Box 99
Hagersville, ON N0A 1H0

Contact (905) 768-3331

Employees 44

Ojibway Mine

K+S Windsor Salt Ltd.

• rock salt • underground (Mining Act)

Location Windsor - Sandwich Township
Address P.O. Box 7008
200 Morton Drive
Windsor, ON N9J 3W9

Contact (519) 966-2142

Employees 206

Penhorwood Mine

IMERYS Talc

• talc • open pit (Mining Act) • primary plant • micronising plant

Location Quarry and primary processing plant - Penhorwood Township
Micronising plant - Timmins
Address 100 Water Tower Road
Timmins, ON P4N 7J5

Contact (705) 268-2208

Employees 65 (130 at peak)

St. Lawrence Mine

Canadian Wollastonite

• wollastonite • open pit (Mining Act)

• diopside • granite aggregate

Location Seeleys Bay (Kingston)
Address 6675 Highway 15
Seeleys Bay, ON K0H 2N0
Contact (613) 387-2734,
Bob Vasily: (613) 387-2734 ext. 101

Bob.Vasily@canadianwollastonite.com

Employees summer - 16, winter - two

Tatlock Quarry

OMYA (Canada) Inc.

• calcium carbonate • open pit (Aggregate Resources Act)

Location Tatlock Quarry
(Darling Township)
Plant - Perth

Address P.O. Box 245
Perth, ON K7H 3E4

Contact (613) 267-5367

Employees 400

Windsor Evaporation Facility

K+S Windsor Salt Ltd.

• salt in brine (Oil, Gas and Salt Resources Act)

Location Windsor - Sandwich Township
Address Evaporation Plant
P.O. Box 7008
30 Prospect Avenue
Windsor, ON N9C 3G3

Contact (519) 255-5404

Employees 92

Other Industrial Mineral Producers

Spanish River Carbonatite

Boreal Agrominerals Inc.

• carbonatite, vermiculite • open pit (Aggregate Resources Act)

Location Venturi Township
Address Suite 206,
57 Mill Street North
Brampton, ON L6X 1S9

Contact (905) 456-5436

Website www.borealagrominerals.ca

Employees 15

Gemstone and Mineral Specimen Mines and Quarries


Producers	Products	General Information
Amethyst Mine Panorama - Precious Purple Gemstones/ Amethyst Gift Centre		
Steve and Tim Lukinuk 400 Victoria Avenue East, Thunder Bay, ON P7C 1A5 (807) 622-6908 info@amethystmine.com www.amethystmine.com	<ul style="list-style-type: none"> • specimens • decorative stone • landscaping stone • slabbing and tumbling stone • jewelry, giftware, carvings • faceted gem stones 	McTavish Township <i>Tourist attraction</i> <ul style="list-style-type: none"> • pick your own site • mine tours
AquaRose Gems and Minerals - Beryl Pit/Rose Quartz Pit		
Dave Patterson 1327 Lower Craigmont Road, RR 2, Combermere, ON K0J 1L0 (613) 756-1361 berylpit@nexicom.net	<ul style="list-style-type: none"> • mineral specimens • decorative stone • landscaping stone • slabbing & tumbling stone • quartz, feldspar, 35 accessory minerals in a complex pegmatite 	Lyndoch Township <i>Tourist attraction</i> <ul style="list-style-type: none"> • fee for collecting site • mine tours
Assiniboia Amethyst Mine		
Paul and Thelma Smitham Wawa, ON (705) 856-4221 (winter) (705) 852-0686 (summer) www.assiniboiaamethystmine.weebly.com	<ul style="list-style-type: none"> • mineral specimens 	McTavish Township
Auralite 23 Mine (Amethyst)		
Howard Pilsmaier Thunder Bay, ON (807) 629-4300 auralite@hotmail.com www.auralite23canada.com	<ul style="list-style-type: none"> • mineral specimens • polished and tumbled stone • jewelry • tiles and countertop stone 	Tartan Lake Area <i>Tourist attraction</i> <ul style="list-style-type: none"> • guided tours available
Blue Points Amethyst Mine		
Lyndon Swanson 5 Road North, Pearl, ON P0T 2M0 (218) 409-1584 (winter) (807) 629-1127 (summer) lynswan1@lakenet.com	<ul style="list-style-type: none"> • specimens • decorative stone 	McTavish Township <i>Tourist attraction</i> <ul style="list-style-type: none"> • pick your own site
Boulder Creek Amethyst Quarry		
Chuck Anderson 27 3rd Street, Nipigon, ON P0T 2J0 (807) 887-2615 bouldercreek@shaw.ca http://mininglifeonline.net/company_page_487.html	<ul style="list-style-type: none"> • specimens • giftware 	McTavish Township

Producers	Products	General Information
Diamond Willow Amethyst Mine		
Brandon Leroux and Carol Fayle 5 Road North, Pearl, ON (807) 627-5515 diamondwillowamethyst@hotmail.com https://m.facebook.com/Diamond-Willow-Amethyst-Mine-961765537215664/	<ul style="list-style-type: none"> • specimens • decorative stone • landscaping stone • slabs • tumbling stone • jewelry 	McTavish Township <i>Tourist attraction</i> <ul style="list-style-type: none"> • pick your own site • mine tours
Princess Sodalite Mine (operation: May 1 to October 12)		
Andy Christie Rock Shop and Rock Farm 31241 Highway 28 East, Bancroft, ON K0L 1C0 (613) 332-8274 Andy@PrincessSodaliteMine.ca http://www.princesssodalitemine.ca/	<ul style="list-style-type: none"> • specimens • decorative stone • landscaping stone • giftware • jewelry 	Bancroft <i>Tourist attraction</i> <ul style="list-style-type: none"> • pick your own site
Purple Haze Mine (Amethyst)		
Michael and Sandra Grieve 22 Knight Street, Thunder Bay, ON P7A 5M2 (807) 345-6444 info@purplehazeamethyst.com www.purplehazeamethyst.com	<ul style="list-style-type: none"> • specimens • giftware • jewelry • landscaping stone • decorative stone 	Tartan Lake Area
Windy Ridge Amethyst Quarry		
Larry Kowtusi 71 Stover Street South, Norwich, ON N0J 1P0 (519) 468-3090 windyridge@live.ca	<ul style="list-style-type: none"> • specimens • giftware • garden rock 	McTavish Township



Serving the mining industry for over 40 years.

204-338-7953
info@customheli.com
www.customheli.com



GEOPHYSICAL SERVICES

- INDUCED POLARIZATION
- Magnetic & VLF
- EM MaxMin
- EM Pulse
- Gravity
- GPS
- Compilation
- Interpretation

Pierre Simoneau, M.Sc. P.Geol
Ontario Regional Manager
Ontario 807-707-7585
Member APGO, NWOPA, OGQ, AIGNB
psimoneau@geosig.ca

Quebec 418-877-7382
geosig@geosig.ca www.geosig.ca



Leaders in Quality, Innovation and Service

Actlabs has six locations in Ontario to better serve the Ontario mining and exploration markets. With our newly-opened preparation lab in **North Bay** and full-serve labs in **Ancaster, Thunder Bay, Geraldton, Timmins and Dryden**, our local presence is ready to help you with your analytical needs no matter where you are located.

www.actlabs.com

Lime and Specialty Limestone Producers

Beachville Operations

Carmeuse Lime (Canada) Limited

- limestone: agricultural lime, crushed • high calcium lime • hydrator

Location Zorra Township

Address 3746-81 37th Line, Oxford County Road 6
Ingersoll, ON N5C 3K5

Contact (519) 423-6283

Website www.carmeusena.com

Employees 175

Blair Quarry

A.L. Blair Construction Ltd.

- limestone: agricultural lime, crushed

Location Finch Township

Address 7 Labrosse Street, P.O. Box 220
Moose Creek, ON K0C 1W0

Contact (613) 538-2271 (head office)

Website www.alblairconstruction.com

Employees 10

Bucke Quarry

Miller Minerals (Division of Miller Paving Co.)

- limestone: crushed, agricultural lime

Location Bucke Township

Address P.O. Box 248
New Liskeard, ON P0J 1P0

Contact (705) 672-2282

Employees Six

Dundas Operations

Carmeuse Lime (Canada) Limited

- dolomitic lime

Location Town of Flamborough

Address West Flamborough Township
600 Highway 5, Gate 1, Building 13, P.O. Box 2029
Dundas, ON L9H 5E2

Contact (905) 628-8800

Website www.carmeusena.com/locations/dundas-operation

Employees 53

Dundas Quarry

Lafarge Canada Inc.

- dolostone: crushed • metallurgical grade limestone

Location Town of Flamborough

Address West Flamborough Township
628 Highway 5

Contact Dundas, ON L9H 5E2

Contact (905) 527-2744, (905) 527-3671

Website www.lafarge.ca/en

Employees 85

Meldrum Bay Quarry

Lafarge Canada Inc.

- dolostone: crushed • metallurgical and chemical stone, aggregate

Location Dawson Township, Manitoulin Island

Address 95 Mississauga Lighthouse Road, P.O. Box 6
Meldrum Bay, ON P0R 1R0

Contact (705) 283-3011

Northern Operation

Carmeuse Lime (Canada) Limited

- high calcium lime (limestone quarried in Michigan, plant in Blind River)

Location Blind River

Address Highway 17 East, P.O. Box 1690
Blind River, ON P0R 1B0

Contact (705) 849-2201

Website www.carmeusena.com

Employees 26

Sydenham Quarry

E.C. King Contracting Division of Miller Paving

- dolostone: crushed • dolomitic lime

Location Sydenham Township

Address 2125 20th Avenue East, P.O. Box 457
Owen Sound, ON N4K 5P7

Contact (519) 376-6140

Trap Rock Producers

Armstrong Quarry

AECON Mining Inc.

• basalt • diabase

Location Armstrong, Ontario
Address Aecon Mining Inc.
c/o Fudge & Associates
160 Bryan Road
North Bay, ON P1C 1C2
Contact (705) 472-3053

Bridgewater Trap Rock Mine

Danford Granite Ltd.

• gabbro • mineral wool raw material, high-performance aggregate, railway ballast, filter stone

Location Elzevir Township (northeast of Madoc)
Address P.O. Box 749, 326 Durham Street
Madoc, ON K0K 2K0
Contact (613) 473-2468
info@danfordconstructionltd.com
Website www.danfordconstructionltd.com

Havelock Quarry

Drain Bros. Excavating Ltd.

• basalt • rail ballast, rock wool, high-quality asphalt

Location Belmont Township (east of Havelock)
Quarry - 6830 Highway 7, Belmont-Havelock
Mailing address
2130 8th Line Road North
Douro-Dummer, ON K0L 2H0
Contact (705) 639-2301
info@drainbros.ca

Hillsport Quarry

AECON Mining Inc.

• diabase • mineral wool raw material, high-performance aggregate, railway ballast, filter stone

Location Hillsport, Ontario
Address Aecon Mining Inc.
c/o Fudge & Associates
160 Bryan Road
North Bay, ON P1C 1C2
Contact (705) 472-3053

I.K.O. Quarry

I.K.O. Industries Ltd.

• andesite • roofing granules, HL-1 aggregate

Location Madoc Township
Address P.O. Box 839, 105084 Highway 7
Madoc, ON K0K 2K0
Contact (613) 473-0430

Iroquois Falls Quarry

AECON Mining Inc.

• basalt • gabbro • diabase

Location Iroquois Falls, Ontario
Address Aecon Mining Inc.
c/o Fudge & Associates
160 Bryan Road
North Bay, ON P1C 1C2
Contact (705) 472 3053

MRT Traprock

MRT Aggregates Inc.

• gabbro • HL-1, DFC, OFC, SMA, FC-1, FC-2 • railway ballast

Location Methuen Township
Address c/o MRT Aggregates Inc.
4999 County Road 46
Havelock, ON K0L 1Z0
Contact (705) 877-8423

Ontario Trap Rock Quarry

Ontario Trap Rock Ltd.

• diabase • mineral wool raw material, high-performance aggregate, railway ballast, filter stone

Location Bruce Mines
Address 9630 King's Highway 17
Bruce Mines, ON P0R 1C0
Contact (705) 785-3833

Smelter Bay Aggregates Quarry (owned by Lafarge)

Smelter Bay Aggregates

• diabase • construction aggregate, abrasives, roofing granules

Location Nestorville (five kilometres west of Thessalon)
Address Boundary Road Industrial Park, P.O. Box 400
Thessalon, ON P0R 1L0
Contact (705) 842-2597

Brick Producers

Brampton Brick Ltd.

• shale • clay brick

Address 225 Wanless Drive
Brampton, ON L7A 1E9
Contact (905) 840-1011
www.bramptonbrick.com

Cheltenham Quarry

Location Brampton, Chinguacousy Township

Hungry Hollow Quarry (Inactive)

Location Lambton Shores, West Williams Township
Employees 68

Jazbrick Group (formerly Century Brick)

• shale • clay brick

Address 22 Airport Road
Brantford, ON N3T 5R7
Contact (416) 741-4498 or 1 (888) 772-8099
www.jazbrick.com

Georgetown Quarry

Location Esquesing Township

Meridian Brick Ltd. (formerly Forterra Brick, Hanson Brick)

• shale • clay brick

Address 5155 Dundas Street West
Burlington, ON L7R 3Y2
Contact 1 (800) 263-6229, (905) 335-3401
jan.jensen@meridianbrick.com

Aldershot Quarry

Location City of Burlington, East Flamborough Township

Burlington Quarry

Location City of Burlington, Nelson Township

Niagara-on-the-Lake Quarry

Location Niagara Township
Employees 150-175

Cement Producers' Quarries

Bath Quarry

Lafarge Canada Inc.

• limestone • cement

Location Ernestown Township
Address Highway 33, P.O. Box 160
Bath, ON K0H 1G0
Contact (613) 352-7711
Employees 110 at the plant and 10 at the quarry

Bowmanville Quarry

St. Marys Cement Inc.

• limestone • cement

Location Darlington Township
Address 400 Waverley Road South
Bowmanville, ON L1C 3K3
Contact (905) 623-3341
Employees 117 at the plant and 18 at the quarry

Ogden Point Quarry

CRH Canada Group Inc.

• limestone • cement

Location Cramahe Township (quarry); plant in Mississauga
Address 176 Victoria Beach Boulevard, P.O. Box 160
Colborne, ON K0K 1S0
Contact (905) 355-2534
Website www.crhcement.com
Employees 160 at the plant and 21 at the quarry

Picton Quarry

Lehigh Cement (Heidelberg Cement Group)

• limestone • cement

Location Sophiasburg Township
Address 1370 Highway 49 South
Picton, ON K0K 2T0
Contact (613) 476-3233
Kreg Roblin, kreg.roblin@lehighhanson.com
Website www.lehighhanson.com
Employees 136

St. Marys Quarry

St. Marys Cement Inc.

• limestone • cement

Location Blanshard Township
Address 585 Water Street South, P.O. Box 1000
St. Marys, ON N4X 1B6
Contact (519) 284-1020
Employees 115-120 at the plant and eight at the quarry

Federal White Cement

• cement (they purchase limestone from Lafarge's Carmeuse quarry)

Address P.O. Box 1609
Woodstock, ON N4S 0A8
Contact (519) 485-5410
Employees 50-60

Dimension Stone and Specialty Aggregate Producers

A and A Natural Stone Ltd.

Address Concession 17 Keppel Township, RR 1
P.O. Box 967, Wiarton, ON N0H 2T0
Contact Dawn Forbes, Manager
Tel: (519) 534-5966 | (519) 534-5540
Fax: (519) 534-2435
aanaturalstone@forbessandandgravel.ca
Quarries Keppel Township (Owen Sound)

Allstone Quarry Products Inc.

Address 16105 Highway 27, Schomberg, ON L0G 1T0
Contact Peter Melo
Tel: (905) 939-8491 | 1 (800) 263-1270
Fax: (905) 939-2797 | info@allstonequarry.com
Website www.allstonequarry.com
Quarries Bigwood Township (near Sudbury)

Aqua Rose Gems and Minerals

Address 1327 Lower Craigmont Road
RR 2 Combermere, ON K0J 1L0
Contact Dave Patterson
Tel: (613) 756-1361 | berylpit@nexicom.net
Quarries Lyndoch Township (near Bancroft)

Arriscraft International Inc.

Address 875 Speedsville Road, P.O. Box 3190
Cambridge, ON N3H 4S8
Contact Trevor Cochrane | trevor.cochrane@arriscraft.com
Tel: (519) 653-3275 | 1 (800) 265-8123
Fax: (519) 653-1337 | solutions@arriscraft.com
Website www.arriscraft.com
Quarries Albemarle Township (near Owen Sound)

Attia Quarries

Address 6 Satchell Boulevard, Toronto, ON M1C 3B4
Contact Eid Attia | eidattia3@gmail.com
Tel: (416) 286-7233 | (705) 325-5068
(416) 453-2978 | Fax: (416) 286-5693
Website www.attiaquarry.com
Quarries 6414 County Road 169, Rama Township
Employees Four

Birkendale Natural Stone

Address 144 Stephenson Road 8 East, Huntsville, ON P0B 1M0
Contact Mimi Lawrenson
Tel: (705) 385-8000 | Fax: (705) 385-3260
info@ontariostonedepot.com
Website www.ontariostonedepot.com
Quarries Franklin Township (near Huntsville)

Block and Stone Resource Group Inc.

Address 370 2nd Avenue Southeast, Owen Sound, ON N4K 5T1
Contact Andrew Negus or Ben Snyder
Tel: (519) 416-7625 | 1 (855) 416-7626
Fax: (519) 416-7626 | dsnyder@bsrg.ca
Website www.bsrg.ca
Quarries Amabel Township (near Wiarton)
Employees 18-48

Bot Aggregates Ltd.

Address 6791 Concession Road B-C, Ramara, ON L0K 1B0
Mailing address 1224 Speers Road, Oakville ON L6L 2X4
Contact Tel: 1 (877) 898-2688 | (905) 827-4167
Fax: 1 (866) 268-4177
generalinquiry@botconstruction.ca
Website www.botconstruction.ca
Quarries Sebright (near Orillia)

Brent Quarries

Address 3841 Muskoka District Road 118 West
Port Carling, ON P0B 1J0
Contact Ron Brent
Tel: (705) 765-6447 | inquiry@brentquarry.com
Website www.brentquarry.com
Quarries Medora, Humphrey and Watt townships
(near Parry Sound)

Bruce Peninsula Stone Ltd.

Address 451 Mar Sideroad
South Bruce Peninsula, ON N0H 2T0
Contact Eric Shouldice, Manager
Tel: (519) 534-3991, (519) 935-3333
Fax: (519) 534-4191
office@brucepeninsulastoneltd.com
Website www.brucepeninsulastoneltd.com
Quarries Amabel Township, Albemarle Township,
Lindsay Township (near Owen Sound)

Callander Industries Ltd.

Address P.O. Box 121, Callander, ON P0H 1H0
Contact Gary M. Mote
Tel: (705) 752-2396 | Fax: (705) 752-5643
calind@sympatico.ca
Website www.callanderindustries.com
Quarries McAuslan Township, Jocko Township,
Garrow Township (North Bay)

Canadian Colour Rock Inc.

Address 244 Copper Street, Suite 301, Sudbury, ON P3E 2C2
Contact H. Tsambis, Manager
Tel: (705) 690-0300 | jtskakoon@gmail.com
Quarries Gordon Township, Robinson Township
(Manitoulin Island), Aylmer Township (near Sudbury)

Dimension Stone and Specialty Aggregate Producers

Colonial Brick and Stone Inc.

Address 5956 Perth Road 119, Brunner, ON N0K 1C0
Contact Elroy Wagler
Tel: (519) 595-4261 | Fax: (519) 595-2399
dwight@colonialbrickandstone.com
Website www.colonialbrickandstone.com
Quarries Robinson Township (Manitoulin Island)

Coloured Aggregates Inc.

Address Unit 12, 158 Don Hillock Drive, Aurora, ON L4G 0G9
Contact Jeff Oravec | jeff_oravec@colouredaggregates.com
Tel: (416) 491-0230 | 1 (800) 465-5066
Fax: (416) 494-1014
Website www.colouredaggregates.com
Quarries Canonto Township magnetite (near Kingston),
Ashby Township marble, Marmora mill

Credit Valley Quarries Co. Ltd.

Address 14550 Heritage Road, Caledon, ON L7C 1P5
Contact Tel: (905) 877-3686 | Fax: (905) 877-3686
stone@creditvalleyquarries.com
Website www.creditvalleyquarries.com
Quarries Chingacousy Township (near Caledon)

Cushman Stone and Gravel

Address P.O. Box 161, 166 Savage Settlement Road
Novar, ON POA 1R0
Contact Jim Cushman, Owner
Tel: (705) 789-7830 | Fax: (705) 789-7830
Quarries Perry Township (near Huntsville)

Cut Above Natural Stone

Address 7172 Concession B-C, Ramara, ON L3V 0K7
Contact Scott Gareau, Owner
Tel: (705) 327-1158, 1 (888) 557-7625
Fax: 1 (888) 349-7625
sales@cutabovenaturalstone.com
Website www.cutabovenaturalstone.com
Quarries Rama Township (near Orillia)

Dufferin Aggregates

Address 2300 Steeles Avenue West, 4th floor
Concord, ON L4K 5X6
Contact Jeff Benedict, Sales
Tel: 1 (855) 225-5332 | Fax: (905) 761-5905
Website www.dufferinaggregates.com
Quarries Flamborough, Acton, Carden, Buckhorn, Milton

Ebel Quarries Inc.

Address 161 Old Oliphant Road, P.O. Box 69
Wiarton, ON N0H 2T0
Contact Mark Ebel, Vice-President
Tel: (519) 534-0380 | 1 (877) 614-4406
Fax: (519) 534-0077 | office@ebelquarries.com
Website www.ebelquarries.com
Quarries Amabel Township (near Owen Sound)

Fowler Construction Company Limited

Address 1206 Rosewarne Drive, PO Box 630
Bracebridge, ON P1L 1T9
Contact Tel: (705) 645-2214 | 1 (800) 268-7687
Fax: (705) 645-5025 | info@fowler.ca
mbalfe@fowler.ca
Website www.fowler.ca
Quarries McDougall Township (near Parry Sound),
Rama Township (near Orillia), MacAuley Township
(near Bracebridge)

Georgian Bay Marble and Stone Inc.

Address 3555 Bruce County Road 13, Wiarton, ON N0H 2T0
Contact Carl Anson Barfoot, Owner
Tel: (519) 534-3992 | Fax: (519) 534-3586
georgianbaymarble@bellnet.ca
Website www.gbmstone.com
Quarries Amabel Township (near Owen Sound)

Harold Sutherland Construction

Address 323545 East Linton Sideroad West, RR 2
Kemble, ON N0H 1S0
Contact Jennifer Sutherland
Tel: (519) 376-5698 | Fax: (519) 371-6121
amorrison@walkerind.com
Website www.hsc-ltd.com
Quarries Keppel Township, Lindsay Township, St. Vincent
Township (near Owen Sound)

Hilltop Stone and Supply Inc.

Address P.O. Box 241, Georgetown, ON L7G 4Y5
Contact J. Ferraro
Tel: (416) 571-8775, (905) 877-8587
Fax: (905) 877-0138 | info@hilltopstone.ca
Website www.hilltopstone.ca
Quarries 11679 17th Sideroad, Halton Hills, Equesing
Township (near Brampton)
Employees 10

Hope Bay Quarry Inc.

Address 1664 Bruce County Road 9, Wiarton, ON N0H 2T0
Contact Paul Bridge
Tel: (226) 668-8268 | Cell: (519) 378-8766
info@hopebayquarry.ca
Website www.hopebayquarry.ca
Quarries Albemarle Township (near Wiarton)

J.C.Rock Ltd.

Address 4337 Burnside Line, Unit 1, Orillia, ON L3V 6H4
Contact Cynthia Lis
Tel: 1 (877) 326-4006, (705) 326-4000
Fax: (705) 329-2473 | sales@jcrock.ca
Website www.jcrock.ca
Quarries Norland (north of Lindsay), Crookston
(north of Belleville)

Dimension Stone and Specialty Aggregate Producers

Jeff Parnell Contracting Ltd.

Address 1199 Connaught Drive, Ennismore, ON K0L 1T0
Contact Brian Aziz
Tel: (705) 292-6587 | Fax: (705) 292-6587
sales@jeffparnellcontracting.com
Website www.jeffparnellcontracting.com
Quarries Galway Township (near Peterborough)

John Bacher Construction Limited

Address 5054 Muskoka Road 117, P.O. Box 190
Dorset, ON P0A 1E0
Contact Eric Doig
Tel: (705) 787-5038 (General Manager)
(705) 766-0204 | Fax: (705) 766-1264
kathleen@johnbacherconstruction.com
Website www.johnbacherconstruction.com
Quarries McClintock Township (near Huntsville)

Johnston Quarry

Address 1148 Blare Hampton Road, Minden, ON K0M 2K0
Contact Mervin Johnston
Tel: (705) 489-2829 | Fax: (705) 489-2829
Quarries Galway Township (near Peterborough)

Keystone Granite

Address 2451 Highway 60, P.O. Box 5287
Huntsville, ON P1H 2K6
Contact Joelayne Hutchins | joelayne@keystonegranite.ca
Tel: (705) 783-6370 | Fax: (705) 788-2655
Website www.keystonegranite.ca
Quarries Lake of Bays Township (near Huntsville)

Limberlost Stone Inc.

Address 1692 Highway 6, Town of South, ON N0H 2T0
Contact Tim Arnold
Tel: (519) 793-3830 | Fax: (519) 793-3994
info@limberloststone.com
Website www.limberloststone.com
Quarries Albemarle Township (near Owen Sound)

McFadyen's Stone Quarry

Address 1020 Old Highway, RR 4, Huntsville, ON P1H 2J6
Contact Cindy McFadyen, Administrator
Tel: (705) 635-2983 | Fax: (705) 635-9706
mcfadyenstone@hotmail.com
Quarries Franklin Township (near Huntsville)
(seasonal operations)

Mill Lake Stone Quarry Limited

Address RR 3, Compartment 4, Parton Road
Parry Sound, ON P2A 2W9
Contact Ted Hall, General Manager
Tel: (705) 746-9882 | ted@milllakestonequarry.com
Website milllakestonequarry.com
Quarries McDougall Township (near Parry Sound)

Miller Paving Ltd.

Address 356 Miller Road, P.O. Box 270, Brechin, ON L0K 1B0
Contact Rob Lindsay
Tel: (705) 484-1101 ext. 31 | rlindsay@millergroup.ca
Website www.millergroup.ca
Quarries Carden Township (Brechin Quarry)

Miron Topsoil Ltd.

Address P.O. Box 1377 (Quarry: 999932 Highway 11)
New Liskeard, ON P0J 1P0
Contact Edmond Miron
Tel: (705) 647-5823 | (705) 563-2430 (quarry)
Fax: (705) 647-9322
Website www.mirontopsoil.com
Quarries Harley Township (Thornloe, ON)

Nelson Granite Limited

Address P.O. Box 178, Vermilion Bay, ON P0V 2V0
Contact Craig Spence | craig.spence@nelsongranite.com
Tel: (807) 227-2650 | Fax: (807) 227-2722
Website www.nelsongranite.com
Quarries Docker Township, Forgotten Lake Area, Wonderland Lake Area, Red Deer Lake Area (near Kenora)

Odawa Stone Ltd.

Address 1079-A Sheshegwaning Road
Sheshegwaning, ON P0P 1X0
Contact Dennis Blackburn
Tel: (705) 283-3292 | Fax: (705) 283-3481
sales@odawastone.com
Website www.odawastone.com
Quarries Robinson Township, Silver Water, Manitoulin Island
(near Sheshegwaning)

OMYA (Canada) Inc.

Address 18595 Highway 7 West, P.O. Box 245
Perth, ON K7H 3E4
Contact Larry Sparks
Tel: (613) 267-5367 | 1 (800) 267-8920
Fax: (613) 267-5408 | larry.sparks@omya.com
Website www.omya.com
Quarries Darling Township (near Perth)

Owen Sound Ledgerock Limited

Address 138436 Ledgerock Road, RR 5, P.O. Box 445
Owen Sound, ON N4K 5P7
Contact Tom Stobbe
Tel: (519) 376-0366 | Fax: (519) 376-7078
info@ledgerock.com
Website www.ledgerock.com
Quarries Amabel, Keppel, Albemarle Townships
(near Owen Sound)

Dimension Stone and Specialty Aggregate Producers

Redstone Quarries

Address 1128 County Road 49, P.O. Box 424
Bobcaygeon, ON KOM 1A0
Contact Ted Sturman | tsturman@trytel.net
Tel: (705) 738-4100 | Fax: (705) 738-4100
Website www.redstonequarries.com
Quarries Harvey, Galway, Cavendish Townships
(near Peterborough)

Rice and McHarg Ltd.

Address 40 Cleaveholm Drive, Georgetown, ON L7G 3E1
Contact Joe Rice or Ivan Rice, Owners
(905) 877-2129 | jrice15@cogeco.ca
Quarries 12224 5th Line, Limehouse, ON LOP 1H0
(Esquesing Township)

Rideauview Contracts Ltd.

Address 2081 Washburn Road, RR 2, Inverary, ON KOH 1X0
Contact Jim Jackson, President
Tel: (613) 546-7779 | Saw Shop: (613) 387-3851
Fax: (613) 546-2433 | info@rideauviewcontracts.com
Website www.rideauviewcontracts.com
Quarries Camden, Portland, Pittsburgh, Rear of Leeds and
Lansdowne Townships (near Kingston)

Rigbe Quarry

Address Head Office: 443 Railside Drive
Brampton, ON L7A 1E1
Phone (705) 333-3523
Email info@rigberock.com

Rockleith Quarry Ltd.

Address 2181 Brennan Line, Orillia, ON L3V 6H3
Contact Graham Harper
Tel: (705) 326-1407 | 1 (866) 288-2516
Fax: (705) 326-4634 | grh1@live.ca
Website www.rockleith.com
Quarries Severn Township (near Orillia)

Silicorp Developments Inc.

Address 144 Stephenson Road 8 East
Huntsville, ON POB 1MO
Contact Greg Marsh
Tel: (647) 220-6852 | gregmarsh@rogers.com
Quarry Wyse Township (North Bay area)

Speiran Quarries

Address 376 Millard Street, Orillia, ON L3V 4H4
Contact Diane Speiran, Owner and Manager
Tel: (705) 329-4899
diane.speiran@sympatico.ca
Quarries Rama Township (near Orillia)

Stonescape Quarry

Address 2189 County Road 36, P.O. Box 72
Buckhorn, ON K0L 1J0
Contact Rob Darling | rob@stonescapeinc.com
Tel: (705) 657-7111 | 1 (877) 657-7111
Fax: (866) 666-7325
Website www.stonescapeinc.com
Quarries Harvey Township (near Peterborough)

Taillefer Quarry

Address Sturgeon Falls, ON P2B 3K8
Contact Edgar Taillefer, Owner
Tel: (705) 753-9077
Website www.tailleferquarries.com/home.html
Quarries Aylmer Township (near Capreol)

Ted Boyes and Sons Construction Limited

Address P.O. Box 75, Burk's Falls, ON POA 1C0
Contact Tom Boyes, Manager | tomboyes10@gmail.com
Tel: (705) 382-3626 | (705) 382-2920
Fax: (705) 382-2199
Quarries Ryerson Township (near Parry Sound)

The Rock Centre

Address 140 Pinewood Park Drive, North Bay, ON P1B 8Z4
Contact Jamie Fuller | jamie@therockcentre.ca
Tel: (705) 495-1744 | (705) 358-3060
Cell: (705) 358-1100 | Fax: (705) 495-1745
Website www.therockcentre.ca
Quarries Five quarries, North Bay Area

Upper Canada Stone Company Ltd.

Address 3094 Line 4 North, RR 1, Oro Medonte, ON L0L 2L0
Contact Richard Scratch, Vice-President
Tel: (705) 835-7530 | 1 (800) 806-0000
Fax: (705) 835-7535
Charlie Giffin | charlie@uppercanadastone.com
sales@uppercanadastone.com
Website www.uppercanadastone.com
Quarries Gibbons Township (near Sudbury), Mayo, Cashel,
Madoc, Rear of Leeds and Lansdowne Townships
(near Kingston)

Muskoka Rock Company

Address 1165 Bethune Drive North, Gravenhurst, ON P1P 1R1
Contact Tel: (705)-788-7666 | (705) 787-6241 (quarry)
(705) 687-8700 (sales) | Fax: (705) 788-5121
sales@muskokarockcompany.com
Website muskokarockcompany.com
Quarries Franklin Township (near Huntsville)

Wiarton Stone Quarry Inc.

Address 3577 Bruce Road 13, RR 3, Wiarton, ON N0H 2T0
Contact Mike Ebel | mike@wiartonstonequarry.com
Tel: (519) 534-2226 | Fax: (519) 534-5120
Website www.wiartonstonequarry.com
Quarries Amabel Township (near Owen Sound)

Corporate Offices of Companies with Metal Mines in Ontario

Alamos Gold Inc.

181 Bay Street, Suite 3910, Toronto, ON M5J 2T3
Toll-Free: 1 (866) 788-8801 | Tel: (416) 368-9932
Fax: (416) 368-2934 | www.alamosgold.com
• *Island Gold Mine* • *Young-Davidson Mine*

Barrick Gold Corp.

Brookfield Place, TD Canada Trust Tower
161 Bay Street, Suite 3700, P.O. Box 212, Toronto, ON M5J 2S1
Toll-Free: 1 (800) 720-7415 | Tel: (416) 861-9911
Fax: (416) 861-2492 | www.barrick.com
• *Williams Mine*

Detour Gold Corp.

Commerce Court West
199 Bay Street, Suite 4100, P.O. Box 121, Toronto, ON M5L 1E2
Tel: (416) 304-0800 | Fax: (416) 304-0184
www.detourgold.com
• *Detour Lake Gold Mine*

Ferromin Inc.

158 Don Hillock Drive, Unit 13, Aurora, ON L4G 0H6
Toll-Free: 1 (800) 465-5066 | Tel: (416) 491-0230
Fax: (416) 494-1014 | www.ferromininc.com
• *Tomclid Iron Mine*

Glencore PLC

Glencore Canada Corp.

100 King Street West, Suite 6900, Toronto, ON M5X 1E3
Tel: (416) 775-1500 | Fax: (416) 775-1744 | www.glencore.ca
• *Kidd Creek Mine*

Glencore PLC

Sudbury Integrated Nickel Operations

6 Edison Road, Falconbridge, ON POM 1S0
Tel: (705) 693-2761 ext. 3120 | www.sudburyino.ca
• *Fraser Mine* • *Nickel Rim South Mine*

Harte Gold Corp.

161 Bay Street, Suite 2400, Toronto, ON M5J 2S1
Tel: (416) 368-0999 | www.hartegold.com
• *Sugar Zone Gold Mine*

Impala Platinum Holdings Ltd.

Impala Canada Ltd.

One University Avenue, Suite 1601, Toronto, ON M5J 2P1
Tel: (416) 360-7590 | Fax: (416) 360-7709 | www.nap.com
• *Lac des Iles Mine*

KGHM Polska Miedz S.A.

KGHM International Ltd.

191 Creditview Road, Vaughan, ON L4L 9T1
Tel: (647) 265-9191 | Fax: (604) 689-8556 | www.kghm.com
• *McCreedy West Mine*

Kirkland Lake Gold Ltd.

Royal Bank Plaza, South Tower
200 Bay Street, Suite 3120, Toronto, ON M5J 2J1
Tel: (416) 840-7884 | www.klgold.com
• *Holloway-Holt Mine* • *Macassa Mine* • *Taylor Mine*

McEwen Mining Inc.

150 King Street West, Suite 2800, Toronto, ON M5H 1J9
Toll-Free: 1 (866) 441-0690 | Tel: (647) 258-0395
Fax: (647) 258-0408 | www.mcewenmining.com
• *Black Fox Mine*

New Gold Inc.

Brookfield Place
181 Bay Street, Suite 3320, Toronto, ON M5J 2T3
Tel: (416) 324-6000 | Fax: (416) 324-9494
www.newgold.com
• *Rainy River Mine*

Newmont Corp.

666 Burrard Street, Suite 3400, Vancouver, BC V6C 2X8
Tel: (604) 696-3000 | www.newmont.com
• *Cochenour Mine* • *Musselwhite Mine* • *Porcupine Gold Mines*
(*Borden Mine*, *Hollinger Mine*, and *Hoyle Pond Mine*) • *Red Lake Mine*

Pan American Silver Corp.

Tahoe Canada
625 Howe Street, Suite 1440, Vancouver, BC V6C 2T6
Tel: (604) 684-1175 | Fax: (604) 684-0147
www.panamericansilver.com
• *Bell Creek Mine* • *Timmins West Mine*

Vale S.A.

Vale Canada Limited

Royal Bank Plaza, South Tower
200 Bay Street, Suite 1500, Toronto, ON M5J 2K2
Tel: (416) 361-7511 | www.vale.com/canada
• *Coleman Mine* • *Copper Cliff North Mine* • *Creighton Mine* • *Garson Mine* • *Totten Mine*

Wesdome Gold Mines Ltd.

220 Bay Street, Suite 1200, Toronto, ON M5J 2W4
Tel: (416) 360-3743 | www.wesdome.com
• *Eagle River Mine* • *Mishi Mine*

Companies Actively Exploring in Ontario

#
21C Metals Inc. (formerly Declan Cobalt Inc.) 1620 West 8th Avenue, Suite 302 Vancouver, BC V6J 1V4 (604) 639-4472 www.21cmetals.com
55 North Mining Inc. (formerly SGX Resources Inc.) 401 Bay Street, Suite 2702 Toronto, ON M5H 2Y4 (416) 567-9087 www.55northmining.com
A
Agnico Eagle Mines Ltd. 145 King Street East, Suite 400 Toronto, ON M5C 2Y7 (416) 947-1212 www.agnicoeagle.com
Alamos Gold Inc. 181 Bay Street, Suite 3910 Toronto, ON M5J 2T3 (416) 368-9932 www.alamosgold.com
Alto Ventures Ltd. 800 West Pender Street, Suite 615 Vancouver, BC V6C 2V6 (604) 689-2599 www.altoventures.com
Ambershaw Metallics Inc. First Canadian Place, 100 King Street West, Suite 5600 Toronto, ON M5X 1C9 (647) 846-0230 ambershaw.ca
Ardiden Ltd. 34 Colin Street, Level 1 West Perth, WA 6005 Australia 61-8-9322-7600 www.ardiden.com.au
Argo Gold Inc. 350 Bay Street, Suite 700 Toronto, ON M5H 2S6 (416) 786-7860 www.argogold.ca
Argonaut Gold Inc. 9600 Prototype Court Reno, NV 89521 USA (775) 284-4422 www.argonautgold.com
Atacama Resources International Inc. P.O. Box 811, 33 Father Costello Drive Schumacher, ON P0N 1G0 (519) 222-3890 www.acrlintl.com

AurCrest Gold Inc. 22 Adelaide Street West, Suite 3600 Toronto, ON M5H 4E3 (807) 737-5353 aurcrest.ca
Aurelius Minerals Inc. 110 Yonge Street Toronto, ON M5C 1T4 (416) 304-9095 aureliusminerals.com
Avalon Advanced Materials Inc. 130 Adelaide Street West, Suite 1901 Toronto, ON M5H 3P5 (416) 364-4938 avalonadvancedmaterials.com

B
Balmoral Resources Ltd. 700 West Pender Street, Suite 1750 Vancouver, BC V6C 1G8 (604) 638-3664 www.balmoralresources.com
Barrick Gold Corp. 161 Bay Street, Suite 3700 Toronto, ON M5J 2S1 (416) 861-9911 www.barrick.com
Battery Mineral Resources Ltd. 100 King Street West, Suite 5600 Toronto, ON M5X 1C9 (416) 306-5790 batterymineralresources.com
Benton Resources Inc. 684 Squier Street Thunder Bay, ON P7B 4A8 (807) 475-7474 www.bentonresources.ca
Bold Ventures Inc. 22 Adelaide Street West, Suite 3600 Toronto, ON M5H 4E3 (416) 864-1456 www.boldventuresinc.com
Brixton Metals Corp. 409 Granville Street, Suite 551 Vancouver, BC V6C 1T2 (604) 630-9707 brixtonmetals.com
BTU Metals Corp. 789 West Pender Street, Suite 1240 Vancouver, BC V6C 1H2 (604) 683-3995 www.btumetals.com

C
Cadillac Ventures Inc. 1099 Kingston Road, Suite 269 Pickering, ON L1V 1B5 (416) 203-7722 www.cadillacventures.com
Canada Cobalt Works Inc. 3028 Quadra Court Coquitlam, BC V3B 5X6 (604) 828-1475 www.canadacobaltworks.com
Canadian Gold Miner Corp. 410 Falconbridge Road, Unit 5 Sudbury, ON P3A 4S4 (705) 669-1777 www.canadiangoldminer.com
Canadian Orebodies Inc. 141 Adelaide Street West, Suite 301 Toronto, ON M5H 3L5 (416) 644-1747 www.canadianorebodies.com
Centerra Gold Inc. 1 University Avenue, Suite 1500 Toronto, ON M5J 2P1 (416) 204-1953 centerragold.com
Central Timmins Exploration Corp. 4950 Yonge Street, Suite 1008 North York, ON M2N 6K1 (416) 203-3776 www.centraltimmins.com
Champion Bear Resources Ltd. 2005-9th Street Southwest Calgary, AB T2T 3C4 (403) 229-9522 www.championbear.com
Commander Resources Ltd. 1111 Melville Street, 11th Floor Vancouver, BC V6E 3V6 (604) 685-5254 www.commanderresources.com
Comstock Metals Ltd. 850 West Hastings Street, Suite 310 Vancouver, BC V5K 0A1 (604) 639-4533 www.comstock-metals.com
Conquest Resources Ltd. 55 University Avenue, Suite 1805 Toronto, ON M5J 2H7 (647) 728 4126 www.conquestresources.com

Companies Actively Exploring in Ontario

Copper Lake Resources Ltd.

501 Alliance Avenue, Suite 401
Toronto, ON M6N 2J1
(416) 561-3626
copperlakeresources.com

Cruz Cobalt Corp.

701 West Georgia Street, Suite 1470
Vancouver, BC V7Y 1C6
(604) 899-9150
www.cruzcobaltcorp.com

Crystal Lake Mining Corp.

13236 Cliffstone Court
Lake Country, BC V4V 2R1
(604) 261-4466
crystallakeminingcorp.com

D

De Beers Canada Inc.

1601 Airport Road Northeast, Suite 300
Calgary, AB T2E 6Z8
(403) 930-0991
www.canada.debeersgroup.com

Delta Resources Ltd.

1718 Christine Crescent
Kingston, ON K7L 4V4
(613) 328-1581 | www.deltaresources.ca

Detour Gold Corp.

199 Bay Street, Suite 4100, P.O. Box 121
Toronto, ON M5L 1E2
(416) 304-0800 | www.detourgold.com

Dynasty Gold Corp.

610 Granville Street, Unit 1613
Vancouver, BC V6C 3T3
(604) 633-2100
www.dynastygoldcorp.com

E

Edison Cobalt Corp.

789 West Pender Street, Suite 1080
Vancouver, BC V6C 1H2
(416) 276-6689 | edisoncobalt.com

Empire Metals Corp.

889 West Pender Street, Suite 702
Vancouver, BC V6C 3B2
(604) 683-3288
www.empiremetalscorp.com

F

Falcon Gold Corp.

470 Granville Street, Suite 520
Vancouver, BC V6C 1V5
(604) 683-1991 | www.falcongld.ca

Fancamp Exploration Ltd.

7290 Gray Avenue
Burnaby, BC V5J 3Z2
(604) 434-8829
www.fancampexplorationltd.ca

First Cobalt Corp.

140 Yonge Street, Suite 201
Toronto, ON M5C 1X6
(416) 900-3891 | www.firstcobalt.com

First Energy Metals Ltd.

588 Broughton Street, Suite 1206
Vancouver, BC V6G 3E3
(604) 375-6005
www.firstenergymetals.com

First Mining Gold Corp.

1188 West Georgia Street, Suite 2070
Vancouver, BC V6E 4A2
(844) 306-8827 | firstmininggold.com

Frontier Lithium Inc.

2736 Belisle Drive
Val Caron, ON P3N 1B3
(705) 897-7622
www.frontierlithium.com

Frontline Gold Corp.

1 Toronto Street, Suite 201, P.O. Box 10
Toronto, ON M5C 2V6
(416) 362-9100
www.frontlinegold.com

G

G2 Goldfields Inc.

(formerly Sandy Lake Gold Inc.)

141 Adelaide Street West, Suite 1101
Toronto, ON M5H 3L5
(416) 628 5904 | www.g2goldfields.com

Galleon Gold Corp.

TD Canada Trust Tower,
161 Bay Street, Suite 2700
Toronto, ON M5J 2S1
(416) 644-0066
www.galleongold.com

Gatling Exploration Inc.

200 Burrard Street, Suite 1680
Vancouver, BC V6C 3L6
(604) 678-5308
www.gatlingexploration.com

Generation Mining Ltd.

P.O. Box 70,
100 King Street West, Suite 7010
Toronto, ON M5X 1B1
(416) 640-0280 | genmining.com

GFG Resources Inc.

640 Broadway Avenue, Suite 202
Saskatoon, SK S7N 1A9
(306) 931-0930
www.gfgresources.com

Glencore Canada Corp.

100 King Street West, Suite 6900
Toronto, ON M5X 1E3
(416) 775-1500 | www.glencore.ca

Global Energy Metals Corp.

128 West Pender Street, Suite 1501
Vancouver, BC V6B 1R8
(604) 688-4219
www.globalenergymetals.com

Globex Mining Enterprises Inc.

89 Belsize Drive
Toronto, ON M4S 1L3
(819) 797-5242
www.globexmining.com

Golden Goliath Resources Ltd.

688 West Hastings Street, Suite 910
Vancouver, BC V6B 1P1
(604) 682-2950
www.goldengoliath.com

Golden Share Mining Resources Corp.

145 Riviera Drive, Unit 7
Markham, ON L3R 5J6
(905) 968-1199 | www.goldenshare.ca

GoldON Resources Ltd.

108-800 Kelly Road, Suite 416
Victoria, BC V9B 6J9
(250) 474-7999
www.goldonresources.com

Gowest Gold Ltd.

80 Richmond Street West, Suite 1400
Toronto, ON M5H 2A4
(416) 363-1210 | www.gowestgold.com

Great Bear Resources Ltd.

1020-800 West Pender Street
Vancouver, BC V6C 2V6
(604) 646-8354
greatbearresources.ca

Greenstone Gold Mines GP Inc.

2381 Bristol Circle, Suite B203
Oakville, ON L6H 5S9
(905) 829-3134
www.greenstonegoldmines.com

Companies Actively Exploring in Ontario

Grid Metals Corp.

3335 Yonge Street, Suite 304
Toronto, ON M4N 2M1
(416) 955-4773
www.gridmetalscorp.com

Group Ten Metals Inc.

409 Granville Street, Suite 904
Vancouver, BC V6C 1T2
(604) 357-4790 | grouptenmetals.com

GTA Resources and Mining Inc.

855 Brant Street
Burlington, ON L7R 2J6
(905) 681-1925
www.gtaresources.com

H

Harte Gold Corp.

161 Bay Street, Suite 2400
Toronto, ON M5J 2S1
(416) 368-0999 | www.hartegold.com

Highgold Mining Inc.

800 West Pender Street, Suite 320
Vancouver, BC V6C 2V6
(604) 629-1165
www.highgoldmining.com

Honey Badger Exploration Inc.

145 Wellington Street West, Suite 1001
Toronto, ON M5J 1H8
(416) 364-7029 | honeybadgerexp.com

I

IAMGOLD Corp.

401 Bay Street, Suite 3200
Toronto, ON M5H 2Y4
(416) 360-4710 | www.iamgold.com

IM Exploration Inc.

181 Bay Street, Suite 4400
Toronto, ON M5J 2T3
(647) 880-6414

iMetal Resources Inc.

580 Hornby Street, Suite 510
Vancouver, BC V6C 3B6
(604) 739-9713 | imetalresources.ca

Impala Canada Ltd.

1 University Avenue, Suite 1601
Toronto, ON M5J 2P1
(416) 360-7590 | impalacanada.com

Infinite Lithium Corp.

789 W Pender Street, Suite 1240
Vancouver, BC V6C 1H2
(604) 683-3995
www.infinitelithium.com

International Lithium Corp.

1030 West Georgia Street, Suite 1910
Vancouver, BC V6E 2Y3
(604) 449-6520
internationallithium.com

International Montoro Resources Inc.

625 Howe Street, Suite 600
Vancouver, BC V6C 2T6
(604) 683-6648
www.montororesources.com

International Prospect Ventures Ltd.

2864 chemin Sullivan
Val d'Or, QC J9P 0B9
(819) 824-2808
www.iprospectventures.ca

Inventus Mining Corp.

82 Richmond Street East, Suite 1
Toronto, ON M5C 1P1
(647) 258-0395 ext. 280
www.inventusmining.com

K

Kesselrun Resources Ltd.

278 Bay Street, Suite 102
Thunder Bay, ON P7B 5N2
(866) 416-7941
www.kesselrunresources.com

KGHM International Ltd.

191 Creditview Road, Suite 400
Vaughan, ON L4L 9T1
(647) 265-9191 | kghm.com

Kirkland Lake Gold Ltd.

200 Bay Street, Suite 3120
Toronto, ON M5J 2J1
(416) 840-7884 | www.klgold.com

KWG Resources Inc.

141 Adelaide Street West, Suite 420
Toronto, ON M5H 3L5
(416) 646-1374 | kwgresources.com

L

Landore Resources Ltd.

555 Central Avenue, Suite 1
Thunder Bay, ON P7B 5R5
(807) 623-3770 | www.landore.com

Laurion Mineral Exploration Inc.

40 King Street West, Suite 5800
Toronto, ON M5H 3S1
(705) 788-9186 | www.laurion.ca

LiCo Energy Metals Inc.

789 West Pender Street, Suite 1220
Vancouver, BC V6C 1H2
(236) 521-0207 | licoenergymetals.com

M

MacDonald Mines Exploration Ltd.

145 Wellington Street West, Suite 1001
Toronto, ON, M5J 1H8
(416) 364-4986
www.macdonaldmines.com

Magna Mining Corp.

P.O. Box 130, 45 Oak Street
Dowling, ON P0M 1R0
(705) 665-0262 | magnamining.com

Manitou Gold Inc.

82 Richmond St East
Toronto, ON M5C 1P1
(705) 698-1962 | manitougold.com

Marquee Resources Ltd.

22 Townshend Road
Subiaco WA 6005 Australia
61 08 6380-2471
www.marqueeresources.com.au/

Maxtech Ventures Inc.

595 Howe Street, Suite 702
Vancouver, BC V6C 2T5
(604) 484-8989
www.maxtech-ventures.com

McEwen Mining Inc.

150 King Street West, Suite 2800
Toronto, ON M5H 1J9
(647) 258-0395
www.mcewenmining.com

McLaren Resources Inc.

44 Victoria Street, Suite 1616
Toronto, ON M5C 1Y2
(905) 903-6423
www.mclarenresources.com

Melkior Resources Inc.

66 Brousseau Avenue, Suite 207
Timmins, ON P4N 5Y2
(705) 267-4000 | www.melkior.com

Companies Actively Exploring in Ontario

MetalCORP Ltd.

490 Maureen Street
Thunder Bay, ON P7B 6T2
(807) 683-8161 | www.metalcorp.ca

Metalex Ventures Ltd.

1634 Harvey Avenue, Suite 203
Kelowna, BC V1Y 6G2
(250) 860-8599 | metalexventures.com

Metals Creek Resources Corp.

945 Cobalt Crescent
Thunder Bay, ON P7B 5Z4
(807) 345-4990
www.metalscreek.com

Meteoric Resources NL

P.O. Box Z5187, 33 Ord Street, Level 1
West Perth, WA 6005 Australia
61 08 9226-2011
www.meteoric.com.au

Mistango River Resources Inc.

55 University Avenue, Suite 1805
Toronto, ON M5J 2H7
(416) 644-1567 | www.mistango.com

Moneta Porcupine Mines Inc.

65 Third Avenue
Timmins, ON P4N 1C2
(416) 579-3040
www.monetaporcupine.com

N

New Age Metals Inc.

2148 West 38th Avenue, Suite 101
Vancouver, BC V6M 1R9
(604) 685-1870 | newagemetals.com

New Dimension Resources Ltd.

625 Howe Street, Suite 1020
Vancouver, BC V6C 2T6
(604) 314-2662
www.newdimensionresources.com

New Gold Inc.

181 Bay Street, Suite 3320
Toronto, ON M5J 2T3
(416) 324-6000 | www.newgold.com

Newmont Corp.

666 Burrard Street, Suite 3400
Vancouver, BC V6C 2X8
(604) 696-3000 | www.newmont.com

Niobay Metals Inc.

1111 St. Charles West, Suite 101
Longueuil, QC J4K 5G4
(514) 866-6500 | niobaymetals.com

Noble Mineral Explorations Inc.

120 Adelaide Street West, Suite 2500
Toronto, ON M5H 1T1
(416) 214-2250
www.noblemineralexploration.com

Noront Resources Ltd.

212 King Street West, Suite 501
Toronto, ON M5H 1K5
(416) 367-1444 | norontresources.com

North American Nickel Inc.

1055 West Hastings Street, Suite 2200
Vancouver, BC V6E 2E9
(604) 770-4334
www.northamericannickel.com

Northern Fox Resources Inc.

2857 Sherwood Heights Drive, Suite 1
Oakville, ON L6J 7J9
(416) 878-1460
www.northernfoxresources.com

Northern Graphite Corp.

290 Picton Avenue, Suite 201
Ottawa, ON K1Z 8P8
(613) 241-9959 | northerngraphite.com

Northern Sphere Mining Corp.

121 King Street West, Suite 2150
Toronto, ON M5H 3T9
(647) 299-1153

Northern Superior Resources Inc.

1351C Kelly Lake Road, Unit 7
Sudbury, ON P3E 5P5
(705) 525-0992 | www.nsuperior.com

Northstar Gold Corp.

17 Wellington Street North
New Liskard, ON P0J 1P0
(604) 617-8191
www.northstargoldmining.com

Nuinsco Resources Ltd.

80 Richmond Street West, 18th Floor
Toronto, ON M5H 2A4
(416) 626-0470 | www.nuinsco.ca

O

O3 Mining Inc.

(Subsidiary of Osisko Mining Inc.)
155 University Avenue, Suite 1440
Toronto, ON M5H 3B7
(416) 363-8653 | o3mining.ca

Odin Metals Ltd.

35 Richmond Street
West Perth, WA 6005 Australia
61-8-6117-0447 | odinmetals.com.au

Orefinders Resources Inc.

55 University Avenue, Suite 1805
Toronto, ON M5J 2H7
(416) 644-1567 | www.orefinders.ca

P

Pacton Gold Inc.

200 Burrard Street, Suite 1680
Vancouver, BC V6C 3L6
(855) 584-0258 | www.pactongold.com

Palladium One Mining Inc.

800 West Pender Street, Suite 550
Vancouver, BC V6C 2V6
(778) 327-5799
www.palladiummoneinc.com

Pan American Silver Corp.

625 Howe Street, Suite 1440
Vancouver, BC V6C 2T6
(604) 684-1175
www.panamericansilver.com

Pancontinental Resources Corp.

217 Queen Street West, Suite 401
Toronto, ON M5V 0R2
(416) 293-8437
www.panconresources.com

Panoramic Resources Ltd.

Level 9, 553 Hay Street, P.O. Box Z5487
Perth, WA 6000 Australia
61-8-6266-8600
panoramicresources.com

Pelangio Exploration Inc.

82 Richmond Street East, Suite 208
Toronto, ON M5C 1P1
(905) 336-3828 | www.pelangio.com

Pistol Bay Mining Inc.

838 West Hastings Street, Suite 700
Vancouver, BC V6C 0A6
(604) 369-8973
www.pistolbaymininginc.com

Plato Gold Corp.

1240 Bay Street, Suite 800
Toronto, ON M5R 2A7
(416) 968-0608 | www.platogold.com

Companies Actively Exploring in Ontario

Power Metals Corp.

1055 West Hastings Street, Suite 300
Vancouver, BC V6E 2E9
(646) 661-0409
www.powermetalscorp.com

Premier Gold Mines Ltd.

1100 Russell Street, Suite 200
Thunder Bay, ON P7B 5N2
(807) 346-1390
www.premiergoldmines.com

Prize Mining Corp.

250-1199 West Hastings Street
Vancouver, BC V6E 3T5
(604) 336-1327 | prizemining.com

Prosper Gold Corp.

1177 West Hastings Street, Suite 2300
Vancouver, BC V6E 2K3
(604) 638-3663
www.prospergoldcorp.com

Pure Gold Mining Inc.

1055 West Hastings Street, Suite 1900
Vancouver, BC V6E 2E9
(604) 646-8000 | puregoldmining.ca

R

Red Lake Gold Inc.

(formerly Pivit Exploration Inc.)

815 Hornby Street, Suite 605
Vancouver, BC
(604) 681-8835 | www.redlakegold.ca

Red Pine Exploration Inc.

145 Wellington Street West, Suite 1001
Toronto, ON M5J 1H8
(416) 364-7024 | www.redpineexp.com

Riverside Resources Inc.

800 West Pender Street, Suite 550
Vancouver, BC V6C 2V6
(778) 327-6671 | www.rivres.com

RJK Explorations Ltd.

P.O. Box 1053
Kirkland Lake, ON P2N 3L1
(705) 568-7956
www.rjkexplorations.com

Rock Tech Lithium Inc.

777 Hornby Street, Suite 600
Vancouver, BC V6Z 1S4
(778) 358-5200 | rocktechlithium.com

Rockridge Resources Ltd.

777 Dunsmuir Street, Suite 1610
Vancouver, BC V7Y 1K4
(604) 639-3856
www.rockridgeresourcesltd.com

Rogue Resources Inc.

44 Victoria Street, Suite 1612
Toronto, ON M5C 1Y2
(647) 243-6581
www.rogueresources.ca

Romios Gold Resources Inc.

2 Toronto Street, Suite 500
Toronto, ON M5C 2B6
(416) 221-4124 | www.romios.com

Rubicon Minerals Corp.

121 King Street West, Suite 830
Toronto, ON M5H 3T9
(416) 766-2804
www.rubiconminerals.com

Rumble Resources Ltd.

36 Ord Street, Suite 9
West Perth, WA 6005 Australia
61-8-6555-3980
www.rumblresources.com.au

S

Sanatana Resources Inc.

925 West Georgia Street, Suite 1910
Vancouver, BC V6C 3L2
(604) 408-6680
www.sanatanaresources.com

Sibanye-Stillwater Ltd.

Libanon Business Park, 1 Hospital Street
Libanon, Westnoria 1780
27-11-278-9600
www.sibanyestillwater.com

Signature Resources Ltd.

366 Bay Street, Suite 200
Toronto, ON M5H 4B2
(705) 445-0184
www.signatureresources.ca

Silver Spruce Resources Inc.

802-1550 Bedford Highway
Bedford, NS B3K 5M2
(866) 641-3397
www.silverspruceresources.com

Spruce Ridge Resources Ltd.

7735 Leslie Road West
Puslinch, ON N0B 2J0
(519) 822-5904
spruceridgeresources.com

Sudbury Platinum Corp.

410 Falconbridge Road, Unit 5
Sudbury, ON P3A 4S4
(705) 669-1777
www.sudburyplatinumcorp.com

Sumitomo Metal Mining Co. Ltd.

Shimbashi Sumitomo Building 11-3,
Shimbashi 5-chome
Minato-ku Tokyo 105-8716 Japan
81-3-3436-7705 | www.smm.co.jp/E

Superior Lake Resources Ltd.

1202 Hay Street, Emerald House
West Perth, WA 6005 Australia
61-8-6117-0479 | superiorlake.com.au

Surge Exploration Inc.

789 Pender Street, Suite 1220
Vancouver, BC V6C 1H2
(778) 945-2656 | surgeexploration.com

T

Transition Metals Corp.

410 Falconbridge Road, Unit 5
Sudbury, ON P3A 4S4
(705) 669 1777
www.transitionmetalscorp.com

Treasury Metals Inc.

130 King Street West, Suite 3680
Toronto, ON M5X 1B1
(416) 214-4654
www.treasurymetals.com

Tri Origin Exploration Ltd.

125 Don Hillock Drive, Unit 18
Aurora, ON L4G 0H8
(905) 727-1779 | www.triorigin.com

U

Ultra Resources Inc. (formerly Ultra Lithium Inc.)

1177 West Hastings Street, Suite 2300
Vancouver, BC V6E 2K3
(778) 968-1176 | ultraresourcesinc.com

V

Vale Canada Ltd.

200 Bay Street, Suite 1500
Toronto, ON M5J 2K2
(416) 361-7511 | www.vale.com/canada

VR Resources Ltd.

700 West Pender Street, Suite 1750
Vancouver, BC V6C 1G8
(604) 262-1104 | www.vrr.ca

Companies Actively Exploring in Ontario

W

Wallbridge Mining Company Ltd.

129 Fielding Road
Lively, ON P3Y 1L7
(705) 682-9297
www.wallbridgemin.com

Warrior Gold Inc.

25 Adelaide Street East, Suite 1400
Toronto, ON, M5C 3A1
(647) 344-3433 | warriorgoldinc.com

Wesdome Gold Mines Ltd.

220 Bay Street, Suite 1200
Toronto, ON M5J 2W4
(416) 360-3743 | www.wesdome.com

West Red Lake Gold Mines Inc.

82 Richmond Street East, Suite 200
Toronto, ON M5C 1P1
(416) 203-9181
www.westredlakegold.com

Z

ZEN Graphene Solutions Ltd.

1205 Amber Drive, Suite 210
Thunder Bay, ON P7B 6M5
(844) 730-9822
www.zengraphene.com



Exploring under conductive clay cover:

Galvanic HeliSAM case studies from Australia and Canada using the magnetometric conductivity technique

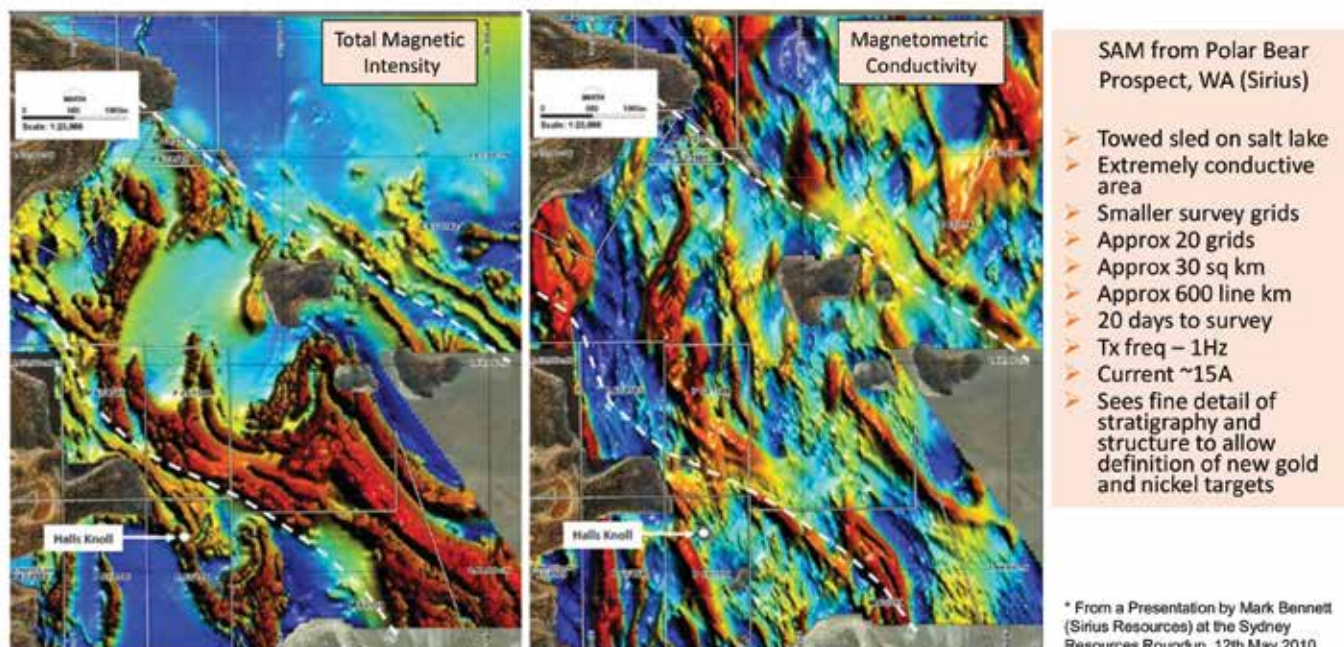
By Ryan Olson¹, Brent Robertson², derived from works by Malcolm Cattach³

¹ Gap-Discovery HeliSAM, ² Discovery Int'l Geophysics, ³ Gap Geophysics Australia

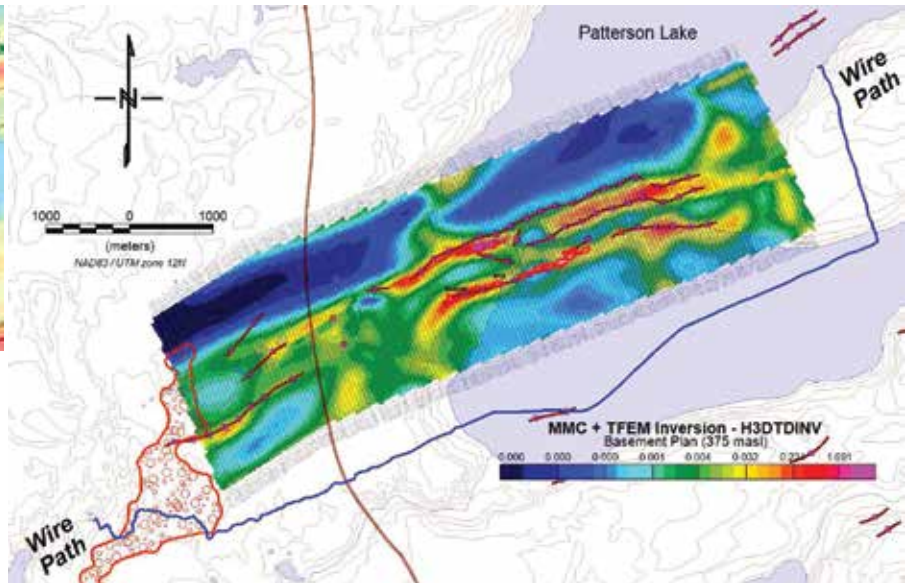
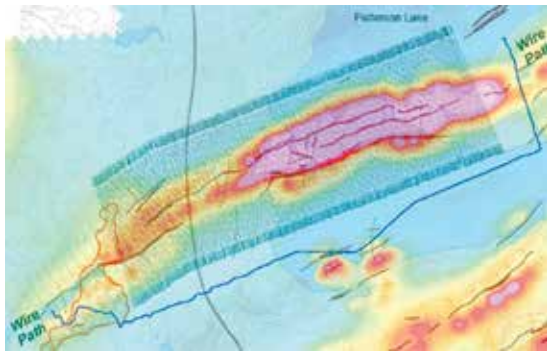
Exploration in the Abitibi clay belt, or other regions where conductive regolith is dominant (e.g. saline alluvial cover, sediment cover in desert valleys under range front pediments, etc.) can greatly limit the effectiveness of traditional electromagnetic (EM) or electrical (IP/Res) geophysical exploration. It is essential when planning an explorative geophysical survey to take into account the potential masking effects that conductive cover can create. Galvanic SAM minimizes inductive response from conductive cover by utilizing long galvanic dipoles to drive current deep into the underlying bedrock geology, thereby creating linear electrical current flow along structures below the conductive cover.

The Galvanic SAM method measures the magnetic field induced by a time-varying electrical current applied to the Earth. The applied current is created with a high-power transmitter system producing a low-frequency square-wave signal that is introduced into the ground through distant electrodes placed along strike of the structure or lithology under investigation. The transmitter current is preferentially channelled along geological features that are relatively less resistive than their surroundings. The electromagnetic signal from current distribution within the ground is measured simultaneously with the Earth's spatially varying magnetic field using a Cs Vapour total-field magnetometer that samples at a very high sample rate

SAM MMC Case Study – Polar Bear, WA



Case study from Western Australia. Magnetometric conductivity over salt lake. Showing conductors masked from traditional inductive EM. COURTESY OF GAP GEOPHYSICS.



Case study from Northern Saskatchewan. Left: Channel 36 dB/dt VTEM response. Right: Magnetometric conductivity and total field electromagnetics from a Galvanic HelisAM survey were jointly inverted to provide a high-resolution conductivity model at the basement contact. Overlain with interpreted conductors from airborne and ground EM surveys.

COURTESY OF BINGHAM GEOPHYSICS.

to effectively measure the full spectrum of the artificial waveform. The signals from Earth's static magnetic field, combined with the electromagnetic field due to the applied current (including that from the transmitting wire) are spectrally distinct. They may be separated with the aid of digital signal processing techniques and processed to remove these effects and to sample parts of the waveform to produce total-field magnetometric conductivity (TFMMC), total-field electromagnetics (TFEM) and total magnetic intensity (TMI).

Galvanic SAM can be employed in either airborne mode, which is suited to rugged or heavily forested terrain, or ground walking mode, which is suited to open, easily traversed terrain. Either mode can rapidly map electrical current flow in the range of 20 to 200 line/kilometres per day acquiring high-resolution data to a depth of 200 to 300 meters below conductive regolith. Measured conductivity contrast can be associated with conductive minerals, differential weathering within shear zones, different lithologies, lithological contacts, alteration zones, and related structures. In general, TFMMC highs can be interpreted as sites of increased current flow in zones of higher conductivity, whereas TFMMC lows highlight more resistive areas. Offsets observed in TFMMC trends can be interpreted to result from cross-cutting faults and structures. Swelling along linear features can be interpreted to be areas of alteration (possible sweet spots) along strike. High-resolution total magnetic intensity (TMI) is also a standard deliverable product.

Frequently structures controlling mineralization require close-spaced drilling along and across strike to properly evaluate for potential economic mineralization. The SAM technique can be used to more accurately define nar-

row zones of conductivity contrast and areas more likely to control mineralization and identify the extent of known mineralization.

Key advantages:

- Rapid acquisition 100 to 200 line/kilometres per day airborne, 10 to 30 line/kilometres per day walking mode;



CHIBOUGAMAU DIAMOND DRILLING LTD.
FORAGES CHIBOUGAMAU LTÉE

More than 50 years of operation
in the drilling industry

- **Customized Rigs**
- **Specialized in deep drilling & helicopter jobs**

Branches
White River | Thunder Bay | Red Lake
Chibougamau | Rouyn-Noranda



Air Support Logistics

527 route 167, C.P.4, Chibougamau, QC, G8P 2K5

Tel: 418-748-3977 www.chibougamaudrilling.ca

Chibougamau.drilling@sympatico.ca

HELISAM CAN SIGNIFICANTLY ADVANCE A PROJECTS POTENTIAL BY PRECISELY REFINING PROSPECTIVE CONDUCTIVITY TARGETS TO A DEPTH OF 200 TO 300 METERS IN A MATTER OF DAYS.

- Very high-resolution, identification of subtle anomalous features;
- Multi-parameter data sets, TFM-MC/TFEM/TMI offers multiple complementary views of the geology below conductive cover;
- Relatively inexpensive – high value for money spent.

A case study (see figure 1) compiled by Gap Geophysics from the Yilgarn Craton in Western Australia highlights an exploration program over a

salt lake. Due to the uniformity of the terrain, the SAM sensor was mounted to a sled and towed by ATV for a total of approximately 600 line-kilometers, across approximately 20 dipoles. The magnetometric conductivity was able to highlight structures below the salt flat to help define potential gold and nickel targets.

A Galvanic HeliSAM test survey was flown over the Patterson Lake Corridor in Northern Saskatchewan through a joint venture between Discovery International Geophysics and Gap Geophysics in an effort to open up accessibility to the HeliSAM system for the Canadian industry. Although not explicitly plagued by conductive cover other than the typical conductive lake bottom, the survey serves as a proof of concept of the galvanic HeliSAM method, and the improvement in resolution compared to a standard helicopter TEM survey because of the EM smearing effects of the conductive lake-bottom sediments. The magnetometric conductivity and total field EM data sets were jointly inverted to create a high-resolution conductivity model of the basement unconformity as illustrated in Figure 2.

For projects in the Abitibi clay belt, or other regions where geophysical exploration is hindered by conductive cover, a Galvanic HeliSAM survey should be considered to provide low-cost, high-resolution, multi-parameter data sets. HeliSAM can significantly advance a projects potential by precisely refining prospective conductivity targets to a depth of 200 to 300 meters in a matter of days, as opposed to weeks or months common to ground electrical/electromagnetic surveys. ●



**TSL
LABORATORIES**

#2-302/48th Street Saskatoon SK S7K 6A4
Ph: (306) 931-1033 Fx: (306) 242-4717
e-mail: info@tsllabs.com

Precious Metals by Fire Assay
Geochemical Analysis
Multielement by ICP
Whole Rock

***Providing Quality Analyses,
Excellent Turnaround Time and
Customer Service for the Exploration
and Mining Industry.***



MORGAN FUELS



Serving Northwestern Ontario Since 1935

PROPANE • FUELS • LUBRICANTS




PROPANE
Residential, Commercial, Industrial and Construction

FUELS
Gasoline, Clear and Dyed Diesel & Aviation

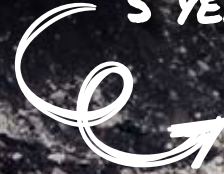
Bulk Fuel Delivery • Oils Lubes • Propane • Drummed Jet and Aviation fuels

Dryden 937-2149	Kenora 468-6050	Pickle Lake 928-2261	Red Lake 735-9920	Sioux Lookout 737-2250	Winnipeg 204-832-2446
--------------------	--------------------	-------------------------	----------------------	---------------------------	--------------------------

www.morganfuels.ca info@morganfuels.ca 1-(800)-661-3635

YOUR BUSINESS NEEDS MORE THAN A BUILDING

PLAN TO RELOCATE
TRUCK SHOP IN
5 YEARS



5 YEAR FACILITY PLAN

- YR 1 - TRUCK SHOP + PARTS WAREHOUSE
- YR 2 - PRIMARY CRUSHER +
STOCKPILE FACILITIES
- YR 5 - EXPAND WAREHOUSE

SITE TO BE
DECOMMISSIONED
IN 15 YEARS

- TEMPORARY DESIGN
WITH FUTURE
RELOCATION IN MIND

REMOTE SITE

- QUICK ACCESS TO PARTS
+ MAINT. REQUIRED



FIND OUT HOW A **ShelterSolution**
IS MORE THAN A BUILDING

NORSEMANSTRUCTURES.COM



**NORSEMAN
STRUCTURES**

Fiercely Reliable™

With a **ShelterSolution**, what you don't see matters most. It's a process, not just a building. One that reveals your project needs, underlying business drivers, and the preferences of your team. It's an intelligently designed solution, built with you, that enhances your operations.



HEAVY DUTY TRUCK SHOP



AMMONIUM NITRATE STORAGE

INDEX TO ADVERTISERS

Activation Laboratories.....	35	Korex	10
ALS Global.....	5	Lamontagne Geophysics Ltd.	29
Association for Mineral Exploration	11	Major Drilling	21
Canadian Exploration Services Limited	10	Montoro Resources	7
Chibougamau Diamond Drilling Ltd.	51	Morgan Fuels.....	52
Corriveau J.L. & Ass. Inc.....	18	Mud Bay Drilling / ConeTec	3
Custom Helicopters	35	Norseman Structures	9
Discovery International Geophysics.....	IFC	Odyssey Fluid Power.....	8
dp Diamond Blades	21	PDAC.....	17
Elemental Controls	8	Signal Weather Services	20
Expert Geophysics	7	Sling Choker.....	20
Forest Helicopters	3	Superior Exploration.....	10
G4 Drilling	19	Tashota Resources.....	15
GDD	18	Tech Directional Services	5
GEM Systems Inc.....	55	The Gear Centre.....	16
Geosig Inc.....	35	TPS Group	7
Greg Macdonald Equipment.....	20	TSL Laboratories	52
IBK Capital Corp.....	27		



SUITE 300, 6 ROSLYN ROAD, WINNIPEG, MANITOBA, CANADA

www.delcommunications.com

DEL Communications Inc.

The key to success.

*We offer outstanding personal service
and quality in the areas of...*

- Creative Design
- Advertising sales
- Trade Publications
- Video Production & Editing
- Qualified Sales & Editorial Team



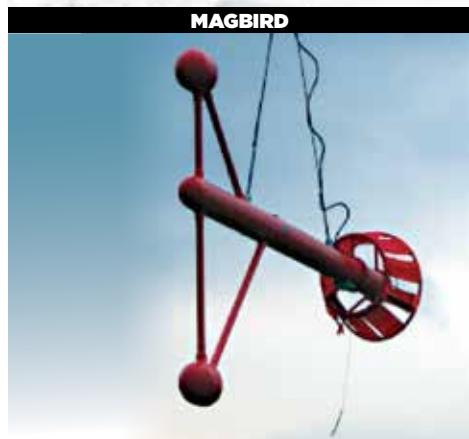
Systems & Solutions for Magnetic Surveying

Since 1980 Leading the World of Magnetics

Airborne



MAGBIRD



GRADBIRD



TRIAXBIRD

UAV



DRONEMAG™



AIRBIRD



AIRGRAD



CARDINAL



AirVLF

Ground



**POTASSIUM
TECHNOLOGY**



**PROTON
TECHNOLOGY**



OVERHAUSER TECHNOLOGY

Highest Precision & Absolute Accuracy

Magnetometers, Gradiometers, Magnetic Systems and EM Sensors for
Mineral and Oil Exploration, UXO, Archeology and Earth Observation

Visit

WWW.GEMSYSTEMS.ca for details and pricing
Phone: 905 752 2202 Email: info@gemsys.ca

ONTARIO PROSPECTORS EXPLORATION SHOWCASE

"Exploration finds Mines"

April 7 and 8 - Valhalla Inn, Thunder Bay, ON

**Tuesday, April 7
9 a.m to 6 p.m.**

Northwestern Ontario
Prospectors Association (NWOPA)
Awards Dinner (ticketed event)
will be held Tuesday,
April 7 at 6 p.m. Be sure to get
your ticket – this event sells out!

**Wednesday, April 8
9 a.m. to 4 p.m.**

The exhibit floor will be
open to public review from
1 p.m. to closing.

**The Explorers Cup
Charity Hockey Game
Thursday, April 9
Fort William Gardens**

It is free to come and cheer for
your favourite player! Donations
for the Salvation Army will be
accepted and appreciated.

Come enjoy and learn from the many diversified
exploration-related presentations and exhibits.

There will be over 80 exhibits and core
displays. Speakers this year include Great Bear
Resources, Warrior Gold, Musselwhite Mine,
Noront, Manitou Gold, Wesdome Gold Mines,
Alamos and Metals Creek.



Delegate registration are accepted on-site.

For more information, visit our
website at the link below and/or contact
Garry Clark at (807) 622-3284 or (807) 472-9989.