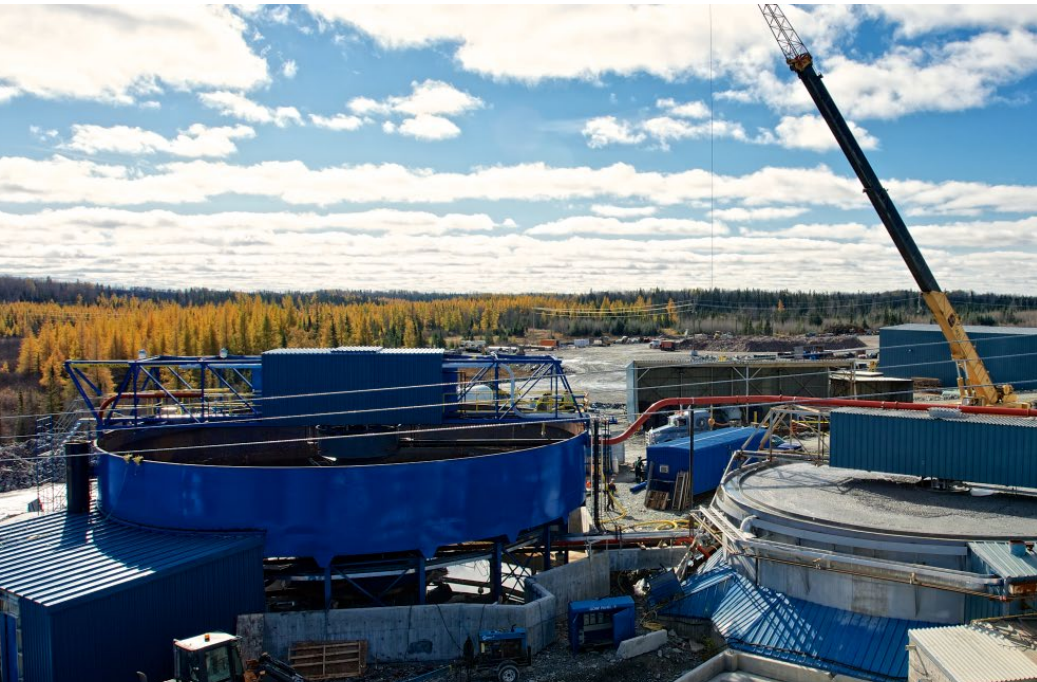
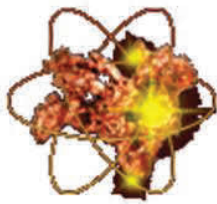


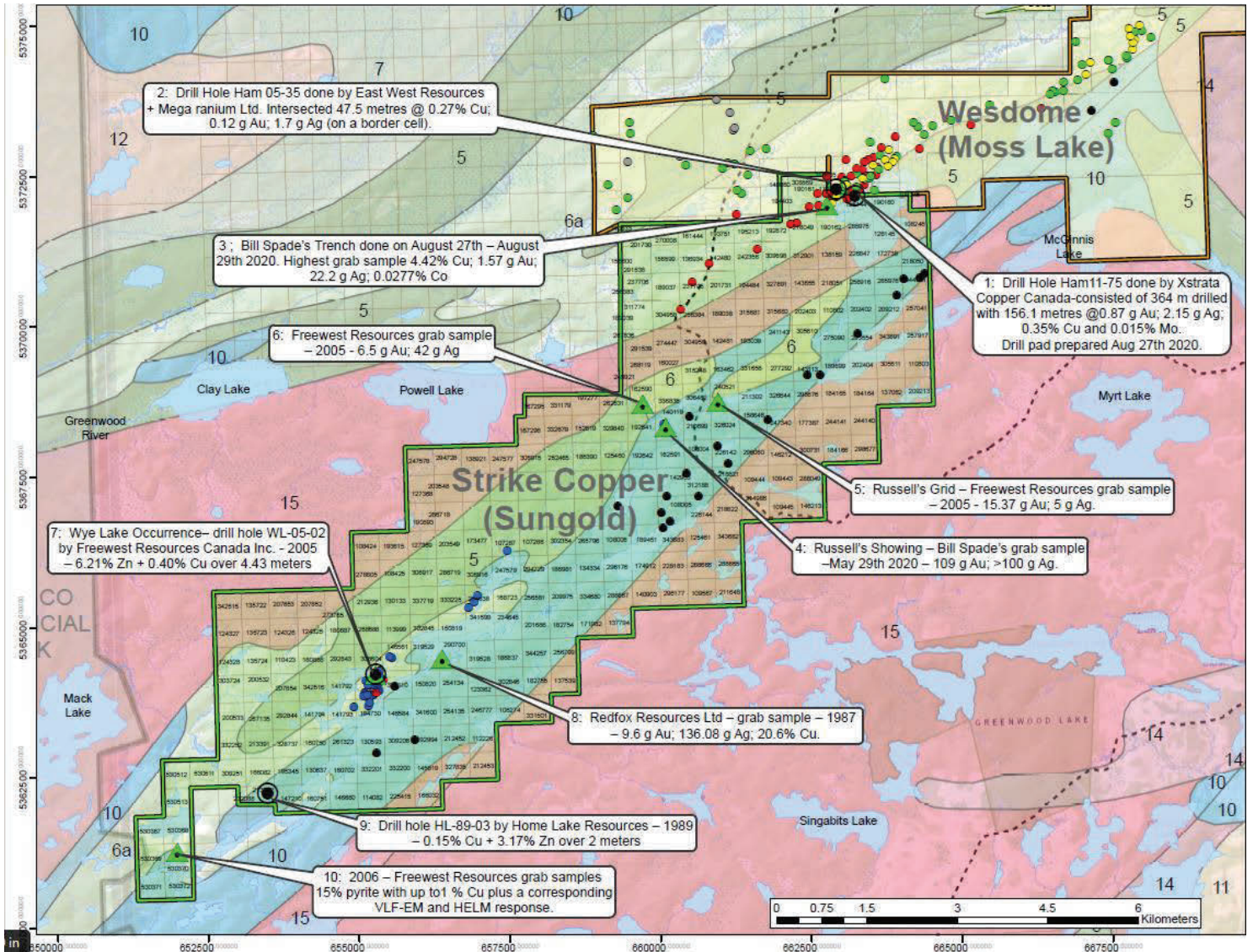
ONTARIO MINING & EXPLORATION

DIRECTORY AND RESOURCE GUIDE 2021





STRIKE COPPER CORP. POWER THROUGH COPPER



Strike Copper Corp. ("SCC") is a junior resource exploration company, currently focused on defining and monetizing the historical **Copper, Gold, Silver, Zinc, and Nickel** mineral exploration potential on its **Sungold property** in the **Shebandowan Gold Camp** in Northern Ontario.

Company Highlights

- Proven management and advisory team with significant exploration, engineering, project financing and permitting experience.
- Strong and growing (long term) demand for copper (Sungold's primary resource) due to its use in electric vehicles and other green energy solutions.

- Current demand trends indicate there will be a 10 million tonne copper supply deficit by 2028.
- Recent and historical exploration results suggest Sungold has the potential for significant quantities of copper, gold, zinc and other mineral resources.
- Sungold is adjacent to an NI 43-101 proven 3.2 million Au resource (recently acquired by Goldshore Resources Inc. in a \$57m transaction).

Strike Copper Corp.
www.strikecoppercorp.com

82 Richmond St. East, Suite 401
Toronto, ON M5C 1P1

C: 416-315-6490

O: 647-350-6122

E: elbourne007@gmail.com

This is not a general solicitation; any investment is only open to accredited or other eligible investors.



SITE INVESTIGATION SERVICES

- FULL-SERVICE GEOTECHNICAL DRILLING
- MONITORING INSTALLATIONS
- IN-SITU TESTING
- ALL ACCESS: REMOTE, HELI, AMPHIBIOUS



WE LEAD SAFETY / WE ARE QUALITY / WE ARE PROFESSIONAL / WE ADD VALUE

MUDBAYDRILLING.COM

A MEMBER OF THE CONETEC GROUP OF COMPANIES.



INQUIRIES: CANADA@G4DRILLING.COM | MEXICO@G4DRILLING.COM

TEL: 819 825 4079

ONTARIO MINING & EXPLORATION

DIRECTORY AND RESOURCE GUIDE 2021

Contents

Message from Ontario Prospectors Association, Garry Clark	6
Message from the Minister of Energy, Northern Development and Mines, Greg Rickford	6
Ontario Mining Operations 2021	7
Gold Mines	8
Other Metal Mines	18
Major Industrial Mineral Producers	22
Gemstone and Mineral Specimen Mines	26
Lime and Specialty Limestone Producers	28
Trap Rock Producers	29
Brick Producers	30
Cement Producers' Quarries	30
Dimension Stone and Specialty Aggregate Producers	31
Corporate Offices of Companies with Metal Mines in Ontario.....	36
Advanced Mineral Projects in Ontario 2021.....	37
Companies Actively Exploring in Ontario.....	38
DigiGeoData Publishes the Shining Tree/Gowganda Exploration Activity Map	44
Index to Advertisers	46
Marketplace	46



Ontario Mining & Exploration
Directory and Resource Guide
2021 is published for The Ontario
Prospectors Association (OPA).

941 Cobalt Crescent
Thunder Bay, ON P7B 5Z4
Phone: (807) 622-3284
Toll Free: (866) 259-3727
Fax: (807) 622-4156
www.ontarioprospectors.com

Published by:

MediaEdge Publishing

MediaEdge

mediaedgepublishing.com
33 South Station Street
Toronto, ON M9N 2B2
(866) 480-4717

531 Marion Street
Winnipeg, MB R2J 0J9
(866) 201-3096
Fax: (204) 480-4420

Publisher: Robert Thompson

Editor: Elyce Mankewich

Sales Executives: Pat Johnston,
Kristine Dudar, Nolan Ackman

Design Specialist:
Marisa Giesbrecht

President: Kevin Brown


Senior Vice President:
Robert Thompson

Directory, Business Management:
Michael Bell

Branch Manager: Nancie Privé

Publication Mail Agreement
#40787580

All rights reserved. The contents
of this publication may not be
reproduced by any means, in
whole or in part, without the prior
written consent of the association.

 Ontario Mining &
Exploration Directory &
Resource Guide 2021 is printed
on 10% post-consumer FSC
certified paper using soya based
inks. When necessary to mail an
issue in an enclosure, we use an
environmentally-friendly, 100%
oxo-degradable poly-wrap.



OPERATING ENGINEERS
TRAINING INSTITUTE OF ONTARIO

TRAINING TOMORROW'S WORKFORCE

Tower and Mobile Crane • Excavator • Dozer
Tractor-Loader-Backhoe • Concrete Pump • Grader
Pipeline • Drill Rig • Commercial Truck Driver

INTERNATIONAL UNION OF OPERATING ENGINEERS LOCAL 793

BUSINESS MANAGER Mike Gallagher PRESIDENT Joe Redshaw

2245 Speers Road • Oakville • ON • Canada • L6L 6X8 • 1-877-793-4863 • www.oetio.com • www.iuocal793.org



In 2020, we are proud to have enabled Canadian jobs and supported worthy charities during a very uncertain time.

50 Flow-Through Financings in 2020 | Thank you to our partnering issuers:

- Amex Exploration
- Anaconda Mining
- Argonaut Gold
- Auramex Resources
- Azimut Exploration
- Banyan Gold
- Benz Mining
- BMEX Gold
- Canada Nickel
- Canterra Minerals
- Cartier Resources
- Cassiar Gold
- Colorado Resources
- Eskay Mining
- Fireweed Zinc
- Fokus Mining
- Fury Gold Mines
- Galway Metals
- GFG Resources
- Golden Planet Mining
- Golden Ridge Resources
- Goliath Resources
- Granite Creek Copper
- GT Gold
- Halo Exploration
- Harte Gold
- Kodiak Copper
- KORE Mining
- Labrador Gold
- MacDonald Mines Exploration
- Magna Terra Minerals
- Matador Mining
- McEwen Mining
- Monarch Gold
- Moneta Porcupine Mines
- O3 Mining
- Orford Mining
- Palladium One Mining
- QMX Gold
- Radisson Mining
- Renforth Resources
- Rockhaven Resources
- Seabridge Gold
- Sitka Gold
- Tudor Gold
- TDG Gold
- Vanadium One Iron

For more information about PearTree Flow-Through Donation Financing opportunities, please visit peartreecanada.com or contact our team directly:



Lisa Davis, LL.B, ICD.D
CEO, PearTree Securities
lisa.davis@peartreecanada.com



Gary J. Baschuk
Managing Director, Mining
& Senior Geologist
gary.baschuk@peartreecanada.com



Ricky Chan, CPA, CA, CFA
Managing Director, Mining
ricky.chan@peartreecanada.com



Danny Mah, CFA
Managing Director, Energy
danny.mah@peartreecanada.com



Eliza Dinale, LL.B, LL.M
Director, Legal Services
eliza.dinale@peartreecanada.com

MESSAGE FROM ONTARIO PROSPECTORS ASSOCIATION, **GARRY CLARK**

During these uncharted times, the Ontario Prospectors Association is still trying to keep Ontario as one of the best jurisdictions to explore! The challenges over the last year have definitely been different than anyone has experienced, though with cooperation with the Ministry of Energy Northern Development and Mines (MENDM) staff we have had some success helping explorers in Ontario continue as an essential service without jeopardizing claim tenure. The OPA has participated with numerous claim managers to keep

our concerns in front of MENDM staff virtually, which has been a new and different way of doing business.

The campaign of Save Canadian Mining, which is led by Terry Lynch, is making progress to impede the short selling of stocks that has been hindering orderly trades of exploration companies since 2012. The OPA was incredibly happy to be asked to work on this project and thanks Terry for his leadership.

In general, looking across the province, exploration is doing very well with new discoveries and

expansions of known projects continuing. The largest concern that we see is a lack of people and equipment, especially with travel concerns across provincial and regional lines.

The pandemic situation has put a lot of stress both mentally and physically on all of us, but we will succeed through this and keep finding new deposits in our province. Mineral prices are at record levels and it seems that the investing public is focused back on exploration and development companies, which is refreshing to see.



MESSAGE FROM THE MINISTER OF ENERGY, NORTHERN DEVELOPMENT AND MINES, **GREG RICKFORD**

Despite one of the most challenging years in recent history, Ontario's mineral exploration and mining sector has proven to be one of our province's greatest success stories.

Our province is fortunate to be home to a vast wealth of mineral resources, and that is why our government continues to eliminate red tape and build a competitive tax framework to support this critical industry. And as a leader in mineral exploration and production, Ontario consistently ranks among the top ten jurisdictions in the world for exploration spending.

While the COVID-19 pandemic disrupted the course of regular business within the sector, I am optimistic about the future of mining in Ontario.

Mining companies moved quickly to put enhanced health and safety

measures in place, while others contributed to the fight against COVID-19 by donating meals, N95 masks, gloves and medical supplies. I want to thank the entire mining industry for its rapid and compassionate response to the pandemic.

Our mining and prospecting communities have long been a catalyst for creating jobs in Northern Ontario and will continue to play a vital role in the province's economic recovery.

It takes years and significant capital for an exploration project to transition to a producing mine, and our government has been proud to help several projects move forward in the last two years. Harte Gold's Sugar Zone Mine, Evolution Mining's Cochenour Mine and Newmont's electrified Borden Mine have started production, with IAMGOLD's Côté Gold Mine project and Argonaut Gold's Magino project given the green light to proceed. I am

proud to say all five projects are creating good jobs and economic opportunities for people in the north.

Our government will continue to work hard – alongside our partners at the Ontario Prospectors Association (OPA) – to ensure prospectors and the mineral exploration industry have a strong voice in Ontario, across Canada and around the world. We are taking measures to increase competitiveness and support an attractive investment climate so the sector can continue to grow, thrive and create good-paying jobs.

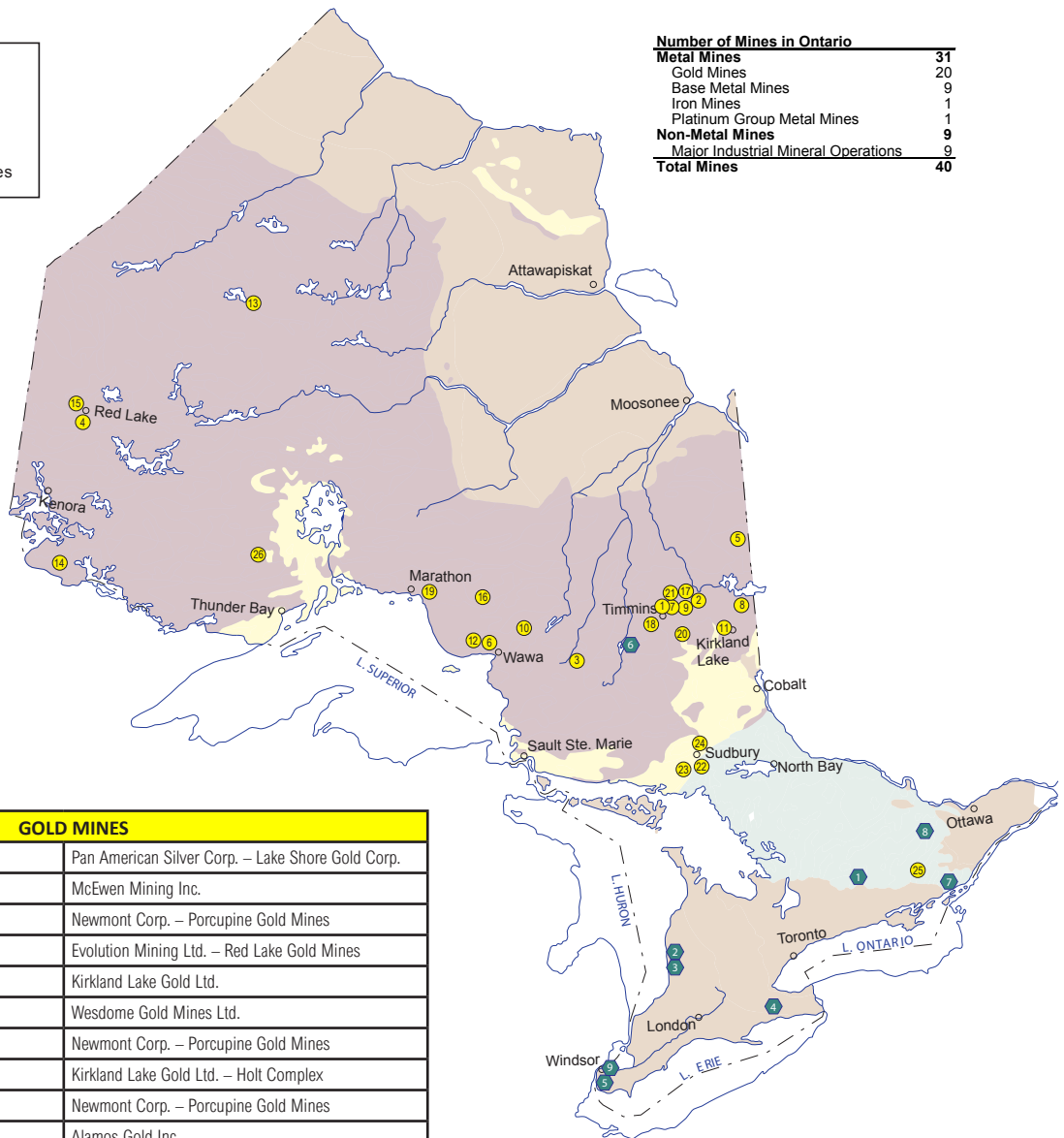
It is an exciting time for mineral exploration and development in Ontario. As we continue down the path to economic recovery, we look to a brighter future in supplying the world with critical minerals that will power the technology of tomorrow.

Ontario Mining Operations 2021

MINE LOCATIONS
Numbers relate locations to names in charts

- Metal Mines
- ◆ Industrial Mines/Quarries

Number of Mines in Ontario	
Metal Mines	31
Gold Mines	20
Base Metal Mines	9
Iron Mines	1
Platinum Group Metal Mines	1
Non-Metal Mines	9
Major Industrial Mineral Operations	9
Total Mines	40



GOLD MINES		
1.	Bell Creek Mine	Pan American Silver Corp. – Lake Shore Gold Corp.
2.	Black Fox Mine	McEwen Mining Inc.
3.	Borden Mine	Newmont Corp. – Porcupine Gold Mines
4.	Cochenuour Mine	Evolution Mining Ltd. – Red Lake Gold Mines
5.	Detour Lake Gold Mine	Kirkland Lake Gold Ltd.
6.	Eagle River Mine	Wesdome Gold Mines Ltd.
7.	Hollinger Mine	Newmont Corp. – Porcupine Gold Mines
8.	Holloway – Holt Mine	Kirkland Lake Gold Ltd. – Holt Complex
9.	Hoyle Pond Mine	Newmont Corp. – Porcupine Gold Mines
10.	Island Gold Mine	Alamos Gold Inc.
11.	Macassa Mine	Kirkland Lake Gold Ltd.
12.	Mishi Gold Mine	Wesdome Gold Mines Ltd.
13.	Musselwhite Mine	Newmont Corp.
14.	Rainy River Mine	New Gold Inc.
15.	Red Lake Mine	Evolution Mining Ltd. – Red Lake Gold Mines
16.	Sugar Zone Mine	Harte Gold Corp.
17.	Taylor Mine	Kirkland Lake Gold Ltd. – Holt Complex
18.	Timmins West Mine	Pan American Silver Corp. – Lake Shore Gold Corp.
19.	Williams Mine	Barrick Gold Corp.
20.	Young – Davidson Mine	Alamos Gold Inc.
BASE METAL MINES		
21.	Kidd Creek Mine	Glencore PLC – Glencore Canada Corp.
22.	Sudbury Operations: McCreedy West Mine	KGHM International Ltd.
23.	Sudbury Operations: Coleman Mine, Copper Cliff North Mine, Creighton Mine, Garson Mine, Totten Mine	Vale S.A. – Vale Canada Limited
24.	Sudbury Operations: Fraser Mine, Nickel Rim South Mine	Glencore PLC – Sudbury Integrated Nickel Operations

IRON MINES		
25.	Tomclid Iron Mine	Ferromin Inc.
PLATINUM GROUP METAL MINES		
26.	Lac des Iles Mine	Impala Platinum Holdings Ltd. – Impala Canada Ltd.
MAJOR INDUSTRIAL MINERAL OPERATIONS		
1.	Blue Mountain Operations (nepheline syenite)	Covia Holdings Corp.
2.	Goderich Brine Field (salt)	Compass Minerals Canada Corp.
3.	Goderich Mine (salt)	Compass Minerals Canada Corp.
4.	Hagersville Mine (gypsum)	CGC Inc.
5.	Ojibway Mine (salt)	K+S Windsor Salt Ltd.
6.	Penhorwood Mine (talc)	Imerys Talc
7.	St. Lawrence Mine (wollastonite)	Canadian Wollastonite
8.	Tatlock Quarry (calcium carbonate)	OMYA Canada Inc.
9.	Windsor Brine Field (salt)	K+S Windsor Salt Ltd.

GOLD MINES

BELL CREEK MINE (TIMMINS OPERATIONS)

Pan American Silver Corp. – Lake Shore Gold Corp.
• gold producer • underground

Mailing Address	3160 Florence Street, PO Box 1067 South Porcupine, ON P4N 7H9 Tel: (705) 269-4344
Website	www.panamericansilver.com
Mine Manager	David Bernier
Production Rate	4,458 tonnes per day (Bell Creek and Timmins West mines combined), 5,000 tonnes per day (mill capacity)
Production	2017 – 167,000 (Bell Creek and Timmins West mines combined) 2018 – 167,500 (management projection for Bell Creek and Timmins West mines combined) 2019 – 143,770 (Bell Creek and Timmins West mines combined) 2020 – 148,400 (Bell Creek and Timmins West mines combined) 2021 – 153,450 (management projection for Bell Creek and Timmins West mines combined)
Resources	17,200,000 tonnes at 3.02 g/t containing 1,670,500 ounces of gold (Measured and Indicated – Jun 2020) 5,000,000 tonnes at 3.27 g/t containing 529,300 ounces of gold (Inferred – Jun 2020)
Opened	2012
Employment	Approximately 680 employees at Timmins Operations (Voluntary temporary layoffs have been offered during the pandemic)
Notes	Ore from the Bell Creek and Timmins West mines is processed at the Bell Creek Mill. In March 2020, Lake Shore Gold offered its employees voluntary temporary layoffs in response to the COVID-19 pandemic. In 2020 during COVID-19, the Timmins West and Bell Creek mines continued to operate at 90 per cent of capacity. Reduced operating capacities on account of COVID-19 protocols and adjustments being made to the mining methods at the Timmins Bell Creek mine reduced gold production. The company spent US\$0.3 million on projects at Timmins, primarily related to purchasing equipment and materials for an expansion of operations, which was delayed due to the COVID-19 pandemic. Pan American also notes that some of the sustaining capital projects planned for 2020 will be carried over into 2021 as a result of COVID-19. In 2021, Pan American Silver will also drill test the Wetmore project near Bell Creek.

BLACK FOX MINE (BLACK FOX COMPLEX)

McEwen Mining Inc.
• gold producer • underground

Mailing Address	2839 Hwy 101 East, PO Box 605 Matheson, ON P0K 1N0 Tel: (705) 273-1077 Fax: (705) 273-1097
Website	www.mcewenmining.com
Mine Manager	Peter Mah, Chief Operating Officer
Production Rate	645 tonnes per day (mine), 2,000 tonnes per day (mill capacity)
Production	2017 – 66,733 ounces of gold 2018 – 48,889 ounces of gold 2019 – 35,693 ounces of gold 2020 – 37,500 ounces of gold (management projection) 2021 – 30,000 ounces of gold (management projection)
Resources	9,267,000 tonnes at 5.00 g/t containing 1,491,000 ounces of gold (Measured and Indicated – Apr 2020) 886,000 tonnes at 6.59 g/t containing 187,000 ounces of gold (Inferred – Apr 2020)
Opened	2009 (open pit, closed 2015), 2011 (underground)
Employment	257
Notes	The Black Fox Complex is comprised of the Black Fox and former Stock mines and the Black Fox-Stock mill. Black Fox Complex also includes the Froome, Tamarack and Grey Fox deposits. Development of the underground access ramp at Froome continued in 2020 and remains on track for first ore production in Q2-2021 with commercial production in Q4-2021. The Froome Deposit is expected to be in production for 2.5 years. McEwen plans to accelerate development of the Grey Fox Project to coincide with the completion of mining at the Froome deposit. In September 2020, a US\$10 million flow-through financing was completed, provided for exploration activities in the Timmins region over the next 1-2 years. The initial focus is on two high-potential targets, Stock West and Whiskey Jack. A drill program was started in September 2020 at Whiskey Jack in the Grey Fox area, part of the Black Fox Complex, whereby visible gold is showing in six of the nine new drill holes logged to date. McEwen plans to complete a preliminary economic assessment on the expansion potential for the Fox Complex in Q1-2021.

BORDEN GOLD MINE (PORCUPINE MINES)

Newmont Corp.

• gold producer • underground, open pit

Mailing Address	4315 Gold Mine Road, PO Box 70 South Porcupine, ON P0N 1H0 Tel: (705) 235-6589 Fax: (705) 235-6551
Website	www.newmont.com
Mine Manager	Marc Lauzier, Mine General Manager, Porcupine Mines Operations
Production Rate	9,600 tonnes per day (Porcupine Mines Operations combined), 9,979 tonnes per day (mill capacity)
Production	2019 – 223,000 ounces of gold (since the completion of the acquisition of the mine site as part of the Newmont Goldcorp transaction for Porcupine Mines Operations combined) 2020 – 325,000 ounces of gold (management projection for Porcupine Mines Operations combined) 2021 – 360,000 ounces of gold (guidance for Porcupine Mines Operations combined)
Resources	301,400,000 tonnes at 1.05 g/t containing 10,170,000 ounces of gold (Measured and Indicated – Dec 2019 for Porcupine Mines Operations combined) 109,200,000 tonnes at 0.74 g/t containing 2,610,000 ounces of gold (Inferred – Dec 2019 for Porcupine Mines Operations combined)
Opened Employment	2019 800 employees, 445 contractors (approximate figures for Porcupine Mines Operations combined)
Notes	Porcupine operations include the Hoyle Pond, Hollinger and Borden Lake Mines as well as the Dome Mill. All production from the Porcupine mines report to the Dome Mill for refining. In 2020, Gold production increased four per cent, primarily driven by higher ore grade mined from Borden, which achieved commercial production in the fourth quarter of 2019. US\$25 million in development capital expenditures are planned at Porcupine Mines in 2021.

COCHENOUR GOLD MINE (RED LAKE GOLD MINES)

Evolution Mining Ltd.

• gold producer • underground

Mailing Address	17 Mine Road, Bag 2000 Balmertown, ON P0V 1C0 Tel: (807) 735-2077 Fax: (807) 735-2765
Website	www.evolutionmining.com.au
Mine Manager	Kirsty Liddicoat, General Manager, Red Lake Operations
Production Rate	1,557 tonnes per day (Red Lake Gold Mines Operations combined)

Production	2019 – 155,000 ounces of gold (management projection for Red Lake Gold Mines operations combined) 2020 – 27,428 ounces of gold (reported actual for Red Lake Gold Mines operations combined)
Resources	22,760,000 tonnes at 7.77 g/t containing 5,687,000 ounces of gold (Measured and Indicated for Red Lake Gold Mines operations combined – Dec 2019) 25,330,000 tonnes at 6.49 g/t containing 5,287,000 ounces of gold (Inferred for Red Lake Gold Mines operations combined – Dec 2019)
Opened Employment	1919 750 employees and contractors (approximate figures for Red Lake Gold Mines Operations combined)
Notes	Cochenour achieved commercial production in April 2019. Production comes from the old Cochenour mine and the new Upper Cochenour Zone. During Q3-2020, production at the mine was affected by a forest fire that resulted in a brief temporary suspension of operations. Evolution is working towards achieving 1,200 metres of underground mine development per month at Red Lake. Six underground drill rigs are conducting a resource definition and exploration drilling program onsite, with 6,078 metres drilled in 35 holes at Cochenour during the quarter. Drilling six long step-out holes (totalling 3,238m) at Cochenour targeting new discoveries returned strong results with the best intersections of 1.27m grading 11.72g/t Au from 265.75m (Thor) and 0.31m grading 627.75g/t Au from 273.95m (Voss).



- Ground VLF Surveys • No permit or cut lines required
- Inversion Modeling • Geological Consulting
- Prospecting • Max Min • MPP Probe • Magnetometer
- Historical VLF Data Processing & Modelling

P: 705.946.6054 | C: 705.943.9399 | E: superiorexploration@yahoo.cawww.superior-exploration.ca

DETOUR LAKE MINE

Kirkland Lake Gold Ltd.

• gold producer • open pit

Mailing Address	86 2 nd Street, PO Box 1325 Cochrane, ON P0L 1C0 Tel: (647) 847-2089 Fax: (705) 272-2558
Website	www.kl.gold
Mine Manager	Duncan King, Vice President, Canadian Operations
Production Rate	63,445 tonnes per day (mine), 69,100 tonnes per day (mill capacity)
Production	2017 – 571,463 ounces of gold 2018 – 621,128 ounces of gold 2019 – 601,566 ounces of gold 2020 – 530,000 ounces of gold (management projection) 2021 – 700,000 ounces of gold (guidance)
Resources	592,650,000 tonnes at 1.01 g/t containing 19,262,000 ounces of gold (Measured and Indicated – Dec 2019) 43,900,000 tonnes at 0.90 g/t containing 1,273,000 ounces of gold (Inferred – Dec 2019)
Opened	2013
Employment	800 employees, 200 contractors
Notes	Exploration work at Detour Lake is ongoing and the company was targeting 70,000 m by the end of 2020. The Company plans to increase the number of drills to between 10-12 drills early in 2021. Drilling is in support of an updated mineral reserve estimate as well as the completion of a new production plan. The company is targeting to complete the current US\$50-million-dollar exploration program at Detour Lake by the end of 2021 and releasing a new mine plan in 2022. Approximately US\$165 million in growth capital expenditures in 2021 are planned at Detour Lake. Other planned projects include mill improvements, increased tailings capacity, completion of an assay lab and other enhancements to site infrastructure.

EAGLE RIVER MINE

Wesdome Gold Mines Ltd.

• gold • underground

Mailing Address	93 Mission Road, PO Box 1520 Wawa, ON P0S 1K0 Tel: (705) 856-2721 Fax: (705) 856-7173
Website	www.wesdome.com
Mine Manager	Jean-Guy Leclair, General Manager, Eagle Division
Production Rate	538 tonnes per day (mine), 970 tonnes per day (mill capacity)
Production	2017 – 50,996 ounces of gold 2018 – 67,315 ounces of gold 2019 – 88,617 ounces of gold 2020 – 87,560 ounces of gold 2021 – 96,000 ounces of gold (management projection)
Resources	1,566,000 tonnes at 13.13 g/t containing 661,000 ounces of gold (Measured and Indicated – Dec 2019) 403,000 tonnes at 12.30 g/t containing 159,000 ounces of gold (Inferred – Dec 2019)
Opened	1995
Employment	220
Notes	Eagle River Complex includes the Eagle River Mine and the Mishi mine and mill. In April 2020, the company temporarily suspended operations due to COVID-19. In Q2-2020, the company gradually restarted operations at reduced capacity. The program that was planned for 2020 on expanding the Falcon zones at Eagle River consists of 72,000 m of underground exploration drilling, 47,000 m of definition drilling and 33,500 m of surface drilling. In 2020, drilling extended the Falcon Zone over 1 km down plunge and is interpreted to connect with Zone 7, currently being mined underground. The high grade 300 East Zone has now been extended from the 750 m level to the 1,400 m level. The company forecasted \$16 million to be spent on exploration program at Eagle River in 2021. Growth Capital is budgeted to range between \$22 and \$26 million, which includes surface exploration, transition to electric underground equipment, Falcon Zone development and completion of the ventilation upgrade. Total metres drilled in 2021 are budgeted to range between 164,000 and 174,000 m for five underground and three surface drill rigs.

HOLLINGER MINE (PORCUPINE MINES)

Newmont Corp.

• gold producer • open pit

Mailing Address	4315 Gold Mine Road, PO Box 70 South Porcupine, ON P0N 1H0 Tel: (705) 235-6589 Fax: (705) 235-6551
Website	www.newmont.com
Mine Manager	Marc Lauzier, Mine General Manager, Porcupine Mines Operations
Production Rate	9,600 tonnes per day (Porcupine Mines Operations combined), 9,979 tonnes per day (mill capacity)
Production	2017 – 272,000 ounces of gold (Porcupine Mines Operations combined) 2018 – 259,000 ounces of gold (Porcupine Mines Operations combined) 2019 – 223,000 ounces of gold (since the completion of the acquisition of the mine site as part of the Newmont Goldcorp transaction for Porcupine Mines Operations combined) 2020 – 325,000 ounces of gold (management projection for Porcupine Mines Operations combined)

Resources

2021 – 360,000 ounces of gold (guidance
for Porcupine Mines Operations
combined)

301,400,000 tonnes at 1.05 g/t
containing 10,170,000 ounces of gold
(Measured and Indicated – Dec 2019 for
Porcupine Mines Operations combined)
109,200,000 tonnes at 0.74 g/t
containing 2,610,000 ounces of gold
(Inferred – Dec 2019 for Porcupine Mines
Operations combined)

**Opened
Employment
Notes**

2014

200 (approximate)

The Porcupine operations include the
Hoyle Pond, Hollinger and Borden Lake
Mines as well as the Dome Mill. The
Hollinger Mine is expected to operate
until the first quarter of 2023. On July
20, 2020, Newmont terminated the
the environmental assessment of the
proposed 70,000 tpd Century Project.
Based on Newmont's 2021 outlook,
Porcupine is expected to benefit
from higher grades at the Borden and
Hollinger mines in 2022 before Hollinger
begins to ramp down in 2023.

**GEOPHYSICAL SERVICES**

- INDUCED POLARIZATION
 - Magnetic & VLF
 - EM MaxMin
 - EM Pulse
 - Gravity
 - GPS
- Compilation
- Interpretation

Pierre Simoneau, M.Sc. P.Geol
Ontario Regional Manager

Ontario 807-707-7585
Member APGO, NWOPA, OGQ, AIGNB
psimoneau@geosig.ca

Quebec 418-877-7382
geosig@geosig.ca
www.geosig.ca

THE ESG REPORTING
SOFTWARE DRIVING
INVESTMENT DOLLARS
TO YOUR COMPANY.

ONYEN – ESG
REPORTING MADE EASY.



ONYEN
ESG Reporting Software

sales@onyen.com
778.840.7104
onyen.com

HOLLOWAY-HOLT MINE (HOLT COMPLEX)

Kirkland Lake Gold Ltd.

• gold producer • underground

Mailing Address	Highway 101 East, Box 609 Matheson, ON P0K 1N0 Tel: (705) 567-4862 Fax: (705) 567-4863
Website	www.klgold.com
Mine Manager	Duncan King, Vice President, Canadian Operations
Production Rate	Holloway Area: 450 tonnes per day (capacity) Holt Area: 2,366 tonnes per day (mine), 3,000 tonnes per day (mill capacity)
Production	Holloway Area: 2017 – 287 ounces of gold 2018 – 942 ounces of gold 2019 – 20,000 (management projection) Holt Area: 2017 – 66,677 ounces of gold 2018 – 67,770 ounces of gold 2019 – 113,952 ounces of gold (Holt Complex operations combined) 2020 – 29,391 ounces of gold (Holt Complex operations combined) 2021 – Not available
Resources	Holloway Area: 2,452,000 tonnes grading 4.20 g/t, containing 328,000 ounces of gold (Measured and Indicated – Dec 2018) 5,479,000 tonnes grading 4.10 g/t, containing 729,000 ounces of gold (Inferred – Dec 2018) Holt Area: 10,473,000 tonnes grading 4.10 g/t, containing 1,385,000 ounces of gold (Measured and Indicated – Dec 2018) 8,523,000 tonnes grading 4.70 g/t, containing 1,286,000 ounces of gold (Inferred – Dec 2018)
Opened	Holloway Area: 2009 Holt Area: 2010
Employment	Holloway Area: 116 (estimate) Holt Area: 168
Notes	The Holt Mill processes ore from the Holloway-Holt and Taylor Mines. Production guidance in 2020 includes 29,391 ounces of production at Holt Complex, where operations were suspended as a precaution against COVID-19, effective April 2, 2020, and put under temporary care and maintenance until further notice. A strategic review is underway to assess a potential restart of the operations. Newmont has invested US\$75 million to acquire an option on certain mineral rights at the Holt Mine. The strategic alliance between Newmont and Kirkland Lake Gold will focus on the areas mineral exploration potential.

HOYLE POND MINE (PORCUPINE MINES)

Newmont Corp.

• gold producer • underground

Mailing Address	4315 Gold Mine Road, PO Box 70 South Porcupine, ON P0N 1H0 Tel: (705) 235-6589 Fax: (705) 235-6551
Website	www.newmont.com
Mine Manager	Marc Lauzier, General Mines Manager, Porcupine Mines Operations
Production Rate	9,600 tonnes per day (Porcupine Mines Operations combined), 9,979 tonnes per day (mill capacity)
Production	2017 – 272,000 ounces of gold (Porcupine Mines Operations combined) 2018 – 259,000 ounces of gold (Porcupine Mines Operations combined) 2019 – 223,000 ounces of gold (since the completion of the acquisition of the mine site as part of the Newmont Goldcorp transaction for Porcupine Mines Operations combined) 2020 – 325,000 ounces of gold (management projection for Porcupine Mines Operations combined) 2021 – 360,000 ounces of gold (guidance for Porcupine Mines Operations combined)
Resources	301,400,000 tonnes at 1.05 g/t containing 10,170,000 ounces of gold (Measured and Indicated – Dec 2019 for Porcupine Mines Operations combined) 109,200,000 tonnes at 0.74 g/t containing 2,610,000 ounces of gold (Inferred – Dec 2019 for Porcupine Mines Operations combined)
Opened Employment	1985 800 employees, 445 contractors (approximate figures for Porcupine Mines Operations combined)
Notes	The Porcupine operations include the Hoyle Pond, Hollinger and Borden Lake Mines as well as the Dome Mill. Approximately 60 per cent of the gold from Porcupine Mines comes from the Hoyle Pond underground mine. In 2020, a 20,000 m drill program was expected to be completed on the Hoyle Pond Extension.

ISLAND GOLD MINE**Alamos Gold Inc.**

• gold producer • underground

Mailing Address 15 Goudreau Road, PO Box 456
Dubreuilville, ON P0S 1B0
Tel: (705) 884-1608
Fax: (815) 797-0166

Website www.alamosgold.com

Mine Manager Austin Hemphill, General Manager

Production Rate 979 tonnes per day (mine), 1,200 tonnes per day (mill capacity)

Production 2017 – 98,800 ounces of gold
2018 – 105,800 ounces of gold
2019 – 150,400 ounces of gold
2020 – 135,000 ounces of gold (revised guidance)
2021 – 137,500 ounces of gold (guidance)

Resources 4,522,000 tonnes at 10.05g/t containing 1,399,000 ounces of gold (Measured and Indicated – Dec 2019)
5,392,000 tonnes at 13.26 g/t containing 2,298,000 ounces of gold (Inferred – Dec 2019)

Opened 2007

Employment 341 employees, 217 contractors

Notes Ore from Island Gold Mine is processed at the nearby Kremzar Mill. The Phase III Expansion of Island Gold to 2,000 tonnes per day is underway, which is expected to increase output 72 per cent to 236,000 ounces a year from 2025. The project should also reduce all-in sustaining costs 30 per cent to US\$534 per ounce and double the mine life to 16 years. Island Gold's exploration budget of US\$25 million for 2021 includes 27,500 m of on mine site surface drilling and 52,000 m of underground drilling. A regional exploration program, including 25,000 m of drilling, is also planned for 2021. Capital spending at Island Gold is expected to be US\$125 million in 2021, reflecting the ramp up of spending on the Phase III Expansion project including detailed engineering and shaft construction work.

MACASSA MINE**Kirkland Lake Gold Ltd.**

• gold producer • underground

Mailing Address 1350 Government Road West,
PO Box 370
Kirkland Lake, ON P2N 3J1
Tel: (705) 567-5208
Fax: (705) 568-6444

Website www.klgold.com

Mine Manager Evan Pelletier, Vice President, Kirkland Lake Operations

Production Rate 857 tonnes per day (mine), 2,200 tonnes per day (mill capacity)

Production 2017 – 194,273 ounces of gold
2018 – 240,126 ounces of gold
2019 – 241,297 ounces of gold
2020 – 183,038 ounces of gold
2021 – 237,500 ounces of gold (guidance)

Resources 5,249,000 tonnes at 18.90 g/t containing 3,183,000 ounces of gold (Measured and Indicated – Dec 2019)
1,185,000 tonnes at 16.00 g/t containing 611,000 ounces of gold (Inferred – Dec 2019)

Opened 2002

Employment 900

Notes Construction of the 5,450-foot #4 shaft at Macassa began in 2018. Phase 1 of the new shaft is expected to be completed in 2022 and result in increased hoisting capacity to 4,000 tpd and production of 330,000 ounces. A phase 2 shaft expansion is also being planned to the 7,000 foot level, planned to be completed by the end of 2023 and will result in production of 400,000 ounces per year. Growth capital expenditures at Macassa is targeted at US\$90 million, with the #4 shaft project expected to account for US\$60 million and the remainder related to mine ventilation upgrades and mill improvements. Exploration guidance for 2021 is estimated at US\$47.5 million at Macassa.

**Cost Efficient Ultra light
Diamond DRILL
SPECIALISTS**
HELICOPTER PORTABLE
WE DO IT EVERYWHERE

Box 123 Husu Road
Kaministiquia, Ontario
Canada P0T 1X0

Cell: 807.627.5236
Email: emosl@nwon.com



Norske Drilling

777626 ONTARIO LIMITED

Since 1986

Eric Mosley
Geologist, HBSc. '77

MISHI MINE**Wesdome Gold Mines Ltd.**

• gold producer • open pit

Mailing Address	93 Mission Road, PO Box 1520 Wawa, ON P0S 1K0 Tel: (705) 856-2721 Fax: (705) 856-7173
Website	www.wesdome.com
Mine Manager	Jean-Guy Leclair, General Manager, Eagle Division
Production Rate	110 tonnes per day
Production	2017–7,985 ounces of gold 2018–4,310 ounces of gold 2019–3,072 ounces of gold 2020–2,718 ounces of gold 2021–2,500 (management projection)
Resources	116,000 tonnes at 2.82 g/t containing 10,500 ounces of gold (Measured and Indicated–Dec 2019) 3,182,000 tonnes at 2.10 g/t containing 212,000 ounces of gold (Inferred–Dec 2019)
Opened	2012
Employment	40 (approximately)
Notes	Eagle River Complex includes the Eagle River Mine and the Mishi mine and mill. In April 2020, the company temporarily suspended operations due to COVID-19 and resumed production in Q3-2020. Production levels in 2020 was not significantly impacted by COVID-19. By Q4 2020, Mishi stockpile contained over 40,000 tonnes of ore and is planned to be milled in 2021.

MUSSELWHITE MINE**Newmont Corp.**

• gold producer • underground

Mailing Address	PO Box 7500 Thunder Bay, ON P7B 6S8 Tel: (807) 928-2200 Fax: (807) 928-2067
Website	www.newmont.com
Mine Manager	Don Burke, Mine General Manager
Production Rate	2,317 tonnes per day (mine), 4,500 tonnes per day (capacity)
Production	2017–236,000 ounces of gold 2018–205,000 ounces of gold 2019–44,500 ounces of gold (estimated) 2020–95,000 ounces of gold (management projection) 2021–200,000 ounces of gold (management projection)
Resources	16,300,000 tonnes at 5.57 g/t containing 2,920,000 ounces of gold (Measured and Indicated–Dec 2019) 3,200,000 tonnes at 4.37 g/t containing 440,000 ounces of gold (Inferred–Dec 2019)
Opened	1997
Employment	Approximately 700 employees
Notes	Processing activities resumed in

February 2020, primarily from surface stockpiles. Underground mine development and rehabilitation of the underground conveyor following the fire in March 2019 continued in early 2020. The mine was placed on care and maintenance in response to COVID-19 in March 2020. Newmont reported that mine was fully operational by September 2020. The company remains focused on completing a 5,000 tpd raise bore winze at the mine. Musselwhite is expected to increase production in 2021 and to deliver steady production throughout 2022-2023.

RAINY RIVER MINE**New Gold Inc.**

• gold producer • underground, open pit

Mailing Address	5967 Highway 11/71, PO Box 5 Emo, ON POW 1E0 Tel: (807) 482-0900
Website	www.newgold.com
Mine Manager	Suresh Kalathil, General Manager
Production Rate	32,178 tonnes per day (mine), 24,096 tonnes per day (mill)
Production	2017–37,047 ounces of gold 2018–227,284 ounces of gold 2019–253,772 ounces of gold 2020–228,919 ounces of gold 2021–Not available
Resources	100,698,000 tonnes graded at 1.41 g/t gold and 3.52 g/t of silver, containing 4,549,000 ounces of gold and 11,384,000 ounces of silver (Measured and Indicated–Dec 2019) 3,479,000 tonnes graded at 1.77 g/t gold and 2.42 g/t of silver, containing 198,000 ounces of gold and 268,000 ounces of silver (Inferred–Dec 2019)
Opened	2017
Employment	Approximately 800 employees and 500 contractors
Notes	The Rainy River Mine temporarily suspended operations for two weeks due to COVID-19 in March 2020. The company's Intrepid Zone decline resumed in August. In the latter part of Q4-2020, drilling permits were received and an exploration drilling program was planned for the northeast trend area, located approximately 18 km northeast of the Rainy River Mine. The 8,000 m drilling campaign has been designed in two phases and will test previously identified high-priority targets.

RED LAKE GOLD MINE (RED LAKE GOLD MINES)
 Evolution Mining Ltd.
 • gold producer • underground

Mailing Address 17 Mine Road, Bag 2000
 Balmertown, ON P0V 1C0
 Tel: (807) 735-2077
 Fax: (807) 735-2765

Website www.evolutionmining.com.au

Mine Manager Kirsty Liddicoat, General Manager,
 Red Lake Operations

Production Rate 1,557 tonnes per day (Red Lake Gold
 Mines Operations combined)

Production 2019 – 155,000 ounces of gold
 (management projection for Red Lake
 Gold Mines Operations combined)
 2020 – 27,428 ounces of gold (reported
 actual for Red Lake Gold Mines
 Operations combined)
 2021 – 130,000 ounces of gold
 (management projection for Red Lake
 Gold Mines Operations combined)

Resources 22,760,000 tonnes at 7.77 g/t
 containing 5,687,000 ounces of gold
 (Measured and Indicated for Red Lake
 Gold Mines Operations combined – Dec
 2019)
 25,330,000 tonnes at 6.49 g/t
 containing 5,287,000 ounces of gold

**Opened
 Employment**

(Inferred for Red Lake Gold Mines
 Operations combined – Dec 2019)
 1949

750 employees and contractors
 (approximate figures for Red Lake
 Gold Mines Operations combined)
 Operations at Red Lake include the
 Red Lake and Campbell areas, the
 Cochenour mine, and the Campbell
 and Red Lake processing plants.
 During Q3-2020 production was
 affected by a forest fire that resulted
 in a brief temporary suspension of
 operations. Evolution is working
 towards achieving 1,200 m of mine
 development per month. An updated
 resource statement is expected in
 February 2021. The prefeasibility
 study is expected in Q2-2021.

Notes



Introducing the
NEW Niton XL5PLUS

XRF designed to
 rock your world



Fast: Determine real-time geochem data in seconds
Light: Compact geometry and lightweight at 1.3 kg
Powerful: 5W x-ray tube returns lab quality results
Versatile: Analysis from exploration to processing
Connected: Wirelessly transmit data from device to PC

Learn more at thermofisher.com/XL5

ThermoFisher
 SCIENTIFIC

Sales, Service Repair and Recalibrations in Canada with Elemental Controls
 866-544-9974 www.elementalcontrols.com

**YOUR CRUSHER
 SPECIALISTS
 SINCE 1965**

Manufacturers of the Birdsboro-Buchanan line of Jaw Crushers
 Complete service and repairs to all Mining Equipment
 The only Blake Type Crusher Manufacturer to offer
 a **Hydraulic Toggle!**



P R ENGINEERING
 LIMITED

249 Toronto Avenue, Oshawa, Ontario, Canada L1H 3C2
 T: 905.579.9721
www.prengineering.com

SUGAR ZONE MINE**Harte Gold Corp.**

• gold producer • underground

Mailing Address	113 Tukanee Lake Rd White River, ON P0M 3G0 Tel: (416) 853-0002 Fax: (807) 822-2398
Website	www.hartegold.com
Mine Manager	Dan Gagnon, General Manager
Production Rate	490 tonnes per day (mine), 800 tonnes per day (mill capacity)
Production	2019 – 27,316 ounces of gold 2020 – 25,649 ounces of gold 2021 – 62,500 ounces of gold (guidance)
Resources	4,243,000 tonnes at 8.12 g/t containing 1,108,000 ounces of gold (Measured and Indicated – Apr 2019) 2,954,000 tonnes at 5.88 g/t containing 558,000 ounces of gold (Inferred – Apr 2019)
Opened	2019
Employment	85 employees, 45 contractors
Notes	A temporary shutdown in March 2020 due to COVID-19 led Harte to reduce annual production guidance. A feasibility study is ongoing to evaluate an expansion of the site to 1,200 tpd, with results expected in Q1-2021. In 2020, infill drilling targeted both the Sugar Zone from underground and Middle Zone from surface with two drill rigs. The company is currently mining ore from the Sugar Zone North and South areas. Ramp development to the Middle Zone continued for the quarter and the Company expects to open the Middle Zone for initial ore production by H2-2021.

TAYLOR MINE (HOLT COMPLEX)**Kirkland Lake Gold Ltd.**

• gold producer • underground

Mailing Address	Highway 101 East, PO Box 609 Matheson, ON P0K 1N0 Tel: (705) 567-4862 Fax: (705) 567-4863
Website	www.klgold.com
Mine Manager	Duncan King, Vice President, Canadian Operations
Production Rate	600 tonnes per day
Production	2017 – 50,764 ounces of gold 2018 – 58,633 ounces of gold 2019 – 52,500 ounces of gold (management projection) 2020 – 29,391 ounces of gold (Holt Complex operations combined) 2021 – Not available
Resources	1,577,000 tonnes at 4.90 g/t containing 250,000 ounces of gold (Measured and Indicated – Dec 2018) 1,988,000 tonnes at 5.30 g/t containing 337,000 ounces of gold (Inferred – Dec 2018)

**Opened
Employment
Notes**

2015

60

The Holt Complex includes the Taylor mine, Holloway-Holt mine and Holt mill. Ore from the Taylor mine is processed at Holt mill. In April 2020, Kirkland Lake Gold suspended operations and placed Taylor mine on care and maintenance. On July 16, 2020, the Holt and Taylor mines (Holt Complex) were suspended until further notice.

TIMMINS WEST MINE (TIMMINS OPERATIONS)**Pan American Silver Corp. - Lake Shore Gold Corp.**

• gold producer • underground

Mailing Address	1515 Government Road South Timmins, ON P4R 1N4 Tel: (705) 269-4344 Fax: (705) 268-1794
Website	www.panamericansilver.com
Mine Manager	David Bernier
Production Rate	4,458 tonnes per day (Bell Creek and Timmins West mines combined), 5,000 (mill capacity)
Production	2017 – 167,000 (Bell Creek and Timmins West mines combined) 2018 – 167,500 (management projection for Bell Creek and Timmins West mines combined) 2019 – 143,770 (Bell Creek and Timmins West mines combined) 2020 – 152,000 (management projection for Bell Creek and Timmins West mines combined) 2021 – 121,274 (estimate for Bell Creek and Timmins West mines combined)
Resources	17,200,000 tonnes at 3.02 g/t containing 1,670,500 ounces of gold (Measured and Indicated – Jun 2020) 5,000,000 tonnes at 3.27 g/t containing 529,300 ounces of gold (Inferred – Jun 2020)
Opened	2011
Employment	Approximately 680 employees at Timmins Operations (Voluntary temporary layoffs have been offered during the pandemic)
Notes	Ore from Timmins West Mine is processed at the Bell Creek Mill. In 2020 during COVID-19, the Timmins West and Bell Creek mines (together “Timmins”) have continued to operate at 90 per cent of capacity. In March 2020, Lake Shore Gold offered its employees voluntary temporary layoffs in response to the COVID-19 pandemic. In April 2020, Pan American reduced its throughput by 10-20 per cent at Timmins in response to COVID-19 breakout. Pan American also notes that some of the sustaining capital projects planned for 2020 will be carried over into 2021 as a result of COVID-19.

WILLIAMS MINE (HEMLO MINE)
Barrick Gold Corporation
 • gold producer • underground, open pit

Mailing Address PO Bag 500
 Marathon, ON P0T 2E0
 Tel: (807) 238-1041
 Fax: (807) 238-1019

Website www.barrick.com

Mine Manager Adam Foulstone, General Manager

Production Rate 5,436 tonnes per day (mine), 11,500 tonnes per day (capacity)

Production 2017 – 196,000 ounces of gold
 2018 – 171,000 ounces of gold
 2019 – 213,000 ounces of gold
 2020 – 223,000 ounces of gold
 2021 – 255,400 ounces of gold (management projection)

Resources 42,800,000 tonnes at 2.29 g/t containing 3,100,000 ounces of gold (Measured and Indicated – Dec 2019)
 9,100,000 tonnes at 3.50 g/t containing 1,000,000 ounces of gold (Inferred – Dec 2019)

Opened Employment Notes 1985
 Approximately 700 employees
 In 2020, a 4,500 m surface drilling program commenced at the C Zone to test the down-plunge extension of mineralization. District scale exploration continues to test newly discovered mineralization in the Blackfly area west of the C Zone. COVID-19 caused a delay in the ramp-up of the underground development. 2020 production guidance was not affected by COVID-19 at Hemlo.

YOUNG-DAVIDSON MINE
Alamos Gold Inc.
 • gold producer • underground

Mailing Address Highway 566, PO Box 187
 Matachewan, ON P0K 1M0
 Tel: (705) 565-9800
 Fax: (705) 565-2387

Website www.alamosgold.com

Mine Manager Luc Guimond, General Manager

Production Rate 5,317 tonnes per day (mine), 7,500 tonnes per day (capacity)

Production 2017 – 200,000 ounces of gold
 2018 – 180,000 ounces of gold
 2019 – 188,000 ounces of gold
 2020 – 140,000 ounces of gold (revised guidance)
 2021 – 197,500 ounces of gold (guidance)

Resources 48,984,000 tonnes at 2.76 g/t containing 4,343,300 ounces of gold (Measured and Indicated – Dec 2019)
 1,360,000 tonnes at 2.40 g/t containing 105,000 ounces of gold (Inferred – Dec 2019)

Opened Employment Notes 2012 (open pit), 2013 (underground)
 630 employees, 136 contractors
 In July 2020, Alamos Gold completed the lower mine expansion and commissioned the Northgate shaft, which is expected to increase production to 8,000 tpd in 2021. \$7 million has been budgeted for exploration at Young-Davidson in 2021. The 2021 program includes 23,000 m of underground drilling and 3,000 m of surface drilling. The focus of the underground exploration drilling program will be to expand mineralization in five target areas identified within proximity to existing underground infrastructure. In addition, 3,000 m of surface drilling is planned to test near-surface targets to both the east and west along strike from the Young-Davidson Mine.

For weather equipment that works as hard as you do



We're serious about the weather

PO Box 900, Ignace, ON P0T 1T0
(807) 934 8403 | www.signalweather.ca



MORGAN FUELS
 Serving Northwestern Ontario Since 1935
PROPANE • FUELS • LUBRICANTS

PROPANE
 Residential, Commercial, Industrial and Construction

FUELS
 Gasoline, Clear and Dyed Diesel & Aviation

Bulk Fuel Delivery • Oils Lubes • Propane • Drummed Jet and Aviation fuels

Dryden 807-937-2149 Kenora 807-468-6050 Pigeon Lake 807-928-2261 Red Lake 807-735-9920 Sioux Lookout 807-737-2250 Winnipeg 204-832-2446

www.morganfuels.ca info@morganfuels.ca 1-(800)-661-3635

OTHER METAL MINES

KIDD CREEK MINE

Glencore PLC

• zinc, copper, lead, silver, cadmium, indium, sulphuric acid • underground

Mailing Address	11335 Highway 655 North, PO Bag 2002 Timmins, ON P4N 7K1 Tel: (705) 264-5200 Fax: (705) 267-8709
Website	www.glencore.com www.kiddoperations.ca
Mine Manager	Mark Furlotte, General Manager, Kidd Operations
Production Rate	7,900 tonnes per day (capacity)
Production	2017 – 39,900 tonnes copper, 72,400 tonnes zinc, 2,271,000 ounces of silver 2018 – 33,600 tonnes copper, 65,900 tonnes zinc, 1,893,000 ounces of silver 2019 – 33,500 tonnes copper, 67,600 tonnes zinc, 1,654,000 ounces of silver (estimate) 2020 – 36,800 tonnes copper, 62,200 tonnes zinc, 1,701,980 ounces of silver (estimate) 2021 – 33,210 tonnes copper, 59,500 tonnes zinc, 2,025,497 ounces of silver (estimate)
Resources	8,600,000 tonnes at 1.80% copper, 4.00% zinc and 48.00 g/t silver (Measured and Indicated – Dec 2019) 3,500,000 tonnes at 2.00% copper, 7.00% zinc and 60.00 g/t silver (Inferred – Dec 2019)
Opened	1966
Employment	850 (employees and contractors)
Notes	The company is currently mining the 9,600-foot level with the shaft extending to a depth of close to 10,000 feet. The Kidd Creek Mine is expected to produce through to 2023. In H1-2020, copper concentrate production decreased by 16 per cent while silver production increased by 34 per cent. There was no change in zinc production compared to H1-2019.

LAC DES ILES MINE

Impala Platinum Holdings Ltd. - Impala Canada Ltd.

• platinum group metals • underground, open pit

Mailing Address	PO Box 10547 Thunder Bay, ON P7B 6T9 Tel: (807) 622-8833 Fax: (807) 622-7437
Website	www.nap.com
Mine Manager	Bryan Wilson, General Manager
Production Rate	6,000+ tonnes per day (underground), 12,000 tonnes per day (mill)
Production	2017 – 208,923 ounces of palladium, 12,267 ounces of platinum 2018 – 242,686 ounces of palladium, 16,368 ounces of platinum 2019 – 227,500 ounces of palladium, 0 ounces of platinum (management projection) 2020 – 208,000 ounces of palladium, 18,000 ounces of platinum (management projection) 2021 – 190,000 ounces of palladium, 18,000 ounces of platinum (management projection)
Resources	67,900,000 tonnes at 2.25 g/t palladium, 0.21 g/t platinum, 0.16 g/t gold, NA copper and NA nickel (Measured and Indicated – Jun 2020) 12,000,000 tonnes at 2.49 g/t palladium, 0.21 g/t platinum, 0.13 g/t gold, NA copper and NA nickel (Inferred – Jun 2020)
Opened	1993 (open pit), 2006 (underground)
Employment	Approximately 500 employees and contractors
Notes	Ore from Lac des Iles Mine is shipped to Vale's Sudbury operations for smelting. 2020 production was impeded by the COVID-19 pandemic which led to a six-week closure. The company reported being at 75 per cent of capacity at year-end. The mine is expected to produce at 90 per cent capacity in Q1-2021.

MCCREEDY WEST MINE
KGHM International Ltd.
 • nickel, copper, platinum, palladium • underground

Mailing Address 23 McCreedy West Mine Road,
 Levack, ON P0M 2C0
 Tel: (705) 966-3021
 Fax: (705) 966-3017
Website www.kghm.com
Mine Manager Thomas H A Hopkins, General Manager
Production Rate 2,425 tonnes per day (capacity)
Production 2017 –1,100 tonnes nickel, 9,400 tonnes
 copper, 38,000 ounces of precious
 metals
 2018 –900 tonnes nickel, 7,400 tonnes
 copper, 30,500 ounces of precious
 metals
 2019 –0 tonnes nickel, 4,200 tonnes
 copper, 37,300 ounces of precious metals
 (estimate)
 2020 –2,200 tonnes nickel, 0 tonnes
 copper, 2,000 ounces of precious metals
 (estimate)
 2021 –2,200 tonnes nickel, 0 tonnes
 copper, 2,000 ounces of precious metals
 (estimate)
Resources 12,972,000 tonnes at 0.91% copper,
 1.25% nickel, 0.17 g/t platinum, 0.23 g/t
 palladium and 0.07 g/t gold containing

**Opened
 Employment
 Notes**

118,467 tonnes copper, 161,773 tonnes
 nickel, 68,867 ounces platinum, 93,977
 ounces palladium and 29,707 ounces gold
 (Sudbury Operations Total Measured and
 Indicated – Dec 2014)
 4,594,000 tonnes at 1.16% copper,
 1.43% nickel, 0.41 g/t platinum, 0.58 g/t
 palladium and 0.16 g/t gold containing
 53,095 tonnes copper, 65,529 tonnes
 nickel, 59,897 ounces platinum,
 84,942 ounces palladium and 24,338
 ounces gold (Sudbury Operations Total
 Inferred – Dec 2014)
 2004
 208 workers (estimate)
 McCreedy ore is processed at Vale's
 Clarabelle Mill in Sudbury. Total precious
 metals production in H1-2020 was higher
 by 2.7 thousand troy ounces (+15%)
 due to the higher content of these
 minerals in extracted ore. In H1-2020,
 US\$3 million was spent on the Victoria
 project, including among others securing
 existing infrastructure and project
 terrain. Exploratory work was continued
 at Victoria project, aimed at increasing
 knowledge of the orebody.



MPX
 GEOPHYSICS LTD.



MPX provides **airborne geophysical surveys**
 via **fixed-wing** and **helicopter** platforms.

A variety of survey equipment, including **fixed-wing magnetics**
+ VLF, is available at MPX which can be **custom configured** to
 optimize your project needs.

Experienced professionals, **competitive pricing**, and **on-demand**
 service available. **Contact us today to learn more.**

(905) 947-1782 **info@mpxgeo.com** **www.mpxgeo.com**

Edenvale Aerodrome – Hanger B, 5195 Highway 26 E. RR# 2, Stayner ON

SUDBURY OPERATIONS – VALE

**Coleman Mine, Copper Cliff North Mine,
Creighton Mine, Garson Mine, Totten Mine
Vale S.A**

• nickel, copper, cobalt, platinum group metals, gold, silver,
sulphuric acid, liquid sulphur dioxide • underground

Mailing Address	18 Rink Street Copper Cliff, ON P0M 1N0 Tel: (705) 682-4211 Fax: (705) 682-5319
Website	www.vale.com
Production Rate	40,000 tonnes per day (Clarabelle Mill capacity)
Production	2017 – 61,900 tonnes nickel, 98,300 tonnes copper, 840 tonnes cobalt, 485,000 ounces of gold, 214,000 ounces of palladium, 144,000 ounces platinum, 0 ounces of silver 2018 – 50,600 tonnes nickel, 72,300 tonnes copper, 520 tonnes cobalt, 477,000 ounces of gold, 218,000 ounces of palladium, 135,000 ounces platinum, 0 ounces of silver 2019 – 50,800 tonnes nickel, 92,800 tonnes copper, 495 tonnes cobalt, 480,000 ounces of gold, 182,000 ounces of palladium, 148,000 ounces platinum, 0 ounces of silver 2020 – 54,105 tonnes nickel, 92,316 tonnes copper, 612 tonnes cobalt, 73,460 rhodium, 92,916 ounces of gold, 247,900 ounces of palladium, 176,592 ounces platinum, 1,093,049 ounces of silver (estimate) 2021 – 75,072 tonnes nickel, 114,478 tonnes copper, 612 tonnes cobalt, 7,870 rhodium, 92,916 ounces of gold, 282,500 ounces of palladium, 234,147 ounces platinum, 1,300,819 ounces of silver (estimate)
Resources	58,100,000 tonnes at 1.38% nickel, 1.75% copper, 0.04% cobalt, 1.26 g/t platinum, 1.52 g/t palladium, 0.47 g/t gold (Measured and Indicated – Dec 2019)
Employment	Nearly 4,000 (Vale Sudbury Operations total workforce)
Notes	Vale Ontario Operations include five active mines, the Clarabelle Mill, the Copper Cliff Smelter and Copper Cliff Nickel refinery as well as a cobalt refinery in Port Colborne. In July 2020, Vale took the Superstack off line as it transitioned to a new system. Work at Vale's \$750 million Copper Cliff Deep mine expansion is expected to be completed by 2021. Vale is currently conducting a feasibility study for a phase 2 expansion of Copper Cliff Deep that would incorporate additional deposits from the Kelly Lake area into the mine.

COLEMAN MINE

Mine Manager	Brent Salem
Production Rate	1,102,000 tonnes per year
Opened	1992

COPPER CLIFF NORTH MINE

Mine Manager	Colin Pegues
Production Rate	644,000 tonnes per year
Opened	1886

CREIGHTON MINE

Mine Manager	John Ryan
Production Rate	613,000 tonnes per year
Opened	1902

GARSON MINE

Mine Manager	Rick Filion
Production Rate	641,000 tonnes per year
Opened	1907–1986; 1994 (reopened)

TOTTEN MINE

Mine Manager	Stephanie Bleker
Production Rate	669,000 tonnes per year
Opened	2014

SUDBURY OPERATIONS – GLENCORE

**Fraser Mine, Nickel Rim South Mine
Glencore PLC**

• nickel, copper, cobalt, platinum group metals,
sulphuric acid • underground

Mailing Address	6 Edison Road Falconbridge, ON P0M 1S0 Tel: (705) 693-2761 Fax: (705) 966-6530
Website	www.glencore.com, www.glencore.ca
Production Rate	6,670 tonnes per day
Production	2017 – 22,928 tonnes nickel, 40,427 tonnes copper, 480 tonnes cobalt 2018 – 22,806 tonnes nickel, 38,831 tonnes copper, 477 tonnes cobalt 2019 – 22,806 tonnes nickel, 38,831 tonnes copper, 477 tonnes cobalt 2020 – 26,640 tonnes nickel, 31,450 tonnes copper, 418 tonnes cobalt (estimate) 2021 – 29,032 tonnes nickel, 28,263 tonnes copper, 418 tonnes cobalt (estimate)
Resources	26,300,000 tonnes at 2.09% nickel, 2.33% copper, 0.05% cobalt, 1.04 g/t palladium, 0.85 g/t platinum (Measured and Indicated – Dec 2020) 34,000,000 tonnes at 0.90% nickel, 2.20% copper, 0.02% cobalt, 1.00 g/t palladium, 0.80 g/t platinum (Inferred – Dec 2020)
Employment	1,300 employees, 500 contractors (approximate)
Notes	Glencore's Sudbury Integrated Nickel Operations consist of the Nickel Rim South and Fraser underground mines, the Strathcona Mill and the Falconbridge Smelter. Glencore's matte production from the Falconbridge Smelter is shipped to the company's Nikkelverk refinery in Norway for refining. The Nickel Rim

South Mine is currently Sudbury's largest mining operation, producing approximately 14,000 tonnes of nickel a year. Glencore continued to advance the Onaping Depth Project in 2020. The deposit extends to a depth of 2,600 metres and will be Glencore's deepest mine. First ore production is expected in 2023 and full production is expected in 2025. The mine life at Glencore's Sudbury Integrated Nickel Operations currently extends through 2034.

FRASER MINE

Manager Gary Potts, Mine Director
 Production Rate 717,979 tonnes per year
 Opened 1968

NICKEL RIM SOUTH MINE

Manager Christian Bruneau, Director
 Production Rate 1,268,740 tonnes per year
 Opened 2010

TOMCLID IRON MINE

Ferromin Inc.

• iron as magnetite • quarry

Mailing Address 158 Don Hillock Drive, Unit 13
 Aurora, ON L4G 0H6
 Tel: (905) 727-7100
 Fax: (905) 727-0060

Website www.ferromininc.com

Production 2017 – 15,000 tonnes of ore (approximate)
 2018 – 0 tonnes of ore
 2019 – Not available
 2020 – Not available
 2021 – Not available

Resources 3 million tonnes averaging 40% Fe (1993); reserves estimate has not been adjusted to reflect production from the deposit

Opened 1997 (reopened on an "as-needed basis")

Notes Production was restarted in late 1997 by Tomclid Iron Mines Ltd. and operations have continued on an as-needed basis by Ferromin Inc. Magnetite is mined and crushed as high-density aggregate for use in heavy concrete applications including radiation shielding.



CUSTOM HELI

Serving the mining industry for over 40 years.

1-204-338-7953
 info@customheli.com
 www.customheli.com



WE'RE MORE THAN JUST RIGGING AND WIRE ROPE

PILOT DIAMOND TOOLS

IMBI

flagro INDUSTRIES LIMITED

Green Line HOSE & FITTINGS

SLING-CHOKER MANUFACTURING

slingchoker.com

A T O M BITS CANADA
 www.atombits.ca

MAJOR INDUSTRIAL MINERAL PRODUCERS

Blue Mountain Operations

Covia Holdings Corp.

- nepheline syenite
- open pit (Mining Act)

Location Methuen Township

Address P.O. Box 2000
Havelock, ON K0L 1Z0

Contact Alex Vanags, P.Eng., Plant Manager
(705) 877-2500 ext. 645

Employees 230

Goderich Evaporator Plant

Compass Minerals Canada Corp.

- salt in brine (Oil, Gas and Salt Resources Act)

Location Goderich Township

Address Evaporation Plant
245 Regent Street, PO Box 100
Goderich, ON N7A 3Y5

Contact (519) 524-8338

Employees 90

Goderich Salt Mine

Compass Minerals Canada Corp.

- rock salt
- underground (Mining Act)

Location Goderich Township

Address 300 North Harbour Road, PO Box 370
Goderich, ON N7A 3Y9

Contact (519) 524-8351

Employees 450

Hagersville Mine

CGC Inc.

- gypsum
- underground (Mining Act)

Location Oneida Township

Address PO Box 99
Hagersville, ON N0A 1H0

Contact (905) 768-3331

Employees 40

Ojibway Mine

K+S Windsor Salt Ltd.

- rock salt
- underground (Mining Act)

Location Windsor - Sandwich Township

Address 200 Morton Drive, PO Box 7008
Windsor, ON N9J 3W9

Contact (519) 966-2142

Employees 230

Penhorwood Mine

IMERYS Talc

- talc
- open pit (Mining Act)
- primary plant
- micronising plant

Location Quarry and primary processing plant -
Penhorwood Township
Micronising Plant - Timmins

Address 100 Water Tower Road, PO Box 1245
Timmins, ON P4N 7J5

Contact (705) 268-2208

Employees 65 (130 at peak)

St. Lawrence Mine

Canadian Wollastonite

- wollastonite
- open pit (Mining Act)
- diopside
- granite aggregate

Location Seeleys Bay (Kingston)

Address 6675 Highway 15
Seeleys Bay, ON K0H 2N0

Contact Bob Vasily (613) 387-2734 x101;
Bob.Vasily@canadianwollastonite.com
(613) 387-2734

Employees Summer - 16, Winter - 2

Tatlock Quarry

OMYA (Canada) Inc.

- calcium carbonate
- open pit (Aggregate Resources Act)

Location Tatlock Quarry - (Darling Township)
Plant - Perth

Address PO Box 245
Perth, ON K7H 3E4

Contact (613) 267-5367

Employees 400

Windsor Evaporation Facility

K+S Windsor Salt Ltd.

- salt in brine (Oil, Gas and Salt Resources Act)

Location Windsor - Sandwich Township

Address Evaporation Plant
30 Prospect Avenue, PO Box 7008
Windsor, ON N9C 3G3

Contact (519) 255-5404

Employees 92

OTHER INDUSTRIAL MINERAL PRODUCERS

North Williams Mine

Marfred Minerals Ltd.

- barite
- underground ramp (Mining Act)

Location North Williams Township

Address 158 Burnside Drive
Kirkland Lake, ON P2N 1M7

Contact (705) 567-4125

Employees seasonal

Spanish River Carbonatite

Boreal Agrominerals Inc.

- carbonatite, vermiculite
- open pit (Aggregate Resources Act)

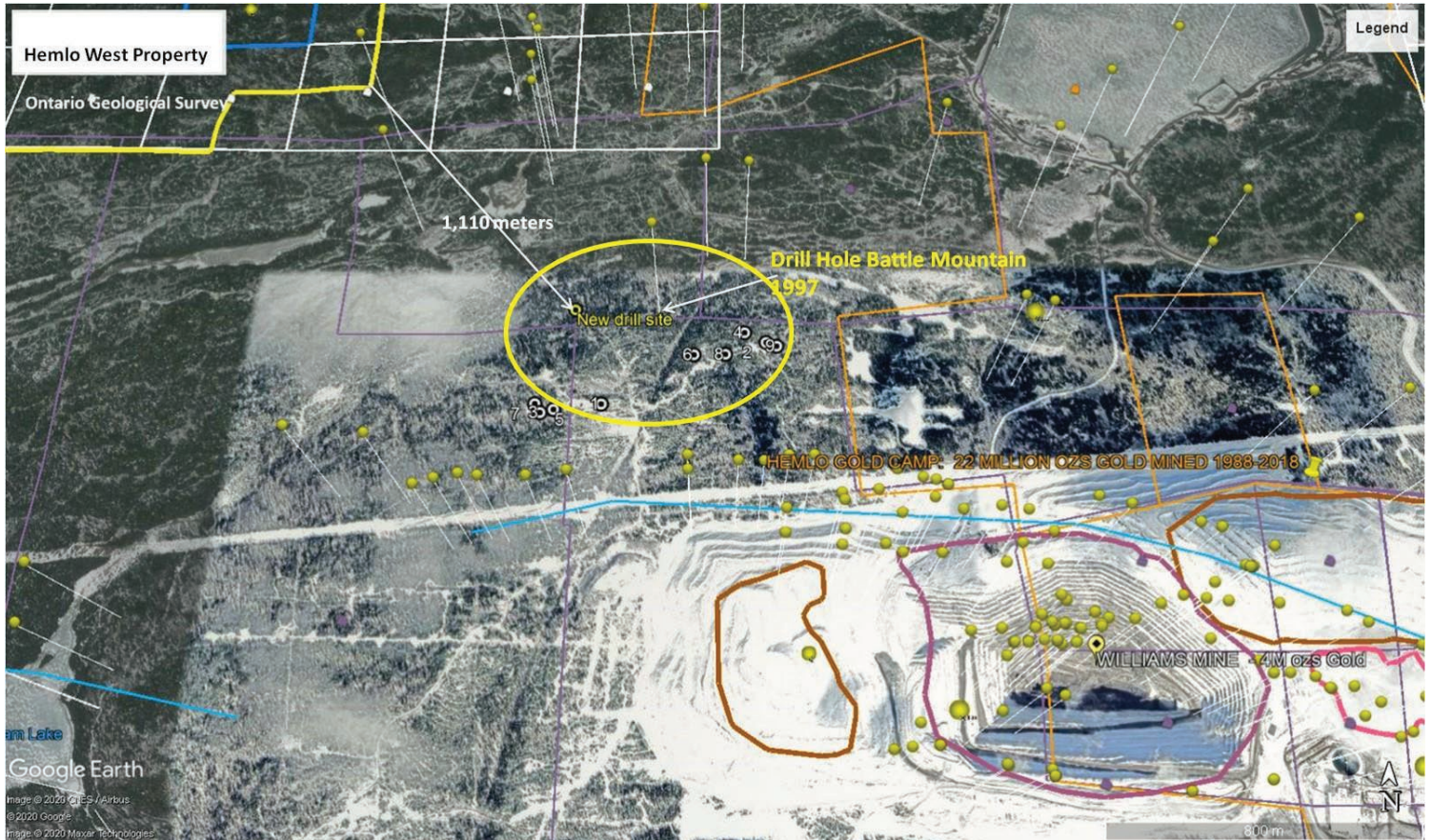
Location Venturi Township

Address 57 Mill Streey North, Suite 206
Brampton, ON L6X 1S9

Contact (905) 456-5436

Website www.borealagrominerals.ca

Employees 15



Tashota Resources Inc. (“TRI”) and Trojan Gold Inc. (“TGI”) are Prospect Generator junior exploration companies, led by a talented team of professionals having significant exploration, engineering, project financing and permitting experience. Under their guidance, TRI and TGI have accumulated sizeable land positions in Ontario and Quebec that represent significant mineral exploration potential.

Investment Highlights

- Well-located, sizeable properties acquired based on geological merit in areas that are now seeing significant exploration activity.
- Focused spending: gaining critical mass at core projects to move from projector generator model to high growth exploration company.

- Barrick has been drilling 1,100 metres away and in the direction of TRI’s Hemlo West with “encouraging” results. Hemlo South (a TGI/TRI joint venture property) is just 1,200 metres south of Barrick’s open pit mine.
- The Larose property in the Shebandowan Gold Camp has the potential to be a sizeable bulk tonnage prospect with a gold-bearing shear zone traced for 9 km.
- Sirois’ Cheechoo discovery has reinvigorated the Opinaca camp. Modest program on TRI’s ground warranted to de-risk and maintain optionality.
- In Beardmore-Geraldton, TRI has a current NI 43-101 deposit containing 260,000 tons @ .241 oz. Au. / ton (68,900 ounces), among other historical assets.

Tashota Resources Inc.
www.tashotaresources.com

Trojan Gold Inc.
www.trojangold.com

82 Richmond St. East, Suite 401
Toronto, ON M5C 1P1

C: 416-315-6490

O: 647-350-6122

E: elbourne007@gmail.com

For further information, contact:
Charles J. Elbourne, President & CEO
416-315-6490

This is not a general solicitation; any investment is only open to accredited or other eligible investors.

HEMLO - IN THE SHADOW OF THE HEAD FRAME

TASHOTA RESOURCES INC.

There is an axiom in mining exploration that the best properties are those that are 'in the shadow of the headframe'. This is literally true, because if a mineral-bearing structure is large and extensive enough to justify the underground development upon which a headframe sits, it is continuous onto adjacent properties. Thus, the deposit-relevant geoscientific information is available to use in mineral exploration.

HEMLO GOLD CAMP

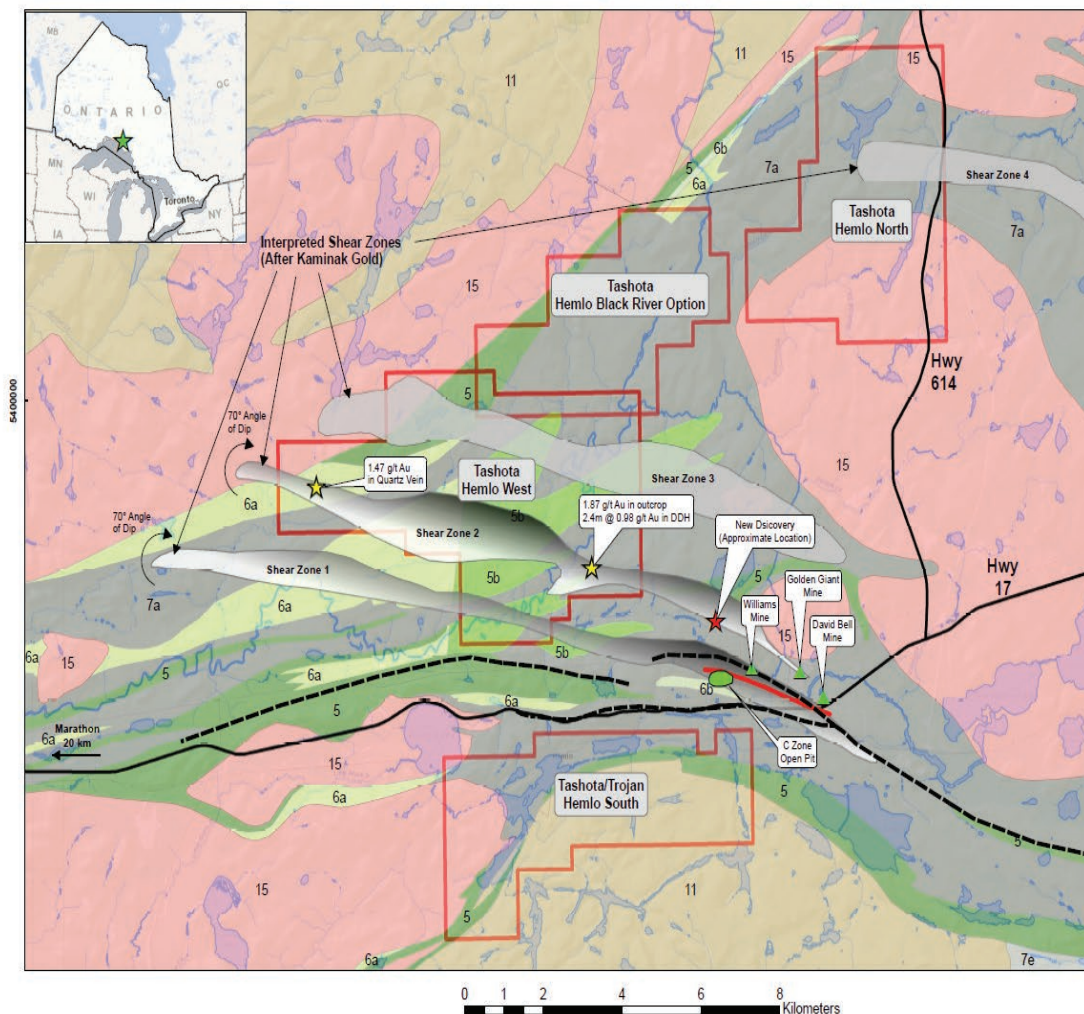
And so it is with the Company's property portfolio. In the current and past-producing Hemlo gold camp (approximately 21 million oz. Au), near Marathon, Ontario, Tashota is exploring four properties. Hemlo South adjoins the patented gold concessions held by Barrick Gold Corp, the operator of the Hemlo Mine. Hemlo South covers some 18.9 sq. km and is about 1.5 km south of the main pit. Access to Hemlo South is excellent, as the Trans-Canada Highway passes through it.

The graphic below outlines Hemlo West and Hemlo South in relation to Barrick's Hemlo operations. In this graphic, the perspective direction is from the west looking east.

Perhaps the flagship discovery property is Tashota's Hemlo West property (38 square km), followed by the Hemlo North property (18 square km), with an honorable mention to the Black Hawk and Hemlo South optioned property. Past exploration works in the area have outlined parallel shear zones which cross the Hemlo West property; these are always good targets for mineralization with some degree of structural control. These shear zones are cut by a major fault which was discovered in geophysical surveys from 2015-2016, also on the Hemlo West Property. These same structures appear to coincide with the location of potentially high-grade gold mineralization that Barrick Gold Corp is drilling less than 1.2 km from the Hemlo West Property.



The Tashota Group: Hemlo Gold Properties



SATELLITE IMAGERY OF TASHOTA'S HEMLO PROPERTIES

One of the most astute players in Ontario geology and mine-based exploration is Tashota Director, Dr. Rudy Wahl, who won the prestigious Bill Dennis Award at the Prospectors and Developers Convention in 2020. In May 2019, Dr. Wahl contracted Toronto, Ontario based Aster Funds Ltd. to conduct a satellite-sourced long wave spectral analysis survey over Tashota Resources' Hemlo properties.

The survey picked up 16 specific minerals including orthoclase, calcite, quartz, olivine and alunite. All five of these elements can be tied specifically to mineralization styles at the Hemlo Gold Camp and when combined, the exploration target areas cover over 90% of the Hemlo North and West properties and approximately 55% of the Hemlo South property. Moreover, when they plot together on surface with the shear zones and cross faults, actual discovery might not be too far away.

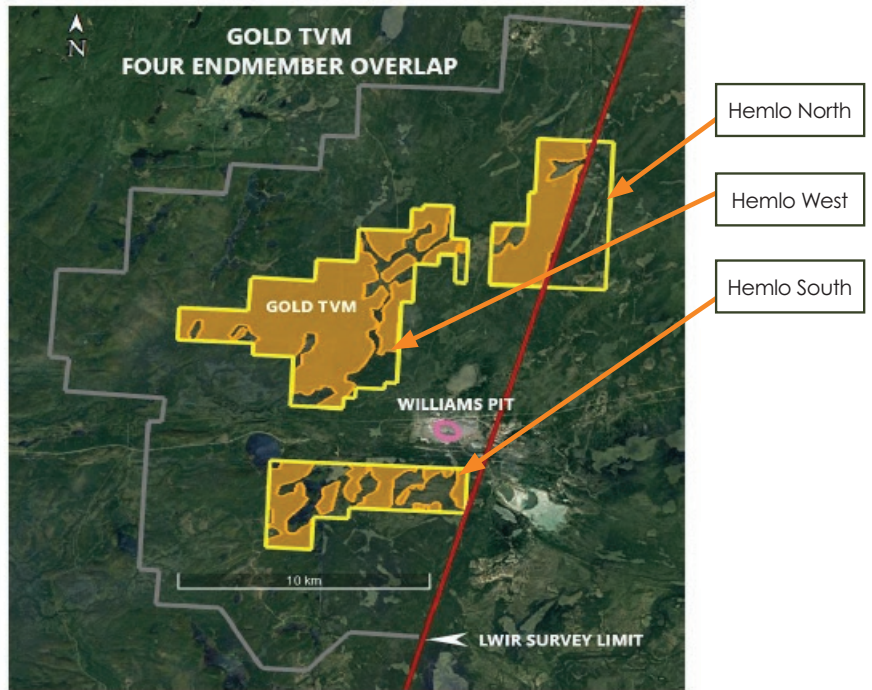


Figure 7.1 Gold TVM Distribution

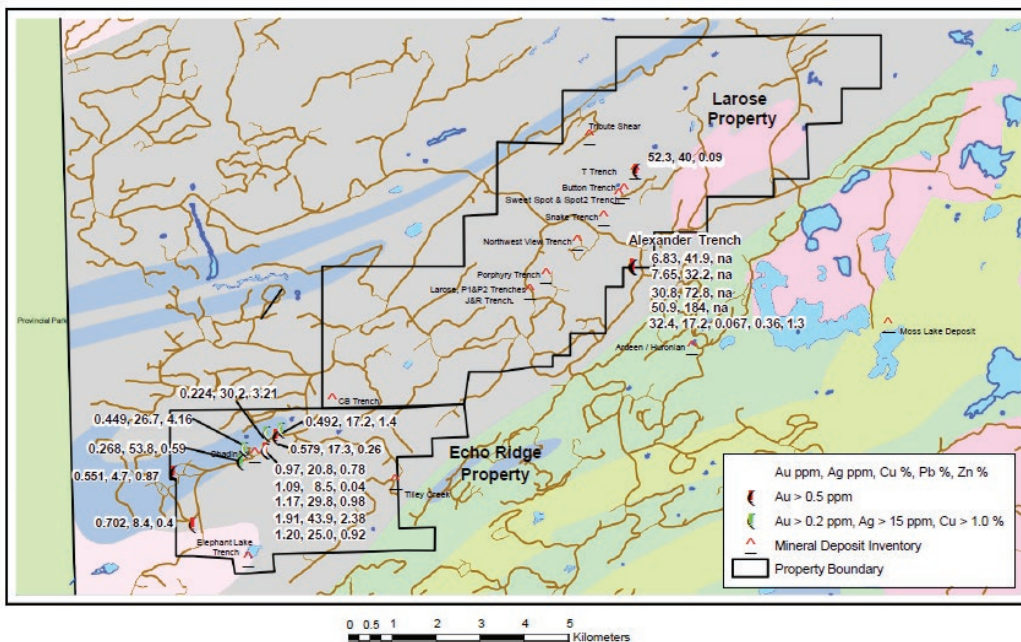
Exploration to be conducted in the summer of 2021 should generate compelling results in the search for the next Hemlo gold strike.

SHEBANDOWAN GOLD CAMP

Tashota Resources Inc. also holds a commanding land position in the Shebandowan Greenstone Belt. The company's land covers the Larose Shear Zone, adjacent to the Huronian Mine, owned by Kesselrun Resources Ltd. The 12,000 acre Larose property has excellent upside potential based on past and recent exploration and drilling. The Larose property is also just west of Goldshore Resources Inc.'s Moss Lake property. Kesselrun's property has a historic resource of 525,000 oz. Au. and that company recently announced that it is commencing a 20,000-metre drill program. Goldshore Resources recently acquired its Moss Lake property from Wesdome Gold Mines Ltd. in a \$57 million transaction.

With respect to the Larose property itself, a Ministry of Northern Development and Mines report indicates sample results up to 5.058 oz/ton Au on the property and it has the potential to be a sizeable bulk tonnage prospect with a gold-bearing shear zone traced for 9 km. Drill results on the Larose and Echo Ridge property (held by a related company) are shown on the map below.

2017 October Highlights - Tashota Resources Inc. - Larose / Echo Ridge Properties



BOTTOM LINE

Tashota Resources has serious upside exploration potential with its large and well-positioned properties in Ontario and Quebec. Indeed, this is no doubt why the well-regarded industry investor, Crescat Capital, of Denver, Colorado recently invested \$1.1 million into Tashota. The expectation is that 2021 could be the discovery year.

GEMSTONE AND MINERAL SPECIMEN MINES AND QUARRIES

Producers:	Products:	General Information:
<p>Amethyst Mine Panorama Precious Purple Gemstones/ Amethyst Gift Centre Tim Lukinuk 500 Bass Lake Road Shuniah, ON (807) 622-6908 info@amethystmine.com www.amethystmine.com</p>	<ul style="list-style-type: none"> • specimens • decorative stone • landscaping stone • slabbing & tumbling stone • jewelry, giftware, carvings • faceted gem stones 	<p>McTavish Twp. Tourist Attraction</p> <ul style="list-style-type: none"> • pick-your-own-site • mine tours
<p>AquaRose Gems and Minerals Beryl Pit/Rose Quartz Pit Dave Paterson 1327 Lower Craigmont Road, RR 2 Combermere, ON K0J 1L0 (613) 756-1361 berylpit@nexicom.net</p>	<ul style="list-style-type: none"> • mineral specimens • decorative stone • landscaping stone • slabbing & tumbling stone • quartz, feldspar, 35 accessory minerals in a complex pegmatite 	<p>Lyndoch Twp. Tourist Attraction</p> <ul style="list-style-type: none"> • fee for collecting site • mine tours
<p>Assiniboia Amethyst Mine Paul and Thelma Smitham Wawa, ON www.assiniboiaamethystmine.weebly.com</p>	<ul style="list-style-type: none"> • mineral specimens 	<p>McTavish Twp.</p>
<p>Auralite 23 Mine (Amethyst) Howard Pilsmaker Thunder Bay, ON (807) 629-4300 Auralite@hotmail.com www.auralite23canada.com</p>	<ul style="list-style-type: none"> • mineral specimens • polished and tumbled stone • jewelry • tiles and countertop stone 	<p>Tartan Lake Area Tourist Attraction</p> <ul style="list-style-type: none"> • guided tours available
<p>Blue Points Amethyst Mine Lyndon Swanson 5 Road North Pearl, ON P0T 2M0 (218) 409-1584 (winter) (807) 629-1127 (summer) lynswan1@lakenet.com</p>	<ul style="list-style-type: none"> • specimens • decorative stone • aquarium stone 	<p>McTavish Twp. Tourist Attraction</p> <ul style="list-style-type: none"> • pick-your-own-site

Producers:	Products:	General Information:
<p>Boulder Creek Amethyst Quarry Chuck Anderson 27 Third Street Nipigon, ON P0T 2J0 (807) 887-2615 bouldercreek@shaw.ca www.mininglifeonline.net</p>	<ul style="list-style-type: none"> • specimens • giftware 	<p>McTavish Twp.</p>
<p>Diamond Willow Amethyst Mine Brandon Leroux and Carol Fayle 5 Road North Pearl, ON P0T 2M0 (807) 627-5515 diamondwillowamethyst@hotmail.com www.diamondwillowamethyst.com</p>	<ul style="list-style-type: none"> • specimens • decorative stone • landscaping stone • slabs • tumbling stone • jewelry 	<p>McTavish Twp. Tourist Attraction • pick-your-own-site • mine tours</p>
<p>Princess Sodalite Mine Andy Christie Rock Shop and Rock Farm 31241 Highway 28 East Bancroft, ON K0L 1C0 (613) 332-8274 Andy@PrincessSodaliteMine.ca www.princesssodalitemine.ca</p>	<ul style="list-style-type: none"> • specimens • decorative stone • landscaping stone • giftware • jewelry 	<p>Bancroft Tourist Attraction • pick-your-own-site</p>
<p>Purple Haze Mine (Amethyst) Michael & Sandra Grieve 22 Knight Street Thunder Bay, ON P7A 5M2 (807) 345-6444 www.purplehazeamethyst.com</p>	<ul style="list-style-type: none"> • specimens • giftware • jewelry • landscaping stone • decorative stone 	<p>Tartan Lake Area</p>
<p>Windy Ridge Amethyst Quarry Larry Kowtuski 71 Stover Street South Norwich, ON N0J 1P0 (519) 468-3090 windyridge@live.ca www.windyridgeamethyst.ca</p>	<ul style="list-style-type: none"> • specimens • giftware • garden rock 	<p>McTavish Township</p>

LIME AND SPECIALTY LIMESTONE PRODUCERS

Beachville Facility

Carmeuse Americas

- limestone: agricultural lime, crushed
- high calcium lime
- hydrator

Location Zorra Township
Address 374681, Oxford County Road 6
Ingersoll, ON N5C 3J5
Contact (519) 423-6283
Employees 175
Website www.carmeusebeachville.com

Blair Quarry

A.L. Blair Construction Ltd.

- limestone: agricultural lime, crushed

Location Finch Township
Address 7 Labrosse Street, PO Box 220
Moose Creek, ON K0C 1W0
Contact (613) 538-2271 (Head Office)
Website www.alblairconstruction.com
Employees 10

Bucke Quarry

Miller Minerals (Division of Miller Paving Co.)

- limestone: crushed, agricultural lime

Location Bucke Township
Address PO Box 248
New Liskeard, ON P0J 1P0
Contact (705) 672-2282
minerals@millergroup.ca
Employees 4

Dundas Operations

Carmeuse Lime (Canada) Ltd.

- dolomitic lime

Location Town of Flamborough
West Flamborough Township
Address 600 Highway 5, Gate 1 Building 13,
PO Box 2029
Dundas, ON L9H 5E2
Contact (905) 628-8800
Employees 53

Dundas Quarry

Lafarge Canada Inc.

- dolostone: crushed
- metallurgical grade limestone

Location Town of Flamborough
West Flamborough Township
Address 628 Highway 5
Dundas, ON L9H 5E2
Contact (905) 527-3671
Employees 85

Meldrum Bay Quarry

Lafarge Canada Inc.

- dolostone: crushed
- metallurgical and chemical stone, aggregate

Location Dawson Township, Manitoulin Island
Address 95 Mississagi Lighthouse Road,
PO Box 6
Meldrum Bay, ON P0R 1R0
Contact (705) 283-3011
Website www.lafarge.ca
Employees N/A

Northern Operation

Carmeuse Lime (Canada) Ltd.

- high calcium lime (limestone quarried in Michigan, plant in Blind River)

Location Blind River
Address Highway 17 East, PO Box 1690
Blind River, ON P0R 1B0
Contact (705) 849-2201
Website www.carmeuse.com
Employees 26

Sydenham Quarry

E.C. King Contracting Division of Miller Paving

- dolostone: crushed
- dolomitic lime

Location Sydenham Township
Address 2125 20th Avenue East, PO Box 457
Owen Sound, ON N4K 5P7
Contact (519) 376-6140
Employees N/A

TRAP ROCK PRODUCERS 2021

Armstrong Quarry

AECON Mining Inc.

- basalt
- diabase

Location Armstrong, Ontario
Address Fudge & Associates
160 Bryan Road
North Bay, ON P1C 1C2
Contact (705) 472-3053

Bridgewater Trap Rock Mine

Danford Granite Ltd.

- gabbro
- mineral wool raw material, high performance aggregate, railway ballast, filter stone

Location Elzevir Township (northeast of Madoc)
Address PO Box 749
Madoc, ON K0K 2K0
Contact (613) 473-2468
info@danfordconstructionltd.com
Website www.danfordconstructionltd.com

Havelock Quarry

Drain Bros. Excavating Ltd.

- basalt
- rail ballast, rock wool, high quality asphalt

Location Belmont Township (east of Havelock)
Mailing Address 2130 8th Line Road North
Douro-Dummer, ON K0L 2H0
Main Office Asphodel 11th Line 25
Norwood, ON K0L 2V0
Contact (705) 639-2301 / 1-877-639-2301
info@drainbros.ca

Hillsport Quarry

AECON Mining Inc.

- diabase
- mineral wool raw material, high performance aggregate, railway ballast, filter stone

Location Hillsport, Ontario
Address Fudge & Associates
160 Bryan Road
North Bay, ON P1C 1C2
Contact (705) 472 3053

I.K.O. Quarry

I.K.O. Industries Ltd.

- andesite
- roofing granules, HL-1 aggregate

Location Madoc Township
Address 105084 Highway 7, PO Box 839
Madoc, ON K0K 2K0
Contact (613) 473-0430

Iroquois Falls Quarry

AECON Mining Inc.

- basalt
- gabbro
- diabase

Location Iroquois Falls, Ontario
Address Fudge & Associates
160 Bryan Road
North Bay, ON P1C 1C2
Contact (705) 472-3053

MRT Traprock

MRT Aggregates Inc.

- gabbro
- HL-1, DFC, OFC, SMA, FC-1, FC-2
- railway ballast

Location Methuen Township
Address 4999 County Road 46
Havelock, ON K0L 1Z0
Contact (705) 877-8423

Ontario Trap Rock Quarry

Ontario Trap Rock Ltd. – Tomlinson Group

- diabase
- mineral wool raw material, high performance aggregate, railway ballast, filter stone

Location Bruce Mines
Address 9630 King's Highway 17 East
Bruce Mines, ON P0R 1C0
Contact (705) 785-3833
Website www.tomlinsongroup.com

Smelter Bay Aggregates Quarry

Smelter Bay Aggregates

- diabase
- construction aggregate, abrasives, concrete sand

Location Nestorville (5 km west of Thessalon)
Address Boundary Road Industrial Park
PO Box 400
Thessalon, ON P0R 1L0
Contact (705) 842-2597

BRICK PRODUCERS

Brampton Brick Ltd.

• shale • clay brick

Address 225 Wanless Drive
Brampton, ON L7A 1E9
Contact (905) 840-1011
www.bramptonbrick.com

CHELTENHAM QUARRY

Location Brampton, Chinguacousy Township

HUNGRY HOLLOW QUARRY (INACTIVE)

Location Lambton Shores, West Williams Township

Jazbrick Group (formerly Century Brick)

• shale • clay brick

Address 22 Airport Road
Brantford, ON N3T 5R7
Contact (416) 741-4498 / 1-888-772-8099
info@jazbrick.com
www.jazbrick.com

GEORGETOWN QUARRY

Location Esquesing Township

Meridian Brick Ltd.

(formerly Forterra Brick, Hanson Brick)

• shale • clay brick

Address 5155 Dundas Street West
Burlington, ON L7R 3Y2
Contact (905) 335-3401 / 1-800-263-6229

ALDERSHOT QUARRY

Location City of Burlington,
East Flamborough Township

BURLINGTON QUARRY

Location City of Burlington, Nelson Township
Employees 150-175

CEMENT PRODUCERS' QUARRIES

Bath Quarry

Lafarge Canada Inc.

• limestone
• cement

Location Ernestown Township
Address Highway 33, PO Box 160
Bath, ON K0H 1G0
Contact (613) 352-7711
Employees 110 at the plant and 10 at the quarry

Bowmanville Quarry

St. Marys Cement Inc.

• limestone
• cement

Location Darlington Township
Address 400 Waverley Road South
Bowmanville, ON L1C 3K3
Contact (905) 623-3341
Employees 117 at the plant and 18 at the quarry

Ogden Point Quarry

CRH Canada Group Inc.

• limestone
• cement

Location Cramahe Township (quarry); Plant in
Mississauga
Address 176 Victoria Beach Boulevard, PO Box 160
Colborne, ON K0K 1S0
Contact (905) 355-2534
Employees 160 at the plant and 21 at the quarry

Picton Quarry

Lehigh Cement (Heidelberg Cement Group)

• limestone
• cement

Location Sophiasburg Township
Address 1370 Highway 49 South
Picton, ON K0K 2T0
Contact 1-800-437-7762
Employees 136

St. Marys Quarry

St. Marys Cement Inc.

• limestone
• cement

Location Blanshard Township
Address 585 Water Street South, PO Box 1000
St. Marys, ON N4X 1B6
Contact (519) 284-1020
Employees 115-120 at the plant and 8 at the quarry

Federal White Cement

• cement (they purchase limestone from Lafarge's
Carmeuse quarry)

Address PO Box 1609
Woodstock, ON N4S 0A8
Contact (519) 485-5410
Employees 50-60

DIMENSION STONE AND SPECIALTY AGGREGATE PRODUCERS

A and A Natural Stone Ltd.

Address Concession 17 Keppel Township, RR 1
PO Box 967, ON N0H 2T0
Contact Dawn Forbes, Manager
Tel: (519) 534-5966, (519) 534-5540
Fax: (519) 534-2435
Quarries Keppel Township (Owen Sound)

Algonquin Stone

Address 1389 Port Cunnington Road
Dwight, ON P0A 1H0
Contact Terry or Susan Boothby
Tel: (705) 635-2613
Fax: (705) 635-2613
Quarries Franklin Township (Huntsville)

Elite Black Granite Quarry Ltd.

Address PO Box 5275
Huntsville, ON P1H 2K6
Contact Jim Alexander
Tel: (705) 224-8699, (705) 641-1455
jalexander@vianet.ca
Quarries 61 Lucky Road, Utterson ON

Allstone Quarry Products Inc.

Address 16105 Highway 27
Schomberg, ON L0G 1T0
Contact Peter Melo
Tel: (905) 939-8491, (800) 263-1270
Fax: (905) 939-2797
info@allstonequarry.com
Website www.allstonequarry.com
Quarries Bigwood Township (near Sudbury)

Aqua Rose Gems and Minerals

Address 1327 Lower Craigmont Road, RR 2
Combermere, ON K0J 1L0
Contact Dave Paterson
Tel: (613) 756-1361
berylpit@nexicom.net
Quarries Lyndoch Township (near Bancroft)

Arriscraft International Inc.

Address 875 Speedsville Road, PO Box 3190
Cambridge, ON N3H 4S8
Contact Joe Ippolito
Tel: (519) 653-3275, (800) 265-8123
Fax: (519) 653-1337
solutions@arriscraft.com
Website www.arriscraft.com
Quarries Albemarle Township (near Owen Sound)

Attia Quarries

Address 6 Satchell Boulevard
Toronto, ON M1C 3B4
Contact Eid Attia
Tel: (416) 286-7233, (705) 325-5068,
(416) 453-2978
Fax: (416) 286-5693
eattia@sympatico.ca
Website www.attiaquarry.com
Quarries 6414 County Road 169, Rama Township

Birkendale Natural Stone

Address 144 Stephenson Road 8 East
Huntsville, ON P0B 1M0
Contact Mimi Lawrenson
Tel: (705) 385-8000
Fax: (705) 385-3260
Info@ontariostonedepot.com
Website www.ontariostonedepot.com
Quarries Franklin Township (near Huntsville)

Block and Stone Resource Group Inc.

Address 370 2nd Avenue South East
Owen Sound, ON N4K 5T1
Contact Andrew Negus or Ben Snyder
Tel: (519) 416-7625, (855) 416-7626
Fax: (519) 416-7626
info@bsrg.ca
Website www.bsrg.ca
Quarries Amabel Township (near Wiarton)

Boothby Quarry

Address 4 Seabreeze Road, PO Box 96
Dwight, ON P0A 1H0
Contact Dan Boothby, Owner
Tel: (705) 635-1774, (705) 783-2277
Fax: (705) 754-2440
danboothby@gmail.com
Website www.danboothby.ca
Quarries Finlayson Township (near Parry Sound)

Bot Aggregates Ltd.

Address 6791 Concession Road B-C
Ramara, ON L0K 1B0
Mailing address 1224 Speers Road
Oakville, ON L6L 2X4
Contact Tel: 1-877-898-2668
Fax: 1-866-268-4177
generalinquiry@botconstruction.ca
Website www.botconstruction.ca
Quarries Sebright (near Orillia)



Drilling Solutions

for a Better Future

Surface

- Core Drilling
- Heli-portable
- Reverse Circulation
- Directional
- Rotary
- Sonic
- Energy
- Dewatering
- Water Wells
- Drill & Blast



Underground

- Core Drilling
- Percussive & Rotary
- Directional
- Reverse Circulation
- Dewatering
- Mining Services



QUALITY • SAFETY • RESULTS

www.majordrilling.com

Brent Quarries

Address 3841 Highway 118 West
Port Carling, ON P0B 1J0

Contact Ron Brent
Tel : (705) 765-6447, (866) 478-2779
Fax: (705) 765-5373
inquiry@brentquarry.com

Website www.brentquarry.com

Quarries Medora, Humphrey and Watt townships (near Parry Sound)

Bruce Peninsula Stone Ltd.

Address 451 Mar Sideroad
South Bruce Peninsula, ON N0H 2T0

Contact Eric Shouldice, Manager
Tel: (519) 534-3991, (519) 935-3333
Fax: (519) 534-4191
office@brucepeninsulastoneltd.com

Website www.brucepeninsulastoneltd.com

Quarries Amabel Township, Albemarle Township, Lindsay Township (near Owen Sound)

Callander Industries Ltd.

Address PO Box 121
Callander, ON P0H 1H0

Contact Gary M. Mote
Tel: (705) 752-2396
Fax: (705) 752-5643
calind@sympatico.ca

Website www.callanderindustries.com

Quarries McAuslan Township, Jocko Township, Garrow Township (North Bay)

Canadian Colour Rock Inc.

Address 244 Copper Street, Suite 301
Sudbury, ON P3E 2C2

Contact H. Tsambis, Manager
Tel: (705) 690-0300
jtskakoon@gmail.com

Quarries Gordon Township, Robinson Township (Manitoulin Island), Aylmer Township (near Sudbury)

Colonial Brick and Stone Inc.

Address 5956 Perth Road 119
Brunner, ON N0K 1C0

Contact Elroy Wagler
Tel: (519) 595-4261
Fax: (519) 595-2399

Website www.colonialbrickandstone.com

Quarries Robinson Township (Manitoulin Island)

Coloured Aggregates Inc. (Ferromin Inc.)

Address 158 Don Hillock Drive, Unit 12
Aurora, ON L4G 0G9

Contact Jeff Oravec
Tel: (416) 491-0230 / 1-800-465-5066
Fax: (416) 494-1014
jeff@colouredaggregates.com

Website www.colouredaggregates.com

Quarries Canonto Township magnetite (near Kingston), Ashby Township marble, Marmora mill, Ratter Township Pink Feldspar, Dana and Henry Township Black Granite (Anorthosite), Henry Township Salt and Pepper Granite.

Credit Valley Quarries Co. Ltd.

Address 14550 Heritage Road
Caledon, ON L7C 1P5

Contact Tel: (905) 877-3686
Fax: (905) 877-3686
stone@creditvalleyquarries.com

Website www.creditvalleyquarries.com

Quarries Chingacousy Township (near Caledon)

Cushman Stone and Gravel

Address 166 Savage Settlement Road, PO Box 161
Novar, ON P0A 1R0

Contact Jim Cushman, Owner
Tel: (705) 789-7830
Fax: (705) 789-7830

Quarries Perry Township (near Huntsville)

Cut Above Natural Stone

Address 7172 Concession B-C,
Ramara, ON L3V 0K7

Contact Scott Gareau, Owner
Tel: (705) 327-1158, (888) 557-7625
Fax: (888) 349-7625
info@cutabovenaturalstone.com

Website www.cutabovenaturalstone.com

Quarries Rama Township (near Orillia)

Dufferin Aggregates

Address 2300 Steeles Avenue West
Concord, ON L4K 5X6

Contact Jeff Benedict, Sales
Tel: (905) 761-7800
Fax: (905) 761-5905

Website www.dufferinconstruction.com

Quarries Flamborough, Acton, Buckhorn, Carden, Bark Lake, Milton, Coboconk

Ebel Quarries Inc.

Address 161 Old Oliphant Road, PO Box 69
Warton, ON N0H 2T0

Contact Mark Ebel, Vice President
Tel: (519) 534-0380, (877) 614-4406
Fax: (519) 534-0077
office@ebelquarries.com

Website www.ebelquarries.com

Quarries Amabel Township (near Owen Sound)

Fowler Construction Company Limited

Address 1206 Rosewarne Drive, PO Box 630
Bracebridge, ON P1L 1T9

Contact Tel: (705) 645-2214, (800) 268-7687
Fax: (705) 645-5025
info@fowler.ca

Website www.fowler.ca

Quarries McDougall Township (near Parry Sound), Rama Township (near Orillia), MacAuley Township (near Bracebridge)

Fraser Quarry

Address PO Box 83
Dwight, ON P0A 1H0

Contact Mike Fraser, Owner
Tel: (705) 635-2111

Quarries Finlayson Township (near Huntsville)

Georgian Bay Marble and Stone Inc.

Address 3555 Bruce County Road 13
Warton, ON N0H 2T0

Contact Carl Anson Barfoot, Owner
Tel: (519) 534-3992
Fax: (519) 534-3586
georgianbaymarble@bellnet.ca

Website www.gbmstone.com

Quarries Amabel Township (near Owen Sound)

Harold Sutherland Construction (A Walker Company)

Address 323545 East Linton Side Road West, RR 2 Kemble, ON N0H 1S0
Contact Ryan Wall
 Tel: (519) 376-5698, (519) 796-7125
 Fax: (519) 371-6121
 info@hsc-ltd.com
Website www.hsc-ltd.com
Quarries Township of Georgian Bluffs (former Keppel Township), Municipality of Northern Bruce Peninsula (former Lindsay Township), Municipality of Meaford (former St. Vincent Township - near Meaford), Town of South Bruce Peninsula (former Albemarle Township - near Wiarton), Township of Georgian Bluffs (former Sarawak Township - near Owen Sound)

Hilltop Stone and Supply Inc.

Address PO Box 241
 Georgetown, ON L7G 4Y5
Contact J. Ferraro
 Tel: 416-571-8775, (905) 877-8587
 Fax: (905) 877-0138
 info@hilltopstone.ca
Website www.hilltopstone.ca
Quarries 11679 17th Sideroad, Halton Hills, Equesing Township (near Brampton)

Hope Bay Quarry Inc.

Address 1664 Bruce County Road 9,
 Wiarton, ON N0H 2T0
Contact Paul Bridge
 Tel: (519) 592-5115, (226) 668-8268, (519) 378-8766
 info@hopebayquarry.ca
Website www.hopebayquarry.ca
Quarries Albemarle Township (near Wiarton)

J.C.Rock Ltd.

Address 4337 Burnside Line, Unit 1
 Orillia, ON L3V 6H4
Contact Cynthia Lis
 Tel: (877) 326-4006, (705) 326-4000
 Fax: (705) 329-2473
 sales@jcrock.ca
Website www.jcrock.ca
Quarries Norland (north of Lindsay),
 Crookston (north of Belleville)

Jeff Parnell Contracting Ltd.

Address 1199 Connaught Drive,
 Ennismore, ON K0L 1T0
Contact Jennifer Van Dolder
 Tel: (705) 292-6587
 Fax: (705) 292-6587
 sales@jeffparnellcontracting.com
Website www.jeffparnellcontracting.com
Quarries Galway Township (near Peterborough)

John Bacher Construction Limited

Address 5054 Muskoka Road 117, PO Box 190
 Dorset, ON POA 1E0
Contact Eric Doig
 Tel: (705) 787-5038, (705) 766-0204
 Fax: (705) 766-1264
 kathleen@johnbacherconstruction.com
Website www.johnbacherconstruction.com
Quarries McClintock Township (near Huntsville)

Johnston Quarry

Address 1148 Blare Hampton Road,
 Minden, ON K0M 2K0
Contact Mervin Johnston
 Tel: (705) 489-2829
 Fax: (705) 489-2829
Quarries Galway Township (near Peterborough)

Keystone Granite

Address 2451 Highway 60, PO Box 5287
 Huntsville, ON P1H 2K6
Contact Blayne Hutchins
 Tel: (705) 783-6370
 Fax: (705) 788-2655
 joelayne@keystonegranite.ca
Website www.keystonegranite.ca
Quarries Lake of Bays Township (near Huntsville)

Limberlost Stone Inc.

Address 1692 Highway 6
 South Bruce Peninsula, ON N0H 2T0
Contact Gary Rea, Operations Manager
 Tel: (519) 793-3830
 info@limberloststone.com
Website www.limberloststone.com
Quarries Albemarle Township (South Bruce Peninsula)
Employees 35-50 dependent on the season

McFadyen's Stone Quarry

Address 1020 Old Highway, RR 4
 Huntsville, ON P1H 2J6
Contact Cindy McFadyen, Administrator
 Tel: (705) 635-2983
 Fax: (705) 635-9706
 mcfadyenstone@hotmail.com
Quarries Franklin Township (near Huntsville)



CHIBOUGAMAU DIAMOND DRILLING LTD.

FORAGES CHIBOUGAMAU LTÉE

More than 50 years of operation in the drilling industry

Plus de 50 ans de service dans l'industrie du forage

- ◆ Customized Rigs
- ◆ Nous fabriquons nos propres équipements de forage
- ◆ Specialized in deep drilling & helicopter jobs
- ◆ Spécialisé dans le forage de trous profonds et en forage hélicoptéré



New service
Nouveau service

BRANCHES:
 White River | Thunder Bay | Red Lake
 Chibougamau | Rouyn-Noranda

Charter flights
Vols Nolisés

527 route 167, C.P. 4, Chibougamau, QC, G8P 2K5

Tel: 418-748-3977 www.chibougamaudrilling.ca

Chibougamau.drilling@sympatico.ca

00699626

Mill Lake Stone Quarry Limited

Address Parton Road, RR 3, Compartment 4
Parry Sound, ON P2A 2W9
Contact Ted Hall
Tel: (705) 746-9882
ted@milllakestonequarry.com
Website www.milllakestonequarry.com
Quarries McDougall Township (near Parry Sound)

Miller Paving Ltd.

Address 356 Miller Road, PO Box 270
Brechin, ON L0K 1B0
Contact Rob Lindsay
Tel: (705) 484-1101 ext 31
rlindsay@millergroup.ca
Website www.millergroup.ca
Quarries Carden Township (Brechin Quarry)

Miron Topsoil Ltd.

Address Box 1377 (Quarry: 999932 Highway 11)
New Liskeard, ON P0J 1P0
Contact Edmond Miron
Tel: (705) 647-5823, (705) 563-2430 (quarry)
Fax: (705) 647-9322
info@mirontopsoil.com
Website www.mirontopsoil.com
Quarries Harley Township (Thornloe ON)

Nelson Granite Ltd.

Address PO Box 178
Vermilion Bay, ON P0V 2V0
Contact Craig Spence
Tel: (807) 227-2650
Fax: (807) 227-2722
craig.spence@nelsongranite.com
Website www.nelsongranite.com
Quarries Docker Township, Forgotten Lake Area, Wonderland Lake Area, Red Deer Lake Area (near Kenora)

Odawa Stone Ltd.

Address 1079A Sheshegwaning Road,
Sheshegwaning, ON P0P 1X0
Contact Dennis Blackburn
Tel: (705) 283-3292
Fax: (705) 283-3481
sales@odawastone.com
Quarries Robinson Township, Silver Water, Manitoulin Island (near Sheshegwaning)

OMYA (Canada) Inc.

Address 18595 Highway 7 West, PO Box 245
Perth, ON K7H 3E4
Contact Larry Sparks
Tel: (613) 267-5367
larry.sparks@omya.com
Website www.omya.com
Quarries Darling Township (near Perth)

Owen Sound Ledgerock Ltd.

Address 138436 Ledgerock Road, RR 5, PO Box 445
Owen Sound, ON N4K 5P7
Contact Tom Stobbe
Tel: (519) 376-0366
Fax: (519) 376-7078
info@ledgerock.com
Website www.ledgerock.com
Quarries Georgian Bluffs and South Bruce Peninsula (near Owen Sound)

Redstone Quarries

Address PO Box 424
Bobcaygeon, ON K0M 1A0
Contact Ted Sturman
Tel: (705) 738-4100
Fax: (705) 738-4100
ted@redstonequarries.ca
Website www.redstonequarries.ca
Quarries Trent Lakes (near Peterborough)

Rice and McHarg Limited.

Address 40 Cleaveholm Drive,
Georgetown ON L7G 3E1
Contact Joe Rice or Ivan Rice, Owners
Tel: Joe (905) 877-6374, Ivan (905) 866-3477
jrice15@cogeco.ca
Quarries Esquesing Township

Rideauview Contracts Ltd.

Address 2091 Washburn Road, RR 2
Inverary, ON K0H 1X0
Contact Jim Jackson, President
Tel: (613) 546-7779, Saw Shop: (613) 387-3851
Fax: (613) 546-2433
info@rideauviewcontracts.com
Website www.rideauviewcontracts.com
Quarries Camden, Portland, Pittsburgh, Rear of Leeds and Lansdowne Townships (near Kingston)

Rigbe Rock

Address 443 Railside Drive,
Brampton, ON L7A 1E1
Contact Tel: (705) 333-3523
info@rigberock.com
Website www.rigberock.com
Quarries Harvey Township (near Peterborough)

Rockleith Quarry Ltd.

Address 2181 Brennan Line,
Orillia, ON L3V 6H3
Contact Graham Harper
Tel: (705) 326-1407, (866) 288-2516
Fax: (705) 326-4634
grh1@live.ca
Website www.rockleith.com
Quarries Severn Township (near Orillia)

Rogue Resources

Address 44 Victoria Street, Suite 1612,
Toronto, ON M5C 1Y2
Contact Tel: (647) 243-6581
Info@roguerresources.ca
Website www.roguerresources.ca
Quarries Orillia, Bobcaygeon

Silicorp Developments Inc.

Address 144 Stephenson Road, 8 East
Huntsville, ON P0B 1M0
Contact Greg Marsh
Tel: (647) 220-6852
gregmarsh@rogers.com
Quarry Wyse Township (North Bay area)

Speiran Quarries

Address 376 Millard Street
Orillia, ON L3V 4H4
Contact Diane Speiran, Owner & Manager
Tel: (705) 329-4899
diane.speiran@sympatico.ca
Quarries Rama Township (near Orillia)

Stonescape Quarry

Address 2189 County Road 36, PO Box 72
Buckhorn, ON K0L 1J0
Contact Rob Darling
Tel: (705) 657-7111, (877) 657-7111
Fax: (866) 666-7325
rob@stonescapeinc.com
Website www.stonescapeinc.com
Quarries Harvey Township (near Peterborough)

Taillefer Quarry

Address 12301 Highway 17, Apartment 4
Sturgeon Falls, ON P2B 3K8
Contact Edgar Taillefer, Owner
Tel: (705) 471-7878, (705) 753-9077
Quarries Aylmer Township (near Capreol)

Ted Boyes and Sons Construction Limited

Address PO Box 75
Burk's Falls, ON P0A 1C0
Contact Tom Boyes, Manager
Tel: (705) 382-3626
Fax: (705) 382-2199
tomboyes10@gmail.com
Quarries Ryerson Township (near Parry Sound)

The Rock Centre

Address 140 Pinewood Park Drive
North Bay, ON P1B 8Z4
Contact Jamie Fuller
Tel: (705) 495-1744, (705) 358-3060
Fax: (705) 495-1745
info@therockcentre.ca
Website www.therockcentre.ca
Quarries 5 quarries, North Bay Area

Ontario Stone Depot

Address 144 Stephenson Road 8 East
Huntsville, ON P0B 1M0
Contact Jim Attridge
Tel: (800) 952 0296
info@ontariostonedepot.com
Website www.ontariostonedepot.com
Quarries near Huntsville

Upper Canada Stone Company Ltd.

Address 3094 Line 4 North, RR 1
Oro Medonte, ON L0L 2L0
Contact Richard Scratch, Vice-President
Tel: (705) 835-7530, (800) 806-0000
Fax: (705) 835-7535
sales@uppercanadastone.com
Website www.uppercanadastone.com
Quarries Gibbons Township (near Sudbury), Mayo, Cashel, Madoc, Rear of Leeds and Lansdowne Townships (near Kingston)

Muskoka Rock Company

Address 1165 Bethune Drive North
Gravenhurst, ON P1P 1R1
Contact Tel: (705) 787-6241 (quarry), (705) 687-8700 (sales)
Fax: (705) 687-8703
E-mail: sales@muskokarockcompany.com
Website www.muskokarockcompany.com
Quarries Franklin Township (near Huntsville)

Warton Stone Quarry Inc.

Address 3577 Bruce Road 13, RR 3
Warton, ON N0H 2T0
Contact Mike Ebel
Tel: (519) 534-2226
Fax: (519) 534-5120
mike@wartonstonequarry.com
Website www.wartonstonequarry.com
Quarries Amabel Township (near Owen Sound)

Characterize your physical properties on DDH Core Sample, Outcrops and Borehole!

SCIP Tester
Resistivity and Chargeability

Conductivity and Mag/Susc

GDD INSTRUMENTATION INC.
MPP-EM2S+
www.gdd.ca
E-Mail: gdd@gdd.ca

Canadian Manufacturer of Geophysical Instruments since 1978

SASKATOON OFFICE

P: 306 933 3010
F: 306 242 3156
E: nrtinquiry@nrtp.com

LA RONGE TRAINING CENTER

P: 306 425 2148
F: 306 425 5311
E: rmihilewicznrtp@sasktel.net

WINNIPEG OFFICE

P: 204 235-4013
F: 204 233-2929
E: dgravatt@nrtp.com

FUEL DIVISION

La Ronge
P: 866-425-2345
E: dlee@nrtp.com



www.nrtp.com



CORPORATE OFFICES OF COMPANIES WITH METAL MINES IN ONTARIO

Alamos Gold Inc.

181 Bay Street, Suite 3910
Toronto, ON M5J 2T3
Toll free: 1-866-788-8801
Tel: (416) 368-9932
www.alamosgold.com
• Island Gold Mine
• Young-Davidson Mine

Barrick Gold Corp.

Brookfield Place, TD Canada Trust Tower
161 Bay Street, Suite 3700, PO Box 212
Toronto, ON M5J 2S1
Toll free: 1-800-720-7415
Tel: (416) 861-9911
www.barrick.com
• Williams Mine

Evolution Mining Ltd.

175 Liverpool Street, Level 24
Sydney, NSW 2000
Tel: 61-2-9696-2900
Fax: 61-2-9696-2901
www.evolutionmining.com.au
• Red Lake Gold Mines (Cochenour
Mine and Red Lake Mine)

Ferromin Inc.

158 Don Hillock Drive, Unit 13
Aurora, ON L4G 0G9
Toll free: 1-800-465-5066
Tel: (905) 727-7100
Fax: (905) 727-0060
www.ferromininc.com
• Tomclid Iron Mine

Glencore PLC

Glencore Canada Corp.
100 King Street West, Suite 6900
Toronto, ON M5X 1E3
Tel: (416) 775-1500
Fax: (416) 775-1744
www.glencore.ca
• Kidd Creek Mine

Glencore PLC

Sudbury Integrated Nickel Operations
6 Edison Road
Falconbridge, ON P0M 1S0
Tel: (705) 693-2761 ext. 3120
www.sudburyino.ca
• Fraser Mine
• Nickel Rim South Mine

Harte Gold Corp.

161 Bay Street, Suite 2400
Toronto, ON M5J 2P1
Tel: (416) 368-0999
Fax: (416) 853-3690
www.hartegold.com
• Sugar Zone Mine

Impala Platinum Holdings Ltd.

Impala Canada Ltd.
One University Avenue, Suite 1601
Toronto, ON M5J 2P1
Tel: (416) 360-7590
Fax: (416) 360-7709
www.nap.com
• Lac des Iles Mine

KGHM Polska Miedz S.A.

KGHM International Ltd.
191 Creditview Road, Suite 400
Vaughan, ON L4L 9T1
Tel: (647) 265-9191
www.kghm.com
• McCreedy West Mine

Kirkland Lake Gold Ltd.

Royal Bank Plaza, South Tower
200 Bay Street, Suite 2800
Toronto, ON M5J 2J1
Tel: (416) 840-7884
www.kl.gold
• Detour Lake Gold Mine
• Holloway-Holt Mine (Holt Complex)
• Taylor Mine (Holt Complex)
• Macassa Mine

McEwen Mining Inc.

150 King Street West, Suite 2800
Toronto, ON M5H 1J9
Toll free: 1-866-441-0690
Tel: (647) 258-0395
Fax: (647) 258-0408
www.mcewenmining.com
• Black Fox Mine

New Gold Inc.

Brookfield Place
181 Bay Street, Suite 3320
Toronto, ON M5J 2T3
Tel: (416) 324-6000
www.newgold.com
• Rainy River Mine

Newmont Corp.

666 Burrard Street, Suite 3260
Vancouver, BC V6C 2X8
Tel: (604) 696-3000
www.newmont.com
• Musselwhite Mine
• Porcupine Gold Mines (Borden
Mine, Hollinger Mine, and Hoyle
Pond Mine)

Pan American Silver Corp.

Lake Shore Gold Corp.
625 Howe Street, Suite 1440
Vancouver, BC V6C 2T6
Tel: (604) 684-1175
Fax: (604) 684-0147
www.panamericansilver.com
• Bell Creek Mine
• Timmins West Mine

Vale S.A.

Vale Canada Limited
Royal Bank Plaza, South Tower
200 Bay Street, Suite 1500
Toronto, ON M5J 2K2
Tel: (416) 361-7511
www.vale.com/canada
• Coleman Mine
• Copper Cliff North Mine
• Creighton Mine
• Garson Mine
• Totten Mine

Wesdome Gold Mines Ltd.

220 Bay Street, Suite 1200
Toronto, ON M5J 2W4
Tel: (416) 360-3743
www.wesdome.com
• Eagle River Mine
• Mishi Mine

Advanced Mineral Projects in Ontario 2021



COMPANIES ACTIVELY EXPLORING IN ONTARIO 2021

Affinity Metals Corp.

890 West Pender Street, Suite 600
Vancouver, BC V6C 1J9
(604) 227-3554
www.affinitymetals.ca

Agnico Eagle Mines Ltd.

145 King Street East, Suite 400
Toronto, ON M5C 2Y7
(416) 947-1212
www.agnicoeagle.com

Alamos Gold Inc.

181 Bay Street, Suite 3910
Toronto, ON M5J 2T3
(416) 368-9932
www.alamosgold.com

ALX Resources Corp.

1199 West Pender Street, Suite 408
Vancouver, BC V6E 2R1
(604) 629-0293
www.alxresources.com

Angus Gold Inc.

(formerly Angus Ventures Inc.)

18 King Street East, Suite 902
Toronto, ON M5C 1C4
(416) 777-6772
www.angusgold.com

Appia Energy Corp.

2 Toronto Street, Suite 500
Toronto, ON M5C 2B6
(416) 546-2707
www.appiaenergy.ca

Ardiden Ltd.

34 Colin Street, Level 1
West Perth, WA 6005 Australia
61-8-9322-7600
www.ardiden.com.au

Argo Gold Inc.

350 Bay Street, Suite 700
Toronto, ON M5H 2S6
(416) 786-7860
www.argogold.ca

Argonaut Gold Inc.

100 King Street West, Suite 5700
Toronto, ON M5X 1C7
(416) 915-3107
www.argonautgold.com

Atacama Resources International Inc.

33 Father Costello Drive, PO Box 811
Schumacher, ON P0N 1G0
www.aclintl.com

AurCrest Gold Inc.

22 Adelaide Street West, Suite 3600
Toronto, ON M5H 4E3
(807) 737-5353
www.aurcrest.ca

Aurelius Minerals Inc.

110 Yonge Street, Suite 1900
Toronto, ON M5C 1T4
(416) 304-9095
www.aureliusminerals.com

Auteco Minerals Ltd.

24 Outram Street, Ground Floor
West Perth, WA 6005 Australia
61-8-9220-9030
www.autecominerals.com.au

Avalon Advanced Materials Inc.

130 Adelaide Street West, Suite 1901
Toronto, ON M5H 3P5
(416) 364-4938
www.avalonadvancedmaterials.com

Barrick Gold Corp.

161 Bay Street, Suite 3700
Toronto, ON M5J 2S1
(416) 861-9911
www.barrick.com

Battle North Gold Corp.

(formerly Rubicon Minerals Corp.)

121 King Street West, Suite 830
Toronto, ON M5H 3T9
(416) 766-2804
www.battlenorthgold.com

Benton Resources Inc.

684 Squier Street
Thunder Bay, ON P7B 4A8
(807) 475-7474
www.bentonresources.ca

Bold Ventures Inc.

22 Adelaide Street West, Suite 3600
Toronto, ON M5H 4E3
(416) 864-1456
www.boldventuresinc.com

Braveheart Resources Inc.

16 Street Northwest, Suite 2520
Calgary, AB T2M 3R2
(647) 725-3888
www.braveheartresources.com

Brigadier Gold Ltd.

40440 Thunderbird Ridge, PO Box 1831
Garibaldi Highlands, BC V0N 1T0
(604) 377-0403
www.brigadiergold.ca

Brixton Metals Corp.

409 Granville Street, Suite 551
Vancouver, BC V6C 1T2
(604) 630-9707
www.brixtonmetals.com

BTU Metals Corp.

789 West Pender Street, Suite 1240
Vancouver, BC V6C 1H2
(604) 683-3995
www.btumetals.com

Cadillac Ventures Inc.

1099 Kingston Road, Suite 269
Pickering, ON L1V 1B5
(416) 203-7722
www.cadillacventures.com

Caldas Gold Corp.

401 Bay Street, Suite 2400, PO Box 15
Toronto, ON M5H 2Y4
(416) 360-4653
www.caldasgold.ca

Canada Nickel Company Inc.

130 King Street West, Suite 1900
Toronto, ON M5X 1E3
(647) 256-1954
www.canadanickel.com

Canada Silver Cobalt Works Inc.

(formerly Canada Cobalt Works Inc.)
3028 Quadra Court
Coquitlam, BC V3B 5X6
(416) 625-2342
www.canadasilvercobaltworks.com

Canadian Palladium Resources Inc.

(formerly 21C Metals Inc.)

1558 West Hastings Street
Vancouver, BC V6G 3J4
(604) 639-4452
www.canadianpalladium.com

Canadian Silver Hunter Inc.

65 Harbour Square, Suite 904
Toronto, ON M4J 2L4
(416) 707-4230
www.canadiansilverhunter.ca

Canadian Wollastonite

6675 Highway 15
Seeleys Bay, ON K0H 2N0
(613) 387-2734
www.canadianwollastonite.com

Champion Bear Resources Ltd.

9th Street Southwest, Suite 2005
Calgary, AB T2T 3C4
(403) 229-9522
www.championbear.com

Class 1 Nickel and Technologies Inc.

(formerly Lakefield Marketing Corporation)

82 Richmond Street East
Toronto, ON M5C 1P1
(416) 454-0166
www.class1nickel.com

Clean Air Metals Inc.

217 Queen Street West, Suite 401
Toronto, ON M5J 2Y1
(807) 252-7800
www.cleanairmetals.ca

Commander Resources Ltd.

1111 Melville Street, Floor 11
Vancouver, BC V6E 3V6
(604) 685-5254
www.commanderresources.com

Compass Minerals Canada Corp.

9900 West, Street 109, Suite 100
Overland Park, KS 66210
(913) 344-9200
www.compassminerals.com

Conquest Resources Ltd. (acquired

Canadian Continental Exploration Corp.)

55 University Avenue, Suite 1805
Toronto, ON M5J 2H7
(647) 728-4126
www.conquestresources.com

Copper Lake Resources Ltd.

1 King Street, Suite 4800
Toronto, ON M5H 1A1
(416) 561-3626
www.copperlakeresources.com

Cross River Ventures Corp.

800 West Pender Street, Suite 1430
Vancouver, BC V6C 2V6
(604) 227-6610
www.crossriverventures.com

Delta Resources Ltd.

1718 Christine Crescent
Kingston, ON K7L 4V4
(613) 328-1581
www.deltaresources.ca

Dixie Gold Inc.

15 Hornby Street, Suite 605
Vancouver, BC V6Z 2E6
(604) 687-2038
www.dixiegold.ca

Empire Metals Corp.
889 West Pender Street, Suite 702
Vancouver, BC V6C 3B2
(604) 683-3288
www.empiremetalscorp.com

Ethos Gold Corp.
800 West Pender Street, Suite 1430
Vancouver, BC V6C 2V6
(604) 682-4750
www.ethosgold.com

Evolution Mining Ltd.
175 Liverpool Street, Level 24
Sydney, NSW 2000
61-2-9696-2900
www.evolutionmining.com.au

Falcon Gold Corp.
1111 Melville Street, Suite 1100
Vancouver, BC V6E 3V6
(416) 477-1220
www.falcongold.ca

Fancamp Exploration Ltd.
340 Victoria Avenue
Westmount, QC H3Z 2M8
(514) 481-3172
www.fancampexplorationltd.ca

First Cobalt Corp.
401 Bay Street, 6th Floor
Toronto, ON M5H 2Y4
(416) 900-3891
www.firstcobalt.com

**First Mining Gold Corp.
(acquired PC Gold Inc.)**
1188 West Georgia Street, Suite 2070
Vancouver, BC V6E 4A2
(844) 306-8827
www.firstmininggold.com

**Frontier Lithium Inc.
(formerly Houston Lake Mining Inc.)**
2736 Belisle Drive
Val Caron, ON P3N 1B3
(705) 897-7622
www.frontierlithium.com

Frontline Gold Corp.
372 Bay Street, Suite 301
Toronto, ON M5H 2W9
(416) 681-9090
www.frontlinegold.com

**Fuse Cobalt Inc.
(formerly LiCo Energy Metals Inc.)**
789 Pender Street, Suite 1220
Vancouver, BC V6C 1H2
(236) 521-0207
www.fusecobalt.com

**G2 Goldfields Inc.
(formerly Sandy Lake Gold Inc.)**
141 Adelaide Street West, Suite 1101
Toronto, ON M5H 3L5
(416) 628-5904
www.g2goldfields.com

**Galleon Gold Corp.
(formerly Pure Nickel Inc.)**
161 Bay Street, TD Canada Trust Tower,
27th Floor, PO Box 508
Toronto, ON M5J 2S1
(416) 644-0066
www.galleongold.com

Gatling Exploration Inc.
200 Burrard Street, Suite 1680
Vancouver, BC V6C 3L6
(604) 678-5308
www.gatlingexploration.com

Generation Mining Ltd.
100 King Street West, Suite 7010,
PO Box 70
Toronto, ON M5X 1B1
(416) 640-0280
www.genmining.com

GFG Resources Inc.
640 Broadway Avenue, Suite 202
Saskatoon, SK S7N 1A9
(306) 931-0930
www.gfgresources.com

**Glencore Canada Corp. (subsidiary of
Glencore PLC)**
100 King Street West, Suite 6900
Toronto, ON M5X 1E3
(416) 775-1556
www.glencore.ca

Glencore PLC
Baarerstattstrasse 3
Baar, CH-6340 Switzerland
41-41-709-2000
www.glencore.com

Global Energy Metals Corp.
128 West Pender Street, Suite 1501
Vancouver, BC V6B 1R8
(604) 688-4219
www.globalenergymetals.com

Globex Mining Enterprises Inc.
89 Belsize Drive
Toronto, ON M4S 1L3
(819) 797-5242
www.globexmining.com



Right Solutions · Right Partner
alsglobal.com

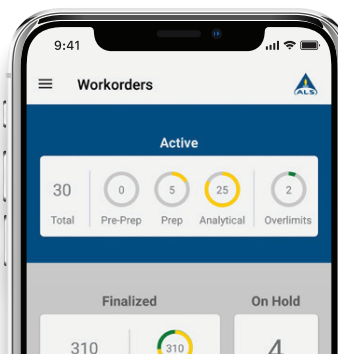
LEADING PROVIDER OF ANALYTICAL GEOCHEMISTRY SERVICES

via an integrated global network of
laboratories with consistent quality
and expert client service.



Track your samples & receive alerts with the
ALS Geochemistry App

Available on the
App Store



ANDROID APP ON
Google play



ClientServicesECAN@alsglobal.com | +1 705-560-7225
alsglobal.com/geochemistry

Gold Plus Mining Inc.

570 Granville Street, Suite 303
Vancouver, BC V6C 2P1
(604) 785-4229
www.goldplusmining.com

Golden Goliath Resources Ltd.

688 West Hastings Street, Suite 910
Vancouver, BC V6B 1P1
(604) 682-2950
www.goldengoliath.com

Golden Share Resources Corp.

145 Riviera Drive, Unit 7
Markham, ON L3R 5J6
(647) 567-5599
www.goldenshare.ca

**Gold'n Futures Mineral Corp.
(formerly European Metals Corp.)**

789 West Pender Street, Suite 810
Vancouver, BC V6C 1H2
(604) 687-2038
www.goldnfuturesmineralcorp.com

**GoldON Resources Ltd.
(formerly Newcastle Minerals Ltd.)**

108-800 Kelly Road, Suite 416
Victoria, BC V9B 6J9
(250) 474-7999
www.goldonresources.com

Gowest Gold Ltd.

80 Richmond Street, Suite 1400
Toronto, ON M5H 2A4
(416) 363-1210
www.gowestgold.com

Great Bear Resources Ltd.

800 West Pender Street, Suite 1020
Vancouver, BC V6C 2V6
(604) 646-8354
www.greatbearresources.ca

**Greenstone Gold Mines GP Inc. (joint
venture of Orion Mine Finance /
Premier Gold Mines Ltd., formerly a joint
venture of Premier Gold Mines Ltd. /
Centerra Gold Inc.)**

2381 Bristol Circle, Suite B203
Oakville, ON L6H 5S9
(807) 854-1886
www.greenstonegoldmines.com

Greycliff Exploration Ltd.

401 Bay Street, Suite 2702
Toronto, ON M5H 2Y4
(416) 862-7003
www.graycliffexploration.com

Grid Metals Corp.

3335 Yonge Street, Suite 304
Toronto, ON M4N 2M1
(416) 955-4773
www.gridmetalscorp.com

Group Ten Metals Inc.

409 Granville Street, Suite 904
Vancouver, BC V6C 1T2
(604) 357-4790
www.grouptenmetals.com

Harte Gold Corp.

161 Bay Street, Suite 2400
Toronto, ON M5J 2S1
(416) 368-0999
www.hartegold.com

**Hemlo Explorers Inc.
(formerly Canadian Orebodies Inc.)**

141 Adelaide Street West, Suite 301
Toronto, ON M5H 3L5
(647) 227-3035
www.hemloexplorers.ca

HighGold Mining Inc.

800 West Pender Street, Suite 320
Vancouver, BC V6C 2V6
(604) 629-1165
www.highgoldmining.com

**Honey Badger Silver Inc. (formerly Honey
Badger Exploration Inc.)**

401 Bay Street, Suite 2117
Toronto, ON M5H 2Y4
(416) 642-1807
www.honeybadgersilver.com

IAMGOLD Corp.

401 Bay Street, Suite 3200, PO Box 153
Toronto, ON M5H 2Y4
(416) 360-4710
www.iamgold.com

IM Exploration Inc.

181 Bay Street, Suite 4400, Brookfield
Place
Toronto, ON M5J 2T3
(647) 880-6414

iMetal Resources Inc.

580 Hornby Street, Suite 510
Vancouver, BC V6C 3B6
(604) 484-3031
www.imetalresources.ca

**Impala Canada Ltd. (subsidiary of Impala
Platinum Holdings Ltd.)**

1 University Avenue, Suite 1601
Toronto, ON M5J 2P1
(416) 360-7590
www.impalacanada.com

Infinite Ore Corp.

(formerly Infinite Lithium Corp.)
789 West Pender Street, Suite 1240
Vancouver, BC V6C 1H2
(604) 683-3995
www.infiniteore.com

International Lithium Corp.

1030 West Georgia Street, Suite 1910
Vancouver, BC V6E 2Y3
(604) 449-6520
www.internationallithium.com

International Montoro Resources Inc.

175 Victory Ship Way, Unit 110
North Vancouver, BC V7L 0B2
(604) 670-0019
www.montororesources.com

Inventus Mining Corp.

82 Richmond Street East, Floor 1
Toronto, ON M5C 1P1
(647) 258-0395 ext. 280
www.inventusmining.com

Joshua Gold Resources Inc.

1321 Dundas Street
Woodstock, ON N4S 7V9
(226) 888-5610
www.joshuagoldresources.com

Kesselrun Resources Ltd.

278 Bay Street, Suite 102
Thunder Bay, ON P7B 1R8
(866) 416-7941
www.kesselrunresources.com

KGHM International Ltd.

191 Creditview Road, Suite 400
Vaughan, ON L4L 9T
(647) 265-9191
www.kghm.com

**Kinross Gold Corporation (KG Exploration
(Canada) Inc.)**

25 York Street, Floor 17
Toronto, ON M5J 2V5
(416) 365-5123
www.kinross.com

**Kirkland Lake Gold Ltd. (acquired Detour
Gold Corp.)**

200 Bay Street, Royal Bank Plaza, Suite
3120, South Tower
Toronto, ON M5J 2J1
(416) 840-7884
www.klgold.com

Landore Resources Canada Inc.

555 Central Avenue, Suite 1
Thunder Bay, ON P7B 5R5
(807) 623-3770
www.landore.com

LaSalle Exploration Corp.

1281 West Georgia Street, Suite 502
Vancouver, BC V6E 3J7
(604) 647-3966
www.lasallecorp.com

Laurion Mineral Exploration Inc.

40 King Street West, Suite 5800
Toronto, ON M5H 3S1
(705) 788-9186
www.laurion.ca

MacDonald Mines Exploration Ltd.

145 Wellington Street West, Suite 1001
Toronto, ON M5J 1H8
(416) 364-4986
www.macdonaldmines.com

Magna Mining Corp. (Ursa Major Minerals)

45 Oak Street, PO Box 130
Dowling, ON POM 1R0
(416) 317-3773
www.magnamining.com

Makara Mining Corp.

905 West Pender Street, Floor 6
Vancouver, BC V6C 1L6
(250) 208-4364
www.makaramining.com

Manitou Gold Inc.

82 Richmond Street East
Toronto, ON M5C 1P1
(705) 698-1962
www.manitougold.com

Maxtech Ventures Inc.

595 Howe Street, Suite 702
Vancouver, BC V6C 2T5
(604) 484-0355
www.maxtech-ventures.com

McEwen Mining Inc.

150 King Street West, Suite 2800
Toronto, ON M5H 1J9
(647) 258-0395
www.mcewenmining.com

McLaren Resources Inc.

44 Victoria Street, Suite 1616
Toronto, ON M5C 1Y2
(416) 203-6784
www.mclarenresources.com

Melkior Resources Inc.

66 Brousseau Avenue, Suite 207
Timmins, ON P4N 5Y2
(226) 271-5170
www.melkior.com

Metalex Ventures Ltd.
1634 Harvey Avenue, Suite 203
Kelowna, BC V1Y 6G2
(250) 860-8599
www.metalexventures.com

Metalore Resources Ltd.
PO Box 422
Simcoe, ON N3Y 4L5
(519) 428-2464
www.metalorerresources.com

Metals Creek Resources Corp.
945 Cobalt Crescent
Thunder Bay, ON P7B 5Z4
(807) 345-4990
www.metalscreek.com

Mistango River Resources Inc.
55 University Avenue, Suite 1805
Toronto, ON M5J 2H7
(416) 644-1567
www.mistango.com

Moneta Porcupine Mines Inc.
65 Third Avenue
Timmins, ON P4N 1C2
(647) 456-9223
www.monetaporcupine.com

New Age Metals Inc.
2148 West 38th Avenue, Suite 101
Vancouver, BC V6M 1R9
(604) 685-1870
www.newagemetals.com

New Gold Inc.
181 Bay Street, Suite 3320,
Brookfield Place
Toronto, ON M5J 2T3
(416) 324-6000
www.newgold.com

Newmont Corp.
(formerly Newmont Goldcorp Corp.)
666 Burrard Street, Suite 3260
Vancouver, BC V6C 2X8
(604) 696-3000
www.newmont.com

Newrange Gold Corp.
580 Hornby Street, Suite 510
Vancouver, BC V6C 3B6
(604) 669-0868
www.newrangegold.com

Nexus Gold Corp.
750 West Pender Street, Suite 802
Vancouver, BC V6C 2T8
(604) 558-1919
www.nexusgoldcorp.com

Niobay Metals Inc.
1100 avenue des Canadiens-de-Montreal,
Suite 300
Montreal, QC H3B 2S2
(514) 866-6500
www.niobaymetals.com

Noble Mineral Exploration Inc.
120 Adelaide Street West, Suite 250
Toronto, ON M5H 1T1
(416) 214-2250
www.noblemineralexploration.com

Noront Resources Ltd.
212 King Street West, Suite 501
Toronto, ON M5H 1K5
(416) 367-1444
www.norontresources.com

North American Nickel Inc.
666 Burrard Street, Suite 2500
Vancouver, BC V6C 2X8
(604) 770-4334
www.northamericannickel.com

Northern Graphite Corp.
PO Box 279
Manotick, ON K4M 1K7
(613) 241-9959
www.northerngraphite.com

Northern Superior Resources Inc.
1351c Kelly Lake Road, Unit 7
Sudbury, ON P3E 5P5
(705) 525-0992
www.nsuperior.com

Northstar Gold Corp.
17 Wellington Street North
New Liskeard, ON P0J 1P0
(604) 617-8191
www.northstargoldmining.com

Nuinsco Resources Ltd.
80 Richmond Street West, 18th Floor
Toronto, ON M5H 2A4
(416) 626-0470
www.nuinsco.ca

O3 Mining Inc.
155 University Avenue, Suite 1440
Toronto, ON M5H 3B7
(416) 363-8653
www.o3mining.com

Ore Chimney Gold Inc.
150 24th Street, Suite 408 West
Vancouver, BC V7V 4G8
(604) 355-9986
www.orechimneygold.com

PROdrill

NORTHWESTERN ONTARIO'S LARGEST DIAMOND DRILLING INVENTORY

a **SLING-CHOKER** brand
MANUFACTURING



SLING-CHOKER
MANUFACTURING



PROdrill products are available from our Thompson, Winnipeg, Balmertown, and Thunder Bay branches. We offer quick and personalized service wherever you're drilling.

slingchoker.com

Orefinders Resources Inc.
(subs. OrePower Inc.)

55 University Avenue, Suite 1805
Toronto, ON M5J 2H7
(416) 644-1567
www.orefinders.ca

P2 Gold Inc.

355 Burrard Street, Suite 1100
Vancouver, BC V6C 2G8
(604) 558-5167
www.p2gold.com

Pacton Gold Inc.

200 Burrard Street, Suite 1680
Vancouver BC V6C 3L6
(855) 584-0258
www.pactongold.com

Palladium One Mining Inc.

800 West Pender Street, Suite 550
Vancouver, BC V6C 2V6
(778) 327-5799
www.palladiumoneinc.com

Pan American Silver Corp.

625 Howe Street, Suite 1440
Vancouver, BC V6C 2T6
(604) 684-1175
www.panamericansilver.com

Pancontinental Resources Corp.

217 Queen Street West, Suite 401
Toronto, ON M5V 0R2
(416) 293-8437 / (647) 202-0994
www.panconresources.com

Panther Metals PLC

Eastways Enterprise Centre, 7 Paynes
Park
Hitchin, Hertfordshire SG5 1EH
United Kingdom
44-(0)-1462-429743
www.panthermetals.co.uk

Pelangio Exploration Inc.

82 Richmond Street East
Toronto, ON M5C 1P1
(905) 336-3828
www.pelangio.com

Pistol Bay Mining Inc.

838 West Hastings Street, Suite 700
Vancouver, BC V6C 0A6
(604) 675-9985
www.pistolbay.ca

Platinex Inc.

20 William Roe Boulevard, Suite 807
Newmarket, ON L3Y 5V6
(905) 470-6400
www.platinex.com

Plato Gold Corp.

1240 Bay Street, Suite 800
Toronto, ON M5R 2A7
(416) 968-0608
www.platogold.com

Portofino Resources Inc.

470 Granville Street, Suite 520
Vancouver, BC V6C 1V5
(604) 683-1991
www.portofinoresources.com

Power Metals Corp.

1055 West Hastings Street, Suite 300
Vancouver, BC V6E 2E9
(646) 661-0409
www.powermetalscorp.com

Premier Gold Mines Ltd.

1100 Russell Street, Suite 200
Thunder Bay, ON P7B 5N2
(807) 346-1390
www.premiergoldmines.com

Probe Metals Inc.

56 Temperance Street, Suite 1000
Toronto, ON M5H 3V5
(416) 777-6703
www.probemetals.com

Prosper Gold Corp.

1177 West Hastings Street, Suite 2300
Vancouver, BC V6E 2K3
(604) 638-3663
www.prospergoldcorp.com

Pure Gold Mining Inc.

1055 West Hastings, Suite 1900
Vancouver, BC V6E 2E9
(604) 646-8000
www.puregoldmining.ca

Q-Gold Resources Ltd.

65 Queen Street West, Unit 800
Toronto, ON M5H 2M5
(416) 571-9037
www.qgoldresources.com

Red Lake Gold Inc.

(formerly Pivit Exploration Inc.)
815 Hornby Street, Suite 605
Vancouver, BC V6Z 2E6
(604) 652-1710
www.redlakegold.ca

Red Pine Exploration Inc.

145 Wellington Street West, Suite 1001
Toronto, ON M5J 1H8
(416) 364-7024
www.redpineexp.com

Richmond Minerals Inc.

120 Adelaide Street West, Suite 2500
Toronto, Ontario M5H 1T1
(416) 603-2114
www.richmondminerals.com

Rio Tinto Exploration Canada Inc.
(subsidiary of Rio Tinto)

1190 Avenues Des-Canadiens-De-
Montreal, Suite 400
Montreal, QC H3B 0E3
(514) 848-8000
www.riotinto.com

Riverside Resources Inc.

800 West Pender Street, Suite 550
Vancouver BC, V6C 2V6
(778) 327-6671
www.rivres.com

RJK Explorations Ltd.

4 Al Wende Avenue, Box 1053
Kirkland Lake, ON P2N 3L1
(705) 568-7445
www.rjkexplorations.com

Rock Tech Lithium Inc.

777 Hornby Street, Suite 600
Vancouver, BC V6Z 1S4
(778) 358-5200
www.rocktechlithium.com

Rockridge Resources Ltd.

777 Dunsmuir Street, Suite 1610
Vancouver, BC V7Y 1K4
(604) 558-5847 / (604) 416-2978
www.rockridgeresourcesltd.com

Rogue Resources Inc.

44 Victoria Street, Suite 1612
Toronto, ON M5C 1Y2
(647) 243-6581
www.rogueresources.ca

Romios Gold Resources Inc.

2 Toronto Street, Suite 500
Toronto, ON M5C 2B6
(416) 221-4124
www.romios.com

RT Minerals Corp.

595 Howe Street, Suite 1100
Vancouver, BC V6C 2T5
(604) 681-3170
www.rtmcorp.com

Sanatana Resources Inc.

925 West Georgia Street, Suite 1910
Vancouver, BC V6C 3L2
(604) 408-6680
www.sanatanaresources.com

Satori Resources Inc.

401 Bay Street, Suite 2702, PO Box 86
Toronto, ON M5H 2Y4
(416) 303-3344
www.satoriresources.ca

Signature Resources Ltd.

366 Bay Street, Suite 200
Toronto, ON M5H 4B2
(416) 419-1827
www.signatureresources.ca

Silver Dollar Resources Inc.

108 - 800 Kelly Road, Suite 416
Victoria, BC V9B 6J9
(250) 474-7999
silverdollarresources.com

Silver Sands Resources Corp.

(formerly Golden Opportunity Resources Corp.)
1100 Melville, Suite 830
Vancouver, BC V6E 4A6
(604) 786-7774
www.silversandscorp.com

Skead Holdings Ltd.

28 Ford Street
Sault Ste. Marie, ON P6A 4N4

Sparton Resources Inc.

81A Front Street East, Suite 216
Toronto, ON M5E 1Z7
(647) 344-7734
www.spartonres.ca

SPC Nickel Corp.

(formerly Sudbury Platinum Corp.)
410 Falconbridge Road, Unit 5
Sudbury ON, P3A 4S4
(705) 669-1777
www.spcnickel.com

Spruce Ridge Resources Ltd.

7735 Leslie Road West
Puslinch, ON N0B 2J0
(519) 822-5904 / (519) 829-6113
www.spruceridgeresources.com

Stillwater Canada Inc.

(subsidiary of Sibanye-Stillwater Ltd.)
100 Memorial Avenue, Suite 357
Thunder Bay, ON P7B 4A3
(807) 285-4272
www.sibanyestillwater.com

Stone Gold Inc.
(formerly CR Capital Corp.)
 82 Richmond Street East
 Toronto, ON M5C 1P1
 (647) 227-3035
 www.crcapitalcorp.com

Superior Lake Resources Ltd.
 1202 Hay Street, Emerald House,
 PO Box 749
 West Perth, WA 6005
 61-8-6117-0479
 www.superiorlake.com.au

Tartisan Nickel Corp.
 44 Victoria Street, Suite 1102
 Toronto, ON M5C 1Y2
 (416) 804-0280
 www.tartisannickel.com

TomaGold Corp.
 410 St-Nicolas Street, Suite 236
 Montreal, QC H2Y 2P5
 (514) 583-3490
 www.tomagoldcorp.com

Tombill Mines Ltd. (formerly Bluerock Ventures Corp.)
 1055 West Georgia Street, Suite 2050
 Vancouver, BC V6E 3P3
 +44 (0) 207-529-2361
 www.tombillmines.com

Transition Metals Corp.
 410 Falconbridge Road, Unit 5
 Sudbury, ON P3A 4S4
 (705) 669-1777
 www.transitionmetalscorp.com

Traxxin Resources Inc.
 377 Albert Street
 Stratford, ON N5A 2L1
 (519) 274-0817
 www.traxxinresources.wixsite.com

Treasury Metals Inc.
 130 King Street West, Suite 3680
 Toronto, ON M5X 1B1
 (416) 214-4654
 www.treasurymetals.com

Tri Origin Exploration Ltd.
 125 Don Hillock Drive, Unit 18
 Aurora, ON L4G 0H8
 (905) 727-1779
 www.triorigin.com

Trillium Gold Mines Inc.
(formerly Confederation Minerals Ltd.)
 1055 West Hasting Street, Suite 2250
 Vancouver, BC V6E 2E9
 (604) 688-9588
 www.trilliumgold.com

Vale Canada Ltd.
 200 Bay Street, Royal Bank Plaza, Suite
 1500, South Tower
 Toronto, ON M5J 2K2
 (416) 361-7511
 www.vale.com/canada

Victory Resources Corp.
 355 Burrard Street, Suite 1780
 Vancouver, BC V6C 2G8
 (236) 317-2822
 www.victoryresourcescorp.com

VR Resources Ltd.
 1177 West Hastings Street, Suite 2300
 Vancouver, BC V6E 2K3
 (604) 262-1104
 www.vrr.ca

Wallbridge Mining Company Ltd.
 129 Fielding Road
 Lively, ON P3Y 1L7
 (705) 682-9297
 www.wallbridgemin.com

Warrior Gold Inc.
 25 Adelaide Street East, Suite 1400
 Toronto, ON M5C 3A1
 (647) 344-3433
 www.warriorgoldinc.com

Wesdome Gold Mines Ltd.
 220 Bay Street, Suite 1200
 Toronto, ON M5J 2W4
 (416) 360-3743
 www.wesdome.com

West Red Lake Gold Mines Inc.
 82 Richmond Street East, Suite 200
 Toronto, ON M5C 1P1
 (416) 203-9181
 www.westredlakegold.com

White Metal Resources Corp.
 684 Squire Street
 Thunder Bay, ON P7B 4A8
 (807) 358-2420
 www.whitemetalres.com

ZEN Graphene Solutions Ltd.
 1205 Amber Drive, Suite 210
 Thunder Bay, ON P7B 6M4
 (844) 730-9822
 www.zengraphene.com

THE GEAR CENTRE OFF HIGHWAY

ROCK SOLID PARTS & SERVICE

TRANSMISSIONS • AXLES • TORQUE CONVERTERS
TRANSFER CASES • MULTI-BAY REBUILD SHOPS
24 HOUR EMERGENCY SERVICE TRUCK AVAILABLE!

ISO-9001

Dana Certified Service Center
 AXLETECH
 FUNK DRIVETRAIN COMPONENTS
 CARRARO
 Trabeo (R. CUSHMAN)
 KESSLER-CO

1-888-246-5077
 Bay #2, 7337 Pacific Circle, Mississauga
 www.gearcentre-offhwy.com

DIGIGEO DATA

Publishes the Shining Tree/ Gowganda Exploration Activity Map

NEWLY PRINTED SHINING TREE/ GOWGANDA EXPLORATION ACTIVITY MAP

DigiGeoData (DGD) have announced the release of the newly printed Shining Tree/Gowganda exploration activity map. These mining and metals resource exploration activity maps have been an industry standard for over 20 years. Hundreds of thousands of copies have been published and have been used by mining companies and investors.

These maps provide an overview on a global/country scale or a more focused regional basis that has significant exploration and/or mining activity.

The usual data of topography, mines, deposits and claims are shown, but the core value is the colour coding showing properties that companies have an economic interest in. These interests are quite often different from what a government data base would show due to option and joint venture

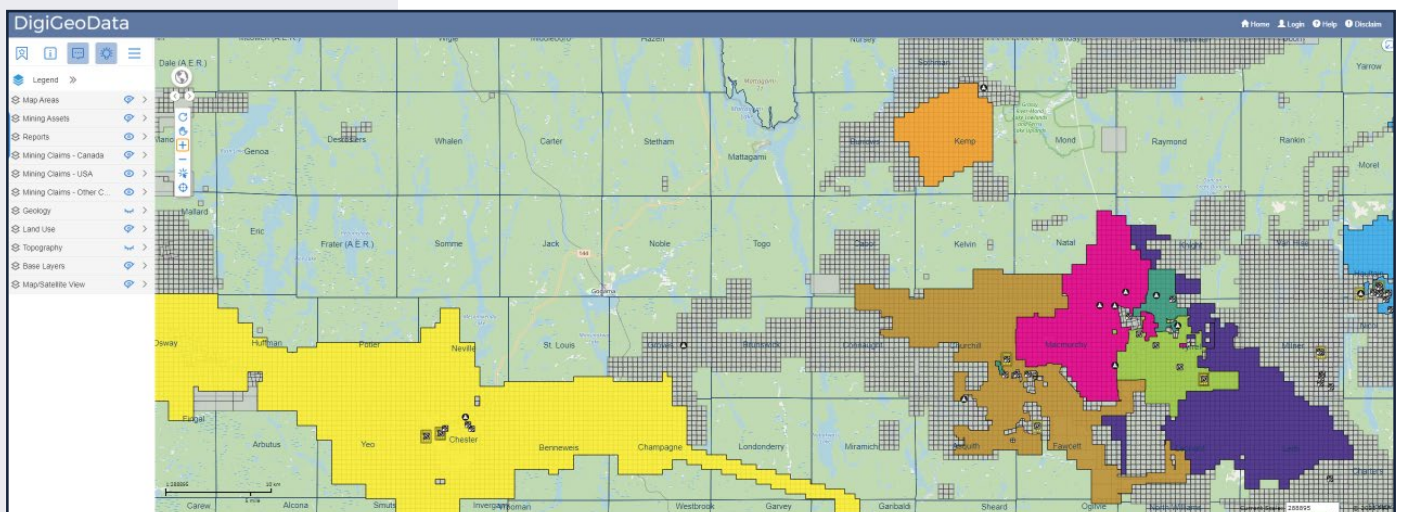
agreements with registered owners.

These maps have traditionally been produced in hard copy which provides the user with a hands-on and tactile experience. Once published, they are an excellent reference.

However, DigiGeoMaps has moved this trusted concept to a digital interface.

In addition to the valuable data on the hard copy maps, additional benefits include:

1. Reserves and resources
2. Mine production
3. Technical reports for viewing or downloading
4. Individual company profile pages with links to their websites
5. Area history
6. Regional Geology
7. Access to DigiGeoAtlas



DigiGeoAtlas

This powerful online GIS interactive mapping interface spatially links and displays data from DigiGeoMaps and DigiGeoData.

Data can be turned off or on from layers at different zoom levels. Functionality includes zoom, pan, query, search, markup, printing and exploring in shape and CSV format.

One of the highlights of Atlas is the ability to interrogate Canadian claim data seamlessly across Canada. Claims (leases and permits) from all Canadian provinces and territories are compiled with common fields.

A significant value added are the two layers that show both recently staked claims and claims that will be expiring in the next 30, 60 and 90 days. This is extremely valuable for monitoring activity within areas of interest.

With continuous innovation and development, DGD's business concept is to optimize technology that can support decision making, effectively enhance the quality of data and provide innovative solutions from market demands.

For more information about DigiGeoData, please visit <https://digigeodata.com>

For your free copy of the Shining Tree/Gowganda map, or for further information about DigiGeoAtlas, please contact: Glen Jones, 403.651.3086, or glenj@digigeodata.com Dan Subtelny, 647.285.5636, or dans@digigeodata.com

SHINING TREE / GOWGANDA
MINING and EXPLORATION ACTIVITY

ONTARIO, CANADA
FEBRUARY 2021

	2010	2009	2008	2007	2006
Total Production	2762.00	7155.08	9370	56,317	1482.90
Reserve Estimate	4200.00	6000	6000	6000	6000
Reserves					
Copper	0.00	0.00	0.00	0.00	0.00
Copper Equivalent	0.00	0.00	0.00	0.00	0.00
Iron	0.00	0.00	0.00	0.00	0.00
Iron Equivalent	0.00	0.00	0.00	0.00	0.00
Zinc	0.00	0.00	0.00	0.00	0.00
Zinc Equivalent	0.00	0.00	0.00	0.00	0.00
Silver	0.00	0.00	0.00	0.00	0.00
Silver Equivalent	0.00	0.00	0.00	0.00	0.00
Gold	0.00	0.00	0.00	0.00	0.00
Gold Equivalent	0.00	0.00	0.00	0.00	0.00
Platinum	0.00	0.00	0.00	0.00	0.00
Platinum Equivalent	0.00	0.00	0.00	0.00	0.00
Nickel	0.00	0.00	0.00	0.00	0.00
Nickel Equivalent	0.00	0.00	0.00	0.00	0.00
Cobalt	0.00	0.00	0.00	0.00	0.00
Cobalt Equivalent	0.00	0.00	0.00	0.00	0.00
Manganese	0.00	0.00	0.00	0.00	0.00
Manganese Equivalent	0.00	0.00	0.00	0.00	0.00
Vanadium	0.00	0.00	0.00	0.00	0.00
Vanadium Equivalent	0.00	0.00	0.00	0.00	0.00
Uranium	0.00	0.00	0.00	0.00	0.00
Uranium Equivalent	0.00	0.00	0.00	0.00	0.00
Other	0.00	0.00	0.00	0.00	0.00
Other Equivalent	0.00	0.00	0.00	0.00	0.00
Total	2762.00	7155.08	9370	56,317	1482.90

INDEX TO ADVERTISERS



ALS Geochemistry 39 www.alsglobal.net	International Union of Operating Engineers – Local 793 5 iuoelocal793.org	Questor Surveys Inc. 19 questorsurveys.com
Chibougamau Diamond Drilling Ltd. 33 chibougamaudrilling.ca	Major Drilling 31 majordrilling.com	SIGNAL Weather Services 17 signalweather.ca
Crone Geophysics & Exploration Ltd. 46 cronegeophysics.com	Morgan Fuels 17 www.morganfuels.ca	Sling-Choker Mfg. (Thunder Bay) Ltd. 21, 41 slingchoker.com
Custom Helicopters Ltd. 21 customheli.com	Mud Bay Drilling/Cone Tec 3 mudbaydrilling.com	Strike Copper Corp. Inside Front Cover
Elemental Controls Limited 15 www.elementalcontrols.com	Norske Drilling 13 emosl@nwon.com	Superior Exploration 9 superior-exploration.ca
G4 Drilling 3 g4drilling.com	Northern Resource Trucking 35 nrtlpc.com	Tashota Resources Inc. 23, 24, 25 tashotaresources.com
GDD Instrumentation 35 www.gddinstrumentation.com	ONYEN 11 onyen.com	The Gear Centre 43 www.gearcentre-offhwy.com
GEM Systems Outside Back Cover www.gemsys.ca	PearTree Securities 5 peartreecanada.com	Titan Environmental Containment 46 titanenviro.ca
GEOSIG Inc. 11 www.geosig.ca	PR Engineering 15 prengineering.com	

MARKETPLACE



CRONE GEOPHYSICS

Crone Geophysics & Exploration Ltd. is a full-service geophysical survey company who designs and manufactures all of their equipment in-house. Crone provides fast, safe, and reliable downhole and surface Pulse-EM, downhole and surface MMR, and E-SCAN 3D resistivity mapping services for deep mining exploration.

Email: info@cronegeophysics.com PH#: 905-814-0100
www.cronegeophysics.com



Titan offers innovative geosynthetic materials that boost the performance and safety of critical mining infrastructure. From underground mine tunnels, heap leach pads and channels, to mine vent walls and haul roads; our Concrete Canvas® and Mine-Shield Grid™ help increase mine productivity rates, reduce maintenance costs and improve underground mine safety.

CONTACT US:

P: 1-866-327-1957
E: info@titanenviro.com
W: www.titanenviro.com



PARTNER WITH US FOR YOUR FAST TRACK TO SUCCESS!

MediaEdge
Publishing
www.mediaedge.ca



PUBLISHING



DIGITAL



ADVERTISING

Our winning products
and services include:

- Magazines
- Directories
- Show Guides
- Events
- Profiles
- Buyers Guides
- E-Newsletters
- Custom Content Marketing
- Video
- Sponsorship Sales

Contact
Robert Thompson
1.647.494.4229



Systems & Solutions for Magnetic Surveying

Since 1980 Leading the World of Magnetics

Airborne



MAGBIRD



GRADBIRD



TRIAXBIRD

UAV



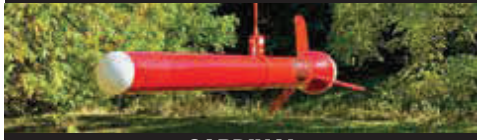
DRONEMAG™



AIRBIRD



AIRGRAD



CARDINAL



AirVLF

Ground



POTASSIUM
TECHNOLOGY

PROTON
TECHNOLOGY



OVERHAUSER TECHNOLOGY

Highest Precision & Absolute Accuracy

Magnetometers, Gradiometers, Magnetic Systems and EM Sensors for Mineral and Oil Exploration, UXO, Archeology and Earth Observation

Visit

www.GEMSYSTEMS.ca for details and pricing
Phone: 905 752 2202 Email: info@gemsys.ca