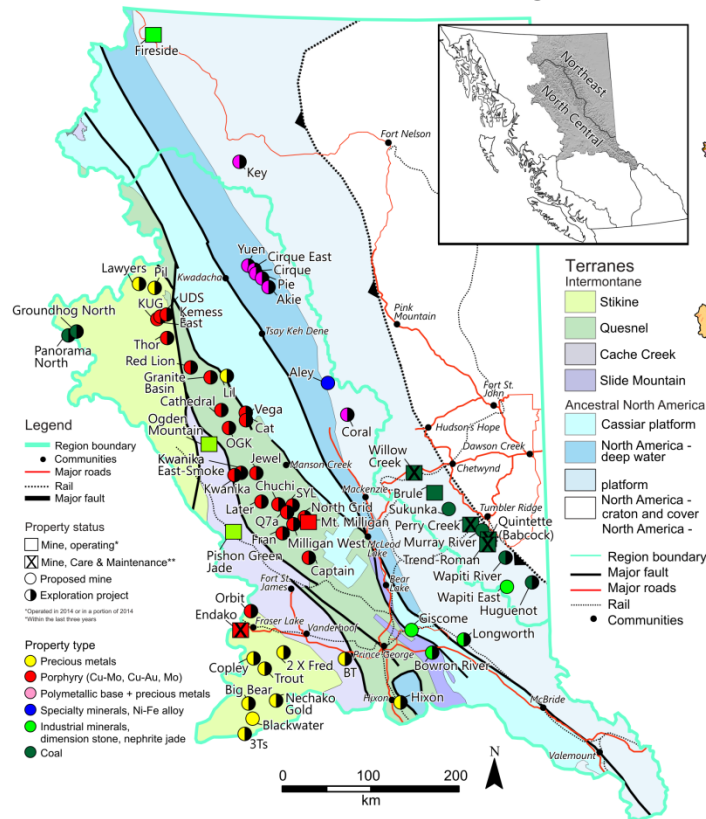


Mining & Exploration highlights

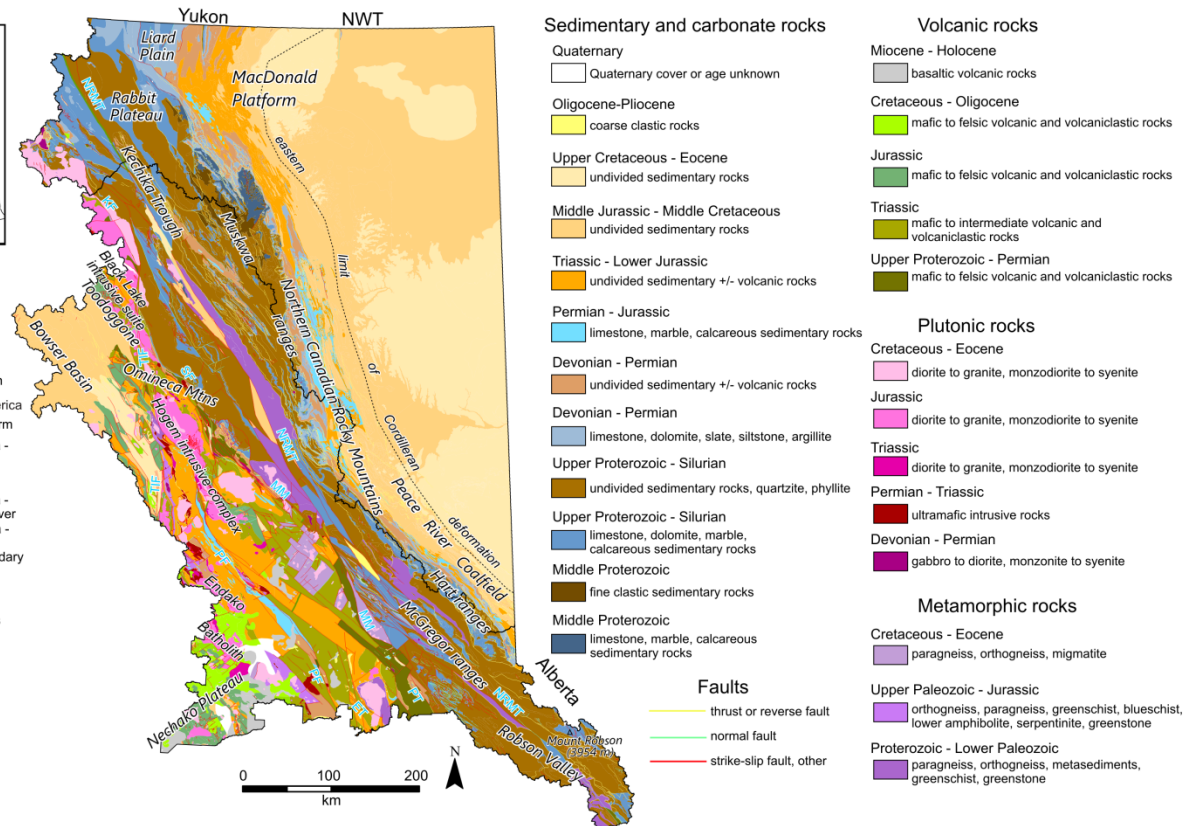
Northcentral & Northeast regions, British Columbia, 2016-17

C. Paul Jago - P.Geol., Regional Geologist, Prince George BC

Selected 2016 mineral exploration projects in the North Central and Northeast regions



Bedrock Geology of the North Central and Northeast regions



Talk agenda



Northcentral & Northeast regions

- 1) deposit/commodity types (& spatial distribution)
- 2) 2016 regional statistics
- 3) selected projects in regions:
Northeast to Northcentral (north to south)

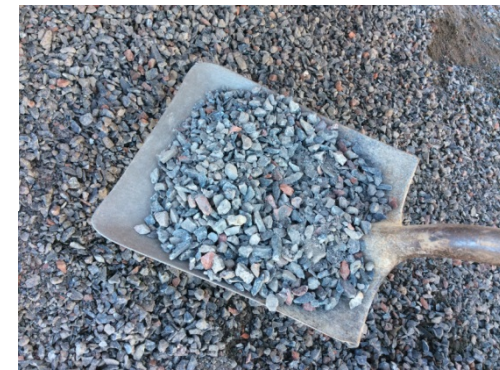


Addendum:

Northwest region

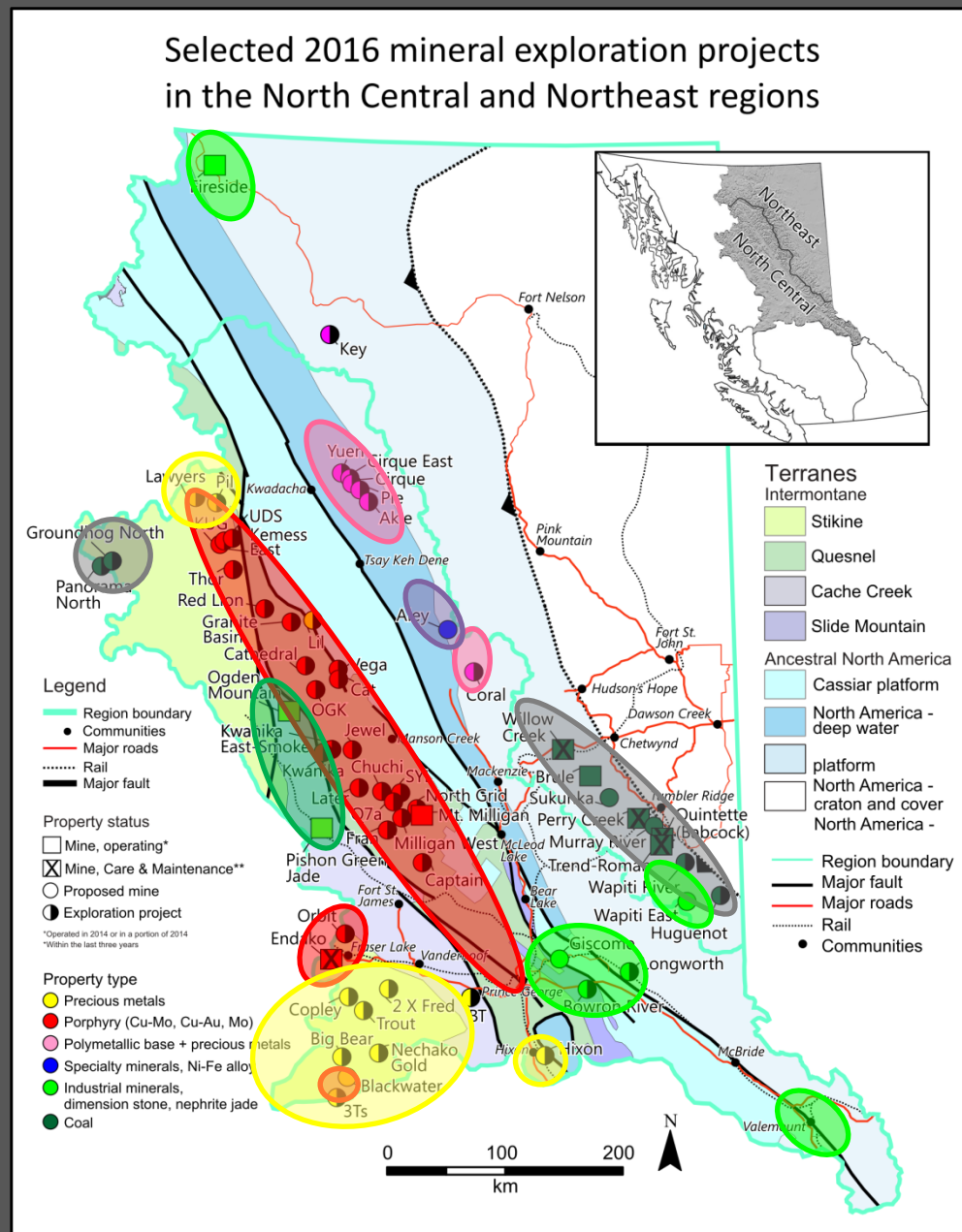
South Central region (Cariboo district)

- 1) selected proposed mines 2016-17 review

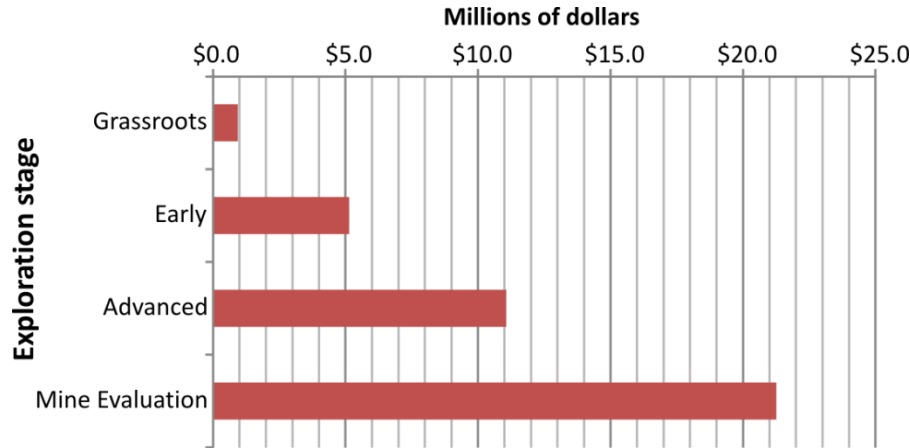


Mineral deposit types mined and/or explored for in NC-NE 2016

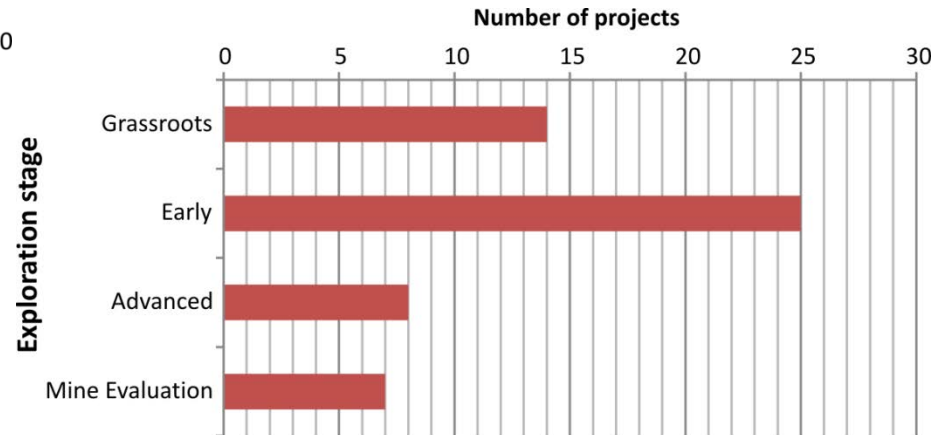
- Epithermal gold-silver & gold vein
- Porphyry copper-gold \pm Ag \pm Mo
- Porphyry molybdenum \pm Cu
- Sediment-hosted zinc-lead \pm Ag
- Niobium \pm REE (specialty metals)
- Nephrite jade
- Barite veins
- Phosphate rock
- Limestone, Dimension stone
- Med volatile bituminous coal
- Anthracite coal



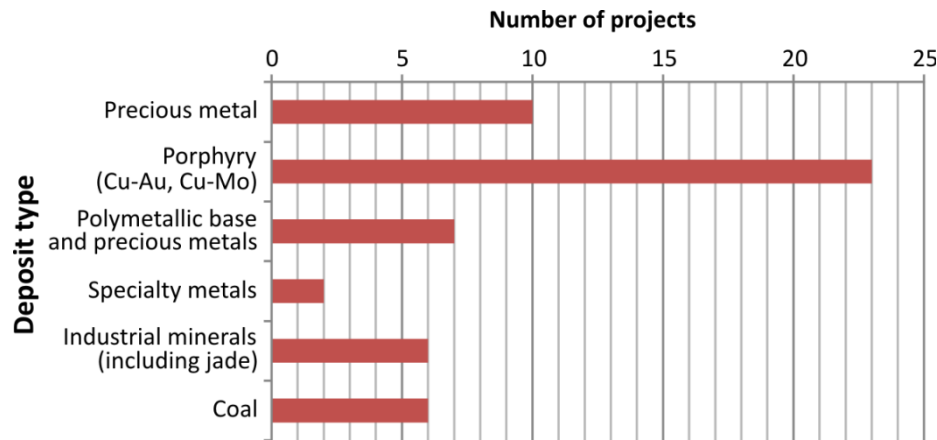
Mineral exploration statistics by exploration stage, NC-NE 2016



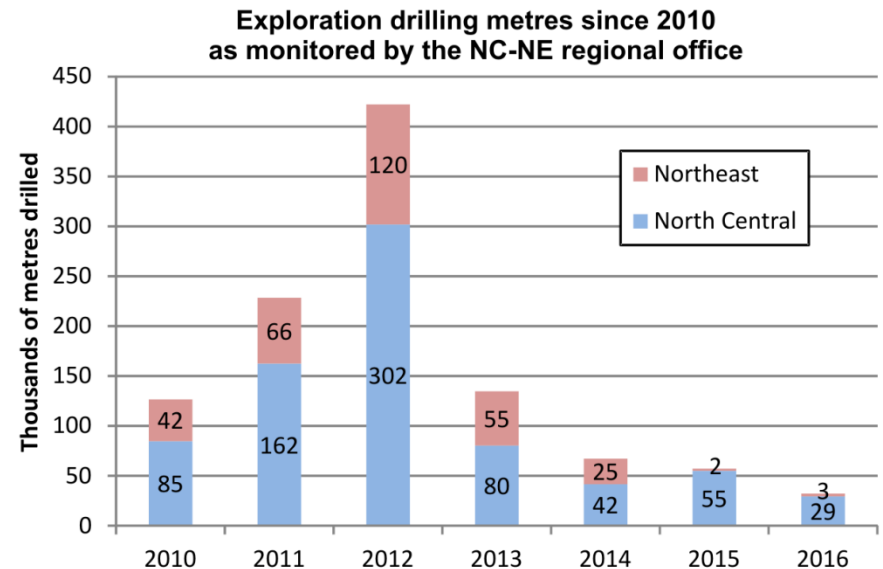
2016 exploration expenditure by stage for the combined North Central-Northeast region (as monitored from regional office)



2016 selected projects by stage for the combined North Central-Northeast regions (54 projects total)



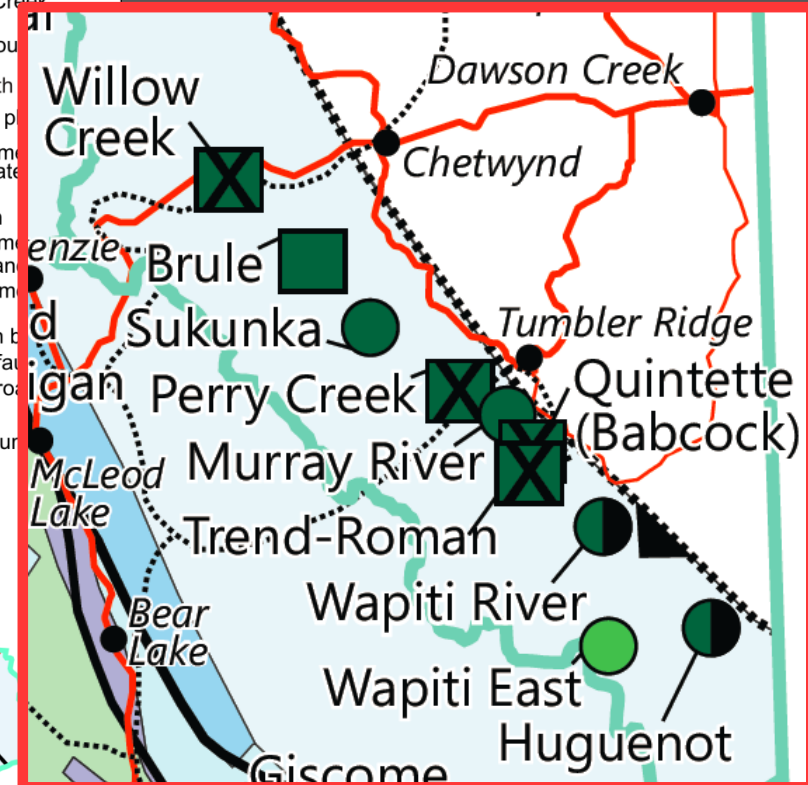
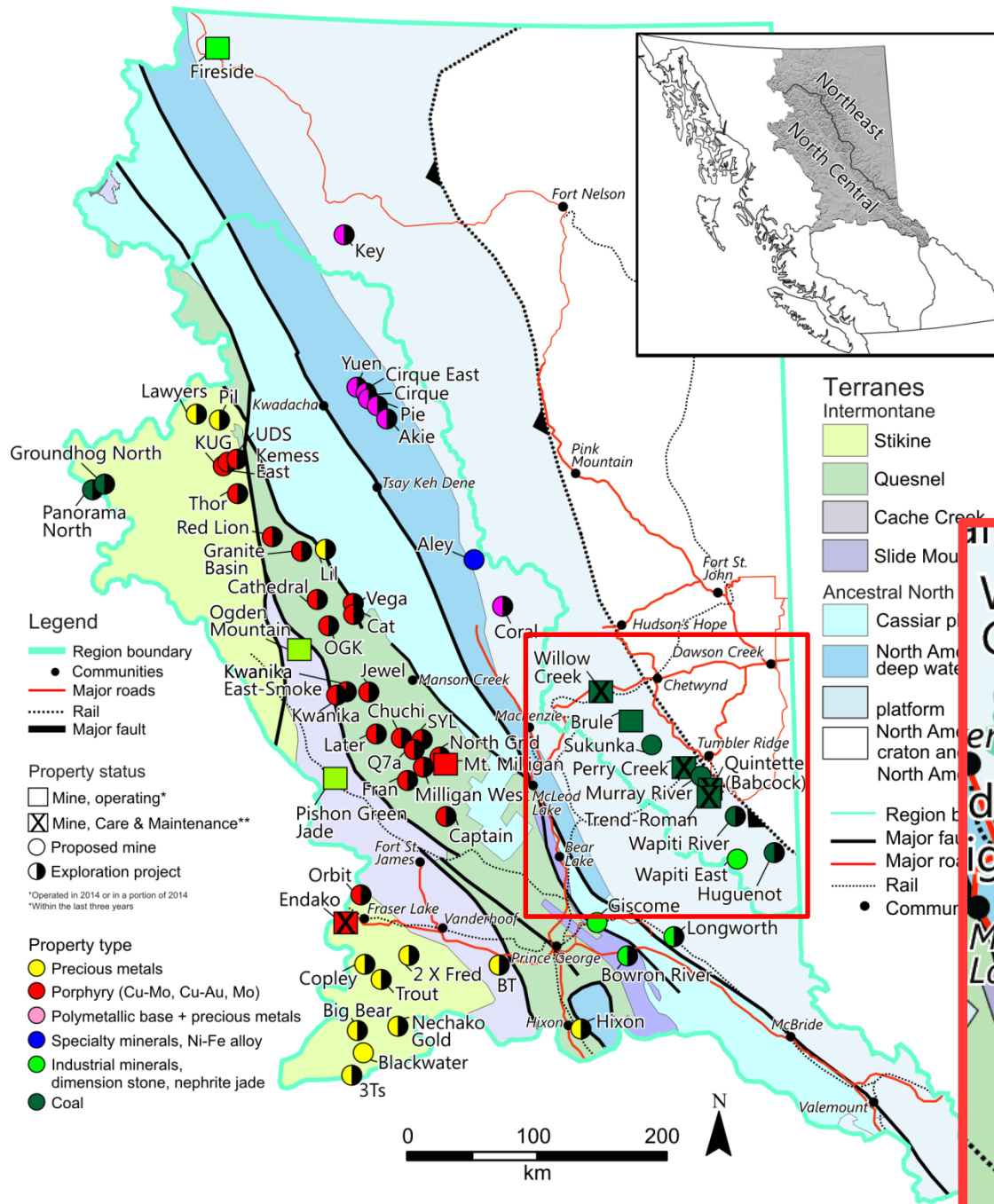
2016 selected projects by deposit type for the combined North Central-Northeast regions (54 projects total)

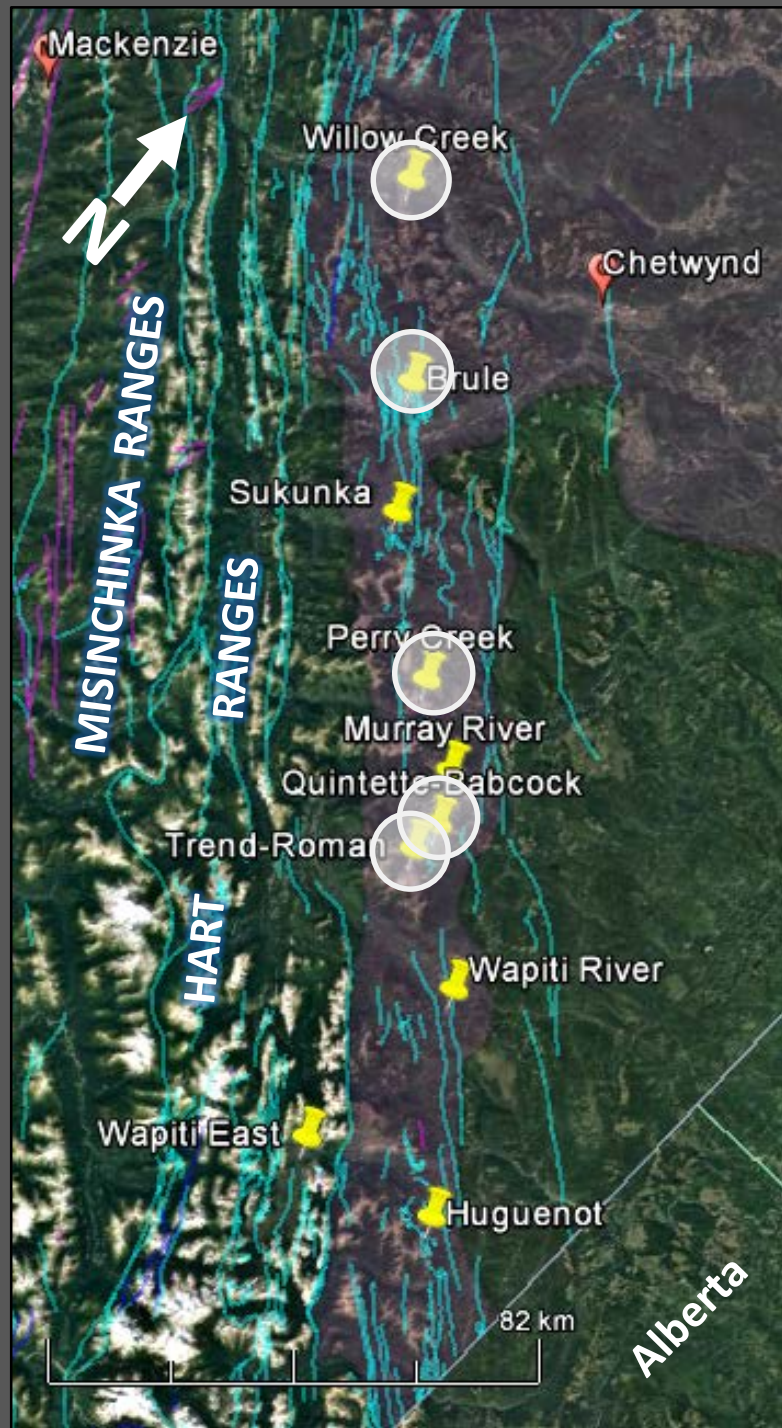


Northeast Region

Peace River Coalfield

Western Canada Sedimentary Basin:
Lower Cretaceous coal bearing
Gething Fm. (Bullhead Gp.) and
Gates Fm. (Fort St. John Gp.)





Peace River Coalfield mines

- five **metallurgical coal** mines (and mine developments) idled and placed on Care & Maintenance in 2013/14
- Aug. 2016 - asset purchase agreement signed between Walter Energy Canada Holdings, Inc. and Conuma Coal Resources Limited

Willow Creek - Conuma Coal Resources Ltd.

- hard coking coal (33.3%) and PCI coal (66.6%)
- 0.87 Mt (2012) saleable coal production - 16.6 Mt reserve
- mid 2017 potential restart - over 200 jobs - 16+ yr mine life

Brule - Conuma Coal Resources Ltd.

- PCI coal - 1.02 Mt saleable coal prod (2014) - 16.3 Mt reserve
- Sept 2016: ramp-up began for full production by Dec 2016
- Nov 2016: first trainload shipped - 170 jobs - 8 yr mine life

Perry Creek (Wolverine) - Conuma Coal Resources Ltd.

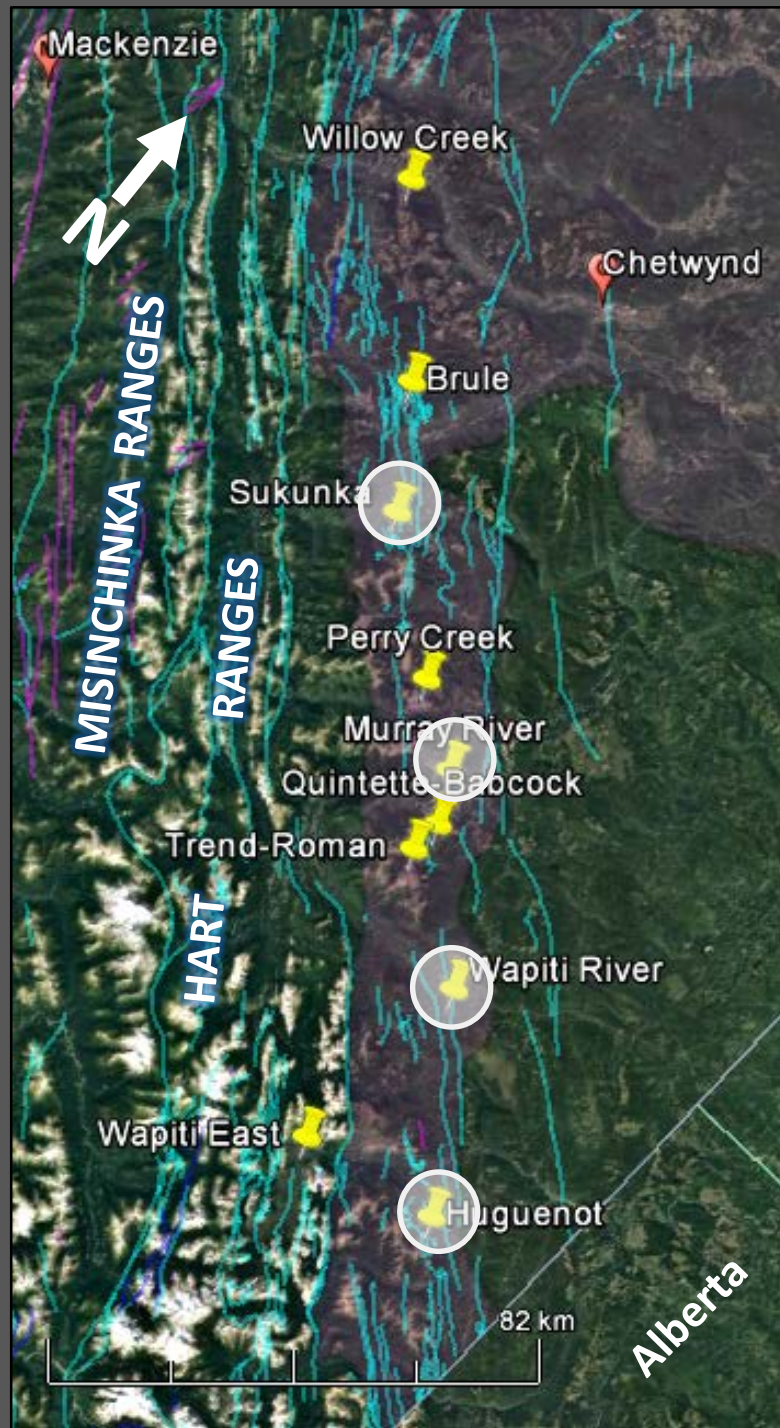
- hard coking coal - 1.8 Mt saleable coal (2013) - 8.8 Mt reserve
- Jan 2017: ramp-up began for full production by Apr 2017
- planned 1.5 Mt saleable coal (2017) - 220 jobs - 4 yr mine life

Quintette (Babcock) - Teck Coal Limited

- fully permitted in 2014 for 3.5 Mt/y saleable coal for 12 yrs
- 39.1 Mt saleable coal reserve - 2016 remained on C&M status

Trend-Roman - Anglo American plc (Peace River Coal Inc.)

- Roman fully permitted in 2014 - 25.8 Mt saleable coal reserve
- planned 2.5 Mt/y saleable coal for 16 yrs - 2016 on C&M



Peace River Coalfield

mine evaluation & advanced stage projects

- Two mine evaluation stage metallurgical coal projects, **Murray River** and **Sukunka**
- Two advanced stage projects, **Wapiti River** and **Huguenot**

Sukunka - *Glencore plc (75%), JX Nippon Oil & Energy Corp.*

- proposed open-cut mine
- 1.5 - 2.5 Mt/y of saleable coal for 20+ yrs - 145 Mt resource (M&I)
- 6 Mt/y potential with future UG mining component
- substituted environmental assessment (under review)
- 2016: open-cut & UG engineering studies, environ. studies

Murray River - *HD Mining International Ltd.*

- proposed underground longwall mine - \$688 M capex (2014)
- 4.8 Mt/y saleable coal for 25 yrs - 261.6 Mt mineable reserve
- Mines Act permit and federal EA (under review)
- Dec 2015: UG bulk coal sample program completed
- 2016: drilling (geotechnical), hand trenching, 2D seismic survey, engineer. & environ. studies

Wapiti River - *Canadian Dehua Int'l Mines Group Inc.*

- Jan 2016: updated NI 43-101 technical report results
- 562.6 Mt coking coal resource (M&I)
- 3-level underground longwall mine envisioned
- 10 Mt/y coal production for nearly 47 yrs

Huguenot - *Colonial Coal International Corp.*

- 2016: baseline environmental studies continuing
- surface and underground longwall mine (PEA, 2013) envisioned
- avg. 3.0 Mt/y saleable coal for 31 yrs - 277.7 Mt resource (M&I)



Brule - Upper Seam PCI coal, 1105 bench, South Pit north wall



Trend-Roman - completed Phase-1 mining area with Phase-2 causeway access to Roman expansion behind



Murray River - view SSE across South Decline site towards the Big Windy pit on **Mt. Babcock (Quintette)**



Sukunka - Skeeter seam, Nose pit area

Peace River Coalfield area mine evaluation stage

Industrial mineral phosphate (fertilizer)

- Middle Triassic phosphorite-bearing siltstones of the Sulphur Mountain Fm. (Spray River Gp.)

Wapiti East - *Fertoz International Inc.*

- proposed seasonal shallow open-cut mine
- <75,000 t/y phosphate rock for 20+ yrs
- 0.81 Mt at 22.3% P_2O_5 (Ind.) stratiform resource
- Mines Act application being assessed by regional MEM office
- 2016: linkage road construction, bulk sample collection
- organic certification for direct application fertilizer product
- 2017: continued bulk sampling

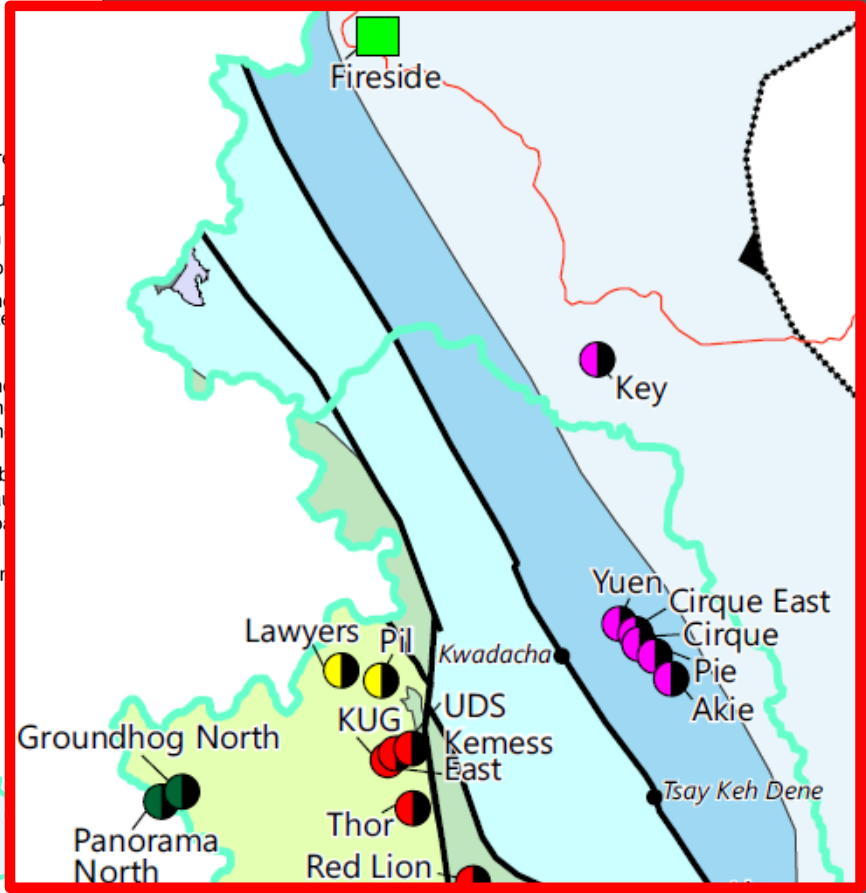
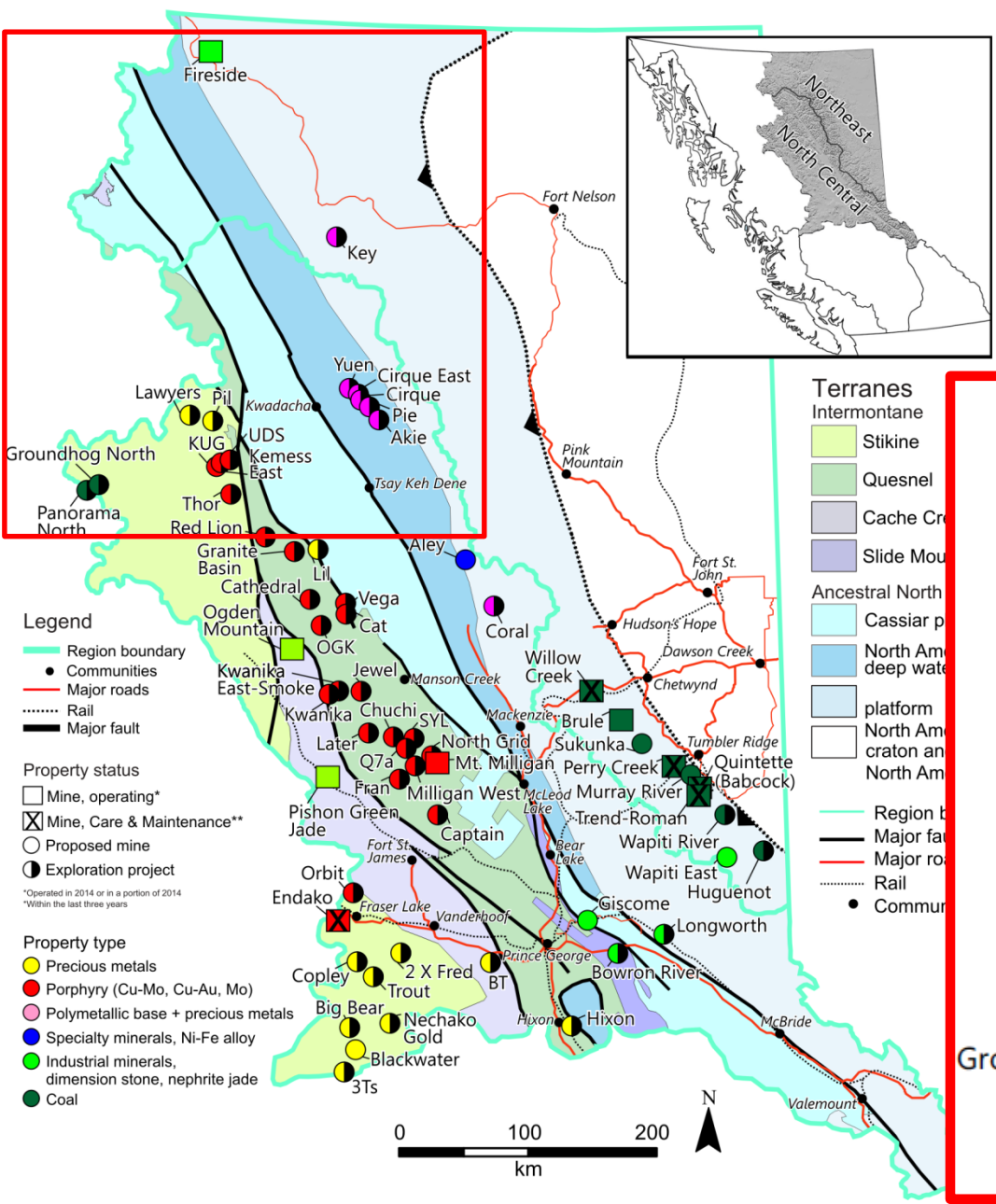


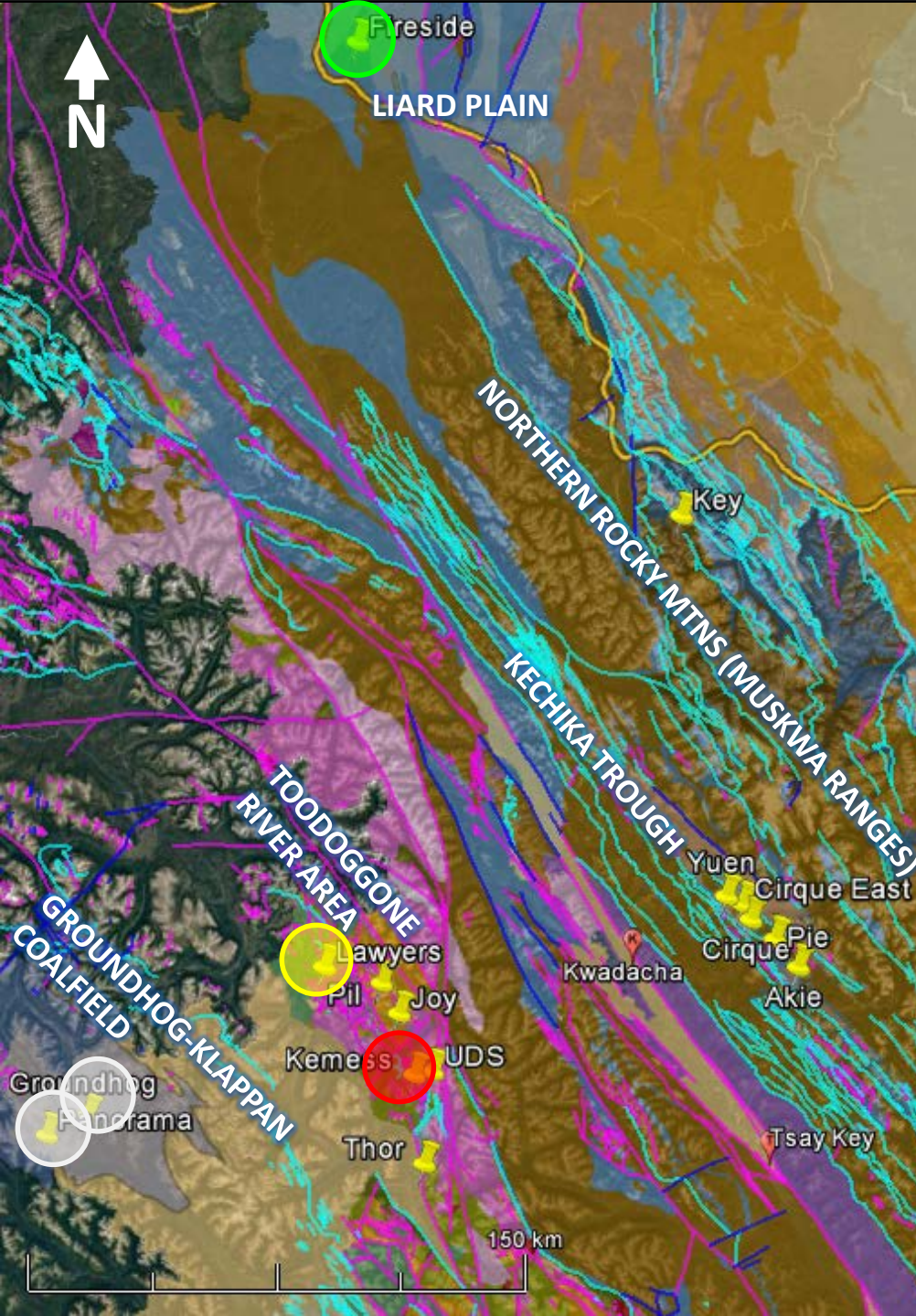
Wapiti East - bulk sampling (17,500 t permitted)
phosphate rock, photo courtesy of Fertoz Ltd.



NC-NE region

- Liard Plain
- Groundhog Coalfield
- Toodoggone River area
- Kechika trough





Fireside - Fireside Minerals Ltd.

- 2016: 10 Kt barite mined from Moose pit
- 475 Kt reserve (non NI 43-101 compliant)
- on-lease grassroots exploration continuing
- sold as drilling fluid additive in AB energy sector

Groundhog North - Atrum Coal NL

- 2016: revised prefeasibility study (staged approach)
- Ph. 1 <880 Kt/y saleable anthracite coal
- washability tests, engin. & environ. studies
- permit approval for <100 Kt UG+sfc bulk sample & special use of existing railbed subgrade

Panorama North - Atrum Coal NL

- Aug. 2016: entered into JV with JOGMEC
- Oct. 2016: 4-hole drilling program (1180 m)
- shallow coal seams intersected - 2.30 m thickest

Lawyers - PPM Phoenix Precious Metals Corp.

- NI 43-101 technical report released after 2015 drilling
- Cliff Creek North - 550 Kt at 4.5 g/t Au, 209.1 g/t Ag (Inf.)
- Duke's Ridge - 58 Kt at 4.3 g/t Au, 139.1 g/t Ag (Inf.)
- P2 Vein - 2.40 m at 87.04 g/t Au, 2,407 g/t Ag
- Geoscience BC - porphyry-to-epithermal transition

Kemess Underground - AuRico Metals Inc.

- 2016: feasibility study update
- proposed 24,600 t/d UG panel cave for 12 yrs
- LOM production: 573 Mlbs Cu, 1.4 Moz Au, 4.5 Moz Ag
- 200 - 500 m below surface mineralization
- 107.4 Mt reserve within a 246.4 Mt resource (Ind.)
- reuse infrastructure from Kemess South mine
- Mar 2017: EA certification received (Prov & Fed)
- eng. and environ. studies continuing
- C\$604 M pre-commercial capex - 4 year construction



Fireside
mining massive barite vein

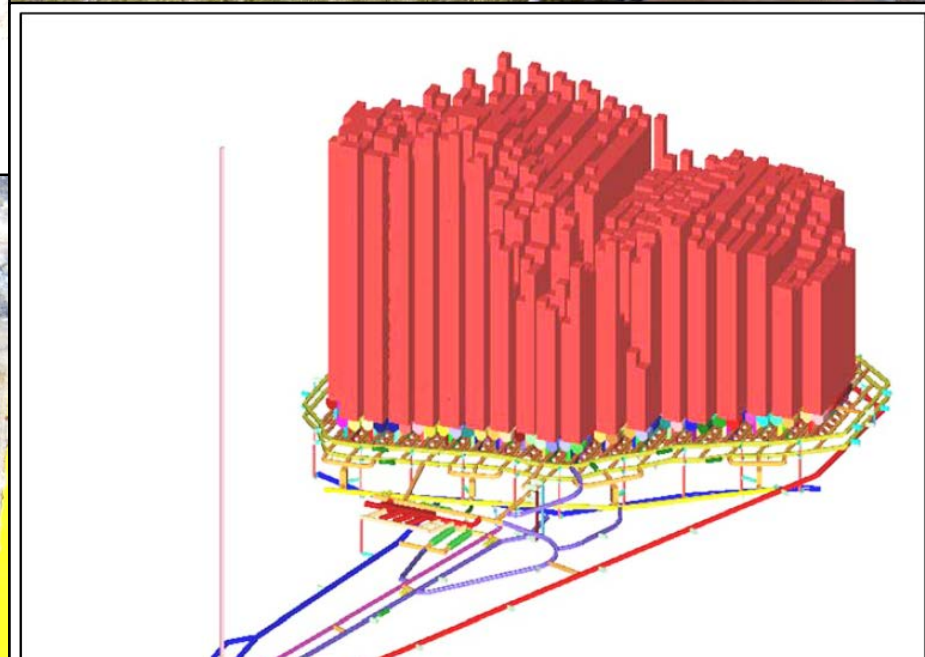


Lawyers
mineralized vein grab sample

CM

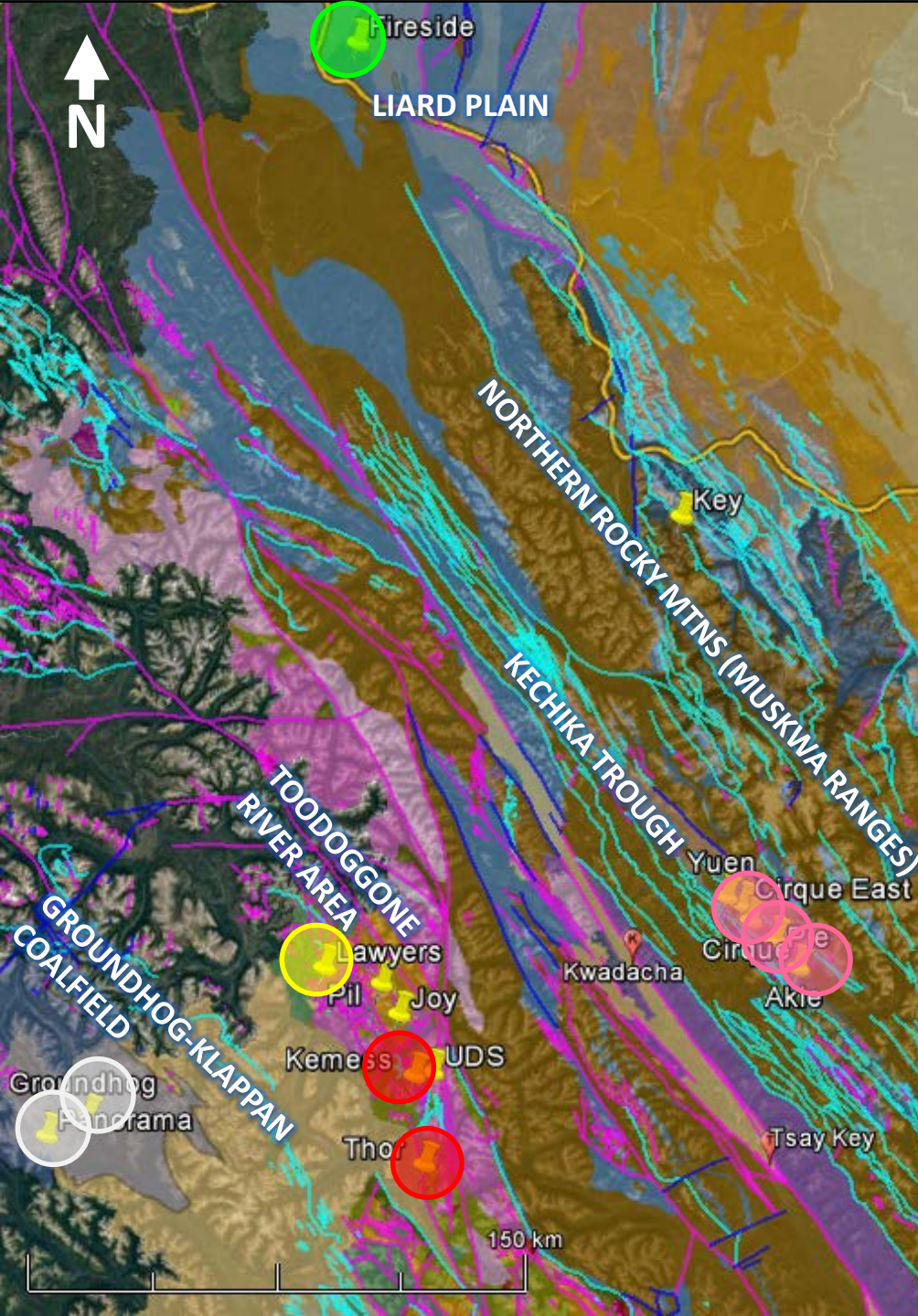


Panorama North
drilling for anthracite coal



Kemess Underground - UG panel cave model
Reserve:
107.38 Mt at 0.27% Cu, 0.54 g/t Au, 1.99 g/t Ag
= 629.6 Mlbs Cu, 1.87 Moz Au, 6.88 Moz Ag (Prob)

(Source: SRK, 2016)



Kemess East - AuRico Metals Inc.

- 2016: resource estimate update
- high-grade core of 67.2 Mt at 0.43% Cu, 0.60 g/t Au within a 113.1 Mt resource (Ind.) - 188% increase 2016
- core drilling (13 holes, 13,544 m) infill & expansion
- KH-16-13: 628 m at 0.53 g/t Au, 0.41 % Cu, 2.07 g/t Ag
- 900 - 1600 m below surface mineralization
- may be single dissected system that includes KUG

Thor - Copper North Mining Corp.

- 2016: Thor East drilling
- 107.60 m at 0.14% Cu, 0.045 g/t Au
- Thor West - 4 x 2 km IP+mag geophysical anomaly

Akie - Canada Zinc Metals Corp.

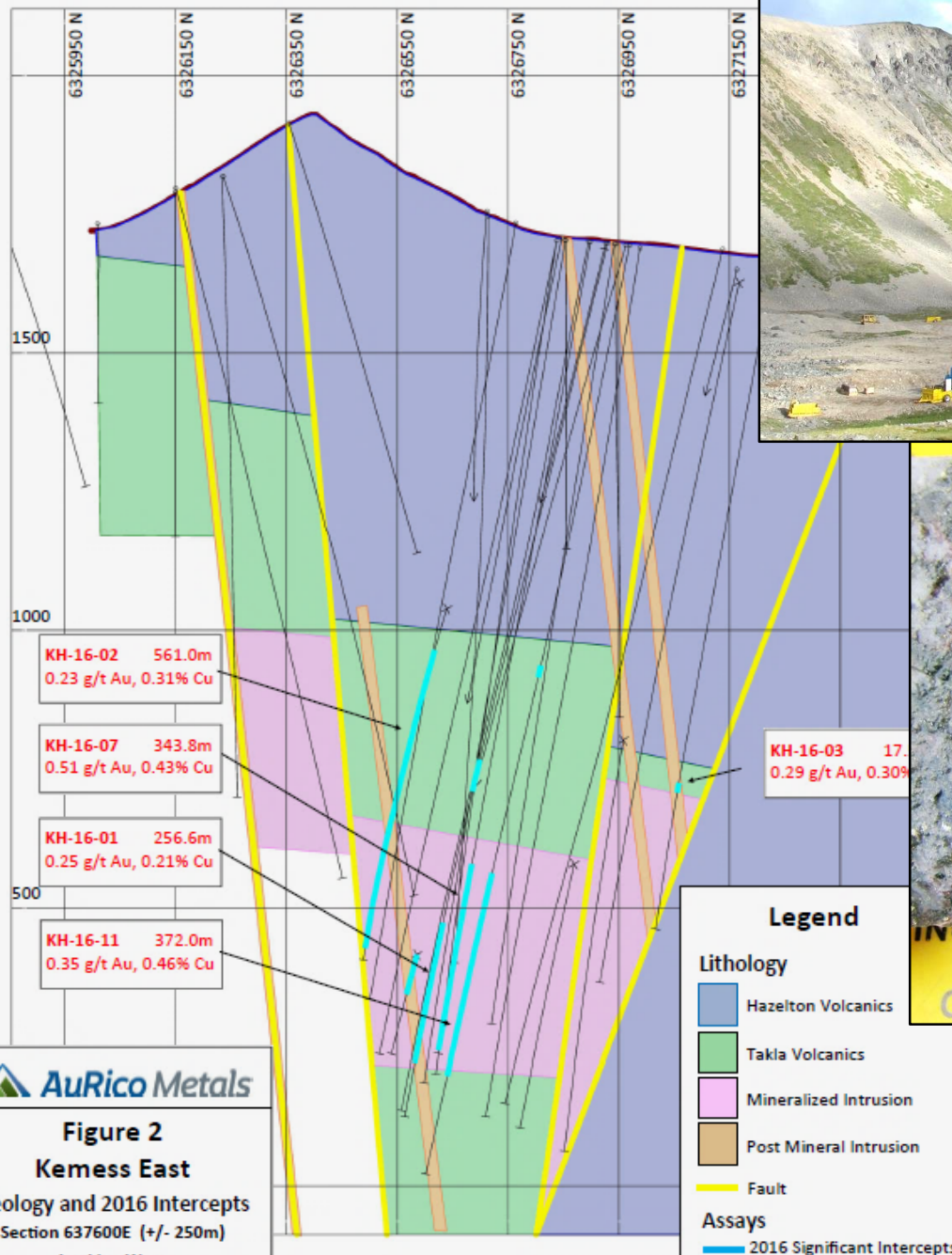
- 2016: NI 43-101 technical report update
- 19.6 Mt at 8.17% Zn, 1.58% Pb, 13.6 g/t Ag (Ind.)
= 3,540 Mlbs Zn, 685 Mlbs Pb, 8.6 Moz Ag
- 2017: <7500 m drilling on Cardiac Ck + other targets
- 1.3 km x 800+ m, <35 m thick, mod SW dip ore body

Cirque - Teck Resources Ltd., Korea Zinc Co. Ltd.

- 2016: drilling (495 m), R-Creek target (North Cirque area)
- processing/interp of airborne & ground gravity data
- mapping, prospecting
- 28.38 Mt at 7.85% Zn, 2.17% Pb, 46.8 g/t Ag (North Cirque); ind. & inf. (Teck Corporation, 1995)
- 1 km x 300+ m, <60 m thick, mod SW dip ore body

Pie Option - Teck Resources Ltd., Korea Zinc

- 2016: five priority target areas (Pie & Yuen properties)
- drilling (1080 m) - down-dip of Pie Main area
- ground geophysics (gravity)
- geochem sampling (rock, soil), mapping, prospecting



Kemess East

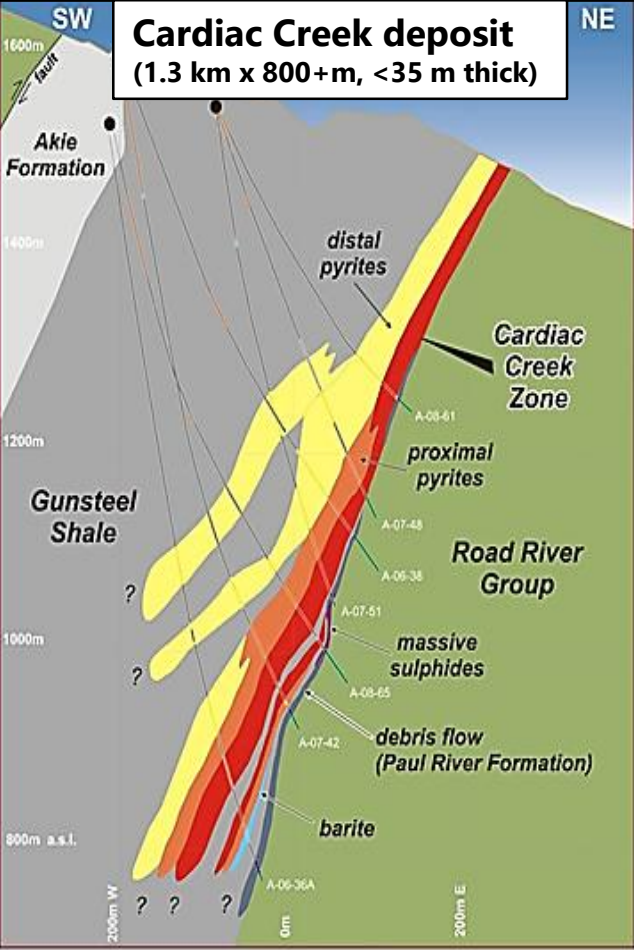
628 m at 0.53 g/t Au, 0.41% Cu (KH-16-13)

549 m at 0.55 g/t Au, 0.41% Cu (KH-16-12)

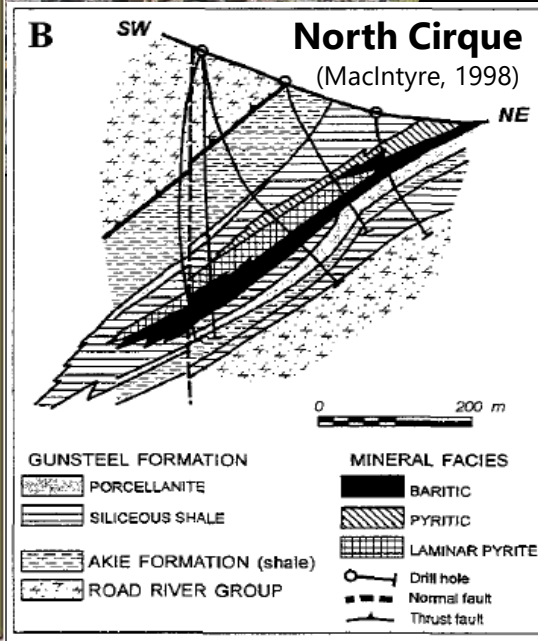
Resource (Ind.) - 188% increase YOY

- 113.1 Mt at 0.38 % Cu, 0.46 g/t Au, 1.94 g/t Ag
= 954 Mlbs Cu, 1.68 Moz Au, 7.07 Moz Ag

Akie

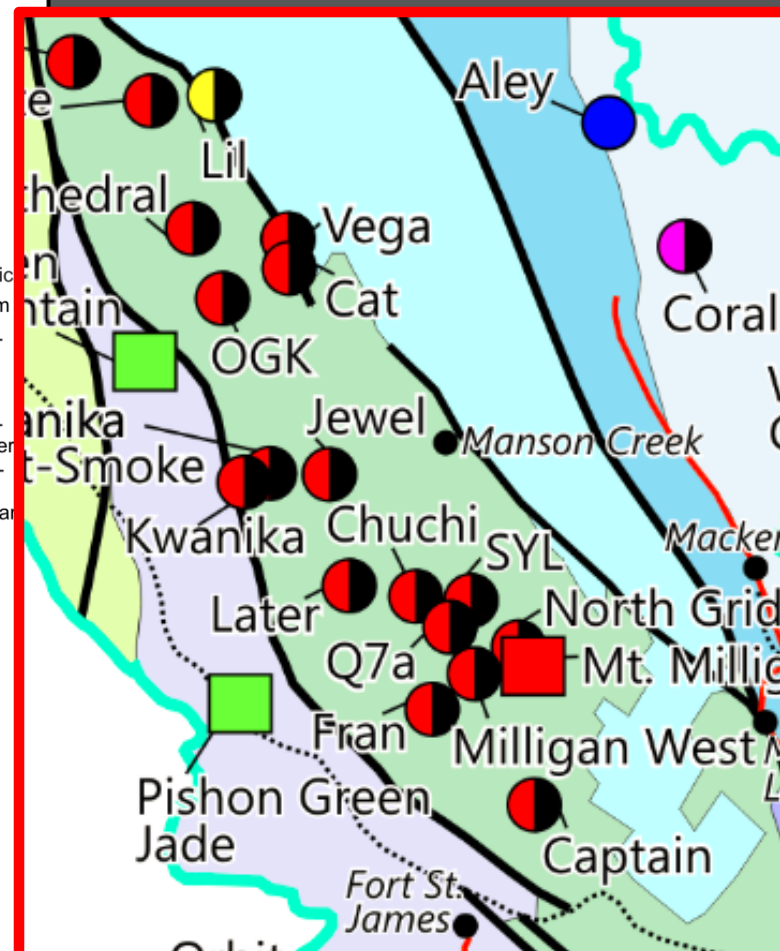
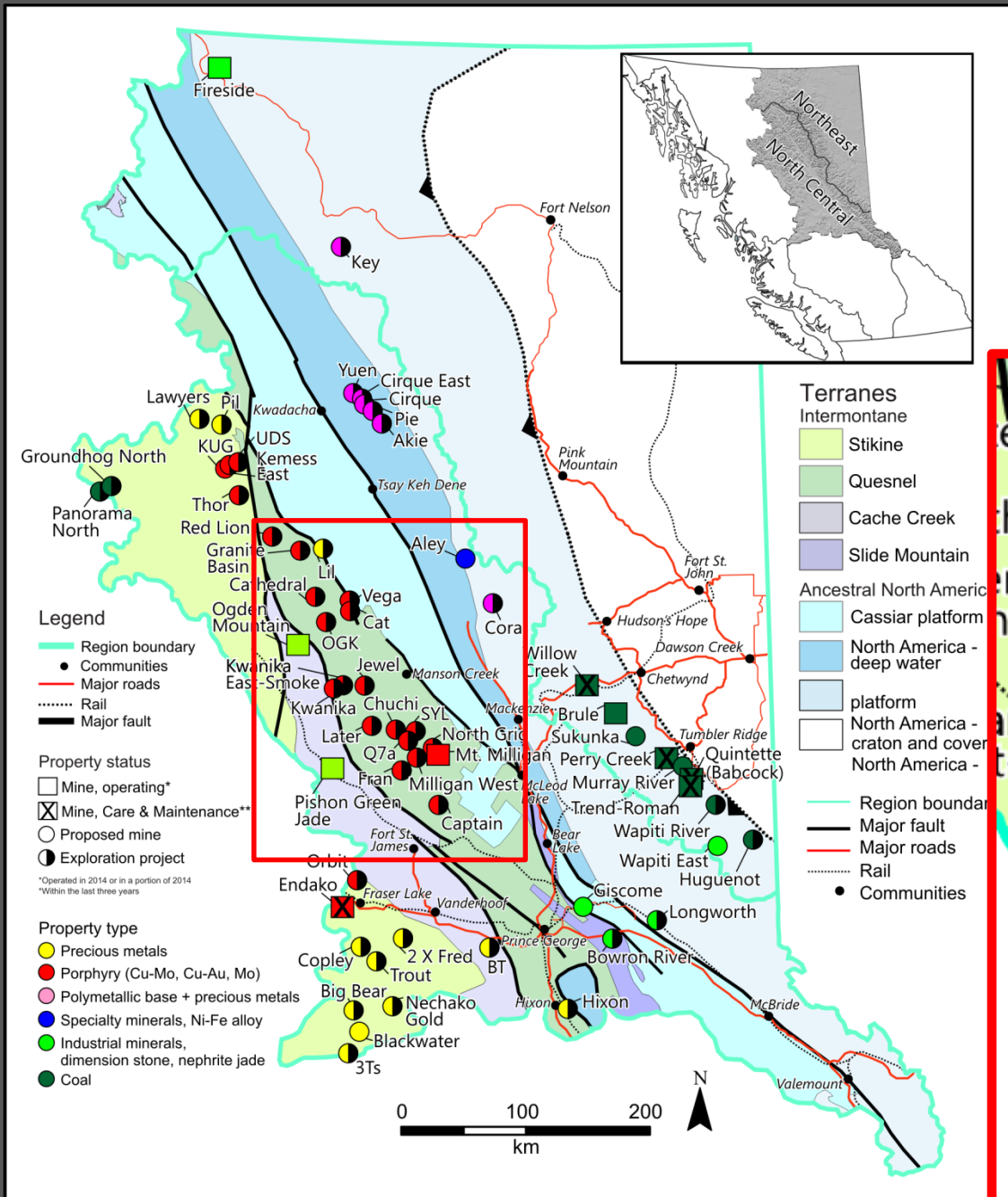


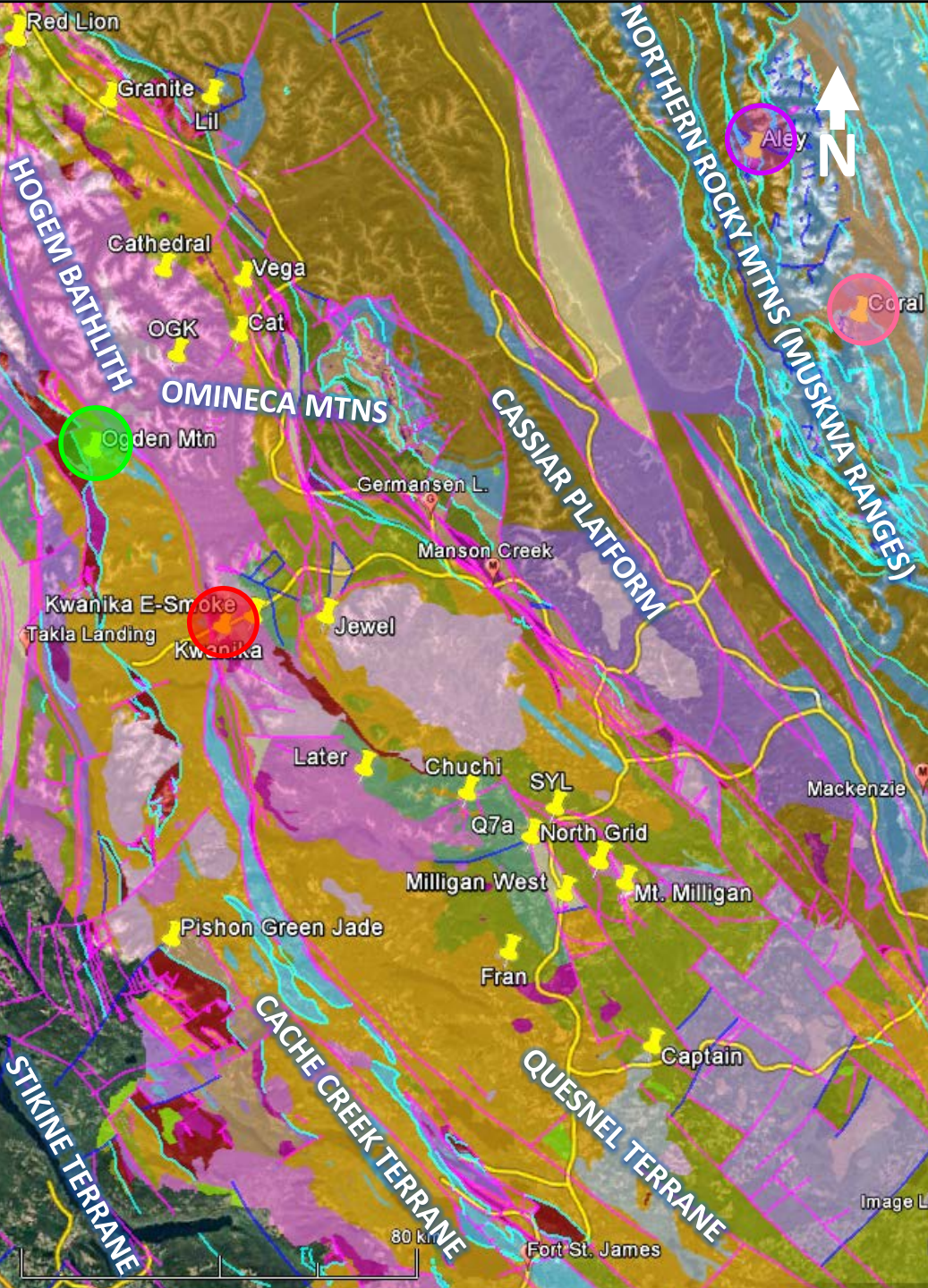
Cirque and Pie Option (Pie, Cirque East, Yuen)



NC region

- Muskwa ranges
- Cache Creek terrane
- Quesnel terrane





Aley- Taseko Mines Limited (Aley Corporation)

- proposed open-pit mine & processing plant with ferroniobium convertor - \$870 M capex
- 10,000 t/d processing - avg. 9 Kt/y niobium for 24 yrs
- reserve: 83.8 Mt at 0.50% Nb_2O_5 = ~293 Kt Nb
- 2016: Environ. Assessment (pre-appl.)
- geochem. characterization & environ. baseline work
- alkaline ultrabasic Aley carbonatite complex

Coral - Minfocus Exploration Corp.

- 2016: core drilling - two targets across 500 m strike
- 1.1 m at 2.47% Zn and 4.0 m at 0.97% Zn (C16-09)
- geochem. sampling - new mineralization in outcrop
- Mississippi Valley-type Zn-Pb prospect

Ogden Mtn - Green Mountain Jade Inc.

- partner of Jade West Group
- 2016: in situ nephrite jade excavation (35+ t)
- exploration & placer mining of alluvial jade boulders

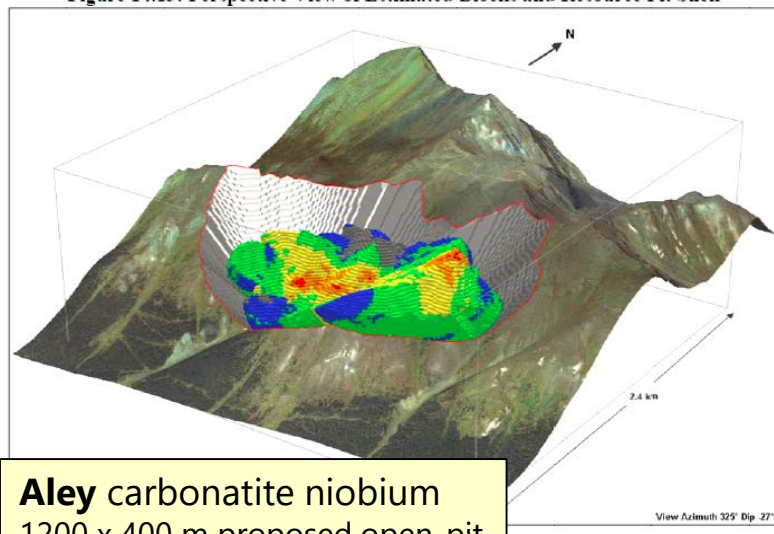
Kwanika - Serengeti Resources Inc. (95%), Daewoo Minerals Canada Corp.

- 2017: PEA update for proposed open-pit & UG mine
- 15,000 t/d processing for 15 yrs - \$476 M capex
- LOM = 600.6 Mlbs Cu, 676.3 Koz Au, 2.66 Moz Ag
- 2016: Central Zone drilling (3 holes, 2,446 m)
- 438 m at 0.71% Cu, 0.83 g/t Au, 2.0 g/t Ag (K-16-177)

Resource estimate update

- Central Zone pit (Ind.):
- 101.5 Mt at 0.31% Cu, 0.32 g/t Au, 0.96 g/t Ag,
= 697.2 Mlbs Cu, 1.04 Moz Au, 3.12 Moz Ag
- Central Zone UG (Ind.):
- 29.7 Mt at 0.34% Cu, 0.36 g/t Au, 1.05 g/t Ag,
= 222.3 Mlbs Cu, 350 Koz Au, 1.01 Moz Ag

Figure 14.13: Perspective View of Estimated Blocks and Resource Pit Shell



Aley carbonatite niobium
1200 x 400 m proposed open-pit

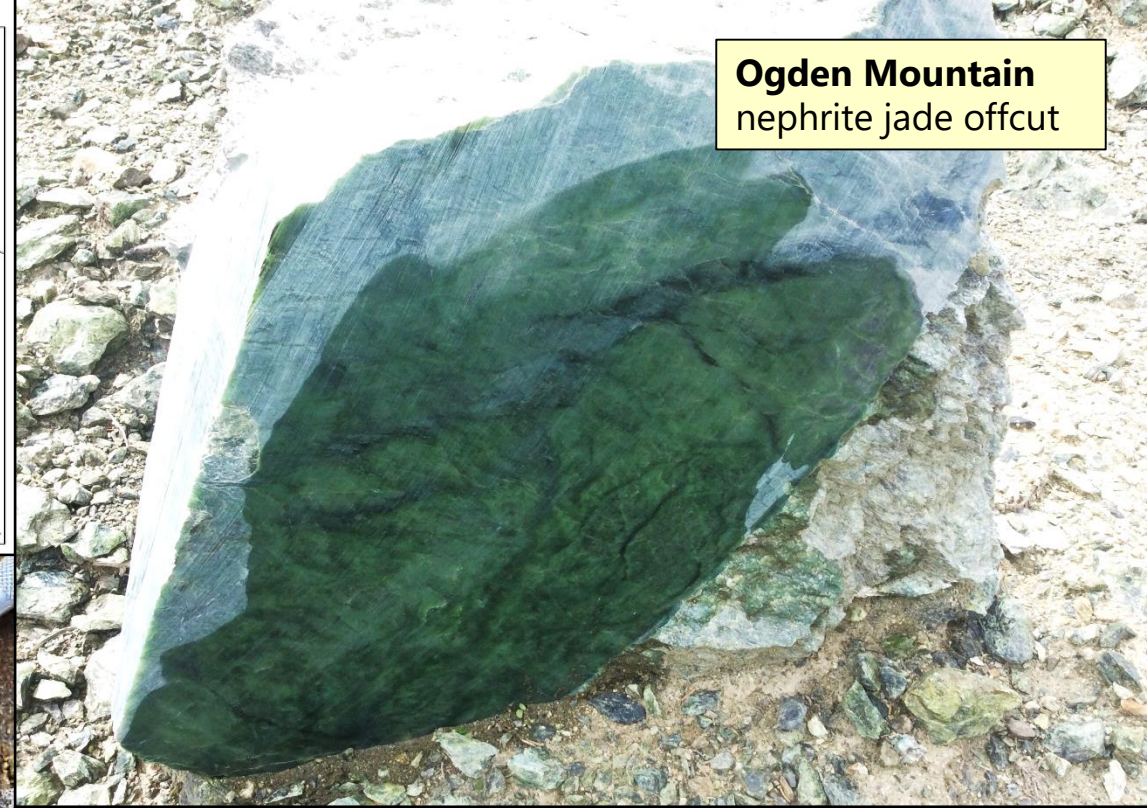


cumulate magnetite, apatite, phlogopite, Nb-oxides

Coral MVT
zinc-lead
deposit
prospect



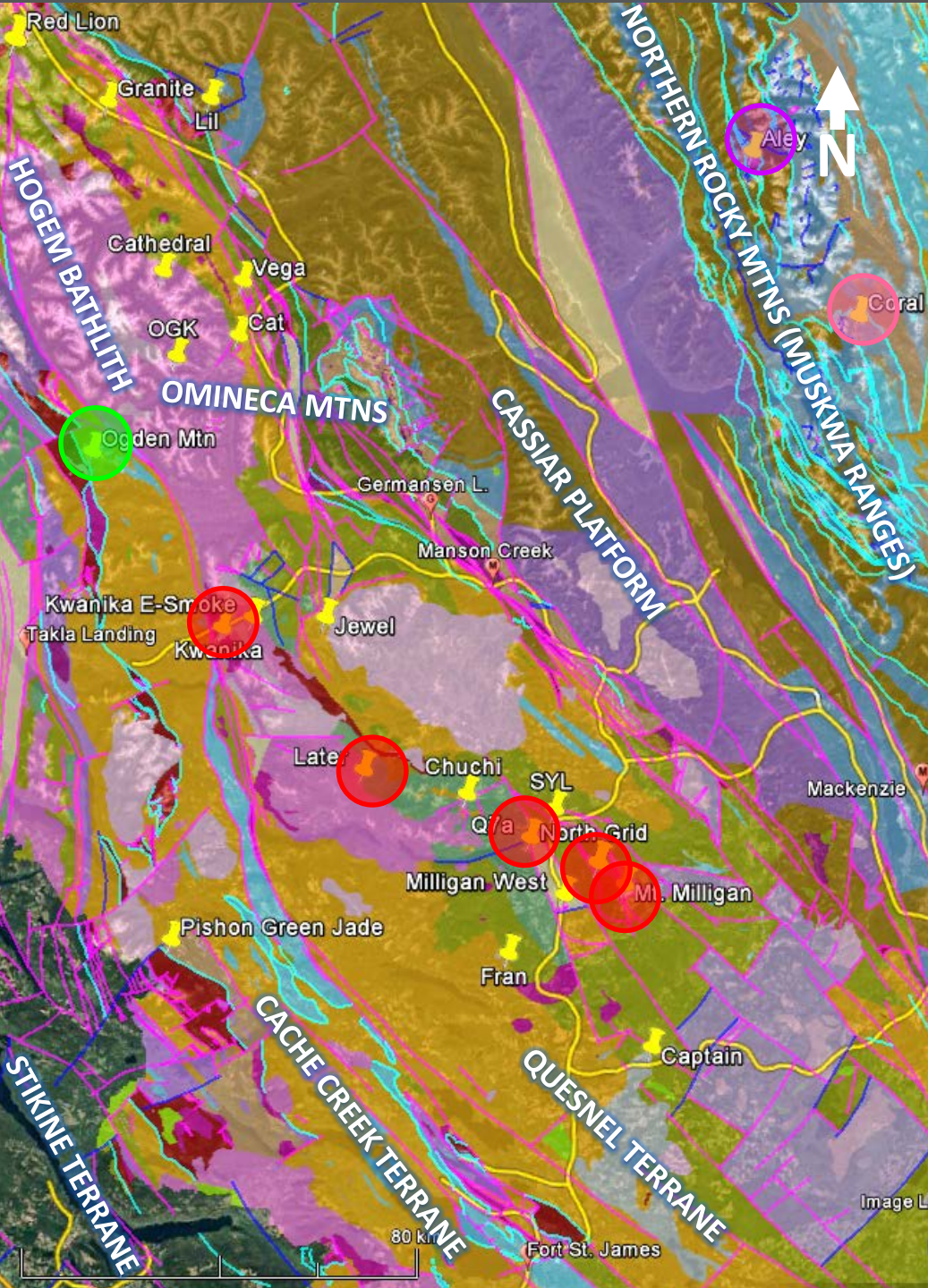
red sphalerite in dolostone breccia (11cm x 8cm sample)



Ogden Mountain
nephrite jade offcut



Kwanika Central Zone secondary copper (chalcocite) (K-16-177)



Later - ML Gold Corp.,

Pacific Empire Minerals Corp

- 2016: drilling (3 holes, 1,107m)
- 2-3 km scale geophysical anomaly (IP-res-mag)
- 41.3 m at 0.42 g/t Au (DD16 ELB007)
- 103.6 m at 0.14 g/t Au (DD16 ELB005)
- over 1600 m strike length elevated gold in area

Q7a - Vale Exploration Canada Inc.

- 2016: drilling (3 holes, 1101 m)
- geophysical target (IP-mag) over 800 m strike length
- historic core relogging - anomalous Cu-Au results

North Grid - Centerra Gold Inc.

(Thompson Creek Metals Co. Inc. to Oct '16)

- 5 km northwest of Mt. Milligan mine
- 2016: drilling (3 holes, 1101 m)
- two geophysical target areas (IP-mag; Mitzi & Snell)
- silicified & phyllic-altered breccia in Takla Gp

Mt. Milligan mine - Centerra Gold Inc.

(Thompson Creek Metals Co. Inc. to Oct '16)

- 2016: third full year of operation (since Sept-Oct 2013)
- Jan '16 - ramp-up complete (avg. 52,800 t/d Q1-Q3)
- 2016: 58.5 Mlbs Cu, 204.5 Koz Au produced
- mining in gold-rich 66 zone (Ph. 3-4 of mine plan)
- permanent secondary crusher constructed
- commissioned starting Oct '16.
- mill throughput to 62,500+ t/d
- optimize mine/mill ops - geometallurgy modelling
- Oct '16: US\$1.03 B acquisition of TCMC Inc.
- 22 yr mine life - 350+ employees

Q7a core logging



Mt. Milligan permanent secondary crusher construction



Mt. Milligan mining in the 66 zone, panorama view from 1055 bench

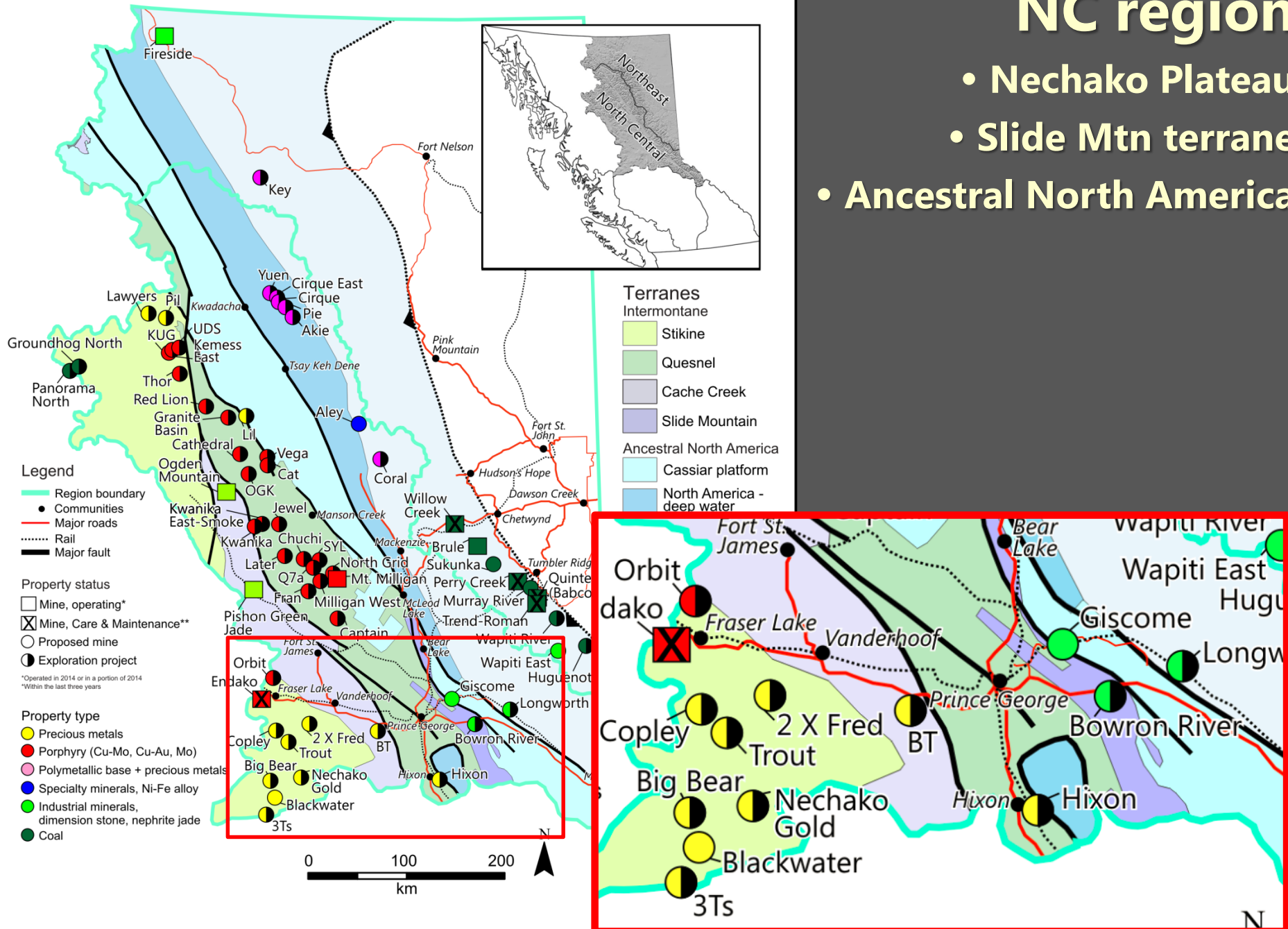


Reserves

- 496.2 Mt at 0.19% Cu, 0.36 g/t Au (P&P)
= 2.05 Blbs Cu, 5.76 Moz Au

NC region

- Nechako Plateau
- Slide Mtn terrane
- Ancestral North America



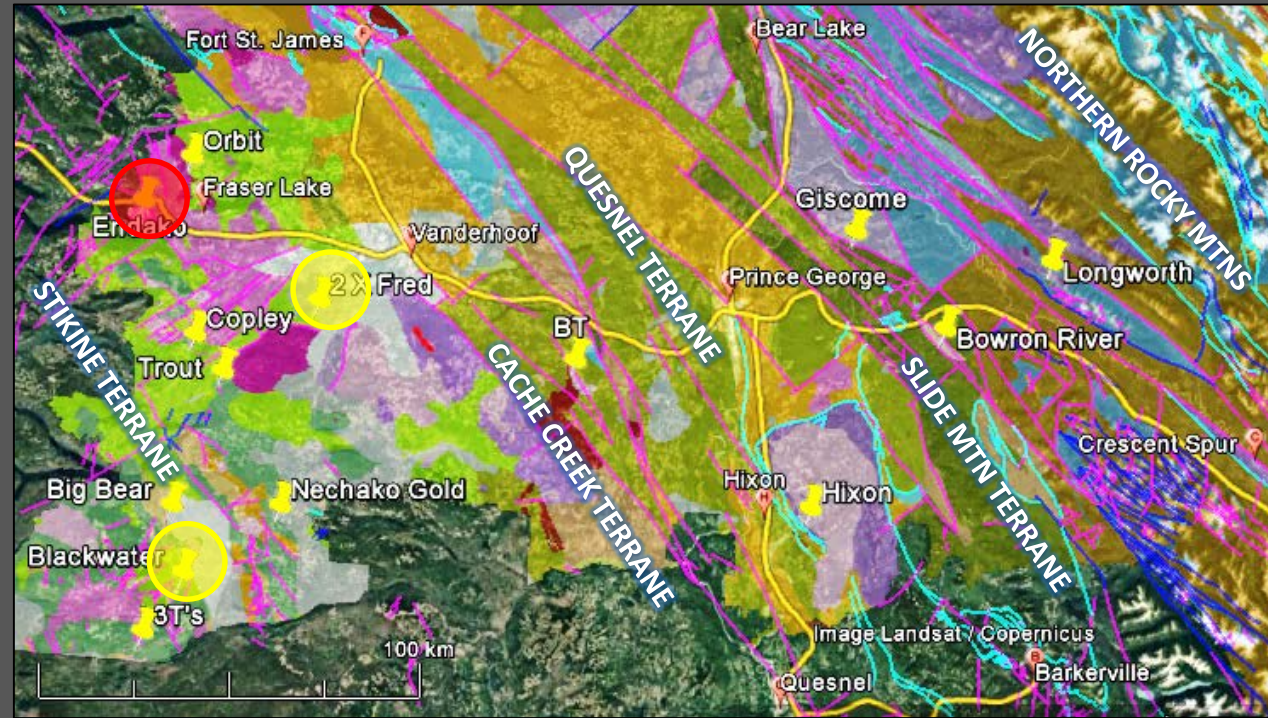
Endako - Centerra Gold Inc. (75%)

Sojitz Moly Resources, Inc.

- care & maintenance since July 2015
- Dec '15: reserve reclassified as resource
- 33.4 Mt at 0.049% Mo (M&I)
- = 36 Mlbs contained molybdenum

Blackwater - New Gold Inc.

- proposed open-pit mine
- annual avg. 413 Koz Au, 1.74 Moz Ag prod. for 17+ yrs - 60,000 t/d mill rate
- 344.4 Mt at 0.74 g/t Au, 5.5 g/t Ag;
= 8.17 Moz Au, 60.8 Moz Ag (P&P)
- 2016: EA (under review) -US\$7 M (Q1-Q3)
- engin. & environ. studies
- est. \$1,576 M development capex
- 500+ employees during ops



2 X Fred - Kootenay Silver Inc., Theia Resources Ltd.

- at least 6 shallow epithermal Au-Ag vein systems (3.0 x 1.4 km area)
- up to 500 m vein strike length, 30 m true width

Saki vein system (2015 drilling):

- 7.6 m at 1.69 g/t Au, 29.36 g/t Ag
- 67 m at 0.37 g/t Au and 7.22 g/t Ag

Gold Hill vein system:

- 24.4 m at 0.29 g/t Au, 7.70 g/t Ag

2016 sampling:

- 12.7 g/t Au, 4.4 g/t Au and 11.4 g/t Au
- sub-cropping veins north of 2015 drilling

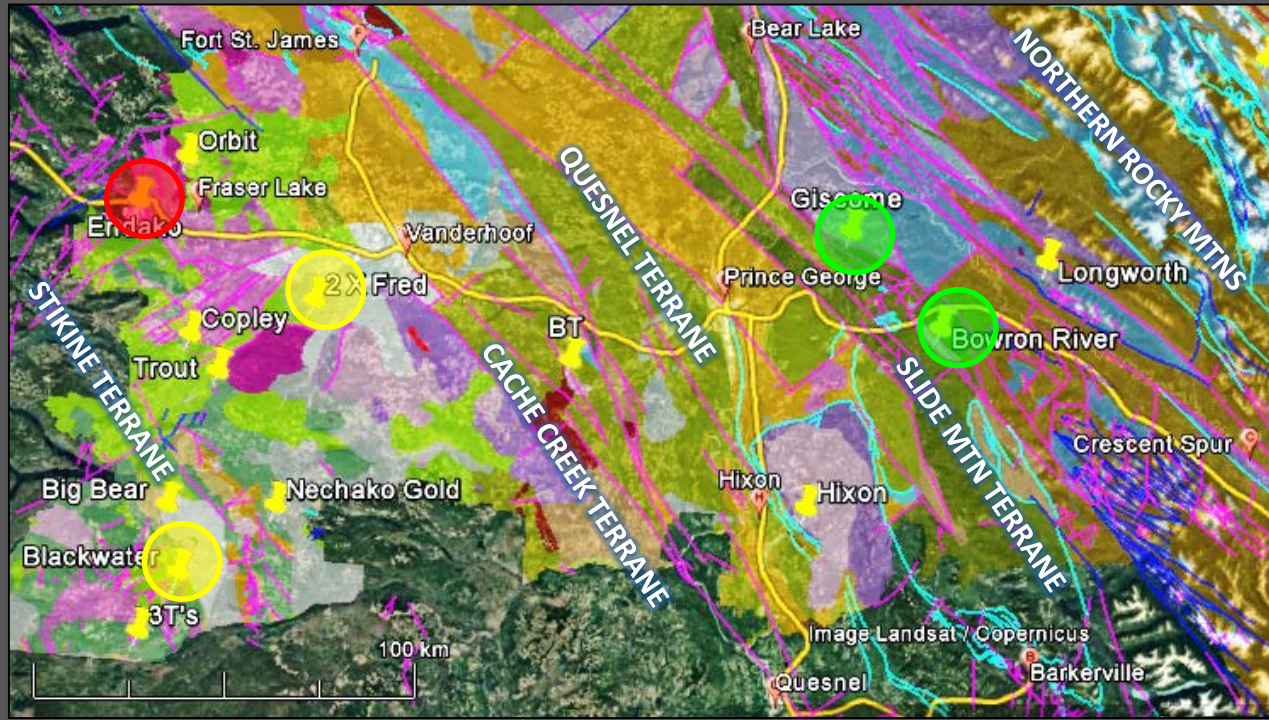


Giscome - Graymont Western Canada Inc.

- proposed 600,000 t/y limestone quarry
- feed a vertical lime kiln
- 198 Kt/y lime for 50+ yrs
- 100+ Mt high-purity limestone (Ind.)
- \$80-90 M capex - 15 jobs ops
- 2016 - Environ. Assess. (under review)
- hand auguring, baseline studies
- Dec 2016: EA Certificate issued

Bowron River - First Amber Mines Inc.

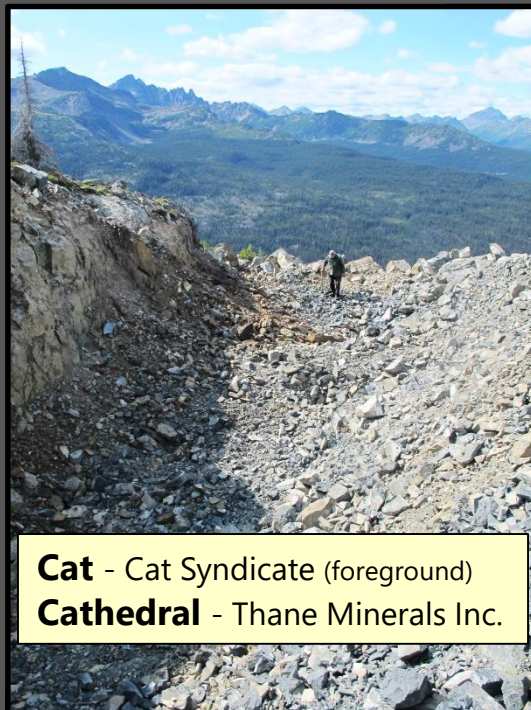
- Bowron River coalfield (Eocene)
- 2016: drilling (core, percussion RAB)
- 40 Mt high volatile B coal reserve (Norco Resources Ltd., March 1981)
- ~1% amber in coal & shaley partings
- collecting amber samples for test marketing



Concluding point - NC-NE active mineral exploration project count, year-on-year

2015: 38 active projects monitored

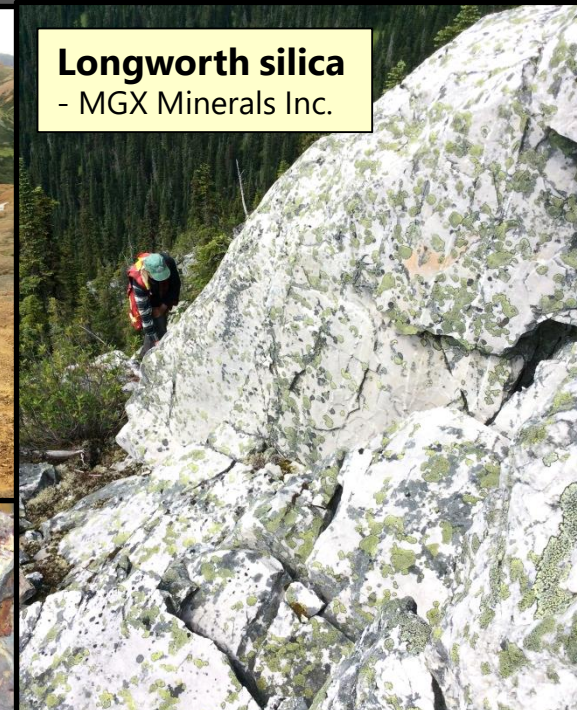
2016: 54 active projects (up 42%), increase in grassroots to early-stage exploration



Cat - Cat Syndicate (foreground)
Cathedral - Thane Minerals Inc.



Geoscience BC
- MDRU researchers



Longworth silica
- MGX Minerals Inc.



Pishon Green Jade
- private company



Nechako Gold
- Tower Resources Ltd.

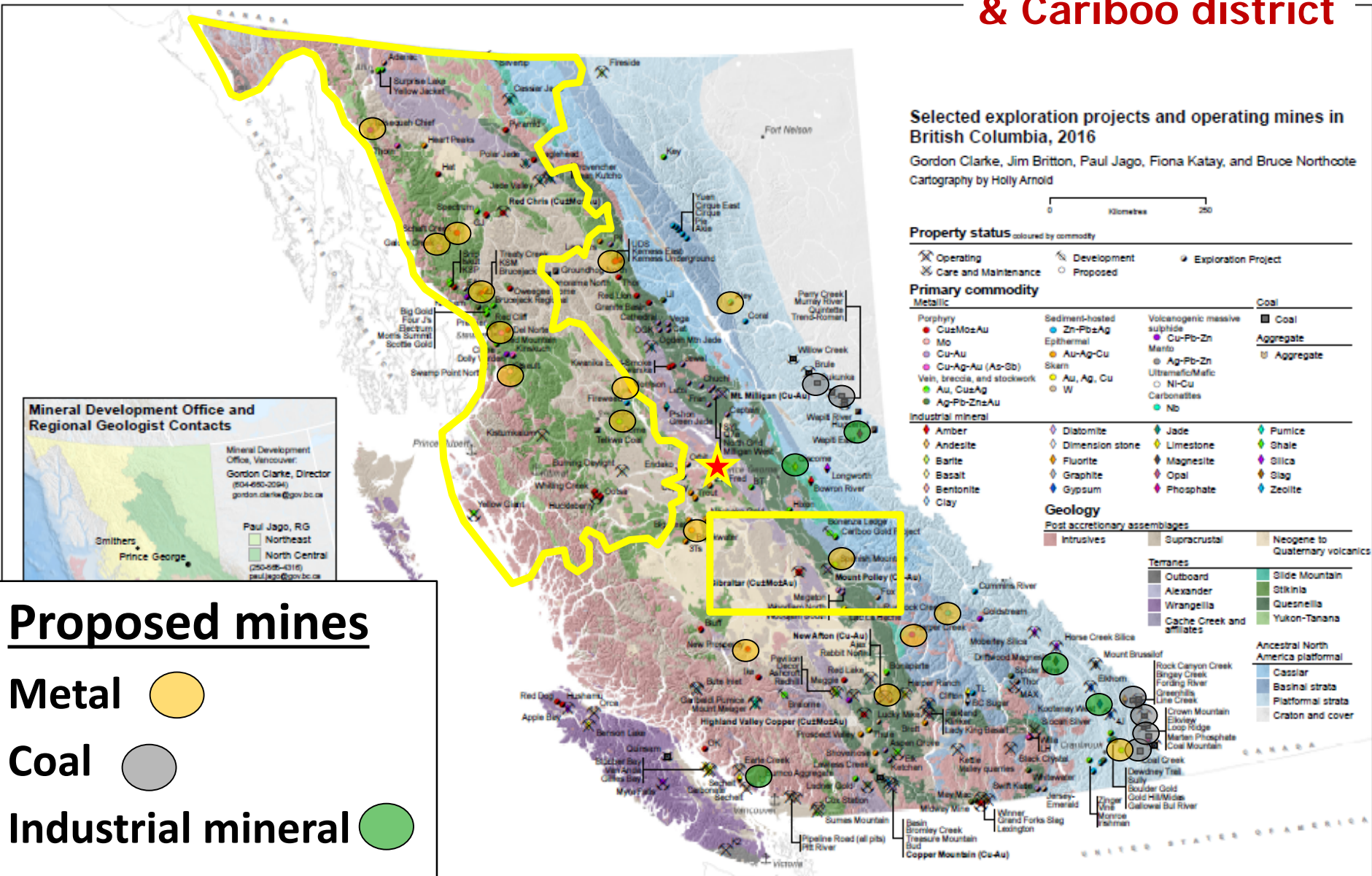


Big Bear
- Parlane Resource Corp.

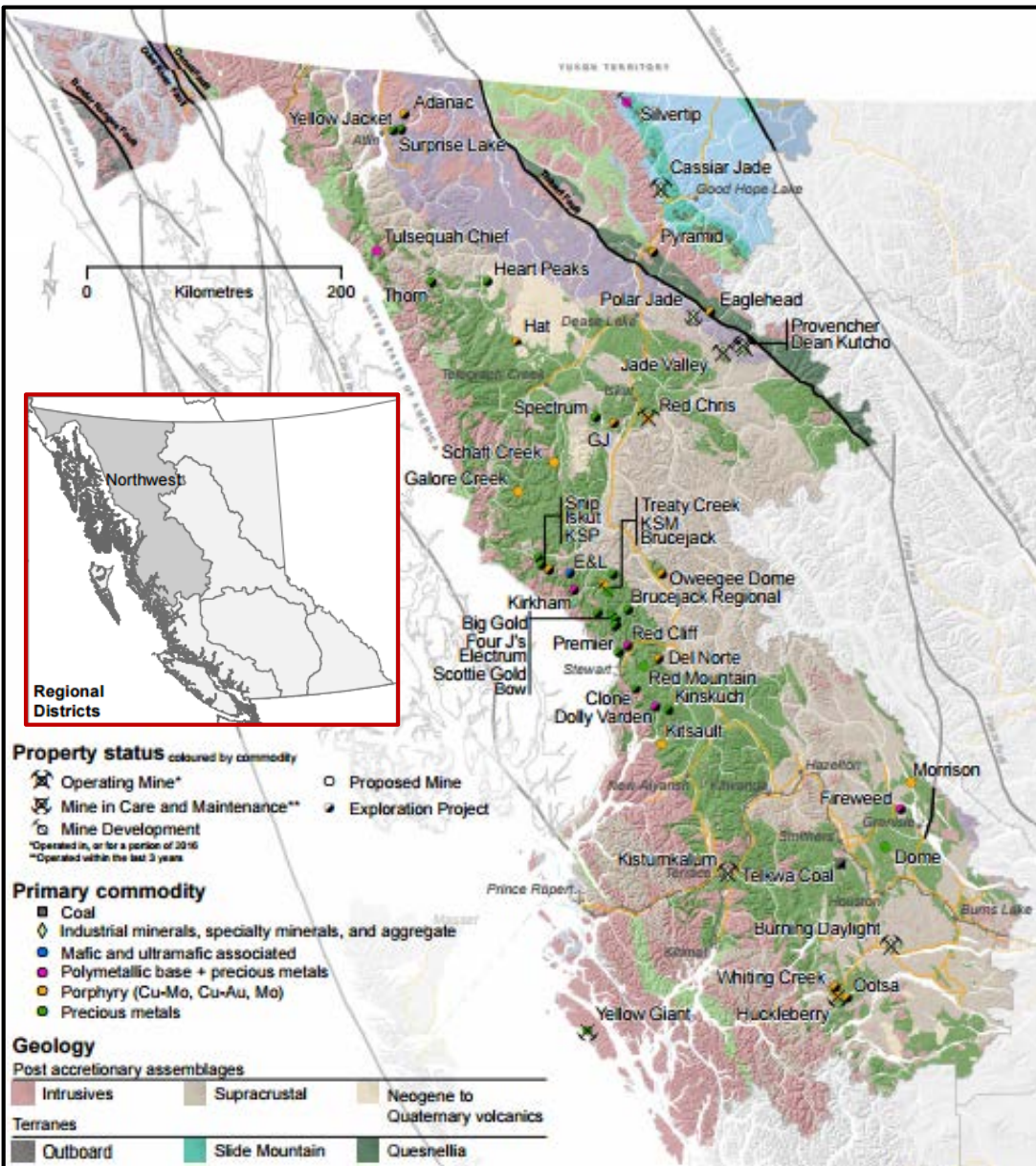


Addendum:

Mines and proposed mines of BC in 2016-17 - Northwest region & Cariboo district



Northwest region



\$84 M exploration expenditure in 2016:

- 41% of provincial total
- 66% = mine evaluation + advanced stage
- 40+ selected exploration projects (117 total active projects)
- 5 projects in Environmental Assessment

2 mines + 5 permitted mine projects

Huckleberry (copper-gold-silver-molybdenum)

- **Care & Maintenance**

Red Chris (copper-gold)

Kitsault (molybdenum-silver)

KSM (copper-gold-silver-molybdenum)

Brucejack (gold-silver) - in development

Tulsequah Chief (gold-silver-copper-zinc-lead)

Silvertip (silver-gold-zinc-lead) - in development

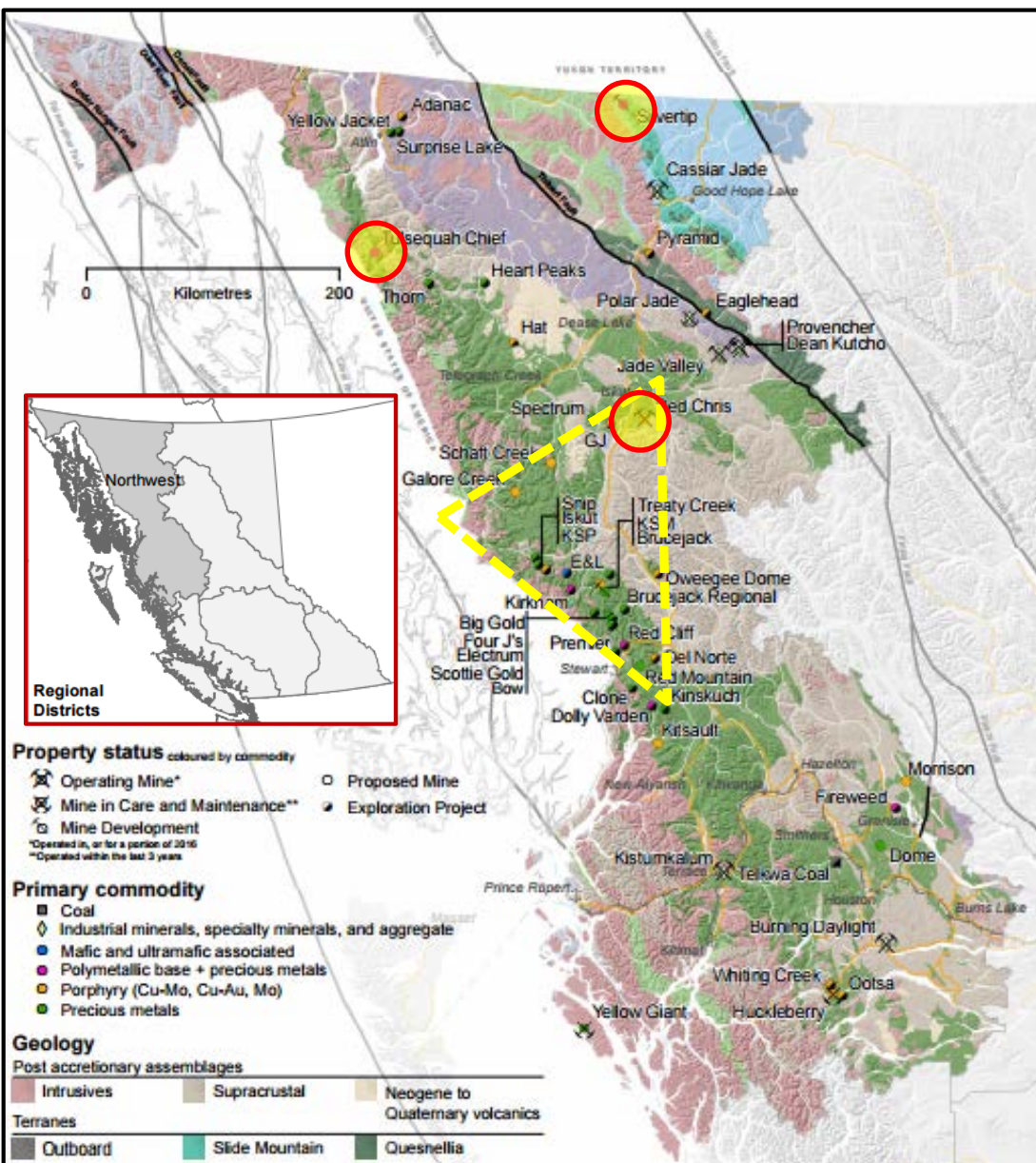
9 industrial mineral mines & quarries:

aggregate, dimension stone, nephrite jade, placer gold

8 proposed mines:

copper ± Au, Ag, Mo; molybdenum-silver; gold-silver vein; polymetallic (Au, Ag, Cu, Zn, Pb)

Northwest region



Silvertip (JDS Silver Inc.)

- <75,000 t/y seasonal UG mine (<1000 t/d mill)
- June 2015: Mines Act permit received
- mine construction, commissioning underway
- \$50 million capex - 150-200 ops jobs - 21 yr mine life
- Resource: 2.35 Mt at 352 g/t Ag, 0.41 g/t Au, 9.41% Zn, 6.73% Pb (Ind.)

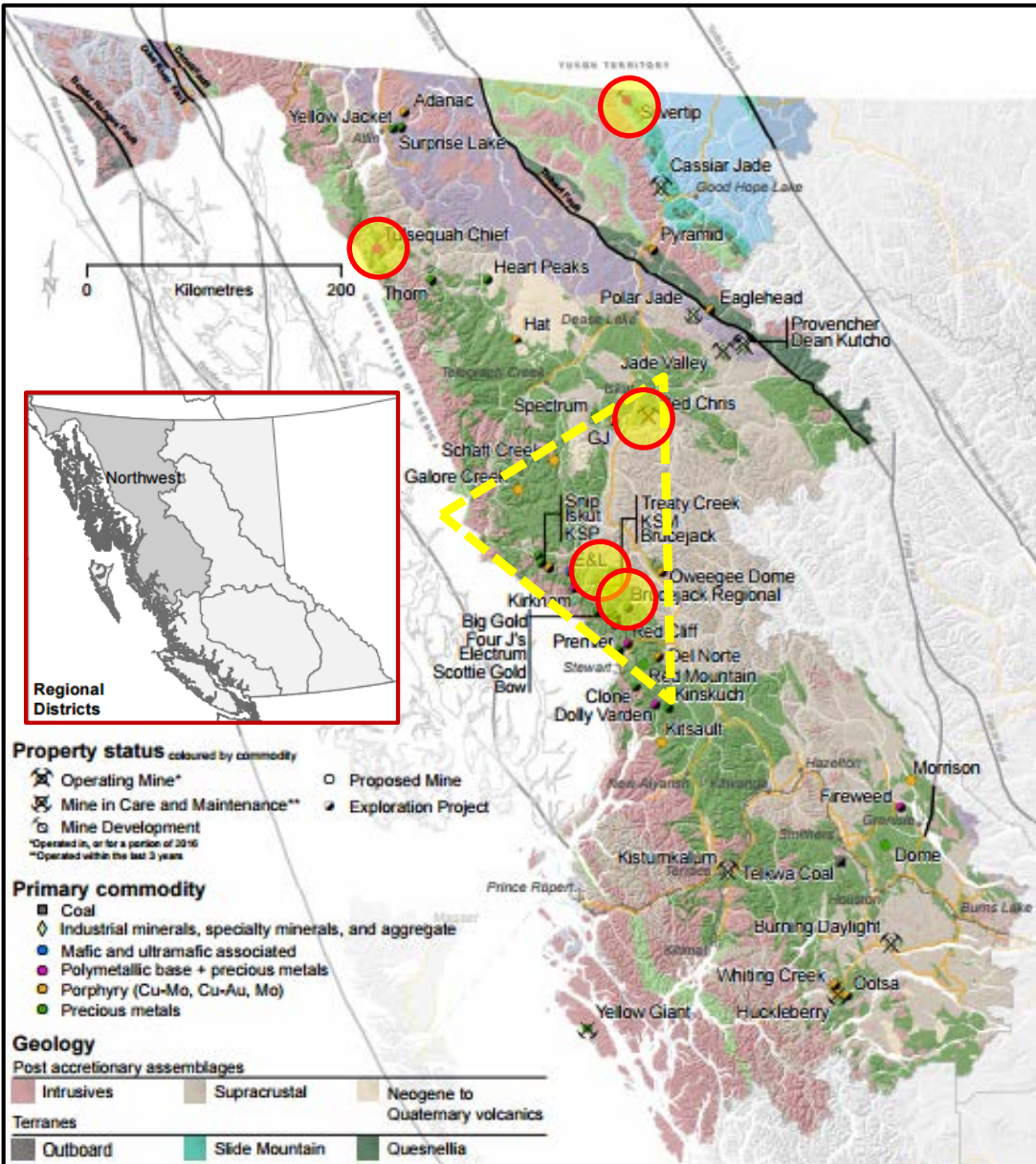
Tulsequah Chief (West Face Capital Inc. formerly by Chieftain Metals Corp.)

- proposed 1100 t/d underground mine
- Reserve: 4.4 Mt at 2.9 g/t Au, 104 g/t Ag, 1.5% Cu, 7.0% Zn, 1.3% Pb
- proposed conventional barging 5 months of year
- 11 year mine life <265 jobs - \$198 M pre-prod capex
- Sept 2016 - company went into receivership

Red Chris mine (Imperial Metals Corp.)

- 2016 first full year of commercial production
- produced: 83.6 Mlbs Cu, 47.1 Koz Au, 190.6 Koz Ag
- <30,000 t/d processing - mining Main zone pit
- \$643 M open-pit mine - July 2015 production began
- Reserve: 301.5 Mt at 0.36% Cu, 0.27 g/t Au
- Resource: 1,034.7 Mt at 0.35% Cu, 0.35 g/t Au, 1.14 g/t Ag
- open-pit expansion & block cave mining studies
- 27 year mine life - ~270 permanent jobs

Northwest region



KSM (Seabridge Gold Inc.)

- largest undeveloped Cu-Au reserve in world
- 2014: fully permitted (Prov + Fed) - seeking partner
- four deposits: Kerr, Sulphurets, Mitchell, Iron Cap
- open pit & block cave -130,000 t/d - 35 of 53 yr mine
- Reserve: 2.2 Bt at 0.55 g/t Au, 0.21% Cu, 2.6 g/t Ag, 42.6 ppm Mo
=38.8 Moz Au, 10.2 Blbs Cu, 183 Moz Ag, 207 Mlbs Mo
- capex \$US 5.0 B - 1800 jobs construction, 1040 ops
- 2016: new pre-feasibility & scoping studies
(170 Kt/d mill rate - 51 yrs - mainly block cave -\$5.5 B)
- permitted to construct 2100 m adit - Deep Kerr
- drilling cont'd - Deep Kerr, Lower Iron Cap zones

Brucejack (Pretivm Resources Inc.)

- 2015: fully permitted - Sept 2015 construction start
- 2016-17: UG development (>10 Km)
- Apr 2017 commissioning, commercial prod. by yr-end
- underground mine - \$US 811.1 M capex
- 2700 t/d mill producing 7.3 Moz gold - 18 yr mine
- avg. 504 Koz/y gold prod. first 8 yrs (404 Koz/yr LOM)
- Reserve: 15.6 Mt at 16.1 g/t Au, 11.1 g/t Ag (VOK)
- 2-year construction: 700+ employees, contractors
ops jobs = 300+ (330-person camp onsite)
- 2015-16 infill drilling - 49 intersections >1000 g/t Au
- surface exploration & drilling of nearby targets

Silvertip - JDS Silver Inc.
mine development



Red Chris - Imperial Metals Corporation
mine production



KSM - Seabridge Gold Inc.
proposed mine (advanced to mine evaluation stage)

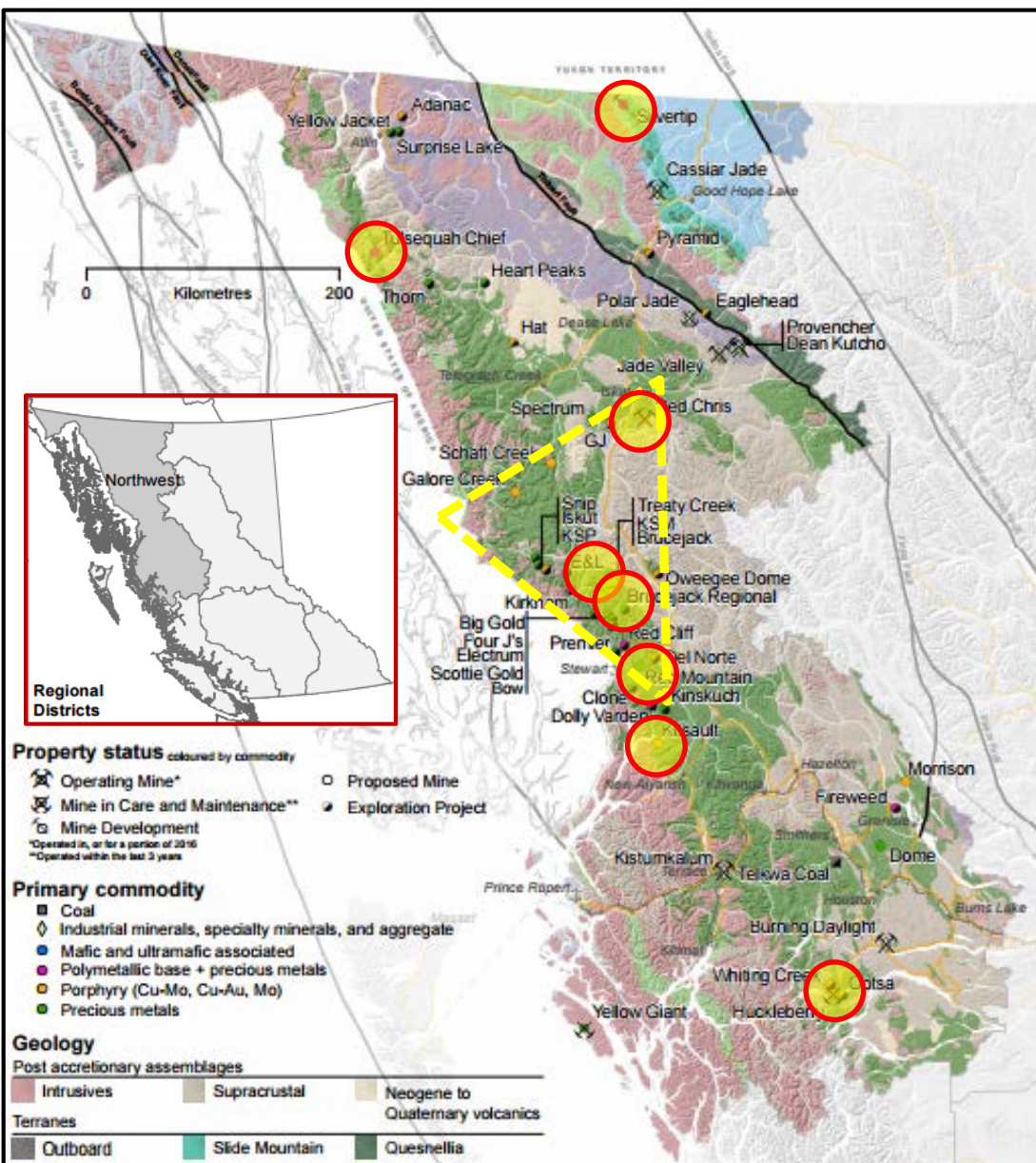


Red Mountain - IDM Mining Ltd.
proposed mine (advanced stage)



Brucejack - Pretivm Resources Inc.
mine development

Northwest region



Red Mountain (IDM Mining Ltd.)

- proposed seasonal underground mine, 1000 t/d mill
- 2016: updated scoping (PEA) study
- rehabbed UG workings - UG infill & surface drilling
- US \$89 M initial capex - 5 yr mine life
- annual production: 55.5 Koz Au, 171 Koz Ag
- Resource: 2.07 Mt at 8.75 g/t Au, 25 g/t Ag (M&I)
= 583.7 Koz gold, 1.66 Moz silver
- 2017: planned EA appl. submission, feasibility study

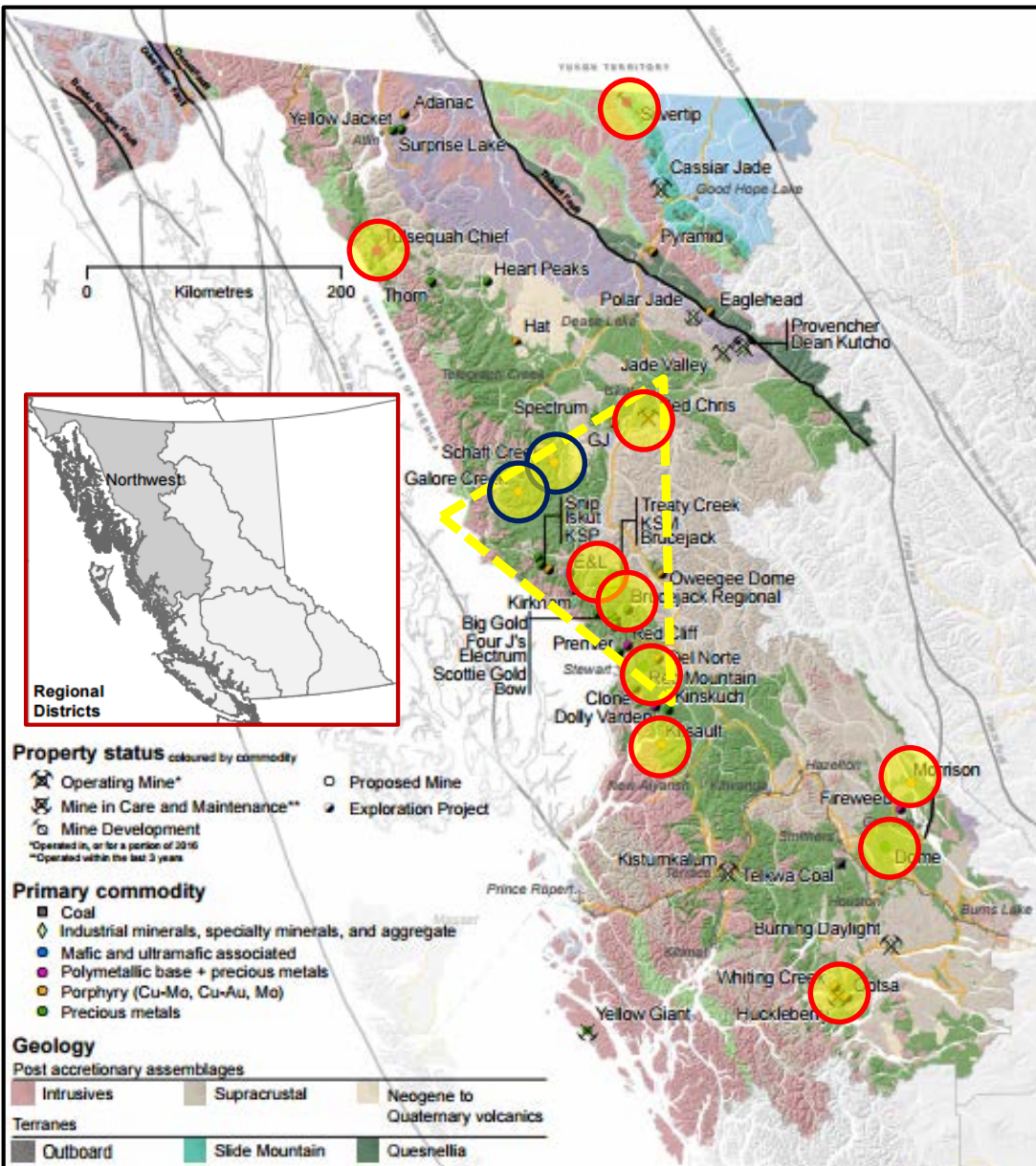
Kitsault (Alloycorp Mining Inc.)

- proposed open-pit mine - 45,500 t/d processing
- \$1200 M capex (~50% sourced) - 14 yr mine life
- 2014: fully permitted (Prov + Fed)
- 700 jobs construction - 300 jobs ops
- Reserve: 228.2 Mt at 0.083% Mo, 5.0 g/t Ag
- 2017: Alloycorp now subsidiary of major shareholder

Huckleberry mine (Imperial Metals Corp)

- open-pit mine - 18,500 t/d processing
- 2016 prod: 20.4 Mlbs Cu, 1.9 Koz Au, 100.4 Koz Ag
- Reserve: ~37 Mt at 0.3% Cu (MZO pit)
- Jan 2016 - ops suspended, milling stockpile
- Aug 2016 - care & mainten. - had employed ~200
- tailings dam construction cont'd
- exploration drilling on Whiting Creek target

Northwest region



Dome Mountain (Gavin Mines Inc., Grace Mining Inc., Dome Mtn Resources Canada Inc)

- past-producing underground mine
- proposed 250 t/d processing - <75,000 t/y production
- Reserve (Prob.): 135 Kt at 11.2 g/t Au = 48.7 Koz Au
- Mines Act permit amendment process ongoing for on-site milling & tailings storage
- 2016: 5,700 t stockpile material processed at Nicola Mining Inc. custom mill facility in Merritt BC
- prod. = 1517 oz Au, 8026 oz Ag, 4-year agreement
- 2015-2016 infill drilling program - 5+ yr mine life

Morrison (Pacific Booker Minerals Inc.)

- proposed open-pit mine - 30,000 t/d processing
- 21 yr mine life - capex \$516.7 M
- 1100 jobs construction - 251 jobs ops
- Reserve:
 - 224.3 Mt at 0.33% Cu, 0.16 g/t Au, 0.004% Mo
 - = 1.37 Blbs Cu, 658 Koz Au, 10 Mlbs Mo
- 2015: EA review resumed - more assessment needed (additional information, analysis, FN engagement)

Others in EA pre-application stage:

Galore Creek (Teck Resources Limited 50%, Nova Gold Resources Inc.)

- 2016: in-house engineer. & optimization studies, baseline data collection, camp maintenance
- Reserve:
 - 528 Mt at 0.59% Cu, 0.32 g/t Au, 6.02 g/t Ag

South Central region

\$43.5 M exploration expenditure 2016

- 21% of provincial total
- 18 selected exploration projects
- 5 projects in Environmental Assessment

5 major operating mines:

Gibraltar (copper-molybdenum)

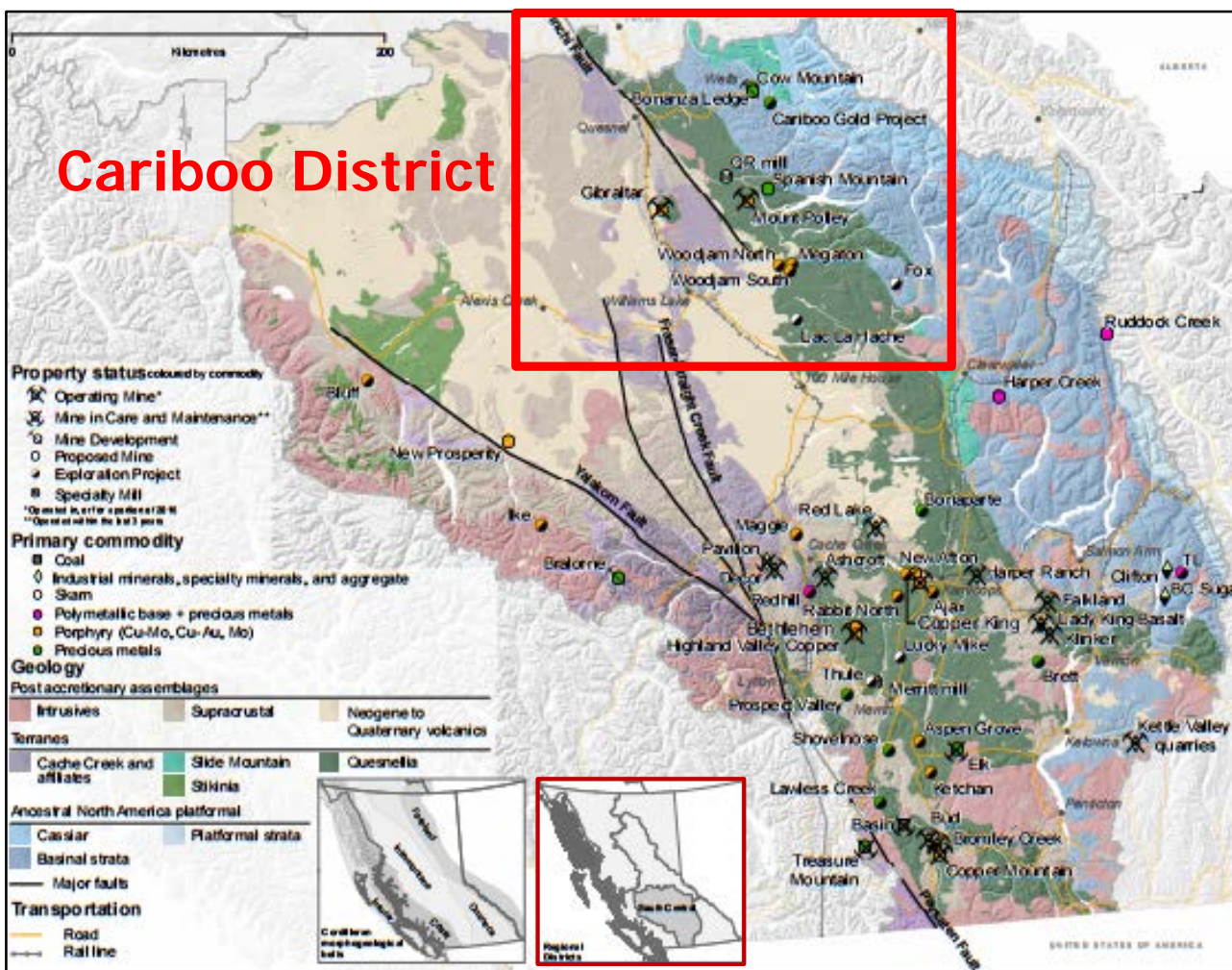
Mount Polley (copper-gold-silver)

New Afton (copper-gold-silver)

Highland Valley Copper (copper-molybdenum)

Copper Mountain (copper-gold-silver)

Cariboo District



4 smaller mines

(2016 - all on Care & Maintenance)

Bonanza Ledge (gold)

Bralorne (gold)

Treasure Mtn (silver-lead-zinc)

Basin (thermal coal)

12 industrial mineral mines

+ quarries:

alumina, basalt, bentonite, diatomaceous earth, flagstone, gypsum, limestone, magnetite, opal, placer gold, zeolite

7 proposed mines (4 in EA):

copper-gold \pm silver

gold-silver

zinc-lead \pm silver

Gibraltar (Taseko Mines Ltd., Cariboo Copper Corp.)

- open-pit mine - 85,000 t/d processing, 2 concentrators
- 2016 produced: 133.3 Mlbs Cu, 0.95 Mlbs Mo
- Sept 2016 - reopened molybdenum circuit
- Reserve: 679 Mt at 0.256% Cu, 0.008% Mo
= 3.3 Blbs Cu, 62 Mlbs Mo (recoverable)
- 22 yr mine life - ~660 employees
- 2016: drilling new Cu-Au-Ag-Mo zone NW of mine

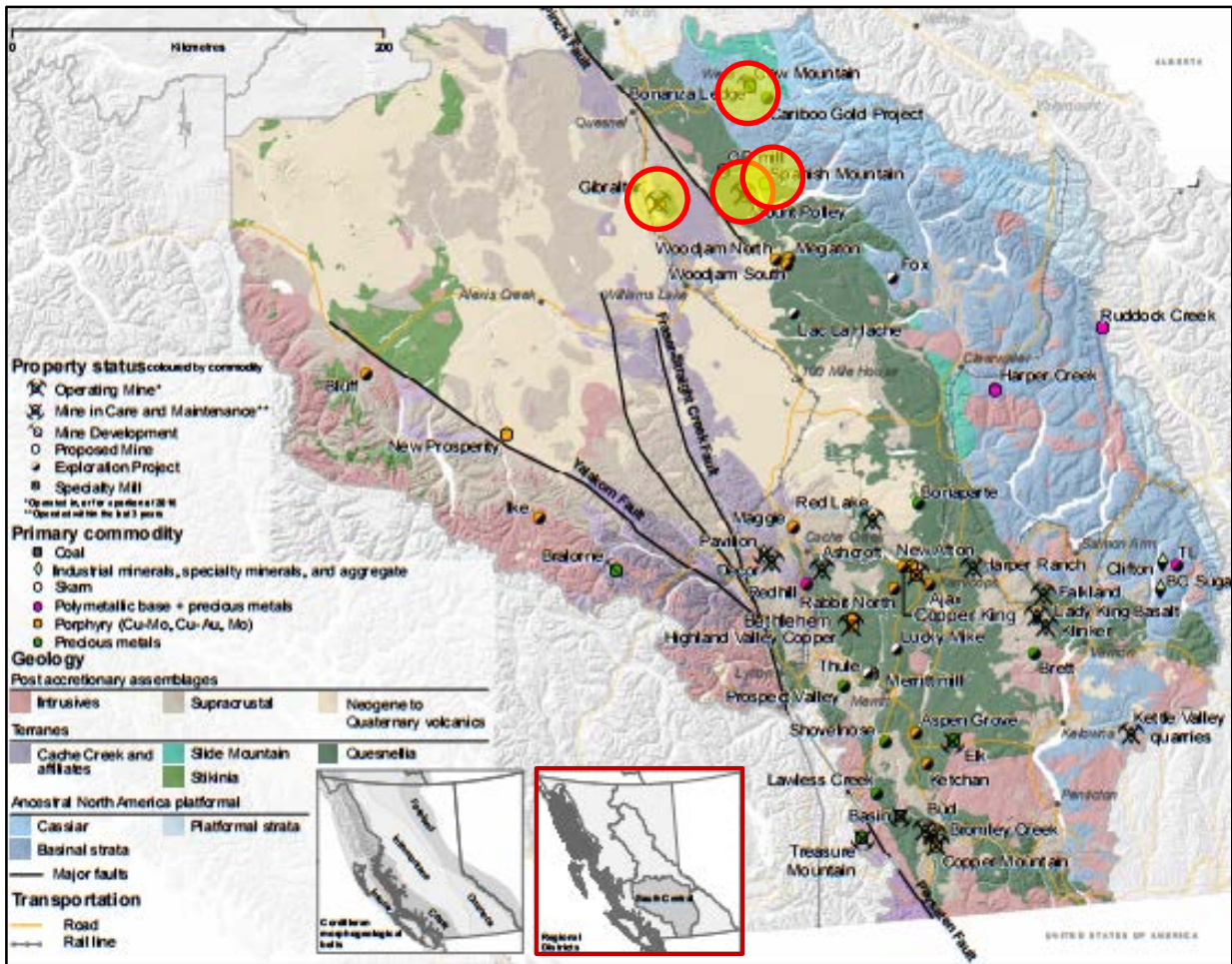
Mount Polley mine (Imperial Metals Corporation)

- Aug 2014: 24.5 Mm³ tailings & water breach - \$67.4 M rehab
- June 2016 return to normal ops approved - 20,000 t/d processing
- 2016 produced: 25.3 Mlbs Cu, 46.4 Koz Au, 90.1 Koz Ag
- Cariboo pit & Boundary zone UG - discharging water Springer pit
- Reserve: 73.6 Mt at 0.27% Cu, 0.29 g/t Au, 0.56 g/t Ag
= 443 Mlbs Cu, 692 Koz Au, 1.33 Moz Ag
- UG drilling - Martel & Green zones under Wight Pit - confirm block

- 9+ year mine life - ~350 jobs (normal ops)

Spanish Mountain (Spanish Mountain Gold Ltd.)

- proposed open-pit mine
- 2017: PEA completed for First Zone
- 2016: env. baseline studies
eng. studies - alternative mine model
metallurgical studies - flowsheet
- 20,000 t/d processing for 20 yr mine life
(40,000 t/d for 14.4 yrs - previous model)
- two-zone approach:
start with high-grade core (First zone; 24 yrs)
- LOM prod: 2.2 Moz Au, 1.5 Moz Ag
- Resource:
237.8 Mt at 0.46 g/t Au, 0.69 g/t Ag (M&I)
= 3.5 Moz gold, 6.3 Moz silver
- est. \$507.1 M pre-prod capex
- sediment-hosted (Nicola Gp.) gold deposit

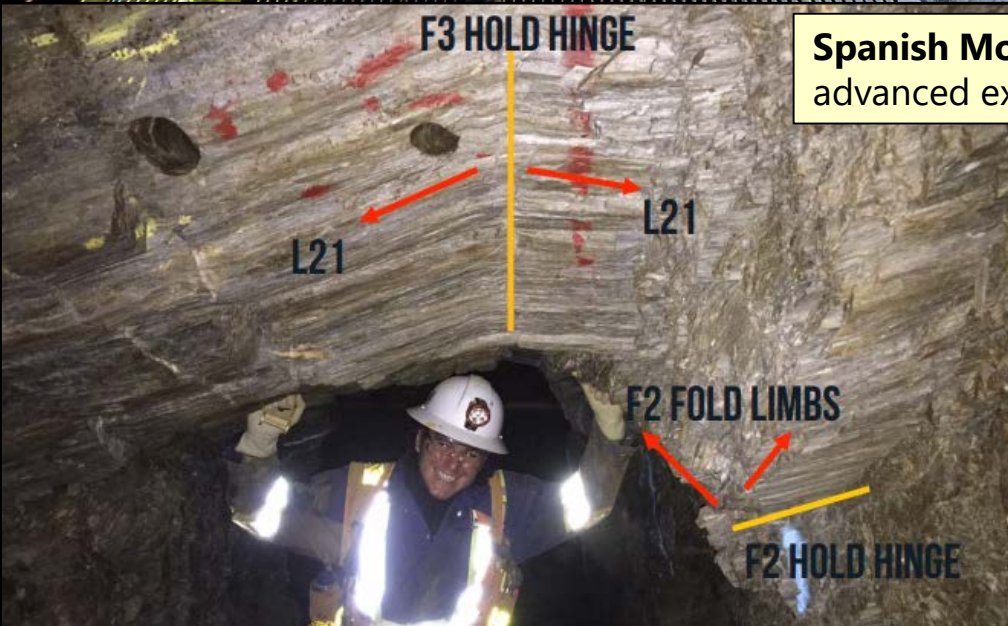




Mount Polley - Imperial Metals Corporation
mine production



Gibraltar - Taseko Mines Ltd., Cariboo Copper Corp.)
mine production



Spanish Mountain - Spanish Mountain Gold Ltd.
advanced exploration stage



Bonanza Ledge (Cariboo Gold) - Barkerville Gold Mines Ltd.
mine development, early-advanced exploration stage

References

- Cui, Y., Miller, D., Nixon, G., and Nelson, J., 2015. British Columbia digital geology. British Columbia Geological Survey Open File 2015-2.
- Nelson, J. L., Colpron, M., and Israel, S.K., 2013. The Cordillera of British Columbia, Yukon, and Alaska: tectonics and metallogeny. In: Colpron, M., Bissig, T., Rusk, B., and Thompson, J.F.H., (Eds.), Tectonics, Metallogeny, and Discovery - the North American Cordillera and similar accretionary settings. Society of Economic Geologists, Special Publication 17, pp. 53-109.

Acknowledgments

Thanks to the geologists and miners who were generous with their time and resources, and those who provided expenditure and related information. I also thank the Regional Geologists and the Mineral Development Office for additional support, and the skilled staff at the Ministry of Energy and Mines regional office in Prince George.

Thank you.

