

Third largest Australian gold producer on the ASX



[Home](#) >
 [OUR ASSETS](#) >
 [DUKETON GOLD PROJECT](#) >
 [GARDEN WELL](#)

Garden Well

Our Assets

Duketon Gold Project

[Moolart Well](#)

[Garden Well](#)

[Rosemont](#)

Tropicana Joint Venture

NSW Projects

[McPhillamys](#)

Resources & Reserves

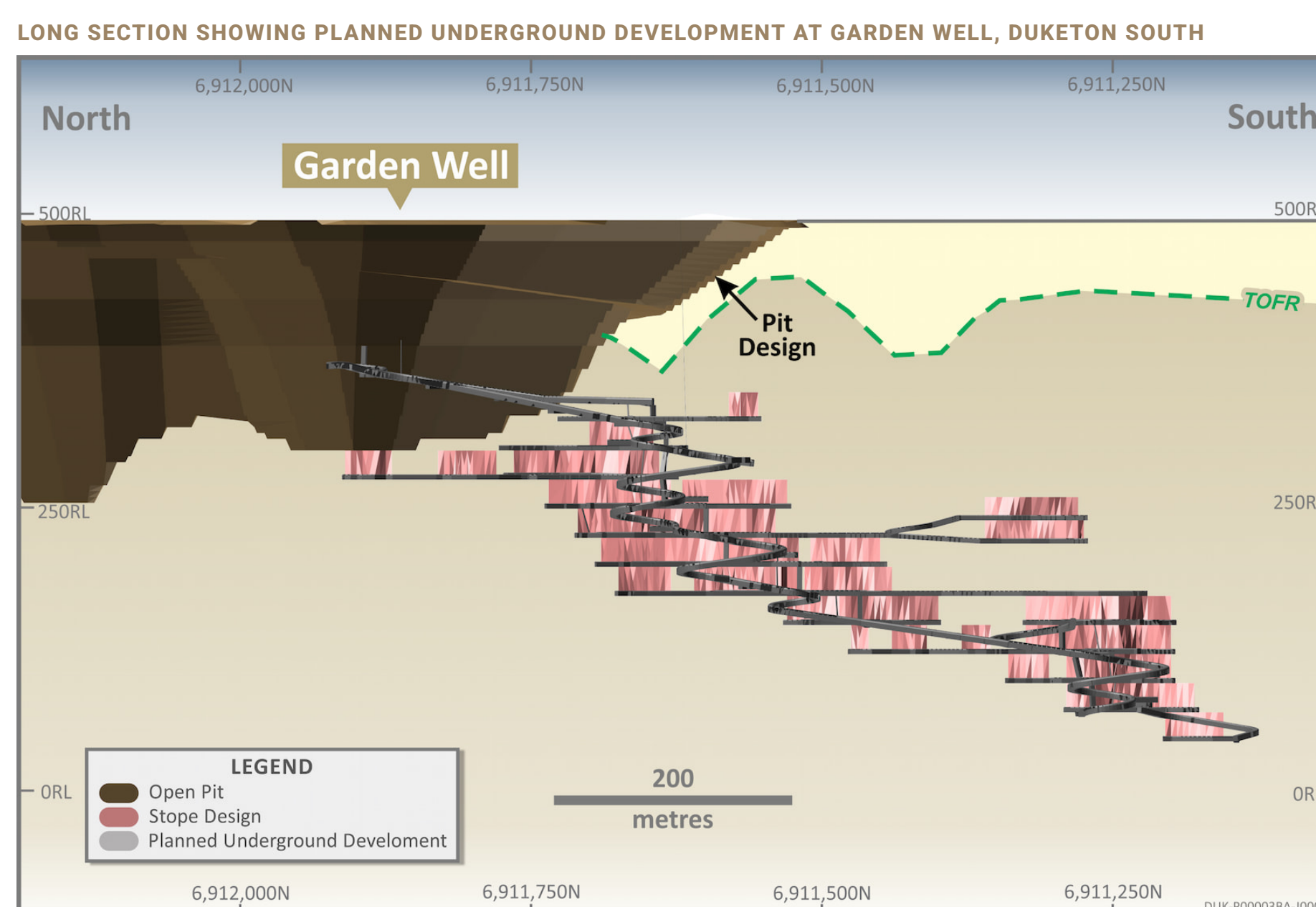
Discovery

The Garden Well Operations include Garden Well open pits, Tooheys Well, Russell's Find and Erlistoun open pits. Underground operations at Garden Well South commenced in 2021.

The Garden Well and associated deposits are mined using conventional open pit mining truck and shovel methods. The plant design is based on a nominal 5Mtpa throughput rate utilising a two stage crushing circuit, scrubber and single ball mill. The carbon in leach circuit is larger in capacity to enable processing of the Rosemont feed in slurry at a combined rate of approximately 7.5Mtpa.

Garden Well Underground

The Garden Well South Underground Project was recently approved by the Board. Initial development of the underground mine is due to commence during 2021.



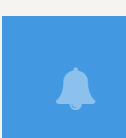
[Moolart Well](#) →

[Rosemont](#) →

Subscribe for updates

Keep up to date with all the latest news. You can unsubscribe at any time.

Enter your email address



Regis Resources Ltd (ASX:RRL) is a high-margin gold producer and explorer with over a decade of consistent production and reserve growth, underpinned by continued exploration success and targeted acquisitions.

Home

[About Us](#)

[Our Assets](#)

[Sustainability](#)

[Careers](#)

[Contact Us](#)

Investor Centre

[ASX Announcements](#)

[AGM](#)

[Presentations](#)

[Reports](#)

[Broker Research](#)

[Investor Reinvestment Plan](#)

CONTACT REGIS RESOURCES

enquiries@regisresources.com

+61 8 9442 2200

Find us on LinkedIn

Level 2, 516 Hay Street
Subiaco, WA 6008

PO BOX 862
Subiaco WA 6904