

20 October 2023

Dear Neighbour,

RE: Russell Vale Underground Expansion Project – Coal Transport Modification

Wollongong Resources Pty Ltd (Wollongong Resources) is the owner and operator of the Russell Vale Colliery located approximately 8 kilometres north of Wollongong, New South Wales (Figure 1).

Wollongong Resources is currently installing a dry Coal Preparation Plant (CPP) at the Russell Vale Colliery. As part of the installation and operation of the CPP, Wollongong Resources is also evaluating as an option to use the established Dendrobium CPP located at BlueScope Port Kembla Steelworks. This option would be to further add value to coal mined at the Russell Vale Colliery.

The purpose of this letter is to inform you that Wollongong Resources is preparing a modification to allow the transport of Russell Vale Colliery ROM coal to the Dendrobium CPP (the Modification).

Background

Illawarra Coal Holdings Pty Ltd (Illawarra Metallurgical Coal [IMC]), a wholly owned subsidiary of South32 Limited, is the owner and operator of the Dendrobium CPP located in the BlueScope Port Kembla Steelworks (approved as part of the Dendrobium Mine) and the West Cliff Coal Wash Emplacement Area (approved as part of the Appin Mine).

Unwashed coal (ROM coal) from the Russell Vale Colliery is currently trucked via public roads to the Port Kembla Coal Terminal (PKCT) for export.

Wollongong Resources and IMC are investigating options to wash Russell Vale Colliery ROM coal at the Dendrobium CPP.

There would be no material change to currently approved operations, as trucks currently transporting Russell Vale Colliery ROM coal to the PKCT would use internal/private roads at the BlueScope Port Kembla Steelworks to transport ROM coal from PKCT to the Dendrobium CPP (Figure 2). Similarly, trucks currently approved to transport coal wash to West Cliff Coal Wash Emplacement Area would be used to transport the Russell Vale Colliery coal wash.

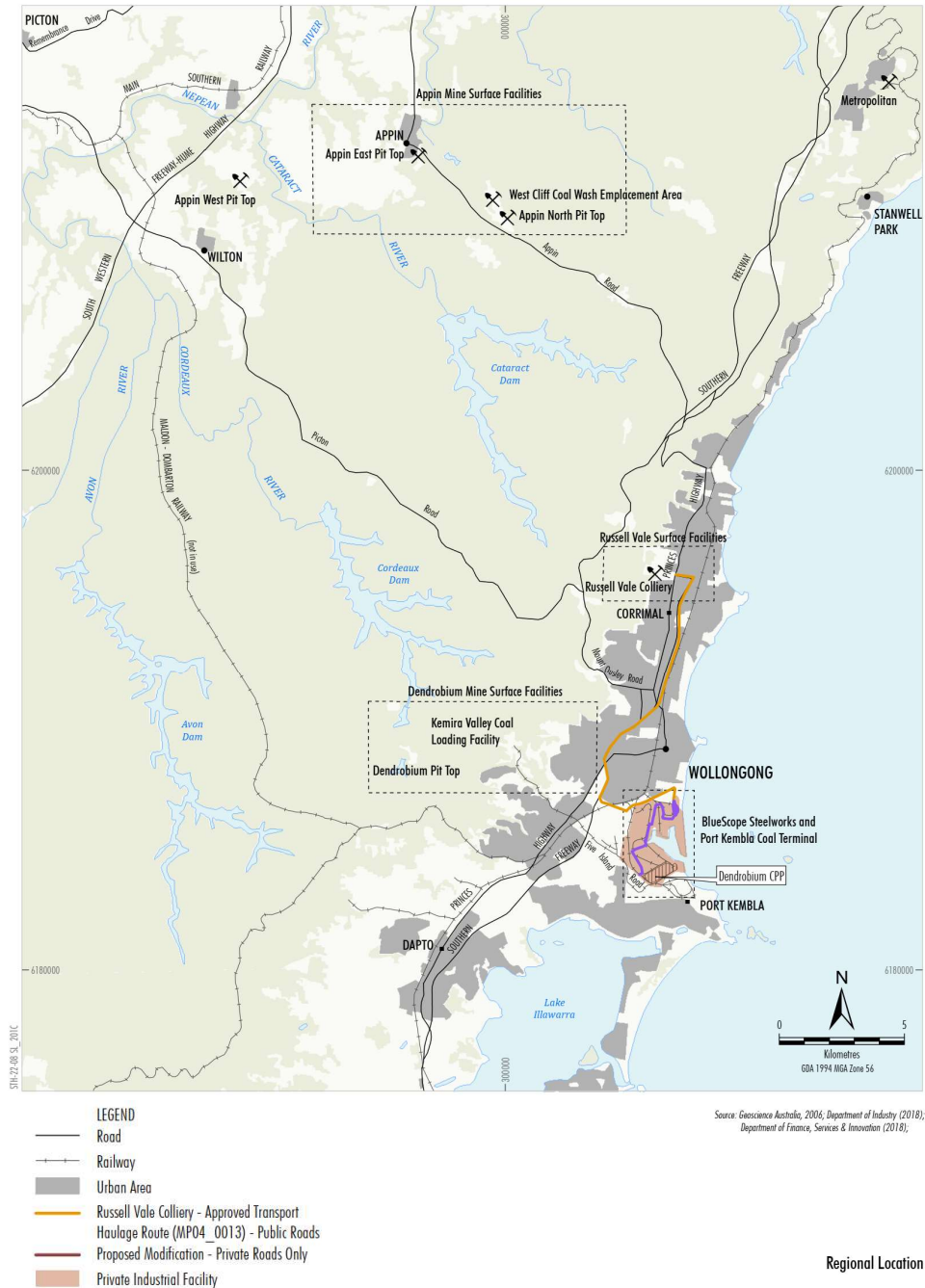
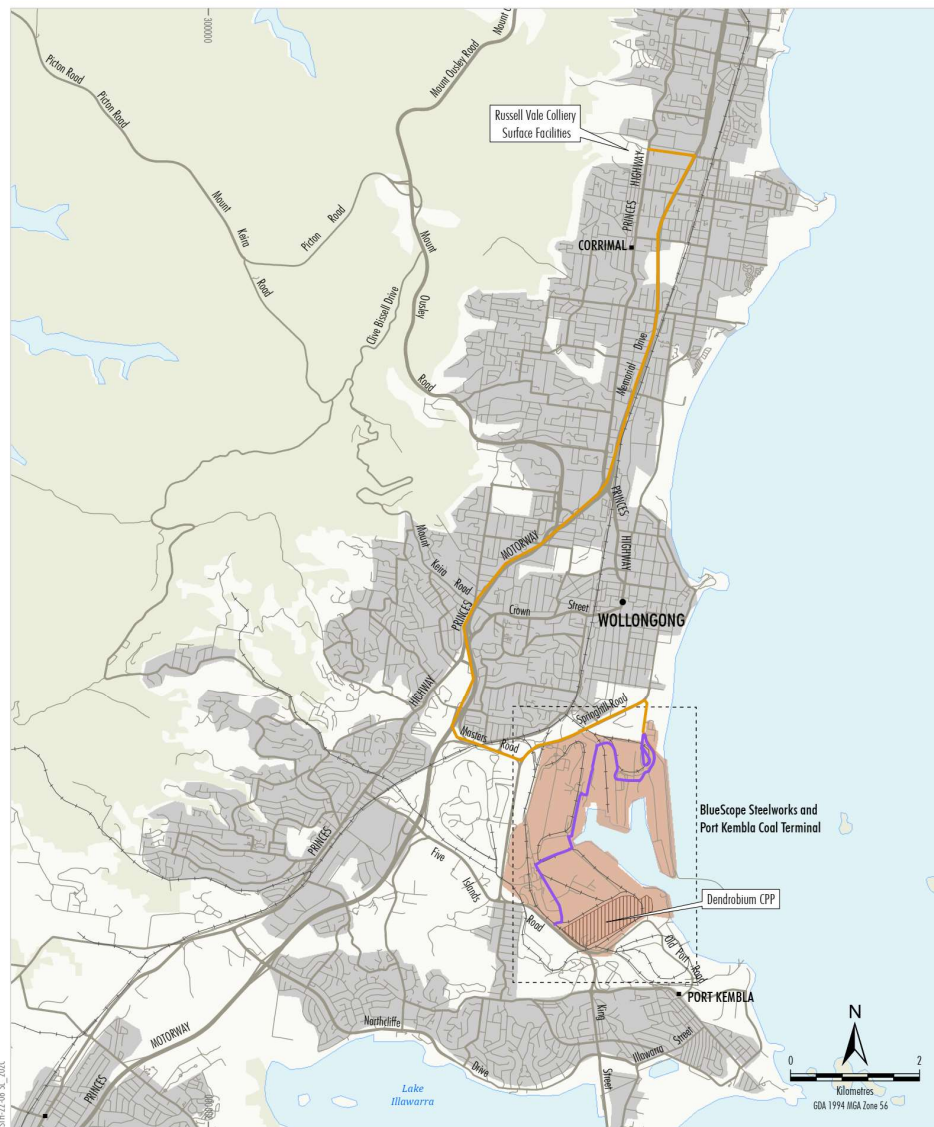


Figure 1



Source: Geoscience Australia, 2006; Department of Industry (2018); Department of Finance, Services & Innovation (2018);

Proposed Modification

Figure 2

Details of the Modifications

The Modification prepared by Wollongong Resources would consider the following (Figure 2):

- Transport of Russell Vale Colliery ROM coal from the PKCT to the Dendrobium CPP via private roads.
- Transport of washed Russell Vale Colliery product coal from the Dendrobium CPP to the PKCT via private roads.

Separate modifications to the Dendrobium Mine Development Consent (DA 60-03-2001) and Appin Mine Project Approval (PA 08_0150) would be undertaken to accommodate the Modification. The separate modifications would be undertaken by South32 Limited and consider the following:

- Receipt and processing of Russell Vale Colliery ROM coal at the Dendrobium CPP.
- Transport of Russell Vale Colliery coal wash from the Dendrobium CPP to the West Cliff Coal Wash Emplacement Area or to beneficial use in the local area.
- Receipt of Russell Vale Colliery coal wash from the Dendrobium CPP at the West Cliff Coal Wash Emplacement Area or to beneficial use in the local area.

The modifications would require no change to:

- Mining operations at the Dendrobium Mine, Appin Mine and Russell Vale Colliery.
- Surface disturbance at the Dendrobium Mine, Appin Mine and Russell Vale Colliery (e.g. to facilitate transport or stockpiling of ROM coal, product coal or coal wash).
- Mine life(s), employment numbers, mining activities or other surface activities associated with the approved Dendrobium Mine, Appin Mine & Russell Vale Colliery.
- Product coal transport route(s) on public roads from Russell Vale Colliery to BlueScope Port Kembla Steelworks, PKCT or existing domestic customers.
- Coal wash transport route(s) from the Dendrobium CPP to the West Cliff Coal Wash Emplacement Area or beneficial use.
- Maximum capacity of the West Cliff Coal Wash Emplacement Area (i.e. the West Cliff Coal Wash Emplacement Area has sufficient approved capacity to accommodate coal wash from the processing of Russell Vale Colliery ROM coal).
- Approved Dendrobium CPP maximum processing rate (5.2 Mtpa).

Next Steps

Modification Reports are proposed to be submitted Q4 2023.

If you would like a briefing in regard to the modification, please don't hesitate to contact us.

WOLLONGONG RESOURCES PTY LTD

T: 02 4223 6800 (9am – 5pm)

E: contactus@wcl.net.au

Website portal: <https://wollongongresources.net.au/contact-us/>