



Canada Sustainability Approach

2024 Report




This image and on the cover: flying over the Ring of Fire region in northern Ontario.

03	LAND ACKNOWLEDGEMENT
05	OUR VALUES
07	LETTER FROM CEO CANADA
09	LETTERS FROM FIRST NATION COMMUNITIES
	Chief Bruce Achneepineskum Marten Falls First Nation
	Chief Cornelius Wabasse Webequie First Nation
15	KEY HIGHLIGHTS
17	OVERVIEW OF EAGLE'S NEST PROJECT
23	SUSTAINABILITY APPROACH
23	People Transparency, Inclusion and Co-Led Participation
30	Planet Sustainability at the Heart of Our Design
37	Project Developing our Flagship Eagle's Nest Project
41	APPENDIX
42	FEEDBACK AND STAY CONNECTED

Land Acknowledgement

Teepee at the Eagle's Nest Project.

A large, traditional white teepee stands in a clearing surrounded by tall, slender evergreen trees. The teepee is made of light-colored fabric and has several wooden poles protruding from its top. The background is a dense forest of similar trees under a clear sky.

We acknowledge that the Eagle's Nest Project is on the territory of the Anishnawbe people of Marten Falls First Nation and neighbours Webequie First Nation, both signatories to Treaty 9.

Our Values

Wyloo is driven by a set of values, core to who we are and how we operate each and every day.

Family

Enthusiasm

Empowerment

Safety

Frugality

Courage and
Determination

Stretch
Targets

Generating
Ideas

Integrity

Humility



Team members at Esker Site.



Kristan H. Straub
CEO Canada



Our key sustainability principles are rooted in transparency, minimizing environmental and social impacts, and ensuring meaningful and inclusive participation of Indigenous Nations.

Letter from Kristan Straub

Growing up in Falconbridge, Ontario – a town where resource development took centre stage and where mining activities went hand-in-hand with community life – I personally witnessed how partnerships among community members, businesses and mining companies can foster sustainable growth and mutual prosperity.

As a First Nation member myself, my lived experiences and upbringing have taught me that successful development hinges on several key principles, including respect for community values and empowering communities to make decisions that align with their values, while safeguarding our environment and ensuring that economic benefits are shared equitably.

Since the acquisition of Noront by Wyloo in 2022, we have dedicated ourselves to charting a progressive path for the development of our Eagle's Nest Project. Central to this journey is our commitment to an all-encompassing sustainability approach – based on People, Planet and Project – which will be the bedrock of design for Eagle's Nest.

This report strives to outline our key sustainability principles rooted in transparency, minimizing environmental and social impacts, and ensuring the comprehensive and inclusive participation of Indigenous Nations.

Our focus on transparency means that we strive to maintain open and honest communication with all stakeholders, providing regular updates on our progress and challenges. We believe that by being transparent, we can build trust and foster stronger relationships with our stakeholders.

Minimizing environmental and social impacts is not just a goal but a responsibility we take seriously. We are committed to employing best practices and innovative solutions to protect the natural environment and ensure that our operations do not adversely affect the communities around us. This includes minimizing our environmental footprint, implementing sustainable technologies and adhering to strict environmental regulations.

The participation of Indigenous Nations is integral to our approach. We recognize and respect the rights, cultures and traditions of

Indigenous Peoples and are committed to engaging with them in a meaningful and respectful manner. This involves active consultation, collaboration and partnership, as well as establishing Indigenous-led monitoring programs to directly involve community members in the collection of data.

Through all stages of Project development, we incorporate feedback from the communities. Our aim is to create opportunities that ensure Indigenous communities benefit economically, socially and culturally from our projects.

This report outlines the steps we have and will continue to take to uphold these principles. It showcases our dedication to create a sustainable and inclusive future in making Eagle's Nest a model of responsible development. We are proud of the progress we have made, but we know that there is always more work to be done.

Our journey in responsible resource development begins with open dialogue and shared goals. By working together, we aim not only to meet but exceed standards, setting a new benchmark for sustainable mining practices. We look forward to continuing our journey with all of you, working together to achieve our shared goals and ensuring that our projects and future operations contribute positively to the world around us.

Kristan H. Straub
CEO Canada, Wyloo



Chief Bruce Achneepineskum

Marten Falls First Nation

Letter from Chief Bruce Achneepineskum

People across Canada are increasingly experiencing the effects of climate change, especially Indigenous Peoples. Climate change exacerbates the environmental, legal, political and social challenges that many Indigenous Peoples already face. Marten Falls First Nation (MFFN) is one of many Indigenous Nations across Canada that is faced with this reality, which is why it supports efforts to decarbonize and put Canada (and the rest of the world) on a path to net zero. That is why MFFN is supportive of Wyloo's ambitions to deliver critical metals and materials needed for a decarbonized future.

Wyloo's flagship project, the Eagle's Nest Project, is in the Ring of Fire area of northern Ontario and in MFFN's traditional territory. Given the Project's location and MFFN's position as the rightsholder to this territory, MFFN holds Wyloo accountable to high standards. MFFN expects Wyloo to advance the Project in a responsible and sustainable manner that not only benefits Wyloo, but also MFFN, Canada and the world more broadly.



We appreciate and respect Wyloo's interest in developing a novel approach to information sharing that will enhance transparency and collaboration between the company and MFFN. We will work with Wyloo to ensure strong implementation of this ideal.

-- Chief Bruce Achneepineskum, Marten Falls First Nation

Transparency

Historically, the mining sector in Canada has not been as transparent as it should be, especially with Indigenous Peoples affected by development. This lack of transparency has adversely affected the rights and interests of Indigenous Peoples in numerous ways. MFFN therefore appreciates and respects Wyloo's interest in developing a novel approach to information sharing that will enhance transparency and collaboration between the Company and affected parties, including MFFN. We will work with Wyloo to ensure strong implementation of this ideal.

Environmental Monitoring

Environmental protection is a top priority for MFFN. Indigenous cultures, identities, relationships, social systems, spirituality and law are intimately tied to land and resources; they are interconnected. It is therefore critical that the viability of the natural environment is sustained. MFFN looks forward to supporting Wyloo with its environmental monitoring efforts, such as by assisting with baseline data collection, leading various monitoring programs and providing guidance and mitigation measures through the application of Indigenous Knowledge.

Project Design

MFFN supports ideals of minimizing project impacts. MFFN is keen to comprehensively understand Wyloo's intent to design the Project in a way that has minimal impacts to the natural environment, surface landscape and nearby communities. MFFN will hold Wyloo accountable to storing 100 per cent of tailings underground; using waste rock and aggregate resources for regional infrastructure development; implementing a closed-loop water system

to avoid mine effluent discharge into waterways; utilizing sustainable energy sources like biomass, solar, among others; and deploying electric vehicle (EV) fleets for mine site activities, to list a few. To reiterate, MFFN has high expectations for Wyloo and its Eagle's Nest Project and we will do our part to ensure class leading implementation. MFFN would also work with Wyloo to develop the Project as a potentially net zero emissions mine.

Indigenous Participation

As the Project is in MFFN's traditional territory, MFFN expects to be included in all aspects of development, from the early planning stages to mine closure. The work that Wyloo has conducted to date has been inclusive and offers opportunities for MFFN's participation. MFFN is working towards co-development of different facets of the Project and the First Nation looks forward to further enhancing its participation in the Project, related infrastructure development and other undertakings by Wyloo.

MFFN expects procurement opportunities for MFFN owned businesses and entrepreneurs, capacity building efforts aimed at MFFN members and training and employment opportunities for MFFN members. MFFN would also like to see Wyloo make a significant and material commitment to Indigenous employment at its mine sites. In addition to pursuing these opportunities, MFFN intends to work with Wyloo on business and economic

development opportunities that supersede Indigenous participation models based solely on procurement and training. We are setting the bar high and our ideal is not just shareholder return but true economic reconciliation. This will take significant work in the coming years and we are committed to undertaking that.

Overall, MFFN and Wyloo are working together collaboratively to advance mutual interests.

This report suggests that Wyloo is committed to environmental and social sustainability and advancing economic reconciliation, which aligns with MFFN's values and interests. MFFN looks forward to the progression of the Eagle's Nest Project, related infrastructure development and other projects by Wyloo. MFFN will continue to work closely with Wyloo to ensure that the commitments outlined in this report (and beyond) come to fruition.

Sincerely,

Chief Bruce Achneepineskum

Marten Falls First Nation

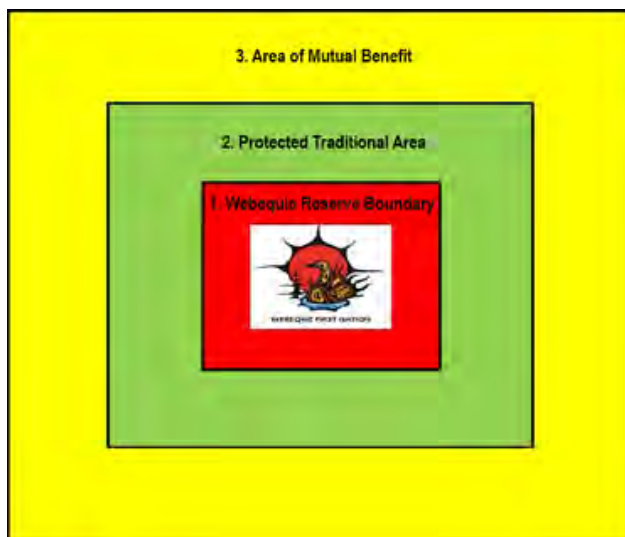




Chief Cornelius Wabasse
Webequie First Nation

Webequie First Nation's Vision for the Future

After generations of dialogue and reflection among community members, Webequie First Nation (WFN) is proud to present its Community Vision for the future, portrayed in a three-tiered model.



- 1. Webequie Reserve Boundary:** requires resources to sustain the reserve and the people that live there.
- 2. Protected Traditional Area:** protects the environment and people while prospering in a way that balances treaty rights, Indigenous Knowledge, traditions and culture.
- 3. Area of Mutual Benefit:** collaboration with other Indigenous Nations, government and industry to sustain the values identified in Tiers 1 and 2.

Letter from Chief Cornelius Wabasse

Chief Cornelius Wabasse of Webequie First Nation (WFN) requested that he provide his thoughts on Wyloo's Sustainability Approach in an interview with our team. Here is a summary of his insights.

When WFN was moved to its current reserve many years ago, the Elders recall being given "a shovel, fork and some equipment" by the government to cultivate the land and develop a sustainable, economic base.

This experience has taught WFN members over the generations the importance of working with the land and resources that are out there to sustain not only their community, but those around them.

When development first began in the Ring of Fire region, WFN recognized the need to adapt to change for their community's sustainability and prosperity. Chief Wabasse remarked that his father and grandfather sustained the land in other ways, but these traditional practices are phasing out and new ways are coming in to sustain their lands, such as mining and logging.

That is why WFN developed the three-tiered Community Vision, one that utilizes and prospers their lands while upholding their traditions and culture.

WFN is working with government and industry in moving forward with development on their traditional lands. They do not want to be left behind; in fact, WFN wants to be at the forefront and participate in what is happening to provide a sustainable future for generations to come.

On-reserve members have also changed their lifestyle from previous generations, moving away from a subsistence-based living to now using hunting and trapping as a cultural practice. Members teach the younger generation about their heritage and customs and WFN also provides considerable resources and opportunities for the youth, including bursaries, summer programs and career fairs, in assisting them into the workforce.

WFN wants to ensure any development on their lands, including in the Ring of Fire, has integrated their Community Vision. This includes Wyloo's Sustainability Approach. As part of the third tier of their vision, WFN sees regional development – specifically the Webequie Supply Road – and the development of the Eagle's Nest Project in the Ring of Fire as an important initiative to ensure the community is effectively engaged in sustainable living through responsible mining, logging and other natural resource practices.

Engaging in these activities is not without its challenges but Chief Wabasse remarked on how his community has come a long way, continually striving to implement WFN's vision at every turn. The key has always been to work together – with government, industry and other neighbouring First Nations – for mutual benefit.



WFN wants to be at the forefront and participate in what is happening and provide sustainable future for generations to come.

-- Chief Cornelius Wabasse, Webequie First Nation

For Wyloo's Sustainability Approach, WFN wants to ensure that the report is integrated and aligned with their vision for the future. This report will play an important role in holding Wyloo accountable and serving as a benchmark to measure against progress of the Eagle's Nest Project.

Of the commitments outlined in this report, WFN has emphasized two key priorities. First, that environmental protection is aimed at working together with their community to establish a responsible development plan. Second, for meaningful participation in the Eagle's Nest Project, so that opportunities are created and sustained for the community that extend beyond the Project's lifecycle.

While the community's relationship with Wyloo is a work in progress, Chief Wabasse appreciates the current level of engagement. He commented on the opportunity to meet Andrew and Nicola Forrest and WFN also appreciates how senior management of Wyloo engages with the community to discuss both the concerns and opportunities presented by the Eagle's Nest Project.

Wyloo has shown openness in addressing the challenges facing Webequie and WFN expects the Company to uphold their commitment to provide updates to their community, increase visibility and deliver regular updates on the Eagle's Nest Project.

WFN looks forward to the continued collaboration with Wyloo, building on the principles of mutual trust and respect, and hopes that Wyloo shares in their dedication to ensuring a sustainable and prosperous future for Webequie First Nation.

Chief Cornelius Wabasse
Webequie First Nation



Key Highlights

Developing world-class operations vital for the clean energy transition.

We are advancing Eagle's Nest in partnership with First Nation communities, incorporating industry-leading technologies to produce high-grade clean critical minerals needed for the clean energy transition.



Radical Transparency

The Glass Box is intended to provide maximum transparency to stakeholders. We will provide real-time access to “whole-of-project” information to enable to real-time compliance monitoring as well as robust implementation of adaptive management processes to communities and stakeholders.



Minimizing Surface Disruption

This includes no surface quarries, no open pits, no waste rockpiles and a mine plan that is designed mainly on uplands rather than on peat.



Environmental Monitoring

With feedback from First Nation communities, we diligently engage in environmental monitoring to assess and address the impact of our activities. Our aim is to avoid large bodies of water and enacting a species-at-risk impact mitigation plan that has been developed by ecological consultants.



Process Water Recycling Facilities

These will minimize total water usage and limit discharge of mine effluent back into waterways.



No Tailings on Surface

The first mine of its kind where 100 per cent of tailings will be stored underground, using these tailings to backfill underground voids created by extraction. Additionally, aggregate rock from the underground stopes can potentially provide material supplies for regional infrastructure.



Small Footprint

A modern mine design with a physical surface footprint of around one square kilometre.

Overview

Wyloo Consolidated Pty. Ltd. (“Wyloo” or the “Company”) is a globally integrated nickel company that invests in and delivers the critical minerals and materials needed to decarbonize the world. Headquartered in Perth, Australia, we own assets in two of the most prolific nickel belts in the world located in Kambalda, Western Australia and the Ring of Fire region in Northern Ontario, Canada.

We are committed to enabling a safe and secure supply of high-grade clean nickel, from extraction to processing, using the highest standards of environmental and social sustainability, in partnership with local and Indigenous Nations.¹

Specifically in Canada, Wyloo holds the most important mineral deposits in the Ring of Fire, a region located approximately 550 kilometres north of Thunder Bay. We are currently focused on developing our flagship Eagle’s Nest Project (“Eagle’s Nest” or the “Project”), one of the best undeveloped, high-grade nickel sulphide deposits in the world.

Eagle’s Nest is located on the traditional territory of Marten Falls First Nation and near Webequie First Nation, the community most proximal to the Project.

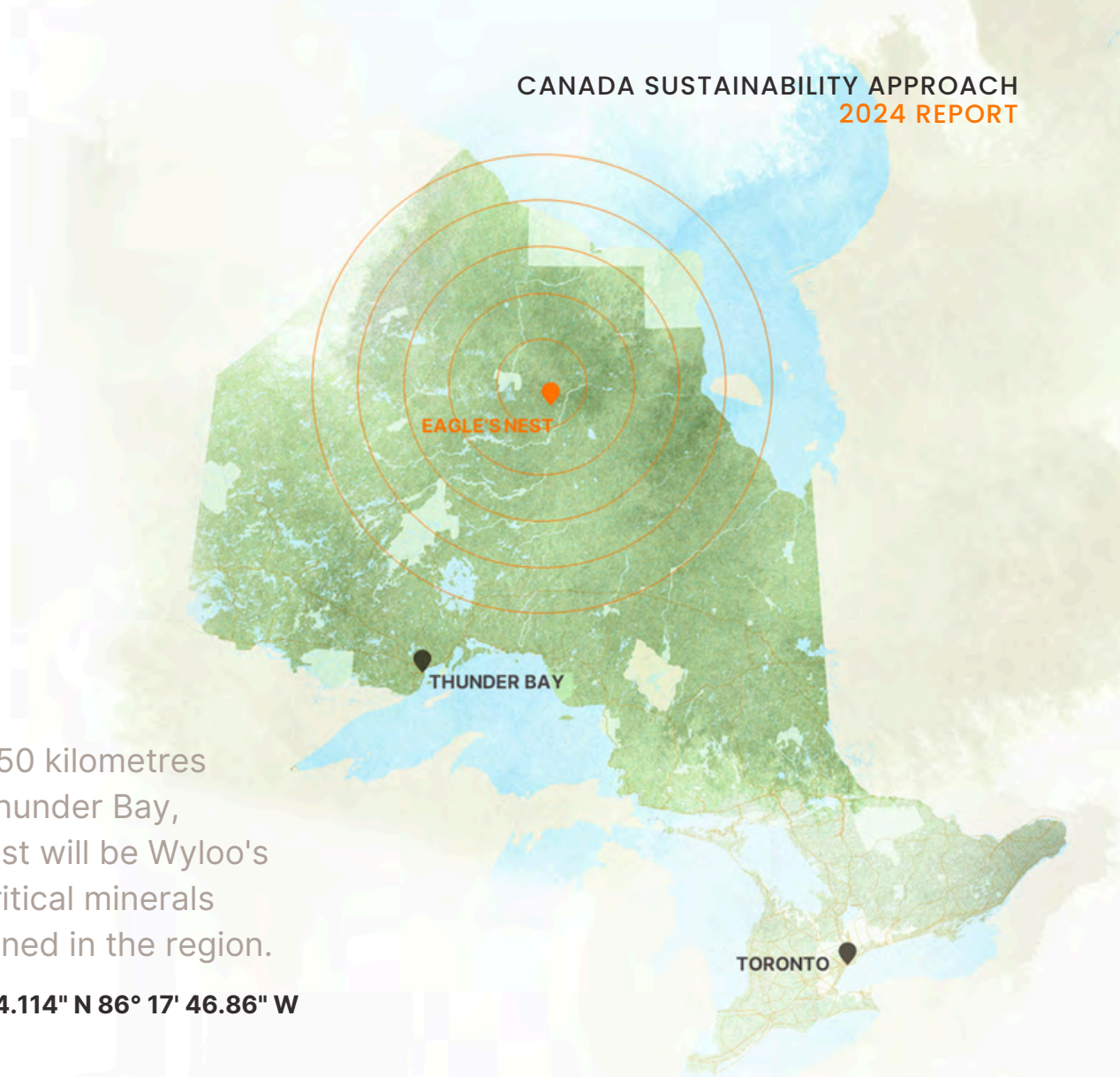
¹ Partnership in this report is defined as agreements with Indigenous Nations, whereby two parties have agreed to cooperate with each other on the Project to advance mutual interests. Partnership does not connote joint management and/or ownership of the Project by Indigenous Nations.



Aerial view of the Eagle's Nest Project / Esker Site.



In Canada, our mission is to create and implement a novel project-planning and operations-focused model on the responsible, collaborative and transparent development of natural resources.



Located 550 kilometres north of Thunder Bay, Eagle's Nest will be Wyloo's flagship critical minerals deposit mined in the region.

 **52° 44' 34.114" N 86° 17' 46.86" W**

Wyloo recognizes that resource development today takes place in a complex environment: our world is facing both a climate change crisis and a biodiversity crisis; geopolitical turmoil has heightened the importance of ensuring secure access to key critical minerals; and, reconciliation with Indigenous Peoples is a priority for Canada. We believe that the mining sector must respond by embedding commitments brought forth from the Truth and Reconciliation Commission's Calls to Action to address these challenges into their core objectives for responsible resource development going forward.²

At Wyloo, we are committed to using the highest standards of environmental sustainability, making our operations the benchmark for mines of the future.

We plan to achieve this by not only designing the Project to exceed the most stringent sustainability reporting and management standards, such as Towards Sustainable Mining, Copper Mark, Global Report Index Standards and Taskforce for Climate Related Disclosures, among others, but also by incorporating Indigenous Knowledge.

² Source: The National Centre for Truth and Reconciliation (NCTR) <https://nctr.ca/records/reports/#trc-reports>.



Top: Aerial view of the Eagle's Nest Project / Esker Site.
Bottom: Wyloo team members at Esker Site.
Right: Northern lights at Esker Site.

In Canada, our mission is to create and implement a novel project-planning and operations-focused model on the responsible, collaborative and transparent development of natural resources.

We believe that by advancing the Project in partnership with Indigenous Nations and incorporating industry-leading technologies, we can responsibly and sustainably deliver the critical minerals needed for the global green energy transition, benefiting both people and the planet.

With sustainability at the heart of our design, Eagle's Nest will produce a high-value product via selective underground mining methods as we aim to be a net zero emissions mine focused on Scope 1 (direct) and Scope 2 (indirect) emissions.

As part of this report, we have included updates on our baseline data collection efforts. Our intent is to integrate this data with input from Indigenous communities to shape our Project design.

Committed to radical transparency, we will endeavour to share our learnings gained, in line with the completion of the Feasibility Study, as part of the next public update on our Sustainability Approach.



Northern lights at Esker Site.

Sustainability Approach

People



Members of Marten Falls First Nation, Webequie First Nation and Wylloo attend the Spring Ceremony at Esker Site.



Wyloo's core philosophy is rooted in collaboration and respect for Indigenous Nations. Through active engagement and partnership, we seek to facilitate an Indigenous co-led review process, ensuring that the Project design aligns with community values and priorities, while proactively identifying and mitigating risks comprehensively.

Radical Transparency

We are developing a novel approach that details how we collect, store, analyze and share our data, intended to provide maximum transparency to communities and stakeholders: the Glass Box. This approach will provide near real-time access to "whole-of-project" information to enable real-time compliance monitoring, as well as the robust implementation of adaptive management processes to communities and stakeholders.

The Glass Box is also intended to help enhance internal collaboration between relevant functions supporting the design, permitting, construction and operation of the Project. We believe that all interested parties should be able to access Project information in near real-time rather than relying on traditional gatekeeping approaches to data management. Typically, organizations publish sustainability data on an annual basis. "Non-material" incidents or instances of non-compliance of permits are often communicated subsequent to the event, if at all. Our approach aims to eliminate the Company's narrative around incidents, providing stakeholders with direct access to the data.

Wyloo is actively working towards developing and implementing this approach in principle and substance with input from partner communities.

Comprehensive and Co-Led Indigenous Participation

The Indigenous co-led review embraces a consensus-building approach, promoting transparent dialogue and informed decision-making throughout the construction and operation phases. By prioritizing open communication and data sharing, we aim to address concerns raised by members of host communities promptly and effectively. Flexibility is inherent in this process, with a commitment to adjusting the Project design as needed to accommodate community feedback and ensure alignment with shared goals.

Recognizing the diverse perspectives and interests among Indigenous communities, our commitment is to engage with Indigenous Nations through a comprehensive engagement plan. We are developing this plan in close collaboration with Indigenous communities, as well as Federal and Provincial regulators, to ensure that voices from across the region are heard and respected.

Wyloo's proposed review process and Indigenous engagement plan will be complemented by a defined decision-making framework (the "Governance Hub") that will foster accountability and empower communities by ensuring their voices are heard on key Project decisions.

The Governance Hub will facilitate active participation through all phases of the Project, including pre-construction, construction, operation and closure. The Indigenous co-led review is meant to be a complimentary process to environmental assessments, to review impacts and suggested project mitigations through the lens of Western science and Indigenous Knowledge; the Governance Hub is meant to provide partner Indigenous Nations an active role in adaptive management of the Project.

The Governance Hub serves as a mechanism to engage in key decision-making processes and to monitor our progress and fulfillment of commitments, including compliance with key performance indicators related to identified community value components.

The structure aims to promote transparency and accountability, ensuring that community interests and Indigenous Knowledge are considered and respected throughout the Project lifecycle.

As part of the Governance Hub, we intend to explore the development of an Indigenous Surety Bond. Through this initiative, we aim to empower host communities to mobilize resources in addressing any material deficiencies in our Company's performance, in accordance with a defined process.

This approach will also help to address issues promptly and will be designed so that Indigenous Nations are not solely dependent on the Company to address and rectify performance deficiencies in a timely fashion.



Above: A Wyloo team member (left) and Elder Elizabeth Achneepineskum of Marten Falls First Nation.

Data Transparency

Through our Glass Box approach, we aim to grant communities, stakeholders and regulators with access to Project planning documentation and data. This strategy is intended to eliminate information disparities and help to foster relationships built on trust.

We are committed to integrating the principles of adaptive management (Plan-Do-Check-Act) through the Glass Box and Governance Hub. This process will allow us to continuously assess Project operations, identify potential and emerging issues, design appropriate solutions and implement necessary changes in near real-time.

Issues, solutions and considerations for adaptive management will be reported regularly (near real-time) and transparently through the Glass Box. This open reporting approach ensures that stakeholders remain informed about our efforts to identify and address environmental and social impacts effectively.

Additionally, we plan to facilitate third-party reviews of key elements or areas of concern within the Project. This commitment to transparency will allow external experts to provide objective assessments and recommendations for improvement, underscoring our commitment to accountability.

To formalize collaboration and ensure the effectiveness of our Glass Box approach, we will establish a data governance committee as part of the Governance Hub that will oversee periodic reviews of the Glass Box and make recommendations for enhancements.

In response to concerns raised by communities, including formal complaints, we commit to providing timely written responses. To ensure transparency and accountability, all feedback submitted through the Project's microsite is reviewed, logged and stored electronically. This communication channel ensures that community feedback is promptly acknowledged and addressed in a visible and understood process.

Economic Impact

Wyloo's approach to project development prioritizes more than resource extraction; it aims to stimulate regional economic development and growth by empowering Indigenous Nations. Our goal is to establish a sustainable cycle that extends into the future, leveraging investments and capacity building established today to create a renewable economic resource within the communities and throughout the region, even beyond the mine's lifecycle.

A key aspect of this strategy involves maximizing procurement opportunities for Indigenous-owned businesses, ensuring broader economic benefits to the greatest number of Indigenous Nations as beneficiaries.³

Through procurement and early workforce planning, as well as participation through the Governance Hub, Wyloo will strive to provide our Indigenous partners with greater integration and oversight into the operation of the Project.



Above: Indigenous Enterprise Forum hosted by Wyloo in the Fall of 2023.

³ Businesses that are owned by or in partnership with Marten Falls First Nation will be prioritized for procurement opportunities, followed by neighbouring First Nations and other Indigenous-owned businesses.

To support this goal, we are actively involved in capacity-building efforts aimed at local Indigenous-owned enterprises. This initiative focuses on providing the necessary resources and support for these businesses to thrive within the Project's supply chain and eventually grow beyond the scope of the Project.

As part of these efforts, we organized an inaugural Indigenous enterprise forum in the Fall of 2023, providing a platform for dialogue and collaboration among stakeholders. This forum served as a space for sharing knowledge and fostering partnerships, with plans to continue hosting similar events in the future.

Wyloo is also committed to maximizing Indigenous employment at Eagle's Nest. As we progress with development, we intend to establish a training and employment centre to provide guaranteed employment for graduating participants. We will also partner with local high schools, colleges and universities to ensure there is a strong pipeline of local Indigenous workforce ready to contribute to the operation of the Project.



Wyloo is dedicated to ensuring that communities can benefit economically in line with Project impact. Through transparent and inclusive engagement, we aim to establish mechanisms that enable Indigenous Nations to access the economic opportunities generated by the Project, thereby promoting sustainable development and prosperity for all stakeholders.

Above: Members of Marten Falls First Nation and Wyloo.

Sustainability Approach

Planet

Tree planting at Esker Site.

We are committed to implementing sustainable mining practices at our Eagle's Nest Project in our aim towards net zero emissions, prioritizing environmental responsibility and operational efficiency to not only meet but exceed industry standards in Canada.

Environmental Monitoring

Wyloo is advancing extensive baseline data collection to ensure we develop a deep understanding of the natural environment of the Project area prior to development. Additionally, we are collaborating with our Indigenous partners to understand their traditional interaction with the environment.

We are also actively facilitating dialogue to bridge Indigenous Knowledge with technical knowledge in identifying potential negative impacts. This approach enables us to explore opportunities to modify our proposed activities and reduce or eliminate these impacts where possible. In addition to ongoing evaluations of Project design and targeted responses, our aim is to avoid large bodies of water and implement a species-at-risk impact mitigation plan developed by qualified consultants.

No Tailings on Surface

Eagle's Nest is aiming to be the first mine of its kind where 100% of tailings generated through extraction will either be managed in underground in voids or mixed with paste and used for structural backfill. Additionally, clean, non-acid generating aggregate rock from the underground stopes is being considered as source material for both Eagle's Nest Project infrastructure needs and regional infrastructure development, which would eliminate the need for waste rock storage facilities at surface.

A Small Footprint and Minimal Surface Disruption

The Project features a modern mine design with a compact physical surface footprint of around one square kilometre. Using selective underground mining methods, the current mine plan supports minimal surface disruption, with no surface quarries, open pits, or waste rockpiles during operations. In addition, the mine design for building the surface infrastructure prioritizes construction mostly on uplands rather than on peat.

Process Water Recycling Facilities

The process plant is being designed with a closed-loop system, minimizing total water usage, and avoiding discharge of mine effluent back into waterways.

Climate Adaptation and Resilience / Greenhouse Gas Emissions

Eagle's Nest aims to operate as a net zero emissions mine, prioritizing environmental responsibility alongside productivity. Comprehensive power studies are currently underway to determine the most efficient and sustainable energy sources for the Project. Upgrades have been made to on-site weather stations and long-term air quality monitoring programs continue to characterize the ambient environment to support an understanding of viability of alternative power generation.

While the Project would ideally be connected to the provincial grid, current plans by the Government of Ontario and Indigenous Nations to advance an energy corridor in Northern Ontario do not align with Project timelines.^{4,5} Therefore, through scoping studies and preliminary assessments, a strategic combination of biomass and solar energy to power the mine's operations will be considered as an interim measure, which will be confirmed during the Project's Feasibility Study.⁶

For the construction phase, alternative power sources will be considered, including both bio-diesel and other renewable energy options.

In alignment with emission reduction goals, Wyloo intends to deploy an all-electric vehicle (EV) fleet for on-site activities during operations. This proactive measure will not only significantly reduce greenhouse gas emissions, but also foster a cleaner and healthier working environment for our workforce and surrounding communities by reducing ventilation requirements underground. By exclusively utilizing an EV fleet, we aim to significantly reduce our potential carbon footprint while maintaining operational efficiency.



Above: Setting up the air quality monitoring station at Esker Site.

⁴ Source: [Ontario working in partnership with Northern First Nations to end reliance on diesel fuel.](#)

⁵ We are supportive of regional development projects being led by Marten Falls First Nation and other Indigenous Nations including on power transmission, generation and other projects that can potentially be used for the operation of Eagle's Nest.

⁶ Wyloo recognizes that Indigenous Nations have raised concerns about the use of solar and biomass as power solutions. These issues are being addressed as part of the Project's Feasibility Study.

Wyloo values ongoing innovation and adaptation to further enhance sustainability efforts. As such, we remain dedicated to exploring and implementing measures to minimize environmental impacts throughout the mining lifecycle. Through these concerted efforts, Eagle's Nest is poised not only to meet, but exceed, industry standards, setting a new benchmark for responsible resource development.

Biodiversity

Wyloo is conducting comprehensive baseline studies across various environmental disciplines, including broad studies related to both terrestrial and aquatic ecosystems. We are focused on in-depth examinations of vegetation mapping, including sampling and comparative analysis of provincial data, to characterize the diverse vegetation communities and ecological dynamics around Eagle's Nest.



Above: A wolverine sighting recorded by one of our wildlife cameras.
Right: Water sampling monitoring activity around Esker Site.

Vegetation mapping is also used to identify potential habitat for species and to expand existing wildlife camera programs and locations.

Baseline data collection extends to assessment of peatlands. It also includes the study of key wildlife species such as woodland caribou, wolverines and other terrestrial species such as bats and ground- and tree-nesting birds. The data provides insights into habitat variety, migration patterns and seasonal use in the area. Wyloo continues to collaborate with Indigenous Nations as we work to advance our understanding of cultural significance and knowledge sharing.

We are also working with the provincial government through public data sharing agreements. Our aim is to identify potential gaps in species-at-risk data collection and explore collaborative ways to advance our knowledge of habitat ranges in the Far North.

Aquatic ecology studies are aimed at establishing a robust baseline to assess potential direct, indirect or cumulative effects stemming from the Project.

Comprehensive sampling efforts cover locations both upstream and downstream of the Project site, encompassing over 30 surface water sites and 10 additional surface flow stations.

Aquatic habitat locations within the Muketei River, inlet tributaries and waterbodies around the Project continue to be monitored for fish species, health and the ability of the location to support aquatic life through benthic sampling.⁷

Our expanding groundwater monitoring program aims to evaluate the local water quality monthly, which provides another input to modelling the water balance and water quality modelling at the Project site.



⁷ Benthic sampling refers to sampling for small bugs that live in the bottom of waterbodies and are good indicators for ecosystem productivity and health.

The collection of data from surface and groundwater supports our understanding of water movement around the Project, and are key inputs to species interaction, specifically aquatic and terrestrial, and the overall environment.

Waste and Tailings

The Project will use an innovative approach to tailings management, which will set a new industry standard. Wyloo plans to store all tailings underground, either within underground voids created during the extraction process or as structural backfill when combined with paste in areas that are mined out. This strategy not only eliminates the need for traditional surface tailings storage facilities, thereby eliminating significant potential impacts at surface as well as potential impacts to surface water, but will also enhance underground stability.

Aggregate material consisting of granatic waste rock sourced from underground openings will be characterized. Suitable non-acid generating material will be utilized for on-site infrastructure construction. The aggregate will also be characterized as a potential source for development of the regional infrastructure, such as the aerodrome and maintenance of the proposed all-season roads.⁸

By leveraging this natural resource, the Project will aim to reduce waste generation and

minimize our environmental footprint while also fostering business opportunities for local Indigenous Nations.

Water and Effluents

Water quality monitoring is a fundamental aspect of the Project, underscored by our commitment to a closed-loop process plant. In addition, the layout of Eagle's Nest is being optimized to reduce the potential for water interaction with the Project and related infrastructure. Surface and groundwater will be monitored in alignment with best management practices, permitting requirements and Provincial Water Quality Objectives (Ontario) prior to discharge.

The process plant is being designed as a closed-loop system, with the aim of preventing any discharge of water from the process plant into the receiving environment, further reducing the potential for non-contact water interaction.

The surface water quality sampling program, re-initiated in July 2023, builds on the dataset collected between 2008 to 2012. The program is conducted routinely at 27 groundwater wells, 28 surface water stations and four flow stations, which have been strategically identified around the Project area based on the local and regional watershed delineations, both upstream and downstream from the Project, to understand and identify potential areas of influence.

⁸ Webequie First Nation and Marten Falls First Nation are the Environmental Assessment proponents for an infrastructure corridor that will facilitate all-season road access. To learn more:

- [Marten Falls Community Access Road \(led by Marten Falls First Nation\)](#)
- [Northern Road Link \(co-led by Marten Falls First Nation & Webequie First Nation\)](#)
- [Webequie Supply Road \(led by Webequie First Nation\)](#)

We complete routine checks through a data management system and conduct quarterly reviews of data trends to understand seasonal changes. These reviews also ensure that our spatial coverage is sufficient, factoring in multiple discipline inputs.

The hydrogeology component of the baseline study focuses on assessing the existing hydrogeological conditions within the Project area. It leverages historical baseline work conducted from 2010 to 2013, with additional data collection to qualify historical data and providing additional reference points to complement the existing dataset.

The assessment utilizes the existing monitoring well network on site, with additional locations installed in 2024 to further complement data collection, providing Wyloo with a comprehensive evaluation of hydrogeological dynamics and communication.

Hydrogeology stations have also undergone significant upgrades, including updates to equipment and survey markers. We continue to review available datasets to understand historical capture methods and changes in the environment, aligning the data with current multi-disciplinary efforts to enhance our understanding of geographical conditions in the Project area.



Indigenous-Led Monitoring

Wyloo intends to establish an Indigenous-led monitoring program to ensure all environmental monitoring activity is conducted either by or in active collaboration with our partner Indigenous Nations.

Directly involving community members in the collection of monitoring data, as well as in the review of monitoring programs, will provide a powerful complement to open and transparent information sharing that will be facilitated through our Glass Box approach.



Sustainability Approach Project

📍 52° 44' 34.114" N 86° 17' 46.86" W

Aerial view of the Eagle's Nest Project / Esker Site.



Wyloo is currently conducting a Feasibility Study for the Eagle's Nest Project. Based on the current mine plan, Eagle's Nest is forecasting the start of production in 2030 with an initial 17-year mine life.

Using selective underground mining methods at a rate of 3,000 tonnes per day, the mine is forecasting annual production of 15,000 tonnes of nickel, 6,000 tonnes of copper, 70,000 ounces of palladium and 22,000 ounces of platinum in separate, high-quality nickel and copper concentrates that are favourable for various downstream processing opportunities.

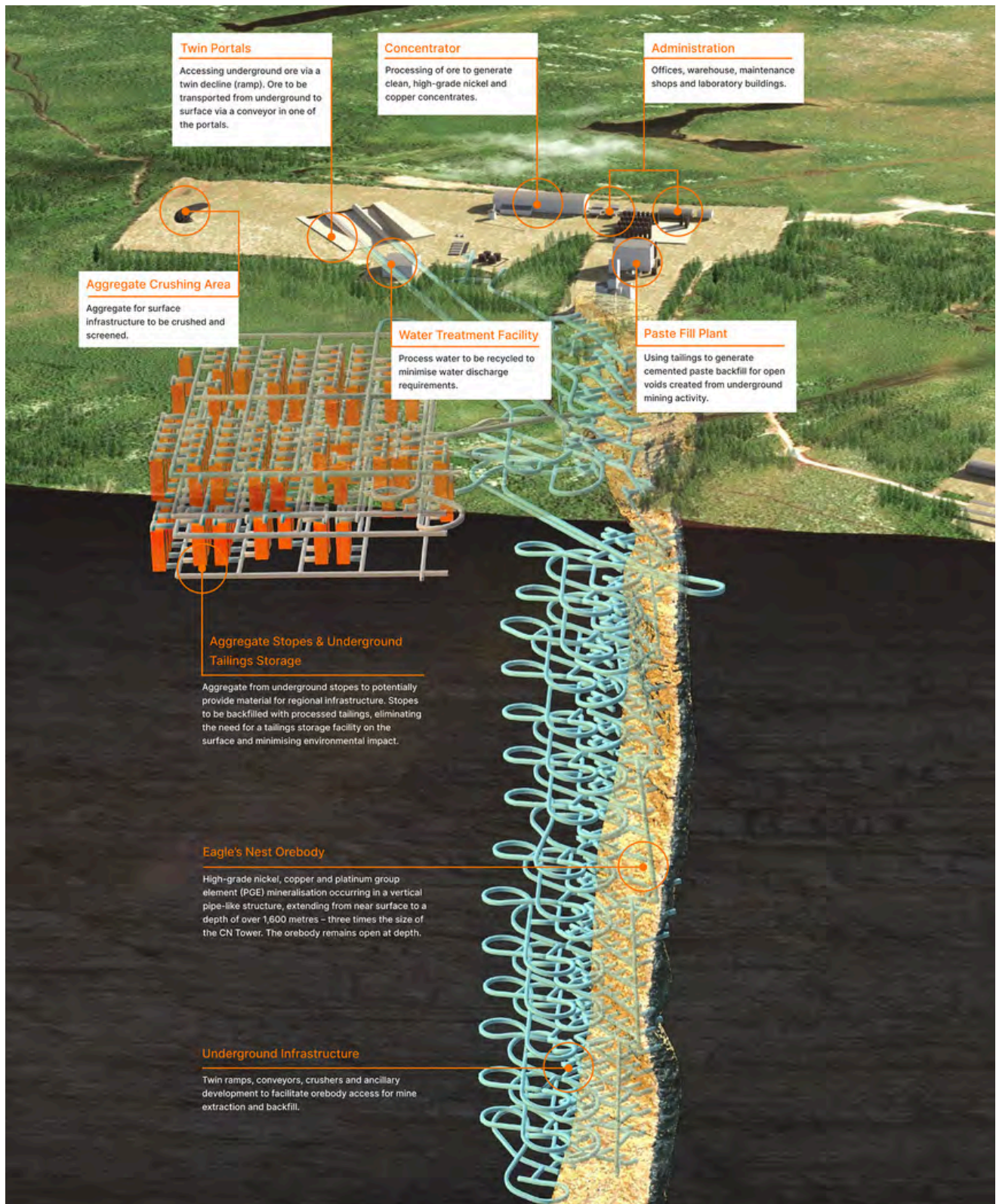
The global push for energy efficiency and decarbonization commitments has significantly increased the demand for renewable energy technologies. Specifically, as a key element in EV batteries, nickel is critical in the scaling up of clean energy and a more sustainable future. However, where Canada once dominated in the global output of nickel, production continues to decline without new supply.

Our Eagle's Nest Project represents one of the best opportunities for responsible critical mineral development in Canada and for downstream processing in Ontario. Wyloo is planning to conduct various studies into building the country's first downstream battery materials processing facility in Sudbury, Ontario.⁹

This facility is a separate downstream venture and is dependent on Eagle's Nest development. If approved and built, the facility would fill a critical gap in the country's EV battery supply chain by establishing Canada's first mine-to-precursor cathode active material (pCAM) integrated solution.

Feed for the facility is planned to be supplied by Eagle's Nest concentrate and sources of third-party nickel-bearing feed and recycled battery materials. The supply of nickel from Eagle's Nest alone is expected to produce batteries for up to 250,000 EVs annually, providing an integral, onshoring source of critical metals for the emerging battery market in Canada.

⁹ See press release issued on May 29, 2024: Canada's First Downstream Battery Materials Processing Facility to be Built in Sudbury.



Above: Eagle's Nest current mine design. Note that the mine design is subject to change and will be confirmed as part of the Feasibility Study.

Appendix

Exhibit 1

List of select mines and projects in northern Ontario and Quebec.¹⁰

Project / Mine (Owner)	Location	Primary Metal	Mine Type	Footprint	Tailings Storage	Other Environmental Impacts
Eagle's Nest Project (Wyloo)	Ring of Fire, Ontario	Nickel	Underground	~1 km ²	Underground (paste backfill)	
Crawford Project (Canada Nickel)	Timmins, Ontario	Nickel	Open pit	114 km ²	Above ground tailings storage	Relocation of Highway 655 and 500 kilovolt transmission line. Diversion of waterways.
Raglan Mine (Glencore)	Nunavik, Quebec	Nickel	Four underground + six open pits	70 km ²	Above ground tailings facility	
Rose Lithium-Tantalum (Critical Elements Corp)	Nemiscau, Quebec	Lithium	Open pit	6 km ²	Above ground tailings storage	
James Bay Project (Lithium One)	James Bay, Quebec	Lithium	Open pit	6 km ²	Above ground tailings storage	

¹⁰ Source: Company materials.



Feedback

Feedback


For more information on the Eagle's Nest Project, please visit:
www.wylooeaglesnest.com.

In order to foster valuable partnerships, we encourage feedback regarding our actions and endeavours.

Comments and questions may be submitted through the Project's microsite at www.wylooeaglesnest.com/connect.

You may use the form to get in touch with us, ask a question, request a community visit, file a grievance or share your comments.

Stay Connected

 @wylooeaglesnest

 @wyloo_

 @wyloo

 @wyloo_



Contact

Toronto

212 King Street West, Suite 501
Toronto, ON M5H 1K5
416-367-1444

Thunder Bay

1127 Premier Way, Unit 1
Thunder Bay, ON P7B 0A3
1-855-966-7668

www.wylooeaglesnest.com